

# Official Zoning Map

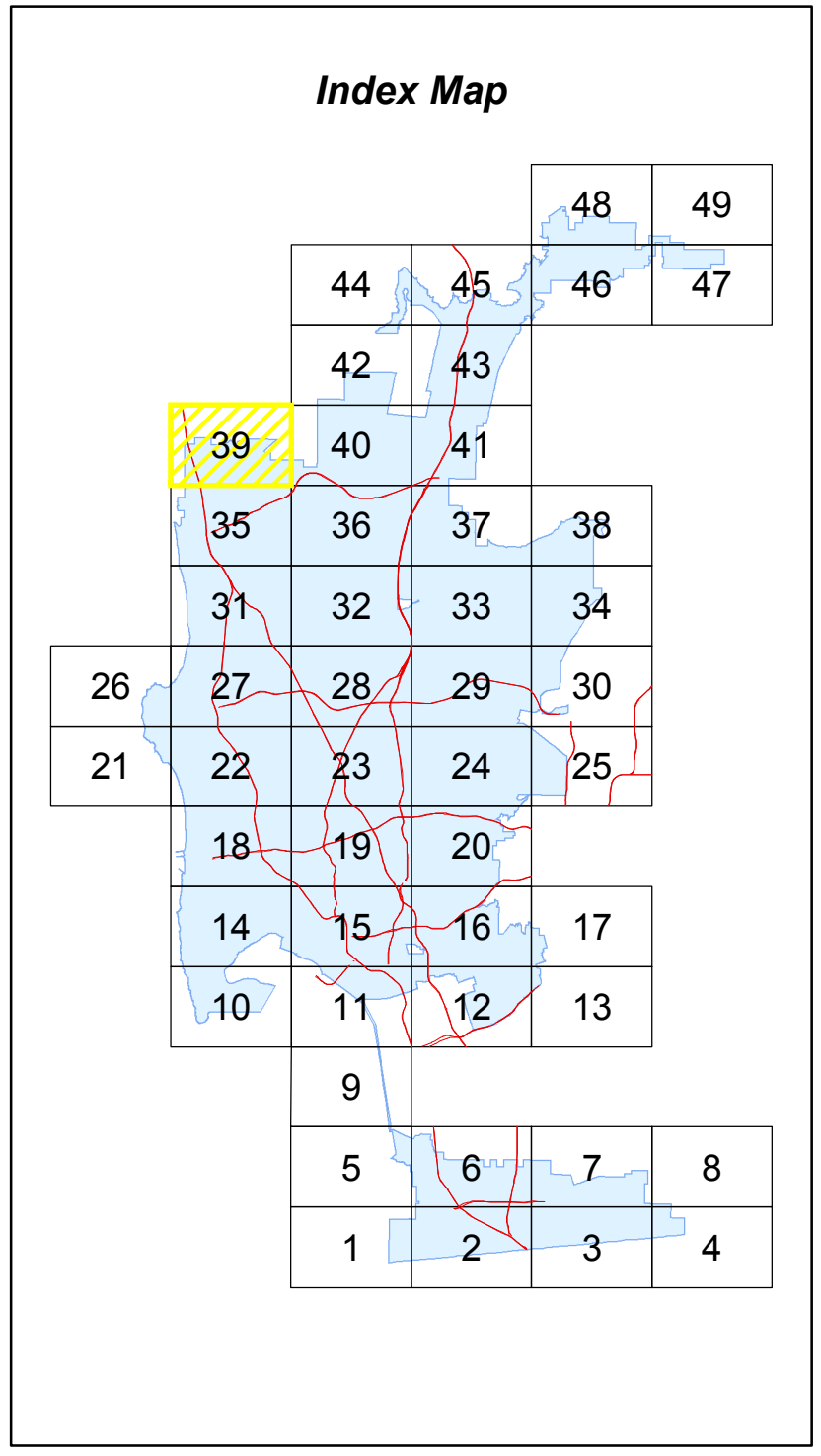
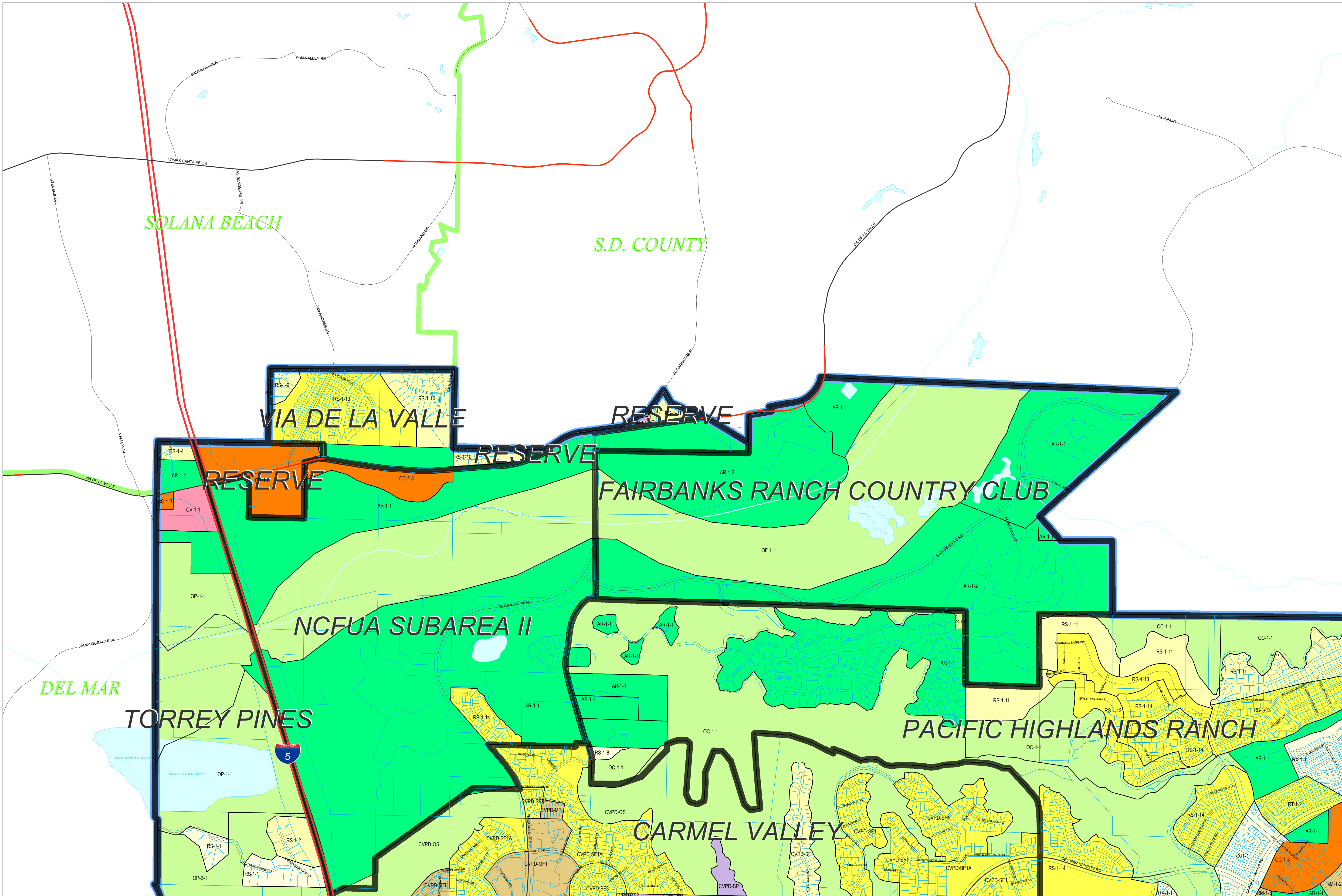
**Legend**

- City of San Diego Boundary
- Community Plan Areas
- Parcels

**Zoning**

**ZONE\_NAME**

- AR-1-1
- AR-1-2
- CC-1-3
- CC-2-3
- CO-1-1
- CV-1-1
- CVPD-EP
- CVPD-MF1
- CVPD-MF2
- CVPD-MFL
- CVPD-OS
- CVPD-SF
- CVPD-SF1
- CVPD-SF1A
- CVPD-SF3
- CVPD-SP
- OC-1-1
- OF-1-1
- OP-1-1
- OP-2-1
- RM-1-2
- RM-1-3
- RS-1-1
- RS-1-10
- RS-1-11
- RS-1-12
- RS-1-13
- RS-1-14
- RS-1-2
- RS-1-4
- RS-1-8
- RS-1-9
- RT-1-2
- RX-1-1

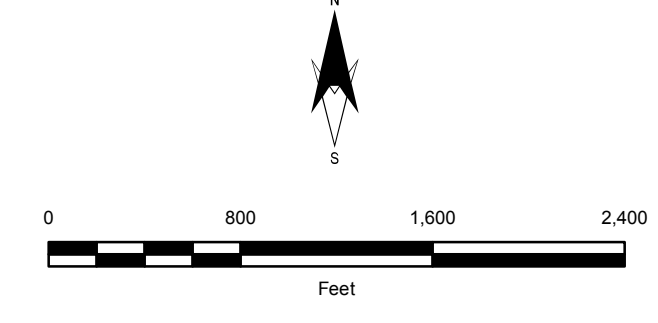


SanGIS Basemap Accuracy  
 SanGIS Land (Lot) basemap data for the City of San Diego tested 20.7' horizontal accuracy at the 95% confidence level.  
 This data meets the ASPRS Standard for Class 1 Map Accuracy at a scale of 1:12,000 (1"=1,000').  
 This assessment assumes utilization of the data on a citywide basis. Localized data may exceed or fail to meet this accuracy with errors in excess of 100' possible.

THIS MAP/DATA IS PROVIDED WITHOUT WARRANTY OF ANY KIND, EITHER EXPRESS OR IMPLIED, INCLUDING BUT NOT LIMITED TO, THE IMPLIED WARRANTIES OF MERCHANTABILITY AND FITNESS FOR A PARTICULAR PURPOSE.  
 Note: This product may contain information reproduced with permission from SANDAG. This product may contain information reproduced with permission from RAND MCNALLY & COMPANY, INC. to SanGIS. This map is copyrighted by RAND MCNALLY & COMPANY, INC. It is unlawful to copy or reproduce all or any part thereof, whether for personal use or resale, without the prior written permission of RAND MCNALLY & COMPANY, INC.  
 Copyright SanGIS 2009 - All Rights Reserved.  
 Full text of this legal notice can be found at: [http://www.sangis.org/Legal\\_Notice.htm](http://www.sangis.org/Legal_Notice.htm)



**City of San Diego**  
**Development Services Department**



**GRID TILE: 39**  
 GRID SCALE: 800  
 DATE: 5/8/2018 12:40:07 PM