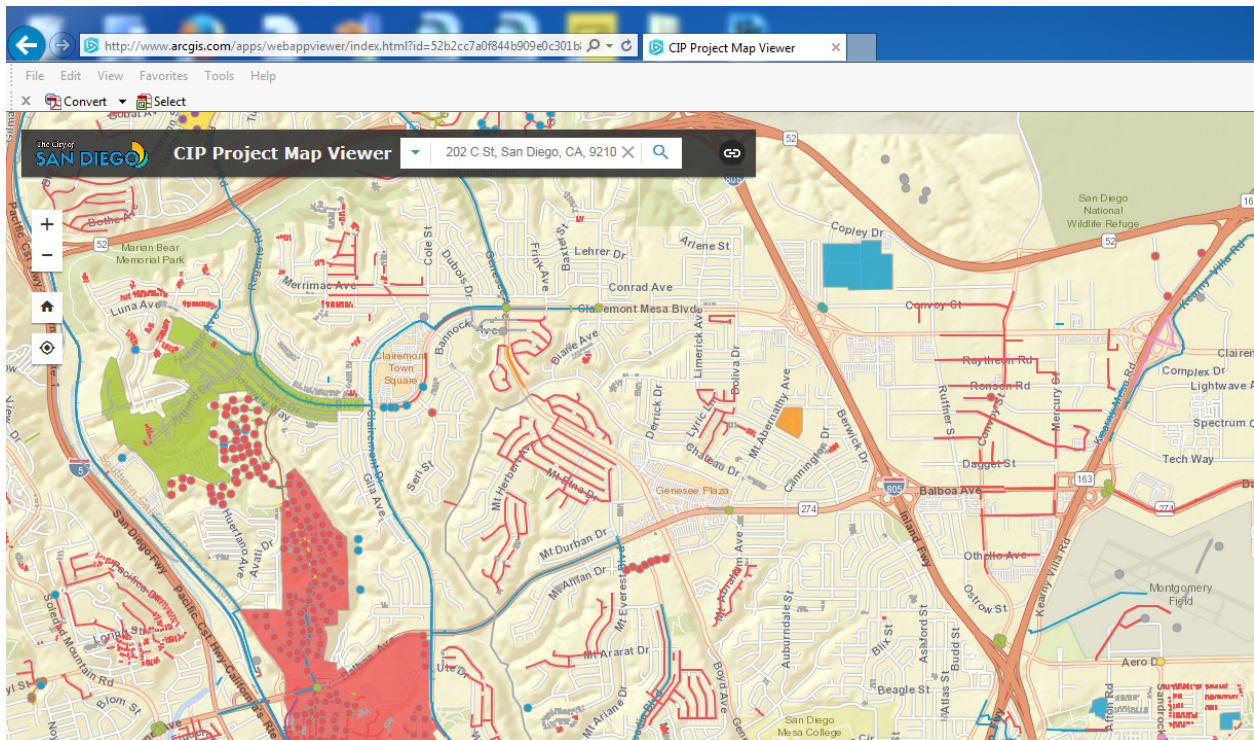


CIP Project Map Viewer: Searching for Projects near a Specified Address

This document shows the steps needed to search for Capital Improvements Project information near a specific address.

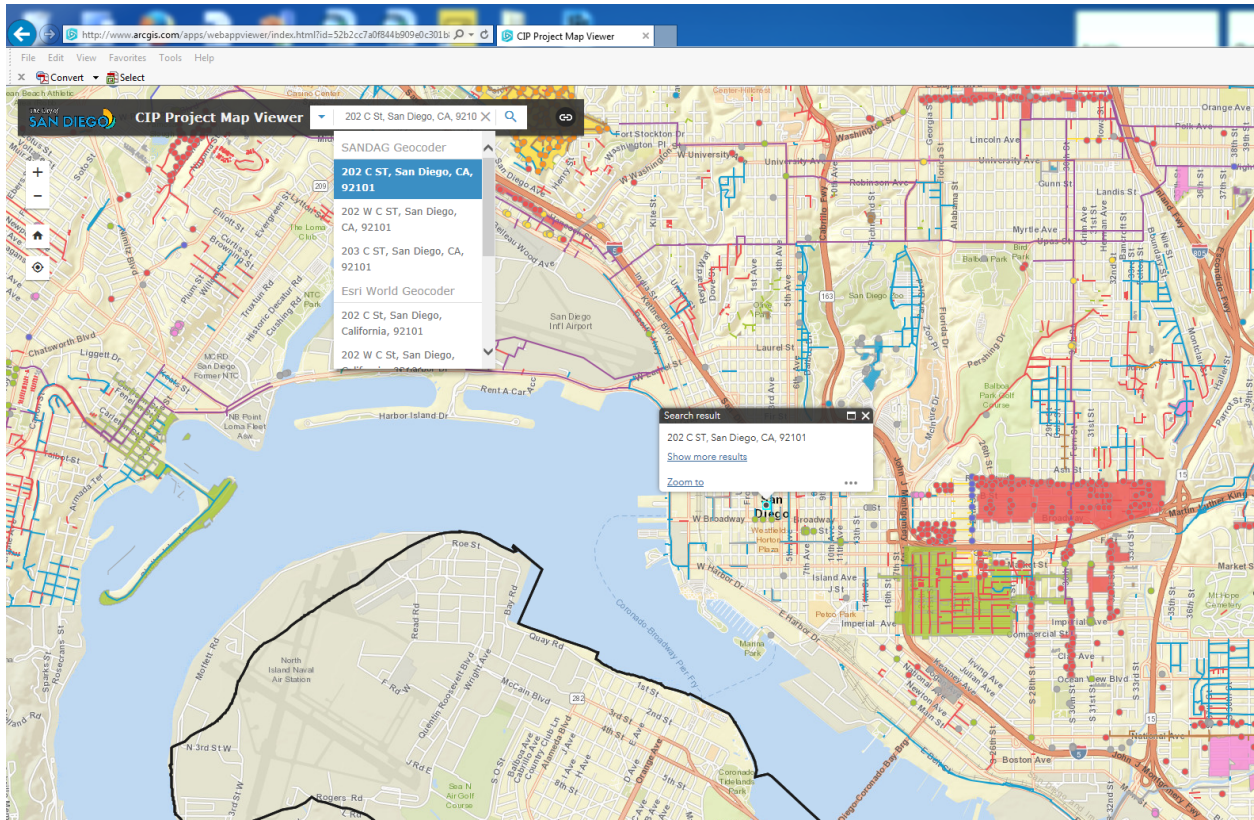
Search for Addresses

To search for an address in the CIP Project Map Viewer, do the following: type the desired address into the Address Search bar, located at the top of the web application. It is recommended that you include your zip code as shown below, this will ensure that the web Application takes you to your desired street within the City of San Diego, as other locations may have similar street names (For example: 202 C St, San Diego, CA, 92101).



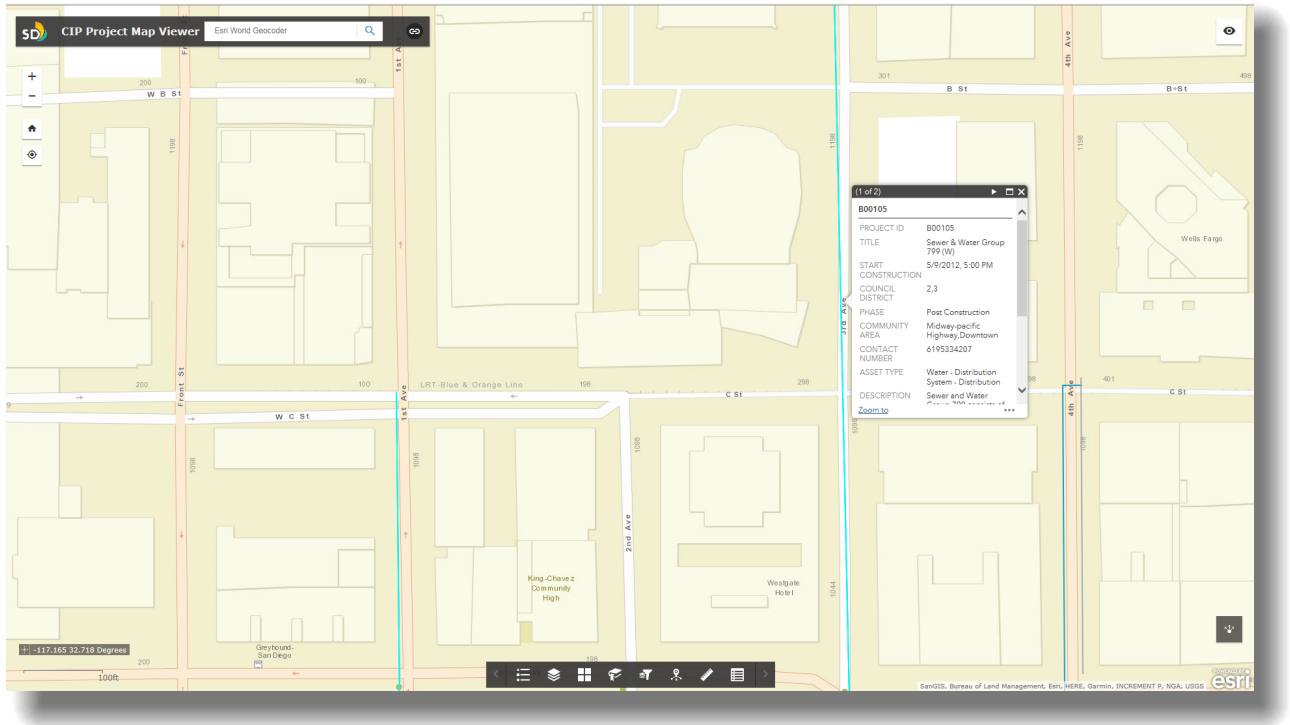
CIP Project Map Viewer: Searching for Projects near a Specified Address

On your keyboard, press the Enter button or by clicking on the Search button (the Magnifying glass shown immediately to the right of the search address bar) will zoom the map into the specified address.



CIP Project Map Viewer: Searching for Projects near a Specified Address

If your address is not properly zoomed into, check that you entered the address correctly. Also, there should be a dropdown of options which may offer alternative spellings. Once you have zoomed into the desired address, you should see the projects nearby. If you want a larger scope, you can use your mouse zoom wheel or the +/- buttons on the top left of the map frame. You can left click on any project to see more information about that project.



CIP Project Map Viewer: Searching for Projects near a Specified Address

Additionally, you can use the Info Summary and the Attribute Table widgets to see a summary of the projects in your current map frame. To use these widgets, left click on them in the widgets ribbon at the bottom of the map frame.

The screenshot displays the CIP Project Map Viewer interface. At the top, there is a search bar with the text "Eas World Geocoder". The map shows a street grid with labels for "W B St", "W C St", "LRT Blue & Orange Line", and "4th St". A red dot on the map indicates a selected location. On the right side, an "Info Summary" widget is open, showing the following counts:

- CIP POINT: 3
- CIP LINE: 3
- CIP POLY: 0

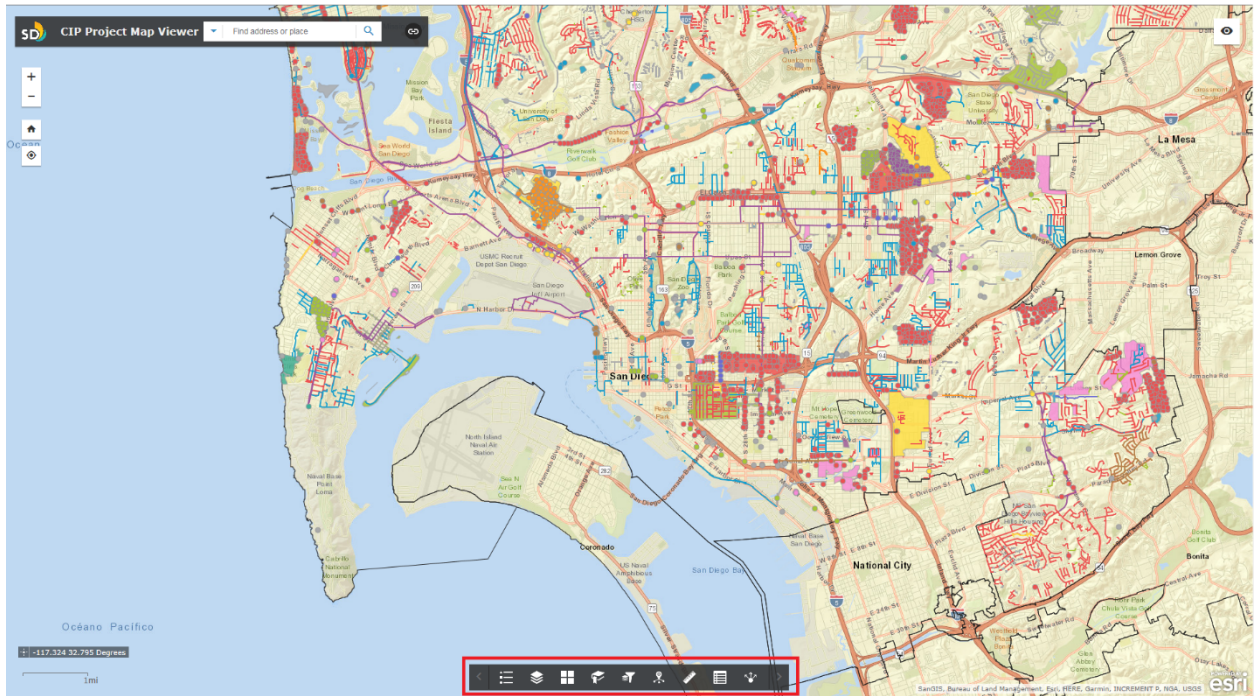
Below the map, there is a toolbar with options for "CIP POINT", "CIP LINE", and "CIP POLY". The "CIP LINE" option is selected. Below the toolbar is an "Attribute Table" with the following columns: PROJECT ID, TITLE, START CONSTRUCTION, COUNCIL DISTRICT, PHASE, COMMUNITY AREA, CONTACT NUMBER, ASSET TYPE, DESCRIPTION, HYPERLINK, and Shape_Length. The table contains one row of data for project ID 800105.

PROJECT ID	TITLE	START CONSTRUCTION	COUNCIL DISTRICT	PHASE	COMMUNITY AREA	CONTACT NUMBER	ASSET TYPE	DESCRIPTION	HYPERLINK	Shape_Length
800105	Sewer & Water Group 799 (W)	May 9, 2012	2,3	Post Construction	Midway-pacific Highway,Downtown	6195334207	Water - Distribution System - Distribution	Sewer and Water Group 799 consists of the replacement of 8-inch CP (concrete pipe) sewer in Centre City and Old Town Community with new 8-inch sewer pipelines for a total of 1,431.77 lf and the rehabilitation of existing 8-inch and 6-inch sewer	http://dpcrcdotnetprod.sar ID=800105	11,526.7557875135

At the bottom left of the interface, it says "3 features 0 selected".

Additional Tools/Widgets

In addition to the aforementioned Attribute Table and Info Summary widgets, there are additional tools at your disposal within this application. The Widgets bar is located at the bottom of the main map frame.



Going from left to right the widgets are as follows: Legend, Layer List, Basemap Gallery, Bookmark, Group Filter, Info Summary, Measurement, Attribute Table, Share.

The Widgets perform the following actions within this web application:

Legend: Displays a legend containing the details symbology of the map frame

Layer List: Displays the operational layers which can be toggled on or off to display various features

Basemap Gallery: Contains the selectable basemaps (which essentially are the background image of the map). One particularly useful basemap may be the Imagery with Labels basemap.

Bookmark: Contains editable bookmark extent views for saving your current view in. By default, the Council Districts and initial view are available.

Group Filter: This contains a unique way to filter groups of projects.

Info Summary: Displays a count of the CIP projects shown on the map.

CIP Project Map Viewer: Searching for Projects near a Specified Address

Measurement: A tool to measure distances across the map.

Attribute Table: A spreadsheet display of the CIP projects and additional information. You can export this to a CSV file for your records if desired.

Share: This widget allows you to share the URL of a specific view or project via several media platforms.

Thank you!