



THE CITY OF SAN DIEGO



ANNUAL REPORT for Fiscal Year 2018

HILLCREST MAINTENANCE ASSESSMENT DISTRICT

under the provisions of the

**San Diego Maintenance Assessment District Procedural Ordinance
of the San Diego Municipal Code**

**Prepared For
City of San Diego, California**



**Prepared By
EFS Engineering, Inc.
P.O. Box 22370
San Diego, CA 92192-2370
(858) 752-3490**

June 2017

CITY OF SAN DIEGO

Mayor

Kevin Faulconer

City Council Members

Barbara Bry District 1	Mark Kersey District 5 (Council President Pro Tem)
Lorie Zapf District 2	Chris Cate District 6
Chris Ward District 3	Scott Sherman District 7
Myrtle Cole District 4 (Council President)	David Alvarez District 8
Georgette Gómez District 9	

City Attorney

Mara W. Elliott

Chief Operating Officer

Scott Chadwick

City Clerk

Elizabeth Maland

Independent Budget Analyst

Andrea Tevlin

City Engineer

James Nagelvoort

Table of Contents

Annual Report for Fiscal Year 2018 Hillcrest Maintenance Assessment District

Preamble.....	1
Executive Summary	2
Background	3
District Boundary	3
Project Description.....	3
Separation of General and Special Benefits.....	4
Cost Estimate.....	4
Annual Cost-Indexing	4
Method of Apportionment.....	5
Estimated Benefit of the Improvements.....	5
Apportionment Methodology	5
Sample Calculations	6
Summary Results.....	7

EXHIBITS

Exhibit A: District Boundary

Exhibit B: Estimated Budget – Revenue & Expense Statement
for Fiscal Year 2018

Exhibit C: Preliminary Assessment Roll for Fiscal Year 2018

Annual Report for Fiscal Year 2018

Hillcrest

Maintenance Assessment District

Preamble

Pursuant to §65.0220 of the “San Diego Maintenance Assessment District Procedural Ordinance” (being Division 2, Article 5, Chapter 6 of the *San Diego Municipal Code*) and City of San Diego Council Resolution No. R-310618 passed on July 22, 2016, authorizing the continued levy of assessments for the life of the HILLCREST MAINTENANCE ASSESSMENT DISTRICT (hereinafter referred to as “District”), and in accordance with applicable provisions of “Proposition 218” (being Article XIID of the California Constitution), and provisions of the “Proposition 218 Omnibus Implementation Act” (being California Senate Bill 919) (the aforementioned provisions are hereinafter referred to collectively as “applicable law”), and in accordance with Resolution No. _____, adopted by the CITY COUNCIL OF THE CITY OF SAN DIEGO, COUNTY OF SAN DIEGO, STATE OF CALIFORNIA, and in connection with the annual proceedings for the District, EFS Engineering, Inc., as Assessment Engineer to the City of San Diego, submits herewith this annual report for the District as required by §65.0220 of the “San Diego Maintenance Assessment District Procedural Ordinance.”

DATE OF FINAL PASSAGE BY THE CITY OF SAN DIEGO,
COUNTY OF SAN DIEGO, STATE OF CALIFORNIA, ON THE
_____ DAY OF _____, 2017.

Elizabeth Maland, CITY CLERK
CITY OF SAN DIEGO
STATE OF CALIFORNIA

Executive Summary

Project: Hillcrest
Maintenance Assessment District

Apportionment Method: Linear Frontage Foot (LFF)

	FY 2017	FY 2018 ⁽¹⁾	Maximum ⁽²⁾ Authorized
Total Parcels Assessed:	41	41	--
Total Estimated Assessment:	\$17,539	\$17,866	--
Total Number of LFF:	3,272.24	3,272.24	--
Assessment per LFF:	\$5.36	\$5.46	\$5.47 ⁽³⁾

⁽¹⁾ FY 2018 is the City's Fiscal Year 2018, which begins July 1, 2017 and ends June 30, 2018. Total Parcels Assessed, Total Estimated Assessment, and assessment apportionment factors may vary from prior fiscal year values due to parcel changes and/or land use re-classifications.

⁽²⁾ Maximum authorized assessment rate subject to cost-indexing as approved by property owners at the time of District formation.

⁽³⁾ Prior fiscal year's maximum authorized annual assessment rate increased by cost-indexing factor of 1.96%.

Annual Cost-Indexing: The maximum authorized assessment rates are cost-indexed and will increase (or decrease) annually based on the annual change in the *San Diego Consumer Price Index for Urban Consumers* (SDCPI-U).

Background

The Hillcrest Maintenance Assessment District (District), originally known as the “Mid-City Maintenance Assessment District, Sub-District #12,” was established by the City of San Diego (City) on March 23, 1999 by City Council Resolution R-291373. The purpose of the District was, and still is, to fund specifically identified improvements and activities within the boundary of the District.

In conformity with §65.0221 of the “San Diego Maintenance Assessment District Procedural Ordinance,” the City adopted Resolution No. R-310618 on July 22, 2016, approving the annual budget and assessments for Fiscal Year 2017, and authorizing the levy of the assessments for the life of the District, consistent with the benefit findings and assessment apportionment method contained in the approved formational and all subsequently updated Engineer’s Reports (Engineer’s Reports). The Engineer’s Reports are on file with the City Clerk, and incorporated herein by reference.

The District is authorized and administered under the provisions of the “San Diego Maintenance Assessment District Procedural Ordinance.” This annual report has been prepared pursuant to the requirements of §65.0220 of the “San Diego Maintenance Assessment District Procedural Ordinance.”

District Boundary

The District boundary is generally depicted in **Exhibit A**. The District Boundary Map and Assessment Diagram are on file in the Maintenance Assessment Districts section of the Park and Recreation Department of the City, and, by reference, are made a part of this annual report.

Project Description

The authorized assessments will be used to fund specifically identified improvements and activities within the District. The District improvements and activities generally consist of maintenance and servicing associated with landscaped and hardscaped medians, and median gutter sweeping in the District. All improvements to be maintained by the District fall within the dedicated City public rights-of-way. The approximate location of the improvements is generally shown on **Exhibit A**.

For additional detail as to the location, type of improvements, and activities performed by the District, please refer to the maps,

improvement plans, engineering drawings, maintenance specifications, the Engineer's Reports and other associated documents on file with the Maintenance Assessment Districts section of the Park and Recreation Department of the City. These documents, collectively, are incorporated herein by reference and made part of this annual report.

Separation of General and Special Benefits

The identified improvements and activities provide benefits to the parcels located within the District. These benefits are "special benefits" to the extent that they are above and beyond the City's standard level of service, and exclusive of those "general benefits" provided to the public at large or properties located outside the District. By law, only "special benefits" are assessable.

The assessments presented in this annual report are based on the cost of improvements and activities determined to provide "special benefits" in accordance with the Engineer's Reports. For additional detail relative to the separation and quantification of general and special benefits for the District, please refer to the Engineer's Reports, on file with the Maintenance Assessment Districts section of the Park and Recreation Department of the City.

Cost Estimate

The estimated annual budget (Revenue & Expense Statement) for Fiscal Year 2018 (July 1, 2017 to June 30, 2018 period) is included as **Exhibit B**. The "Other Contributions (Non Assessment Source)" revenue contained in the budget includes the value of improvements and activities determined to provide "general benefits." The District budget with full detail is available for public reference in the Maintenance Assessment Districts section of the Park and Recreation Department of the City.

Annual Cost-Indexing

The maximum authorized assessment set forth in the Engineer's Reports is permitted to increase annually based on the published change in the "San Diego Consumer Price Index for Urban Consumers" (SDCPI-U). The annual change in second half SDCPI-U values, as compiled by the *U.S. Bureau of Labor Statistics* (see www.bls.gov), for the prior year period was from 271.526 to 276.837 (a 1.96% increase). In accordance with the approved cost-indexing provisions, the maximum authorized assessment rates have been increased by 1.96%.

Method of Apportionment

Estimated Benefit of the Improvements

The Transportation Element of the City's General Plan and the general policy recommendations found in the local Community Plan establish several goals for the community's transportation system. The District improvements and activities are consistent with the plans' goals for safety and pleasing aesthetics. All benefits assessed to the District are special to this District and are distinct from other parcels in the City.

The improvements and activities, enhanced landscape, streetscape, medians, benches, and additional street lighting) benefit parcels by enhancing the visual aesthetics of the business districts, establishing a continuity of business district appearance, increasing land and business values, promoting public safety and a sense of security for the clientele and employees through increased night lighting, reducing graffiti problems, and creating a sense of community identity and pride.

Apportionment Methodology

It is estimated that the benefit received by each parcel is directly proportional to the linear front footage of each parcel fronting the improvements. The total cost associated with District improvement and activities has been divided by the total linear front footage of all parcels within the District to determine the unit assessment rate, or cost per linear frontage foot (LFF).

Sample Calculations

As described above, assessments have been calculated for each parcel based the linear front footage (LFF) of the property along the improvement/service corridor.

LFF = Linear Front Footage

Shown below are LFF calculations for various sample parcels.

- **Property with 50-foot frontage**
LFF = 50.00 LFF
- **Property with 140-foot frontage**
LFF = 140.00 LFF
- **10-unit Condominium Property with 100-foot frontage**
LFF (per condo unit) = 100.00 LFF / 10 units = 10.00 LFF

The total assessment for each parcel in the District is based on the calculated LFF for the parcel and the applicable unit assessment rate, as shown in the following equation:

Total Assessment = Total LFF x Unit Assessment Rate

Based on the above formula, the LFF calculated for each property, can be found in the Assessment Roll (**Exhibit C**).

Summary Results

The District Boundary is presented in **Exhibit A**.

An estimate of the annual costs of the improvements and activities provided by the District is included as **Exhibit B**.

The assessment methodology utilized is as described in the text of this annual report. Based on this methodology, Fiscal Year 2018 District assessment for each parcel were calculated and are shown in the Preliminary Assessment Roll (**Exhibit C**).

Each lot or parcel of land within the District has been identified by unique County Assessor's Parcel Number in the Preliminary Assessment Roll and on the Boundary Map and Assessment Diagram referenced herein.

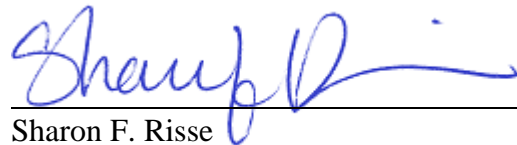
This annual report has been prepared and respectfully submitted by:

EFS ENGINEERING, INC.



Eugene F. Shank, PE

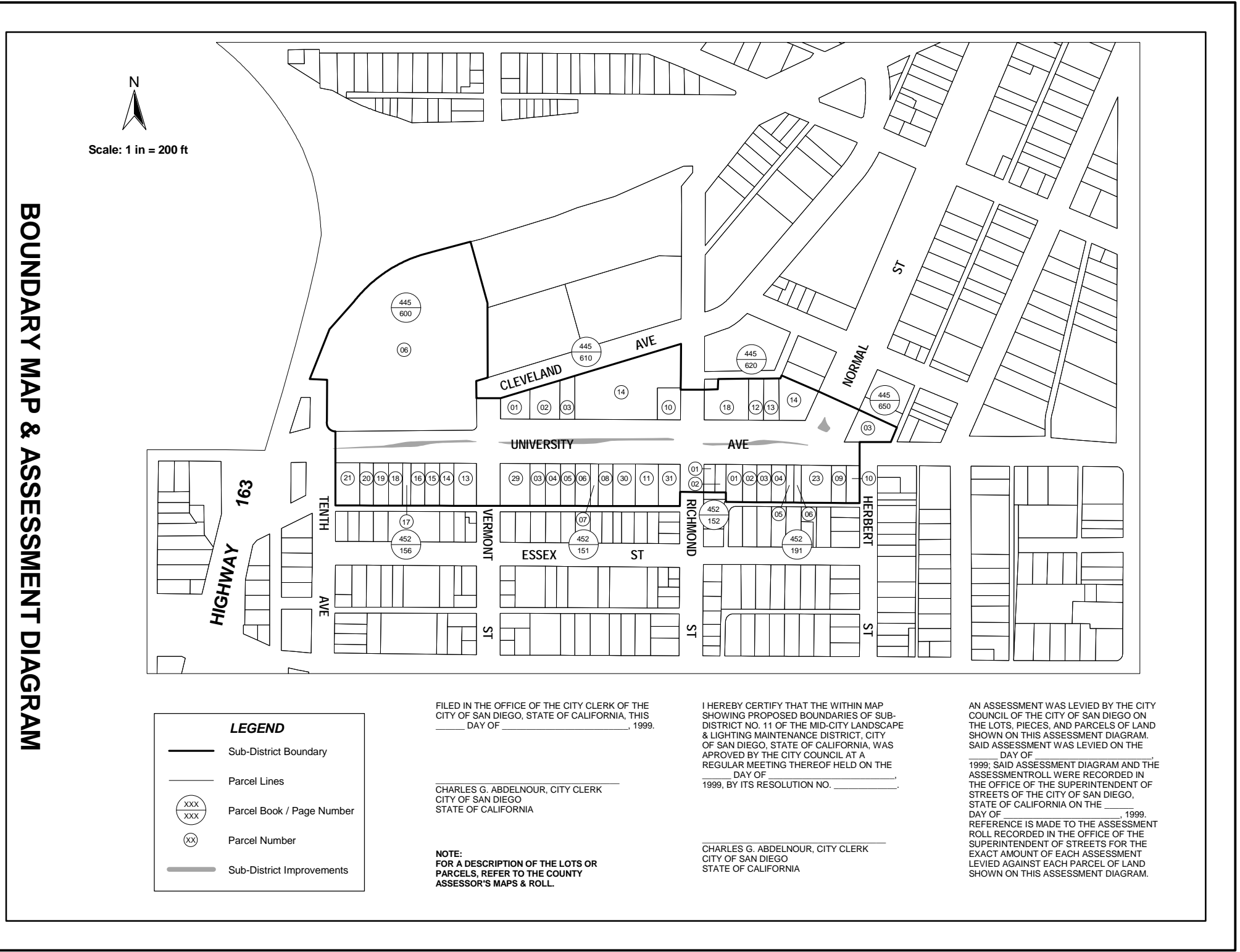
C 52792



Sharon F. Risse

EXHIBIT A

District Boundary



W.O. _____ DATE: _____

CITY OF SAN DIEGO

MID-CITY MAINTENANCE ASSESSMENT DISTRICT

SUB-DISTRICT #12

SHEET

FILED IN THE OFFICE OF THE CITY CLERK OF THE CITY OF SAN DIEGO, STATE OF CALIFORNIA, THIS _____ DAY OF _____, 1999.

CHARLES G. ABDELNOUR, CITY CLERK
CITY OF SAN DIEGO
STATE OF CALIFORNIA

NOTE:
FOR A DESCRIPTION OF THE LOTS OR PARCELS, REFER TO THE COUNTY ASSESSOR'S MAPS & ROLL.

I HEREBY CERTIFY THAT THE WITHIN MAP SHOWING PROPOSED BOUNDARIES OF SUB-DISTRICT NO. 11 OF THE MID-CITY LANDSCAPE & LIGHTING MAINTENANCE DISTRICT, CITY OF SAN DIEGO, STATE OF CALIFORNIA, WAS APPROVED BY THE CITY COUNCIL AT A REGULAR MEETING THEREOF HELD ON THE _____ DAY OF _____, 1999, BY ITS RESOLUTION NO. _____.

CHARLES G. ABDELNOUR, CITY CLERK
CITY OF SAN DIEGO
STATE OF CALIFORNIA

AN ASSESSMENT WAS LEVIED BY THE CITY COUNCIL OF THE CITY OF SAN DIEGO ON THE LOTS, PIECES, AND PARCELS OF LAND SHOWN ON THIS ASSESSMENT DIAGRAM. SAID ASSESSMENT WAS LEVIED ON THE _____ DAY OF _____, 1999; SAID ASSESSMENT DIAGRAM AND THE ASSESSMENT ROLL WERE RECORDED IN THE OFFICE OF THE SUPERINTENDENT OF STREETS OF THE CITY OF SAN DIEGO, STATE OF CALIFORNIA ON THE _____ DAY OF _____, 1999. REFERENCE IS MADE TO THE ASSESSMENT ROLL RECORDED IN THE OFFICE OF THE SUPERINTENDENT OF STREETS FOR THE EXACT AMOUNT OF EACH ASSESSMENT LEVIED AGAINST EACH PARCEL OF LAND SHOWN ON THIS ASSESSMENT DIAGRAM.

EXHIBIT B

**Estimated Budget – Revenue & Expense Statement
for Fiscal Year 2018**

EXHIBIT B

REVENUE AND EXPENSE STATEMENT

Hillcrest Maintenance Assessment District Fund 200094

	FY 2016 ACTUALS	FY 2017 ESTIMATE	FY 2018 PROPOSED
BEGINNING FUND BALANCE			
Surplus (or Deficit) from Prior Year	\$ 19,600.38	\$ 22,424.74	\$ 19,611.00
TOTAL BEGINNING FUND BALANCE	\$ 19,600.38	\$ 22,424.74	\$ 19,611.00
REVENUE			
Assessment Revenue	\$ 16,628.44	\$ 17,539.00	\$ 17,866.42
Interest	\$ 167.78	\$ 100.00	\$ 50.00
Other Contributions (Non Assessment Source)	\$ 7,358.51	\$ 6,973.00	\$ 6,409.00
TOTAL REVENUE	\$ 24,154.73	\$ 24,612.00	\$ 24,325.42
TOTAL BEGINNING FUND BALANCE & REVENUE	\$ 43,755.11	\$ 47,036.74	\$ 43,936.42
OPERATING EXPENSE			
Landscaping Improvements and Activities ⁽¹⁾	\$ 10,912.37	\$ 15,283.00	\$ 16,781.00
Tree Services	\$ -	\$ 1,500.00	\$ 1,500.00
Special Districts Administration Cost	\$ 10,418.00	\$ 10,643.00	\$ 14,463.00
TOTAL OPERATING EXPENSE	\$ 21,330.37	\$ 27,426.00	\$ 32,744.00
TOTAL EXPENSE	\$ 21,330.37	\$ 27,426.00	\$ 32,744.00
TOTAL ENDING FUND BALANCE	\$ 22,424.74	\$ 19,610.74	\$ 11,192.42
NET ANNUAL REVENUE (OR EXPENSE)	\$ 2,824.36	\$ (2,814.00)	\$ (8,418.58)

⁽¹⁾ Includes utility costs.

The District budget with full detail is available for public reference in the Maintenance Assessment Districts section of the Park and Recreation Department of the City of San Diego.

EXHIBIT C

**Preliminary Assessment Roll
for Fiscal Year 2018**

EXHIBIT C - Assessment Roll (Fiscal Year 2018)
Hillcrest Maintenance Assessment District

Parcel Number	Mid-City Sub-District	Total LFF ⁽¹⁾ (Lineal Feet)	Unit Cost (\$/LFF)	FY 2018 ⁽²⁾ Assessment	Owner Name
445 600 06 00	12	500.51	\$5.46	\$2,732.78	Uptown District Regency L L C
445 610 01 00	12	100.00	\$5.46	\$546.00	San Diego Income Properties Llc
445 610 02 00	12	100.00	\$5.46	\$546.00	San Diego Income Properties Llc
445 610 03 00	12	50.00	\$5.46	\$273.00	San Diego Income Properties Llc
445 610 10 00	12	75.00	\$5.46	\$409.50	Hillcrest Colonnade L P
445 610 14 00	12	275.00	\$5.46	\$1,501.50	Hillcrest Colonnade L P
445 620 12 00	12	50.00	\$5.46	\$273.00	Mcdonalds Corp <Dba Delaware Mcdonalds Corp>
445 620 13 00	12	50.00	\$5.46	\$273.00	Ray Lynn&Hiroko Family Trust 07-17-01
445 620 14 00	12	200.00	\$5.46	\$1,092.00	Hillcrest Village Square Partnership
445 620 18 00	12	150.00	\$5.46	\$819.00	Franchise Realty Interstate Corp
445 650 03 00	12	115.00	\$5.46	\$627.90	7-Eleven Inc <Lf> S E J Asset Management&Investme
452 151 03 00	12	50.00	\$5.46	\$273.00	Sutter Uptown L P
452 151 04 00	12	50.00	\$5.46	\$273.00	Gonzalez-Figuroa Rafael&Gonzalez Maria D L A
452 151 05 00	12	50.00	\$5.46	\$273.00	Gonzalez-Figuroa Rafael&Gonzalez Maria D L A
452 151 06 00	12	50.00	\$5.46	\$273.00	Hess Sandra
452 151 07 00	12	25.00	\$5.46	\$136.50	Hess Sandra
452 151 08 00	12	50.00	\$5.46	\$273.00	4061 38Th Street Llc
452 151 11 00	12	75.00	\$5.46	\$409.50	Barta James C Revocable Trust 12-01-99
452 151 29 00	12	100.00	\$5.46	\$546.00	Sutter Uptown L P
452 151 30 00	12	75.00	\$5.46	\$409.50	Theodore Family Trust 06-26-85
452 151 31 00	12	75.00	\$5.46	\$409.50	1295 University Family Ltd Ptnshp
452 152 01 00	12	36.00	\$5.46	\$196.56	Petrone Joseph G Jr
452 152 02 00	12	36.00	\$5.46	\$196.56	Burni Abed E R M Trust 12-30-14
452 156 13 00	12	75.00	\$5.46	\$409.50	The 1065 Group L L C
452 156 14 00	12	50.00	\$5.46	\$273.00	Disco Pizza L L C
452 156 15 00	12	50.00	\$5.46	\$273.00	Wong Gary Separate Property Trust 06-05-13
452 156 16 00	12	50.00	\$5.46	\$273.00	Joshlin Group L L C
452 156 17 00	12	25.00	\$5.46	\$136.50	B&E Trust 05-20-08
452 156 18 00	12	50.00	\$5.46	\$273.00	Degenhart George J&Toshiko T Trs
452 156 19 00	12	50.00	\$5.46	\$273.00	Kalamaras Family Trust 08-09-00
452 156 20 00	12	50.00	\$5.46	\$273.00	Solomons Mine L L C
452 156 21 00	12	80.50	\$5.46	\$439.52	Feldman 10Th Street Llc
452 191 01 00	12	54.23	\$5.46	\$296.10	Katz Peter R&Teresa M Family Trust 06-09-98
452 191 02 00	12	50.00	\$5.46	\$273.00	Katz Peter R Separate Property Trust 06-09-98
452 191 03 00	12	50.00	\$5.46	\$273.00	Katz Peter R Separate Property Trust 06-09-98
452 191 04 00	12	50.00	\$5.46	\$273.00	Chen Andrew D
452 191 05 00	12	25.00	\$5.46	\$136.50	Jannone Revocable Trust B 07-31-89
452 191 06 00	12	25.00	\$5.46	\$136.50	Churchman Margaret Trust 01-05-00
452 191 09 00	12	50.00	\$5.46	\$273.00	Marin Alexander
452 191 10 00	12	50.00	\$5.46	\$273.00	Lin Family Trust 06-04-13
452 191 23 00	12	100.00	\$5.46	\$546.00	Payne Clifton L Sr Revocable Trust 07-29-10

TOTAL		3,272.24	-	\$17,866	
--------------	--	-----------------	----------	-----------------	--

⁽¹⁾ Linear Front Footage.

⁽²⁾ FY 2018 is the City's Fiscal Year 2018, which begins July 1, 2017 and ends June 30, 2018.