



THE CITY OF SAN DIEGO



ANNUAL REPORT for Fiscal Year 2018

KINGS ROW MAINTENANCE ASSESSMENT DISTRICT

under the provisions of the

**San Diego Maintenance Assessment District Procedural Ordinance
of the San Diego Municipal Code**

**Prepared For
City of San Diego, California**



**Prepared By
EFS Engineering, Inc.
P.O. Box 22370
San Diego, CA 92192-2370
(858) 752-3490**

June 2017

CITY OF SAN DIEGO

Mayor

Kevin Faulconer

City Council Members

Barbara Bry District 1	Mark Kersey District 5 (Council President Pro Tem)
Lorie Zapf District 2	Chris Cate District 6
Chris Ward District 3	Scott Sherman District 7
Myrtle Cole District 4 (Council President)	David Alvarez District 8
Georgette Gómez District 9	

City Attorney

Mara W. Elliott

Chief Operating Officer

Scott Chadwick

City Clerk

Elizabeth Maland

Independent Budget Analyst

Andrea Tevlin

City Engineer

James Nagelvoort

Table of Contents

Annual Report for Fiscal Year 2018 Kings Row Maintenance Assessment District

Preamble.....	1
Executive Summary	2
Background	3
District Boundary	3
Project Description.....	3
Separation of General and Special Benefits.....	4
Cost Estimate.....	4
Annual Cost-Indexing	4
Method of Apportionment.....	5
Estimated Benefit of the Improvements.....	5
Apportionment Methodology	5
Equivalent Benefit Unit (EBU)	5
Unit Assessment Rates	5
Sample Calculations	6
Summary Results.....	7

EXHIBITS

Exhibit A: District Boundary

Exhibit B: Estimated Budget – Revenue & Expense Statement
for Fiscal Year 2018

Exhibit C: Preliminary Assessment Roll for Fiscal Year 2018

Annual Report for Fiscal Year 2018

Kings Row

Maintenance Assessment District

Preamble

Pursuant to §65.0220 of the “San Diego Maintenance Assessment District Procedural Ordinance” (being Division 2, Article 5, Chapter 6 of the *San Diego Municipal Code*) and City of San Diego Council Resolution No. R-310618 passed on July 22, 2016, authorizing the continued levy of assessments for the life of the KINGS ROW MAINTENANCE ASSESSMENT DISTRICT (hereinafter referred to as “District”), and in accordance with applicable provisions of “Proposition 218” (being Article XIID of the California Constitution), and provisions of the “Proposition 218 Omnibus Implementation Act” (being California Senate Bill 919) (the aforementioned provisions are hereinafter referred to collectively as “applicable law”), and in accordance with Resolution No. _____, adopted by the CITY COUNCIL OF THE CITY OF SAN DIEGO, COUNTY OF SAN DIEGO, STATE OF CALIFORNIA, and in connection with the annual proceedings for the District, EFS Engineering, Inc., as Assessment Engineer to the City of San Diego, submits herewith this annual report for the District as required by §65.0220 of the “San Diego Maintenance Assessment District Procedural Ordinance.”

DATE OF FINAL PASSAGE BY THE CITY OF SAN DIEGO,
COUNTY OF SAN DIEGO, STATE OF CALIFORNIA, ON THE
_____ DAY OF _____, 2017.

Elizabeth Maland, CITY CLERK
CITY OF SAN DIEGO
STATE OF CALIFORNIA

Executive Summary

Project: Kings Row
Maintenance Assessment District

Apportionment Method: Equivalent Benefit Unit (EBU)

	FY 2017	FY 2018 ⁽¹⁾	Maximum ⁽²⁾ Authorized
Total Parcels Assessed:	66	66	--
Total Estimated Assessment:	\$12,546	\$12,546	--
<i>Zone 1</i>	\$5,186	\$5,186	--
<i>Zone 2</i>	\$7,360	\$7,360	--
Total Number of EBUs:	66.00	66.00	--
<i>Zone 1</i>	43.00	43.00	--
<i>Zone 2</i>	23.00	23.00	--
Assessment per EBU:			
<i>Zone 1</i>	\$120.60	\$120.60	\$120.60
<i>Zone 2</i>	\$320.00	\$320.00	\$531.73 ⁽³⁾

⁽¹⁾ FY 2018 is the City's Fiscal Year 2018, which begins July 1, 2017 and ends June 30, 2018. Total Parcels Assessed, Total Estimated Assessment, and assessment apportionment factors may vary from prior fiscal year values due to parcel changes and/or land use re-classifications.

⁽²⁾ Maximum authorized assessment rate for Zone 2 is subject to cost-indexing as approved by property owners at the time of District formation.

⁽³⁾ Prior fiscal year's maximum authorized annual assessment rate increased by cost-indexing factor of 1.96%.

Annual Cost-Indexing: Indexing of assessments is not permitted for Zone 1. The maximum authorized assessment rates for Zone 2 are cost-indexed and will increase (or decrease) annually based on the annual change in the *San Diego Consumer Price Index for Urban Consumers* (SDCPI-U).

Background

The Kings Row Maintenance Assessment District (District), originally known as the “Kings Row Subdivision Landscape Maintenance District,” was established by the City of San Diego (City) on March 8, 1994 by City Council Resolution R-283516. On July 17, 2000 by City Council Resolution R-293460, the City annexed the Village at Euclid development into the District as “Zone 2.” The purpose of the District was, and still is, to fund specifically identified improvements and activities within the boundary of the District.

In conformity with §65.0221 of the “San Diego Maintenance Assessment District Procedural Ordinance,” the City adopted Resolution No. R-310618 on July 22, 2016, approving the annual budget and assessments for Fiscal Year 2017, and authorizing the levy of the assessments for the life of the District, consistent with the benefit findings and assessment apportionment method contained in the approved formational and all subsequently updated Engineer’s Reports (Engineer’s Reports). The Engineer’s Reports are on file with the City Clerk, and incorporated herein by reference.

The District is authorized and administered under the provisions of the “San Diego Maintenance Assessment District Procedural Ordinance.” This annual report has been prepared pursuant to the requirements of §65.0220 of the “San Diego Maintenance Assessment District Procedural Ordinance.”

District Boundary

The District boundary is generally depicted in **Exhibit A**. The District Boundary Map and Assessment Diagram are on file in the Maintenance Assessment Districts section of the Park and Recreation Department of the City, and, by reference, are made a part of this annual report.

Project Description

The authorized assessments will be used to fund specifically identified improvements and activities within the District. The District improvements and activities generally consist of maintenance and servicing of landscaping along a noise abatement wall fronting Euclid Avenue within Zone #1. Zone #2 includes provision for additional maintenance of landscaping along Euclid Avenue and Ocean View Boulevard. The approximate location of the improvements is generally shown on **Exhibit A**.

For additional detail as to the location, type of improvements, and activities performed by the District, please refer to the maps, improvement plans, engineering drawings, maintenance specifications, the Engineer's Reports and other associated documents on file with the Maintenance Assessment Districts section of the Park and Recreation Department of the City. These documents, collectively, are incorporated herein by reference and made part of this annual report.

Separation of General and Special Benefits

The identified improvements and activities provide benefits to the parcels located within the District. These benefits are "special benefits" to the extent that they are above and beyond the City's standard level of service, and exclusive of those "general benefits" provided to the public at large or properties located outside the District. By law, only "special benefits" are assessable.

The assessments presented in this annual report are based on the cost of improvements and activities determined to provide "special benefits" in accordance with the Engineer's Reports. For additional detail relative to the separation and quantification of general and special benefits for the District, please refer to the Engineer's Reports, on file with the Maintenance Assessment Districts section of the Park and Recreation Department of the City.

Cost Estimate

The estimated annual budget (Revenue & Expense Statement) for Fiscal Year 2018 (July 1, 2017 to June 30, 2018 period) is included as **Exhibit B**. The "Other Contributions (Non Assessment Source)" revenue contained in the budget includes the value of improvements and activities determined to provide "general benefits." The District budget with full detail is available for public reference in the Maintenance Assessment Districts section of the Park and Recreation Department of the City.

Annual Cost-Indexing

The maximum authorized assessment for Zone 1 parcels is not permitted to increase without a vote of the affected property owners. However, for Zone 2 parcels, the maximum authorized assessment, set forth in the Engineer's Reports, is permitted to increase annually based on the published change in the "San Diego Consumer Price Index for Urban Consumers" (SDCPI-U). The annual change in second half SDCPI-U values, as compiled by the *U.S. Bureau of Labor Statistics* (see www.bls.gov), for the prior year period was from 271.526 to

276.837 (a 1.96% increase). In accordance with the approved cost-indexing provisions, the maximum authorized assessment rate for Zone 2 has been increased by 1.96%.

Method of Apportionment

Estimated Benefit of the Improvements

The Transportation Element of the City's General Plan and the general policy recommendations found in the local Community Plan establish several goals for the community's transportation system and urban design features. The District improvements and activities are consistent with the plans' goals for safety and pleasing aesthetics.

Apportionment Methodology

The assessment, associated with District improvement and activities, for a given parcel is equal to the parcel's total equivalent benefit units (EBUs) multiplied by the unit assessment rate, as shown in the following equation:

$$\text{Total Assessment} = \text{Total EBUs} \times \text{Unit Assessment Rate}$$

Equivalent Benefit Unit (EBU)

Due to the homogeneous nature of the land use within the District (i.e., entirely single family residential parcels) and relative uniformity of benefit to the respective parcels within each zone, each parcel within a given zone will be assessed equally (i.e., each parcel will be assigned 1 EBU). In other words, the total cost of District improvements and activities within a given zone will be equally assessed to all properties within the zone.

Unit Assessment Rates

For each zone, the unit assessment rate for maintenance (unit cost per EBU) is equal to the total maintenance cost divided by the total EBUs:

$$\text{Unit Assessment Rate} = \text{Total Maintenance Cost} / \text{Total EBUs}$$

Sample Calculations

As described above, the number of Equivalent Benefit Units (EBUs) assigned to each parcel in the District has been calculated based on each parcel's land use and the identified apportionment factors, as shown in the following equation:

$$\text{EBUs} = (\text{Acres or Units}) \times \text{Land Use Factor}$$

Shown below is a sample EBU calculation for the most common land use found in the District.

- **1 Single-Family Residence**

$$\text{EBUs} = 1 \text{ unit} \times 1.00 = 1.00 \text{ EBUs}$$

The total assessment for each parcel in the District is based on the calculated EBUs for the parcel and the applicable unit assessment rate for the zone in which the parcel is located, as shown in the following equation:

$$\text{Total Assessment} = \text{Total EBUs} \times \text{Unit Assessment Rate}$$

Based on the above methodology, EBUs, unit assessment rates, and total assessment calculated for each parcel can be found in the Assessment Roll (**Exhibit C**).

Summary Results

The District Boundary is presented in **Exhibit A**.

An estimate of the annual costs of the improvements and activities provided by the District is included as **Exhibit B**.

The assessment methodology utilized is as described in the text of this annual report. Based on this methodology, Fiscal Year 2018 District assessment for each parcel were calculated and are shown in the Preliminary Assessment Roll (**Exhibit C**).

Each lot or parcel of land within the District has been identified by unique County Assessor's Parcel Number in the Preliminary Assessment Roll and on the Boundary Map and Assessment Diagram referenced herein.

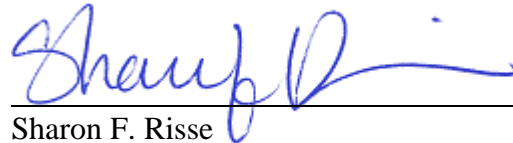
This annual report has been prepared and respectfully submitted by:

EFS ENGINEERING, INC.



Eugene F. Shank, PE

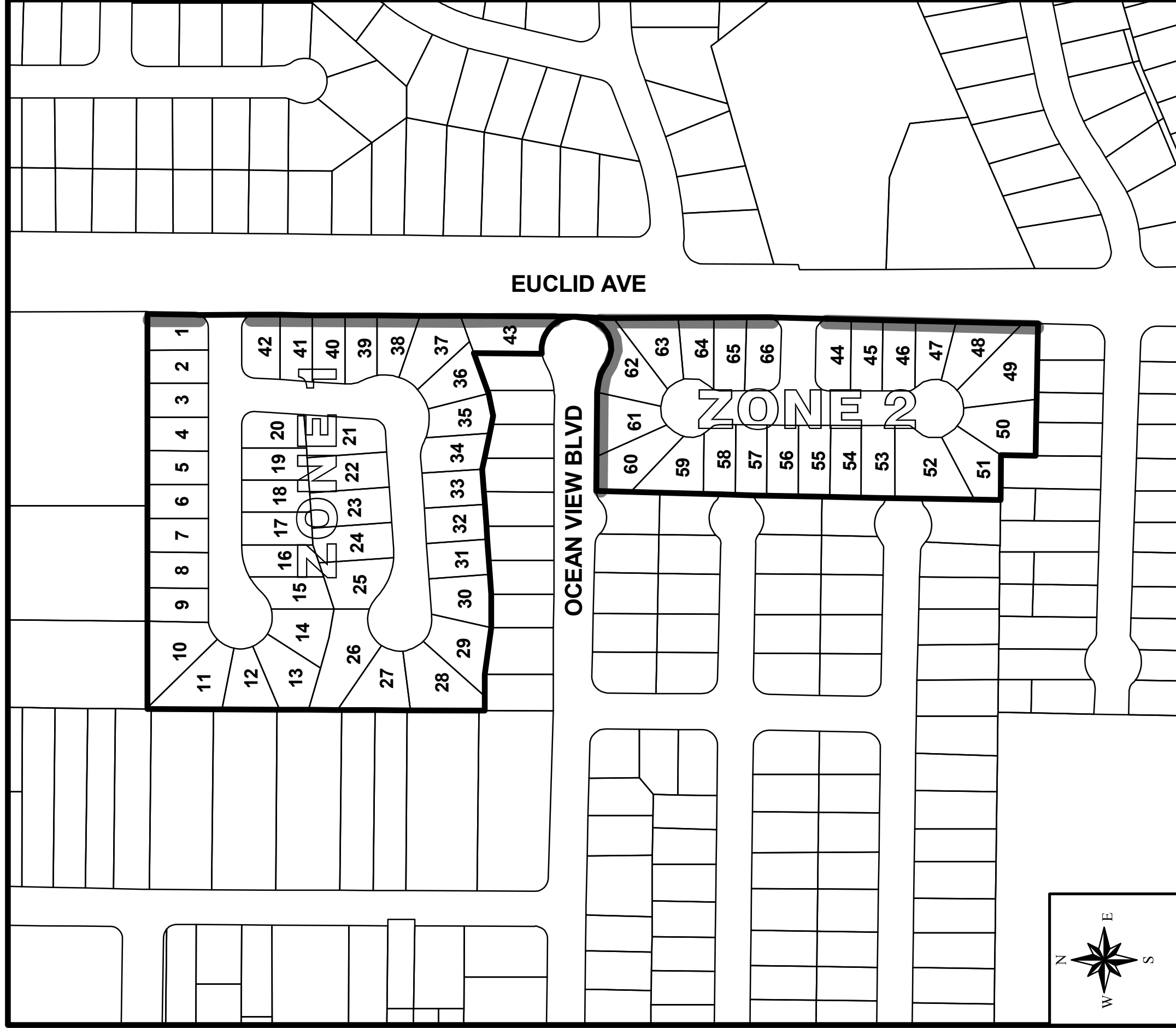
C 52792



Sharon F. Risse

EXHIBIT A

District Boundary



BOUNDARY MAP & ASSESSMENT DIAGRAM

FILED IN THE OFFICE OF THE CITY CLERK OF THE CITY OF SAN DIEGO, STATE OF CALIFORNIA, THIS ____ DAY OF _____, 2000.

PREPARED BY:
BOYLE ENGINEERING CORPORATION
 7807 Conroy Court, Suite 200, San Diego, California 92111 (619) 268-8080

I HEREBY CERTIFY THAT THE WITHIN MAP SHOWING PROPOSED BOUNDARIES OF THE KINGS ROW MAINTENANCE ASSESSMENT DISTRICT, CITY OF SAN DIEGO, STATE OF CALIFORNIA, WAS APPROVED BY THE CITY COUNCIL AT A REGULAR MEETING THEREOF, HELD ON THE ____ DAY OF _____, 2000, BY ITS RESOLUTION NO. _____.

CHARLES G. ABDELNOUR, CITY CLERK
 CITY OF SAN DIEGO
 STATE OF CALIFORNIA

AN ASSESSMENT WAS LEVIED BY THE CITY COUNCIL OF THE CITY OF SAN DIEGO ON THE LOTS, PIECES, AND PARCELS OF LAND SHOWN ON THIS ASSESSMENT DIAGRAM. SAID ASSESSMENT WAS LEVIED ON THE ____ DAY OF _____, 2000. SAID ASSESSMENT DIAGRAM AND THE ASSESSMENT ROLL WERE RECORDED IN THE OFFICE OF THE SUPERINTENDENT OF STREETS OF THE CITY OF SAN DIEGO, STATE OF CALIFORNIA ON THE ____ DAY OF _____, 2000. REFERENCE IS MADE TO THE ASSESSMENT ROLL RECORDED IN THE OFFICE OF THE SUPERINTENDENT OF STREETS FOR THE EXACT AMOUNT OF EACH ASSESSMENT LEVIED AGAINST EACH PARCEL OF LAND SHOWN ON THIS ASSESSMENT DIAGRAM.

NOTE:
 FOR A DETAILED DESCRIPTION OF THE LINES AND DIMENSIONS OF LOTS OR PARCELS SHOWN ON THIS MAP, REFER TO THE COUNTY ASSESSOR'S MAPS WHICH SHALL GOVERN WITH RESPECT TO ALL DETAILS CONCERNING THE LINES AND DIMENSIONS OF SUCH LOTS OR PARCELS.

LEGEND:

- District Boundary
- District Improvements
- Parcel Line
- Diagram Number



CITY OF
 SAN DIEGO

KINGS ROW
 MAINTENANCE ASSESSMENT DISTRICT

W.O.

DATE: MAY 2000

REVS:

EXHIBIT B

**Estimated Budget – Revenue & Expense Statement
for Fiscal Year 2018**

EXHIBIT B

REVENUE AND EXPENSE STATEMENT

Kings Row Maintenance Assessment District Fund 200065

	FY 2016 ACTUALS	FY 2017 ESTIMATE	FY 2018 PROPOSED
BEGINNING FUND BALANCE			
Surplus (or Deficit) from Prior Year	\$ 5,492.23	\$ 7,237.84	\$ 8,012.00
TOTAL BEGINNING FUND BALANCE	\$ 5,492.23	\$ 7,237.84	\$ 8,012.00
REVENUE			
Assessment Revenue	\$ 11,805.33	\$ 12,546.00	\$ 12,545.80
Interest	\$ 50.47	\$ 40.00	\$ 40.00
Other Contributions (Non Assessment Source)	\$ 1,076.11	\$ 1,459.00	\$ 1,212.00
TOTAL REVENUE	\$ 12,931.91	\$ 14,045.00	\$ 13,797.80
TOTAL BEGINNING FUND BALANCE & REVENUE	\$ 18,424.14	\$ 21,282.84	\$ 21,809.80
OPERATING EXPENSE			
Landscaping Improvements and Activities ⁽¹⁾	\$ 4,186.30	\$ 5,781.48	\$ 5,494.00
Tree Services	\$ -	\$ 500.00	\$ 500.00
Special Districts Administration Cost	\$ 7,000.00	\$ 6,989.00	\$ 7,010.00
Other (Unallocated Reserve)	\$ -	\$ -	\$ 1,200.00
TOTAL OPERATING EXPENSE	\$ 11,186.30	\$ 13,270.48	\$ 14,204.00
TOTAL EXPENSE	\$ 11,186.30	\$ 13,270.48	\$ 14,204.00
TOTAL ENDING FUND BALANCE	\$ 7,237.84	\$ 8,012.36	\$ 7,605.80
NET ANNUAL REVENUE (OR EXPENSE)	\$ 1,745.61	\$ 774.52	\$ (406.20)

⁽¹⁾ Includes utility costs.

The District budget with full detail is available for public reference in the Maintenance Assessment Districts section of the Park and Recreation Department of the City of San Diego.

EXHIBIT C

**Preliminary Assessment Roll
for Fiscal Year 2018**

EXHIBIT C - Assessment Roll (Fiscal Year 2018)
Kings Row Maintenance Assessment District

Parcel Number	Apportionment Factors					FY 2018 ⁽²⁾		Owner Name
	Units	Zone	Land Use ⁽¹⁾	Land Use Factor ⁽¹⁾	Total EBUs	Unit Cost (\$/Ebu)	Total Assessment	
548 243 01 00	1.00	1	SFD	1.00	1.00	\$120.60	\$120.60	Ruvalcaba Sergio A
548 243 02 00	1.00	1	SFD	1.00	1.00	\$120.60	\$120.60	Nuanhngam Chris&Manokoune Ashley
548 243 03 00	1.00	1	SFD	1.00	1.00	\$120.60	\$120.60	Luong Luong Trung
548 243 04 00	1.00	1	SFD	1.00	1.00	\$120.60	\$120.60	Xayasouk Khampheuy&Phet
548 243 05 00	1.00	1	SFD	1.00	1.00	\$120.60	\$120.60	Bell Cora
548 243 06 00	1.00	1	SFD	1.00	1.00	\$120.60	\$120.60	Henderson Paul&Cole Karen M
548 243 07 00	1.00	1	SFD	1.00	1.00	\$120.60	\$120.60	Ho Hong&Tran Bich Khue Thi
548 243 08 00	1.00	1	SFD	1.00	1.00	\$120.60	\$120.60	Brown Eison Noel Labaco
548 243 09 00	1.00	1	SFD	1.00	1.00	\$120.60	\$120.60	Diallo Mamadou S&Hadyatou
548 243 10 00	1.00	1	SFD	1.00	1.00	\$120.60	\$120.60	Labaco Donato A&Haidee
548 243 11 00	1.00	1	SFD	1.00	1.00	\$120.60	\$120.60	Brown Living Trust 03-19-16
548 243 12 00	1.00	1	SFD	1.00	1.00	\$120.60	\$120.60	Block Elaine M 2003 Trust 07-31-03
548 243 13 00	1.00	1	SFD	1.00	1.00	\$120.60	\$120.60	Lai Michael Narong
548 243 14 00	1.00	1	SFD	1.00	1.00	\$120.60	\$120.60	Le Andrew T&Do Mylee H
548 243 15 00	1.00	1	SFD	1.00	1.00	\$120.60	\$120.60	Randolph Anita E
548 243 16 00	1.00	1	SFD	1.00	1.00	\$120.60	\$120.60	Story Frances Revocable 2005 Trust 10-07-05
548 243 17 00	1.00	1	SFD	1.00	1.00	\$120.60	\$120.60	Malcolm Shennica
548 243 18 00	1.00	1	SFD	1.00	1.00	\$120.60	\$120.60	Myers Anthony J Jr&Lynette
548 243 19 00	1.00	1	SFD	1.00	1.00	\$120.60	\$120.60	Arana Hermilio&Guadalupe
548 243 20 00	1.00	1	SFD	1.00	1.00	\$120.60	\$120.60	Harkless Thomas H&Tracy R
548 243 21 00	1.00	1	SFD	1.00	1.00	\$120.60	\$120.60	Hernandez J Reyes R&Romero Maria Y
548 243 22 00	1.00	1	SFD	1.00	1.00	\$120.60	\$120.60	Bogan Willie R C&Kimberly J
548 243 23 00	1.00	1	SFD	1.00	1.00	\$120.60	\$120.60	Ridley Willie M Jr&Carthine
548 243 24 00	1.00	1	SFD	1.00	1.00	\$120.60	\$120.60	Thach Bang&Nguyen Lana N
548 243 25 00	1.00	1	SFD	1.00	1.00	\$120.60	\$120.60	Brewer Wilbert&Williams Kimberly R
548 243 26 00	1.00	1	SFD	1.00	1.00	\$120.60	\$120.60	Pham Kathy
548 243 27 00	1.00	1	SFD	1.00	1.00	\$120.60	\$120.60	Lange George O&Lange-Velazquez Stephanie
548 243 28 00	1.00	1	SFD	1.00	1.00	\$120.60	\$120.60	Chanthavisouk Saynath&Ly
548 243 29 00	1.00	1	SFD	1.00	1.00	\$120.60	\$120.60	Cowling Lee A&Adoration
548 243 30 00	1.00	1	SFD	1.00	1.00	\$120.60	\$120.60	Garcia Juan L&Maria E
548 243 31 00	1.00	1	SFD	1.00	1.00	\$120.60	\$120.60	Mendoza Myrna L
548 243 32 00	1.00	1	SFD	1.00	1.00	\$120.60	\$120.60	Do Elvis L&Ho Debbie L
548 243 33 00	1.00	1	SFD	1.00	1.00	\$120.60	\$120.60	Duncan Theotis W&Lizzie M
548 243 34 00	1.00	1	SFD	1.00	1.00	\$120.60	\$120.60	Sommay David
548 243 35 00	1.00	1	SFD	1.00	1.00	\$120.60	\$120.60	Huynh Tina Thi
548 243 36 00	1.00	1	SFD	1.00	1.00	\$120.60	\$120.60	Faulk Joseph D&Linda M
548 243 37 00	1.00	1	SFD	1.00	1.00	\$120.60	\$120.60	Aguilar Gerardo
548 243 38 00	1.00	1	SFD	1.00	1.00	\$120.60	\$120.60	Mason Robert L <Dd>
548 243 39 00	1.00	1	SFD	1.00	1.00	\$120.60	\$120.60	Nakhonthap Isaraphone K
548 243 40 00	1.00	1	SFD	1.00	1.00	\$120.60	\$120.60	Thai Thai Living Trust 01-10-14
548 243 41 00	1.00	1	SFD	1.00	1.00	\$120.60	\$120.60	Nguyen Cam Ngoc&My Uyen
548 243 42 00	1.00	1	SFD	1.00	1.00	\$120.60	\$120.60	Tran Huy&Do Tam
548 243 53 00	1.00	1	SFD	1.00	1.00	\$120.60	\$120.60	Salgado Maria
SUB-TOTAL ZONE 1	-	-	-	-	43.00	-	\$5,186	

EXHIBIT C - Assessment Roll (Fiscal Year 2018)
Kings Row Maintenance Assessment District

Parcel Number	Apportionment Factors				FY 2018 ⁽²⁾		Owner Name	
	Units	Zone	Land Use ⁽¹⁾	Land Use Factor ⁽¹⁾	Total EBUs	Unit Cost (\$/Ebu)		Total Assessment
548 540 01 00	1.00	2	SFD	1.00	1.00	\$320.00	\$320.00	Medved Timothy&Palamy Family Trust 01-12-1
548 540 02 00	1.00	2	SFD	1.00	1.00	\$320.00	\$320.00	Vu Celine
548 540 03 00	1.00	2	SFD	1.00	1.00	\$320.00	\$320.00	Bui Hoa Tan&Nguyen Vuonghoa Cao
548 540 04 00	1.00	2	SFD	1.00	1.00	\$320.00	\$320.00	Hailey Walter&Rosalie B
548 540 05 00	1.00	2	SFD	1.00	1.00	\$320.00	\$320.00	Yeldell Family Trust 11-05-03
548 540 06 00	1.00	2	SFD	1.00	1.00	\$320.00	\$320.00	Walker Shujen Y
548 540 07 00	1.00	2	SFD	1.00	1.00	\$320.00	\$320.00	Ly Nguyen Chon
548 540 08 00	1.00	2	SFD	1.00	1.00	\$320.00	\$320.00	Robinson Hope I
548 540 09 00	1.00	2	SFD	1.00	1.00	\$320.00	\$320.00	Serna Blanca
548 540 10 00	1.00	2	SFD	1.00	1.00	\$320.00	\$320.00	Nguyen Joe Trung&Lu Mindee
548 540 11 00	1.00	2	SFD	1.00	1.00	\$320.00	\$320.00	Le Joseph Hai&Vu Thuy Thi Bich
548 540 12 00	1.00	2	SFD	1.00	1.00	\$320.00	\$320.00	Jordon Heather M
548 540 13 00	1.00	2	SFD	1.00	1.00	\$320.00	\$320.00	Le Joseph Hai&Vu Thuy Bich Thi
548 540 14 00	1.00	2	SFD	1.00	1.00	\$320.00	\$320.00	Mahaphom Khayka C&Nokphalat
548 540 15 00	1.00	2	SFD	1.00	1.00	\$320.00	\$320.00	Chapman Andrew O&Arlesa D
548 540 16 00	1.00	2	SFD	1.00	1.00	\$320.00	\$320.00	Pugal Arnulfo&Maria P
548 540 17 00	1.00	2	SFD	1.00	1.00	\$320.00	\$320.00	Tran Leon&Bui Vivian
548 540 18 00	1.00	2	SFD	1.00	1.00	\$320.00	\$320.00	Nieves Lopez Family Trust 03-08-05
548 540 19 00	1.00	2	SFD	1.00	1.00	\$320.00	\$320.00	Salas Hector&Sillas Claudia S
548 540 20 00	1.00	2	SFD	1.00	1.00	\$320.00	\$320.00	Schmidt Adrian J&Cherryvel M
548 540 21 00	1.00	2	SFD	1.00	1.00	\$320.00	\$320.00	Walter Flora R
548 540 22 00	1.00	2	SFD	1.00	1.00	\$320.00	\$320.00	Vongsavath Mokhala&Pany
548 540 23 00	1.00	2	SFD	1.00	1.00	\$320.00	\$320.00	Anousaya Phoxay&Khamamone
SUB-TOTAL ZONE 2	-	-	-	-	23.00	-	\$7,360	

TOTAL	-	-	-	-	66.00	-	\$12,546	
--------------	---	---	---	---	--------------	---	-----------------	--

⁽¹⁾ Refer to Assessment Engineer's Report for description of Land Use and applicable Land Use Factor.

⁽²⁾ FY 2018 is the City's Fiscal Year 2018, which begins July 1, 2017 and ends June 30, 2018.