

Federal Blvd. Pocket Park

Proposed General Development Plan

Colina del Sol Community
Recreation Group

May 31, 2023

The Team



Trestles Environmental Corporation



Groundwork
SAN DIEGO
Chollas Creek





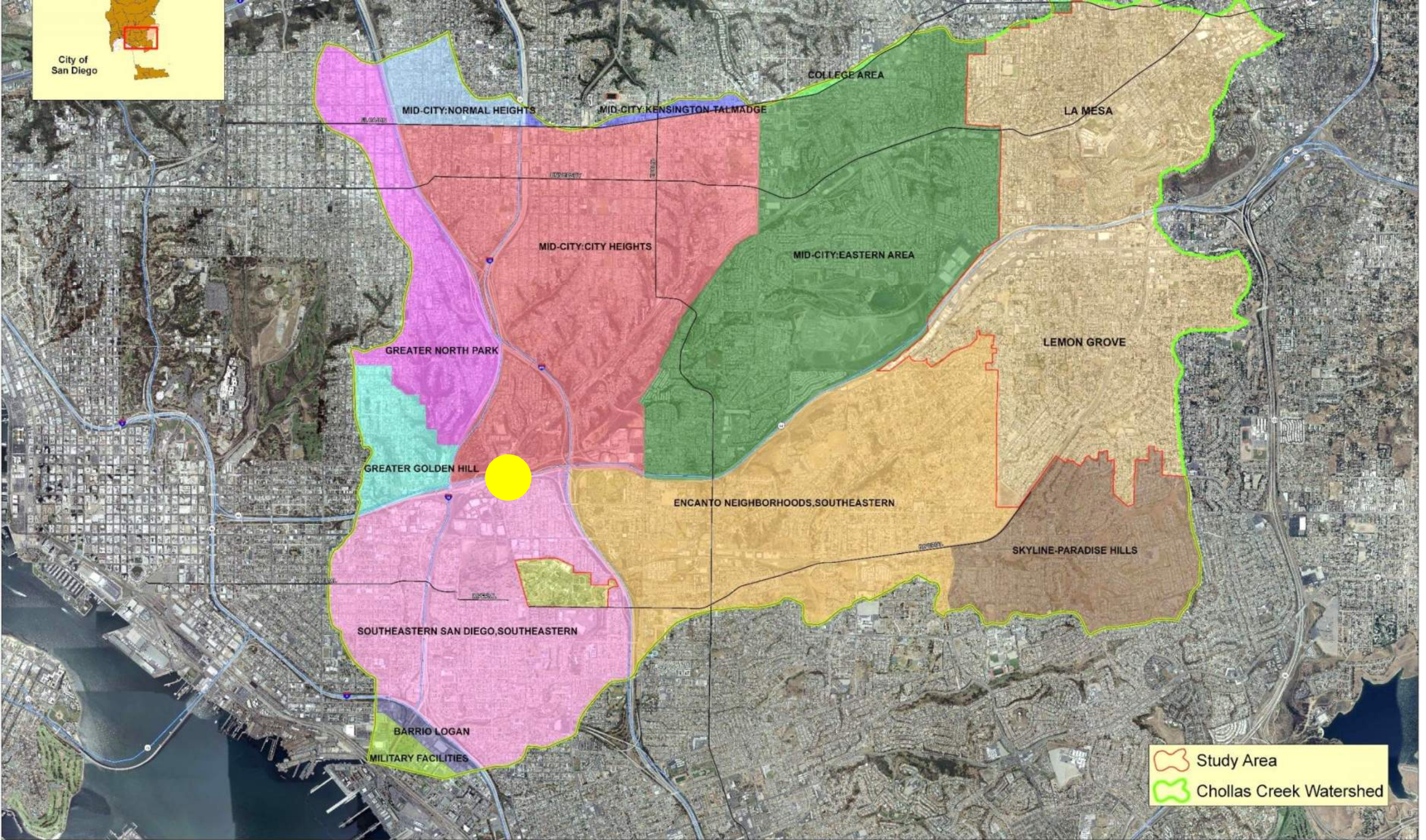
GROUNDWORK
San Diego Chollas Creek

History

Groundwork San Diego has been working with the communities of Oak Park and Webster, including Eastern Area and City Heights Planning Groups, since 2016 to design the the Federal Blvd De-channelization and Trail project. The project, scheduled for construction in 2022, will remove concrete from a reach of Chollas Creek, delivering badly need water quality improvement benefits. It will address the community's longstanding interest for green space, parks, and trails by developing

- A trail lined by native trees and shrubs extending from Home Ave to Berardini Field, connecting on the east to the Oak Park Trail and on the west to the I-15 Corridor Trail, currently being designed.
- A pocket park on the west-end triangular dirt lot, currently used (against community wishes) as a truck stop and construction stage.

City of San Diego



MID-CITY:NORMAL HEIGHTS

MID-CITY:KENSINGTON-TALMADGE

COLLEGE AREA

LA MESA

MID-CITY:CITY HEIGHTS

MID-CITY:EASTERN AREA

GREATER NORTH PARK

LEMON GROVE

GREATER GOLDEN HILL

ENCANTO NEIGHBORHOODS,SOUTHEASTERN

SOUTHEASTERN SAN DIEGO,SOUTHEASTERN

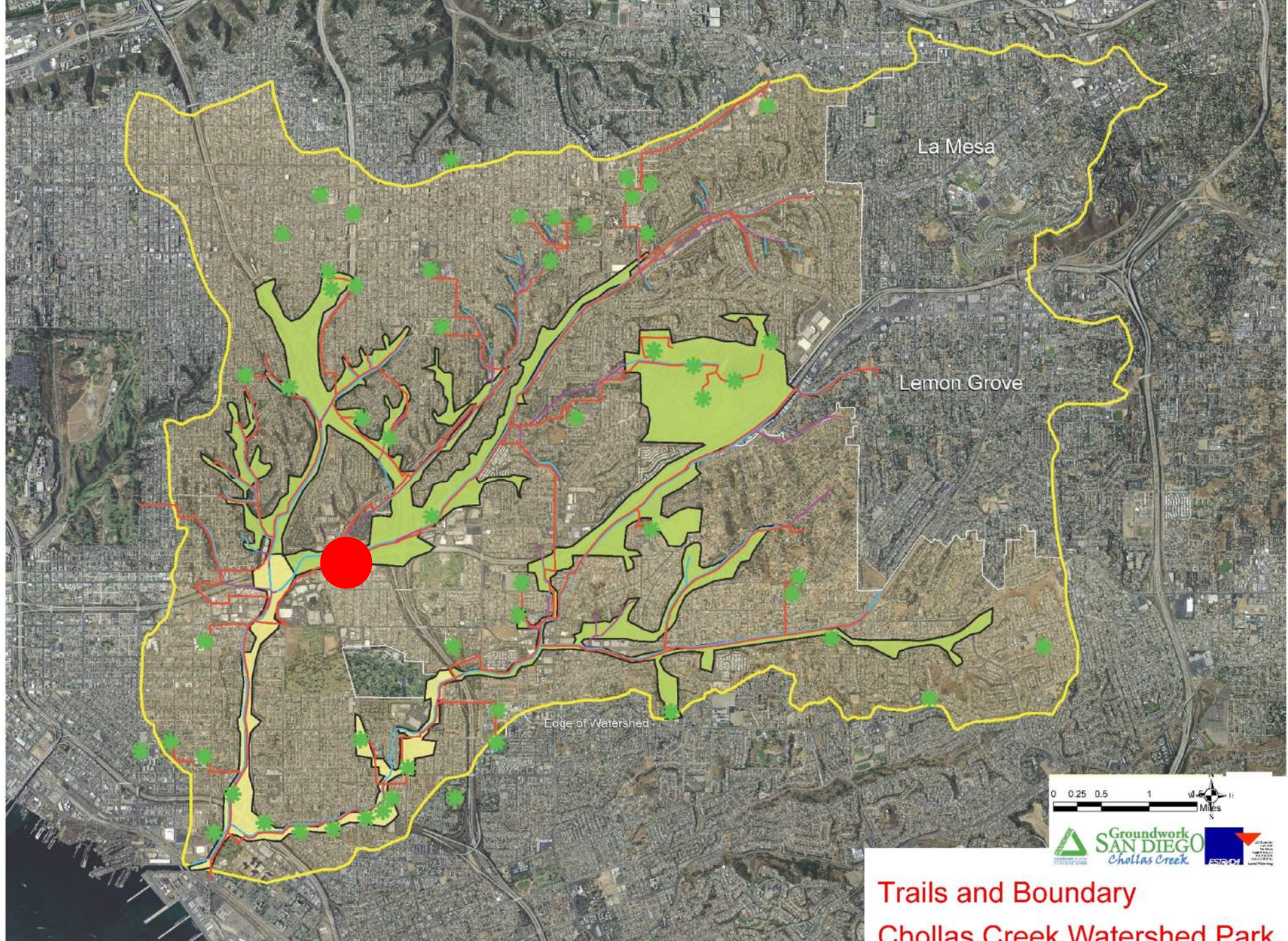
SKYLINE-PARADISE HILLS

BARRIO LOGAN

MILITARY FACILITIES

Study Area

Chollas Creek Watershed



Trails and Boundary
Chollas Creek Watershed Park

The Chollas Creek Watershed Regional Park

The City of San Diego Parks Master Plan

A Long Overdue Designation of Chollas Creek Watershed as a Regional Park

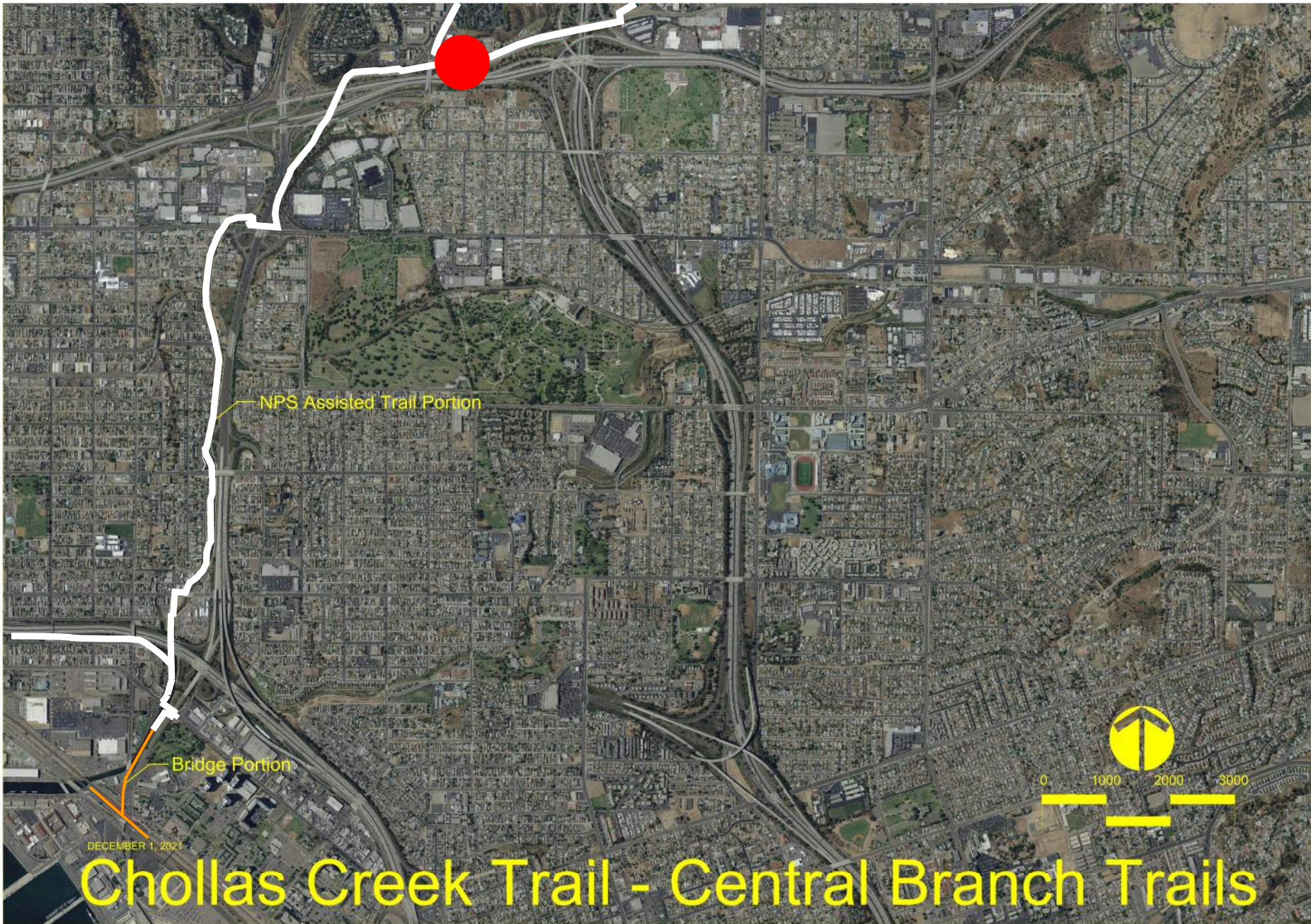




Vicinity Map *(Not to Scale)*



NORTH





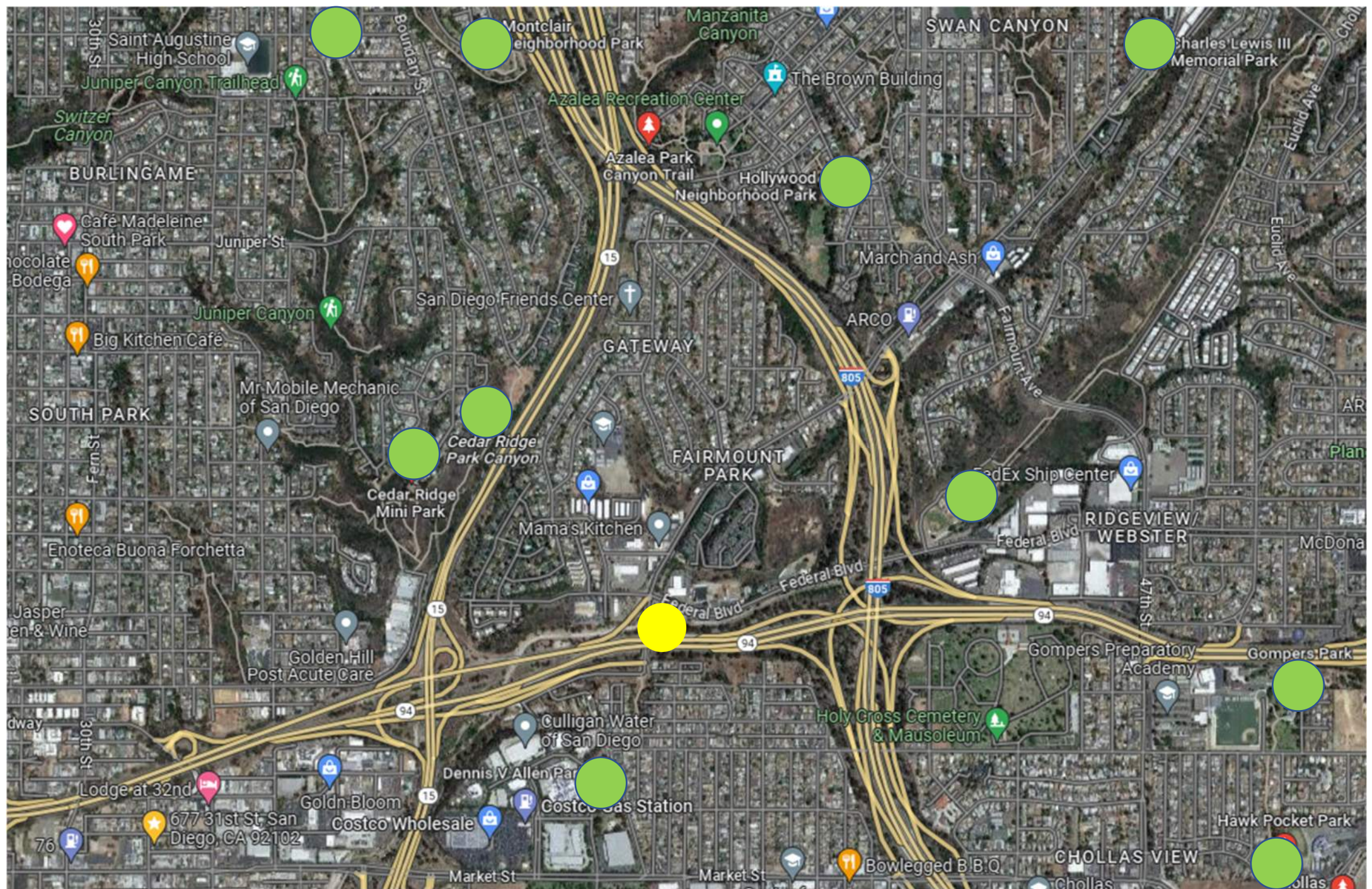
Future Trail

Park Site

Revegetated Portion of Creek

Future Chollas Creek Trail

Future Mt Hope Trail



Saint Augustine High School

Juniper Canyon Trailhead

Switzer Canyon

BURLINGAME

Café Madeleine South Park

Chocolate Bodega

Big Kitchen Café

Juniper Canyon

SOUTH PARK

Mr Mobile Mechanic of San Diego

Cedar Ridge Mini Park

Cedar Ridge Park Canyon

Enoteca Buona Forchetta

Jasper and Wine

Golden Hill Post Acute Care

GATEWAY

FAIRMOUNT PARK

Mama's Kitchen

FedEx Ship Center

RIDGEVIEW/WEBSTER

Federal Blvd

Federal Blvd

Federal Blvd

Gompers Preparatory Academy

Gompers Park

Holy Cross Cemetery & Mausoleum

Culligan Water of San Diego

Dennis V. Allen Park

Lodge at 32nd

677 31st St, San Diego, CA 92102

Goldn Bloom Costco Wholesale

Costco Gas Station

Market St

Market St

Bowlegged B.B.Q

CHOLLAS VIEW

Hawk Pocket Park

Chollas

SWAN CANYON

Montclair neighborhood Park

Manzanita Canyon

Charles Lewis III Memorial Park

Azalea Recreation Center

The Brown Building

Azalea Park Canyon Trail

Hollywood Neighborhood Park

March and Ash

ARCO

Fairmount Ave

Euclid Ave

Euclid Ave

Euclid Ave

Euclid Ave

Euclid Ave

Euclid Ave

Euclid Ave

Euclid Ave

Boundary St

Juniper St

Fern St

30th St

15

94

15

15

805

805

94

94

76

15

94

15

94

805

805

15

805

805

94

94

76

15

94

15

94

805

805

15

805

805

94

94

76

15

94

15

94

805

805

15

805

805

94

94

76

15

94

15

94

805

805

15

805

805

94

94

76

15

94

15

94

805

805

15

805

805

94

94

76

15

94

15

94

805

805

15

805

805

94

94

76

15

94

15

94

805

805

15

805

805

94

94

76

15

94

15

94

805

805

15

805

805

94

94

76

15

94

15

94

805

805

15

805

805

94

94

76

15

94

15

94

805

805

15

805

805

94

94

76

15

94

15

94

805

805

15

805

805

94

94

76

15

94

15

94

805

805

15

805

805

94

94

76

15

94

15

94

805

805

15

805

805

94

94

76

15

94

15

94

805

805

15

805

805

94

94

76

15

94

15

94

805

805

15

805

805

94

94

76

15

94

15

94

805

805

15

805

805

94

94

76

15

94

15

94

805

805

15

805

805

94

94

76

15

94

15

94

805

805

15

805

805

94

94

76

15

94

15

94

805

805

15

805

805

94

94

76

15

94

15

94

805

805

15

805

805

94

94

76

15

94

15

94

805

805

15

805

805

94

94

76

15

94

15

94

805

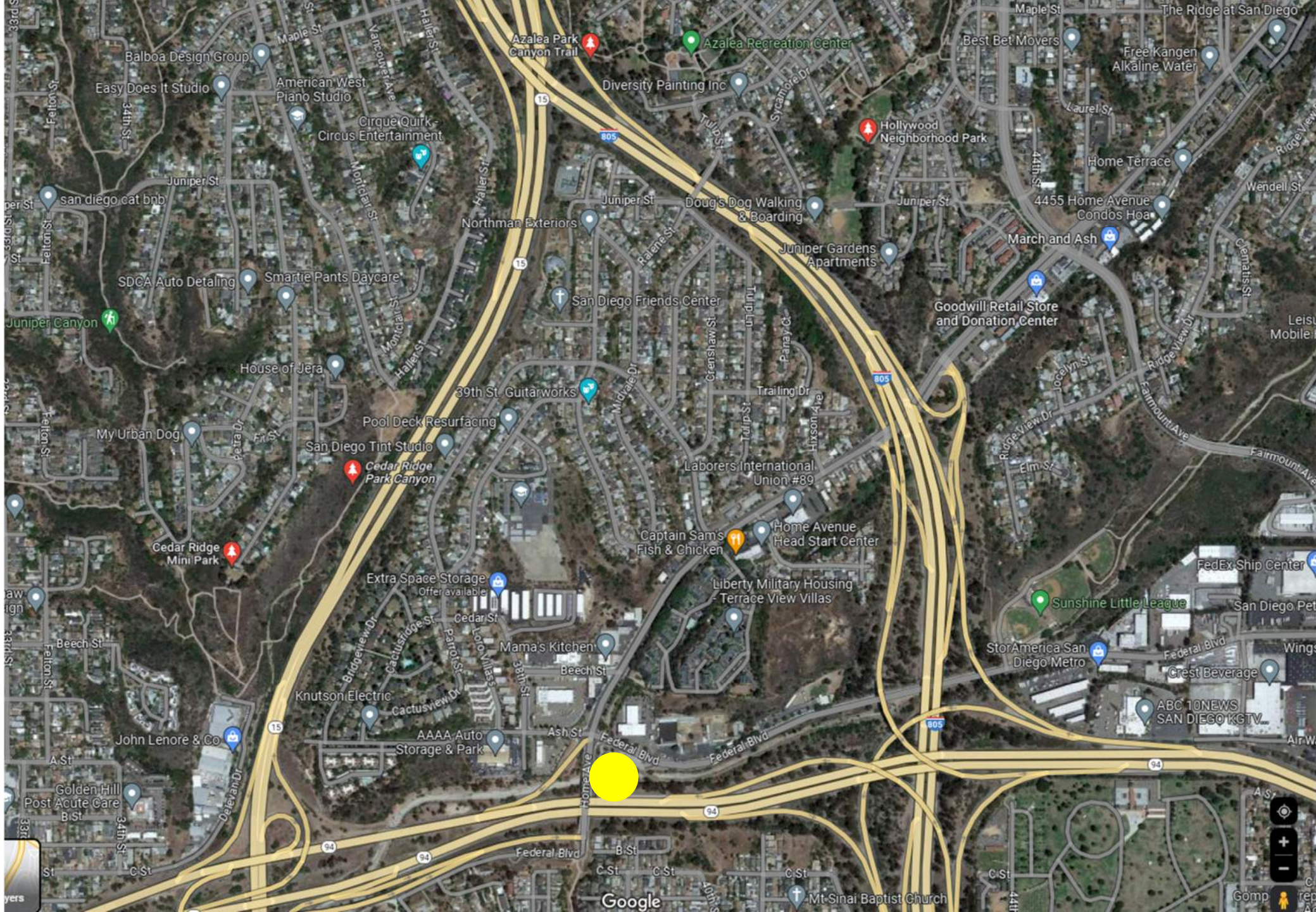
805

15

805

805

9



Google

Gomp

rep

Ag



Chollas Creek Watershed Water Quality and Habitat Improvement Project

Funded by two grants totaling \$6.5M focused on bringing multiple benefits to underserved communities

Benefits include:

- Flood protection
- Improved water quality
- Recreational opportunities (trail)
- Carbon capture (tree planting)
- Neighborhood beautification
- Reduce homeless encampments

Chollas Creek Watershed Water Quality and Habitat Improvement Project



Chollas Creek Watershed Water Quality and Habitat Improvement Project



100-year Flood Existing Condition

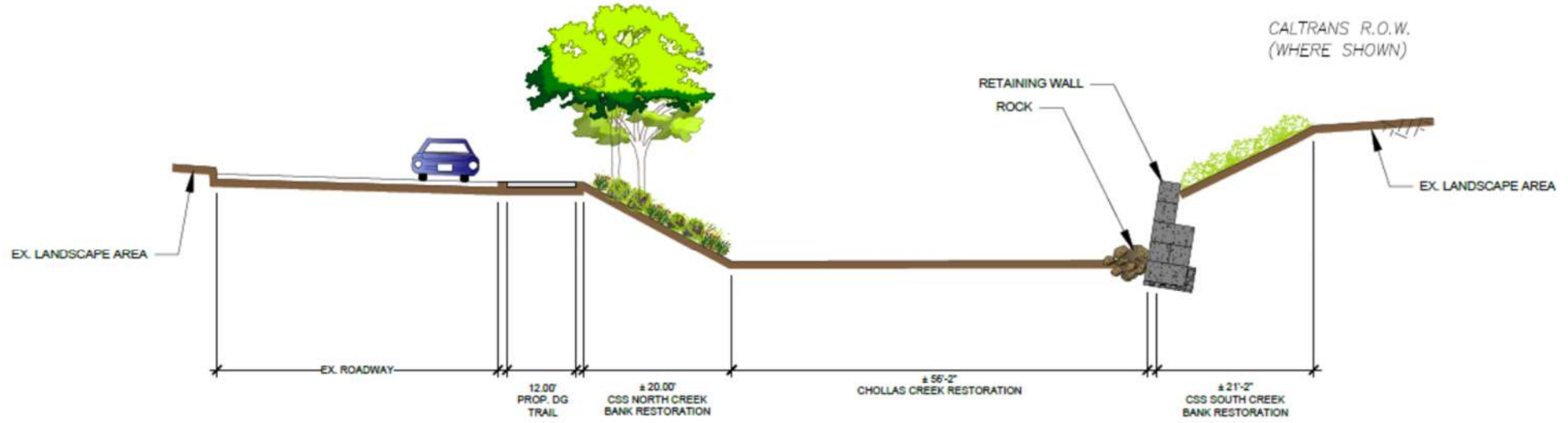
Google Earth





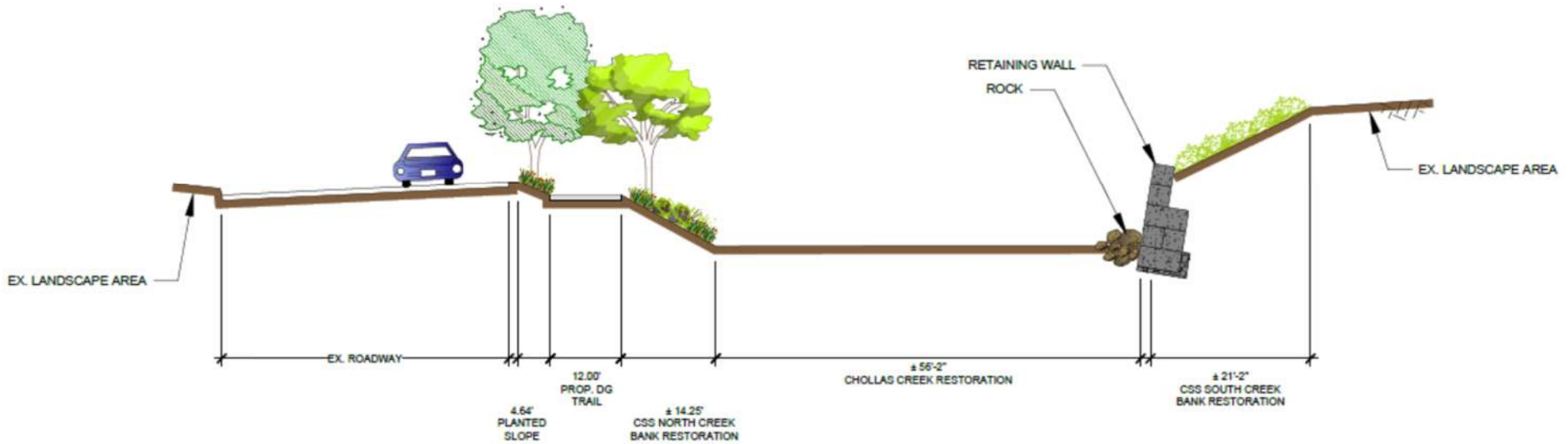
100-year Flood with Project

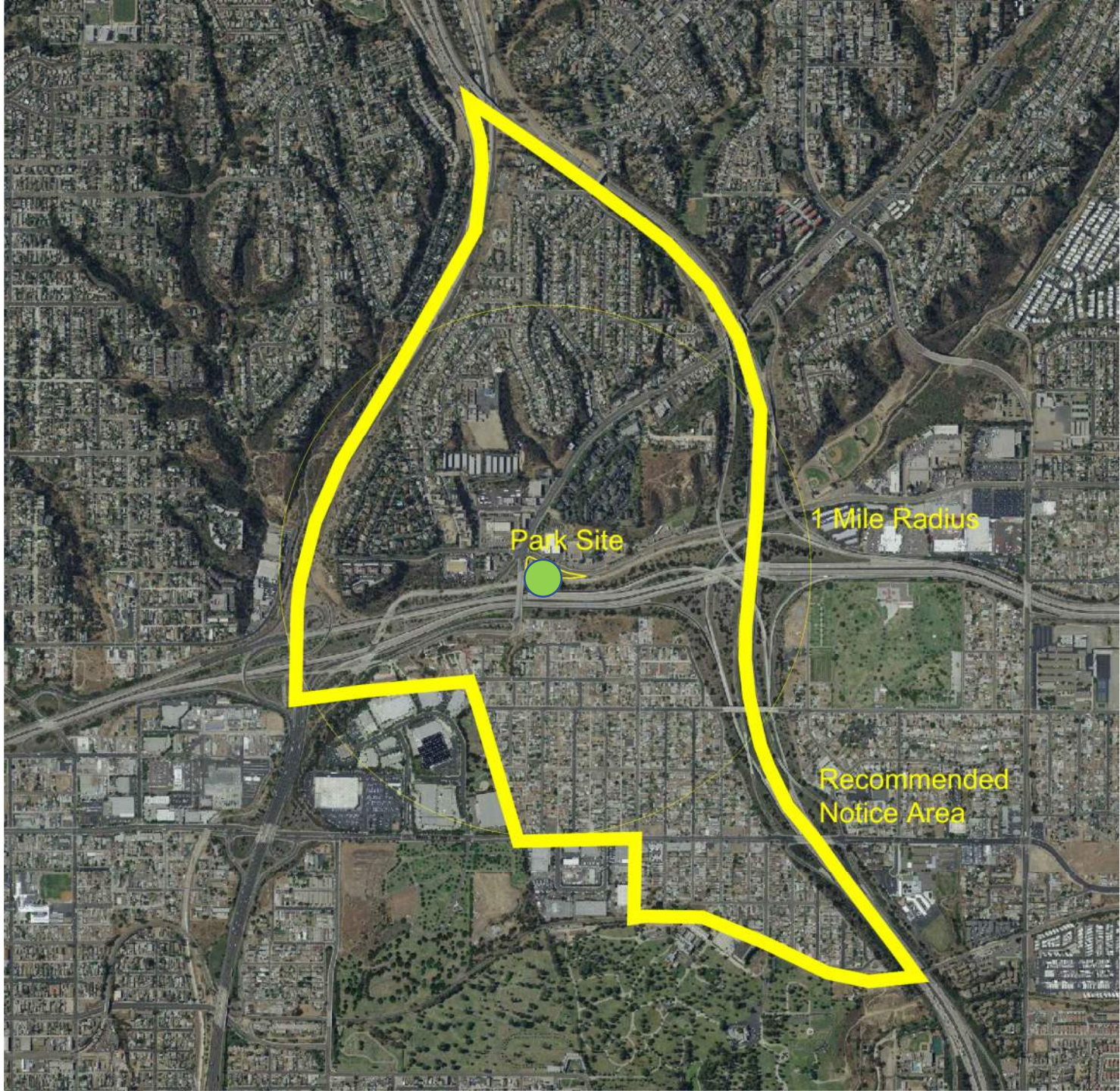
Google Earth



A SECTION @ STA. 38+50

SCALE: 1" = 10'-0"

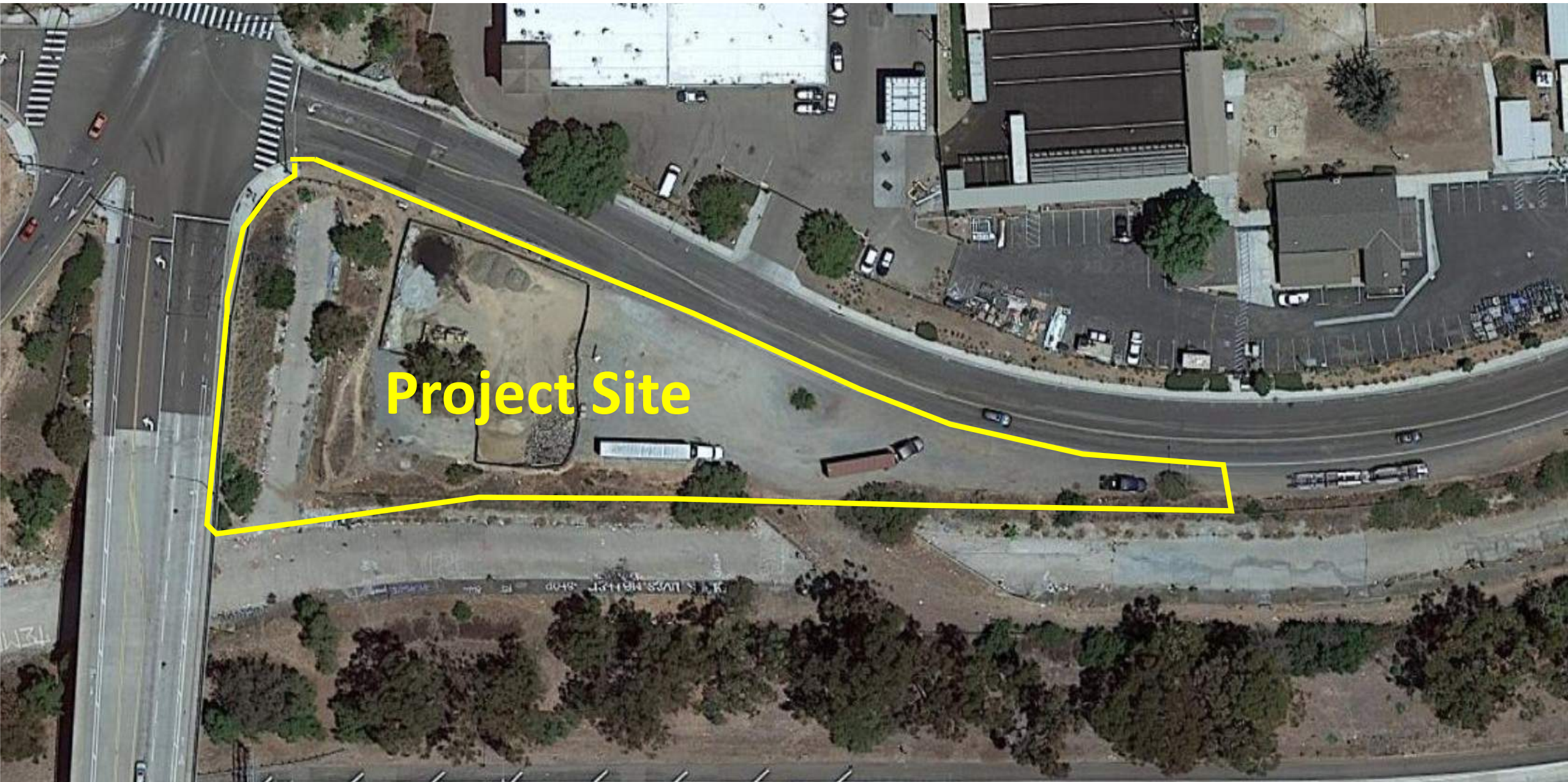




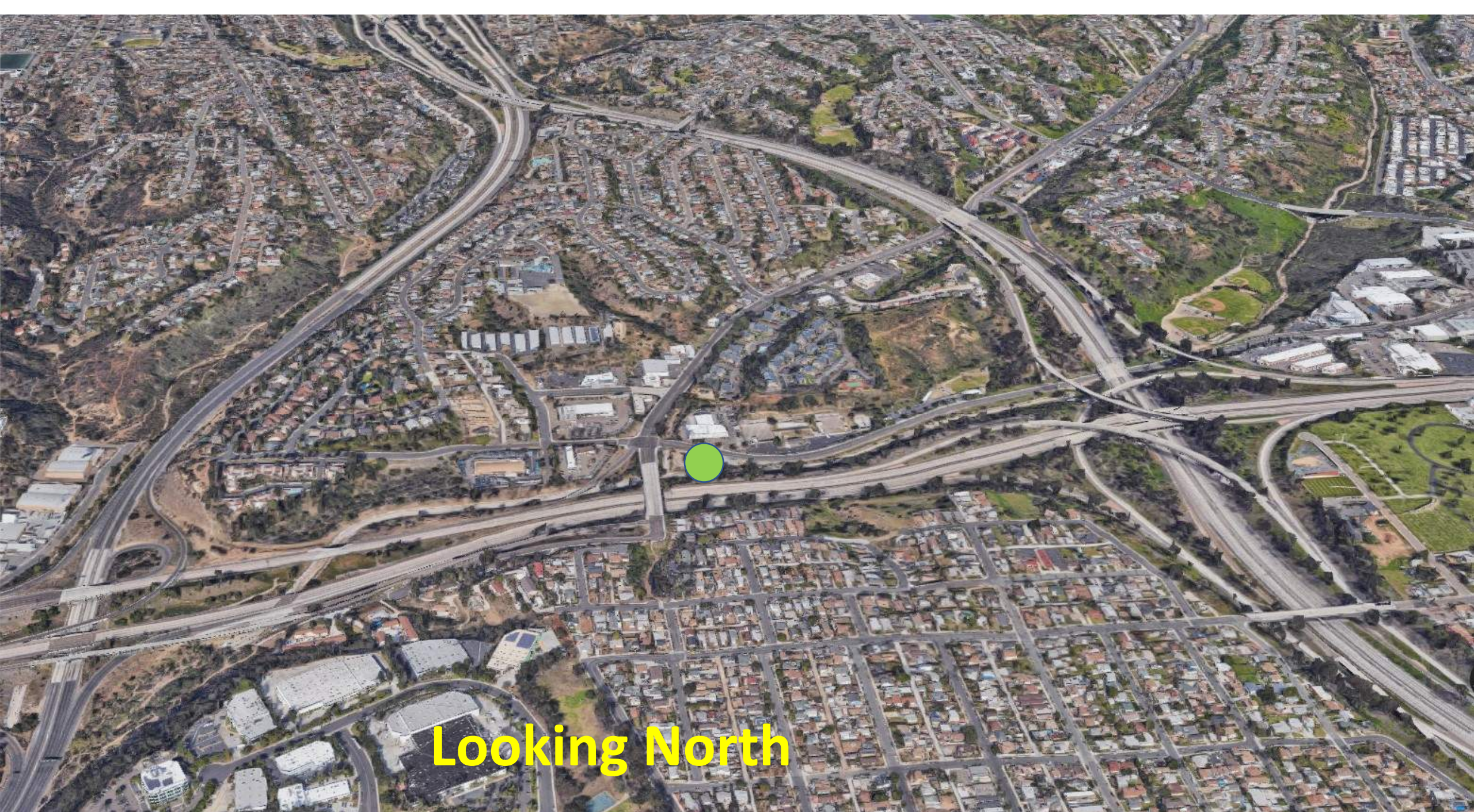
Park Site

1 Mile Radius

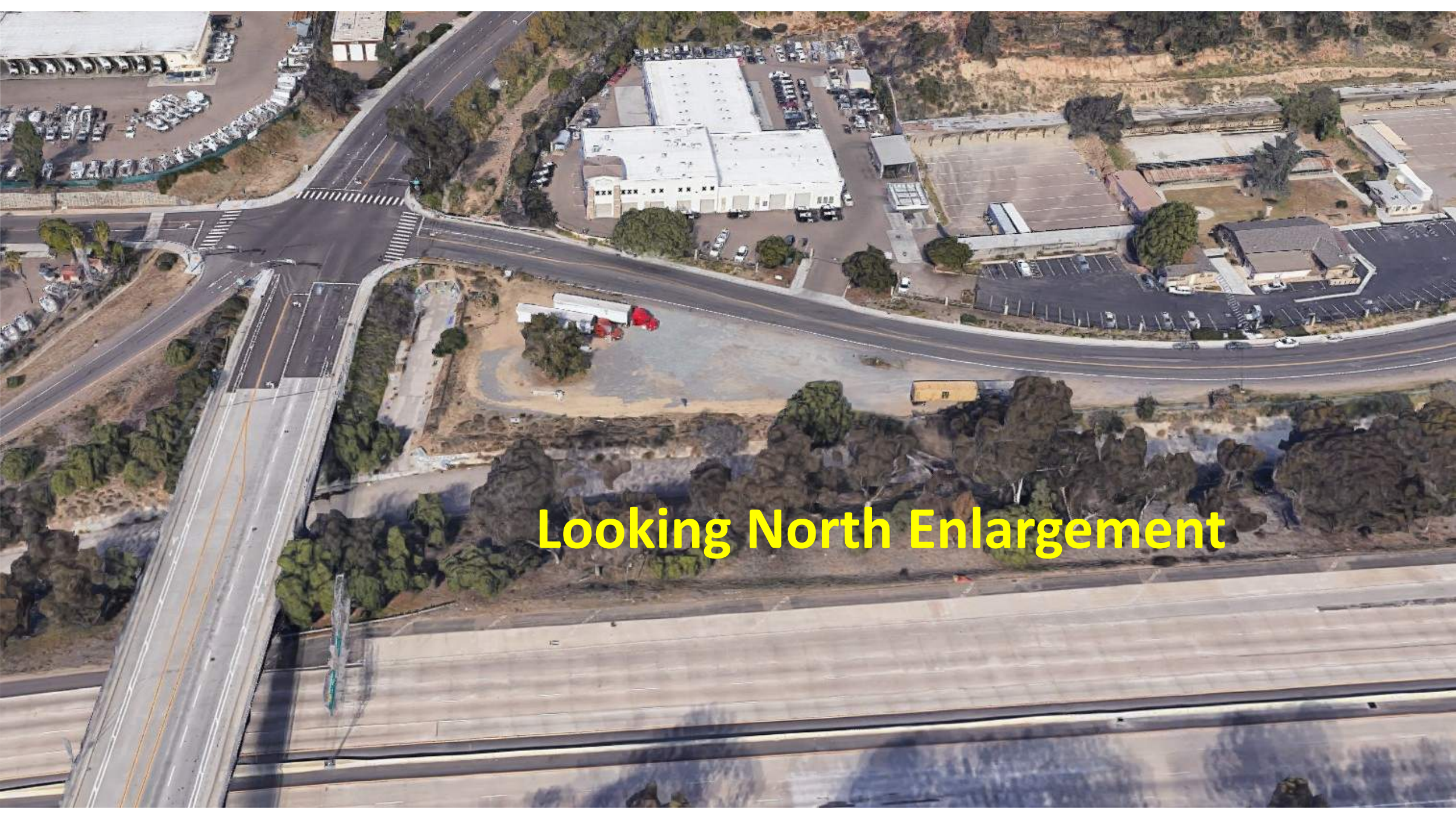
Recommended
Notice Area



Project Site



Looking North



Looking North Enlargement



Existing Photo



Existing Photos of Channel

Community Input



CHOLLAS CREEK COALITION

Parks, Trails, and Climate Justice in Our Watershed Communities

Members Affiliated With:

- Bayview Community Development Corporation • Bike San Diego • Chollas Valley Planning Group • City Heights Area Planning Group • City Heights Community Development Corporation
- City of San Diego Parks and Recreation Board • Climate Action Campaign • Eastern Area Planning Group • Emerald Hills Neighborhood Council • Environmental Health Coalition
- Groundwork San Diego • Oak Park Community Council • Outdoor Outreach • San Diego Canyonlands • San Diego Coastkeeper • San Diego County Bicycle Coalition • Sierra Club
- Southeastern San Diego Planning Group • Webster Community Council

Leslie Reynolds (Groundwork)

Sally Smull (Chollas Valley Planning Group),

Emerald Hills Neighborhood Council, Encanto Rec Group)

Diane Armenta (Southcrest community organizer,

Southeastern San Diego Planning Group)

Richard Diaz (Oak Park Community Council, Eastern Area
Planning)

Lynn Edwards (Eastern Area Planning Group)

Nicole Burgess (Quality of Life Coalition)

Martha Zapata D9

Bettina Rausa (Redwood Village Neighborhood Council)

Patrice Baker, Ramon Uribe, Brian Midkiff (Groundwork)

Evelyn Smith (City Parks and Rec Board, Emerald Hills

Neighborhood Council, Encanto Rec Group))

Rachel Powers (Mt. Hope)

Daniele Laham (Colina Del Sol Rec Group, City Parks and Rec Board)

Terry Hoskins (Redwood Village)

Kristen Hurst (Eastern Area Planning Group; Webster Community Council)

David Grubb (30x30)

Clayton Tschudy, (SD Canyonlands)

Lucero Sanchez, (SD Coastkeeper)

Julie Corrales, Kyle Heiskala, (Environmental Health Coalition)

Elida Chavez (Oak Park Community Council)

Madison Coleman (Climate Action Campaign)

Lizzie Rodriguez D8

Jose Reynoso (College Area Planning Group)

Jesse Ramirez (City Heights CDC)

Sonia Diaz, (Outdoor Outreach)

Roxana Mejia (Mt.Hope)

Karen Montafur (D4)



Webster Residents Community Voice for Change

Help Us Plan a Pocket Park

AND

Evaluate the Walking/Biking Safety to Berardini Field

Webster Elementary
4801 Elm St, San Diego

September 17, 2022
9:00am - 11:00am



Park Planning Activities New Pocket Park Federal Blvd. and Home Ave.

This new pocket park project will be located on the corner of Federal Blvd. and Home Ave. The park is part of a larger project on Federal Blvd, starting at Berardini Field which will help our community adapt to climate change by restoring this segment of the Creek to a more natural condition to control flooding, and create a trail for biking and walking that is lined with native trees and plants.

Groundwork has received funds from the **Bezos Earth Fund** and City approvals to start construction in a few months.

Walk Audit Activities Webster Elementary to Berardini Field

We invite Webster neighbors that will use this new Pocket Park to join us in a community walk to Berardini Field. You can share ideas on what is needed for safe walking and biking to the new park.



Additional Park Planning Activities Start October 8th

Would like to be included in the upcoming Pocket Park design activities?

Call or email: **Enrique De La Cruz**

Enrique De La Cruz
Groundwork San Diego-Chollas Creek
5106 Federal Blvd #203
San Diego Ca 92105

Enrique@groundworksandiego.org

www.groundworksandiego.org
619 543 0430





New Federal Blvd Pocket Park Survey

Activities

What activities would you like to see included at the new Federal Blvd Pocket Park?
Circle the number that describes your preference (1= less desirable, 5=most desirable)

- 1 2 3 4 5 Public art project - integrated into park paving, walls, etc.
- 1 2 3 4 5 Seating areas with benches along a paved path
- 1 2 3 4 5 Picnic tables
- 1 2 3 4 5 Game table
- 1 2 3 4 5 Barbeques
- 1 2 3 4 5 Bike racks
- 1 2 3 4 5 Shade structure/trellis
- 1 2 3 4 5 Small group picnic/barbeque areas integrated with trees
- 1 2 3 4 5 Shade trees
- 1 2 3 4 5 Trash receptacles

Are there activities not listed above that you would like to see? Please list.

Safety: What elements do you think would provide park safety?

Other Ideas and Comments:

Help us keep you informed of Park Progress:

Name: _____ Phone: _____

(Optional)
Address: _____ Email: _____

Survey Information will be sent to City of San Diego Parks and Recreation Director
[Groundwork San Diego - Chollas Creek Contact](#)
Patrice Baker, Community Outreach Director
(619) 543-0430 Email: patrice@groundworksandiego.org



Encuesta sobre el mejoramiento del Parque Gompers

Actividades y Instalaciones

¿Qué mejoramientos/instalaciones le gustaría ver en el parque Gompers?
Circule el número que describa sus preferencias (5=mas deseable, 1 menos deseable)

- 1 2 3 4 5 Proyecto de arte público - integrado al pavimento o en las paredes
- 1 2 3 4 5 Áreas para sentarse con bancas con with caminos pavimentados
- 1 2 3 4 5 Más mesas de picnic
- 1 2 3 4 5 Mesas de juego
- 1 2 3 4 5 Parrillas de barbaquea
- 1 2 3 4 5 Aparcabicicletas
- 1 2 3 4 5 Estructura de sombra/enrejado
- 1 2 3 4 5 Areas para grupos pequeños con parrillas integradas con árboles y césped
- 1 2 3 4 5 Árboles de sombra
- 1 2 3 4 5 Contenedores de basura

Por favor, enumere las actividades no enumeradas anteriormente que le gustaría ver.

Seguridad: ¿Qué elementos crees que proporcionarían seguridad al parque?

Otras ideas y comentarios: _____

Ayúdanos a mantenerte informado sobre el progreso del parque:

Nombre: _____ Teléfono: _____

(Opcional)
Dirección: _____ Email: _____

La información de las encuestas sera compartida con el departamento del Parques y Recreación de la ciudad de San Diego
[Groundwork San Diego - Chollas Creek - Contacto](#)
Patrice Baker, Directora de Alcance Comunitario
(619) 543-0430 Email: patrice@groundworksandiego.org

9/17/22 Erika C.

Bezos Pocket Park Community Survey

Activities and Facilities

What activities would you like to see included at the new pocket park (on Federal Blvd and Home Ave)?

Circle the number that describes your preference (1= less desirable, 5=most desirable)

- 1 2 3 4 5 Playground facilities for small children (2-5 year olds)
- 1 2 3 4 Playground facilities for older children (6-12 year olds)
- 1 2 4 5 Public art project - integrated into park paving, walls, etc.
- 1 2 3 4 5 Seating areas with benches along a paved path
- 1 2 3 5 Picnic tables
- 1 2 4 5 Game tables
- 1 2 3 4 5 Bike racks
- 1 2 4 5 Shade structure/trellis
- 1 2 3 4 5 Shade trees
- 1 2 3 4 5 Trash receptacles

Are there facilities not listed above that you would like to see? Please list.

Safety: How do you think we can improve safety when using the park?

Safety is an important component

Other Ideas and Comments:

Survey information will be sent to City of San Diego Parks and Recreation Director

Groundwork San Diego - Chelsea Creek Station
Patrice Baker, Community Outreach Director
(619) 543-0430 Email: patrice@groundworksandiego.org

Daniela L.

Dottie P.

Bezos Pocket Park Community Survey

Activities and Facilities

What activities would you like to see included at the new pocket park (on Federal Blvd and Home Ave)?

Circle the number that describes your preference (1= less desirable, 5=most desirable)

- 1 2 4 5 Playground facilities for small children (2-5 year olds)
- 1 2 4 5 Playground facilities for older children (6-12 year olds)
- 1 2 3 4 5 Public art project - integrated into park paving, walls, etc.
- 1 2 3 4 5 Seating areas with benches along a paved path
- 1 2 3 4 5 Picnic tables
- 1 2 4 5 Game tables
- 1 2 3 4 5 Bike racks
- 1 2 3 4 5 Shade structure/trellis
- 1 2 3 4 5 Shade trees
- 1 2 3 4 5 Trash receptacles

Are there facilities not listed above that you would like to see? Please list.

Safety: How do you think we can improve safety when using the park?

Other Ideas and Comments:

Survey information will be sent to City of San Diego Parks and Recreation Director

Groundwork San Diego - Chelsea Creek Station
Patrice Baker, Community Outreach Director
(619) 543-0430 Email: patrice@groundworksandiego.org

Amy W.

Anne L.

Bezos Pocket Park Community Survey

Activities and Facilities

What activities would you like to see included at the new pocket park (on Federal Blvd and Home Ave)?

Circle the number that describes your preference (1= less desirable, 5=most desirable)

- 1 2 4 5 Playground facilities for small children (2-5 year olds)
- 1 2 4 5 Playground facilities for older children (6-12 year olds)
- 1 2 3 4 5 Public art project - integrated into park paving, walls, etc.
- 1 2 3 4 5 Seating areas with benches along a paved path
- 1 2 3 4 5 Picnic tables
- 1 2 3 4 5 Game tables
- 1 2 3 4 5 Bike racks
- 1 2 3 4 5 Shade structure/trellis
- 1 2 3 4 5 Shade trees
- 1 2 3 4 5 Trash receptacles

Are there facilities not listed above that you would like to see? Please list.

Safety: How do you think we can improve safety when using the park?

Other Ideas and Comments:

Survey information will be sent to City of San Diego Parks and Recreation Director

Groundwork San Diego - Chelsea Creek Station
Patrice Baker, Community Outreach Director
(619) 543-0430 Email: patrice@groundworksandiego.org

Michelle W.

Bezos Pocket Park Community Survey

Activities and Facilities

What activities would you like to see included at the new pocket park (on Federal Blvd and Home Ave)?

Circle the number that describes your preference (1= less desirable, 5=most desirable)

- 1 2 4 5 Playground facilities for small children (2-5 year olds)
- 1 2 4 5 Playground facilities for older children (6-12 year olds)
- 1 2 3 4 5 Public art project - integrated into park paving, walls, etc.
- 1 2 3 4 5 Seating areas with benches along a paved path
- 1 2 3 4 5 Picnic tables
- 1 2 3 4 5 Game tables
- 1 2 3 4 5 Bike racks
- 1 2 3 4 5 Shade structure/trellis
- 1 2 3 4 5 Shade trees
- 1 2 3 4 5 Trash receptacles

Are there facilities not listed above that you would like to see? Please list.

Safety: How do you think we can improve safety when using the park?

Other Ideas and Comments:

Survey information will be sent to City of San Diego Parks and Recreation Director

Groundwork San Diego - Chelsea Creek Station
Patrice Baker, Community Outreach Director
(619) 543-0430 Email: patrice@groundworksandiego.org

Bezos Pocket Park Community Survey

Activities and Facilities

What activities would you like to see included at the new pocket park (on Federal Blvd and Home Ave)?

Circle the number that describes your preference (1= less desirable, 5=most desirable)

- 1 2 3 4 5 Playground facilities for small children (2-5 year olds)
- 1 2 3 4 5 Playground facilities for older children (6-12 year olds)
- 1 2 3 4 5 Public art project - integrated into park paving, walls, etc.
- 1 2 3 4 5 Seating areas with benches along a paved path
- 1 2 3 4 5 Picnic tables
- 1 2 3 4 5 Game tables
- 1 2 3 4 5 Bike racks
- 1 2 3 4 5 Shade structure/trellis
- 1 2 3 4 5 Shade trees
- 1 2 3 4 5 Trash receptacles

Are there facilities not listed above that you would like to see? Please list.

Safety: How do you think we can improve safety when using the park?

Other Ideas and Comments:

Survey information will be sent to City of San Diego Parks and Recreation Director

Groundwork San Diego - Chelsea Creek Station
Patrice Baker, Community Outreach Director
(619) 543-0430 Email: patrice@groundworksandiego.org

Bezos Pocket Park Community Survey

Activities and Facilities

What activities would you like to see included at the new pocket park (on Federal Blvd and Home Ave)?

Circle the number that describes your preference (1= less desirable, 5=most desirable)

- 1 2 3 4 5 Playground facilities for small children (2-5 year olds)
- 1 2 3 4 5 Playground facilities for older children (6-12 year olds)
- 1 2 3 4 5 Public art project - integrated into park paving, walls, etc.
- 1 2 3 4 5 Seating areas with benches along a paved path
- 1 2 3 4 5 Picnic tables
- 1 2 3 4 5 Game tables
- 1 2 3 4 5 Bike racks
- 1 2 3 4 5 Shade structure/trellis
- 1 2 3 4 5 Shade trees
- 1 2 3 4 5 Trash receptacles

Are there facilities not listed above that you would like to see? Please list.

Safety: How do you think we can improve safety when using the park?

Other Ideas and Comments:

Survey information will be sent to City of San Diego Parks and Recreation Director

Groundwork San Diego - Chelsea Creek Station
Patrice Baker, Community Outreach Director
(619) 543-0430 Email: patrice@groundworksandiego.org

Green team hosts students at park site



Meeting With Community



- Pocket Park = Small Parks - Log/Docu in Drive
- Don't have to drive to
 - a variety of things to do
 - Basketball / Basics (slides)
 - Safe neighborhood
 - places for parents to sit
 - Shade
 - focal point in neighborhood
 - exercise stations
 - small restroom
 - Clean / maintenance - safety
 - ★ • Dog Park (leash-free)
 - surfaces that drain
 - native plants
 - Swings
 - ★ • Protective barrier
 - Pathways to Pocket Park / Crossing Federal
 - Low risk - park
 - Unique features
 - Kumer / way history
 - Acronyms - plaque
 - Native theme ~~to~~ - climbing ¹³¹³ rocks
 - Kingdom theme
 - Incorporate public art to deter graffiti
 - Water fountain

MERLIN'S CASTLE



A PIRATES LIFE

Themes Presented at Community Meeting

DISTANT FUTURE



Nature Theme





SAIL BOAT THEME

SAND DUNE THEME

**Themes Presented at
Community Meeting**



Treasure Island Theme



LOST ISLAND



AIRCRAFT THEME



Bug Kingdom Theme

**Themes Presented at
Community Meeting**



BAYOU/LAGOON THEME



Man On The Moon Theme



Nature Play Theme

Concept

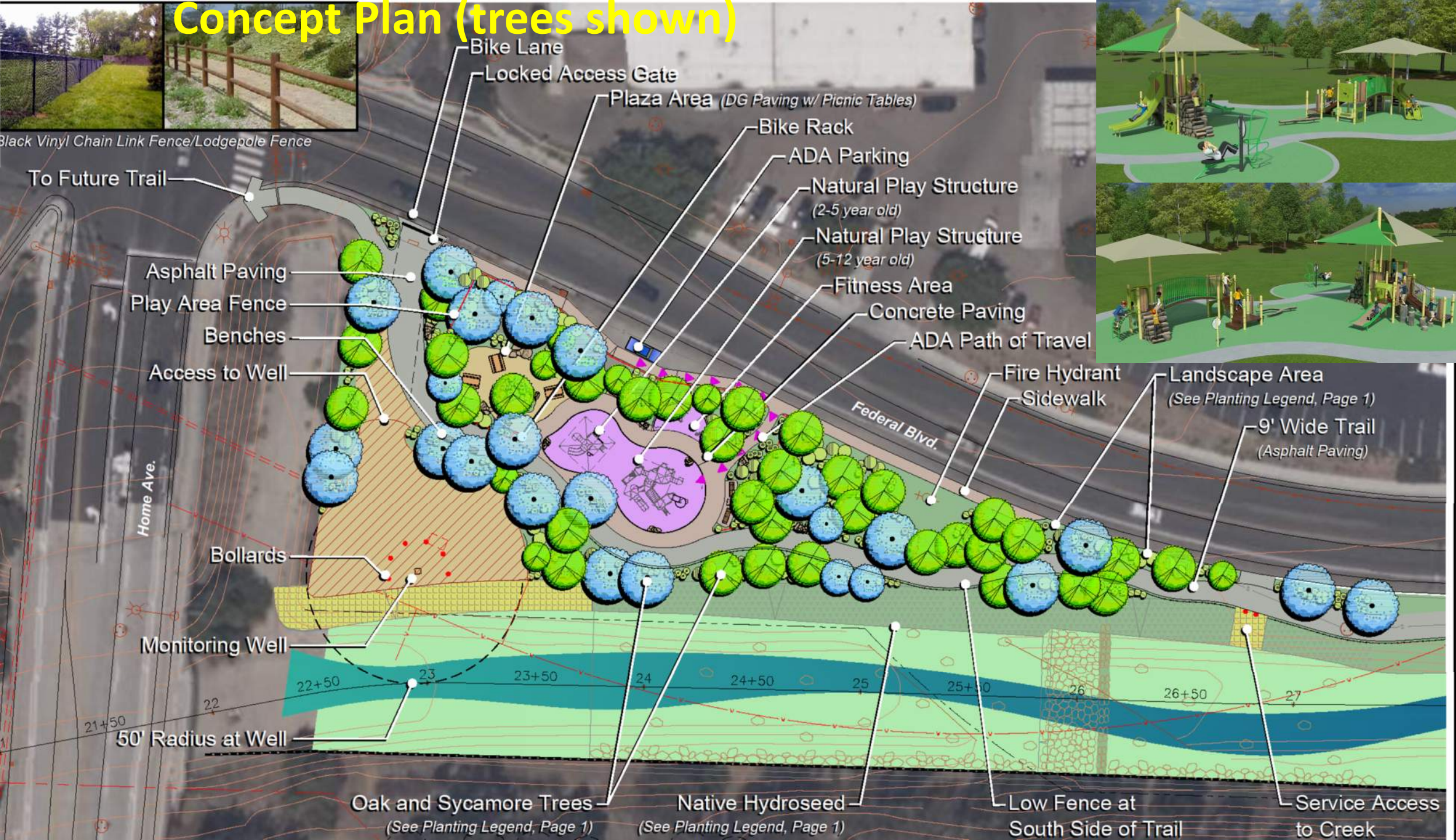
Groundwork San Diego has been working with the communities of Oak Park and Webster The Federal Blvd. Climate Action Mini-Park addresses City Climate Mitigation and Climate Adaptation goals:

- Mitigation
- Green House Gas Reduction #Trees
- Heat Island Reduction Impervious Road Surface Replacement
- Active Transportation Trailhead Linkage
- Adaptation
- Flood Risk Elimination Roadway Grading
- Green Infrastructure Bioswales
- Air Quality Improvement Tree Canopy; Native Landscape

Climate change mitigation aims to reduce greenhouse gas emissions, slow down global warming, and avoid the worst potential impacts of climate change. This is the major goal of the City's Climate Action Plan.

The objective of climate change adaptation, on the other hand, is to reduce impacts from climate change-related hazards. Climate Resilient SD is the City's comprehensive adaptation and resilience plan that focuses on increasing local capacity to adapt, recover and thrive in changing climate.

Concept Plan (trees shown)



Concept Plan (no trees shown)



Black Vinyl Chain Link Fence/Lodgepole Fence



Natural Play Structure Examples



To Future Trail

Asphalt Paving
Play Area Fence
Benches
Access to Well

Home Ave.

Bollards
Monitoring Well

50' Radius at Well

Oak and Sycamore Trees
(See Planting Legend, Page 1)

Native Hydroseed
(See Planting Legend, Page 1)

Low Fence at
South Side of Trail

Service Access
to Creek

Bike Lane

Locked Access Gate

Plaza Area (DG Paving w/ Picnic Tables)

Bike Rack

ADA Parking

Natural Play Structure
(2-5 year old)

Natural Play Structure
(5-12 year old)

Fitness Area

Concrete Paving

ADA Path of Travel

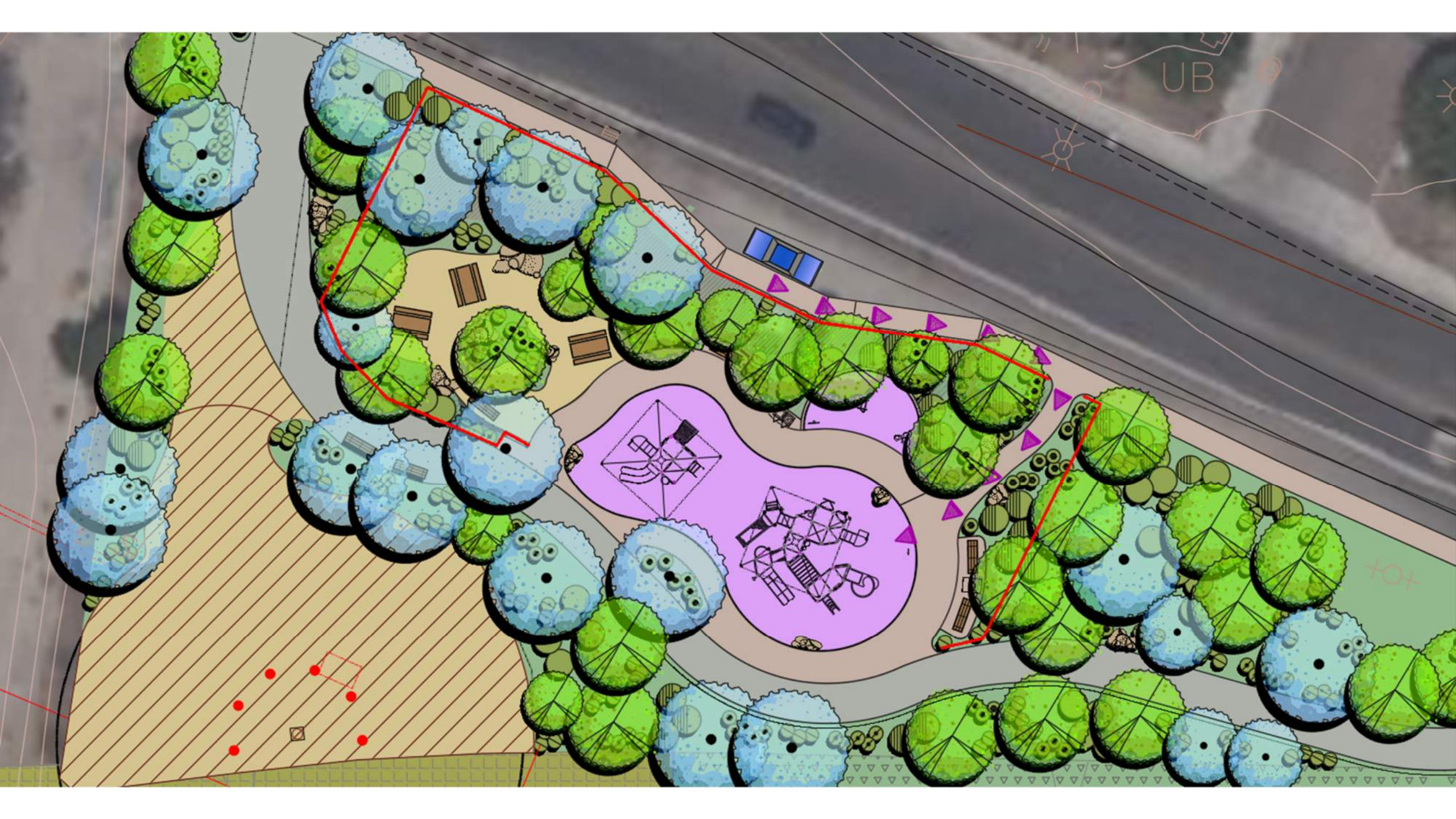
Fire Hydrant
Sidewalk

Landscape Area
(See Planting Legend, Page 1)

9' Wide Trail
(Asphalt Paving)

Federal Blvd.



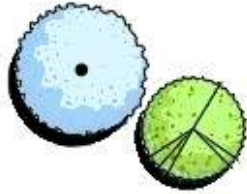










Planting Legend



Trees

<i>Platanus racemosa</i>	California Sycamore	15 Gal
<i>Quercus agrifolia</i>	Coast Live Oak	15 Gal

Shrubs

 <i>Artemesia californica</i>	Coastal Sage Brush	1 Gal
 <i>Elymus condensatus</i>	Giant Wild Rye	1 Gal
 <i>Salvia apiana</i>	White Sage	1 Gal
 <i>Salvia mellifera</i>	Black Sage	1 Gal
 <i>Stipa pulchra</i>	Purple Needlegrass	1 Gal

Accent Shrubs

 <i>Diplacus aurantiacus</i>	Sticky Monkey Flower	1 Gal
 <i>Oenothera eleta ssp hookeri</i>	Evening Primrose	1 Gal

Native Hydroseed



<i>Acmispon glaber</i>	Deerweed
<i>Artemesia californica</i>	California Sagebrush
<i>Deinandra fasciculata</i>	Fascicled Tarweed
<i>Encelia californica</i>	California Encelia
<i>Eriogonum fasciculatum</i>	California Buckwheat
<i>Eriophyllum confertiflorum</i>	Long-stem Golden Yarrow
<i>Eschscholzia californica</i>	California Poppy
<i>Locoma menziesii</i>	Coastal Goldenbush
<i>Lasthenia californica</i>	Goldfields
<i>Lupinus bicolor</i>	Miniature Lupine
<i>Melica imperfecta</i>	Small-Flowered Melic Grass
<i>Sisyrinchium bellum</i>	Blue-Eyed Grass
<i>Salvia apiana</i>	White Sage
<i>Salvia mellifera</i>	Black Sage
<i>Stipa pulchra</i>	Purple Needlegrass
<i>Plantago insularis (ovata-indica)</i>	Plantain
<i>Vulpia microstachys</i>	Small Fescue



Federal Triangle Park

1172286-01-01-01 • 02.15.2023





Federal Triangle Park

1172286-01-01-02 • 02.15.2023



CURRENT

No. 1001
(Revised 9/21/2020)

PARK AND RECREATION BOARD POLICY No. 1001

SUBJECT: Naming of Parks and Park Facilities

DEFINITIONS: Park or Park Facility – Any part of real property or structure owned by the City, including but not limited to, park, recreation building, parking facility, interior or ancillary feature that is part of or within a larger facility such as aquatic facility or feature, amphitheater, ball field, boat ramp, camping area, club house, comfort station, disc golf course, dog off leash area, fishing pier, gymnasium, horse corral, kitchen, meeting room, natural feature, nature center, outdoor athletic court, park road, picnic shelter, playground, pump track, ranger station, scoreboard, senior center, skate park, tot lot, and weight/fitness room.

Advisory Group – Any park advisory body established by San Diego Council Policy 700-42, including Community Recreation Advisory Groups (CRG's)). For certain parks as established in San Diego Municipal Code, the Advisory Group may be the Balboa Park Committee, Mission Bay Park Committee, Municipal Golf Committee, or an advisory group approved under a Joint Exercise of Powers Agreement.

Advocate – Individual or group of people who are leading the effort to name or rename a Park or Park Facility.

Written Package – Collection of materials that includes the proposed name and justification for a new name that is consistent with this Policy and San Diego Council Policy 900-20, any funding associated with the name change, and any other documentation as further set forth in this Policy.

BACKGROUND: The public occasionally suggests that a Parks or Park Facility be named or re-named in honor of persons living or deceased.

This Park and Recreation Board Policy was developed in conjunction with Council Policy 900-20 "Naming of City Assets" for naming of a Park or Park Facility.

Park Name Ideas?

Federal Blvd. Pocket Park

Proposed General Development Plan

Colina del Sol Community
Recreation Group

Questions?

May 31, 2023