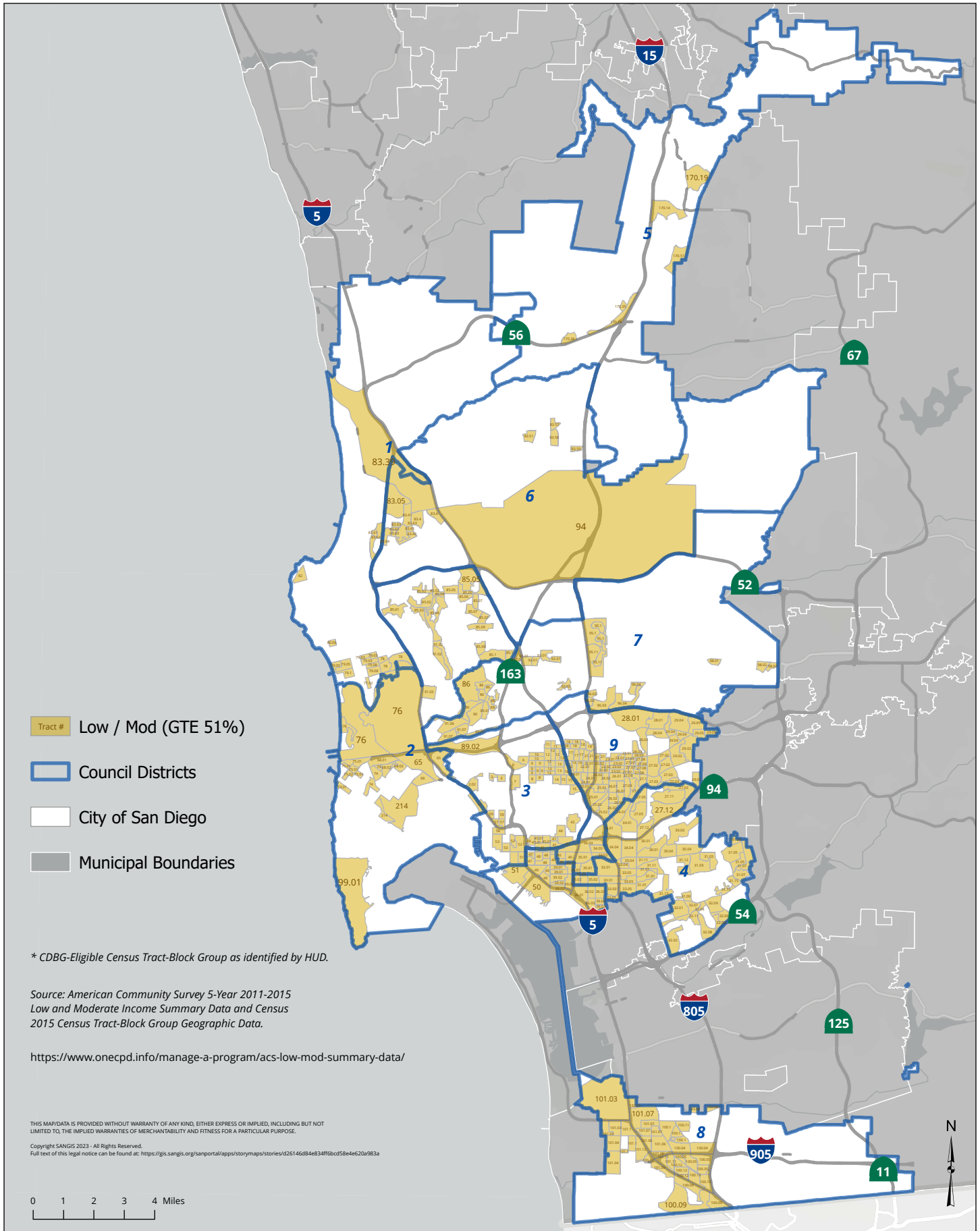




# City of San Diego: Community Development Block Grant

HUD Low and Moderate Income Census Block Groups (Household Income 80% or Below) \*

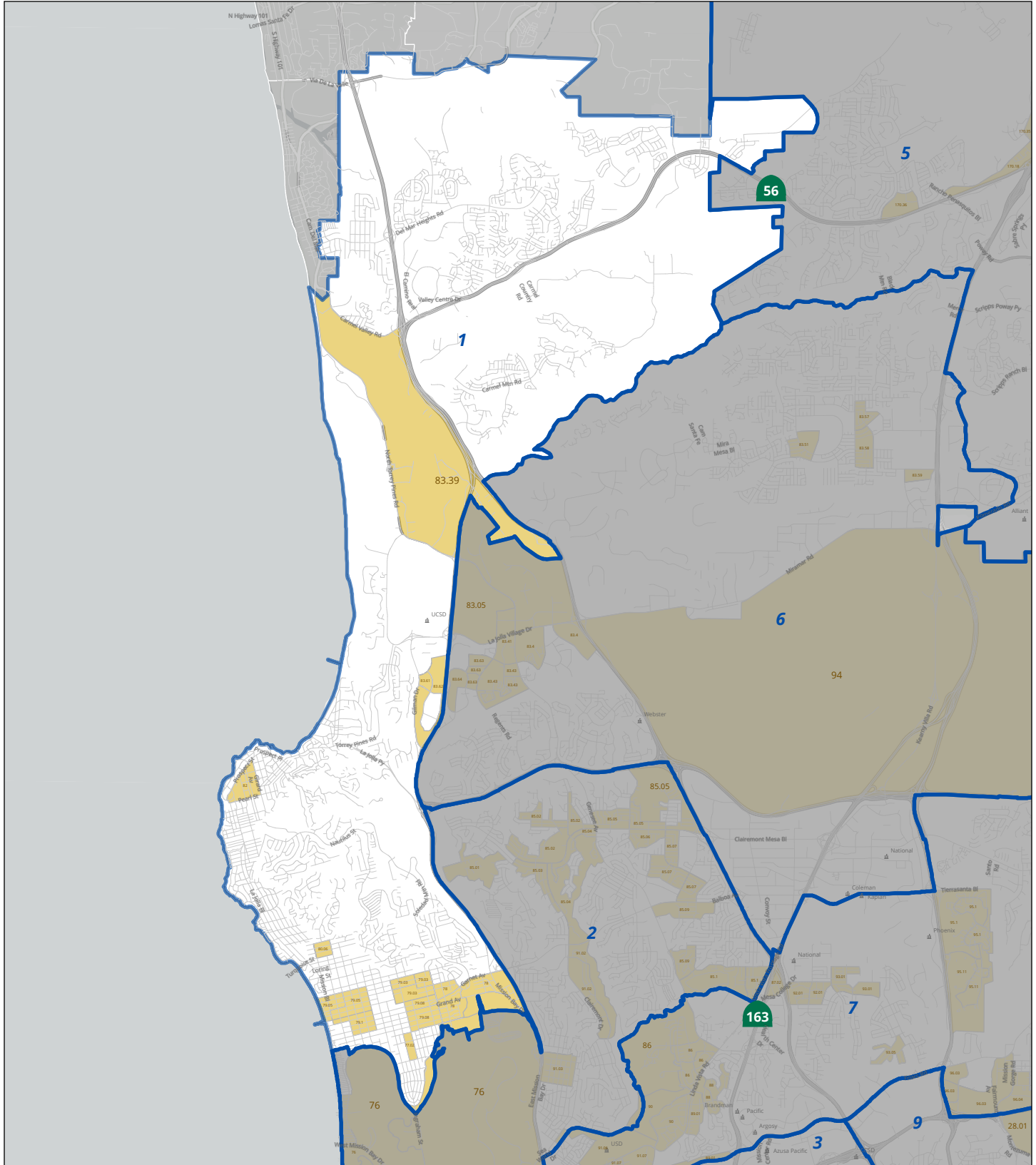
Date: April 2023





# City of San Diego: Community Development Block Grant **Council District: 1**

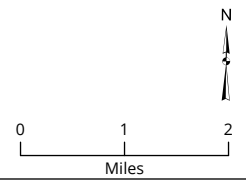
HUD Low and Moderate Income Census Block Groups (Household Income 80% or Below) \*



- Tract # Low / Mod (GTE 51%)
- City of San Diego
- Council Districts
- Municipal Boundaries

\* CDBG-Eligible Census Tract-Block Group as identified by HUD.

Source: American Community Survey 5-Year 2011-2015 Low and Moderate Income Summary Data and Census 2015 Census Tract-Block Group Geographic Data.

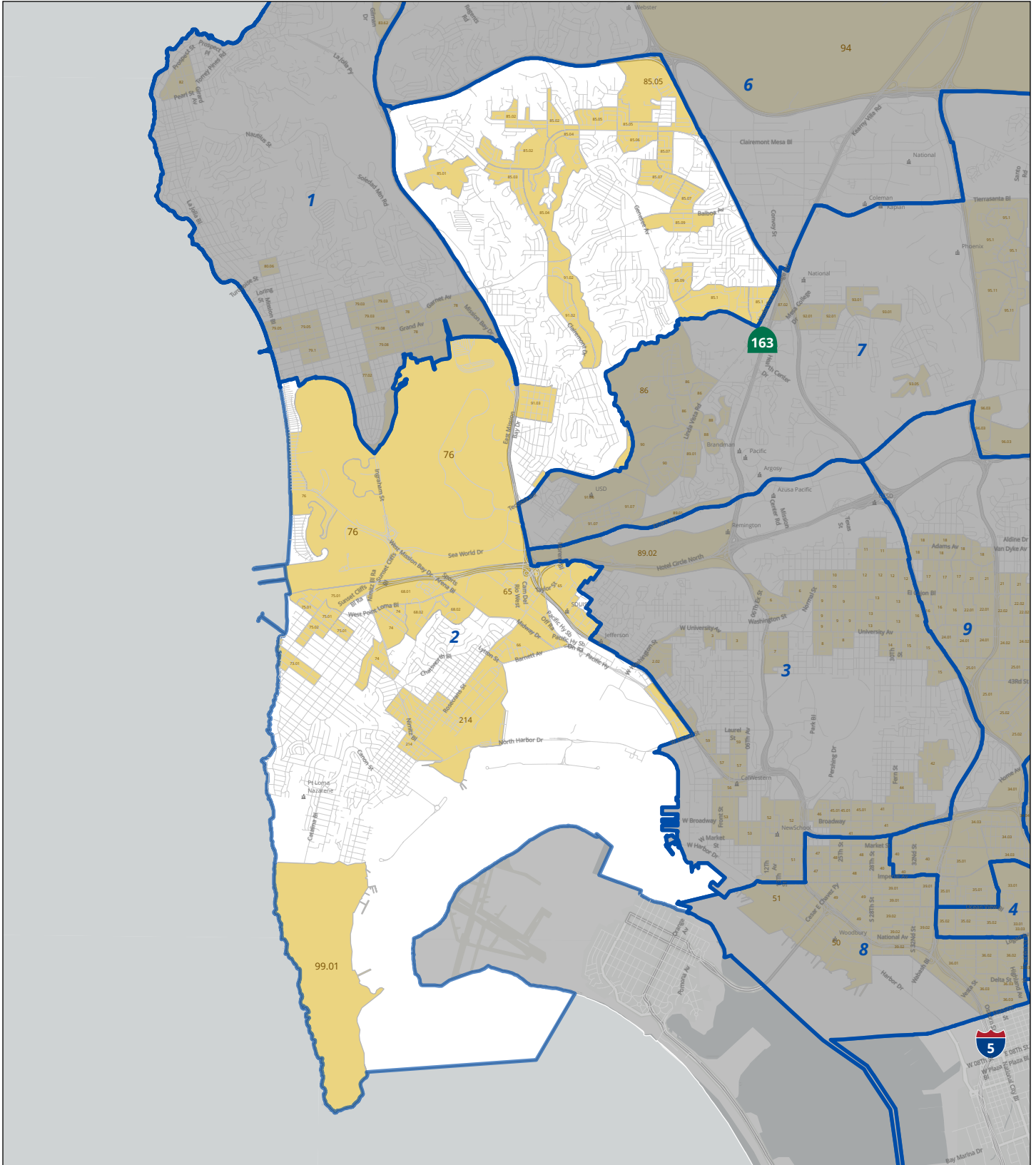


THIS MAP/DATA IS PROVIDED WITHOUT WARRANTY OF ANY KIND, EITHER EXPRESS OR IMPLIED, INCLUDING BUT NOT LIMITED TO, THE IMPLIED WARRANTIES OF MERCHANTABILITY AND FITNESS FOR A PARTICULAR PURPOSE.  
 Copyright SANGIS 2023 - All Rights Reserved.  
 Full text of this legal notice can be found at: <https://gis.sangis.org/sanportal/apps/storymaps/stories/d26146d84e34f6bcd584e620a983a>



# City of San Diego: Community Development Block Grant **Council District: 2**

HUD Low and Moderate Income Census Block Groups (Household Income 80% or Below) \*

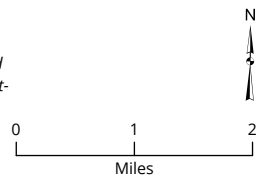


- Tract # Low / Mod (GTE 51%)
- City of San Diego
- Municipal Boundaries
- Council Districts

\* CDBG-Eligible Census Tract-Block Group as identified by HUD.

Source: American Community Survey 5-Year 2011-2015 Low and Moderate Income Summary Data and Census 2010 Census Tract-Block Group Geographic Data.

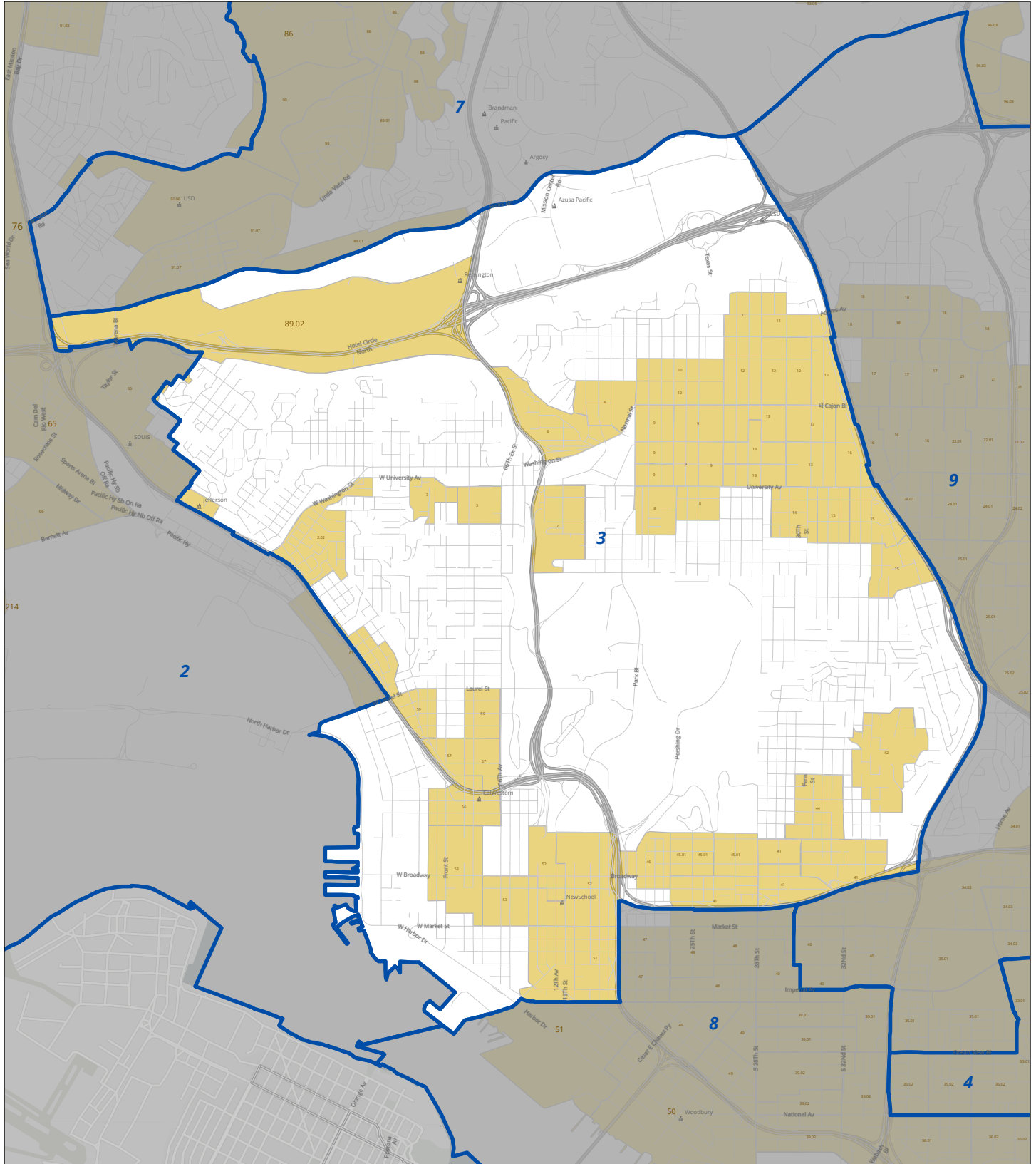
THIS MAP/DATA IS PROVIDED WITHOUT WARRANTY OF ANY KIND, EITHER EXPRESS OR IMPLIED, INCLUDING BUT NOT LIMITED TO, THE IMPLIED WARRANTIES OF MERCHANTABILITY AND FITNESS FOR A PARTICULAR PURPOSE.  
Copyright SANGIS 2023 - All Rights Reserved.  
Full text of this legal notice can be found at: <https://gis.sangis.org/sanportal/apps/storymaps/stories/d26146d84e34f6bcd58e4e20a983a>





# City of San Diego: Community Development Block Grant **Council District: 3**

HUD Low and Moderate Income Census Block Groups (Household Income 80% or Below) \*

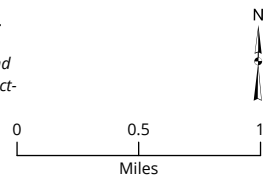


- Tract # Low / Mod (GTE 51%)
- City of San Diego
- Municipal Boundaries
- Council Districts

\* CDBG-Eligible Census Tract-Block Group as identified by HUD.

Source: American Community Survey 5-Year 2011-2015 Low and Moderate Income Summary Data and Census 2010 Census Tract-Block Group Geographic Data.

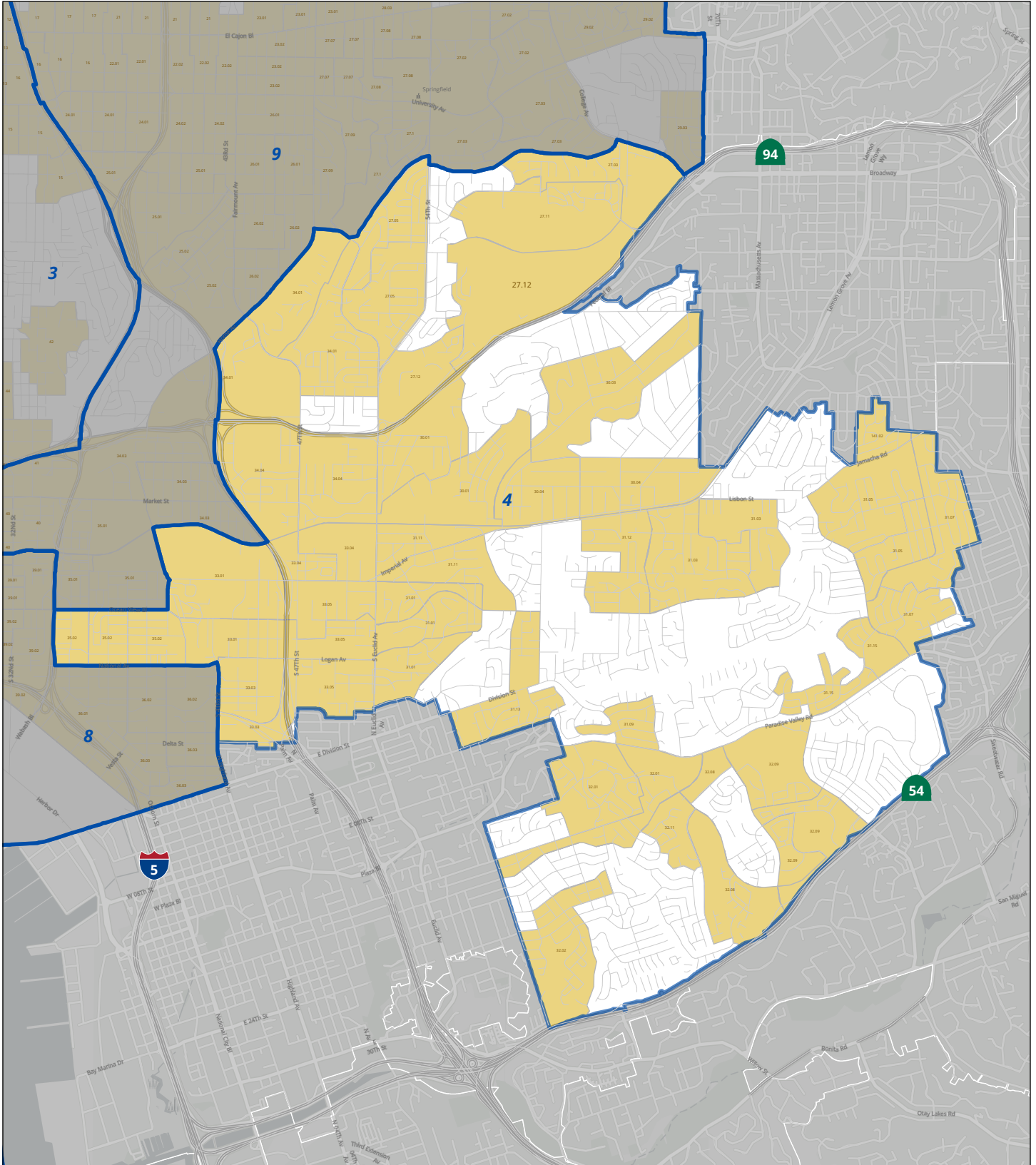
THIS MAP/DATA IS PROVIDED WITHOUT WARRANTY OF ANY KIND, EITHER EXPRESS OR IMPLIED, INCLUDING BUT NOT LIMITED TO, THE IMPLIED WARRANTIES OF MERCHANTABILITY AND FITNESS FOR A PARTICULAR PURPOSE.  
Copyright SANGIS 2023 - All Rights Reserved.  
Full text of this legal notice can be found at: <https://gis.sangis.org/sanportal/apps/storymaps/stories/d26146d84e834f6bcd58e4e20a983a>





# City of San Diego: Community Development Block Grant **Council District: 4**

HUD Low and Moderate Income Census Block Groups (Household Income 80% or Below) \*

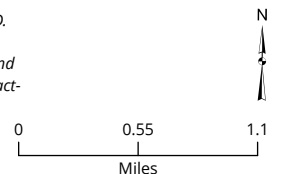


- Tract # Low / Mod (GTE 51%)
- Council Districts
- City of San Diego
- Municipal Boundaries

\* CDBG-Eligible Census Tract-Block Group as identified by HUD.

Source: American Community Survey 5-Year 2011-2015 Low and Moderate Income Summary Data and Census 2015 Census Tract-Block Group Geographic Data.

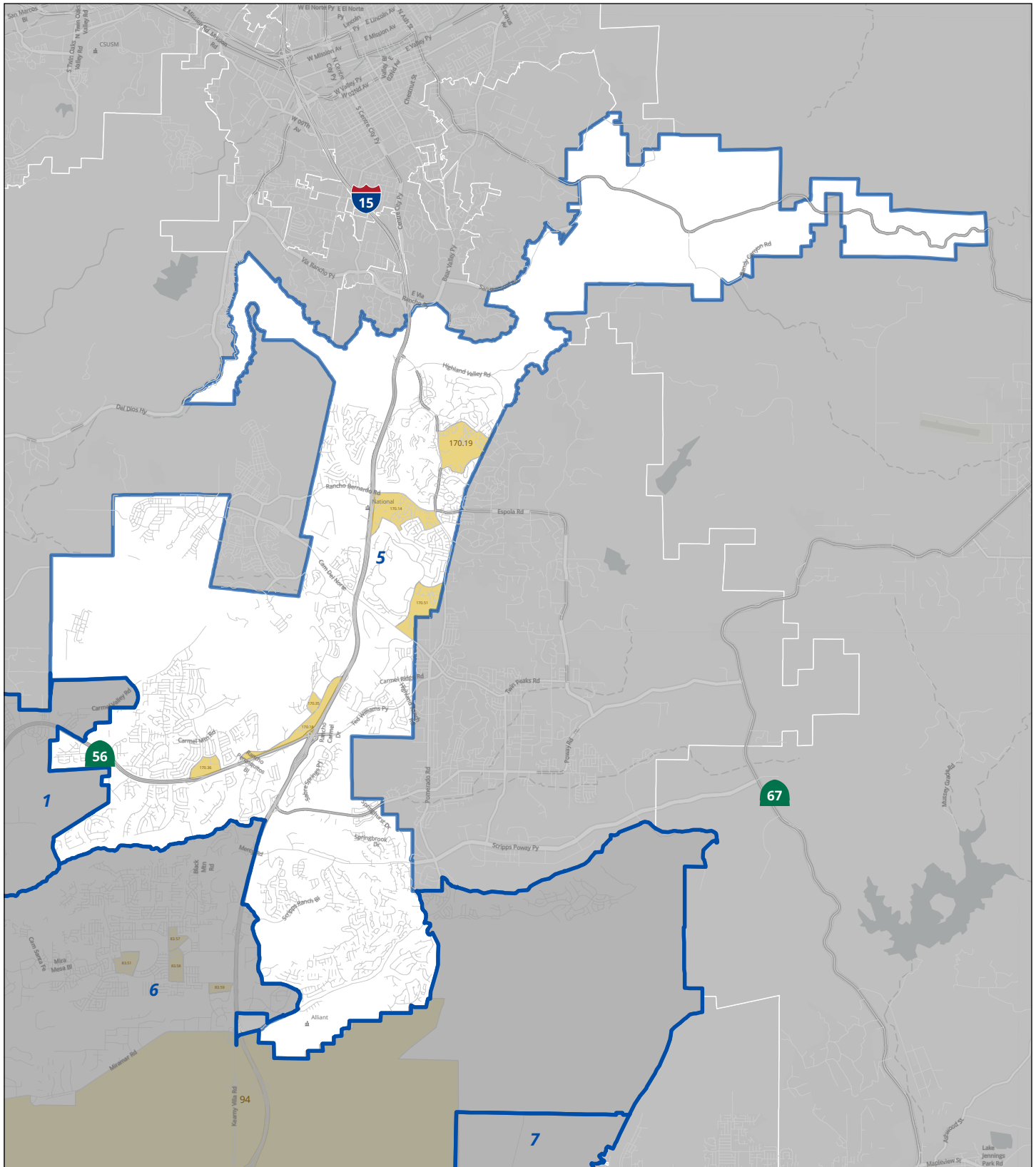
THIS MAP/DATA IS PROVIDED WITHOUT WARRANTY OF ANY KIND, EITHER EXPRESS OR IMPLIED, INCLUDING BUT NOT LIMITED TO, THE IMPLIED WARRANTIES OF MERCHANTABILITY AND FITNESS FOR A PARTICULAR PURPOSE.  
Copyright SANGIS 2023 - All Rights Reserved.  
Full text of this legal notice can be found at: <https://gis.sangis.org/sanportal/apps/storymaps/stories/d26146d84e34ff6bcd584e620a983a>





# City of San Diego: Community Development Block Grant **Council District: 5**

HUD Low and Moderate Income Census Block Groups (Household Income 80% or Below) \*

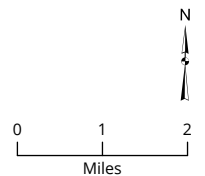


- Tract # Low / Mod (GTE 51%)
- City of San Diego
- Municipal Boundaries
- Council Districts

\* CDBG-Eligible Census Tract-Block Group as identified by HUD.

Source: American Community Survey 5-Year 2011-2015 Low and Moderate Income Summary Data and Census 2015 Census Tract-Block Group Geographic Data.

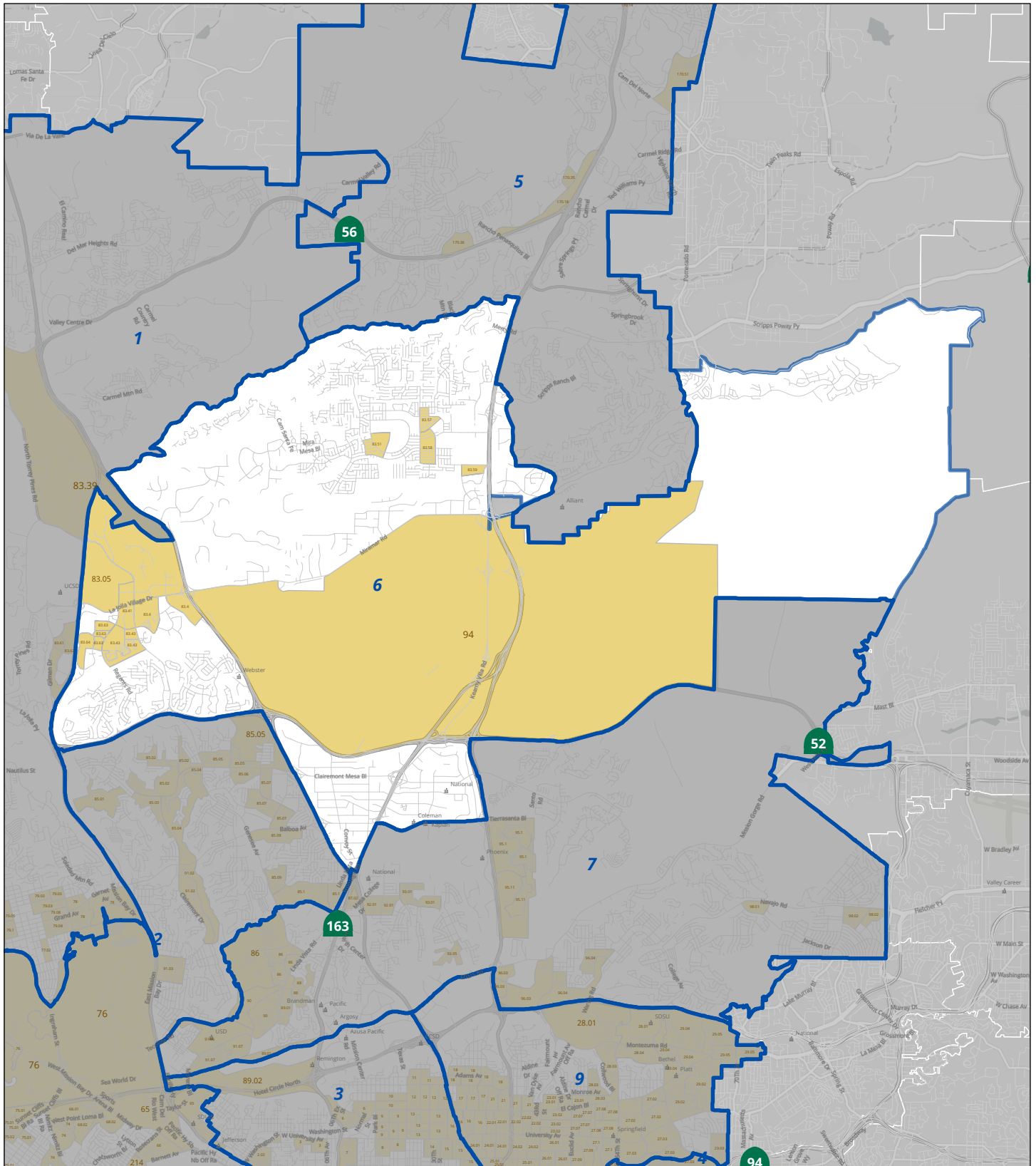
THIS MAP/DATA IS PROVIDED WITHOUT WARRANTY OF ANY KIND, EITHER EXPRESS OR IMPLIED, INCLUDING BUT NOT LIMITED TO, THE IMPLIED WARRANTIES OF MERCHANTABILITY AND FITNESS FOR A PARTICULAR PURPOSE.  
Copyright SANGIS 2023 - All Rights Reserved.  
Full text of this legal notice can be found at: <https://gis.sangis.org/sanportal/apps/storymaps/stories/d26146d84e34f6bcd58e4e20a983a>





# City of San Diego: Community Development Block Grant **Council District: 6**

HUD Low and Moderate Income Census Block Groups (Household Income 80% or Below) \*



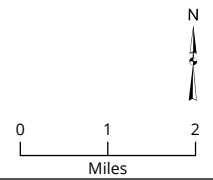
- Tract # Low / Mod (GTE 51%)
- City of San Diego
- Municipal Boundaries
- Council Districts

\* CDBG-Eligible Census Tract-Block Group as identified by HUD.

Source: American Community Survey 5-Year 2011-2015 Low and Moderate Income Summary Data and Census 2015 Census Tract-Block Group Geographic Data.

THIS MAP/DATA IS PROVIDED WITHOUT WARRANTY OF ANY KIND, EITHER EXPRESS OR IMPLIED, INCLUDING BUT NOT LIMITED TO, THE IMPLIED WARRANTIES OF MERCHANTABILITY AND FITNESS FOR A PARTICULAR PURPOSE.

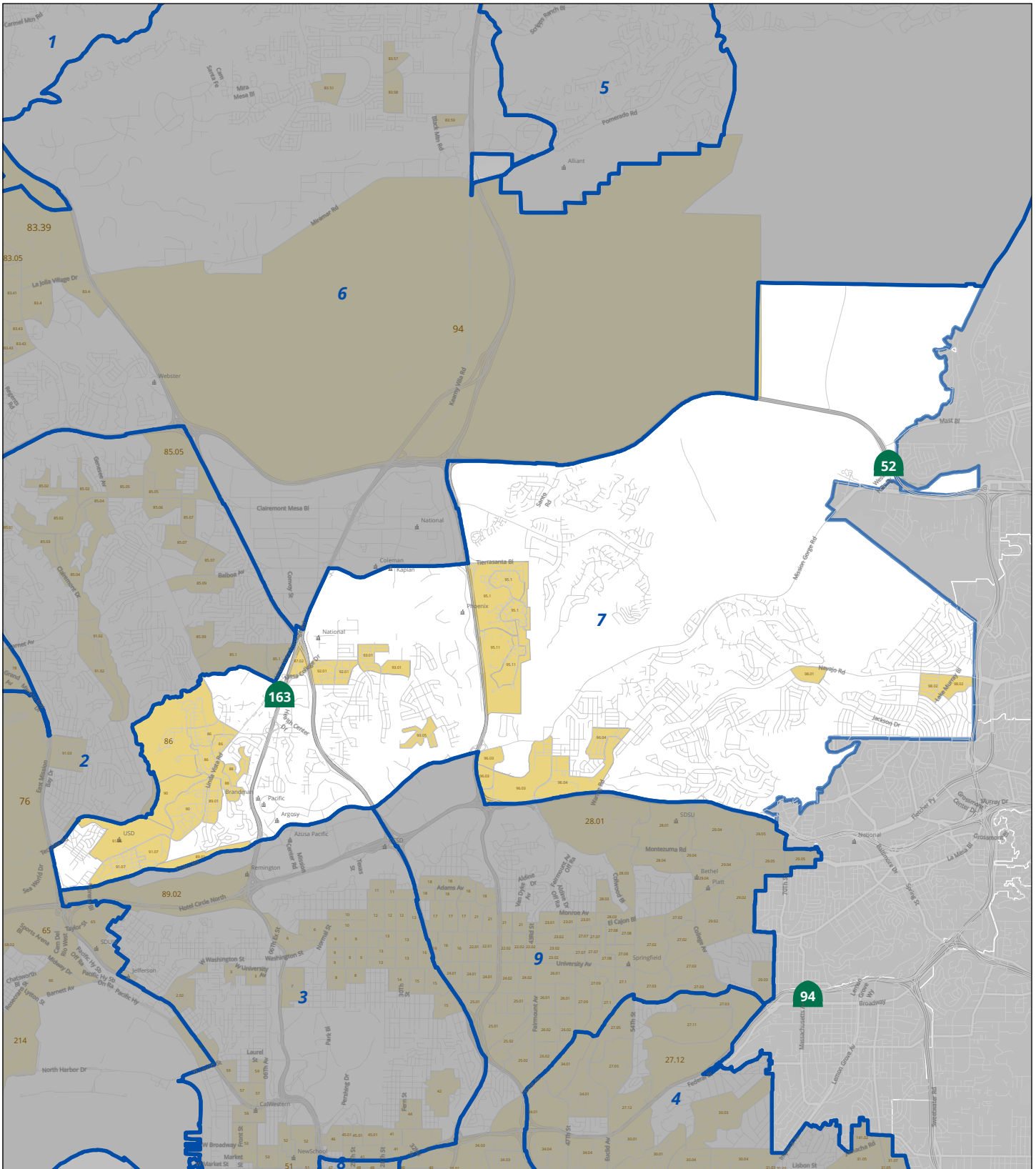
Copyright SANGIS 2023 - All Rights Reserved.  
Full text of this legal notice can be found at: <https://gis.sangis.org/sanportal/apps/storymaps/stories/426146d84e34f6bcd584e620a983a>





# City of San Diego: Community Development Block Grant **Council District: 7**

HUD Low and Moderate Income Census Block Groups (Household Income 80% or Below) \*



- Tract # Low / Mod (GTE 51%)
- Municipal Boundaries
- Council Districts
- City of San Diego

\* CDBG-Eligible Census Tract-Block Group as identified by HUD.

Source: American Community Survey 5-Year 2011-2015 Low and Moderate Income Summary Data and Census 2015 Census Tract-Block Group Geographic Data.



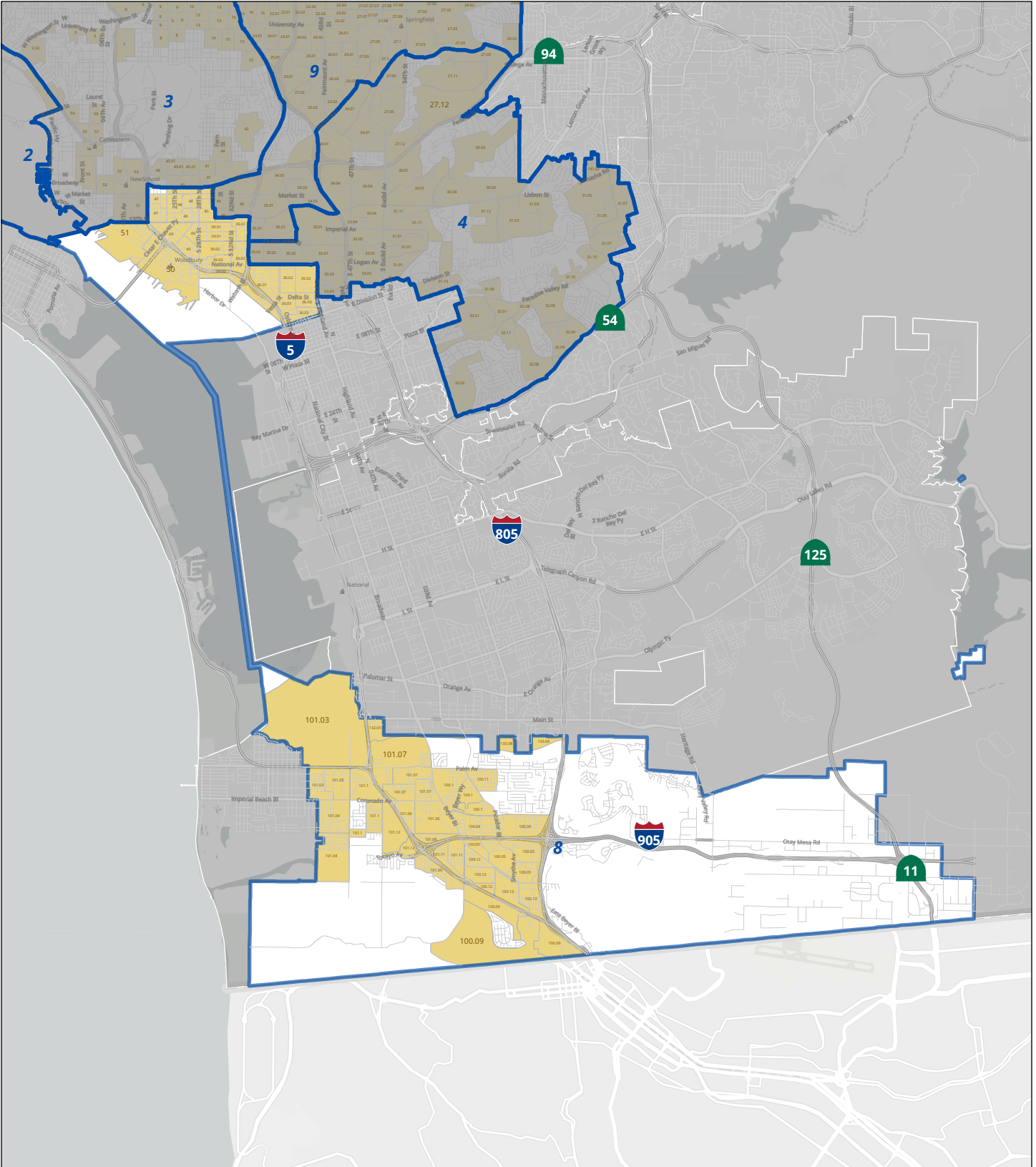
THIS MAP/DATA IS PROVIDED WITHOUT WARRANTY OF ANY KIND, EITHER EXPRESS OR IMPLIED, INCLUDING BUT NOT LIMITED TO, THE IMPLIED WARRANTIES OF MERCHANTABILITY AND FITNESS FOR A PARTICULAR PURPOSE.  
 Copyright SANGS 2023 - All Rights Reserved.  
 Full text of this legal notice can be found at: <https://gis.sangis.org/sanportal/apps/storymaps/stories/d26146d84e634f6bcd584e620a983a>





# City of San Diego: Community Development Block Grant **Council District: 8**

HUD Low and Moderate Income Census Block Groups (Household Income 80% or Below) \*



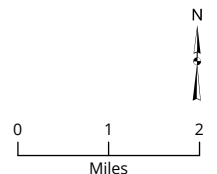
- Tract # Low / Mod (GTE 51%)
- City of San Diego
- Municipal Boundaries
- Council Districts

\* CDBG-Eligible Census Tract-Block Group as identified by HUD.

Source: American Community Survey 5-Year 2011-2015 Low and Moderate Income Summary Data and Census 2010 Census Tract-Block Group Geographic Data.

THIS MAP/DATA IS PROVIDED WITHOUT WARRANTY OF ANY KIND, EITHER EXPRESS OR IMPLIED, INCLUDING BUT NOT LIMITED TO, THE IMPLIED WARRANTIES OF MERCHANTABILITY AND FITNESS FOR A PARTICULAR PURPOSE.

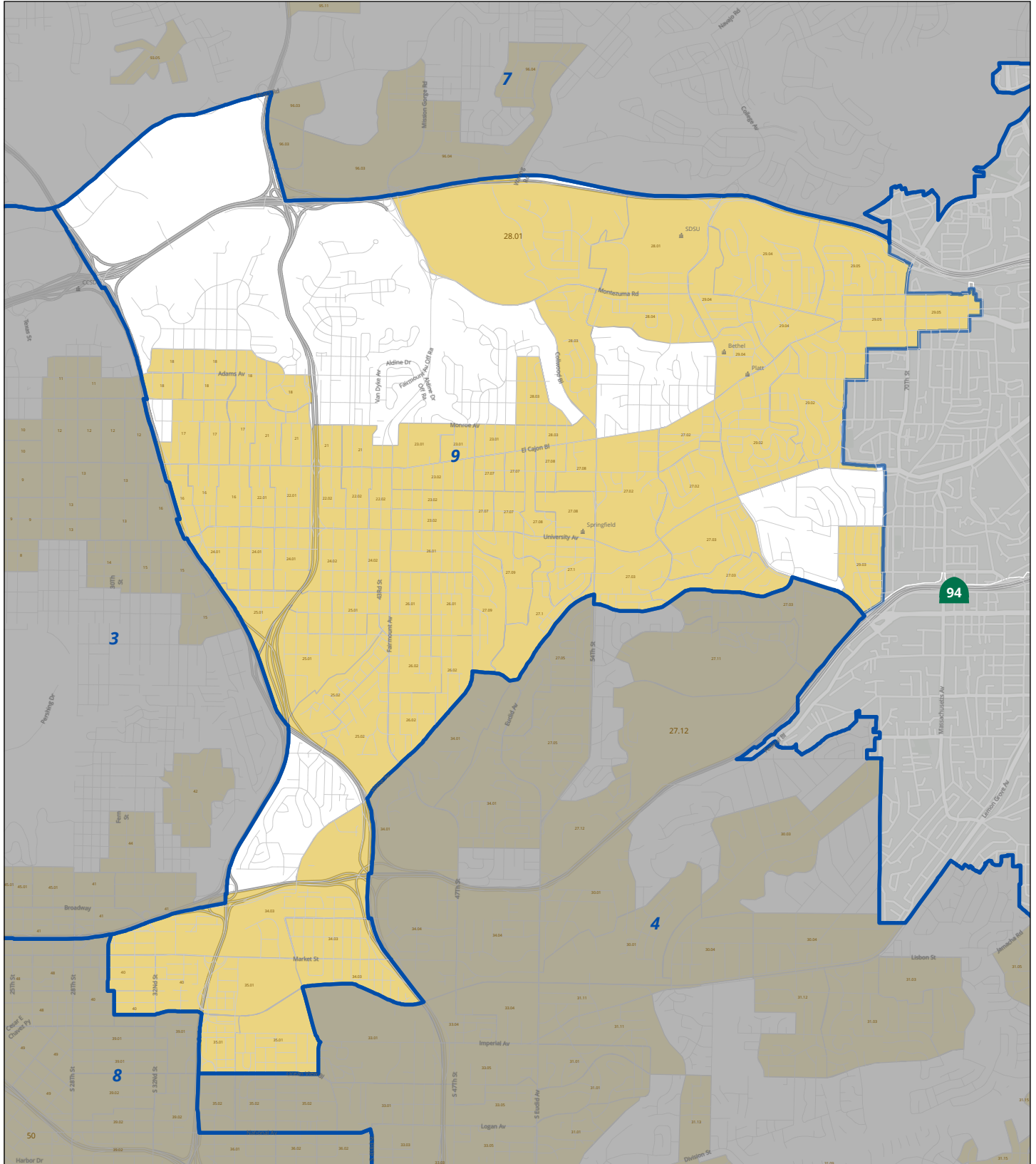
Copyright SANGIS 2023 - All Rights Reserved.  
Full text of this legal notice can be found at: <https://gis.sangis.org/sanportal/apps/storymaps/stories/426146d84e34f6bcd58e4e20a983a>





# City of San Diego: Community Development Block Grant **Council District: 9**

HUD Low and Moderate Income Census Block Groups (Household Income 80% or Below) \*



Tract # Low / Mod (GTE 51%)

City of San Diego

\* CDBG-Eligible Census Tract-Block Group as identified by HUD.

Council Districts

Municipal Boundaries

Source: American Community Survey 5-Year 2011-2015 Low and Moderate Income Summary Data and Census 2015 Census Tract-Block Group Geographic Data.

THIS MAP/DATA IS PROVIDED WITHOUT WARRANTY OF ANY KIND, EITHER EXPRESS OR IMPLIED, INCLUDING BUT NOT LIMITED TO, THE IMPLIED WARRANTIES OF MERCHANTABILITY AND FITNESS FOR A PARTICULAR PURPOSE.

Copyright SANGIS 2023 - All Rights Reserved. Full text of this legal notice can be found at: <https://gis.sangis.org/sanportal/apps/storymaps/stories/426146d84e34f6bcd58e4e20a983a>

