

San Diego City Auditor

PERFORMANCE AUDIT OF THE CITY TREASURER'S DELINQUENT ACCOUNTS PROGRAM

DEVELOPMENT SERVICES DEPARTMENT DEPOSIT ACCOUNTS

December 2, 2009

**Office of the City Auditor
Eduardo Luna, CIA, CGFM, City Auditor**

This Page Intentionally Left Blank



THE CITY OF SAN DIEGO

December 2, 2009

Honorable Mayor, City Council, and Audit Committee Members
City of San Diego, California

Transmitted herewith is an audit report on the City Treasurer's Delinquent Accounts Program. This report focuses only on the Deposit Accounts of the Development Services Department. This report is in accordance with City Charter Section 39.2. Management's response to our audit recommendations can be found after Attachment II of the report.

If you need any further information please let me know. We would like to thank City Treasurer and Development Services Department staff, as well as representatives from other City departments for their assistance and cooperation during this audit. All of their valuable time and efforts spent on providing us information is greatly appreciated. The audit staff responsible for this audit report is DeeDee Alari and Kyle Elser.

Respectfully submitted,

Eduardo Luna
City Auditor

cc: Jay M. Goldstone, Chief Operating Officer
Mary Lewis, Chief Financial Officer
Andrea Tevlin, Independent Budget Analyst
Jan Goldsmith, City Attorney
Gail Granewich, City Treasurer
Kelly Broughton, Director Development Services Department
Ken Whitfield, City Comptroller
Debra Bond, OneSD Project Director



This Page Intentionally Left Blank

Table of Contents

BACKGROUND	4
OBJECTIVE, SCOPE AND METHODOLOGY	6
AUDIT RESULTS	8
RECOMMENDATIONS	16
CONCLUSION	19
ATTACHMENT I	
ATTACHMENT II	

Background

City Treasurer's Delinquent Accounts Program

San Diego City Charter Section 45 and San Diego Municipal Code §22.1707 authorizes the City Treasurer to demand and receive payment of past due accounts and to charge fees and interest on those accounts. In 1983, the City of San Diego (City) created a centralized, city-wide collections program—the Delinquent Accounts Program.

The Office of the City Treasurer (Treasurer) manages the Delinquent Accounts Program, which receives past due account referrals from many City departments via a myriad of system interfaces as well as manual referral. Examples of the types of accounts referred include business and rental unit tax, parking tickets, library fines, water and sewer bills, and police and fire fees and permits. City departments are required to make referrals to the Delinquent Accounts Program within 30 days of the due date.¹ The Treasurer's staff use the Columbia Ultimate Business System (CUBs) to track and manage delinquent accounts and collections efforts and activities.

Development Services Department Deposit Accounts

The Development Services Department (DSD) provides review, permit, inspection, and code enforcement services for building and development projects throughout the City of San Diego. Most DSD fees are flat fees, paid by applicants prior to a service being delivered; however, for more complex projects (generally land development permits) the applicant is required to make a deposit into the Subdivision Deposit Trust Fund.² The deposit amount depends on the size and type of project and is determined by a fee/deposit schedule approved by City Council. These deposit-based accounts can be for discretionary or ministerial (e.g. right-of-way, easement, etc.) projects and are collectively referred to as Deposit Accounts.³

¹ Administrative Regulation (A.R.) 63.30, March 1, 2001.

² Fund 63020.

³ Also commonly called Subdivision Accounts although not all Deposit Accounts are associated with an actual subdivision.

Each Deposit Account project is assigned a lead City staff person – usually a Development Project Manager (DPM) for discretionary projects or an Engineer or Reviewer for ministerial projects. The lead person acts as a single point of contact for the applicant and is responsible for managing the project. Project management is done using DSD’s Project Tracking System (PTS), a DSD created database in use since approximately 2001.

Deposit Account projects are tracked individually, within the Subdivision Trust Fund, by job order number⁴ in the City Comptroller’s accounting system.⁵ An applicant’s initial deposit is drawn down, primarily by City staff labor charges. Subsequent deposits are required to maintain a minimum positive balance sufficient to cover estimated review costs based on the type of project.⁶ If subsequent deposits are not made into the Deposit Accounts, these accounts go into deficit.

⁴ Job Order number changed to Internal Order number in SAP.

⁵ AMRIS (mainframe) until June 30, 2009 and SAP beginning July 1, 2009.

⁶ See DSD Information Bulletins 503 and 504 for required deposit amounts and balances.

Objective, Scope, and Methodology

In October 2008 the City Council approved the City Auditor's Fiscal Year 2009 Audit Work Plan which included a performance audit of the City Treasurer's Delinquent Accounts Program.

The main objectives of the audit are to determine if:

- Opportunities exist to improve the collection of past due amounts owed to the City; and
- Delinquent accounts are properly recorded in the City's Comprehensive Annual Financial Report (CAFR).

To accomplish these audit objectives we performed a review of the current⁷ billing and collection practices of several City departments that refer past due accounts to the Treasurer's Delinquent Accounts Program. During this review, we found significant weaknesses in the City's billing and the Development Services Department's (DSD's) collection practices which required immediate reporting. The following audit procedures were used to evaluate DSD's billing and collection process:

- Analyzed Subdivision Trust Fund account activity over time;
- Reviewed City laws and regulations related to accounts receivable, billing and collection;
- Reviewed DSD policies and procedures related to Deposit Accounts;
- Interviewed DSD project management, Financial Services and information technology staff;

This report addresses the billing and collection process for DSD Deposit Accounts as of June 30, 2009. This audit was not a performance audit of DSD's Deposit Account project management model. We did not evaluate whether or not the Deposit Account model is the most efficient and effective model for ministerial or discretionary projects, as compared to a more flat fee model.

⁷ Prior to SAP implementation.

The performance audit of the City Treasurer's Delinquent Accounts Program is ongoing and subsequent reports will be issued.

We evaluated the internal controls related to our audit objectives. Our conclusions on the effectiveness of these controls are detailed within the following audit results.

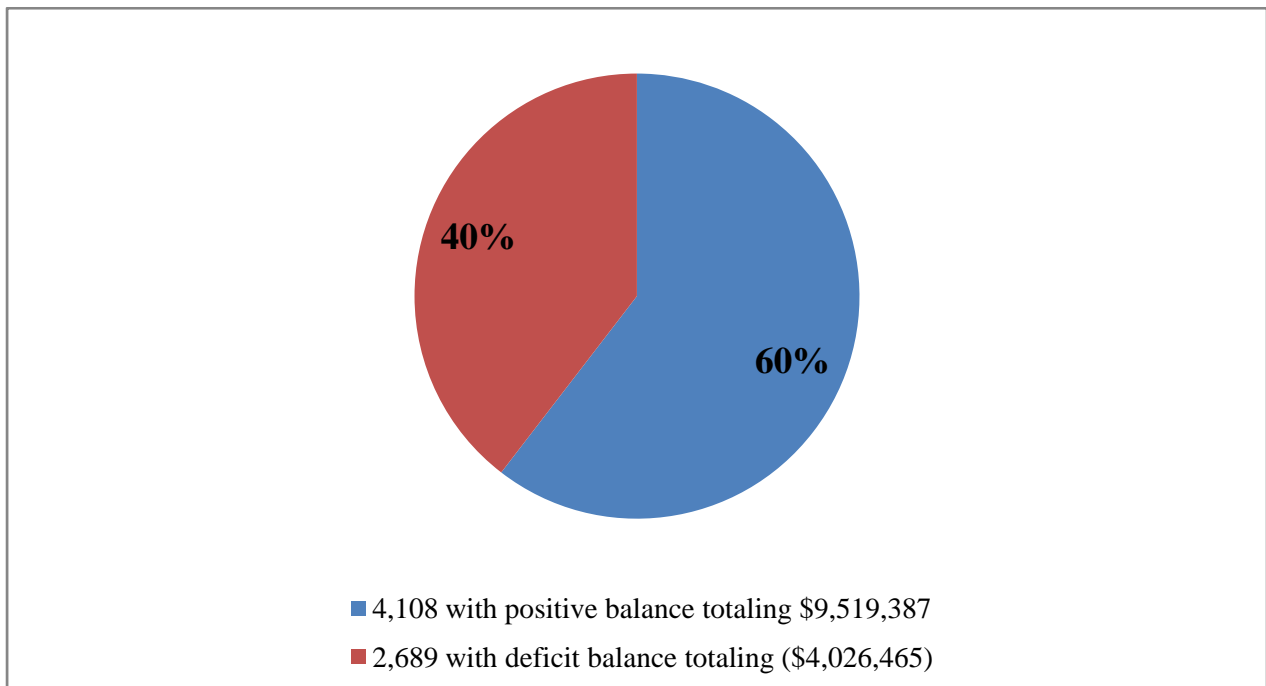
We conducted this audit in accordance with generally accepted government auditing standards. Those standards require that we plan and perform the audit to obtain sufficient, appropriate evidence to provide a reasonable basis for our findings and conclusions based on our audit objectives. We believe the evidence obtained provides a reasonable basis for our findings and conclusions based on our audit objectives.

Audit Results

The Development Services Department (DSD) Relies On An Inefficient And Ineffective Billing And Collection Process For Deposit Accounts Resulting In \$3.4 Million Of Unpaid Fees.

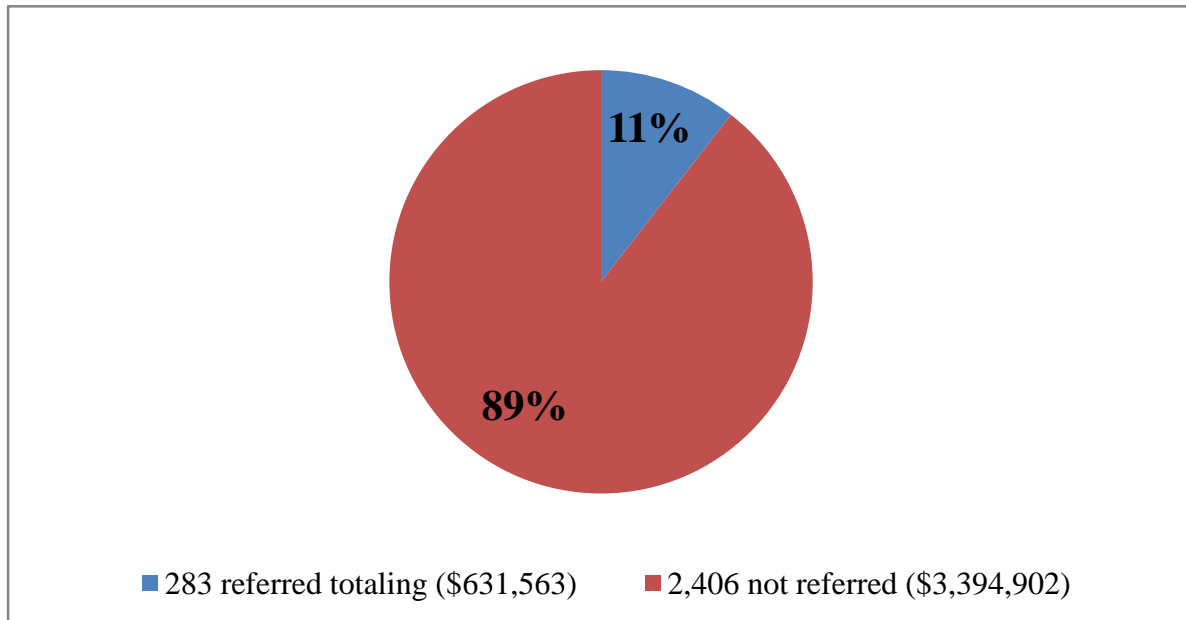
We found that DSD relies on an outdated City billing process and has a decentralized, mostly manual collection process for managing its Deposit Accounts, which has resulted in a significant number of Deposit Accounts falling into deficit. Our audit revealed that DSD has not referred most of these past due accounts to the Treasurer’s Delinquent Accounts Program for collection in a timely manner. As of June 30, 2009, 40 percent (about 2,700) of the projects in the Subdivision Deposit Trust Fund had a deficit balance totaling over \$4 million, as shown in Figure 1. Of those projects in deficit, DSD has referred 11 percent (representing 16 percent of the total deficit balance) to the Treasurer’s Delinquent Accounts Program, as shown in Figure 2.

Figure 1: Status of Projects in Subdivision Deposit Trust Fund, as of June 30, 2009



Source: Auditor analysis of City Comptroller Subdivision Trust Fund report.

Figure 2: Subdivision Deposit Trust Fund Accounts Referred to the Delinquent Accounts Program, as of June 30, 2009

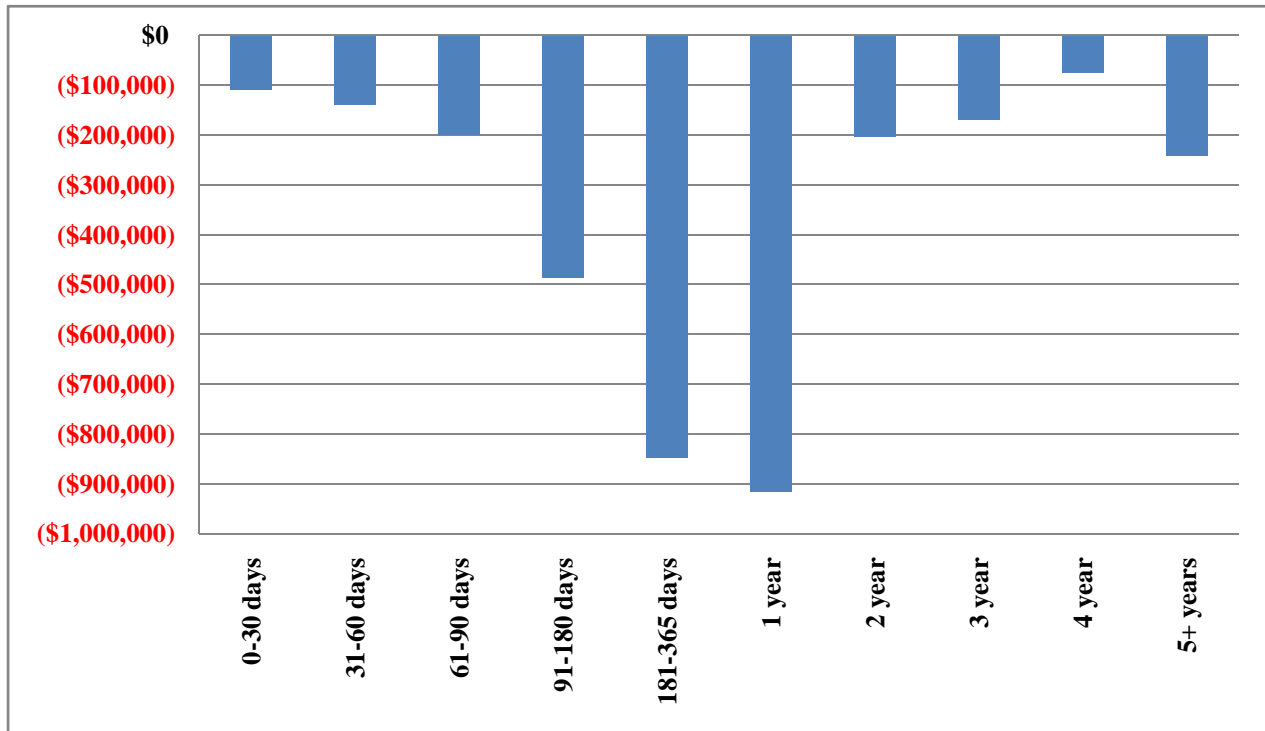


Source: Auditor analysis of City Comptroller Subdivision Trust Fund report.

The 2,406 deficit Deposit Accounts not referred to the Delinquent Accounts Program average approximately \$1,400, range up to almost \$69,000, and have a median of under \$500. As shown in Figure 3, some of the deficit accounts not referred to the Delinquent Accounts Program as of June 30, 2009 were between 30 to 60 days past due; however, the vast majority of the total deficit balance (approximately 93 percent) were over 60 days old, and almost half (47 percent) were over a year past due. The total value of these past due deficit accounts not referred to the Delinquent Accounts Program was approximately \$3.4 million as of June 30, 2009. It should be noted that although an account might remain in deficit for many months (or longer), the applicant may still be making payments. An analysis of the deficit accounts not referred as of June 30, 2009, showed that 100 of the 2,406 deficit accounts had a current period⁸ deposit. Those current period deposits totaled over \$400,000. The aging depicted in Figure 3 includes all un-referred deficit accounts as of June 30, 2009, regardless of the last payment date.

⁸ Current Period is defined as the four week period ending June 30, 2009. In some cases, an applicant that has made monthly payments may still have an account shown as a deficit.

Figure 3: Aging of Deficit Accounts Not Referred to the Delinquent Accounts Program, as of June 30, 2009



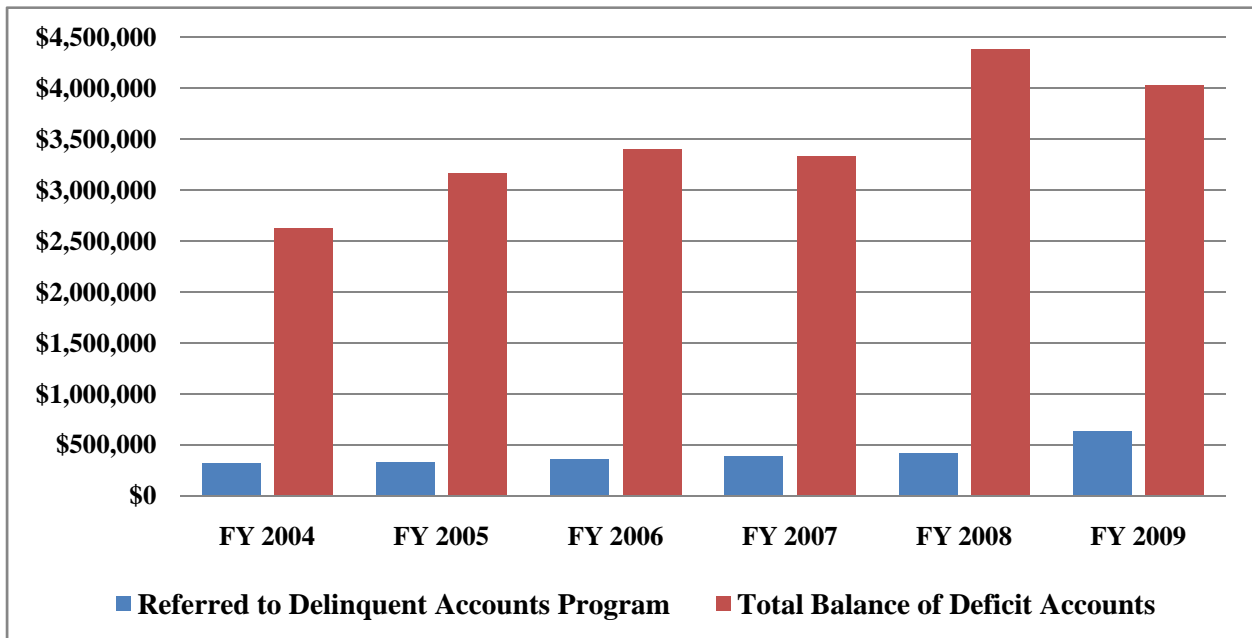
Source: Auditor analysis of City Comptroller Subdivision Trust Fund report.

DSD Department policy states that all Deposit Accounts should maintain a minimum positive balance at all times; however, if only accounts in deficit for over 60 days are considered as past due, the total past due amount as of June 30, 2009 would be \$3.1 million rather than \$3.4 million.

When Deposit Accounts fall into deficit, permit applicants continue to receive City development related services even though they have not paid for the service. By allowing Deposit Accounts to go into deficit without an established rule and automated process to enforce obtaining payment results in the City extending credit to applicants that is prohibited by City Charter Section 93. Specifically, City Charter Section 93 states, “The credit of the City shall not be given or loaned to or in aid of any individual, association or corporation.”

A review of Deposit Account deficit balances and past due account referral balances since fiscal year 2004 revealed that the deficit problem has been increasing, and referral of past due amounts to the Treasurer is minimal. As shown in Figure 4, between fiscal years 2004 and 2009, total deficit accounts averaged \$3.5 million on June 30 and increased from \$2.6 million in fiscal year 2004 to \$4.4 million in fiscal year 2008. Between fiscal years 2004 and 2009, DSD’s past due account referral balances to the Delinquent Accounts Program averaged \$400,000 or 12 percent of deficit accounts. We should note that in fiscal year 2009, DSD’s past due account referral balance to the Delinquent Accounts Program totaled \$631,563 compared to \$418,493 in fiscal year 2008, a 51 percent increase. Altogether, we found that very few deficit accounts end up referred to the Treasurer’s Delinquent Accounts Program and those that do are significantly older than 30 days past due as recommended by City regulations.⁹

Figure 4: Total Deficit Account Balance Compared to Amount Referred, as of June 30, For Fiscal Years 2004 Through 2009



Source: Auditor analysis of City Comptroller Subdivision reports.

⁹ City Administrative Regulation 63.30 section 4.e. recommends referral to Treasurer Delinquent Account Program within 30 days of the due date or another time frame as approved by the City Treasurer.

Applicants With Existing Deficit Accounts Are Allowed To Take Out Additional Permits

One contributing factor to the increase in Deposit Accounts may have resulted from DSD's practice to allow applicants with an existing deficit balance to open additional Deposit Accounts without first paying the existing balance due in full. As of June 30, 2009, we found that there were 32 applicants with over 1,000 unpaid deficit accounts totaling almost \$1.2 million. We found that AT&T/Pacific Bell had the greatest number of deficit accounts—746 Deposit Accounts for trenching permits that totaled approximately \$350,000 owed to the City. A detailed listing of applicants with two or more deficit accounts totaling \$10,000 or more as of June 30, 2009 is found on Attachment I. Attachment II is a summary of applicants with only one deficit account that totaled \$10,000 or more as of June 30, 2009.

A Decentralized Manual Billing and Collection Process Contributed to the Deficit Account Problem

We found several inherent flaws in the current billing and collection process which resulted in deficit accounts totaling \$3.4 million not referred to the Delinquent Accounts Program. We noted the following problems:

1. Individual Development Project Managers (DPMs)¹⁰ are responsible for pursuing payment on their deficit accounts. We found that 96 individual project managers' deficit account balances averaged approximately \$35,000 and varied dramatically from less than \$100 to more than \$300,000. DSD's Development Review Procedures require DPMs to review "accounts on a regular basis" and request additional deposits from the applicants sufficient to maintain the required minimum positive balance. With almost 7,000 Deposit Accounts, this manual review is difficult to maintain. Subsequent deposit requests are invoiced in DSD's Project Tracking System (PTS). To create a PTS invoice, the DPM first researches the project's actual deficit balance (described in #5 below) and then checks the fee schedule for the required minimum balance. The aggregate number is then typed into PTS to create the invoice.

¹⁰ DPMs are the lead city staff person for discretionary projects. Other city staff personnel such as Engineers, Reviewers or Planners can act as lead city staff person for a Deposit Account project, particularly ministerial projects. For purposes of this report, DPM refers to all staff that act as the lead for any deposit account project.

2. Following up on deficit accounts is a time consuming process. DPMs are supposed to send a 30-day “courtesy letter” requesting a deposit for deficit accounts, make a diary entry in PTS, and create a reminder in Microsoft Outlook¹¹ to follow-up. This effort is followed by a 15-day certified “collections letter,” another PTS diary entry and another Outlook reminder. If payment is still not received, the DPM is supposed to “refer the account” to the Delinquent Accounts Program.

To refer the account to the Treasurer’s Delinquent Accounts Program, the DPM must send an email or memorandum to DSD Financial Services and provide them with copies of the courtesy and collection letters along with a signed Deposit Account closure form. Financial Services then creates an invoice in the City’s accounts receivable system (ARIS). If the invoice remains unpaid after the due date (10 days for General invoices and 90 days for Government invoices), ARIS automatically refers the account to the Delinquent Accounts Program system (CUBs) via an electronic interface file. With the exception of the ARIS/CUBs two-way system interface, every step of the DSD collection effort is manual.

3. DSD’s Project Tracking System (PTS) does not interface with the City’s accounting system and PTS invoices do not create accounts receivables in the City’s accounting system. DSD advised that PTS was not designed to be an accounting system and that customers are not required to pay PTS invoices. As a result, unpaid PTS invoices do not automatically get referred to the Treasurer’s Delinquent Accounts Program.
4. City employees are allowed to continue charging staff time to projects with deficits. A PTS invoice alerts users not to accept new submittals or inspections, but it does not suspend all work on the project. According to the DSD Director, a PTS invoice does stop staff from accepting a project review cycle and therefore no plan check services can be provided, but it does not prevent staff charges that are unrelated to the project review cycle process. Labor charges can continue to be posted to the projects because these charges are processed in the City’s accounting system. In addition, many of the labor charges are generated outside of DSD (e.g. Engineering & Capital Projects) yet DSD project managers have no authority to approve or adjust these charges. The DSD

¹¹ Outlook is the City’s email and calendar system.

Director advised that DSD has the ability to not record permits and not release project performance bonds until full payment is made on the deficit account associated with the project. This prevents full utilization of the approved permit or release of the performance surety and aids in the collection of outstanding deficits.

5. Accurate Deposit Account balances are cumbersome to obtain. We found that the process for a DPM to check a project's account balance is time-consuming and often does not accurately depict the correct balance. To determine an account balance, the DPM must access a mainframe computer screen (AMRIS) and enter the project's job order number to obtain a balance. However, the balance is not "real time" due to the City's lag time in accruing labor charges.¹²

This problem was exacerbated on July 1, 2009, when SAP replaced the City's mainframe accounting system. Since July 1, 2009, DPMs must check the mainframe for labor charges (which are still lagged) and DSD's PTS system for deposits (because deposits are no longer reflected in the mainframe) to calculate the project's balance. The DPM must repeat this process for each project they are responsible for, which could number in the hundreds. We should note that the mainframe system is in the process of being eliminated, and eventually SAP¹³ alone will contain the account balances; however, SAP will not change the labor charge lag time issue.

Prior to July 1, 2009, monthly statements, generated by the Comptroller's Office, were sent to applicants with either a deficit balance or a positive balance with current period activity¹⁴ but no statements have been generated since June 30, 2009, due to the OneSD SAP implementation. The Comptroller's system did not communicate the required minimum balance to applicants, but only depicted account activity and balance. Statements with a deficit balance did not create an account receivable and nothing happened if a monthly statement containing a deficit balance went unpaid. DSD is in the process of reinstating and improving the monthly statements, which will be sent to all applicants, regardless of balance or activity beginning in January 2010. The DSD

¹² City staff enter labor charges two weeks in arrears and payment is made two weeks after that, which creates a four week lag before labor charges are reflected in the balance.

¹³ SAP implementation currently underway citywide using project name OneSD.

¹⁴ Accounts with a positive balance and no current period activity did not receive a monthly statement.

generated statements will include account activity and balance (as contained in SAP), the required minimum balance, and have a tear off remittance for accounts with a balance due. DSD advised that it has been working closely with OneSD to ensure there are a sufficient number of operation accounts available in SAP to provide applicants with a detailed accounting of charges on the new statements.

A decentralized billing system with no system or automatic triggers leaves collection efforts at the discretion of individual project managers. DPMs may or may not follow department procedures, and do so under their own individual timelines. This process is weakened even further when DPMs are hesitant to pursue collection when they do not have confidence in the project's actual account balance. This decentralized, manual process also results in confusion for the applicants. For example, in addition to the courtesy and collections letters, an applicant may end up receiving a series of PTS invoices, monthly statements, an ARIS invoice and a CUBs invoice – all of which may contain different amounts. If a payment is received, only certain systems are updated to reflect the payment, depending on where the applicant made the payment. Lastly, during this entire process, further labor charges may have been posted, increasing the project's deficit balance.

DSD Needs To Take Steps To Immediately Fix Deficit Deposit Accounts

Timely referral to the Treasurer's Delinquent Accounts Program is the most important element to increasing collectability. An analysis of the collection rate of the Delinquent Accounts Program over the past five years for ARIS users citywide shows that over 52 percent of past due accounts referred to the Delinquent Accounts Program are collected. When filtered for DSD Deposit Accounts only, the collection rate is 22 percent.¹⁵ This decrease is due to the age of the account at referral. DSD's lengthy collection process – including the courtesy and collections letter before the ARIS invoice – as well as its lax timeline to start the process results in an increase in the age of accounts before referral. If the existing un-referred deficit accounts over 60 days old (\$3,144,329 at June 30, 2009) had been referred in a timely manner, approximately \$1.6 million

¹⁵ Since the performance audit of the Delinquent Accounts Program is ongoing, a full analysis of its collection rates has not been performed. These percentages were derived by taking the sum of all referrals divided by the sum of all collections, with no consideration for collection lag time.

(52 percent) could have been recovered. Even with a 22 percent collection rate (due to the age of accounts) an estimated \$690,000 could be recovered.

In our opinion, an effective and efficient billing and collection process that is centralized, standardized and automated is essential to maximize debt collection. A process that is left at the discretion of dozens of different City staff, and which is primarily manual, results in a large number of past due accounts which grow older and less collectable over time.

Recommendations for the Development Services Department

1. Review current deficit account balances and immediately refer existing past due accounts to the Treasurer's Delinquent Accounts Program.
2. Establish appropriate criteria and timelines that will trigger DSD Financial Services to generate an ARIS invoice¹⁶ with an automatic referral to the Treasurer's Delinquent Accounts Program of unpaid invoices after the invoice due date. If the timeline for referral exceeds 30 days past due, request approval for a more appropriate time frame from the City Treasurer per City regulations.¹⁷ Centralize the deficit account invoicing process in DSD's Financial Services and eliminate courtesy and collection letters as well as Project Tracking System invoices.
3. Establish procedures for DSD cashiers to coordinate with Financial Services to ensure payments received on ARIS invoices are properly applied to the invoice so paid accounts are not referred to the Treasurer's Delinquent Accounts Program in error.
4. Establish procedures and strengthen controls in the Project Tracking System that prevent DSD cashiers from accepting payment on past due ARIS invoices (those referred to the Treasurer's Delinquent Accounts Program). Instruct applicants with referred accounts to make payments at Treasurer's Delinquent Accounts Program.

¹⁶ After implementation of the Accounts Receivable module of SAP in 2010, substitute ARIS invoice for SAP invoice.

¹⁷ Administrative Regulation (A.R.) 63.30, March 1, 2001.

5. Reinstate monthly statements, for all applicants, which contain enough detail regarding charges (staff person name, description of work performed, hours spent and amount, etc.), as well as language stating that applicants have a limited amount of time to dispute any charges. Monthly statements for accounts in deficit should also contain a remittance advice, the deficit amount, the minimum positive balance required, a due date and language that clearly states that unpaid amounts will be referred to the Treasurer's Delinquent Accounts Program (based on the established criterion and timeline from #2 above).
6. Implement a late penalty fee to ensure more timely payments on deficit accounts.
7. Require Development Project Managers (DPMs) as well as any other City staff person acting as lead on Deposit Account projects to review labor charges on all relevant projects at least bi-weekly to help identify and correct potentially erroneous charges prior to the issuance of monthly statements.
8. Evaluate the adequacy of Deposit Account initial deposit amounts as well as the minimum required balance amounts to help minimize the frequency and speed at which Deposit Accounts fall into deficit.
9. Implement a policy that would prohibit applicants with an existing deficit account to open another Deposit Account until the existing deficit is paid in full.
10. Implement system interfaces between DSD's Project Tracking System and the current and future SAP modules to increase the automation of manual billing and collection tasks.

Recommendation for the Office of the City Treasurer

1. Assist the Development Services Department by providing a periodic report of payments received on accounts referred to the Delinquent Accounts Program.

Recommendations for OneSD Project Management

1. Ensure DSD Financial Services (as well as DPMs and other project leads) are given access to data, screens and/or reports in the SAP Financial and Logistics module (FiLo) that clearly and accurately depict project balance, activity and length of time in deficit.
2. Ensure DPMs are given access to labor charge detail by job order number after implementation of SAP's Human Capital Management (HCM) module.
3. Provide DSD with a sufficient number of operation accounts in SAP to ensure Deposit Account monthly statements contain enough detail regarding customer charges.

Conclusion

During our audit of the Delinquent Accounts Program of the Office of the City Treasurer, we found significant weaknesses in the billing and collection practices of the Development Services Department (DSD) which required immediate reporting. DSD has a decentralized and mostly manual billing and collection process for Deposit Accounts which has resulted in a significant number of Deposit Accounts falling into deficit. DSD has failed to refer these past due amounts to the Delinquent Accounts Program for collection in a timely manner resulting in approximately \$3.4 million of uncollected fees as of June 30, 2009. DSD should immediately refer existing past due accounts to the Delinquent Accounts Program and make significant changes to its billing and collection procedures. By so doing, DSD could strengthen its financial controls over its Deposit Account program and ensure applicants pay for the City services they receive.

Applicants with Multiple Deficit Accounts totaling \$10,000 or more⁽¹⁾

As of June 30, 2009⁽²⁾

Applicant Name	Balance Due	Current ⁽³⁾ Period Deposits	Weeks in Deficit	Project Name
AFFIRMED HOUSING GROUP	\$ (9,296)	\$ -	160	PTS#77308 UNIVERSITY
AFFIRMED HOUSING GROUP	(5,720)	-	268	PTS #26447 CREED SIDE
AFFIRMED HOUSING GROUP	(1,938)	-	20	PTS# 174772 RIVERWALK APT - SCR
Subtotal	(16,954)	-		
AMERICAN TRAFFIC SOLUTIONS, INC.	(11,027)	-	20	PROJ# 166092 RLPE @ TORREY PINES RD
AMERICAN TRAFFIC SOLUTIONS, INC.	(6,300)	-	32	PROJ# 160170 RLPE @ KEARNY VILLA & BALBOA
AMERICAN TRAFFIC SOLUTIONS, INC.	(5,913)	-	20	PROJ# 160171 RLPE @ ROSECRANS & NIMITZ
AMERICAN TRAFFIC SOLUTIONS, INC.	(3,951)	-	32	PROJ# 159529 CONVOY & CLAIREMONT
AMERICAN TRAFFIC SOLUTIONS, INC.	(2,539)	-	24	PROJ# 160180 RLPE @ MIRA MESA & WESTVIEW
AMERICAN TRAFFIC SOLUTIONS, INC.	(1,022)	-	16	PROJ# 159523 RLPE QUALCOM WAY
Subtotal	(30,753)	-		
ANTHONY TAYLOR CONSULTANTS	(10,779)	-	12	PTS# 168680 2611 MARKET STREET SDP
ANTHONY TAYLOR CONSULTANTS	(1,463)	-	76	PROJ #145594 425 68TH STREET
ANTHONY TAYLOR CONSULTANTS	(35)	-	72	PROJ# 149560 TORREY PINES GLIDER SITE RECON
Subtotal	(12,276)	-		
BARRATT AMERICAN	(39,332)	-	24	PTS #45054 INNAT LA JOLLA IMPROVEMENTS
BARRATT AMERICAN, INC	(789)	-	32	GRADING, P/I, AND FINAL MAP FOR LONE TREE ESTATES
BARRATT AMERICAN, INC	(296)	-	20	INN AT LA JOLLA GRADING & IMPROVEMENT PLANS
BARRATT AMERICAN, INC	(57)	-	64	PTS# 95644 COSAT DEL SOL WATER EASEMENT VACATION
Subtotal	(40,475)	-		
BLACK MOUNTAIN RANCH	(4,643)	(4,000)	16	NORTH VILLAGE AT BLACK MOUNTAIN RANCH/TM/PDP/RZ
BLACK MOUNTAIN RANCH	(969)	-	8	BMR N. VILLAGE PH. III GRADING PLANS
BLACK MOUNTAIN RANCH LLC	(417)	-	16	PTS#25721 BMR NORTH VILLAGE UNIT 9BFINAL MAP
BLACK MOUNTAIN RANCH, LLC	(2,466)	-	48	PTS #43751 BMR CAMINO DEL SUR SOUTH 2 LANES
BLACK MOUNTAIN RANCH, LLC	(1,947)	-	36	PTS #52485 BMR NORTH VILLAGE UNIT 5 FM/PI
BLACK MOUNTAIN RANCH, LLC	(610)	-	44	PTS #13719 BMR LANDSCAPE MEDIAN IMPROVEMENTS
BLACK MOUNTAIN RANCH, LLC	(183)	-	8	PTS#87849 BMR EAST
BLACK MOUNTAIN RANCH, LLC	(168)	-	8	PTS #26051/BMR NORTH VILLAGE UNIT 9 MASTER IMPROVEMENTS
BLACK MOUNTAIN RANCH, LLC	(47)	-	8	PTS #69249 BMR WEST CLUSTER 2
Subtotal	(11,449)	(4,000)		
CARTER - REESE NO 4 LLC	(230)	-	96	SUBDIVISION MAP AND GRADING FOR THE VILLAGE AT EUCLID
CARTER REESE & ASSOCIATES	(3,570)	-	304	MESA MEWS CPA
CARTER REESE & ASSOCIATES	(621)	-	164	PTS #23421 SKYLINE PARK LOTS 7 & 8
CARTER REESE NO 15, LLC	(179)	-	284	PTS #6248 6456 EL CAJON BOULEVARD
CARTER REESE NO 15, LP	(513)	-	232	PTS #33812 MESA COMMONS
CARTER REESE NO 5, LLC	(715)	-	344	GRADING AND IMPROVEMENTS OF MARSTON POINT PLACE
CARTER REESE NO. 12, LP	(4,813)	-	108	PTS #16367 RENAISSANCE @ NORTH PARK
Subtotal	(10,642)	-		
CCDC	(21,457)	-	508	MARINA SUBAREA PHASE III(SEWER/WATER)
CENTRE CITY DEVELOPMENT CORP	(3,313)	-	268	PARK IN THE PARK PARCEL MAP
CENTRE CITY DEVELOPMENT CORP	(45,743)	-	48	CORE DISTRICT STREET LIGHTS - PHASE II
CENTRE CITY DEVELOPMENT CORP	(24,945)	-	20	NORTH EMBARCADERO VISIONARY PLAN-PHASE I
CENTRE CITY DEVELOPMENT CORP	(2,032)	-	36	CORTEZ HILL STREETScape REHABILITATION PROJECT
CENTRE CITY DEVELOPMENT CORP	(400)	-	176	DEMO & TEMP. IMP. FOR 12TH AVENUE & C ST. BLOCK
CENTRE CITY DEVELOPMENT CORP	(168)	-	388	WASHINGTON SCHOOL PARK PROJECT (CCDC)
Subtotal	(98,057)	-		
CHRIS SMITH	(11,907)	-	12	PROJ# 156102 CASA DEL SOL
CHRIS SMITH	(1,791)	-	48	PTS #148536 SMYTHE AVENUE CAMPGROUND G/PI
Subtotal	(13,699)	-		
COX COMMUNICATION INC	(1,107)	-	32	PROJ# 169758 COX TRENCHING JOB# 24822
COX COMMUNICATION INC	(658)	-	28	PROJ# 171225 COX TRENCHING JOB #24815-1
COX COMMUNICATION INC	(640)	-	32	PROJ# 169791 COX TRENCHING JOB# 24781
COX COMMUNICATION INC	(633)	-	32	PROJ# 169782 COX TRENCHING JOB# 24823
COX COMMUNICATION INC	(469)	-	40	PROJ# 163278 COX'S TRENCH @ HIGH BLUFF DR
COX COMMUNICATION INC	(394)	-	32	PROJ# 169110 COX TRENCHING JOB# 24766
COX COMMUNICATION INC	(337)	-	32	PROJ# 169793 COX TRENCHING JOB# 24810
COX COMMUNICATION INC	(305)	-	28	PROJ# 169700 COX TRENCHING OTM 002
COX COMMUNICATION INC	(275)	-	32	PROJ# 169666 COX TRENCHING OTM 006
COX COMMUNICATION INC	(275)	-	28	PROJ# 171104 COX TRENCHING OTM 024
COX COMMUNICATION INC	(270)	-	28	PROJ# 171352 COX TRENCHING JOB 2008-OTM023
COX COMMUNICATION INC	(235)	-	32	PROJ# 170997 COX TRENCHING JOB# 2008-OTM017
COX COMMUNICATION INC	(190)	-	32	PROJ# 170995 COX TRENCHING JOB# 2008-OTM021
COX COMMUNICATION INC	(190)	-	32	PROJ# 171000 COX TRENCHING JOB# 2008-OTM018
COX COMMUNICATION INC	(181)	-	32	PROJ# 169630 COX TRENCHING #24608
COX COMMUNICATION INC	(181)	-	32	PROJ# 169639 COX TRENCHING JOB# 2008-OTM008
COX COMMUNICATION INC	(181)	-	32	PROJ# 169750 COX TRENCHING JOB# 2008-OTM009
COX COMMUNICATION INC	(181)	-	32	PROJ# 169670 COX TRENCHING JOB# 2008-OTM011
COX COMMUNICATION INC	(181)	-	32	PROJ# 169746 COX TRENCHING JOB# 2008-OTM001
COX COMMUNICATION INC	(171)	-	28	PROJ# 169684 COX TRENCHING OTM 007
COX COMMUNICATION INC	(171)	-	28	PROJ# 169694 COX TRENCHING OTM 005
COX COMMUNICATION INC	(171)	-	28	PROJ# 169703 COX TRENCHING OTM 003
COX COMMUNICATION INC	(104)	-	32	PROJ# 169218 COX TRENCHING JOB# 24671
COX COMMUNICATION INC	(104)	-	28	PROJ# 171106 COX TRENCHING OTM 014
COX COMMUNICATION INC	(104)	-	28	PROJ# 171115 COX TRENCHING OTM 012

Applicants with Multiple Deficit Accounts totaling \$10,000 or more⁽¹⁾

As of June 30, 2009⁽²⁾

Applicant Name	Balance Due	Current ⁽³⁾ Period Deposits	Weeks in Deficit	Project Name
COX COMMUNICATION INC.	(204)	-	40	PROJ# 162614 COX'S @ 4668 1/3 ALVARADOCANYON
COX COMMUNICATION SAN DIEGO	(952)	-	104	PROJ# 125624 TORREY PINES UTILITY EASEMENT
COX COMMUNICATION, INC.	(1,901)	-	40	PROJ# 166648 COX TRENCHING JOB# 24663
COX COMMUNICATION, INC.	(959)	-	40	PROJ# 166471 COX TRENCHING JOB# 24713
COX COMMUNICATION, INC.	(104)	-	40	PROJ# 166465 COX TRENCHING JOB# 24619-1
COX COMMUNICATION INC	(995)	-	28	PROJ# 169706 COX #2008 OTMO10
COX COMMUNICATIONS	(10,140)	-	32	PROJ# 170208 COX TRENCHING JOB# 24811
COX COMMUNICATIONS	(2,256)	-	36	PROJ# 168347 COX TRENCHING JOB# 24710
COX COMMUNICATIONS	(1,672)	-	32	PROJ# 170451 COX TRENCHING JOB# 24815
COX COMMUNICATIONS	(1,661)	-	32	PROJ# 170207 COX TRENCHING JOB# 24812
COX COMMUNICATIONS	(1,048)	-	24	PROJ# 170209 COX TRENCHING JOB# 24795
COX COMMUNICATIONS	(602)	-	32	PROJ# 170452 COX TRENCHING JOB# 24853
COX COMMUNICATIONS	(104)	-	28	PROJ# 171391 COX TRENCHING JOB #24855
COX COMMUNICATIONS FACILITIES	(129)	-	148	GRADING FOR COX COMMUNICATIONS/PARKING LOT
COX COMMUNICATIONS INC	(4,462)	-	88	PROJ# 141028 COX TRENCHING AT VIA CAMPO
COX COMMUNICATIONS INC	(4,223)	-	16	PROJ #144563 COX TRENCHING AT RANCHO BERNARDO EAST
COX COMMUNICATIONS INC	(2,729)	-	88	PROJ# 141073 COX TRENCHING AT VIA ESPRILLO
COX COMMUNICATIONS INC	(2,230)	-	16	PROJ# 141065 COX TRENCHING AT RANCHO CARMEL DRIVE
COX COMMUNICATIONS INC	(1,860)	-	88	PROJ# 141075 COX TRENCHING AT RANCHO BERNARDO ROAD
COX COMMUNICATIONS INC	(1,179)	-	64	PROJ# 153372 COX TRENCHING @ @ COPLEY DR
COX COMMUNICATIONS INC	(439)	-	28	PROJ# 171193 COX TRENCHING JOB# 24608
COX COMMUNICATIONS INC	(326)	-	32	PROJ# 153574 COX'S TRENCHING @ FEDERAL BLVD
COX COMMUNICATIONS INC	(195)	-	28	PROJ# 171164 COX'S @ KERNS ST
COX COMMUNICATIONS INC	(169)	-	28	PROJ# 171671 COX TRENCHING JOB# 2008-OTM 029
COX COMMUNICATIONS INC	(167)	-	28	PROJ# 171675 COX TRENCHING JOB# 2008-OTM 029
COX COMMUNICATIONS INC	(153)	-	28	PROJ# 171086 COX & CUSTOMHOUSE PLAZA
COX COMMUNICATIONS INC	(153)	-	28	PROJ# 171168 COX & KERNS ST
COX COMMUNICATIONS INC	(132)	-	24	PROJ# 171049 COX TRENCHING JOB 2008 - OTM025
COX COMMUNICATIONS INC	(104)	-	28	PROJ# 171200 COX TRENCHING JOB 2008-OTM015
COX COMMUNICATIONS INC	(104)	-	28	PROJ# 171173 COX'S @ EUCLID AV
COX COMMUNICATIONS INC	(67)	-	32	PROJ# 153577 COX'S TRENCHING @ FALCON STREET
COX COMMUNICATIONS INC.	(5,108)	-	20	PROJ# 155772 COX TRENCHING @ RANCHO BERNARDO
COX COMMUNICATIONS INC.	(2,049)	-	48	PROJ# 159626 COX TRENCHING @ CARMEL MTN RD
COX COMMUNICATIONS INC.	(88)	-	16	PROJ# 159965 COX TRENCHING @ JUAN ST.
COX COMMUNICATIONS, INC	(131)	-	28	PROJ# 167845 COX TRENCHING JOB# 24087-1
Subtotal	(56,502)	-		
CROWN CASTLE GT COMPANY, LLC	(10,400)	-	32	PROJ# 117433 CROWN CASTLE DEL MAR
CROWN CASTLE GT COMPANY, LLC	(2,431)	-	32	PROJ# 105832 CROWN CASTLE MISSION GORGE
CROWN CASTLE GT COMPANY, LLC	(42)	-	4	PROJ# 101765 CROWN CASTLE PENASQUITOS
Subtotal	(12,873)	-		
FRANCISCO MENDIOLA	(6,889)	-	268	PTS. #11718 HILLSIDE KNOLL GRADING PLANS
FRANISCO MENDIOLA	(10,468)	-	72	PROJ# 131779 MENDIOLA CDP
Subtotal	(17,357)	-		
H. G. FENTONTIES	(3,157)	-	8	PROJ# 177983 AQUATERA APTS - PDP
H.G. FENTON PROPERTY COMPANY	(16,131)	-	36	PROJ #124604 MURRAY CANYON
Subtotal	(19,288)	-		
JANAY KRUGER	(7,127)	-	100	PTS #53779 DECA MAP / IMP
JANAY KRUGER	(2,383)	-	172	PTS#77883 ECHELON
JANAY KRUGER	(1,707)	-	40	PROJ# 155174 GOLDEN TRIANGL
JANAY KRUGER	(647)	-	32	PROJ# 168367 5030 COLLEGE SDP
JANAY KRUGER	(50)	-	80	PROJ# 130833 WINE STYLES
JANAY KRUGER	(35)	-	24	PROJ# 169987 MONARCH DIA
Subtotal	(11,948)	-		
MC MILLIN COMMUNITIES INC.	(11,653)	-	32	NTC UNIT NO. 6 SDP
MC MILLIN NTC, LLC	(38,641)	-	32	PTS #4465 NTC
Subtotal	(50,294)	-		
KFC CORPORATION	(3,168)	-	48	PROJ# 161031 KFC UNIVERSITY SQUARE
KFC OF AMERICA, INC	(10,111)	-	328	KFC & A/W RESTAURANT
Subtotal	(13,278)	-		
NEXTG NETWORK	(2,603)	-	40	PTS# 99193 NEXTG
NEXTG NETWORK	(3,370)	-	152	PTS# 98866 NEXTG SD NODES ROW
NEXTG NETWORK BALBOA PRK NODES	(194)	-	28	PROJ# 154519 NEXTG BALBOA PARK NODES CONDUIT
NEXTG NETWORK, INC	(262)	-	16	PROJ# 154363 NEXTG CYPRESS CANYON RD CONDUIT
NEXTG NETWORKS, INC	(2,208)	2,400	4	PROJ# 155070 NEXTG POWAY RD CONDUIT
NEXTG NETWORKS, INC.	(666)	-	36	PROJ# 158874 NEXTG POWAY & SPRINGHURST
NEXTG NETWORKS	(518)	-	176	PTS #74549 NEXT 6
NEXTG NETWORKS	(1,283)	(2,000)	4	PROJ# 182347 NEXTG SATURN BL & ELM AVEPI
NEXTG NETWORKS	(547)	(2,000)	4	PROJ# 182524 NEXTG CBM1001-6MSD008C
NEXTG NETWORKS	(503)	-	12	PROJ# 178143 NEXT G REO & RANCHO HILLSPI
NEXTG NETWORKS	(128)	(2,000)	4	PROJ# 182337 NEXTG ELDER AVE 14TH ST PI
NEXTG NETWORKS	(123)	(2,000)	4	PROJ# 182324 DEL SOL & DEL SUR PI
NEXTG NETWORKS OF CA, INC	(81)	-	4	PROJ# 188866 NEXTG CBM1001CA-UMSD011 PI
NEXTG NETWORKS, INC.	(230)	-	32	PTS #164825 NEXTG ABRA & ALONDRA DR
Subtotal	(12,717)	(5,600)		

Applicants with Multiple Deficit Accounts totaling \$10,000 or more⁽¹⁾

As of June 30, 2009⁽²⁾

Applicant Name	Balance Due	Current ⁽³⁾ Period Deposits	Weeks in Deficit	Project Name	
PACIFIC BELL	(1,864)	-	40	PROJ# 166740	AT&T TRENCHING JOB# 6686208
PACIFIC BELL	(1,132)	-	48	PROJ# 159567	AT&T TRENCHING - 6575609 @ CARDINAL RD
PACIFIC BELL	(549)	-	48	PROJ# 159569	AT&T TRENCHING - 6575254 @ LEBON DR.
PACIFIC BELL	(477)	-	48	PROJ# 159571	AT&T TRENCHING - 6397251 @ FRIARS RD
PACIFIC BELL	(472)	-	40	PROJ# 166677	AT&T TRENCHING JOB# 6609187
PACIFIC BELL	(381)	-	40	PROJ# 166733	AT&T TRENCHING JOB# 6695204
PACIFIC BELL	(268)	-	48	PROJ# 159489	AT&T TRENCHING - 6536130 @ 28TH ST.
PACIFIC BELL	(264)	-	48	PROJ# 159457	AT&T TRENCHING - 6484016 @ BIOLA AVE.
PACIFIC BELL	(249)	-	40	PROJ# 166723	AT&T TRENCHING JOB# 7005615
PACIFIC BELL	(239)	-	48	PROJ# 159492	AT&T TRENCHING - 6600249 @ PEARL
PACIFIC BELL	(161)	-	48	PROJ# 159573	AT&T TRENCHING - 6255312 @ MARKET ST.
PACIFIC BELL	(134)	-	40	PROJ# 167578	AT&T TRENCHING #7017363
PACIFIC BELL	(104)	-	48	PROJ# 159426	AT&T TRENCHING - 6596593 @ MIDWAY ST.
PACIFIC BELL	(104)	-	48	PROJ# 159459	AT&T TRENCHING - 6585488 @ LAUREL ST.
PACIFIC BELL	(104)	-	48	PROJ# 159447	AT&T TRENCHING - 6650199 @ CORONADO AVE
PACIFIC BELL	(104)	-	48	PROJ# 159482	AT&T TRENCHING - 6669758 @ 8TH AVE
PACIFIC BELL - DBA AT&T	(122)	-	44	PROJ# 163618	AT&T TRENCHING ORANGE
PACIFIC BELL - DBA AT&T CA	(509)	-	44	PROJ# 163636	AT&T TRENCHING NORFOLK
PACIFIC BELL - DBA AT&T CA	(425)	-	44	PROJ# 163638	AT&T TRENCHING DENNERY RD
PACIFIC BELL - DBA AT&T CA	(261)	-	44	PROJ# 164021	AT&T TRENCHING GRAVILLA ST.
PACIFIC BELL - DBA AT&T CA	(185)	-	44	PROJ# 163535	AT&T TRENCHING - 6647757
PACIFIC BELL - DBA AT&T CA	(158)	-	44	PROJ# 163622	AT&T TRENCHING BROADWAY
PACIFIC BELL - DBA AT&T CA	(158)	-	44	PROJ# 163626	AT&T TRENCHING DWIGHT
PACIFIC BELL - DBA AT&T CA	(158)	-	44	PROJ# 163630	AT&T TRENCHING MADISON
PACIFIC BELL - DBA AT&T CA	(158)	-	44	PROJ# 163633	AT&T TRENCHING MADISON
PACIFIC BELL - DBA: AT&T CALIFOR	(446)	-	48	PROJ# 159778	AT&T TRENCHING - 6551572 @ MUIRLANDS DR.
PACIFIC BELL - DBA: AT&T CALIFOR	(240)	-	48	PROJ# 159661	AT&T TRENCHING - 6536130 @ 26TH ST.
PACIFIC BELL - DBA: AT&T CALIFOR	(202)	-	48	PROJ# 159786	AT&T TRENCHING - 6575391 @ NORTHROP DR.
PACIFIC BELL - DBA: AT&T CALIFOR	(105)	-	48	PROJ# 159776	AT&T TRENCHING - 6665344 @ "C" ST.
PACIFIC BELL DBA AT&T	(1,656)	-	56	PROJ# 156493	AT&T TRENCHING @ EUCLID 6255211
PACIFIC BELL DBA AT&T	(1,473)	-	56	PROJ# 155998	AT&T TRENCHING 5926036
PACIFIC BELL DBA AT&T	(1,164)	-	56	PROJ# 156491	AT&T TRENCHING @ VILLAGE CENTER LOOP
PACIFIC BELL DBA AT&T	(1,064)	-	56	PROJ# 162416	AT&T TRENCHING - 6573725
PACIFIC BELL DBA AT&T	(925)	-	48	PROJ# 159343	AT&T TRENCHING - 6553648 @ GOLFCREST DR.
PACIFIC BELL DBA AT&T	(843)	-	56	PROJ# 155802	AT&T TRENCHING 6383597
PACIFIC BELL DBA AT&T	(793)	-	56	PROJ# 156007	AT&T TRENCHING 5935502
PACIFIC BELL DBA AT&T	(786)	-	56	PROJ# 156482	AT&T TRENCHING @ THUNDERHEAD
PACIFIC BELL DBA AT&T	(784)	-	56	PROJ# 156488	AT&T TRENCHING @ PASEO
PACIFIC BELL DBA AT&T	(636)	-	56	PROJ# 156595	AT&T TRENCHING @ EVENING CREEK DR.
PACIFIC BELL DBA AT&T	(556)	-	56	PROJ# 156486	AT&T TRENCHING @ CALLE NEIL
PACIFIC BELL DBA AT&T	(483)	-	56	PROJ# 157161	AT&T TRENCHING @ PASEO MONTRIL
PACIFIC BELL DBA AT&T	(475)	-	56	PROJ# 156596	AT&T TRENCHING @ VILLA LA JOLLA DR.
PACIFIC BELL DBA AT&T	(409)	-	64	PROJ# 152646	AT&T TRENCHING JOB #6436311
PACIFIC BELL DBA AT&T	(329)	-	56	PROJ# 156485	AT&T TRENCHING @ VIA BANCO
PACIFIC BELL DBA AT&T	(314)	-	56	PROJ# 156584	AT&T TRENCHING @ LA DUENA WY & OROZCO RD
PACIFIC BELL DBA AT&T	(313)	-	56	PROJ# 156708	AT&T TRENCHING - 6411652
PACIFIC BELL DBA AT&T	(301)	-	56	PROJ# 156590	AT&T TRENCHING @ DUNHAM WY
PACIFIC BELL DBA AT&T	(293)	-	56	PROJ# 156129	AT&T TRENCHING KELTON 6536080
PACIFIC BELL DBA AT&T	(287)	-	56	PROJ# 156484	AT&T TRENCHING @ DRAPER
PACIFIC BELL DBA AT&T	(261)	-	56	PROJ# 157148	AT&T TRENCHING - 5923255 WILLAMETTE AVE
PACIFIC BELL DBA AT&T	(240)	-	56	PROJ# 157154	AT&T TRENCHING @ GENESEE AVE
PACIFIC BELL DBA AT&T	(240)	-	56	PROJ# 156115	AT&T TRENCHING GUNN
PACIFIC BELL DBA AT&T	(233)	-	56	PROJ# 156699	AT&T TRENCHING - 6587691
PACIFIC BELL DBA AT&T	(231)	-	56	PROJ# 157145	AT&T TRENCHING @ CARMEL CANYON RD
PACIFIC BELL DBA AT&T	(221)	-	56	PROJ# 155849	AT&T TRENCHING 6588982
PACIFIC BELL DBA AT&T	(220)	-	56	PROJ# 156487	AT&T TRENCHING @ KADOTA
PACIFIC BELL DBA AT&T	(219)	-	56	PROJ# 155994	AT&T TRENCHING 6395222
PACIFIC BELL DBA AT&T	(215)	-	56	PROJ# 156592	AT&T TRENCHING @ 54TH. ST
PACIFIC BELL DBA AT&T	(207)	-	56	PROJ# 155801	AT&T TRENCHING 5923640
PACIFIC BELL DBA AT&T	(170)	-	56	PROJ# 155805	AT&T TRENCHING 6578308
PACIFIC BELL DBA AT&T	(165)	-	56	PROJ# 157177	AT&T TRENCHING @ WEDGEWOOD
PACIFIC BELL DBA AT&T	(155)	-	56	PROJ# 157146	AT&T TRENCHING @ CLOUDVIEW ST.
PACIFIC BELL DBA AT&T	(155)	-	56	PROJ# 155827	AT&T TRENCHING 6556314
PACIFIC BELL DBA AT&T	(153)	-	48	PROJ# 162420	AT&T TRENCHING - 66665291
PACIFIC BELL DBA AT&T	(103)	-	56	PROJ# 155803	AT&T TRENCHING 6561286
PACIFIC BELL DBA AT&T	(51)	-	56	PROJ# 157158	AT&T TRENCHING CALLE VAQUERO M2(26)65634
PACIFIC BELL DBA AT&T CA	(3,523)	-	52	PROJ# 157696	AT&T TRENCHING - 6592150
PACIFIC BELL DBA AT&T CA	(1,682)	-	52	PROJ# 157464	AT&T TRENCHING - 6390740
PACIFIC BELL DBA AT&T CA	(1,367)	-	52	PROJ# 158231	AT&T TRENCHING 6554198
PACIFIC BELL DBA AT&T CA	(1,358)	-	48	PROJ# 162434	AT&T TRENCHING - 6587742
PACIFIC BELL DBA AT&T CA	(1,200)	-	60	PROJ# 155314	AT&T TRENCHING EUCLID 6255359
PACIFIC BELL DBA AT&T CA	(1,118)	-	52	PROJ# 158230	AT&T TRENCHING 6018615
PACIFIC BELL DBA AT&T CA	(1,104)	-	52	PROJ# 158132	AT&T TRENCHING 6556925
PACIFIC BELL DBA AT&T CA	(949)	-	52	PROJ# 157695	AT&T TRENCHING PROJECT # 6573989
PACIFIC BELL DBA AT&T CA	(930)	-	48	PROJ# 162876	AT&T TRENCHING - 6646232
PACIFIC BELL DBA AT&T CA	(910)	-	48	PROJ# 162450	AT&T TRENCHING - 6670006
PACIFIC BELL DBA AT&T CA	(890)	-	52	PROJ# 158228	AT&T TRENCHING 6606970
PACIFIC BELL DBA AT&T CA	(886)	-	48	PROJ# 162875	AT&T TRENCHING - 6040395
PACIFIC BELL DBA AT&T CA	(839)	-	48	PROJ# 162205	AT&T TRENCHING - 6536140
PACIFIC BELL DBA AT&T CA	(625)	-	48	PROJ# 162201	AT&T TRENCHING - 6559455
PACIFIC BELL DBA AT&T CA	(598)	-	48	PROJ# 162882	AT&T TRENCHING - 6670019
PACIFIC BELL DBA AT&T CA	(581)	-	56	PROJ# 155794	AT&T TRENCHING 6255200
PACIFIC BELL DBA AT&T CA	(575)	-	56	PROJ# 155788	AT&T TRENCHING WESTONHILL
PACIFIC BELL DBA AT&T CA	(517)	-	60	PROJ# 155208	AT&T TRENCHING PALM

Applicants with Multiple Deficit Accounts totaling \$10,000 or more⁽¹⁾

As of June 30, 2009⁽²⁾

Applicant Name	Balance Due	Current ⁽³⁾ Period Deposits	Weeks in Deficit		Project Name
PACIFIC BELL DBA AT&T CA	(506)	-	52	PROJ# 157587	AT&T TRENCHING PROJECT # 6561010
PACIFIC BELL DBA AT&T CA	(492)	-	52	PROJ# 155783	AT&T TRENCHING GOLFCREST
PACIFIC BELL DBA AT&T CA	(451)	-	48	PROJ# 157461	AT&T TRENCHING FOR JOB 6559470
PACIFIC BELL DBA AT&T CA	(399)	-	60	PROJ# 155322	AT&T TRENCHING MILTON 6537566-2
PACIFIC BELL DBA AT&T CA	(391)	-	48	PROJ# 162538	AT&T TRENCHING - 6644819
PACIFIC BELL DBA AT&T CA	(386)	-	60	PROJ# 155315	AT&T TRENCHING ROLAND 6556232
PACIFIC BELL DBA AT&T CA	(371)	-	52	PROJ# 158145	AT&T TRENCHING 158141
PACIFIC BELL DBA AT&T CA	(366)	-	48	PROJ# 162885	AT&T TRENCHING - 6665345
PACIFIC BELL DBA AT&T CA	(361)	-	52	PROJ# 158147	AT&T TRENCHING 158147
PACIFIC BELL DBA AT&T CA	(359)	-	48	PROJ# 162445	AT&T TRENCHING - 6647431
PACIFIC BELL DBA AT&T CA	(357)	-	60	PROJ# 155335	AT&T TRENCHING 6215478
PACIFIC BELL DBA AT&T CA	(357)	-	48	PROJ# 162030	AT&T TRENCHING @ REGENTS
PACIFIC BELL DBA AT&T CA	(340)	-	48	PROJ# 162423	AT&T TRENCHING -6646142-2
PACIFIC BELL DBA AT&T CA	(312)	-	52	PROJ# 157485	AT&T TRENCHING FOR JOB 6578207
PACIFIC BELL DBA AT&T CA	(309)	-	60	PROJ# 155307	AT&T TRENCHING 6396565
PACIFIC BELL DBA AT&T CA	(308)	-	56	PROJ# 156671	AT&T TRENCHING - 6390870
PACIFIC BELL DBA AT&T CA	(304)	-	44	PROJ# 157456	AT&T TRENCHING FOR JOB 6587829
PACIFIC BELL DBA AT&T CA	(283)	-	56	PROJ# 155311	AT&T TRENCHING 6390672
PACIFIC BELL DBA AT&T CA	(279)	-	48	PROJ# 162424	AT&T TRENCHING - 6040643-2
PACIFIC BELL DBA AT&T CA	(266)	-	48	PROJ# 162535	AT&T TRENCHING - 6536113
PACIFIC BELL DBA AT&T CA	(266)	-	48	PROJ# 162440	AT&T TRENCHING - 6666237
PACIFIC BELL DBA AT&T CA	(266)	-	48	PROJ# 162458	AT&T TRENCHING - 6665351
PACIFIC BELL DBA AT&T CA	(265)	-	60	PROJ# 155339	AT&T TRENCHING 6536145
PACIFIC BELL DBA AT&T CA	(257)	-	52	PROJ# 158244	AT&T TRENCHING 6586340
PACIFIC BELL DBA AT&T CA	(257)	-	52	PROJ# 158239	AT&T TRENCHING 6552918
PACIFIC BELL DBA AT&T CA	(255)	-	52	PROJ# 158115	AT&T TRENCHING - 6559455
PACIFIC BELL DBA AT&T CA	(248)	-	48	PROJ# 162185	AT&T TRENCHING -6413549
PACIFIC BELL DBA AT&T CA	(241)	-	56	PROJ# 155784	AT&T TRENCHING @ COLIMA DORADO DR.
PACIFIC BELL DBA AT&T CA	(238)	-	48	PROJ# 162427	AT&T TRENCHING - 6669970
PACIFIC BELL DBA AT&T CA	(231)	-	60	PROJ# 155321	AT&T TRENCHING MILTON 6537566
PACIFIC BELL DBA AT&T CA	(220)	-	48	PROJ# 162429	AT&T TRENCHING - 6653628
PACIFIC BELL DBA AT&T CA	(220)	-	52	PROJ# 158117	AT&T TRENCHING - 6411935
PACIFIC BELL DBA AT&T CA	(212)	-	48	PROJ# 162186	AT&T TRENCHING - 6553635
PACIFIC BELL DBA AT&T CA	(207)	-	56	PROJ# 155798	AT&T TRENCHING 6574083
PACIFIC BELL DBA AT&T CA	(206)	-	52	PROJ# 157458	AT&T TRENCHING FOR JOB 6387427
PACIFIC BELL DBA AT&T CA	(195)	-	32	PROJ# 157585	AT&T TRENCHING JOB# 6393905
PACIFIC BELL DBA AT&T CA	(191)	-	56	PROJ# 156494	AT&T TRENCHING 6517867
PACIFIC BELL DBA AT&T CA	(174)	-	56	PROJ# 155323	AT&T TRENCHING 6537574
PACIFIC BELL DBA AT&T CA	(172)	-	56	PROJ# 155312	AT&T TRENCHING 6591257
PACIFIC BELL DBA AT&T CA	(172)	-	60	PROJ# 155333	AT&T TRENCHING 6212394
PACIFIC BELL DBA AT&T CA	(171)	-	48	PROJ# 157449	NEXTG POWAY NODES
PACIFIC BELL DBA AT&T CA	(171)	-	48	PROJ# 157583	AT&T TRENCHING JOB# 6534403
PACIFIC BELL DBA AT&T CA	(170)	-	56	PROJ# 155791	AT&T TRENCHING @ RICHARD
PACIFIC BELL DBA AT&T CA	(169)	-	52	PROJ# 157589	AT&T TRENCHING PROJECT # 6514874
PACIFIC BELL DBA AT&T CA	(167)	-	52	PROJ# 157469	AT&T TRENCHING - 6533183
PACIFIC BELL DBA AT&T CA	(166)	-	56	PROJ# 156490	AT&T TRENCHING - 6521841
PACIFIC BELL DBA AT&T CA	(166)	-	56	PROJ# 156685	AT&T TRENCHING - 6551173
PACIFIC BELL DBA AT&T CA	(158)	-	48	PROJ# 162022	AT&T TRENCHING @ MANZANARES
PACIFIC BELL DBA AT&T CA	(158)	-	48	PROJ# 162028	AT&T TRENCHING@ WINNETT
PACIFIC BELL DBA AT&T CA	(158)	-	48	PROJ# 162024	AT&T TRENCHING @ FLAX
PACIFIC BELL DBA AT&T CA	(158)	-	48	PROJ# 162027	AT&T TRENCHING @ RADIO
PACIFIC BELL DBA AT&T CA	(158)	-	48	PROJ# 162031	AT&T TRENCHING @ DEL SOL
PACIFIC BELL DBA AT&T CA	(158)	-	48	PROJ# 162879	AT&T TRENCHING - 6592090
PACIFIC BELL DBA AT&T CA	(157)	-	60	PROJ# 155320	AT&T TRENCHING SAN VICENT6564802
PACIFIC BELL DBA AT&T CA	(156)	-	60	PROJ# 155210	AT&T TRENCHING EAST LAKE 6566740
PACIFIC BELL DBA AT&T CA	(156)	-	48	PROJ# 162425	AT&T TRENCHING - 6681080
PACIFIC BELL DBA AT&T CA	(156)	-	48	PROJ# 162421	AT&T TRENCHING - 6641785
PACIFIC BELL DBA AT&T CA	(156)	-	48	PROJ# 162422	AT&T TRENCHING - 6059873-3
PACIFIC BELL DBA AT&T CA	(153)	-	52	PROJ# 158232	AT&T TRENCHING 6382039
PACIFIC BELL DBA AT&T CA	(153)	-	52	PROJ# 158229	AT&T TRENCHING 6384321
PACIFIC BELL DBA AT&T CA	(153)	-	48	PROJ# 162446	AT&T TRENCHING - 6665338
PACIFIC BELL DBA AT&T CA	(153)	-	48	PROJ# 162438	AT&T TRENCHING - 6556937
PACIFIC BELL DBA AT&T CA	(143)	-	52	PROJ# 157466	AT&T TRENCHING FOR JOB 6578161
PACIFIC BELL DBA AT&T CA	(114)	-	48	PROJ# 157455	AT&T TRENCHING FOR JOB 6561296
PACIFIC BELL DBA AT&T CA	(111)	-	32	PROJ# 157482	AT&T TRENCHING FOR JOB 6449474
PACIFIC BELL DBA AT&T CA	(104)	-	48	PROJ# 155795	AT&T TRENCHING 6561285
PACIFIC BELL DBA AT&T CA	(104)	-	48	PROJ# 156497	AT&T TRENCHING 6520531
PACIFIC BELL DBA AT&T CA	(104)	-	48	PROJ# 157584	AT&T TRENCHING JOB# 6445329
PACIFIC BELL DBA AT&T CA	(102)	-	60	PROJ# 155328	AT&T TRENCHING 6393702
PACIFIC BELL DBA AT&T CA	(102)	-	52	PROJ# 157465	AT&T TRENCHING FOR JOB 6449704
PACIFIC BELL DBA AT&T CA	(99)	-	56	PROJ# 156668	AT&T TRENCHING - 6040549
PACIFIC BELL DBA AT&T CA	(97)	-	52	PROJ# 157690	AT&T TRENCHING PROJECT # 5935441
PACIFIC BELL DBA AT&T CA	(97)	-	60	PROJ# 155331	AT&T TRENCHING 6378706
PACIFIC BELL DBA AT&T CA	(79)	-	52	PROJ# 158248	AT&T TRENCHING 6574060
PACIFIC BELL DBA AT&T CA	(54)	-	48	PROJ# 162881	AT&T TRENCHING - 6644539
PACIFIC BELL DBA AT&T CAL	(273)	-	48	PROJ# 162230	AT&T TRENCHING @ MARKET ST
PACIFIC BELL DBA AT&T CAL	(269)	-	48	PROJ# 162228	AT&T TRENCHING @ 33RD ST.
PACIFIC BELL DBA AT&T CAL	(245)	-	48	PROJ# 162426	AT&T TRENCHING - 6561295
PACIFIC BELL DBA AT&T CAL	(158)	-	48	PROJ# 162223	AT&T TRENCHING 6TH AVE 6650698
PACIFIC BELL DBA AT&T CAL	(158)	-	48	PROJ# 162232	AT&T TRENCHING @ 17TH ST
PACIFIC BELL DBA AT&T CAL	(158)	-	48	PROJ# 162225	AT&T TRENCHING @ PICCARD AVE
PACIFIC BELL DBA AT&T CAL	(153)	-	48	PROJ# 162413	AT&T TRENCHING - 6536145
PACIFIC BELL DBA AT&T CAL	(153)	-	48	PROJ# 162414	AT&T TRENCHING - 6546906
PACIFIC BELL DBA AT&T CALI	(212)	-	48	PROJ# 160737	AT&T TRENCHING - 6413340

Applicants with Multiple Deficit Accounts totaling \$10,000 or more⁽¹⁾

As of June 30, 2009⁽²⁾

Applicant Name	Balance Due	Current ⁽³⁾ Period Deposits	Weeks in Deficit		Project Name
PACIFIC BELL DBA AT&T CALI.	(158)	-	44	PROJ# 164351	AT&T TRENCHING 6565088
PACIFIC BELL DBA AT&T CALI.	(153)	-	44	PROJ# 164334	AT&T TRENCHING 6673352
PACIFIC BELL DBA AT&T CALI.	(104)	-	44	PROJ# 162479	AT&T TRENCHING 6255277
PACIFIC BELL DBA AT&T CALI.	(104)	-	44	PROJ# 163528	AT&T TRENCHING - 6534854
PACIFIC BELL DBA AT&T CALI.	(54)	-	44	PROJ# 164343	AT&T TRENCHING 6686042
PACIFIC BELL DBA AT&T CALIF.	(104)	-	44	PROJ# 164385	AT&T TRENCHING 6513547
PACIFIC BELL DBA:AT&T	(2,490)	-	48	PROJ# 147519	AT&T TRENCHING @ POMERADO RD
PACIFIC BELL DBA:AT&T	(480)	-	60	PROJ# 147536	AT&T TRENCHING @ SORRENTO VLY BL
PACIFIC BELL DBA:AT&T	(204)	-	36	PROJ# 149815	COX TRENCHING @ CHESAPEAKDR
PACIFIC BELL DBA:AT&T	(35)	-	48	PROJ# 149867	COX TRENCHING @ UNIVERSTYAVE
PACIFIC BELL- DBA:AT&T CALIFORNI	(1,886)	-	48	PROJ# 159781	AT&T TRENCHING - 6587722 @ CAMINO TRANQUILLO
PACIFIC BELL- DBA:AT&T CALIFORNI	(632)	-	48	PROJ# 159658	AT&T TRENCHING @ SO.VIEW
PACIFIC BELL- DBA:AT&T CALIFORNI	(601)	-	48	PROJ# 159785	AT&T TRENCHING - 6588454 @ CORONADO AVE
PACIFIC BELL- DBA:AT&T CALIFORNI	(199)	-	48	PROJ# 159659	AT&T TRENCHING @ TEXAS ST
PACIFIC BELL- DBA:AT&T CALIFORNI	(158)	-	48	PROJ# 159663	AT&T TRENCHING - 6431934 @ TALBOT ST.
PACIFIC BELL- DBA:AT&T CALIFORNI	(158)	-	48	PROJ# 159662	AT&T TRENCHING - 6661966 @ COMPLEX DR.
PACIFIC BELL- DBA:AT&T CALIFORNI	(158)	-	48	PROJ# 159660	AT&T TRENCHING @ SAIPAN
PACIFIC BELL TEL DBA AT & T	(603)	-	60	PROJ# 154278	AT&T TRENCHING JOB 6410425
PACIFIC BELL TEL DBA AT & T	(346)	-	60	PROJ# 154282	AT&T TRENCHING JOB 6587074
PACIFIC BELL TEL DBA AT & T	(285)	-	60	PROJ# 154279	AT&T TRENCHING JOB 6537558
PACIFIC BELL TEL DBA AT & T	(285)	-	60	PROJ# 154289	AT&T TRENCHING JOB 6561284
PACIFIC BELL TEL DBA AT & T	(218)	-	60	PROJ# 154286	AT&T TRENCHING JOB 6534462
PACIFIC BELL TEL DBA AT & T	(151)	-	60	PROJ# 154287	AT&T TRENCHING JOB 6445449
PACIFIC BELL TELEPHON	(971)	-	44	PROJ# 164605	AT&T TRENCHING JOB#6681573
PACIFIC BELL TELEPHON	(65)	-	44	PROJ# 164604	AT&T TRENCHING JOB#7017789
PACIFIC BELL TELEPHONE	(4,028)	-	96	PROJ# 137466	AT&T TRENCHING AT MERCY RD
PACIFIC BELL TELEPHONE	(3,757)	-	80	PROJ# 145909	AT&T TRENCHING AT POBLADO ROAD
PACIFIC BELL TELEPHONE	(3,587)	-	40	PROJ# 165991	AT&T TRENCHING #6687917
PACIFIC BELL TELEPHONE	(3,397)	-	72	PTS #147549	AT&T TRENCHING AT HIGHLAND RANCH
PACIFIC BELL TELEPHONE	(3,356)	-	96	PROJ# 137477	AT&T TRENCHING AT AT BEYER BLVD
PACIFIC BELL TELEPHONE	(3,260)	-	96	PROJ# 137227	AT&T TRENCHING AT POMERADO RD
PACIFIC BELL TELEPHONE	(3,056)	-	76	PROJ# 147925	AT&T TRENCHING @ NUTMEG ST
PACIFIC BELL TELEPHONE	(2,804)	-	76	PROJ# 147537	AT&T TRENCHING @ POMERADO
PACIFIC BELL TELEPHONE	(2,733)	-	96	PROJ# 137242	AT&T TRENCHING AT MALER RD
PACIFIC BELL TELEPHONE	(2,588)	-	76	PROJ# 147542	AT&T TRENCHING @ HIGHLAND
PACIFIC BELL TELEPHONE	(2,579)	-	92	PROJ# 136498	AT&T TRENCHING AT BERNARDO HGTS
PACIFIC BELL TELEPHONE	(2,348)	-	92	PROJ# 136179	A&T TRENCHING AT REPECHO DRIVE
PACIFIC BELL TELEPHONE	(2,273)	-	80	PROJ# 145917	AT&T TRENCHING AT FAIRHOPE COURT
PACIFIC BELL TELEPHONE	(2,264)	-	96	PROJ# 137240	AT&T TRENCHING AT OVIEDO
PACIFIC BELL TELEPHONE	(2,244)	-	88	PROJ# 139857	AT&T TRENCHING @ PASEO MONTALBAN
PACIFIC BELL TELEPHONE	(2,224)	-	84	PROJ# 142354	AT & T TRENCHING AT INNOVATION DRIVE
PACIFIC BELL TELEPHONE	(2,224)	-	88	PROJ# 139790	AT&T TRENCHING AT CARROLL CANYON
PACIFIC BELL TELEPHONE	(2,217)	-	80	PROJ# 145906	AT&T TRENCHING AT POMERADO ROAD
PACIFIC BELL TELEPHONE	(2,126)	-	80	PROJ# 145912	AT&T TRENCHING AT TORREY RIDGE ROAD
PACIFIC BELL TELEPHONE	(2,066)	-	88	PROJ# 139920	AT&T TRENCHING @ WILLOW ROAD
PACIFIC BELL TELEPHONE	(2,053)	-	60	PROJ# 130465	AT&T TRENCHING @ SHARON PLACE
PACIFIC BELL TELEPHONE	(1,976)	-	76	PROJ# 147570	AT&T TRENCH @ 3604 BEYER BLVD
PACIFIC BELL TELEPHONE	(1,961)	-	84	PROJ# 142343	AT & T TRENCHING AT PARK VILLAGE
PACIFIC BELL TELEPHONE	(1,948)	-	76	PROJ# 147587	AT&T @ BERNARDO OAKS DRIVE
PACIFIC BELL TELEPHONE	(1,917)	-	96	PROJ# 137239	AT&T TRENCHING AT SUNDANCE AVE
PACIFIC BELL TELEPHONE	(1,914)	-	96	PROJ# 137222	AT&T TRENCHING AT WESTONHILL DR.
PACIFIC BELL TELEPHONE	(1,900)	-	96	PROJ# 137743	AT&T TRENCHING @ ADOLPHIA ST
PACIFIC BELL TELEPHONE	(1,874)	-	96	PROJ# 137244	AT&T TRENCHING AT AVE CORDILLERA
PACIFIC BELL TELEPHONE	(1,846)	-	76	PROJ# 147588	AT&T @ ADOBE BLUFFS DRIVE
PACIFIC BELL TELEPHONE	(1,819)	-	92	PROJ# 139215	AT&T TRENCHING AT BERNARDO CENTER
PACIFIC BELL TELEPHONE	(1,766)	-	76	PROJ# 147584	AT&T @ BERNARDO CENTER ROAD
PACIFIC BELL TELEPHONE	(1,748)	-	84	PROJ# 142335	AT & T TRENCHING AT KEATS STREET
PACIFIC BELL TELEPHONE	(1,731)	-	84	PROJ #141984	AT & T TRENCHING AT COTTONWOOD
PACIFIC BELL TELEPHONE	(1,705)	-	92	PROJ# 139877	AT&T TRENCHING @ DEER FLOWER ROAD
PACIFIC BELL TELEPHONE	(1,631)	-	96	PROJ# 137243	AT&T TRENCHING AT PLAZA DOLORES
PACIFIC BELL TELEPHONE	(1,630)	-	96	PROJ# 137638	AT&T TRENCHING @ SCRIPPS POWAY
PACIFIC BELL TELEPHONE	(1,629)	-	84	PROJ #142442	AT & T TRENCHING AT PIPILO
PACIFIC BELL TELEPHONE	(1,628)	-	100	PROJ# 130463	AT&T TRENCHING @ BERNABE
PACIFIC BELL TELEPHONE	(1,617)	-	96	PROJ# 137225	AT&T TRENCHING AT WEST BERNARDO DR
PACIFIC BELL TELEPHONE	(1,559)	-	96	PROJ# 137231	AT&T TRENCHING AT OLMEDA WAY
PACIFIC BELL TELEPHONE	(1,550)	-	80	PROJ# 146202	AT&T TRENCHING AT PASEO LUCIDO
PACIFIC BELL TELEPHONE	(1,531)	-	96	PROJ# 137493	AT&T TRENCHING AT SAN YSIDRO BLVD
PACIFIC BELL TELEPHONE	(1,522)	-	96	PROJ# 137359	AT&T TRENCHING AT UNION ST
PACIFIC BELL TELEPHONE	(1,515)	-	92	PROJ# 138113	AT&T TRENCHING @DARKWOOD RD
PACIFIC BELL TELEPHONE	(1,493)	-	84	PROJ# 142336	AT & T TRENCHING AT REGENTS ROAD
PACIFIC BELL TELEPHONE	(1,460)	-	96	PROJ# 137753	AT&T TRENCHING @ BEYER BLVD
PACIFIC BELL TELEPHONE	(1,457)	-	92	PROJ# 137483	AT&T TRENCHING @WESTONHILL DR
PACIFIC BELL TELEPHONE	(1,435)	-	80	PROJ #145705	AT&T TRENCHING AT LYTTON STREET
PACIFIC BELL TELEPHONE	(1,378)	-	88	PROJ# 139898	AT&T TRENCHING @ BLK MTN RANCH
PACIFIC BELL TELEPHONE	(1,321)	-	92	PROJ# 139387	AT&T TRENCHING AT BEYER BLVD.
PACIFIC BELL TELEPHONE	(1,287)	-	56	PROJ# 147613	AT&T TRENCHING @ FLOREY
PACIFIC BELL TELEPHONE	(1,275)	-	80	PROJ #142934	AT&T TRENCHING AT HYATT STREET
PACIFIC BELL TELEPHONE	(1,219)	-	64	PROJ# 153077	AT&T TRENCHING FOR JOB# 6397554
PACIFIC BELL TELEPHONE	(1,203)	-	80	PROJ# 143986	AT&T TRENCHING AT NORMA DRIVE
PACIFIC BELL TELEPHONE	(1,102)	-	80	PROJ #142923	AT&T TRENCHING AT SCRIPPS GATEWAY
PACIFIC BELL TELEPHONE	(1,086)	-	44	PROJ# 165165	AT&T TRENCHING @ WIMBERLY SQ
PACIFIC BELL TELEPHONE	(1,079)	-	80	PROJ# 142978	AT&T TRENCHING AT LINNET STREET
PACIFIC BELL TELEPHONE	(1,053)	-	96	PROJ# 137462	AT&T TRENCHING AT VILLAGEROAD & SCRIPPS POWAY DR
PACIFIC BELL TELEPHONE	(1,051)	-	84	PROJ# 142339	AT & T TRENCHING AT CHATSWORTH BLVD

Applicants with Multiple Deficit Accounts totaling \$10,000 or more⁽¹⁾

As of June 30, 2009⁽²⁾

Applicant Name	Balance Due	Current ⁽³⁾ Period Deposits	Weeks in Deficit	Project Name		
PACIFIC BELL TELEPHONE	(1,050)	-	96	PROJ# 137507	AT&T TRENCHING	AT TORREY PINES RD
PACIFIC BELL TELEPHONE	(1,042)	-	96	PROJ# 137627	AT&T TRENCHING @	SPARREN AVE
PACIFIC BELL TELEPHONE	(1,038)	-	84	PROJ# 142874	AT&T TRENCHING AT	SCRIPPS LAKE DRIVE
PACIFIC BELL TELEPHONE	(1,030)	-	96	PROJ# 137636	AT&T TRENCHING @	WESTVIEW WY
PACIFIC BELL TELEPHONE	(1,011)	-	16	PROJ# 160943	AT&T TRENCHING @	CHARMANT6578081
PACIFIC BELL TELEPHONE	(1,004)	-	96	PROJ# 137632	AT&T TRENCHING @	SPRINGHURST DR & POWAY RD
PACIFIC BELL TELEPHONE	(932)	-	92	PROJ# 139206	AT&T TRENCHING AT	MIRA MESA
PACIFIC BELL TELEPHONE	(901)	-	76	PROJ# 147480	AT&T TRENCH @	CAMINO DE LA REINA
PACIFIC BELL TELEPHONE	(863)	-	80	PROJ# 145786	AT&T TRENCHING AT	DEL DAIBLO WAY
PACIFIC BELL TELEPHONE	(853)	-	40	PTS# 165478	AT&T TRENCHING FOR	JOB# 5966386
PACIFIC BELL TELEPHONE	(823)	-	36	PROJ# 169192	AT&T TRENCHING	#6634545
PACIFIC BELL TELEPHONE	(804)	-	96	PROJ# 137502	AT&T TRENCHING	AT ELSA RD
PACIFIC BELL TELEPHONE	(781)	-	80	PROJ# 142956	AT&T TRENCHING	AT CAM TRANQUILIO
PACIFIC BELL TELEPHONE	(736)	-	88	PROJ# 139886	AT&T TRENCHING @	MONTEZUMA ROAD
PACIFIC BELL TELEPHONE	(727)	-	36	PROJ# 167465	AT&T TRENCHING	#667268
PACIFIC BELL TELEPHONE	(719)	-	76	PROJ# 147483	AT&T TRENCH @	GREENBRIER & MILLBROOK
PACIFIC BELL TELEPHONE	(715)	-	80	PROJ# 146197	AT&T TRENCHING AT	POBLADO ROAD
PACIFIC BELL TELEPHONE	(708)	-	76	PROJ# 147576	AT&T @	4023 RUEDA DRIVE
PACIFIC BELL TELEPHONE	(687)	-	96	PROJ# 137472	AT&T TRENCHING	AT PASEO VERANO
PACIFIC BELL TELEPHONE	(652)	-	96	PROJ# 137510	AT&T TRENCHING	AT VIA MALLORCA
PACIFIC BELL TELEPHONE	(651)	-	80	PROJ #142933	AT&T TRENCHING AT	CAMINITO GARCIA
PACIFIC BELL TELEPHONE	(651)	-	32	PROJ# 169577	AT&T TRENCHING	#6702517
PACIFIC BELL TELEPHONE	(626)	-	76	PROJ# 147585	AT&T @	4985 VIA PAPEL
PACIFIC BELL TELEPHONE	(613)	-	84	PROJ# 142344	AT & T TRENCHING AT	WORTHING AVENUE
PACIFIC BELL TELEPHONE	(609)	-	84	PROJ# 142337	AT & T TRENCHING AT	ANTIGUA BLVD.
PACIFIC BELL TELEPHONE	(607)	-	80	PROJ# 146210	AT&T TRENCHING AT	BIG SPRING WAY
PACIFIC BELL TELEPHONE	(594)	-	40	PROJ# 165997	AT&T TRENCHING @	CONVOY CT
PACIFIC BELL TELEPHONE	(588)	-	48	PROJ# 160744	AT&T TRENCHING -	6683775
PACIFIC BELL TELEPHONE	(586)	-	36	PROJ# 169195	AT&T TRENCHING	#6413053
PACIFIC BELL TELEPHONE	(570)	-	92	PROJ# 139201	AT&T TRENCHING AT	FLORE TER
PACIFIC BELL TELEPHONE	(565)	-	48	PROJ# 160749	AT&T TRENCHING -	6412917
PACIFIC BELL TELEPHONE	(548)	-	92	PROJ# 138099	AT&T TRENCHING AT	WORLD TRADE DRIVE
PACIFIC BELL TELEPHONE	(530)	-	96	PROJ# 137616	AT&T TRENCHING @	60TH ST
PACIFIC BELL TELEPHONE	(529)	-	88	PROJ# 139771	AT&T TRENCHING AT	CHEROKEE AVE
PACIFIC BELL TELEPHONE	(526)	-	80	PROJ #142921	AT&T TRENCHING AT	BACON STREET
PACIFIC BELL TELEPHONE	(519)	-	48	PROJ# 160736	AT&T TRENCHING -	6569030
PACIFIC BELL TELEPHONE	(507)	-	80	PROJ# 145789	AT&T TRENCHING AT	HONEYSUCKLE LANE
PACIFIC BELL TELEPHONE	(499)	-	80	PROJ #142935	AT&T TRENCHING AT	ISLAND AVENUE
PACIFIC BELL TELEPHONE	(486)	-	80	PROJ# 142983	AT&T TRENCHING	AT LA JOLLA BLVD
PACIFIC BELL TELEPHONE	(485)	-	68	PTS #149745	AT & T TRENCHING AT	WORTHINGTON
PACIFIC BELL TELEPHONE	(484)	-	84	PROJ# 142334	AT & T TRENCHING AT	ENCINO AVE
PACIFIC BELL TELEPHONE	(482)	-	48	PROJ# 160750	AT&T TRENCHING -	6397890
PACIFIC BELL TELEPHONE	(481)	-	96	PROJ# 137371	AT&T TRENCHING	AT DANIEL AVE
PACIFIC BELL TELEPHONE	(480)	-	80	PROJ #142953	AT&T TRENCHING AT	RUFFIN ROAD
PACIFIC BELL TELEPHONE	(471)	-	96	PROJ# 137603	AT&T TRENCHING @	AVIARY DR
PACIFIC BELL TELEPHONE	(467)	-	96	PROJ# 137520	AT&T TRENCHING	AT W GRAPE ST
PACIFIC BELL TELEPHONE	(466)	-	84	PROJ# 142348	AT & T TRENCHING AT	EL CAJON BLVD
PACIFIC BELL TELEPHONE	(463)	-	80	PROJ# 146201	AT&T TRENCHING AT	VIA DEL CANNON
PACIFIC BELL TELEPHONE	(451)	-	80	PROJ #142946	AT&T TRENCHING AT	QUIVIRA
PACIFIC BELL TELEPHONE	(449)	-	80	PROJ# 142993	AT&T TRENCHING	AT W. HARBOR DRIVE
PACIFIC BELL TELEPHONE	(448)	-	80	PROJ# 142947	AT&T TRENCHING	AT EBERS STREET
PACIFIC BELL TELEPHONE	(446)	-	84	PROJ# 142333	AT & T TRENCHING AT	QUIVIRA WAY
PACIFIC BELL TELEPHONE	(445)	-	48	PROJ# 160754	AT&T TRENCHING-	6018617
PACIFIC BELL TELEPHONE	(444)	-	80	PROJ #143955	AT&T TRENCHING AT	SANTA BARBARA PLACE
PACIFIC BELL TELEPHONE	(442)	-	48	PROJ# 161250	AT&T TRENCHING -	5923328
PACIFIC BELL TELEPHONE	(439)	-	76	PROJ# 147995	AT&T TRENCHING @	GRANDEE PI
PACIFIC BELL TELEPHONE	(430)	-	96	PROJ# 135997	AT&T TRENCHING @	WEST BERNARDO DRIVE
PACIFIC BELL TELEPHONE	(424)	-	36	PROJ# 169014	AT&T TRENCHING	#7041448
PACIFIC BELL TELEPHONE	(421)	-	80	PROJ# 145919	AT&T TRENCHING AT	BERNARDO CENTER DRIVE
PACIFIC BELL TELEPHONE	(412)	-	84	PROJ# 142363	AT & T TRENCHING AT	LANSDALE DRIVE
PACIFIC BELL TELEPHONE	(412)	-	48	PROJ# 160745	AT&T TRENCHING -	6365279
PACIFIC BELL TELEPHONE	(404)	-	76	PROJ# 147571	AT&T TRENCH @	4575 MILTON STREET
PACIFIC BELL TELEPHONE	(403)	-	96	PROJ# 137463	AT&T TRENCHING	AT CYPRESS CANYON RD
PACIFIC BELL TELEPHONE	(403)	-	80	PROJ# 142930	AT&T TRENCHING	AT ELM STREET
PACIFIC BELL TELEPHONE	(399)	-	80	PROJ #142944	AT&T TRENCHING AT	EL CAJON BLVD
PACIFIC BELL TELEPHONE	(398)	-	76	PROJ# 147478	AT&T TRENCH @	FRIARS ROAD
PACIFIC BELL TELEPHONE	(397)	-	76	PROJ# 147572	AT&T @	4569 DWIGHT STREET
PACIFIC BELL TELEPHONE	(396)	-	80	PROJ# 142911	AT&T TRENCHING	AT 55TH STREET
PACIFIC BELL TELEPHONE	(394)	-	80	PROJ #142943	AT&T TRENCHING AT	FAIRMOUNT AVENUE
PACIFIC BELL TELEPHONE	(392)	-	40	PROJ# 165991	AT&T TRENCHING	#6687917
PACIFIC BELL TELEPHONE	(391)	-	96	PROJ# 137511	AT&T TRENCHING	AT VIA MALLORCA
PACIFIC BELL TELEPHONE	(381)	-	40	PTS# 165484	AT&T TRENCHING FOR	JOB# 6461395
PACIFIC BELL TELEPHONE	(379)	-	44	PTS# 165446	AT&T TRENCHING	JOB 6669998
PACIFIC BELL TELEPHONE	(376)	-	84	PROJ# 142331	AT & T TRENCHING AT	GRAMERCY DRIVE
PACIFIC BELL TELEPHONE	(374)	-	44	PTS# 165444	AT&T TRENCHING	JOB #6647344
PACIFIC BELL TELEPHONE	(361)	-	92	PROJ# 139470	AT&T TRENCHING AT	DARKWOOD ROAD
PACIFIC BELL TELEPHONE	(358)	-	92	PROJ# 135896	A&T TRENCHING AT	LAUREL
PACIFIC BELL TELEPHONE	(356)	-	16	PTS# 165447	AT&T TRENCHING	JOB 6647364
PACIFIC BELL TELEPHONE	(355)	-	40	PTS# 165486	AT&T TRENCHING FOR	JOB# 6413009
PACIFIC BELL TELEPHONE	(353)	-	80	PROJ #144027	AT&T TRENCHING AT	LA JOLLA BLVD.
PACIFIC BELL TELEPHONE	(352)	-	88	PROJ# 139850	AT&T TRENCHING @	SANTA FE
PACIFIC BELL TELEPHONE	(345)	-	92	PROJ# 138264	AT&T TRENCHING AT	SCRIPPS WESTVIEW
PACIFIC BELL TELEPHONE	(342)	-	92	PROJ# 137501	AT&T TRENCHING @	PONTIAC ST
PACIFIC BELL TELEPHONE	(340)	-	92	PROJ# 138084	AT&T TRENCHING AT	FINO DRIVE

Applicants with Multiple Deficit Accounts totaling \$10,000 or more⁽¹⁾

As of June 30, 2009⁽²⁾

Applicant Name	Balance Due	Current ⁽³⁾ Period Deposits	Weeks in Deficit	Project Name
PACIFIC BELL TELEPHONE	(337)	-	40	PTS# 165457 AT&T TRENCHING FOR JOB# 5530512
PACIFIC BELL TELEPHONE	(337)	-	40	PTS# 165450 AT&T TRENCHING FOR JOB# 6672132
PACIFIC BELL TELEPHONE	(336)	-	44	PROJ# 165163 AT&T TRENCHING @ RADIO DR
PACIFIC BELL TELEPHONE	(323)	-	92	PROJ# 136175 A&T TRENCHING AT MISSION
PACIFIC BELL TELEPHONE	(323)	-	96	PROJ# 137631 AT&T TRENCHING @ CAMINITO DESEO
PACIFIC BELL TELEPHONE	(322)	-	48	PROJ# 160732 AT&T TRENCHING - 6671644
PACIFIC BELL TELEPHONE	(321)	-	76	PROJ# 147586 AT&T @ 6150 MERCER STREET
PACIFIC BELL TELEPHONE	(320)	-	80	PROJ #142928 AT&T TRENCHING AT KEARNY VILLA
PACIFIC BELL TELEPHONE	(320)	-	72	PROJ# 147612 AT&T TRENCHING @ LA JOLLA MESA DR
PACIFIC BELL TELEPHONE	(317)	-	92	PROJ# 139258 AT&T TRENCHING AT STOCKWOOD
PACIFIC BELL TELEPHONE	(313)	-	48	PROJ# 160941 AT&T TREMCJOMG @ 65TH. ST662861
PACIFIC BELL TELEPHONE	(313)	-	36	PROJ# 168537 AT&T TRENCHING 7018257
PACIFIC BELL TELEPHONE	(312)	-	96	PROJ# 137869 AT&T TRENCHING @ UNION
PACIFIC BELL TELEPHONE	(311)	-	80	PROJ# 146207 AT&T TRENCHING AT DEWEY STREET
PACIFIC BELL TELEPHONE	(306)	-	96	PROJ#136248 AT&T TRENCHING@ MANLEY
PACIFIC BELL TELEPHONE	(303)	-	92	PROJ# 138111 AT&T TRENCHING AT LA JOLLA BLVD
PACIFIC BELL TELEPHONE	(300)	-	96	PROJ# 137482 AT&T TRENCHING AT BEYER BLVD
PACIFIC BELL TELEPHONE	(300)	-	92	PROJ# 139362 AT&T TRENCHING AT GLENFLORA
PACIFIC BELL TELEPHONE	(296)	-	76	PROJ# 147488 AT&T TRENCH @ 7954 MISSION CENTER CT
PACIFIC BELL TELEPHONE	(296)	-	80	PROJ# 142981 AT&T TRENCHING AT VIA APRILLA
PACIFIC BELL TELEPHONE	(294)	-	48	PROJ# 160734 AT& TRENCHING - 6413389
PACIFIC BELL TELEPHONE	(286)	-	48	PROJ# 160935 AT&T TRENCHING @ LIBSON 6262672
PACIFIC BELL TELEPHONE	(286)	-	92	PROJ# 136548 A&T TRENCHING AT ARTHUR
PACIFIC BELL TELEPHONE	(284)	-	84	PROJ# 142342 AT & T TRENCHING AT NORTH PARK WAY
PACIFIC BELL TELEPHONE	(282)	-	72	PTS #149755 AT & T TRENCHING AT DERBY DOWNS ROAD
PACIFIC BELL TELEPHONE	(281)	-	96	PROJ# 137367 AT&T TRENCHING AT MADDOX DR
PACIFIC BELL TELEPHONE	(279)	-	88	PROJ# 139758 AT&T TRENCHING AT ORANGE AVENUE
PACIFIC BELL TELEPHONE	(279)	-	48	PROJ# 160756 AT&T TRENCHING - 6413022
PACIFIC BELL TELEPHONE	(273)	-	48	PROJ# 161256 AT&T TRENCHING - 6691283
PACIFIC BELL TELEPHONE	(270)	-	92	PROJ# 139197 AT&T TRENCHING AT GOVERNOR DRIVE
PACIFIC BELL TELEPHONE	(268)	-	92	PROJ#138177 AT&T TRENCHING @ SCRIPPS POWAY PARKWAY
PACIFIC BELL TELEPHONE	(267)	-	84	PROJ# 142332 AT & T TRENCHING AT MARATHON DRIVE
PACIFIC BELL TELEPHONE	(265)	-	68	PROJ# 150062 AT&T TRENCHING @ DAWES STREET
PACIFIC BELL TELEPHONE	(265)	-	96	PROJ# 137223 AT&T TRENCHING AT CALLE CRISTOBAL
PACIFIC BELL TELEPHONE	(264)	-	40	PTS# 165445 AT&T TRENCHING FOR JOB# 6647513
PACIFIC BELL TELEPHONE	(258)	-	92	PROJ# 138088 AT&T TRENCHING AT TIERRASANTA BLVD
PACIFIC BELL TELEPHONE	(256)	-	44	PROJ# 165167 AT&T TRENCHING @ RICHMOND ST
PACIFIC BELL TELEPHONE	(255)	-	96	PROJ# 137469 AT&T TRENCHING AT BANISTER LANE
PACIFIC BELL TELEPHONE	(251)	-	96	PROJ# 137494 AT&T TRENCHING AT SAN YSIDRO BLVD
PACIFIC BELL TELEPHONE	(251)	-	88	PROJ# 141861 AT & T TRENCHING AT TENNYSON ROAD
PACIFIC BELL TELEPHONE	(248)	-	100	PROJ# 130467 AT&T TRENCHING @ GOVERNOR & LIPMANN
PACIFIC BELL TELEPHONE	(241)	-	84	PROJ #141985 AT & T TRENCHING AT EASTGATE MALL
PACIFIC BELL TELEPHONE	(240)	-	48	PROJ# 160753 AT&T TRENCHING - 6616880
PACIFIC BELL TELEPHONE	(238)	-	96	PROJ# 137503 AT&T TRENCHING AT RADCLIFFE LN
PACIFIC BELL TELEPHONE	(237)	-	92	PROJ#138618 AT&T TRENCHING @ POLK AV
PACIFIC BELL TELEPHONE	(235)	-	48	PROJ# 160934 AT&T TRENCHING @ SERVANO6646331
PACIFIC BELL TELEPHONE	(233)	-	80	PROJ #145701 AT&T TRENCHING AT PRIVATE STREET
PACIFIC BELL TELEPHONE	(231)	-	36	PROJ# 169540 AT&T TRENCHING #6536135
PACIFIC BELL TELEPHONE	(229)	-	92	PROJ# 135873 A&T TRENCHING AT PALM ST
PACIFIC BELL TELEPHONE	(228)	-	96	PROJ# 137234 AT&T TRENCHING AT SHAFTER ST
PACIFIC BELL TELEPHONE	(226)	-	92	PROJ# 136092 A&T TRENCHING AT POLK
PACIFIC BELL TELEPHONE	(222)	-	36	PROJ# 169538 AT&T TRENCHING #6672989
PACIFIC BELL TELEPHONE	(221)	-	92	PROJ# 139209 AT&T TRENCHING AT ORO VISTA ROAD
PACIFIC BELL TELEPHONE	(215)	-	80	PROJ #142939 AT&T TRENCHING AT PACIFIC HIGHWAY
PACIFIC BELL TELEPHONE	(212)	-	48	PROJ# 160740 AT&T TRENCHING - 6215621
PACIFIC BELL TELEPHONE	(211)	-	76	PROJ# 147484 AT&T TRENCH @ 4249 NOBEL DRIVE
PACIFIC BELL TELEPHONE	(208)	-	32	PROJ# 169592 AT&T TRENCHING #6673073
PACIFIC BELL TELEPHONE	(204)	-	36	PTS #167418 AT&T TRENCHING
PACIFIC BELL TELEPHONE	(204)	-	76	PROJ# 147927 AT&T TRENCHING @ SPRINGHURST DR
PACIFIC BELL TELEPHONE	(202)	-	96	PROJ# 135700 AT&T METER AND TRENCHING
PACIFIC BELL TELEPHONE	(202)	-	96	PROJ# 135935 AT&T TRENCHING @ CAMPANILE
PACIFIC BELL TELEPHONE	(202)	-	96	PROJ# 135943 AT&T TRENCHING @ CONVOY
PACIFIC BELL TELEPHONE	(202)	-	96	PROJ#136240 AT&T TRENCHING@ SANTO AND SNOOK
PACIFIC BELL TELEPHONE	(202)	-	96	PROJ#136106 AT&T TRENCHING@ CAMINO SANTA FE
PACIFIC BELL TELEPHONE	(202)	-	88	PROJ# 139765 AT&T TRENCHING REPAIR
PACIFIC BELL TELEPHONE	(199)	-	48	PROJ# 160936 AT&T TRENCHING @ MAGELLAN6550281
PACIFIC BELL TELEPHONE	(195)	-	64	PROJ# 150864 AT&T TRENCHING @ SABRE SPRINGS
PACIFIC BELL TELEPHONE	(193)	-	12	PROJ# 151571 AT&T TRENCHING @ JOB #6385787
PACIFIC BELL TELEPHONE	(192)	-	48	PROJ# 160746 AT&T TRENCHING - 6553618
PACIFIC BELL TELEPHONE	(189)	-	92	PROJ# 138092 AT&T TRENCHING AT CAMINITO DESEO
PACIFIC BELL TELEPHONE	(188)	-	88	PROJ# 139922 AT&T TRENCHING @ JEMEZ DRIVE
PACIFIC BELL TELEPHONE	(188)	-	40	PROJ# 165994 AT&T TRENCHING #6678602
PACIFIC BELL TELEPHONE	(188)	-	40	PROJ# 165993 AT&T TRENCHING #6677810
PACIFIC BELL TELEPHONE	(187)	-	48	PROJ# 160636 AT&T TRENCHING - 6212382
PACIFIC BELL TELEPHONE	(184)	-	36	PROJ# 169249 AT&T TRENCHING #6414342
PACIFIC BELL TELEPHONE	(183)	-	52	PROJ# 150849 AT&T TRENCHING @ BROOKLYN AVE
PACIFIC BELL TELEPHONE	(177)	-	48	PROJ# 160939 AT&T TRENCHING @ RANDOLPH6536135
PACIFIC BELL TELEPHONE	(175)	-	88	PROJ# 139858 AT&T TRENCHING @ BLUE LAKE TR
PACIFIC BELL TELEPHONE	(173)	-	80	PROJ# 146212 AT&T TRENCHING AT 4TH AVENUE
PACIFIC BELL TELEPHONE	(172)	-	80	PROJ #145692 AT&T TRENCHING AT NOBEL DRIVE
PACIFIC BELL TELEPHONE	(169)	-	96	PROJ# 137375 AT&T TRENCHING AT AERO DR
PACIFIC BELL TELEPHONE	(169)	-	96	PROJ# 137236 AT&T TRENCHING AT PARADISE VALLEY RD
PACIFIC BELL TELEPHONE	(169)	-	92	PROJ#138177 AT&T TRENCHING @ MISSION MESA
PACIFIC BELL TELEPHONE	(169)	-	92	PROJ# 138275 AT&T TRENCHING AT BELL BLUFF

Applicants with Multiple Deficit Accounts totaling \$10,000 or more⁽¹⁾

As of June 30, 2009⁽²⁾

Applicant Name	Balance Due	Current ⁽³⁾ Period Deposits	Weeks in Deficit	Project Name		
PACIFIC BELL TELEPHONE	(169)	-	88	PROJ# 139890	AT&T TRENCHING @	HANCOCK STREET
PACIFIC BELL TELEPHONE	(169)	-	80	PROJ #145701	AT&T TRENCHING AT	RENAISSANCE
PACIFIC BELL TELEPHONE	(167)	-	92	PROJ#138174	AT&T TRENCHING @	GENESEE COVE
PACIFIC BELL TELEPHONE	(166)	-	80	PROJ #143947	AT&T TRENCHING AT	SAN DIEGUITO ROAD
PACIFIC BELL TELEPHONE	(166)	-	96	PROJ# 137866	AT&T TRENCHING @	SUNSET
PACIFIC BELL TELEPHONE	(166)	-	92	PROJ# 139361	AT&T TRENCHING AT	DEL MAR HEIGHTS
PACIFIC BELL TELEPHONE	(166)	-	88	PROJ# 139961	AT&T TRENCHING @	POLK AVENUE
PACIFIC BELL TELEPHONE	(165)	-	68	PTS #149724	AT & T TRENCHING AT	EL CAMINO REAL
PACIFIC BELL TELEPHONE	(165)	-	36	PROJ# 169539	AT&T TRENCHING #5926086	
PACIFIC BELL TELEPHONE	(165)	-	68	PROJ# 150009	AT&T TRENCHING @	MURPHY CANYON
PACIFIC BELL TELEPHONE	(162)	-	76	PROJ# 130454	AT&T TRENCHING @	GOVERNOR DRIVE
PACIFIC BELL TELEPHONE	(161)	-	12	PROJ# 167462	AT&T TRENCHING #6677552	
PACIFIC BELL TELEPHONE	(161)	-	96	PROJ# 137612	AT&T TRENCHING @	AVIARY DR
PACIFIC BELL TELEPHONE	(161)	-	88	PROJ# 139760	AT&T TRENCHING AT	CEDAR STREET
PACIFIC BELL TELEPHONE	(160)	-	80	PROJ #144043	AT&T TRENCHING AT	CHANDLER DRIVE
PACIFIC BELL TELEPHONE	(159)	-	92	PROJ# 137481	AT&T TRENCHING @	MARGERUM AV
PACIFIC BELL TELEPHONE	(158)	-	48	PROJ# 160938	AT&T TRENCHING @	ARBODAR 664675
PACIFIC BELL TELEPHONE	(158)	-	40	PROJ# 165996	AT&T TRENCHING	#6669970-2
PACIFIC BELL TELEPHONE	(157)	-	36	PROJ# 169242	AT&T TRENCHING #7017446	
PACIFIC BELL TELEPHONE	(156)	-	28	PROJ# 158114	AT&T TRENCHING	JOB 6603586
PACIFIC BELL TELEPHONE	(156)	-	48	PROJ# 160755	AT&T TRENCHING -	6633253
PACIFIC BELL TELEPHONE	(156)	-	88	PROJ# 139918	AT&T TRENCHING @	CALLE PRIMERA
PACIFIC BELL TELEPHONE	(155)	-	76	PROJ# 147477	AT&T TRENCH @	CASTLE HILLS DRIVE
PACIFIC BELL TELEPHONE	(155)	-	72	PROJ# 149847	AT&T TRENCHING @	TOOMA STREET
PACIFIC BELL TELEPHONE	(153)	-	72	PROJ# 149846	AT&T TRENCHING @	REYNARD WAY
PACIFIC BELL TELEPHONE	(153)	-	96	PROJ# 137629	AT&T TRENCHING @	LOZANA RD
PACIFIC BELL TELEPHONE	(153)	-	96	PROJ# 137498	AT&T TRENCHING	AT BELL BLUFF AVE
PACIFIC BELL TELEPHONE	(153)	-	48	PROJ# 160741	AT&T TRENCHING -	6413147
PACIFIC BELL TELEPHONE	(153)	-	48	PROJ# 161264	AT&T TRENCHING -	6578026
PACIFIC BELL TELEPHONE	(153)	-	48	PROJ# 161252	AT&T TRENCHING -	6589874
PACIFIC BELL TELEPHONE	(153)	-	48	PROJ# 161263	AT&T TRENCHING -	6573687
PACIFIC BELL TELEPHONE	(152)	-	44	PROJ# 165162	AT&T TRENCHING @	C ST
PACIFIC BELL TELEPHONE	(152)	-	48	PROJ# 160751	AT&T TRENCHING -	6592068
PACIFIC BELL TELEPHONE	(151)	-	92	PROJ# 138273	AT&T TRENCHING AT	TOWSER STREET
PACIFIC BELL TELEPHONE	(150)	-	68	PROJ# 150028	AT&T TRENCHING @	SUNSET LANE
PACIFIC BELL TELEPHONE	(150)	-	68	PROJ# 150033	AT&T TRENCHING @	MADRIGAL STREET
PACIFIC BELL TELEPHONE	(149)	-	76	PROJ# 147482	AT&T TRENCH @	3788 GOVENOR DRIVE
PACIFIC BELL TELEPHONE	(149)	-	96	PROJ# 137224	AT&T TRENCHING AT	WESTONHILL DR
PACIFIC BELL TELEPHONE	(148)	-	96	PROJ# 137492	AT&T TRENCHING	AT THERMAL AVENUE
PACIFIC BELL TELEPHONE	(145)	-	68	PROJ# 149829	AT&T TRENCHING @	HORNBLEND
PACIFIC BELL TELEPHONE	(145)	-	96	PROJ# 136061	AT&T TRENCHING @	TWAIN AVE
PACIFIC BELL TELEPHONE	(144)	-	36	PROJ# 169237	AT&T TRENCHING #6684719	
PACIFIC BELL TELEPHONE	(144)	-	96	PROJ# 137500	AT&T TRENCHING	AT DUENDA RD
PACIFIC BELL TELEPHONE	(143)	-	76	PROJ# 147491	AT&T TRENCH @	7347 LATROBE CIRCLE
PACIFIC BELL TELEPHONE	(139)	-	48	PROJ# 160634	AT&T TRENCHING -	6427900
PACIFIC BELL TELEPHONE	(138)	-	92	PROJ# 138102	AT&T TRENCHING @	LA PLAYA
PACIFIC BELL TELEPHONE	(134)	-	40	PROJ# 167537	AT&T TRENCHING #6671847	
PACIFIC BELL TELEPHONE	(134)	-	40	PROJ# 167576	AT&T TRENCHING #6678578	
PACIFIC BELL TELEPHONE	(132)	-	92	PROJ# 139444	AT&T TRENCHING AT	CHEROKEE AVENUE
PACIFIC BELL TELEPHONE	(131)	-	96	PROJ# 137373	AT&T TRENCHING	AT SALMON ST
PACIFIC BELL TELEPHONE	(130)	-	16	PROJ# 167451	AT&T TRENCHING #661870	
PACIFIC BELL TELEPHONE	(129)	-	32	PROJ# 169536	AT&T TRENCHING #161211	
PACIFIC BELL TELEPHONE	(128)	-	92	PROJ# 137495	AT&T TRENCHING @	ELDRIDGE ST
PACIFIC BELL TELEPHONE	(127)	-	76	PROJ# 147490	AT&T TRENCH @	VENTURA PLACE
PACIFIC BELL TELEPHONE	(125)	-	92	PROJ# 138109	AT&T TRENCHING AT	MISSIONVISTA DRIVE
PACIFIC BELL TELEPHONE	(125)	-	4	PROJ# 143983	AT&T TRENCHING	AT POPLAR STREET
PACIFIC BELL TELEPHONE	(121)	-	60	PROJ# 150860	AT&T TRENCHING @	3464 MISSION MESA WY
PACIFIC BELL TELEPHONE	(121)	-	96	PROJ# 135971	AT&T TRENCHING @	CAM SANTALUZ
PACIFIC BELL TELEPHONE	(115)	-	92	PROJ# 135945	A&T TRENCHING AT	ESTRELLA
PACIFIC BELL TELEPHONE	(115)	-	92	PROJ# 135970	A&T TRENCHING AT	LYNRIDGE
PACIFIC BELL TELEPHONE	(115)	-	92	PROJ# 136104	A&T TRENCHING AT	THORN
PACIFIC BELL TELEPHONE	(115)	-	92	PROJ# 136564	A&T TRENCHING AT	REFLECTION DRIVE
PACIFIC BELL TELEPHONE	(115)	-	92	PROJ# 138094	AT&T TRENCHING @	UNIVERSITY AVE
PACIFIC BELL TELEPHONE	(115)	-	92	PROJ# 138146	AT&T TRENCHING @	BELL BLUFF AVE
PACIFIC BELL TELEPHONE	(115)	-	92	PROJ# 138136	AT&T TRENCHING @	ZION AVE
PACIFIC BELL TELEPHONE	(115)	-	88	PROJ# 140002	AT&T TRENCHING @	MADISON AVENUE
PACIFIC BELL TELEPHONE	(113)	-	48	PTS #147532	AT&T TRENCHING AT	ESPIRIT AVENUE
PACIFIC BELL TELEPHONE	(113)	-	76	PROJ# 147577	AT&T @	4413 ROBBINS STREET
PACIFIC BELL TELEPHONE	(111)	-	36	PROJ# 169535	AT&T TRENCHING #6676823	
PACIFIC BELL TELEPHONE	(111)	-	36	PROJ# 169012	AT&T TRENCHING	JOB# 6686042
PACIFIC BELL TELEPHONE	(111)	-	36	PROJ# 169017	AT&T TRENCHING	JOB# 6698508
PACIFIC BELL TELEPHONE	(111)	-	36	PROJ# 169401	AT&T TRENCHING	JOB# 6427756
PACIFIC BELL TELEPHONE	(108)	-	48	PROJ# 160739	AT&T TRENCHING -	6529927
PACIFIC BELL TELEPHONE	(108)	-	72	PTS #149730	AT & T TRENCHING AT	HAWK STREET
PACIFIC BELL TELEPHONE	(107)	-	36	PROJ# 168530	AT&T TRENCHING	6672138
PACIFIC BELL TELEPHONE	(107)	-	36	PROJ# 168531	AT&T TRENCHING	6676820
PACIFIC BELL TELEPHONE	(107)	-	36	PROJ# 168532	AT&T TRENCHING	6684914
PACIFIC BELL TELEPHONE	(107)	-	24	PROJ# 168536	AT&T TRENCHING	6672590
PACIFIC BELL TELEPHONE	(107)	-	36	PROJ# 168538	AT&T TRENCHING	6673082
PACIFIC BELL TELEPHONE	(107)	-	36	PROJ# 168541	AT&T TRENCHING	6672623
PACIFIC BELL TELEPHONE	(107)	-	56	PROJ# 152206	TIME WARNER TRENCHING@	SUNDANCE AVE
PACIFIC BELL TELEPHONE	(105)	-	84	PROJ# 142346	AT & T TRENCHING AT	GOLD COAST DRIVE
PACIFIC BELL TELEPHONE	(105)	-	76	PROJ# 147481	AT&T TRENCH @	CARMEL VALLEY RD
PACIFIC BELL TELEPHONE	(104)	-	28	PROJ# 168207	AT&T TRENCHING	JOB #6659326

Applicants with Multiple Deficit Accounts totaling \$10,000 or more⁽¹⁾

As of June 30, 2009⁽²⁾

Applicant Name	Balance Due	Current ⁽³⁾ Period Deposits	Weeks in Deficit	Project Name
PACIFIC BELL TELEPHONE	(104)	-	36	PROJ# 169001 AT&T TRENCHING #6666380
PACIFIC BELL TELEPHONE	(104)	-	32	PROJ# 169571 AT&T TRENCHING #5797638
PACIFIC BELL TELEPHONE	(104)	-	32	PROJ# 169574 AT&T TRENCHING #7004063
PACIFIC BELL TELEPHONE	(104)	-	32	PROJ# 169605 AT&T TRENCHING #5932289
PACIFIC BELL TELEPHONE	(104)	-	32	PROJ# 169609 AT&T TRENCHING #6678493
PACIFIC BELL TELEPHONE	(104)	-	32	PROJ# 169607 AT&T TRENCHING #6575254
PACIFIC BELL TELEPHONE	(104)	-	36	PROJ# 169169 AT&T TRENCHING #7003892
PACIFIC BELL TELEPHONE	(104)	-	36	PROJ# 169179 AT&T TRENCHING #7087806
PACIFIC BELL TELEPHONE	(104)	-	36	PROJ# 169187 AT&T TRENCHING #6712560
PACIFIC BELL TELEPHONE	(104)	-	36	PROJ# 169211 AT&T TRENCHING #6671771
PACIFIC BELL TELEPHONE	(104)	-	36	PROJ# 169214 AT&T TRENCHING #6608759
PACIFIC BELL TELEPHONE	(104)	-	36	PROJ# 169221 AT&T TRENCHING #5926422
PACIFIC BELL TELEPHONE	(104)	-	36	PROJ# 169230 AT&T TRENCHING #6644694
PACIFIC BELL TELEPHONE	(104)	-	36	PROJ# 169233 AT&T TRENCHING #6686042
PACIFIC BELL TELEPHONE	(104)	-	36	PROJ# 169244 AT&T TRENCHING #6577945
PACIFIC BELL TELEPHONE	(104)	-	36	PROJ# 169246 AT&T TRENCHING #6638750
PACIFIC BELL TELEPHONE	(104)	-	36	PROJ# 169248 AT&T TRENCHING #6670013
PACIFIC BELL TELEPHONE	(104)	-	40	PROJ#136274 AT&T ELEC MTR& TRENCHING LAKE ASHMERE DR
PACIFIC BELL TELEPHONE	(104)	-	48	PROJ# 160672 AT&T TRENCHING - 6630042
PACIFIC BELL TELEPHONE	(104)	-	48	PROJ# 160945 AT&T TRENCHING @ 61ST ST 6641844
PACIFIC BELL TELEPHONE	(104)	-	40	PROJ#135845 AT&T ELEC MTR& TRENCHING ESTRELLA AV
PACIFIC BELL TELEPHONE	(104)	-	48	PROJ# 160643 AT&T TRENCHING - 6531138
PACIFIC BELL TELEPHONE	(104)	-	48	PROJ# 160644 AT&T TRENCHING - 6558491
PACIFIC BELL TELEPHONE	(104)	-	40	PROJ# 167590 AT&T TRENCHING #6686457
PACIFIC BELL TELEPHONE	(104)	-	40	PROJ# 167592 AT&T TRENCHING #6673151
PACIFIC BELL TELEPHONE	(102)	-	68	PROJ# 149954 AT&T TRENCHING @ LARKDALE AVENUE
PACIFIC BELL TELEPHONE	(102)	-	68	PROJ# 149966 AT&T TRENCHING @ WEST BERNARDO DRIVE
PACIFIC BELL TELEPHONE	(100)	-	20	PROJ# 167477 AT&T TRENCHING #7004063
PACIFIC BELL TELEPHONE	(98)	-	96	PROJ#136339 AT&T TRENCHING@ RUEDA
PACIFIC BELL TELEPHONE	(98)	-	96	PROJ#136341 AT&T TRENCHING@CASPER
PACIFIC BELL TELEPHONE	(98)	-	96	PROJ# 136556 AT&T COWLES
PACIFIC BELL TELEPHONE	(98)	-	92	PROJ# 138139 AT&T TRENCHING @ESTRELLA RD
PACIFIC BELL TELEPHONE	(98)	-	84	PROJ #142466 AT & T TRENCHING AT GOVERNOR
PACIFIC BELL TELEPHONE	(95)	-	40	PROJ# 166665 AT&T TRENCHING JOB# 7004032
PACIFIC BELL TELEPHONE	(94)	-	80	PROJ# 143980 AT&T TRENCHING AT ORO VISTA ROAD
PACIFIC BELL TELEPHONE	(90)	-	44	PTS# 165448 AT&T TRENCHING JOB 6642841
PACIFIC BELL TELEPHONE	(81)	-	12	PROJ# 151666 AT&T TRENCHING @ JOB #6382887
PACIFIC BELL TELEPHONE	(70)	-	40	PTS# 165449 AT&T TRENCHING FOR JOB# 6676816
PACIFIC BELL TELEPHONE	(67)	-	92	PROJ# 139438 AT&T TRENCHING AT BLUE LAKE DRIVE
PACIFIC BELL TELEPHONE	(55)	-	40	PROJ# 167582 AT&T TRENCHING #6645097
PACIFIC BELL TELEPHONE	(55)	-	68	PTS #149749 AT & T TRENCHING AT HANCOCK STREET
PACIFIC BELL TELEPHONE	(54)	-	80	PROJ #145696 AT&T TRENCHING AT SAN YSIDRO BLVD
PACIFIC BELL TELEPHONE	(53)	-	76	PROJ# 145693 AT&T TRENCHING AT PORTOFINO DRIVE
PACIFIC BELL TELEPHONE	(52)	-	80	PROJ# 142980 AT&T TRENCHING AT REAGAN ROAD
PACIFIC BELL TELEPHONE	(52)	-	80	PROJ# 142951 AT&T TRENCHING AT THANKSGIVING LANE
PACIFIC BELL TELEPHONE	(51)	-	72	PTS #149734 AT & T TRENCHING AT 42ND
PACIFIC BELL TELEPHONE	(51)	-	64	PROJ# 152700 AT&T TRENCHING FOR JOB# 6397509
PACIFIC BELL TELEPHONE	(51)	-	68	PROJ# 150030 AT&T TRENCHING @ UNIVERSITY AVENUE
PACIFIC BELL TELEPHONE	(51)	-	68	PTS #149751 AT & T TRENCHING AT DAWES
PACIFIC BELL TELEPHONE	(50)	-	80	PROJ #142950 AT&T TRENCHING AT DEL MAR AVENUE
PACIFIC BELL TELEPHONE	(50)	-	80	PROJ #142932 AT&T TRENCHING AT FLIPPER
PACIFIC BELL TELEPHONE	(49)	-	80	PROJ# 142972 AT&T TRENCHING AT JEWEL STREET
PACIFIC BELL TELEPHONE	(49)	-	44	PROJ# 165164 AT&T TRENCHING @GIRARD AV
PACIFIC BELL TELEPHONE	(48)	-	76	PROJ# 147986 AT&T TRENCHING @ 60TH ST
PACIFIC BELL TELEPHONE	(48)	-	80	PROJ #144034 AT&T TRENCHING AT E STREET
PACIFIC BELL TELEPHONE	(48)	-	52	PROJ# 138080 AT&T TRENCHING AT AVIARY DRIVE
PACIFIC BELL TELEPHONE	(47)	-	96	PROJ# 137642 AT&T TRENCHING @ W BERNARDO DR
PACIFIC BELL TELEPHONE	(36)	-	44	PROJ# 165161 AT&T TRENCHING SATELLITE BLVD
PACIFIC BELL TELEPHONE-	(2,032)	-	64	PROJ# 152593 AT&T TRENCHING @ TORREY PINES
PACIFIC BELL TELEPHONE-	(1,114)	-	64	PROJ# 152743 AT&T TRENCHING JOB 6550432
PACIFIC BELL TELEPHONE-	(1,087)	-	64	PROJ# 152694 AT&T TRENCHING @ MEADOW LARK
PACIFIC BELL TELEPHONE-	(479)	-	64	PROJ# 152706 AT&T TRENCHING JOB 6412992
PACIFIC BELL TELEPHONE-	(367)	-	64	PROJ# 152701 AT&T TRENCHING @ SUNSET LANE
PACIFIC BELL TELEPHONE-	(303)	-	64	PROJ# 152693 AT&T TRENCHING @ CHURCHWARD ST
PACIFIC BELL TELEPHONE-	(236)	-	64	PROJ# 152696 AT&T TRENCHING @ WESTINGHOUSE
PACIFIC BELL TELEPHONE-	(232)	-	64	PROJ# 152594 AT&T TRENCHING @ ARBOR DR
PACIFIC BELL TELEPHONE-	(169)	-	64	PROJ# 152751 AT&T TRENCHING JOB 4625866
PACIFIC BELL TELEPHONE-	(150)	-	64	PROJ# 152719 AT&T TRENCHING JOB 6531254
PACIFIC BELL TELEPHONE-	(150)	-	64	PROJ# 152732 AT&T TRENCHING JOB 6385544
PACIFIC BELL TELEPHONE-	(146)	-	64	PROJ# 152708 AT&T TRENCHING JOB 6046701-2
PACIFIC BELL TELEPHONE-	(121)	-	64	PROJ# 152748 AT&T TRENCHING JOB 6409263
PACIFIC BELL TELEPHONE -	(616)	-	96	PROJ# 137735 AT&T TRENCHING @ STARGAZE
PACIFIC BELL TELEPHONE -	(537)	-	68	PROJ# 151126 AT&T TRENCHING @ COSTA VERDE BLVD
PACIFIC BELL TELEPHONE -	(500)	-	68	PROJ# 151320 AT&T TRENCHING JOB #6386829
PACIFIC BELL TELEPHONE -	(423)	-	68	PROJ# 151113 AT&T TRENCHING @ MAIN
PACIFIC BELL TELEPHONE -	(404)	-	96	PROJ# 137746 / AT&T TRENCHING AT TORREY BLUFF DR
PACIFIC BELL TELEPHONE -	(399)	-	8	PROJ# 151129 AT&T TRENCHING @ FERN GLEN
PACIFIC BELL TELEPHONE -	(287)	-	68	PROJ# 151315 AT&T TRENCHING JOB #6081225
PACIFIC BELL TELEPHONE -	(281)	-	68	PROJ# 151309 AT&T TRENCHING JOB #6381301
PACIFIC BELL TELEPHONE -	(264)	-	68	PROJ# 151318 AT&T TRENCHING JOB #9412255
PACIFIC BELL TELEPHONE -	(243)	-	96	PROJ# 137774 AT&T TRENCHING @ THORN ST
PACIFIC BELL TELEPHONE -	(243)	-	96	PROJ# 137738 AT&T TRENCHING @ VIA SAN SABA
PACIFIC BELL TELEPHONE -	(243)	-	96	PROJ# 137762 AT&T TRENCHING @ JUDICIAL DR
PACIFIC BELL TELEPHONE -	(217)	-	68	PROJ# 151130 AT&T TRENCHING @ CARDENO DRIVE

Applicants with Multiple Deficit Accounts totaling \$10,000 or more⁽¹⁾

As of June 30, 2009⁽²⁾

Applicant Name	Balance Due	Current ⁽³⁾ Period Deposits	Weeks in Deficit	Project Name
PACIFIC BELL TELEPHONE -	(209)	-	96	PROJ# 137863 AT&T TRENCHING @ THORN ST
PACIFIC BELL TELEPHONE -	(184)	-	4	PROJ# 151122 AT&T TRENCHING @ DIMARINO STREET
PACIFIC BELL TELEPHONE -	(182)	-	68	PROJ# 151133 AT&T TRENCHING @ JOB 6524022
PACIFIC BELL TELEPHONE -	(156)	-	96	PROJ# 137741 AT&T TRENCHING @ CARMEL CREEK RD
PACIFIC BELL TELEPHONE -	(155)	-	68	PROJ# 151325 AT&T TRENCHING JOB #6255221
PACIFIC BELL TELEPHONE -	(151)	-	96	PROJ# 137739 AT&T TRENCHING @ SAN DIEGUITO RD
PACIFIC BELL TELEPHONE -	(151)	-	96	PROJ# 137750 AT&T TRENCHING @ NORTHSIDE DR
PACIFIC BELL TELEPHONE -	(149)	-	96	PROJ# 137764 AT&T TRENCHING @ LAUREL ST
PACIFIC BELL TELEPHONE -	(149)	-	96	PROJ# 137860 AT&T TRENCHING @ BOULDER LAKE
PACIFIC BELL TELEPHONE -	(67)	-	12	PROJ# 151134 AT&T TRENCHING @ JOB 6523853
PACIFIC BELL TELEPHONE -	(51)	-	68	PROJ# 151306 AT&T TRENCHING JOB 6255256
PACIFIC BELL TELEPHONE DBA AT&T	(2,348)	-	64	PROJ# 153002 AT&T TRENCHING @ SABRE SPRING
PACIFIC BELL TELEPHONE DBA AT&T	(2,150)	-	64	PROJ# 153509 AT&T TRENCHING FOR JOB # 6381449
PACIFIC BELL TELEPHONE DBA AT&T	(1,669)	-	64	PROJ# 152895 AT&T TRENCHING JOB #6390672
PACIFIC BELL TELEPHONE DBA AT&T	(1,224)	-	64	PROJ# 153487 AT&T TRENCHING FOR JOB # 6282918
PACIFIC BELL TELEPHONE DBA AT&T	(946)	-	64	PROJ# 152721 AT&T TRENCHING FOR JOB# 6393702
PACIFIC BELL TELEPHONE DBA AT&T	(843)	-	64	PROJ# 152988 AT&T TRENCHING @ CARMEL MTN & CUCA ST
PACIFIC BELL TELEPHONE DBA AT&T	(559)	-	64	PROJ# 153063 AT&T TRENCHING FOR JOB# 6397943
PACIFIC BELL TELEPHONE DBA AT&T	(450)	-	64	PROJ# 153079 AT&T TRENCHING FOR JOB# 5926089
PACIFIC BELL TELEPHONE DBA AT&T	(418)	-	64	PROJ# 153067 AT&T TRENCHING FOR JOB# 6248977
PACIFIC BELL TELEPHONE DBA AT&T	(384)	-	64	PROJ# 152705 AT&T TRENCHING JOB 6402878
PACIFIC BELL TELEPHONE DBA AT&T	(380)	-	64	PROJ# 153515 AT&T TRENCHING FOR JOB # 6518283
PACIFIC BELL TELEPHONE DBA AT&T	(366)	-	64	PROJ# 153059 AT&T TRENCHING FOR JOB# 60550432
PACIFIC BELL TELEPHONE DBA AT&T	(365)	-	64	PROJ# 153013 AT&T TRENCHING @ CONESTOGA
PACIFIC BELL TELEPHONE DBA AT&T	(359)	-	64	PROJ# 153009 AT&T TRENCHING @ CHEROKEE
PACIFIC BELL TELEPHONE DBA AT&T	(359)	-	64	PROJ# 153074 AT&T TRENCHING FOR JOB# 6385716
PACIFIC BELL TELEPHONE DBA AT&T	(339)	-	64	PROJ# 152709 AT&T TRENCHING FOR JOB# 6397735
PACIFIC BELL TELEPHONE DBA AT&T	(318)	-	64	PROJ# 152922 AT&T TRENCHING FOR JOB# 6385544
PACIFIC BELL TELEPHONE DBA AT&T	(291)	-	64	PROJ# 152991 AT&T TRENCHING @ COAST
PACIFIC BELL TELEPHONE DBA AT&T	(291)	-	64	PROJ# 153000 AT&T TRENCHING @ UNIVERSITY
PACIFIC BELL TELEPHONE DBA AT&T	(290)	-	64	PROJ# 153257 AT&T TRENCHING FOR JOB# 6509284
PACIFIC BELL TELEPHONE DBA AT&T	(287)	-	64	PROJ# 153101 AT&T TRENCHING FOR JOB# 6532827
PACIFIC BELL TELEPHONE DBA AT&T	(279)	-	64	PROJ# 152986 AT&T TRENCHING @ DEL CERRO
PACIFIC BELL TELEPHONE DBA AT&T	(266)	-	64	PROJ# 153268 AT&T TRENCHING FOR JOB# 6022447
PACIFIC BELL TELEPHONE DBA AT&T	(266)	-	64	PROJ# 153271 AT&T TRENCHING FOR JOB# 6561281
PACIFIC BELL TELEPHONE DBA AT&T	(263)	-	64	PROJ# 153071 AT&T TRENCHING FOR JOB# 6385716
PACIFIC BELL TELEPHONE DBA AT&T	(260)	-	64	PROJ# 153495 AT&T TRENCHING FOR JOB # 6383591
PACIFIC BELL TELEPHONE DBA AT&T	(256)	-	64	PROJ# 153504 AT&T TRENCHING FOR JOB # 6382844
PACIFIC BELL TELEPHONE DBA AT&T	(256)	-	64	PROJ# 153513 AT&T TRENCHING FOR JOB # 6384260
PACIFIC BELL TELEPHONE DBA AT&T	(224)	-	64	PROJ# 152995 AT&T TRENCHING @ COPLEY
PACIFIC BELL TELEPHONE DBA AT&T	(224)	-	64	PROJ# 153006 AT&T TRENCHING @ MAHAILA
PACIFIC BELL TELEPHONE DBA AT&T	(220)	-	64	PROJ# 152712 AT&T TRENCHING FOR JOB# 6022447
PACIFIC BELL TELEPHONE DBA AT&T	(220)	-	64	PROJ# 152920 AT&T TRENCHING FOR JOB# 6409248
PACIFIC BELL TELEPHONE DBA AT&T	(220)	-	64	PROJ# 153036 AT&T TRENCHING FOR JOB# 6264163
PACIFIC BELL TELEPHONE DBA AT&T	(216)	-	64	PROJ# 152890 AT&T TRENCHING JOB #6393852
PACIFIC BELL TELEPHONE DBA AT&T	(216)	-	64	PROJ# 153082 AT&T TRENCHING FOR JOB# 5938434
PACIFIC BELL TELEPHONE DBA AT&T	(212)	-	64	PROJ# 153492 AT&T TRENCHING FOR JOB # 6385784
PACIFIC BELL TELEPHONE DBA AT&T	(162)	-	64	PROJ# 153054 AT&T TRENCHING FOR JOB# 6514983
PACIFIC BELL TELEPHONE DBA AT&T	(157)	-	64	PROJ# 152992 AT&T TRENCHING @ SATURN
PACIFIC BELL TELEPHONE DBA AT&T	(157)	-	64	PROJ# 152993 AT&T TRENCHING @ FORDHAM
PACIFIC BELL TELEPHONE DBA AT&T	(156)	-	64	PROJ# 153064 AT&T TRENCHING FOR JOB# 6489402
PACIFIC BELL TELEPHONE DBA AT&T	(153)	-	64	PROJ# 152888 AT&T TRENCHING JOB #6046773
PACIFIC BELL TELEPHONE DBA AT&T	(153)	-	64	PROJ# 152893 AT&T TRENCHING JOB #6212394
PACIFIC BELL TELEPHONE DBA AT&T	(153)	-	64	PROJ# 152923 AT&T TRENCHING FOR JOB# 6561281
PACIFIC BELL TELEPHONE DBA AT&T	(150)	-	64	PROJ# 153068 AT&T TRENCHING FOR JOB# 6411652
PACIFIC BELL TELEPHONE DBA AT&T	(129)	-	64	PROJ# 153014 AT&T TRENCHING @ VIA ESPRILLO
PACIFIC BELL TELEPHONE DBA AT&T	(111)	-	64	PROJ# 153270 AT&T TRENCHING FOR JOB# 385544
PACIFIC BELL TELEPHONE DBA AT&T	(67)	-	32	PROJ# 155726 TIME WARNER TRENCHING @ TORREY CIRCLE
PACIFIC BELL TELEPHONE DBA AT&T	(51)	-	64	PROJ# 152652 AT&T TRENCHING JOB #6386845
PACIFIC BELL TELEPHONE DBA AT&T	(51)	-	64	PROJ# 153086 AT&T TRENCHING FOR JOB# 6255208
PACIFIC BELL TELEPHONE DBA: AT&T	(434)	-	48	PROJ# 195431 AT&T TRENCHING - 6537498 @ FAY AVE & SILVERADO ST
PACIFIC BELL TELEPHONE DBA: AT&T	(237)	-	48	PROJ# 159433 AT&T TRENCHING - 6439541 GLENDALE
PACIFIC BELL TELEPHONE DBA: AT&T	(199)	-	48	PROJ# 159432 AT&T TRENCHING - 6659924 @ CHURRITUCK RD
PACIFIC BELL TELEPHONE DBA: AT&T	(158)	-	48	PROJ# 159438 AT&T TRENCHING - 6659924 @ NARWHAL ST
PACIFIC BELL TELEPHONE DBA: AT&T	(158)	-	48	PROJ# 159443 AT&T TRENCHING - 6659924 @ SAUGERTIES AVE
PACIFIC BELL TELEPHONE DBA: AT&T	(158)	-	48	PROJ# 159441 AT&T TRENCHING - 6659924 @ SAUGERTIES AVE
PACIFIC BELL TELEPHONE DBA: AT&T	(156)	-	48	PROJ# 159430 AT&T TRENCHING - 6620333 @ CAMERINO RICO
PACIFIC BELL TELEPHONE DBA: AT&T	(82)	-	24	PROJ# 159428 AT&T TRENCHING - 6640030 @ RUE DENISE
PACIFIC BELL TELEPHONE DBA: AT&T	(54)	-	48	PROJ# 159437 AT&T TRENCHING - 6659924 @ SAUGERTIES AVE
PACIFIC BELL TELEPHONE DBA:AT&T	(2,777)	-	44	PROJ# 164745 AT&T TRENCHING FROST
PACIFIC BELL TELEPHONE DBA:AT&T	(1,210)	-	48	PROJ# 159346 AT&T TRENCHING - 6574005 @ VILLA LA JOLLA DR.
PACIFIC BELL TELEPHONE DBA:AT&T	(936)	-	48	PROJ# 159339 AT&T TRENCHING - 6564777 @ WESTMORE
PACIFIC BELL TELEPHONE DBA:AT&T	(903)	-	48	PROJ# 159354 AT&T TRENCHING - 6653648 @ JACKSON DR. & GOLFCREST
PACIFIC BELL TELEPHONE DBA:AT&T	(664)	-	48	PROJ# 159334 AT&T TRENCHING - 5935201 @ FENTON PKWY
PACIFIC BELL TELEPHONE DBA:AT&T	(659)	-	48	PROJ# 159352 AT&T TRENCHING - 6578185 @ FRIARS RD
PACIFIC BELL TELEPHONE DBA:AT&T	(639)	-	48	PROJ# 159353 AT&T TRENCHING - 6574139 @ LEBON ST.
PACIFIC BELL TELEPHONE DBA:AT&T	(421)	-	48	PROJ# 159348 AT&T TRENCHING - 6390093 @ 45TH ST.
PACIFIC BELL TELEPHONE DBA:AT&T	(360)	-	44	PROJ# 164626 AT&T TRENCHING AERO
PACIFIC BELL TELEPHONE DBA:AT&T	(315)	-	48	PROJ# 159336 AT&T TRENCHING - 6575332 @ MISSION GORGE RD
PACIFIC BELL TELEPHONE DBA:AT&T	(273)	-	48	PROJ# 159344 AT&T TRENCHING - 6606501 @ CLAIREMONT MESA DR
PACIFIC BELL TELEPHONE DBA:AT&T	(261)	-	48	PROJ# 159341 AT&T TRENCHING - 6397234 @ MISSION CENTER CT
PACIFIC BELL TELEPHONE DBA:AT&T	(261)	-	48	PROJ# 159347 AT&T TRENCHING - 5795198 @ HAZARD CENTER DR.
PACIFIC BELL TELEPHONE DBA:AT&T	(261)	-	48	PROJ# 159350 AT&T TRENCHING - 6386815
PACIFIC BELL TELEPHONE DBA:AT&T	(207)	-	48	PROJ# 159335 AT&T TRENCHING - 6592125 @ 60TH ST.

Applicants with Multiple Deficit Accounts totaling \$10,000 or more⁽¹⁾

As of June 30, 2009⁽²⁾

Applicant Name	Balance Due	Current ⁽³⁾ Period Deposits	Weeks in Deficit	Project Name
PACIFIC BELL TELEPHONE DBA:AT&T	(207)	-	48	PROJ# 159342 AT&T TRENCHING - 6587831 @ STANWELL ST.
PACIFIC BELL TELEPHONE DBA:AT&T	(193)	-	44	PROJ# 164629 AT&T TRENCHING HOTEL CIRCLE PL
PACIFIC BELL TELEPHONE DBA:AT&T	(49)	-	44	PROJ# 164630 AT&T TRENCHING HOTEL CIRCLE PL
PACIFIC BELL TELEPHONE/AT&T CA	(1,812)	-	60	PROJ# 154361 AT&T TRENCHING FOR INC 6536113
PACIFIC BELL TELEPHONE/AT&T CA	(1,471)	-	60	PROJ# 154723 AT&T TRENCHING FOR 6559332
PACIFIC BELL TELEPHONE/AT&T CA	(1,117)	-	60	PROJ# 154401 AT&T TRENCHING FOR INC 6554080
PACIFIC BELL TELEPHONE/AT&T CA	(609)	-	60	PROJ# 154355 AT&T TRENCHING FOR INC 6560993
PACIFIC BELL TELEPHONE/AT&T CA	(379)	-	60	PROJ# 154377 AT&T TRENCHING FOR INC 6537527
PACIFIC BELL TELEPHONE/AT&T CA	(343)	-	60	PROJ# 154323 AT&T TRENCHING FOR INC 6387045
PACIFIC BELL TELEPHONE/AT&T CA	(331)	-	60	PROJ# 154381 AT&T TRENCHING FOR INC 6536118
PACIFIC BELL TELEPHONE/AT&T CA	(236)	-	60	PROJ# 154260 AT&T TRENCHING FOR INC 6395222
PACIFIC BELL TELEPHONE/AT&T CA	(212)	-	60	PROJ# 154284 AT&T TRENCHING FOR INC 6410364
PACIFIC BELL TELEPHONE/AT&T CA	(169)	-	60	PROJ# 154376 AT&T TRENCHING FOR INC 6410364
PACIFIC BELL TELEPHONE/AT&T CA	(169)	-	60	PROJ# 154366 AT&T TRENCHING FOR 6575705
PACIFIC BELL TELEPHONE/AT&T CA	(169)	-	60	PROJ# 154364 AT&T TRENCHING FOR 6213911
PACIFIC BELL TELEPHONE/AT&T CA	(156)	-	60	PROJ# 154316 AT&T TRENCHING FOR INC 6215639
PACIFIC BELL TELEPHONE-	(1,667)	-	92	PROJ# 137513 AT&T TRENCHING @ADOLPHIA ST
PACIFIC BELL TELEPHONE-	(425)	-	88	PROJ# 139017 AT&T TRENCHING @PARKDALE AVE
PACIFIC BELL/DBA AT&T CA	(1,296)	-	60	PROJ# 154594 AT&T TRENCHING FOR JOB 6255256
PACIFIC BELL/DBA AT&T CA	(355)	-	60	PROJ# 154293 AT&T TRENCHING FOR JOB 6378923
PACIFIC BELL/DBA AT&T CA	(275)	-	60	PROJ# 154300 AT&T TRENCHING FOR INC 651196
PACIFIC BELL/DBA AT&T CA	(266)	-	60	PROJ# 154589 AT&T TRENCHING FOR JOB 5932256
PACIFIC BELL/DBA AT&T CA	(256)	-	60	PROJ# 154588 AT&T TRENCHING FOR JOB 6445402
PACIFIC BELL/DBA AT&T CA	(222)	-	60	PROJ# 154591 AT&T TRENCHING FOR JOB 6397857
PACIFIC BELL/DBA AT&T CA	(164)	-	60	PROJ# 154313 AT&T TRENCHING FOR JOB 6445236
PACIFIC BELL/DBA AT&T CA	(155)	-	60	PROJ# 154534 AT&T TRENCHING FOR JOB 6215637
PACIFIC BELL/DBA AT&T CA	(121)	-	60	PROJ# 154296 AT&T TRENCHING FOR JOB 6413138
PACIFIC BELL/DBA AT&T CA	(62)	-	60	PROJ# 154539 AT&T TRENCHING FOR JOB 6513711
PACIFIC BELL/DBA AT&T CA	(51)	-	60	PROJ# 154321 AT&T TRENCHING FOR JOB 6255211
PACIFIC BELL/DBA AT&T CA	(51)	-	60	PROJ# 154537 AT&T TRENCHING FOR JOB 6081268
PACIFIC BELL/DBA AT&T CA	(51)	-	60	PROJ# 154545 AT&T TRENCHING FOR JOB 6561301
PACIFIC BELL/DBA AT&T CA	(51)	-	60	PROJ# 154547 AT&T TRENCHING FOR JOB 6561303
PACIFIC BELL-DBA AT&T	(1,172)	-	52	PROJ# 158110 AT&T TRENCHING ALDERLAY
PACIFIC BELL-DBA AT&T	(736)	-	52	PROJ# 158112 AT&T TRENCHING CARMEL VALLEY
PACIFIC BELL-DBA AT&T	(302)	-	52	PROJ# 158127 AT&T TRENCHING - 6613026
PACIFIC BELL-DBA AT&T	(292)	-	52	PROJ# 158129 AT&T TRENCHING - 660033
PACIFIC BELL-DBA AT&T	(289)	-	52	PROJ# 158109 AT&T TRENCHING @ THURSTON
PACIFIC BELL-DBA AT&T	(284)	-	52	PROJ# 158192 AT&T TRENCHING - 6410467
PACIFIC BELL-DBA AT&T	(278)	-	52	PROJ# 158113 AT&T TRENCHING MILTON
PACIFIC BELL-DBA AT&T	(102)	-	52	PROJ# 158186 AT&T TRENCHING - 6548876
PACIFIC BELL-DBA AT&T	(102)	-	52	PROJ# 158220 AT&T TRENCHING - 6610372
PACIFIC BELL-DBA AT&T	(102)	-	52	PROJ# 158225 AT&T TRENCHING - 6652485
PACIFIC BELL-DBA AT&T	(102)	-	52	PROJ# 158227 AT&T TRENCHING - 6586897
PACIFIC BELL-DBA AT&T	(100)	-	52	PROJ# 158218 AT&T TRENCHING - 6603152
PACIFIC BELL-DBA AT&T CA	(2,148)	-	44	PROJ# 162462 AT&T TRENCHING - 6561292
PACIFIC BELL-DBA AT&T CA	(1,340)	-	44	PROJ# 163941 AT&T TRENCHING - 6532827
PACIFIC BELL-DBA AT&T CA	(1,235)	-	44	PROJ# 163946 AT&T TRENCHING - 6390818
PACIFIC BELL-DBA AT&T CA	(1,057)	-	44	PROJ# 163932 AT&T TRENCHING - 6081531
PACIFIC BELL-DBA AT&T CA	(555)	-	44	PROJ# 163929 AT&T TRENCHING - 6666322
PACIFIC BELL-DBA AT&T CA	(308)	-	40	PROJ# 163937 AT&T TRENCHING - 6398039
PACIFIC BELL-DBA AT&T CA	(284)	-	44	PROJ# 163924 AT&T TRENCHING - 6665352
PACIFIC BELL-DBA AT&T CA	(197)	-	44	PROJ# 163546 AT&T TRENCHING - 6695981
PACIFIC BELL-DBA AT&T CA	(104)	-	44	PROJ# 162465 AT&T TRENCHING - 5794476
PACIFIC BELL-DBA AT&T CA	(104)	-	44	PROJ# 162468 AT&T TRENCHING - 6215469
PACIFIC BELL-DBA AT&T CA	(104)	-	44	PROJ# 163542 AT&T TRENCHING - 6215633
PACIFIC BELL-DBA AT&T CA	(104)	-	44	PROJ# 163695 AT&T TRENCHING - 6653574
PACIFIC TELEPHONE	(529)	-	36	PROJ# 168224 AT&T TRENCHING #7017735
PACIFIC TELEPHONE	(296)	-	36	PROJ# 167985 AT&T TRENCHING #6515510-2
PACIFIC TELEPHONE	(246)	-	36	PROJ# 168047 AT&T TRENCHING #6686214
PACIFIC TELEPHONE	(219)	-	36	PROJ# 168144 AT&T TRENCHING #6684946
PACIFIC TELEPHONE	(200)	-	36	PROJ# 168050 AT&T TRENCHING #6686214
PACIFIC TELEPHONE	(147)	-	36	PROJ# 168017 AT&T TRENCHING #6686212
PACIFIC TELEPHONE	(142)	-	36	PROJ# 168009 AT&T TRENCHING #7021855
PACIFIC TELEPHONE	(133)	-	36	PROJ# 168227 AT&T TRENCHING #6670972
PACIFIC TELEPHONE	(130)	-	36	PROJ# 168133 AT&T TRENCHING #6669942
PACIFIC TELEPHONE	(107)	-	36	PROJ# 167987 AT&T TRENCHING #6666021
PACIFIC TELEPHONE	(107)	-	36	PROJ# 168003 AT&T TRENCHING #6641812
PACIFIC TELEPHONE	(100)	-	36	PROJ# 168222 AT&T TRENCHING #6589978
PACIFIC TELEPHONE	(30)	-	36	PROJ# 167986 AT&T TRENCHING #6687682
PAIFIC TELEPHONE	(392)	-	40	PROJ# 165946 AT&T TRENCHING #6672948
PAIFIC TELEPHONE	(392)	-	40	PROJ# 165958 AT&T TRENCHING #6677803
PAIFIC TELEPHONE	(188)	-	40	PROJ# 165949 AT&T TRENCHING #6677781
PAIFIC TELEPHONE	(188)	-	40	PROJ# 165961 AT&T TRENCHING #6677841
PAIFIC TELEPHONE	(54)	-	40	PROJ# 165954 AT&T TRENCHING #6672138
Subtotal	(347,538)	-		
PARDEE CONSTRUCTION COMPANY	(2,975)	-	44	MONARCH ESTATES UNIT 3
PARDEE CONSTRUCTION COMPANY	(2,651)	-	32	EMPLOYMENT CENTER DEV UNIT 2A PARDEE CONSTR CO
PARDEE CONSTRUCTION COMPANY	(716)	-	172	SABRE SPRINGS CPA
PARDEE CONSTRUCTION COMPANY	(674)	-	72	CARMEL VALLEY NEIGHBORHOOD 10 UNITS 13,14 & 21
PARDEE CONSTRUCTION COMPANY	(648)	-	32	L.L. ADJ & CONSOLIDATION CAPIORN WAY & WESTVIEW
PARDEE CONSTRUCTION COMPANY	(154)	-	112	CREEKVIEW SOUTH TM/PRD PARDEE
PARDEE CONSTRUCTION COMPANY	(81)	-	76	CARMEL VALLEY NEIGHBORHOOD 10 UNITS 3 & 4 PROJ #114085
PARDEE CONSTRUCTION COMPANY	(71)	-	276	GRADING AND P/I PLAN FOR DENNERY RANCH, UNIT 1A

Applicants with Multiple Deficit Accounts totaling \$10,000 or more⁽¹⁾

As of June 30, 2009⁽²⁾

Applicant Name	Balance Due	Current ⁽³⁾ Period Deposits	Weeks in Deficit	Project Name
PARDEE HOMES	(68,877)	-	28	PTS #60644 CARMEL MOUNTAIN ROAD PHASE I
PARDEE HOMES	(5,430)	-	80	PROJ# 129187 CAMINO SANTE FE PL
PARDEE HOMES	(3,920)	-	16	P/I AND GRADING FOR NCFUA,CARMEL VALLEY ROAD
PARDEE HOMES	(3,290)	-	172	DENNERY VILLAGE PA 2/3 / PDP / EASEMENT
PARDEE HOMES	(3,094)	-	288	OTAY MESA CPA
PARDEE HOMES	(2,654)	-	8	PACIFIC HIGHLANDS RANCH IMPROVEMENT PLANS
PARDEE HOMES	(2,457)	-	12	PTS #52081 PACIFIC HIGHLAND RANCH
PARDEE HOMES	(1,065)	-	56	PTS#148166 BASIN 4 A PM
PARDEE HOMES	(978)	-	64	PROJ #123143 CRESCENT HEIGHTS U1 FM/G/PI
PARDEE HOMES	(693)	(5,000)	8	PACIFIC HIGHLANDS RANCH UNIT-5 / IMPROVEMENT PLANS
PARDEE HOMES	(679)	-	20	CARMEL VALLEY NEIGHBORHOOD 10 UNITS 16 & 17
PARDEE HOMES	(419)	-	60	PROJ# 126895 SHAW LORENZ
PARDEE HOMES	(295)	-	16	PACIFIC HIGHLANDS RANCH GRADING
PARDEE HOMES	(62)	-	4	PHR UNIT 4 GRADING & IMPROVEMENT PLANS
PARDEE HOMES	(35)	-	112	PTS. #10046 CASTLEROCK TM
PARDEE HOMES	(33)	-	4	PTS #32814 CARMELVALLEY NEIGHBORHOOD 10 UNIT 14S
Subtotal	(101,953)	(5,000)		
SAN DIEGO COMMUNITY COLLEGE DIST	(14,380)	(18,869)	48	PROJ #108283 MESA COLLEGE ROW
SAN DIEGO COMMUNITY COLLEGE DIST	(7,035)	(2,940)	16	PROJ #103979 SKILLS CENTER PL
SAN DIEGO COMMUNITY COLLEGE DIST	(5,587)	(2,359)	32	PROJ# 151956 MIRAMAR COLLEGE DRIVEWAY
SAN DIEGO COMMUNITY COLLEGE DIST	(2,408)	-	8	PROJ# 129950 CITY COLLEGE VTC PI
SAN DIEGO COMMUNITY COLLEGE DIST	(672)	(686)	56	PTS# 98799 WEST CITY CENTER
SAN DIEGO COMMUNITY COLLEGE DIST	(228)	(128)	16	PROJ# 157141 SDCCD WEST CITY CAMPUS
SAN DIEGO COMMUNITY COLLEGE DIST	(884)	-	4	PROJ# 174847 15TH STREET SEWER PUBLIC IMPROVEMENT
Subtotal	(31,194)	(24,981)		
SAN DIEGO UNIFIED SCHOOL	(1,000)	-	228	PTS #11135 WEBSTER ELEMENTARY IMPROVEMENT PLANS
SAN DIEGO UNIFIED SCHOOL DIST	(4,519)	-	24	PROJ# 160940 JEFFERSON ELEM. PM/ROW VACATION
SAN DIEGO UNIFIED SCHOOL DIST	(829)	-	200	FIRE WATER EXTENSION IN THE ALLEY IMPROVEMENT PLANS
SAN DIEGO UNIFIED SCHOOL DIST	(268)	-	496	GARFIELD ELEMENTARY SCHOOL
SAN DIEGO UNIFIED SCHOOL DISTRICT	(10,559)	-	80	PTS #72763 SHERMAN ELEMENTARY SCHOOL PL
SAN DIEGO UNIFIED SCHOOL DISTRICT	(2,000)	-	4	PTS #5318 LINCOLN HIGH SCHOOL
SAN DIEGO UNIFIED SCHOOL DISTRICT	(1,144)	-	188	JACKSON-MANN SCHOOLS IMPROVEMENT PLANS PROJ #10140
SAN DIEGO UNIFIED SCHOOL DISTRICT	(843)	-	304	SESSIONS ELEMENTARY IMPROVEMENT PLANS
SAN DIEGO UNIFIED SCHOOL DISTRICT	(546)	-	136	PTS #24307 MEADELEMENTARY SCHOOL ROUGH GRADING
SAN DIEGO UNIFIED SCHOOL DISTRICT	(396)	-	56	PTS #17942 FRANKLIN AREA SCHOOL
SAN DIEGO UNIFIED SCHOOL DISTRICT	(387)	-	188	PTS #65684 PRESCHOOL AT NTC
SAN DIEGO UNIFIED SCHOOL DISTRICT	(331)	-	244	DEWEY ELEMENTARY IMPROVEMENT PLANS
SAN DIEGO UNIFIED SCHOOL DISTRICT	(310)	-	248	PTS #17936 OCEAN BEACH ELEMENTARY SCHOOL
SAN DIEGO UNIFIED SCHOOL DISTRICT	(255)	-	180	CHOLLAS ELEMENTARY SCHOOL/ IMPROVEMENT PLANS
SAN DIEGO UNIFIED SCHOOL DISTRICT	(126)	-	300	TOLER ELEMENTARY IMPROVEMENT PLANS
SAN DIEGO UNIFIED SCHOOL DISTRICT	(74)	-	16	PROJ# 161614 JEFFERSON ELEM SCHOOL PI
SAN DIEGO CITY SCHOOLS	(219)	-	156	FAIRBROOK ESTATES EOT / PRD / TM
Subtotal	(23,808)	-		
SAN YSIDRO SCHOOL DISTRICT	(20,308)	-	64	PROJ# 150599 WILLOW SCHOOL IMPROVEMENT
SAN YSIDRO SCHOOL DISTRICT	(574)	-	192	IMPROVEMENT PLANS
SAN YSIDRO SCHOOL DISTRICT	(129)	-	160	PTS#86724 OCEAN VIEW HILL SCHOOL
Subtotal	(21,011)	-		
SANDAG	(30,244)	-	44	PROJ# 122841 RANCHO BERNARDO TRANSIT STA
SANDAG	(23,023)	-	24	PROJ# 140095 SUPER LOOP TRANSIT PROJEC
SANDAG	(63)	-	4	PROJ# 122843 SABRE SPRING TRANSIT STA
Subtotal	(53,330)	-		
SANTA LUZ, LLC	(5,935)	-	196	PTS #27268 BMRUNIT 1-A FINAL MAP
SANTALUZ HOMES, LLC	(37)	-	72	PTS #50397 BALDWINLOT LINE ADJUSTMENT
SANTALUZ LLC	(1,623)	-	12	GRADING FOR BLACK MOUNTAIN RANCH EAST PHASE 3
SANTALUZ LLC	(1,419)	-	52	BLACK MOUNTAIN RANCH UNIT # 4&5
SANTALUZ LLC	(656)	-	188	BLACK MOUNTAIN RANCH IMPROVEMENTPLANS FOR SANDIEGUITO ROAD
SANTALUZ LLC	(223)	-	12	PARCEL MAP UNIT 7 ENGINEERING
SANTALUZ, LLC	(4,339)	-	16	BLACK MOUNTAIN RANCH P/I GRADING & STREET DEDIC ACTION
Subtotal	(14,231)	-		
SIGSBEE ROW LLC	(12,338)	-	96	PTS#77618 SIGSBEE ROW HOMES, LLC
SIGSBEE ROW LLC	(302)	-	116	PTS #60907 SIGSBEE ROW PDP & TENT MAP
Subtotal	(12,640)	-		
SPRINT	(1,458)	-	52	PROJ #107350 CARMEL MOUNTAIN RD SD55
SPRINT NEXTEL	(4,025)	-	120	PROJ #114294 SPRINT ALTA VIEW ROW
SPRINT NEXTEL	(1,407)	-	116	PROJ #115935 SPRINT NEXTEL
SPRINT NEXTEL	(717)	-	4	PROJ# 147270 SPRINT MADDOX PARK
SPRINT NEXTEL	(103)	-	180	PTS# 83699 SPRINT RANCHO SF FARMS SCR
SPRINT PCS	(14,035)	-	120	PTS#84346 SPRINT EL CAMINO REAL SD 906-E
SPRINT PCS	(922)	-	176	PTS #57634 SPRINT PCS DEL MAR MESA ROAD
SPRINT PCS	(729)	(2,226)	60	PROJ #122046 SPRINT SANTA LUZ
SPRINT PCS	(76)	-	212	PTS # 70707 SPRINT PCS-BLOCK PARTY SD028
SPRINT SPECTRUM, LP	(848)	-	108	PTS #55804/ELDER STREET SPRINT PCS
NEXTEL	(277)	-	224	NEXTEL GONZALES CANYON TELECOM
NEXTEL COMMUNICATIONS	(2,303)	-	288	OCEAN BEACH GRADING & IMPROVEMENT PLANS
NEXTEL COMMUNICATIONS	(17)	-	220	PTS #34460 NEXTEL MIRA MESA
Subtotal	(26,916)	(2,226)		

Applicants with Multiple Deficit Accounts totaling \$10,000 or more⁽¹⁾

As of June 30, 2009⁽²⁾

Applicant Name	Balance Due	Current ⁽³⁾ Period Deposits	Weeks in Deficit	Project Name
UNIVERSITY OF CALIFORNIA	(498)	-	156	LDR & PACU SURGE SPACE / IMPROVEMENT PLANS
REGENTS OF UCSD	(12,659)	-	372	GRADING AND PI FOR NORTH TORREY PINES RD.
REGENTS OF UCSD	(35)	-	36	PROJ# 151338 TORREY PINES ROAD MEDIUM PI
Subtotal	(13,192)	-		
TIME WARNER CABLE	(1,681)	-	56	PROJ# 155930 TO,E WARMER TRENCHING PACIFIC MESA BLVD
TIME WARNER CABLE	(765)	-	56	PROJ# 155951 TIME WARNER TRENCHING GOLD COAST DR.
TIME WARNER CABLE	(619)	-	48	PROJ# 160480 TW TRENCHING @ HIBERT
TIME WARNER CABLE	(588)	-	56	PROJ# 155955 TIME WARNER TRENCHING WILLOW CREEK RD
TIME WARNER CABLE	(481)	-	56	PROJ# 156417 TIME WARNER TRENCHING
TIME WARNER CABLE	(402)	-	60	PROJ# 155152 TIME WARNER CABLE CAMPUS POINT
TIME WARNER CABLE	(329)	-	56	PROJ# 154888 TIME WARNER TRENCHING @ RUFFNER ST.
TIME WARNER CABLE	(254)	-	56	PROJ# 155914 TIME WARMER TRENCHING POLICE ACADEMY
TIME WARNER CABLE	(197)	-	32	PTS #170075 TIME WARNER TRENCHING @ ALTA BAHIA
TIME WARNER CABLE	(170)	-	56	PROJ# 156381 TIME WARMER TRENCHING
TIME WARNER CABLE CABLE	(599)	-	52	PROJ# 158847 TIME WARNER @ CORNERSTONECT
TIME WARNER CABLE CABLE	(354)	-	52	PROJ# 158849 TIME WARNER @ FLANDER DR
TIME WARNER CABLE CABLE	(240)	-	52	PROJ# 158844 TIME WARNER @ CRESTA CT
TIME WARNER CABLE SAN DIEGO	(2,702)	-	40	PROJ# 167218 TIME WARNER TRENCHING @ WORLD TRADE CENTER
TIME WARNER CABLE SAN DIEGO	(2,064)	-	28	PROJ# 170104 TIME WARNER TRENCHING @ NANCY RIDGE
TIME WARNER CABLE SAN DIEGO	(1,820)	-	52	PROJ# 157492 FASHION WALK
TIME WARNER CABLE SAN DIEGO	(1,330)	-	48	PROJ# 162596 TIME WARNER TRENCHING @ GRANDEE PL
TIME WARNER CABLE SAN DIEGO	(1,238)	-	84	PROJ# 142620 TIME WARNER TRENCHING AT CAMPUS POINT
TIME WARNER CABLE SAN DIEGO	(1,063)	-	64	PROJ# 151287 TIME WARNER TRENCHING @ VISTA SORRENTO
TIME WARNER CABLE SAN DIEGO	(991)	-	60	PROJ# 154877 TIME WARNER TRENCHING @ CARMEL MTN RD
TIME WARNER CABLE SAN DIEGO	(926)	-	44	PROJ# 163232 TIME WARNER TRENCHING @ AERO DR
TIME WARNER CABLE SAN DIEGO	(844)	-	68	PROJ# 146580 TIME WARNER TRENCHING @ PENASQUITOS
TIME WARNER CABLE SAN DIEGO	(744)	-	80	PROJ #145649 TIME WARNER TRENCHING AT WAPLES
TIME WARNER CABLE SAN DIEGO	(741)	-	56	PROJ# 156395 TIME WARNER TRENCHING @ CARROLL PARK DR.
TIME WARNER CABLE SAN DIEGO	(687)	-	40	PROJ# 165125 TIME WARNER TRENCHING @ EXECUTIVE DR
TIME WARNER CABLE SAN DIEGO	(642)	-	88	PROJ# 141596 TIME WARNER TRENCHING AT HIBERT
TIME WARNER CABLE SAN DIEGO	(627)	-	36	PROJ # 168950 TIME WARNER TRENCHING @ CAMINITO CEDROS
TIME WARNER CABLE SAN DIEGO	(614)	-	56	PROJ# 154405 TIME WARNER TRENCHING @ TORREY VILLAS
TIME WARNER CABLE SAN DIEGO	(607)	-	76	PROJ# 147637 TIME WARNER TRENCHING @ EASTGATE MALL
TIME WARNER CABLE SAN DIEGO	(552)	-	88	PROJ# 141592 TIME WARNER TRENCHING AT TOWNE CENTER DR
TIME WARNER CABLE SAN DIEGO	(535)	-	44	PROJ# 164367 TIME WARNER TRENCHING @ MAYA LINDA RD
TIME WARNER CABLE SAN DIEGO	(530)	-	84	PROJ# 143001 TIME WARNER TRENCHING AT KESLING
TIME WARNER CABLE SAN DIEGO	(523)	-	84	PROJ# 142631 TIME WARNER TRENCHING AT BALBOA AVE
TIME WARNER CABLE SAN DIEGO	(514)	-	84	PROJ# 143009 TIME WARNER TRENCHING AT GOLDEN HAVEN
TIME WARNER CABLE SAN DIEGO	(508)	-	44	PROJ# 162604 TIME WARNER TRENCHING @ ALTA LA JOLLA DR.
TIME WARNER CABLE SAN DIEGO	(418)	-	48	PROJ# 162598 TIME WARNER TRENCHING @ LOS ALTOS RD
TIME WARNER CABLE SAN DIEGO	(402)	-	36	PROJ# 139308 TIME WARNER TRENCHING @ GARNET AVE
TIME WARNER CABLE SAN DIEGO	(378)	-	72	PTS #146585 TIME WARNER TRENCHING AT PRAVO
TIME WARNER CABLE SAN DIEGO	(367)	-	36	PROJ# 165941 TIME WARNER CABLE TRENCHING@ LINDA VISTA
TIME WARNER CABLE SAN DIEGO	(336)	-	64	PROJ# 150890 TIME WARNER TRENCHING @ CORNERSTONE
TIME WARNER CABLE SAN DIEGO	(274)	-	48	PROJ# 160246 TIME WARNER TRENCHING @ WAPLES
TIME WARNER CABLE SAN DIEGO	(267)	-	68	PROJ# 149665 TIME WARNER TRENCHING@ PROSPECT
TIME WARNER CABLE SAN DIEGO	(263)	-	48	PROJ# 162601 TIME WARNER TRENCHING @ FLANDERS DR.
TIME WARNER CABLE SAN DIEGO	(238)	-	28	PROJ# 170114 TIME WARNER TRENCHING @ CHILDRENS WAY
TIME WARNER CABLE SAN DIEGO	(204)	-	68	PROJ# 149653 TIME WARNER TRENCHING@ CORNERSTONE
TIME WARNER CABLE SAN DIEGO	(193)	-	76	PTS #147635 TIME WARNER TRENCHING AT CARMEL VISTA ROAD
TIME WARNER CABLE SAN DIEGO	(175)	-	68	PROJ# 149667 TIME WARNER TRENCHING@ TORREY PINES RD
TIME WARNER CABLE SAN DIEGO	(100)	-	36	PROJ# 163361 TIME WARNER CABLE TRENCHING@ FAY ST
TIME WARNER CABLE SAN DIEGO	(100)	-	36	PROJ# 163363 TIME WARNER CABLE TRENCHING@ SEQUENCE DR
TIME WARNER CABLE SAN DIEGO	(90)	-	68	PTS #146594 TIME WARNER TRENCHING AT LANSDALE
TIME WARNER CABLE SAN DIEGO	(76)	-	76	PROJ# 139311 TIME WARNER TRENCHING @ SHERATON LA JOLLA
Subtotal	(31,362)	-		
T-MOBILE	(5,350)	-	48	PROJ# 140708 SD 06620 BABAUTA ROW
T-MOBILE	(4,396)	-	8	PROJ #100005 T-MOBILE ROLAND
T-MOBILE	(649)	-	76	PROJ# 145252 T-MOBILE THE PLUNGE SCR
T-MOBILE	(199)	-	72	PROJ# 144291 T-MOBILE SPORTS ARENA
T-MOBILE	(172)	(3,589)	12	PROJ #102315 T-MOBILE REGENTS
T-MOBILE	(53)	-	4	PROJ #98370 T-MOBILE SYCAMORE LANDFIL
T-MOBILE USA	(127)	-	36	PROJ# 156870 T-MOBILE
T-MOBILE-TIM KOLSET	(152)	-	48	PROJ# 144139 T-MOBILE MISSION VALLEY
Subtotal	(11,098)	(3,589)		
VERIZON WIRELESS	(3,562)	-	12	PTS#88040 VERIZON
VERIZON WIRELESS	(2,091)	-	8	PROJ# 174343 VZ: "MORAGA" - NUP
VERIZON WIRELESS	(1,536)	-	4	PROJ# 163017 VERIZON SCRIPPS GREEN CUP
VERIZON WIRELESS	(1,360)	-	16	PROJ# 150220 VZ: CANYON CREST NUP
VERIZON WIRELESS	(1,221)	-	20	PROJ# 166833 VZ SEA WORLD CUP
VERIZON WIRELESS	(826)	-	4	PTS# 180059 VZ BEELER CANYON
Subtotal	(10,595)	-		
VILLAGE PROPERTIES	(13,314)	-	56	CARMEL VALLEY NEIGHBRD 1 UNIT 14 BALDWIN BUILDING
VILLAGE PROPERTIES	(992)	-	296	CARMEL VALLEY NEIGHBOR HOOD 4, UNIT 5
VILLAGE PROPERTIES	(934)	-	48	CARMEL VALLEY NEIGHBOR 5 THE BALDWIN COMPANY
Subtotal	(15,240)	-		

Applicants with Multiple Deficit Accounts totaling \$10,000 or more⁽¹⁾As of June 30, 2009⁽²⁾

Applicant Name	Balance Due	Current ⁽³⁾ Period Deposits	Weeks in Deficit	Project Name	
WINTEN AMERICA	(7,262)	-	76	PROJ# 138481	RIVA MIXED-USE
WINTEN AMERICA	(4,379)	-	24	PROJ# 161878	ALTAIR
Subtotal	(11,641)	-			
WORLD PETROL	(1,375)	-	60	PROJ# 153128	WORLD PETRO-SCR-NO.2
WORLD PETROL	(295)	-	144	PTS #32284	CALIMART III
WORLD PETROL, III	(12,327)	-	52	PROJ #112677	WORLD PETROL III GRADING PI
Subtotal	(13,997)	-			
Total	\$ (1,168,309)	\$ (45,396)			

Notes:⁽¹⁾ Does not include any unpaid account referred to the Delinquent Accounts Program.⁽²⁾ Any payments received after June 30, 2009 are not reflected here.⁽³⁾ Current Period Deposits reflects payments made by the applicant in the four week period preceding June 30, 2009. Therefore, even though the project account was in deficit as of June 30, 2009, the applicant had made a current payment. A project account in deficit for many weeks or months does not always mean the applicant isn't making payments.

Applicants with One Deficit Account of \$10,000 or more⁽¹⁾As of June 30, 2009⁽²⁾

Applicant Name	Balance Due	Current ⁽³⁾ Period Deposits	Weeks in Deficit	Project Name
PHILIP D. TAYLOR	\$ (35,598)	\$ -	100	PTS#86511 PESCADERO HOUSE
STERLING-SD STATE 2, L.P.	(29,825)	(17,629)	20	PROJ# 157028 ALVARADO APARTMENTS
MICHAEL CREW COMMERCIAL DEVPMT.	(24,723)	-	128	PTS# 25311 OLD EL CAMINO REAL PL.
PALOMAR POMERADO HEALTH	(23,298)	-	12	PROJ# 129854 COMMUNITY WELLNESS CAMPUS
THE POINTE AT BALBOA	(21,807)	-	60	PTS #46562 VANTAGE
PROTEA FLOWER MALL, LLC	(21,487)	(8,601)	20	PTS# 172026 FLOWER HILL PROMONADE CDP
INDIVIDUAL ⁽⁴⁾	(21,427)	-	80	PTS# 145713 INDIVIDUAL RESIDENCE
ABBOTT & SARATOGA LLC	(20,734)	-	72	PROJ# 140430 OCEAN PARK VILLAS MW/ST VACATION
FAIRBANKS COUNTRY CLUB	(20,669)	-	188	FAIRBANKS CO. CLUB GOLF COURSE / GRADING PLANS PROJ #6250
PACIFIC COAST ASSETS, LLC	(18,873)	-	180	PTS #41907 PACIFICCOAST OFFICE BUILDING
UHC 00409 SAN DIEGO LP	(18,815)	-	4	PTS# 174619 CROSSINGS AT MARKET ST
IMPERIAL MARKET INVESTORS, LLC	(17,725)	-	24	PROJ# 168264 FARMER'S MARKET CUP
UNITED DOMINION, LP	(17,056)	-	20	PROJ #144836 THE SUMMIT AT MISSION BAY
INDIVIDUAL ⁽⁴⁾	(15,814)	-	288	INDIVIDUAL RESIDENCE NDP / VAR
DEL MAR WINDMILL ESTATES	(15,653)	-	32	PROJ# 138908 4660 LANSDALE DRIVE FM
RICHARD STEGNER	(14,376)	(1,000)	188	PTS85948 ;85950 ;85951 ;85955 ; 86056
DALE WALKER	(14,118)	(10,551)	36	PROJ# 166229 VILLAGE LINDO PASEO
VISTA GRANDE APARTMENTS, L.P.	(13,912)	-	48	PTS# 976654 5411 SANTA MARGARITA
ASPEN CREEK, LLC	(13,729)	(16,649)	12	CARROLL CANYON BUSINESS PARK
COUNTY OF SAN DIEGO	(13,527)	-	44	PROJ #117239 OTAY TRAIL GRADING
OTAY -T J VENTURE LLC	(13,034)	(8,590)	24	PROJ# 169653 SD-TJ CROSS BORDER FACILITY
CITY OF LEMON GROVE	(12,871)	-	28	PROJ# 154354 LEMON GROVE AVE. SEWER MAIN
LA JOLLA PACIFIC DEV GROUP, INC	(12,858)	-	88	PTS #11896 3RD & UNIVERSITY
JACOB HEALTH CENTER, LLC	(12,714)	-	36	PTS #146595 4075 54TH STREET TM/PDP/CUP
REAL ESTATE ASSETS DEPARTMENT	(12,223)	-	72	PTS #147935 JAMACHA/CARDIFF
FLORIDA STREET HOUSING ASSOC. LP	(12,182)	-	20	PROJ# 175288 FLORIDA STREET APARTMENTSSDP
OM HAZARD, LLC	(11,411)	-	4	PTS #146803 HAZARD CENTER REDEVELOPMENT
CEDAR GATEWAY, LP	(10,689)	-	12	PROJ# 169936 6TH & CEDAR PL
CAZ JOHNSON	(10,148)	-	396	HOME AVE SDP/PM/SV
Total	\$ (501,296)	\$ (63,021)		

Notes:

⁽¹⁾ Does not include any unpaid account referred to the Delinquent Accounts Program.⁽²⁾ Any payments received after June 30, 2009 are not reflected here.⁽³⁾ Current Period Deposits reflects payments made by the applicant in the four week period preceding June 30, 2009. Therefore, even though the project account was in deficit as of June 30, 2009, the applicant had made a current payment. A project account in deficit for many weeks or months does not always mean the applicant isn't making payments.⁽⁴⁾ This project is for a personal residence and the applicant is an individual. The Office of the City Attorney advised that names of individuals should not be disclosed.



THE CITY OF SAN DIEGO

M E M O R A N D U M

DATE: December 2, 2009

TO: Eduardo Luna, City Auditor

FROM: Kelly Broughton, Development Services Director

SUBJECT: Response to the Performance Audit of the City Treasurer's Delinquent Accounts Program – Development Services Department Accounts

The Development Services Department, City Treasurer Department and the OneSD Project Director have reviewed the audit report titled "Performance Audit of the City Treasurer's Delinquent Accounts Program – Development Services Department Accounts", and the following comments are in response to the report's recommendations:

Recommendations for the Development Services Department

Recommendation 1: Review current deficit account balances and immediately refer existing past due accounts to the Treasurer's Delinquent Accounts Program.

Response: Agree with recommendation. Once the criterion and timelines from Recommendation No. 2 below are developed, the department will begin processing delinquent accounts to the Treasures Delinquent Accounts Program.

Recommendation 2: Establish appropriate criterion and timelines that will trigger Fiscal Services generate an ARIS invoice¹⁴ with automatic referral to the Treasurer's Delinquent Accounts Program of unpaid invoices after the invoice due date. If the timeline for referral exceeds 30 days past due, request approval for a more appropriate time frame from the City Treasurer per City regulations. Centralize the deficit account invoicing process in DSD's financial services and eliminate courtesy and collection letters as well as PTS invoices.

Response: Agree with recommendation. DSD anticipates full implementation of this recommendation at the same time of implementation of the OneSD accounts receivable module in March 2010. DSD will also modify written department procedures to match the revised process and rules.

Recommendation 3: Establish procedures for DSD cashiers to coordinate with financial services to ensure payments received on ARIS invoices are properly applied to the invoice so paid accounts are not referred to the Treasurer's Delinquent Accounts Program in error.

Response: Agree with recommendation. This recommendation will be implemented at the same time as Recommendation No. 2 above.

Recommendation 4: Establish procedures and strengthen controls in PTS that prevent DSD cashiers from accepting payment on past due ARIS invoices (those referred to Treasurer's Delinquent Accounts Program). Instruct applicants with referred accounts to make payment at Treasurer's Delinquent Accounts Program.

Response: Agree with recommendation. This recommendation will be implemented at the same time as Recommendation No. 2 above.

Recommendation 5: Reinstate monthly statements, for all applicants, which contain enough detail regarding charges (staff person name, description of work performed, hours spent and amount, etc.), as well as language stating that applicants have a limited amount of time to dispute any charges. Monthly statements for accounts in deficit should also contain a remittance advice, the deficit amount, the minimum positive balance required, a due date and language that clearly states that unpaid amounts will be referred to Treasurer's Delinquent Accounts Program (based on the established criterion and timeline from #2 above).

Response: Agree with recommendation. This recommendation will be completed by February 2010 upon full implementation of the HCM module in OneSD.

Recommendation 6: Implement a late penalty fee to ensure more timely payments on deficit accounts.

Response: Agree with recommendation. DSD will work with City Treasurer and City Attorney's Office on ability to use a currently established City late fee. If one must be approved by City Council to implement this recommendation, this will be done in association with a fee study to look at converting some deposit accounts to flat fees. This fee study will be completed by 12/31/10.14 SAP invoice after ARIS is replaced by SAP during calendar year 2010.

Recommendation 7: Require Development Project Managers (DPMs) as well as any other City staff person acting as lead on deposit projects review labor charges on all relevant projects at least biweekly to help identify and correct potentially erroneous charges prior to the issuance of monthly statements.

Response: Agree with recommendation. DSD will work with OneSD implementation team to develop process by March 2010.

Recommendation 8: Evaluate the adequacy of Deposit Account initial deposit amounts as well as minimum required balance amounts to help minimize the frequency and speed at which Deposit Accounts fall into deficit.

Response: Agree with recommendation. As part of past fee proposal, initial deposit amount and minimum account balance were increased. Additional study will be performed as part of the future fee study discussed in the response to Recommendation No. 6 above.

Recommendation 9: Implement a policy that would prohibit applicants with an existing deficit account to open another Deposit Account until the existing deficit is paid in full.

Response: Agree with recommendation. DSD will work with City Attorney and Treasurer on the authority needed to implement this recommendation. This may not solve the entire problem if new accounts of entities in deficit open their accounts with a different alias.

Recommendation 10: Implement system interfaces between PTS and the current and future SAP modules to increase the automation of manual billing and collection tasks.

Response: Agree with recommendation. Over the next year, DSD will work with OneSD to connect and display data between systems to help facilitate a more automated and centralized billing and collection system that reduces deficit accounts.

Recommendation for the Office of the City Treasurer

Recommendation 1: Assist the Development Services Department by providing a periodic report of payments received on referred accounts.

Response: Agree with recommendation. The Office of the City Treasurer Delinquent Accounts Program will provide DSD with a standard "Client Inventory" report that captures referred accounts with payment activity within a specific date range/period. This report can be produced on a monthly basis or upon request.

Recommendations for OneSD Project Management

Recommendation 1: Ensure DSD Fiscal Services (as well as DPMs and other project leads) are given access to data, screens and/or reports in SAP FiLo that clearly and accurately depict project balance, activity and length of time in deficit.

Response: Agree with recommendation. Access has already been granted to DSD staff via the formalized SAP Access Request process.

Recommendation 2: Ensure DPMs are given access to labor charge detail by job order number after implementation of SAP's Human Capital Management (HCM) module.

Response: Agree with recommendation. There are currently reports and screens that can be made available in SAP upon the HCM go-live that depict this data, including the Cost Center Report. However, the OneSD Project Management team is not able to provide user access to any transactions or data in SAP without the proper authorization. Any DSD staff who require this information and have not been mapped to an HCM display and reporting role within the context of the OneSD HCM project must complete the SAP Security Access Form, obtain their Appointing Authority's authorizing signature, and forward it to the OneSD Security Team where it will undergo a segregation of duties check and, depending upon the type of transaction or data, receive the Business Process Owner's approval.

Recommendation 3: Provide DSD with a sufficient number of operation accounts in SAP to ensure Deposit Account monthly statements contain enough detail regarding customer charges.

Response: Agree with recommendation. The mechanism that will be used to accomplish this in SAP is the Functional Area, as the term "operation account" is not used in SAP. OneSD will work with DSD to ensure the Functional Areas are established appropriately.

cc: Jay M. Goldstone, Chief Operating Officer
Wally Hill, Assistant Chief Operating Officer
Gail Granewich, City Treasurer
Debra Bond, OneSD Project Director
Kyle Elser, Audit Manager