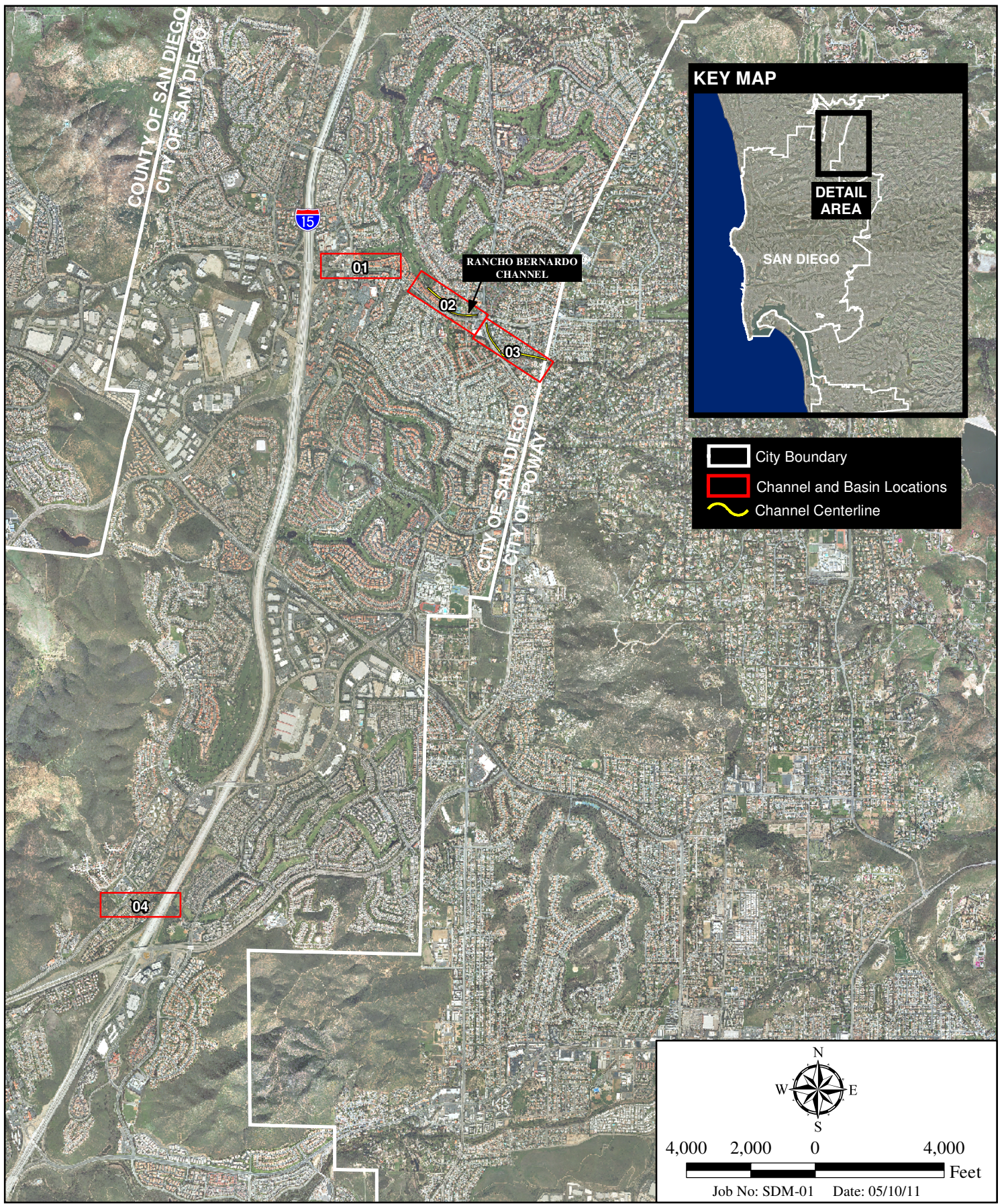


E:\ArcGIS\SDM-01 Storm Drain Maintenance\Map\ENV\VEIR\Fig3-1_HydrologicBasins.mxd -RK

Storm Water System Relationship to Hydrologic Basins

CITY OF SAN DIEGO MASTER STORMWATER SYSTEM MAINTENANCE PROGRAM

Figure 3-1



F:\ArcGIS\SSDM-01 StormDrainMaintenance\Map\ENV\EIR\Fig3-2a_RB.mxd -RK

Storm Water Facilities - Rancho Bernardo Area

CITY OF SAN DIEGO MASTER STORMWATER SYSTEM MAINTENANCE PROGRAM

Figure 3-2a

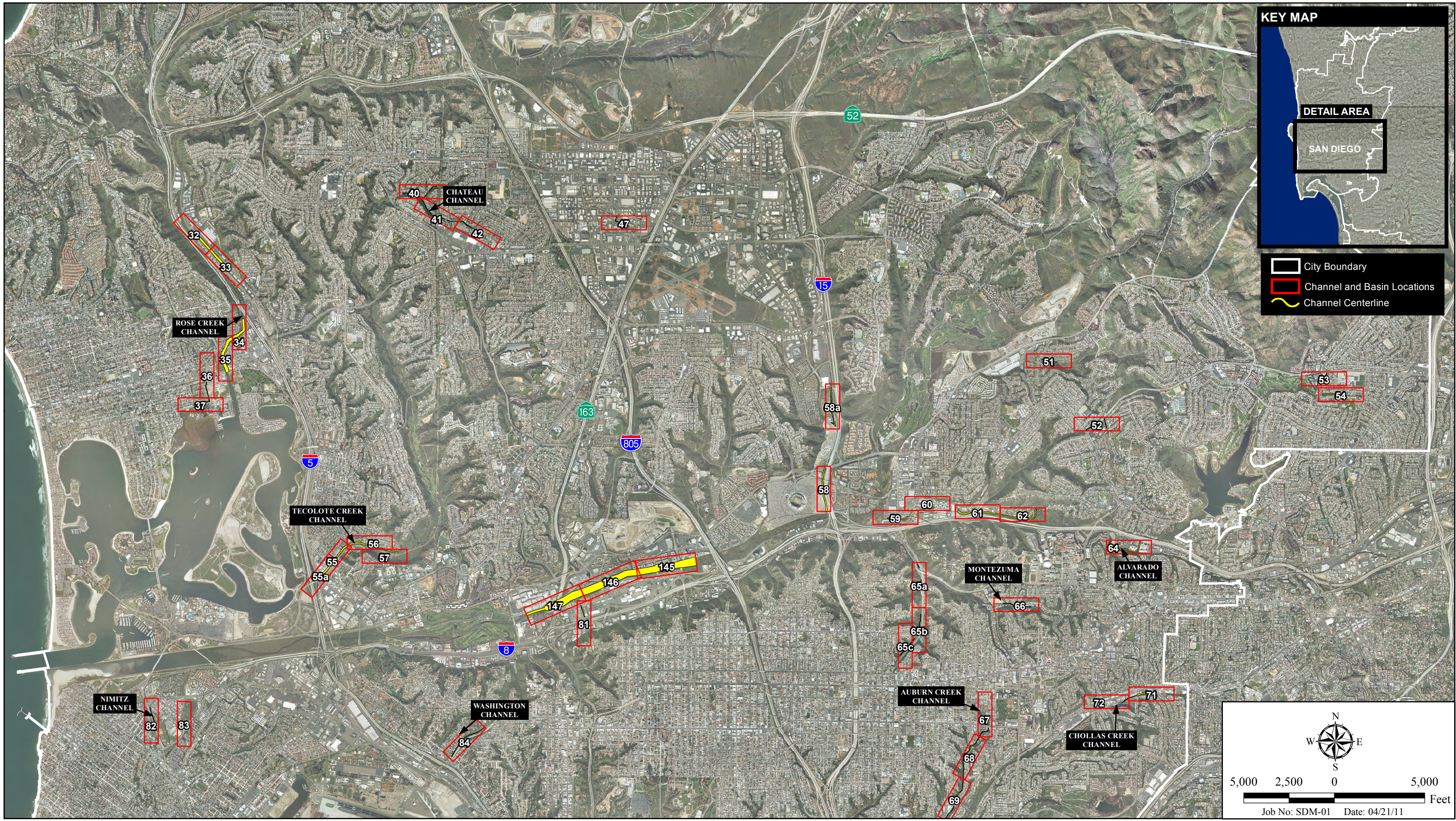


I:\ArcGIS\SDM-01 StormDrainMaintenance\Map\ENV\EIR\Fig3-2b_Soledad.mxd -RK

Storm Water Facilities - Soledad Area

CITY OF SAN DIEGO MASTER STORMWATER SYSTEM MAINTENANCE PROGRAM

Figure 3-2b

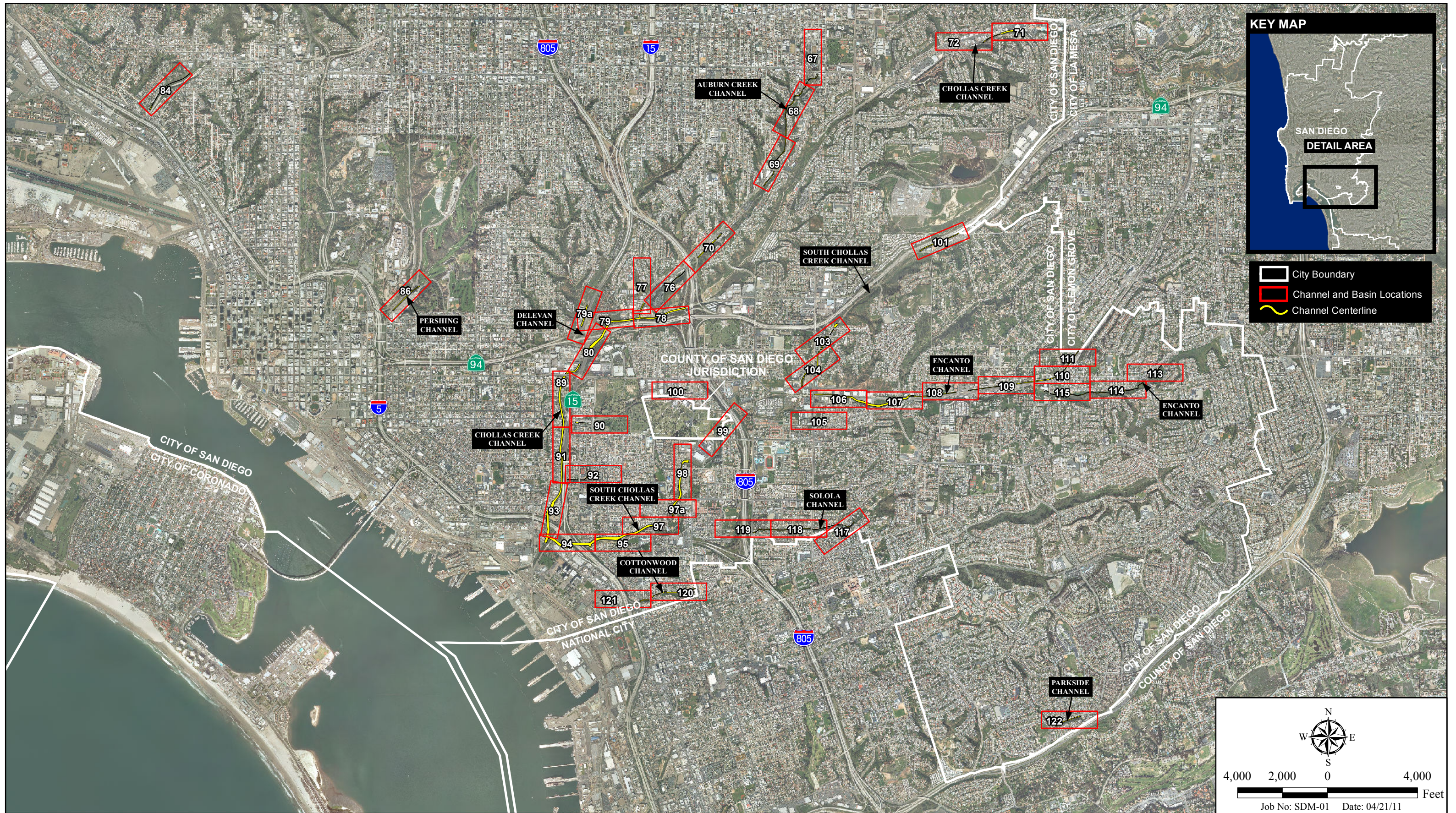


I:\ArcGIS\SDM-01 StormDrainMaintenance\Map\ENV\EIR\Fig3-2c_I8_Corridor.mxd -RK

Storm Water Facilities - I-8 Corridor

CITY OF SAN DIEGO MASTER STORMWATER SYSTEM MAINTENANCE PROGRAM

Figure 3-2c



I:\ArcGIS\SDM-01 StormDrainMaintenance\Map\ENV\EIR\Fig3-2d_CentralSD.mxd -RK

Storm Water Facilities - Central San Diego Area

CITY OF SAN DIEGO MASTER STORMWATER SYSTEM MAINTENANCE PROGRAM

Figure 3-2d



F:\ArcGIS\SDM-01 StormDrainMaintenance\Map\ENV\EIR\Fig3-2e_Otay.mxd -RK

Storm Water Facilities - Otay Mesa Area

CITY OF SAN DIEGO MASTER STORMWATER SYSTEM MAINTENANCE PROGRAM

Figure 3-2e