

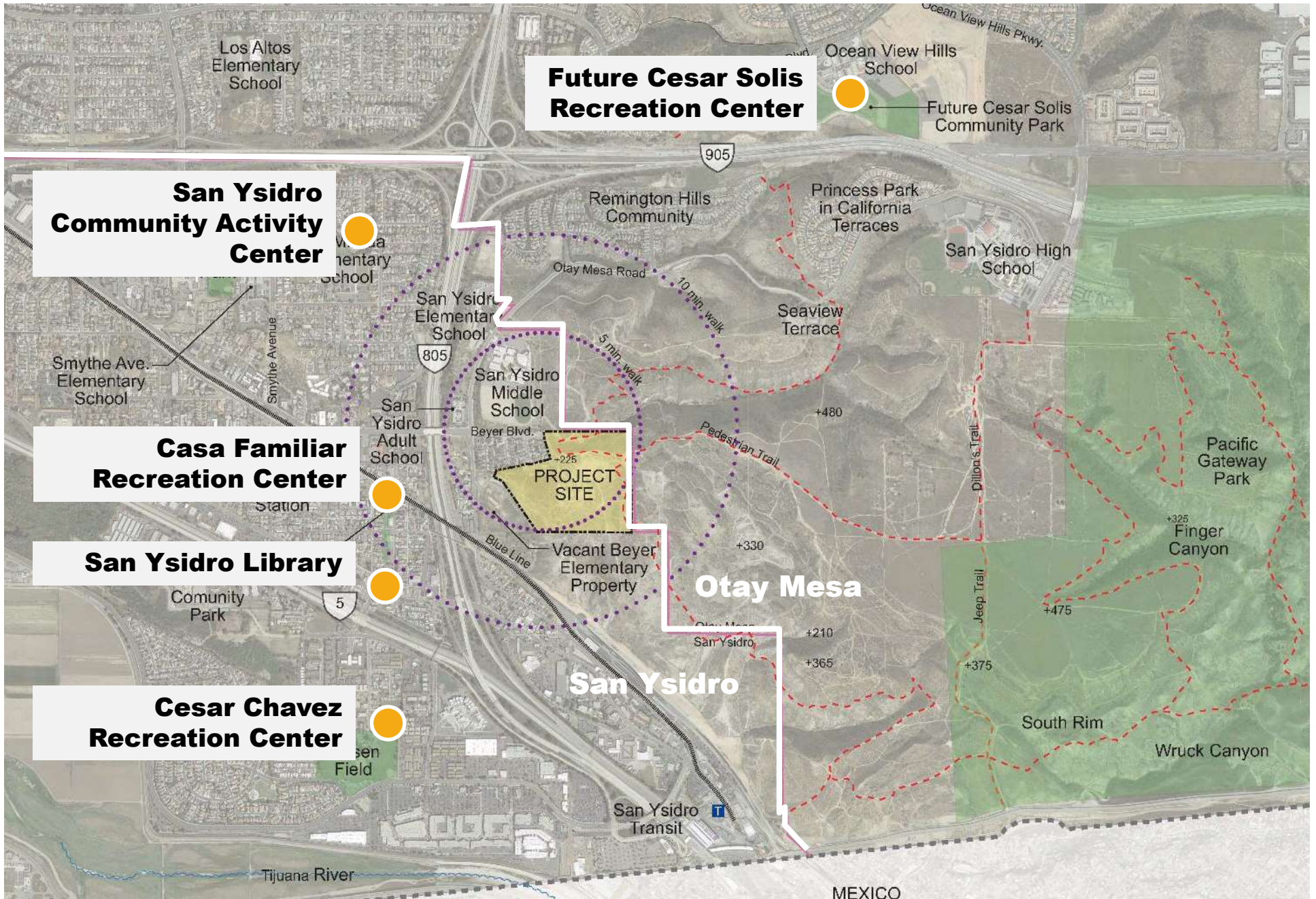


# Project Background


**BEYER PARK**



# PROJECT LOCATION



# SAN YSIDRO COMMUNITY PLAN

Parks And Recreation Facilities	Existing Usable Acreage	Proposed Usable Acreage	Parks And Recreation Facilities Descriptions	Parks And Recreation Facilities Recommendations
<b>Neighborhood Parks</b>				
Beyer Park	0.0	5.0	Proposed neighborhood park on undeveloped City Park and Recreation Department property. This site has approximately 12.5 usable acres, which will be shared with Otay Mesa (5.0 acres San Ysidro and 7.5 acres Otay Mesa).	Complete the General Development Plan (GDP). Design and construct amenities such as: lighted multipurpose turf sports fields, a skate park, a lighted basketball court, children’s play areas, comfort station/concession building, picnic facilities (including picnic shelter, parking areas, viewpoints/overlooks and interpretive signage), bicycle lanes and bike racks, walkways, security lighting, landscaping, trailheads and trails to connect to the Otay Mesa
Coral Gate Neighborhood Park	2.89	0.0		
Howard Lane Neighborhood Park	6.8	0.0		

- Lighted multi-purpose turf sports fields
- Skate park
- Lighted basketball
- Children’s play
- Comfort station/concession
- Picnic facilities
- Bicycle lanes and bike racks
- Walkways
- Security lighting
- Landscaping
- Trailheads and trails

# OTAY MESA COMMUNITY PLAN

Name	Location	Size (useable acres)	Description	Expected Completion Date
Ocean View Hills Neighborhood Park	Ocean View Hills Parkway	5.1	This neighborhood park provides children's play areas, picnic facilities, parking, passive lawn areas and landscaping.	Completed
Ocean View Hills Joint-Use Area	Ocean View Hills K-8 School	5.0	This 5.0 acre joint-use area is adjacent to Ocean View Hills K-8 School located on Del Sol Boulevard. The 25-year joint-use agreement with the San Ysidro School District commenced in 2005 and expires in 2030. Turfed fields have been installed, and future improvements may include a baseball backstop, a skinned infield, and sports field lighting.	Completed
Vista Pacifica Neighborhood Park	Avenida De Las Vistas	6	This neighborhood park provides children's play areas, picnic facilities, parking, passive lawn areas and landscaping.	Completed
Beyer Community Park	Southwest District	7.5	This community park may include a comfort station with a concession and storage area, basketball courts, multi-use turf fields with sports lighting, picnic areas, parking and children play areas.	Dates to be provided by Facilities
Hidden Trails Neighborhood Park	Northwest District	3.7	This park will provide play areas, parking, picnic	ing
Denney Ranch Neighborhood Park	Northwest District	11.1		
Pacific Breezes Community Park	Northwest District	13.5		be by
Riviera Del Sol Neighborhood Park	Northwest District	4.9		g

- Comfort station with concession and storage area
- Basketball courts
- Multi-use turf fields with sports lighting
- Picnic areas
- Parking
- Children's play



# **PROJECT BACKGROUND**

## CITY GDP PROCESS

- **San Ysidro/Otay Mesa Recreation Council**
  - **Informational Meeting Feb 2017**
  - **Park Alternatives September 2017**
  - **Draft GDP - Feb 12, 2018**
  - **Approved Draft GDP - April 9, 2018**
- **Park and Recreation Board Approval**
  - **Final GDP - September 20, 2020**



# PROJECT BACKGROUND

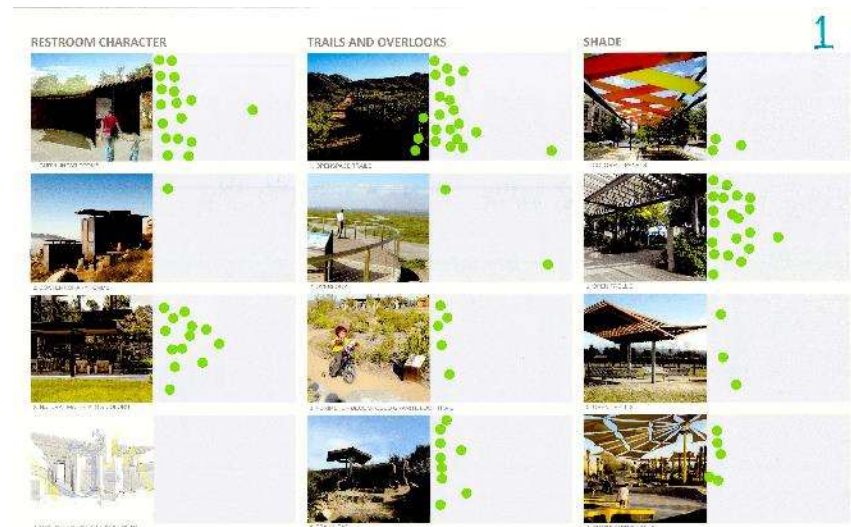
## COMMUNITY FEEDBACK

### Community Feedback

- Concerns were identified and taken into consideration in the park design: Maximize parking. Consider security, vehicular access, and current condition of the site (trash and homeless were noted as concerns).
- Preferred Park Amenities were identified by the community.
- Additional feedback indicated the priority is to focus on children. There is a need for both a large active-use sports field area (specifically multiple soccer fields), and passive park space that maximizes the useable area and provides connections to nature.



Community Meeting Feb 2018



Example of Community Input on Preferred Park Amenities

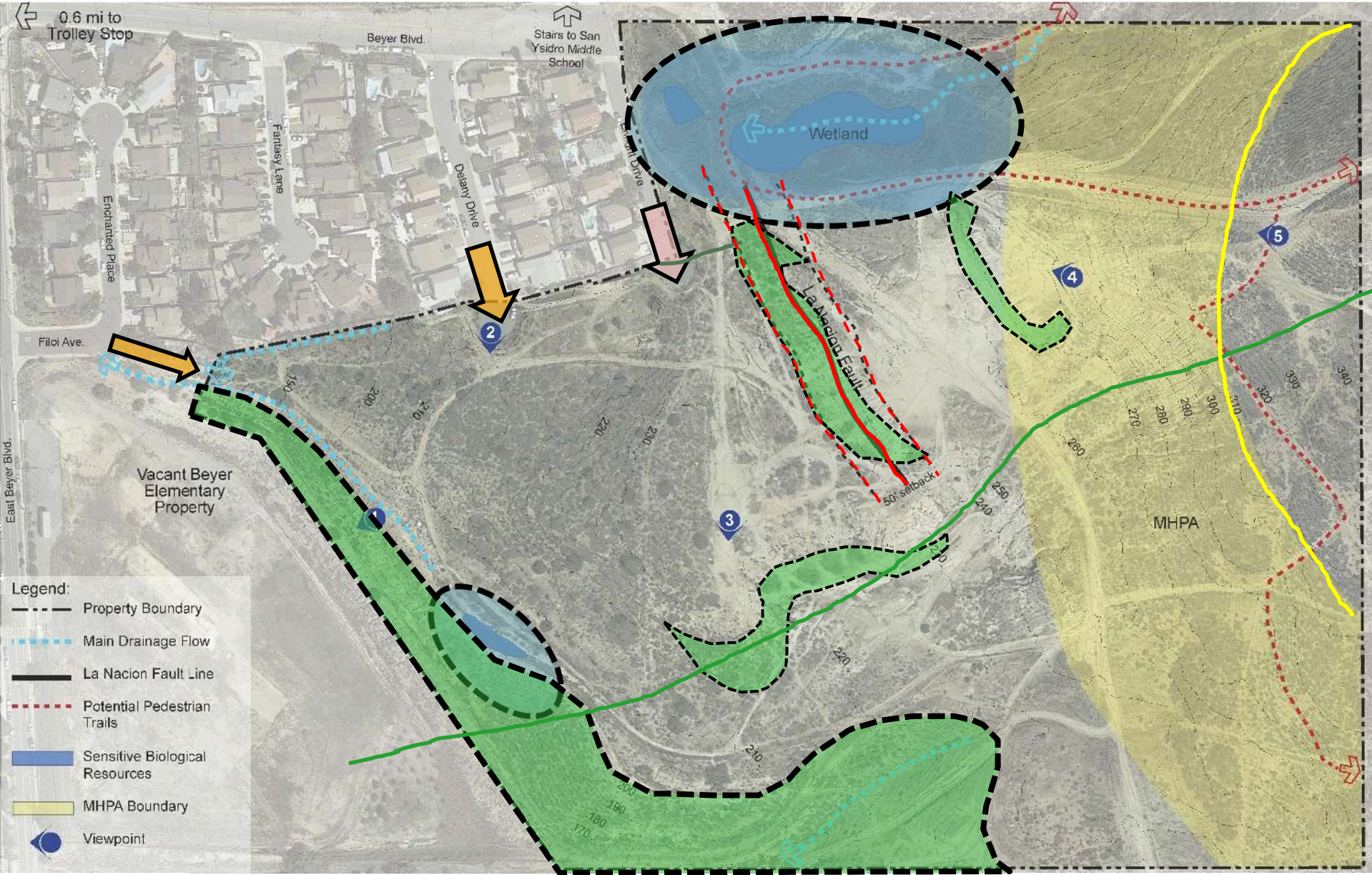


## **SITE CONSTRAINTS ANALYSIS**

- **Biological resources on the North, South, East and West**
- **MHPA to the East**
- **Topography – Site rises from 170 to 355 AMSL**
- **Steep slopes on East, West, and South**
- **Moody Canyon on North**
- **Geology – Fault line and San Ysidro landslide**
- **Privately – owned land on South and West**



# SITE CONSTRAINTS







# General Development Plan

**BEYER PARK**

The City of  
**SAN DIEGO**



SCHMIDT DESIGN GROUP, INC.

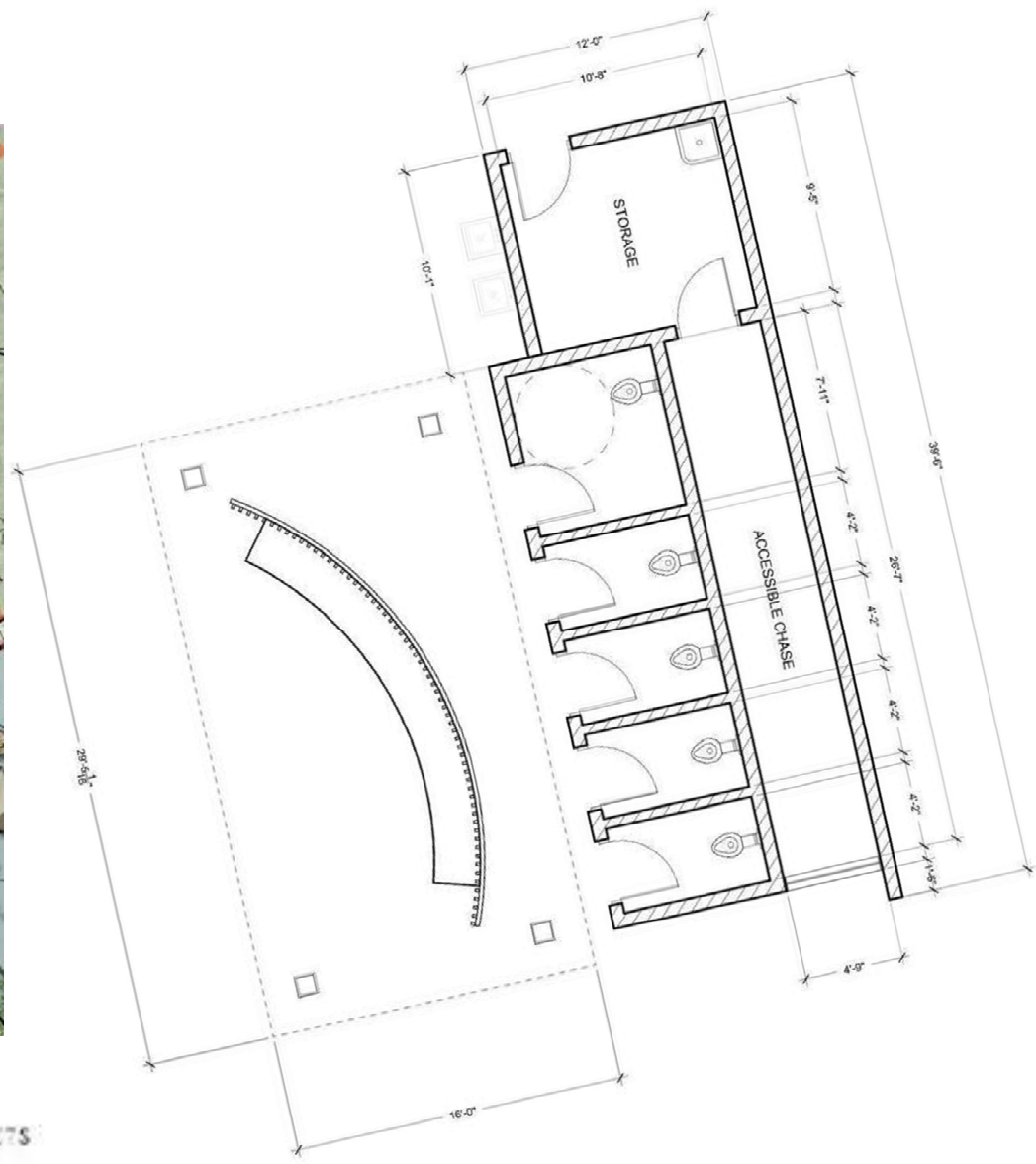
# PARK AMENITIES

## GENERAL DEVELOPMENT PLAN



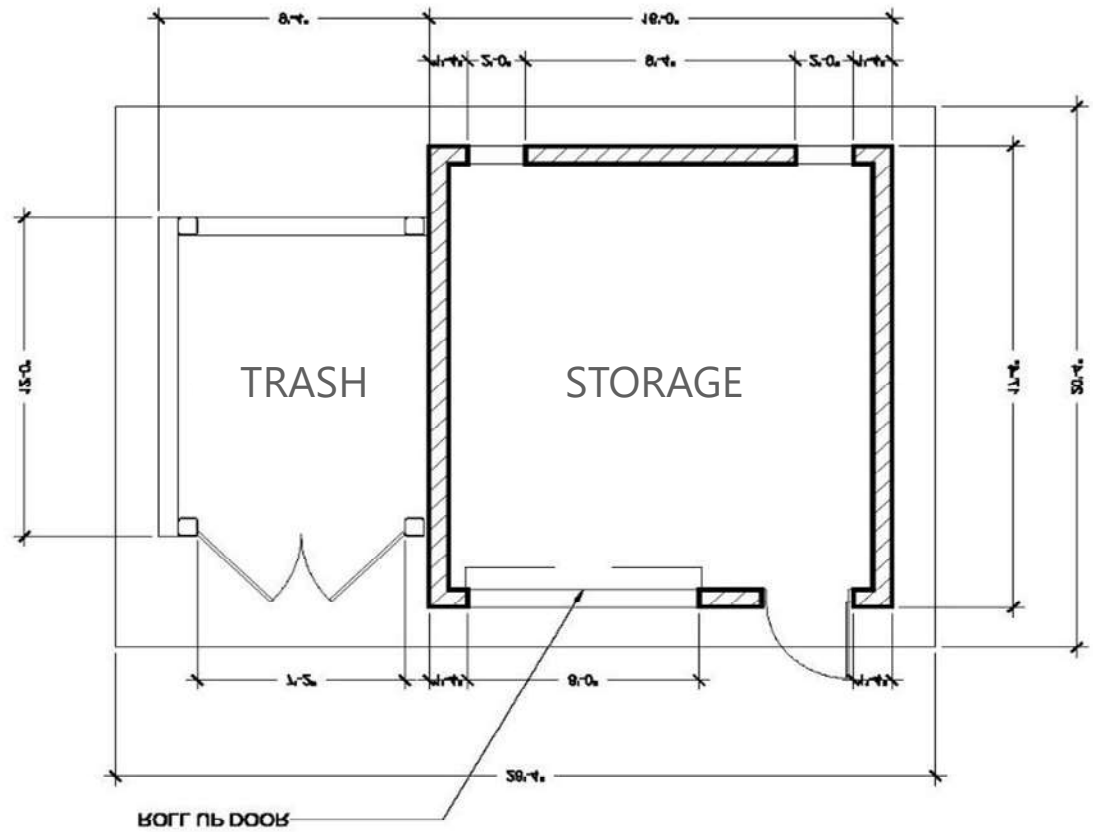
# PARK AMENITIES

## COMFORT STATION



# PARK AMENITIES

## STORAGE BUILDING



# PARK AMENITIES

## COMFORT STATION



FRONT ELEVATION



SIDE ELEVATION



REAR ELEVATION



SIDE ELEVATION



# PARK AMENITIES

## STORAGE BUILDING



FRONT ELEVATION



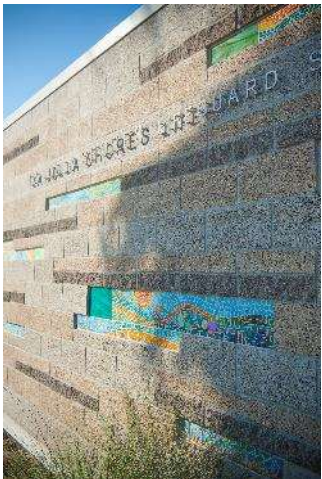
SIDE ELEVATION



SIDE ELEVATION

# PARK PRECEDENT

## MATERIALS & PICNIC STRUCTURES



# PARK AMENITIES

## PICNIC STRUCTURES





# PARK PRECEDENT

PICNIC STRUCTURES



# PARK AMENITIES

MULTI-USE TURF FIELD WITH SPORTS LIGHTING



# PARK PRECEDENT

MULTI-USE TURF FIELD WITH SPORTS LIGHTING



Soccer fields – 3 youth fields and 1 adult field overlay



Sports lighting



# PARK AMENITIES

## SKATE PARK

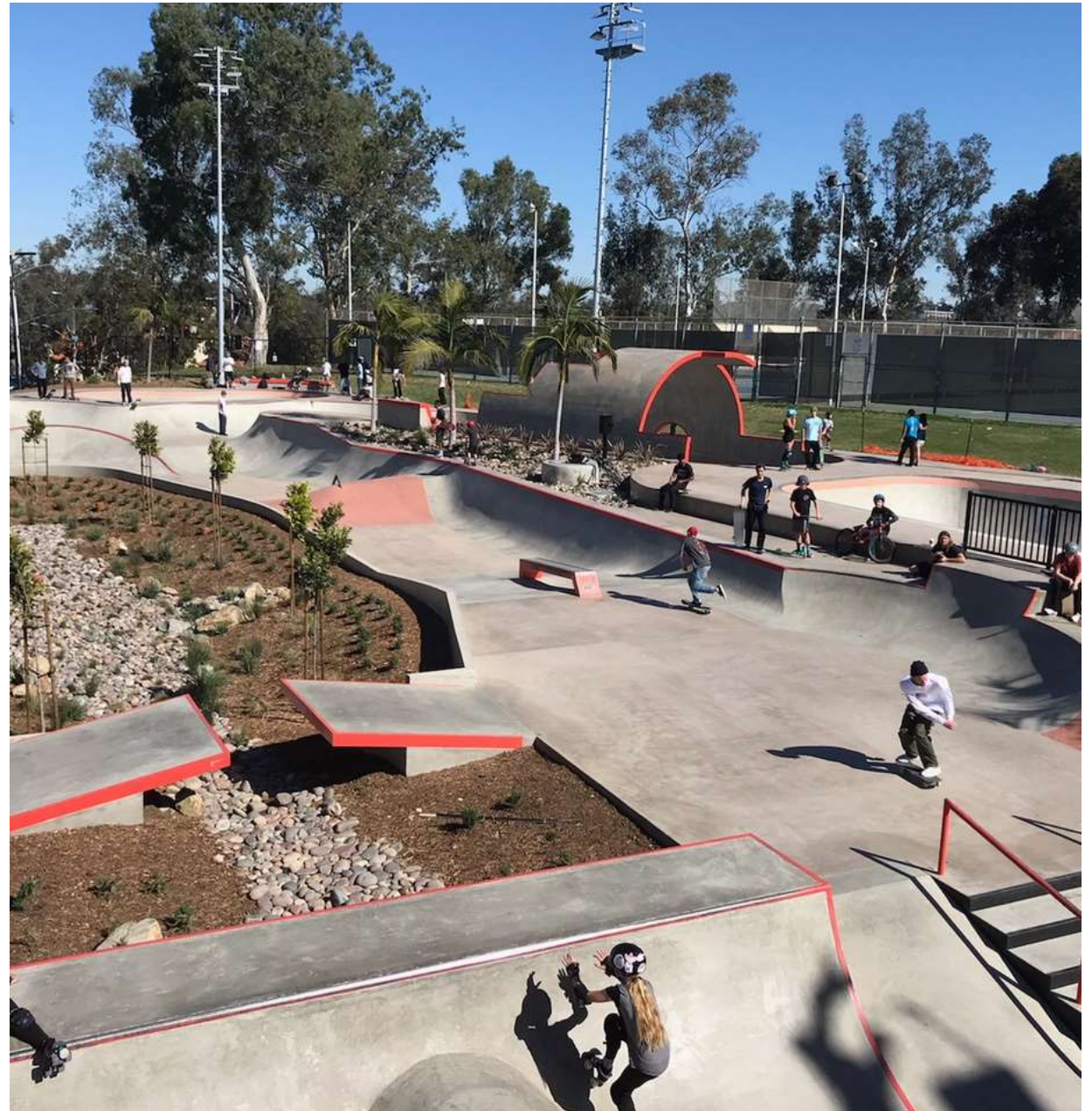


# PARK PRECEDENT

## SKATE PARK



Skate Park



# PARK AMENITIES

SPORTS COURTS and EXERCISE STATION



# PARK PRECEDENT

## SPORTS COURTS



Half court basketball



# PARK PRECEDENT

## FITNESS NODES





# PARK AMENITIES

## CHILDREN'S PLAY



# PARK PRECEDENT

CHILDREN'S PLAY



# PARK PRECEDENT

CHILDREN'S PLAY



# PARK PRECEDENT

CHILDREN'S PLAY



Play arches



Play surfacing - sand



Play surfacing - resilient



# PARK PRECEDENT

PLAY ON SLOPE



# PARK PRECEDENT

PLAY ON SLOPE



# PARK PRECEDENT

NATURAL SEATING AREA



# PARK AMENITIES

AMPHITHEATER / GATHERING SPACE / GEOLOGY PLAZA





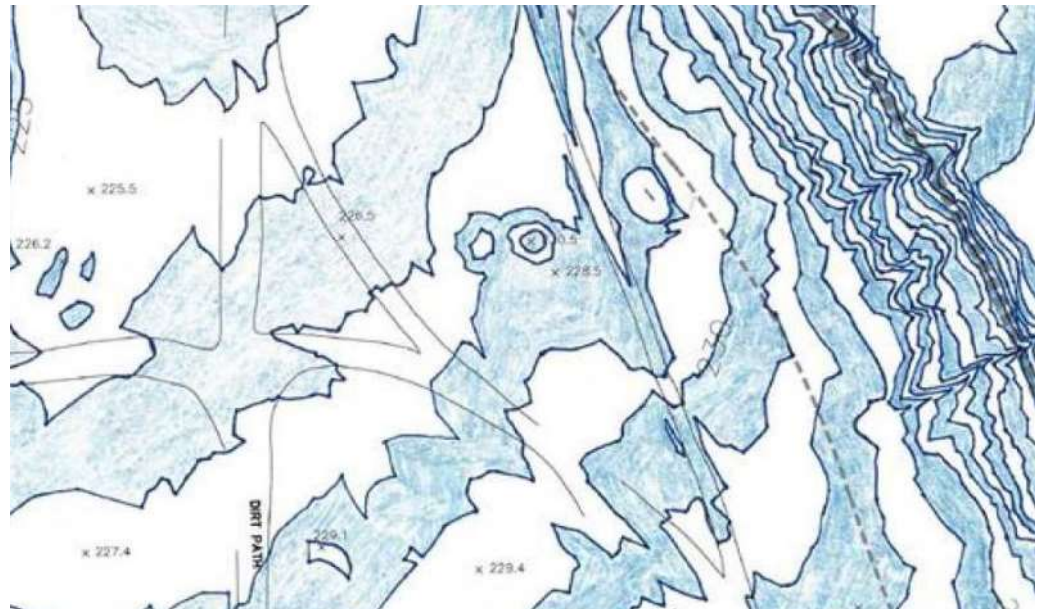
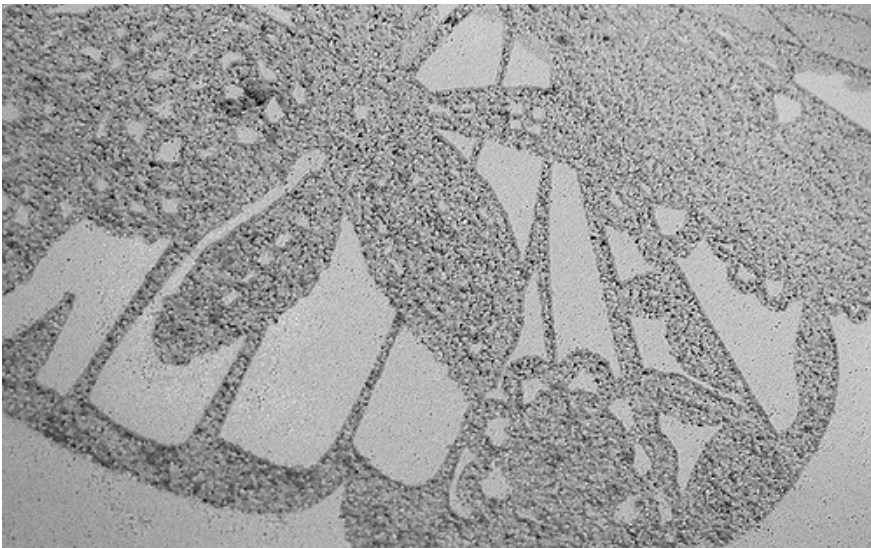
# PARK PRECEDENT

AMPHITHEATER / GATHERING SPACE



# DRAFT GENERAL DEVELOPMENT PLAN

## GEOLOGY PLAZA



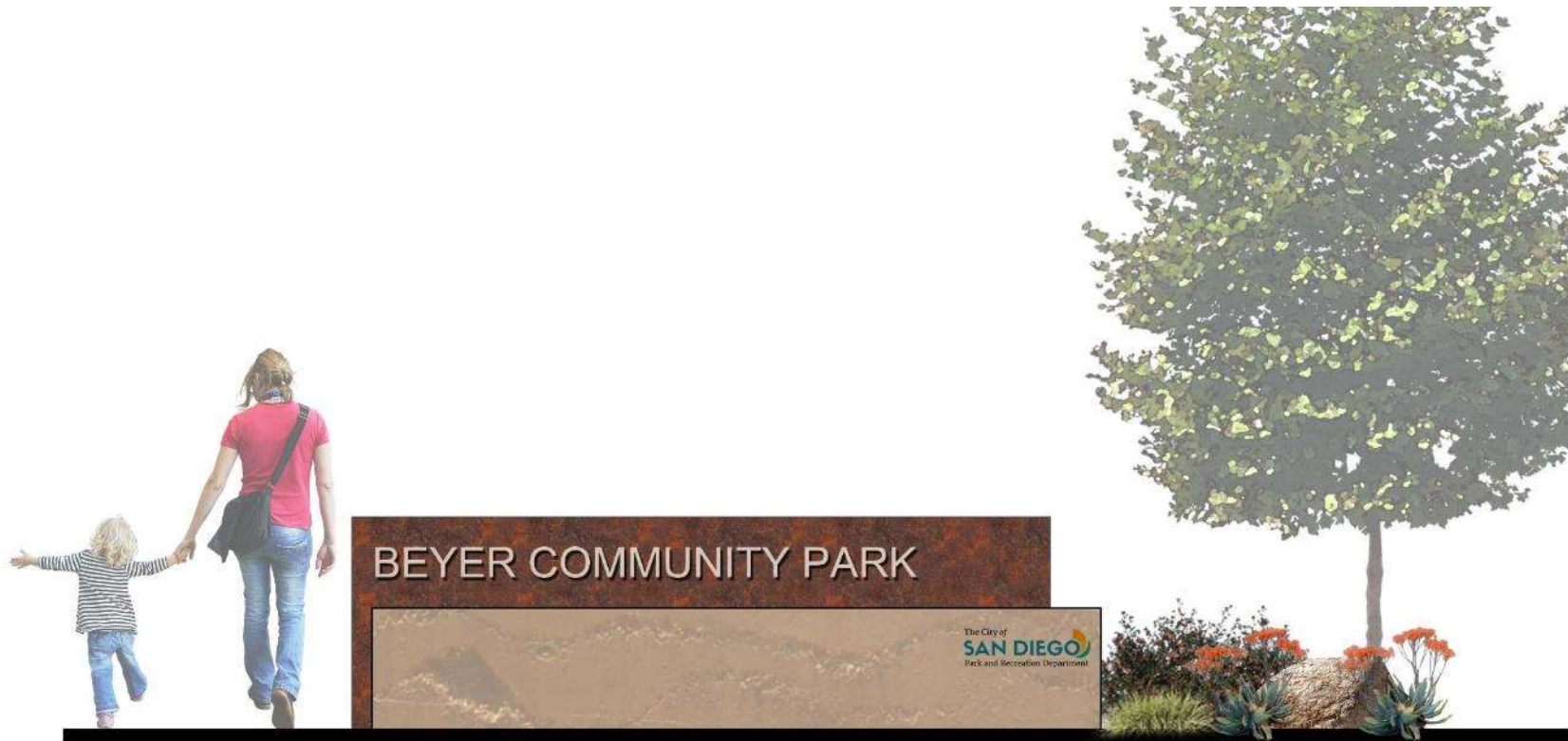
# PARK AMENITIES

## ENTRY MONUMENT SIGNAGE



# DRAFT GENERAL DEVELOPMENT PLAN

ENTRY MONUMENT SIGNAGE



# PARK AMENITIES

## DOG PARK



# PARK PRECEDENT

## DOG PARK



Dog Park



Haws pet fountain



Pet station



# PARK AMENITIES

## LOOP TRAIL AND TRAIL CONNECTIONS



# PARK PRECEDENT

PERIMETER TRAIL





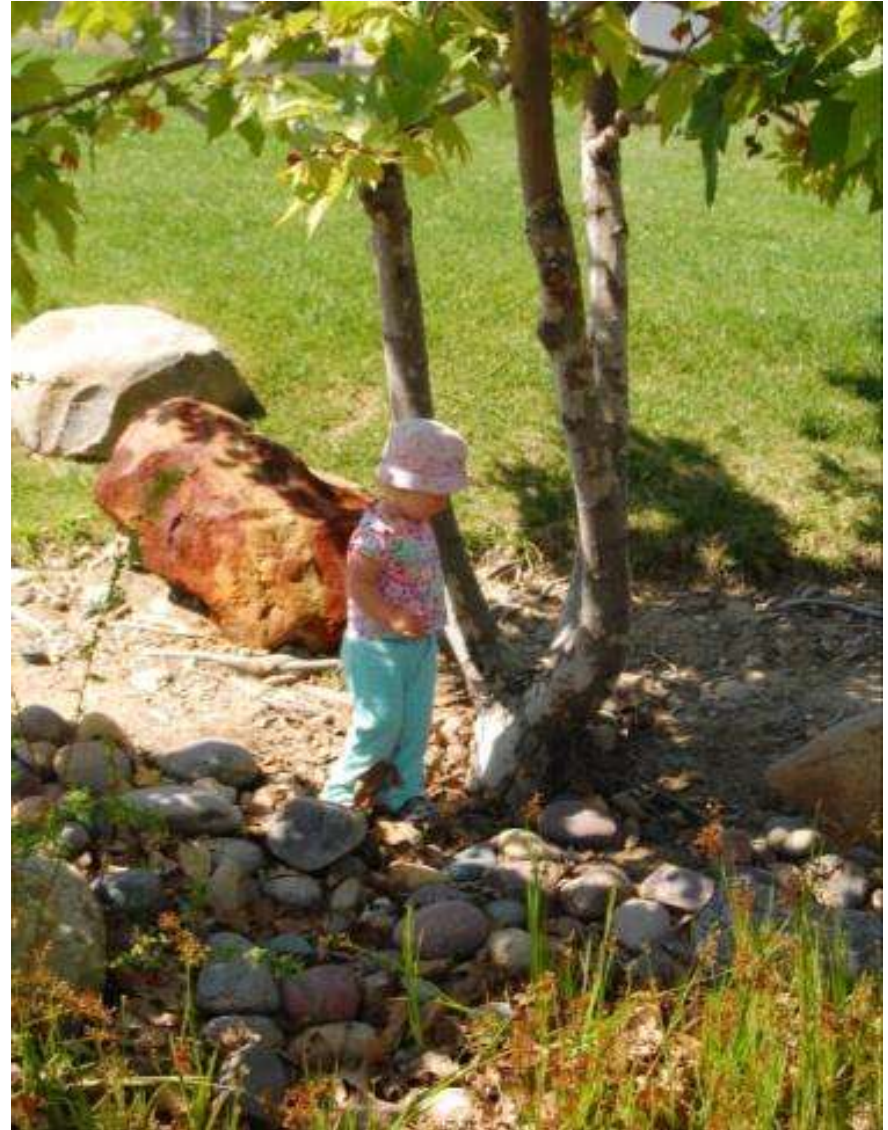
# PARK PRECEDENT

TRAILS



# PARK PRECEDENT

## STORMWATER INTEGRATION



**PARK PRECEDENT**  
SITE FURNITURE



White concrete picnic tables



# PARK PRECEDENT

SITE FURNITURE



Concrete Trash and Recycle Receptacles with Hood



Custom concrete seating nodes





**THANK  
YOU**

**BEYER PARK**

The City of  
**SAN DIEGO**



SCHMIDT DESIGN GROUP, INC.

# PARK AMENITIES

## GENERAL DEVELOPMENT PLAN



# COMMUNITY PARKING FEEDBACK

FEBRUARY 12, 2018

- Alternatives to provide additional parking on site have been analyzed and the proposed design will exceed the parking standards for the park
- Per the Park Design Standards 66 spaces are required
- The new design includes a total of 85 parking spaces including 15 along Enright Drive
- The east side of Enright Drive will be improved with a curb and sidewalk and enhanced landscaping and fencing
- A second entrance is included off Delaney Drive to reduce traffic on Enright Drive
- Traffic analysis indicates that the traffic generation in the area is primarily M-F. The park traffic is anticipated to be highest on the weekends.



# PARK AMENITIES

## GENERAL DEVELOPMENT PLAN

### Parking

**Total Spaces Required** 66

Soccer Field (2 ac) —30

Parkland (6.5 ac) —33

**Total Spaces Provided** 85

Standard Stalls —66

Accessible Stalls —4

Street Parking —15

