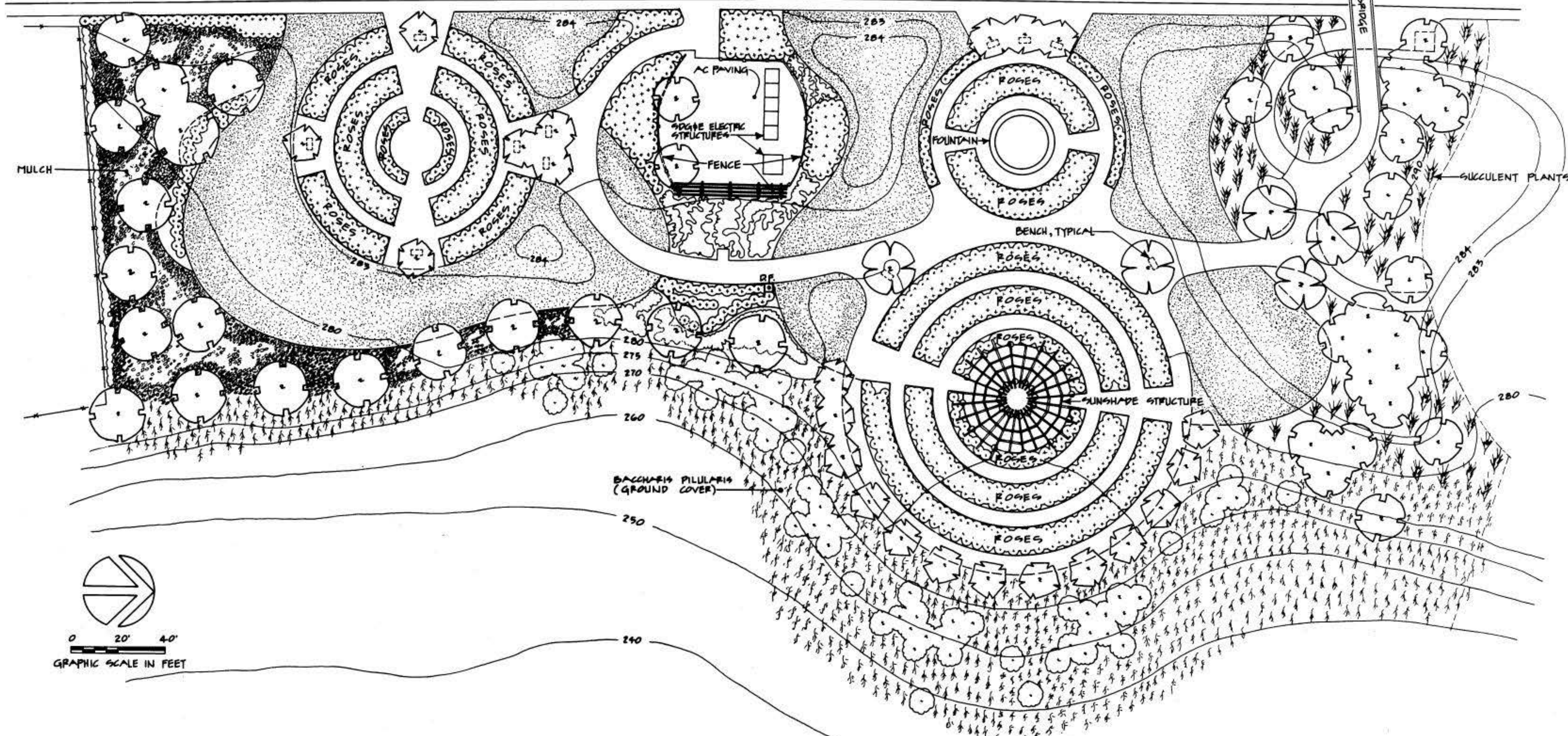


PARK

BLVD.

PEDESTRIAN BRIDGE



COUNCIL DIST. B COMM. PLAN AREA BALBOA PARK No. 1 P.S.D.

DATA LOG FOR:

DATE	ACTION	REFERENCE DOCUMENTS
5-26-1866	SITE ACQUIRED	RESO. NO. COST \$ ACRES: 3.25
2-4-1870	SITE DEDICATED	ORD. NO. ACRES: 3.25
11-18-1914	GDP CONSULTANT Hired	RESO. NO. NAME: GERALD L. GARNER A.S.L.A.
	P.A.R. BOARD APPROVAL	P.F. & R. APPROVAL DATE
11-18-1975	INITIAL DEVELOPMENT	CIP NO. JO. NO. 117169 DRWG. NO. 16010-D
11-18-1980	EROSION CONTROL	CIP NO. JO. NO. 117054 DRWG. NO. 19073-D
		CIP NO. JO. NO. DRWG. NO.
		CIP NO. JO. NO. DRWG. NO.
		CIP NO. JO. NO. DRWG. NO.

IMPROVEMENTS SUMMARY (DATA FROM AS-BUILT DRAWINGS)

ITEM	QUANTITY	ITEM	QUANTITY	ITEM	QUANTITY	ITEM	QUANTITY
TOTAL SITE	3.25 AC	PLAY AREA	SF	PAVED WALKS	27,840 SF	SECURITY LTS	STDS
IMPROVED AREA	3.25 AC	MULTI PURPOSE CT	SF	PARK ROADS	SF	BALL FIELD LTS	STDS
TURF	.62 AC	TENNIS CTS	SF	PARKING LOT	SF	TENNIS CT. LTS	STDS
SHRUB BED	.10 AC	RESTROOM	SF	" " STALLS STD.		MULTI PURPOSE CT.	STDS
NATURAL	AC	REC. BLDG.	SF	" " STALLS HDCP			
OTHER LANDSCAPING	AC	POOL BLDG.	SF	COURT GAME AREA	SF	BACKSTOPS	EA
DIRT INFIELDS	AC	" " DECK	SF	AC PAVING AREA	3,200 SF	TENNIS CTS.	EA
GROUND COVER	.85 AC	" " WATER	SF	LAWN EDGING	2,070 LF		
MULCH	.25 AC	FOUNTAIN	616 SF				
ROSE BEDS	.44 AC						
SUCCULENT PLANTS	.26 AC						
						REVISION	

CITY OF SAN DIEGO PARK and RECREATION DEPARTMENT

THE GENERAL DEVELOPMENT PLAN
ROSE GARDEN

BALBOA PARK

LAMBERT COORDINATES 206-1725 THOMAS BROS. PG. 60-D5