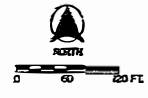
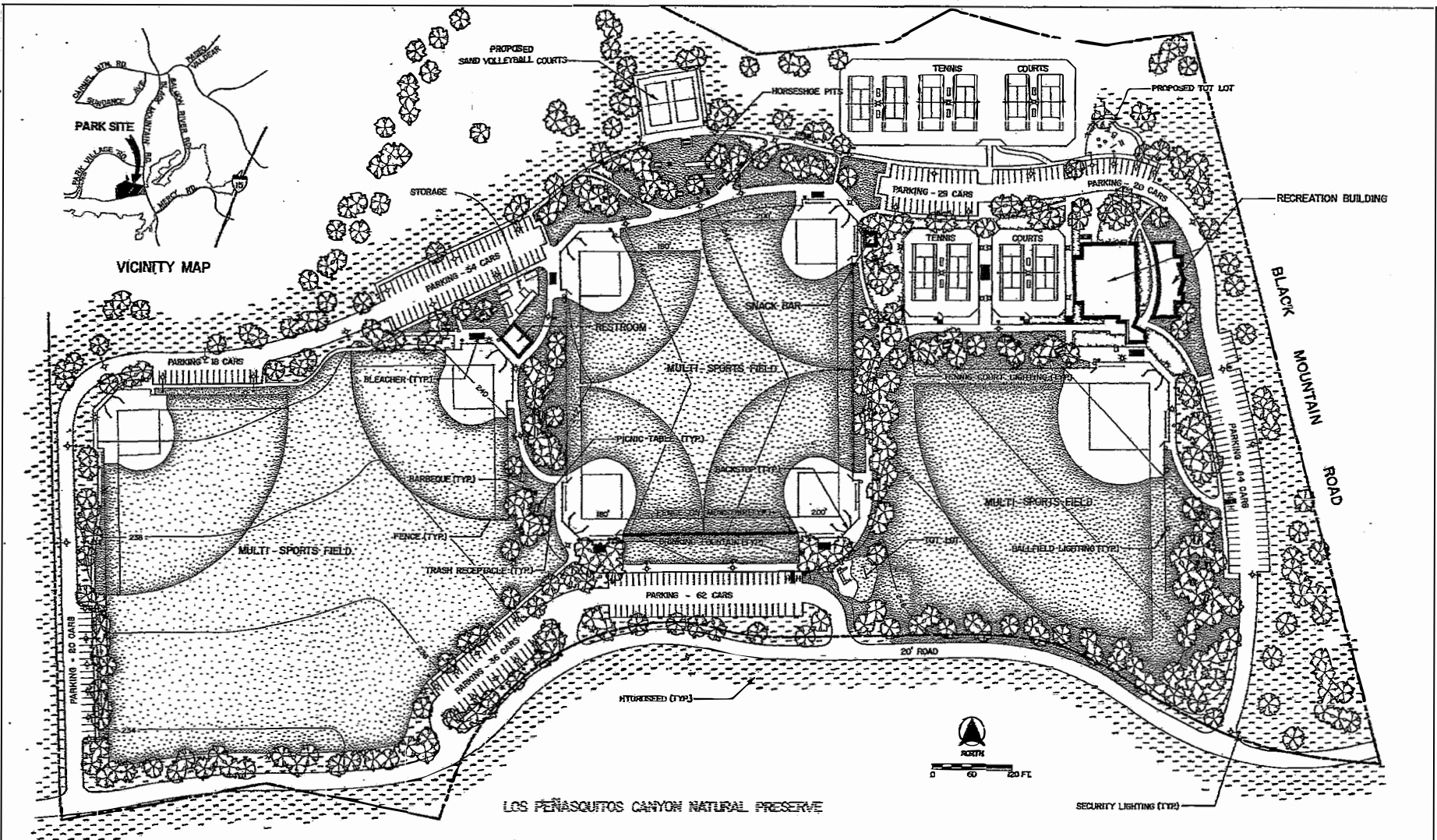


VICINITY MAP



DATE	ACTION	REFERENCE DOCUMENTS	ACRES
2-7-81	SITE ACQUIRED	RESO. NO. 253609	42.89
4-11-83	SITE DESIGNATED	ORD. NO. 15928	42.89
1982	POP. CONCENTRATION INDEX	REF. NO. R-253641	
P.E.S. REVIEW APPROVAL			
4-3-86	GENERAL DEVELOPMENT	CDP NO. 29-410	
	TENNIS COURTS	CDP NO. 29-6350	
	PHASE II	CDP NO. 29-7540	
11-13-82	ENTRANCE	CDP NO. 29-7540	
3-25-86	PHASE III	CDP NO. 29-7540	
	TOT LOT	CDP NO. 29-7540	

IMPROVEMENTS SUMMARY (DATA FROM AS-BUILT DRAWINGS)			
ITEM	QUANTITY	ITEM	QUANTITY
TOTAL SIZE	42.89 AC	PLAY AREA	5,456 SF
IMPROVED AREA	AC	MULTI PURPOSE CT	22,600 SF
TOTV	14.06 AC	TENNIS CT	33,758 SF
GRASSY AREA	0.82 AC	RESTROOM	1,200 SF
NATURAL	9.41 AC	REC. BLDG.	15,560 SF
OTHER LANDSCAPING	9.67 AC	POOL BLDG.	SF
DIST. WETLANDS	1.96 AC	" " DECK	SF
		" " WATER	SF
		LAUNDRY CHANG.	8,744 SF
		SECURITY LIT.	60 STKS
		BALL FIELD LIT.	21 STKS
		STANDS CH. LIT.	10 STKS
		MULTI PURPOSE CT.	STKS
		BACKTOPS	7 EA
		TENNIS CT.	4 EA
REVISION	S.M. 11/27/84		

CITY OF SAN DIEGO PARK AND RECREATION DEPARTMENT

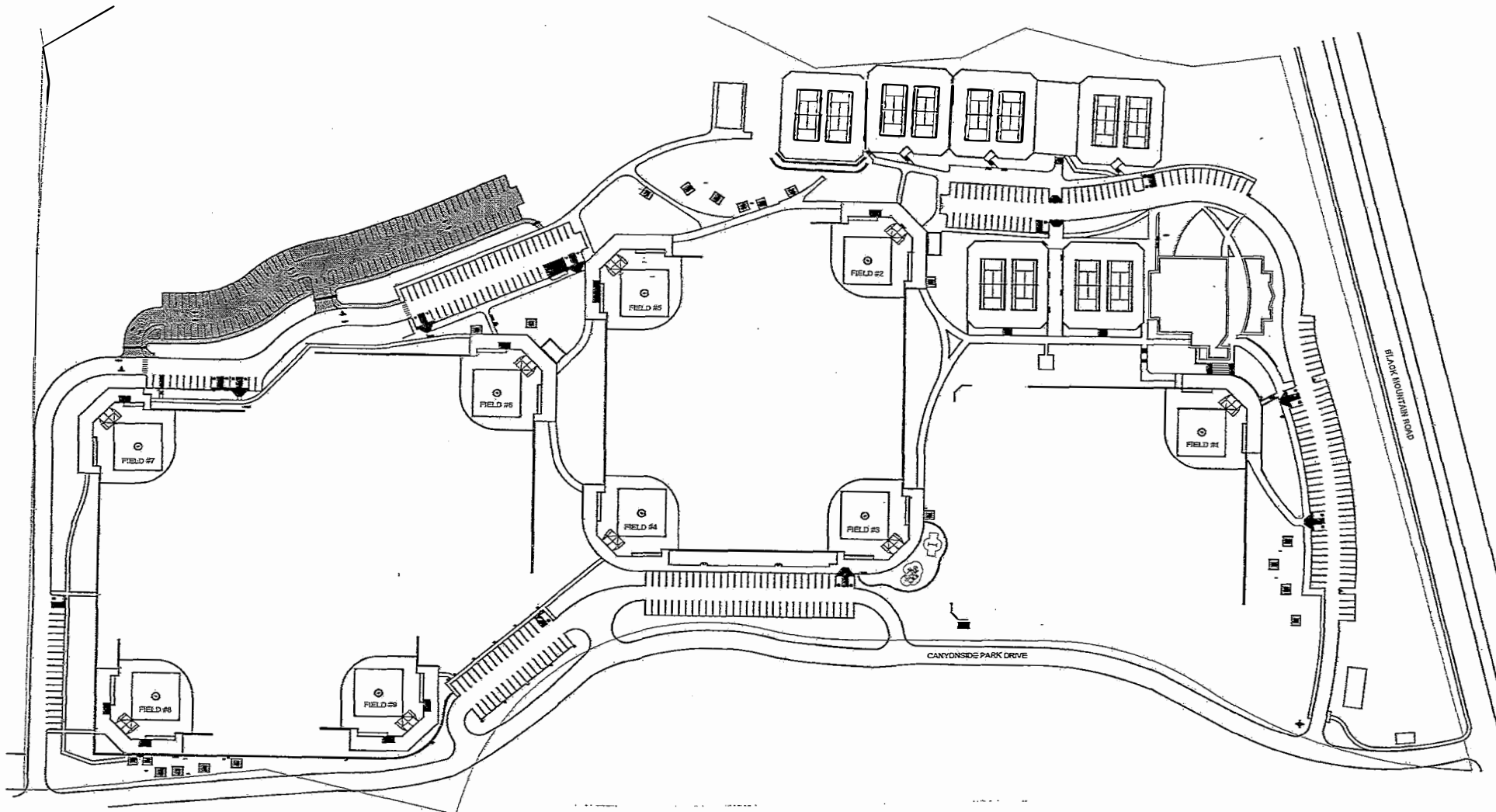
THE GENERAL DEVELOPMENT PLAN

CANYONSIDE

COMMUNITY PARK

COUNCIL DIST. NO. 1 COMM. PLAN AREA PEÑASQUITOS EAST - 35 12350 BLACK MOUNTAIN RD. P.S.D. NO. 130

LAMBERT COORDINATES 282-1729 THOMAS BROS. PG. 1189, DE 8, DT



Canyonside Community Park

General Development Plan - Amendment