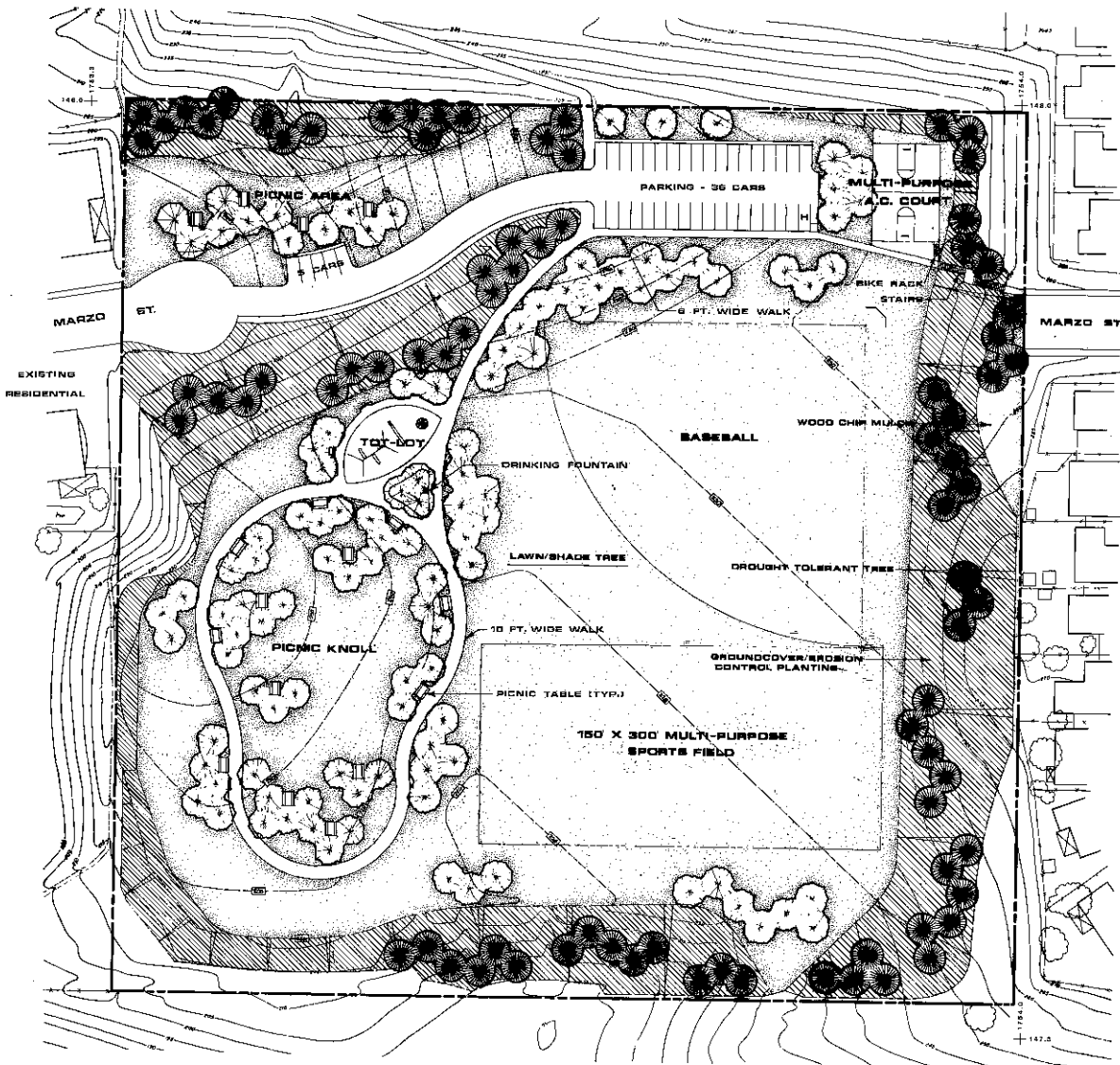
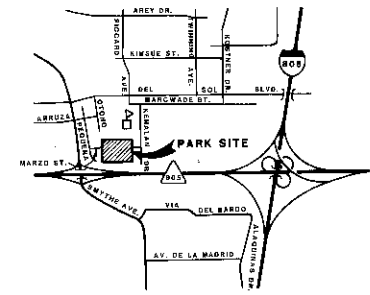


LOS ALTOS ELEMENTARY SCHOOL



J-906 R.D.W.



Vicinity Map

EXISTING RESIDENTIAL



DATA LOG FOR:

DATE	ACTION	REFERENCE DOCUMENTS	COST	ACRES
4-28-78	SITE ACQUIRED	RESO. NO. 220802		10.29
12-17-78	SITE DEDICATED	ORD. NO. 15142		10.29
9-8-87	GDP CONSULTANT HIRED	RESO. NO. 286185		
	P&R BOARD APPROVAL	P&R APPROVAL		
	CIP NO.	JO NO.		DRWG. NO.
	CIP NO.	JO NO.		DRWG. NO.
	CIP NO.	JO NO.		DRWG. NO.
	CIP NO.	JO NO.		DRWG. NO.
	CIP NO.	JO NO.		DRWG. NO.
	CIP NO.	JO NO.		DRWG. NO.

IMPROVEMENTS SUMMARY (DATA FROM AS-BUILT DRAWINGS)

ITEM	QUANTITY	ITEM	QUANTITY	ITEM	QUANTITY	ITEM	QUANTITY
TOTAL SITE	AC	PLAY AREA	SF	PAVED WALKS	SF	SECURITY LTS	STDS
IMPROVED AREA	AC	MULTI PURPOSE CT	SF	PARK ROADS	SF	BALL FIELD LTS	STDS
TURF	AC	TENNIS CTS	SF	PARKING LOT	SF	TENNIS CT LTS	STDS
SNIPUB BED	AC	RESTROOM	SF	" STALLS STD		MULTI PURPOSE CT	STDS
NATURAL	AC	REC. BLDG.	SF	" STALLS HOCP			
OTHER LANDSCAPING	AC	POOL BLDG.	SF	COURT GAME AREA	SF	BACKSTOPS	EA
DIRT INFIELDS	AC	" DECK	SF	"		TENNIS CTS	EA
		" WATER	SF	LAWN EDGING	LF		
						REVISION	

CITY OF SAN DIEGO PARK and RECREATION DEPARTMENT

THE GENERAL DEVELOPMENT PLAN  
**LOS ALTOS PARK**