

LEGEND

| | | |
|--|---|------------|
| | PEDESTRIAN CONCRETE PAVING #1 | (1/15-1) |
| | PEDESTRIAN CONCRETE PAVING #2 | (1/15-1) |
| | PEDESTRIAN CONCRETE PAVING #3 | (1/15-1) |
| | CONCRETE STAGE, RAMP & STEPS | (1/15-2) |
| | DONOR PAVERS SET IN CONCRETE, COLOR #1 | (1&5/15-1) |
| | DONOR PAVERS SET IN CONCRETE, COLOR #2 | (1&5/15-1) |
| | FIRE ACCESS CONCRETE PAVING | (3/14-1) |
| | TRASH RECEPTACLE | (5/15-4) |
| | PRECAST CONCRETE TABLES & BENCHES | (1/15-4) |
| | CITY STNDRD BIKE RACK | (5/15-4) |
| | DRINKING FOUNTAIN WITH ROCK SUMP (PER SDRSD SDM-107) | (5/15-4) |
| | 1.5' to 2.5' DIAMETER RIVER RUN WASHED GRANITE BOULDERS | (4/15-4) |
| | 6'X6' CAST IRON TREE GRATE, PER SDRSD L-4, "TREE GRATES" | (6/15-4) |
| | 6' DIAM. CAST IRON TREE GRATE, PER SDRSD L-4, "TREE GRATES" | (6/15-4) |
| | INTERACTIVE PLAY SCULPTURE | PA |
| | WAYFINDING SCULPTURE (FUTURE-INCLUDES PARK SIGN) | PA |
| | PLANTING AREA | (--/L4) |
| | EXISTING STREET LIGHT | |
| | EXISTING POWER POLE | |
| | PARK LIGHT 1 | (2/15-4) |
| | PARK LIGHT 2 | (3/15-4) |
| | PARK LIGHT 3 | (3/15-4) |
| | LIMIT OF WORK | |
| | RIGHT-OF-WAY | |

- ### NOTES
- THE FOLLOWING ITEMS SHALL BE DESIGNED IN COORDINATION WITH PROJECT ARTIST: SCULPTURAL WAYFINDING ELEMENT, INTERACTIVE PLAY SCULPTURE, DECORATIVE EMBELLISHMENT FOR STAGE WALL, AND METAL SCREEN/VINE SUPPORTS AT THEATRE WALL. DONOR ACKNOWLEDGEMENT ELEMENTS SHALL ALSO BE DESIGNED IN COORDINATION WITH THE PROJECT ARTIST (SEE NOTE 2).
 - DONOR ACKNOWLEDGEMENT ELEMENTS TO BE DESIGNED FOR DONOR'S WALK, DONOR'S ARC AND SEAT WALLS. ADDITIONAL ELEMENTS, SUCH AS TREES, TABLES & BENCHES, MAY ALSO BE PROVIDED BY COMMUNITY SPONSORSHIP.
 - PARK LIGHTING SHALL BE DESIGNED TO PROVIDE MINIMUM 5 FOOT CANDLES (fc) IN ALL PAVED AREAS WITH A MINIMUM UNIFORMITY OF 6, PER CONSULTANT'S GUIDE TO PARK DESIGN DEVELOPMENT.
 - PARK CONCRETE PAVING SHALL BE DESIGNED IN ACCORDANCE WITH SDRSD SDG-113, "PAVEMENT DESIGN STANDARDS SCHEDULE J", 6-T "SIDEWALK," AS WELL AS ANY SITE SPECIFIC GEOTECHNICAL RECOMMENDATIONS

L2 MATERIALS PLAN

| DATE | ACTION | REFERENCE DOCUMENTS | COST \$: | ACRES: |
|------|----------------------|---------------------|----------|-----------|
| | SITE ACQUIRED | RESO. NO. | | ACRES: |
| | SITE DEDICATED | ORD. NO. | | ACRES: |
| | GDP CONSULTANT HIRED | RESO. NO. | NAME: | |
| | P&R BOARD APPROVAL | PF&R APPROVAL | DATE: | |
| | INITIAL DEVELOPMENT | CIP NO. | J.O. NO. | DRWG. NO. |
| | | CIP NO. | J.O. NO. | DRWG. NO. |
| | | CIP NO. | J.O. NO. | DRWG. NO. |
| | | CIP NO. | J.O. NO. | DRWG. NO. |
| | | CIP NO. | J.O. NO. | DRWG. NO. |
| | | CIP NO. | J.O. NO. | DRWG. NO. |
| | | CIP NO. | J.O. NO. | DRWG. NO. |

| IMPROVEMENTS SUMMARY (DATA FROM AS-BUILT DRAWINGS) | | | | | |
|--|----------|-------------------|----------|-------------------------|----------|
| ITEM | QUANTITY | ITEM | QUANTITY | ITEM | QUANTITY |
| TOTAL SITE | AC. | TOT LOT | SF | PAVED WALKWAYS | SF |
| IMPROVED AREA | AC. | MULTI-PURPOSE CT. | SF | SECURITY LTS. | STDS. |
| TURF | AC. | TENNIS CTS. | SF | PARK ROADS | SF |
| SHRUB BED | AC. | RESTROOM | SF | PARKING LOT | SF |
| NATURAL | AC. | REC. BLDG. | SF | PARKING STALLS-STD. | SF |
| D.G. PAVING | AC. | POOL BLDG. | SF | PARKING STALLS-DISABLED | SF |
| DIRT INFIELDS | AC. | POOL DECK | SF | COURT GAME AREA | SF |
| | | POOL WATER | SF | LAWN EDGING | LF |
| | | | | BLEACHERS | EA. |
| | | | | TRASH RECEPTACLES | EA. |
| | | | | REVISION | |

CITY OF SAN DIEGO PARK AND RECREATION DEPARTMENT

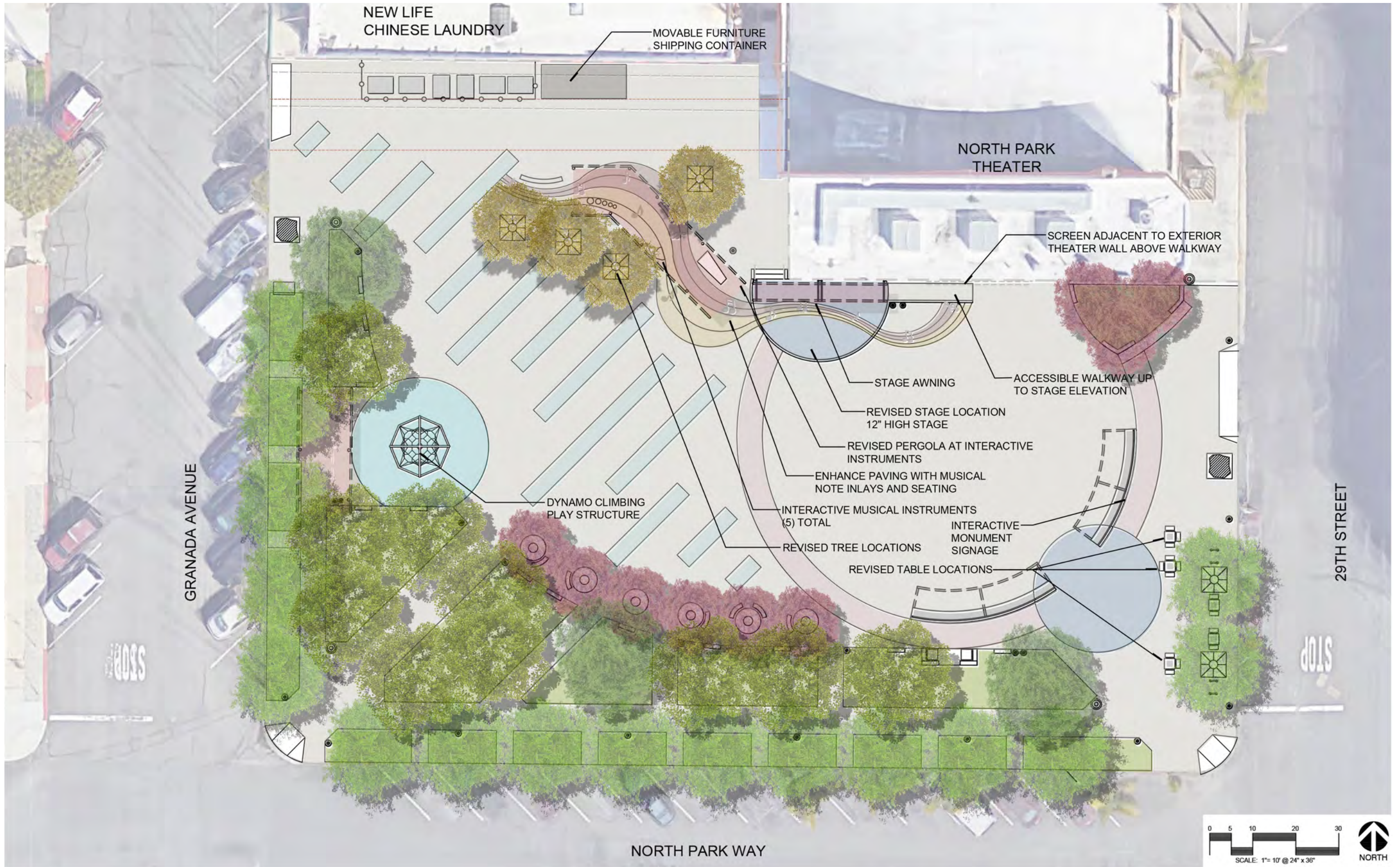
THE GENERAL DEVELOPMENT PLAN

NORTH PARK MINI-PARK

NEIGHBORHOOD PARK

PSD (PSD #)

LAMBERT COORDINATES: THOMAS BROTHERS PAGE:



NORTH PARK MINI PARK
PARK CONCEPTUAL PLAN

