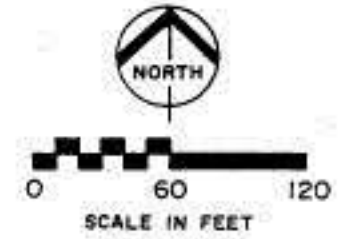
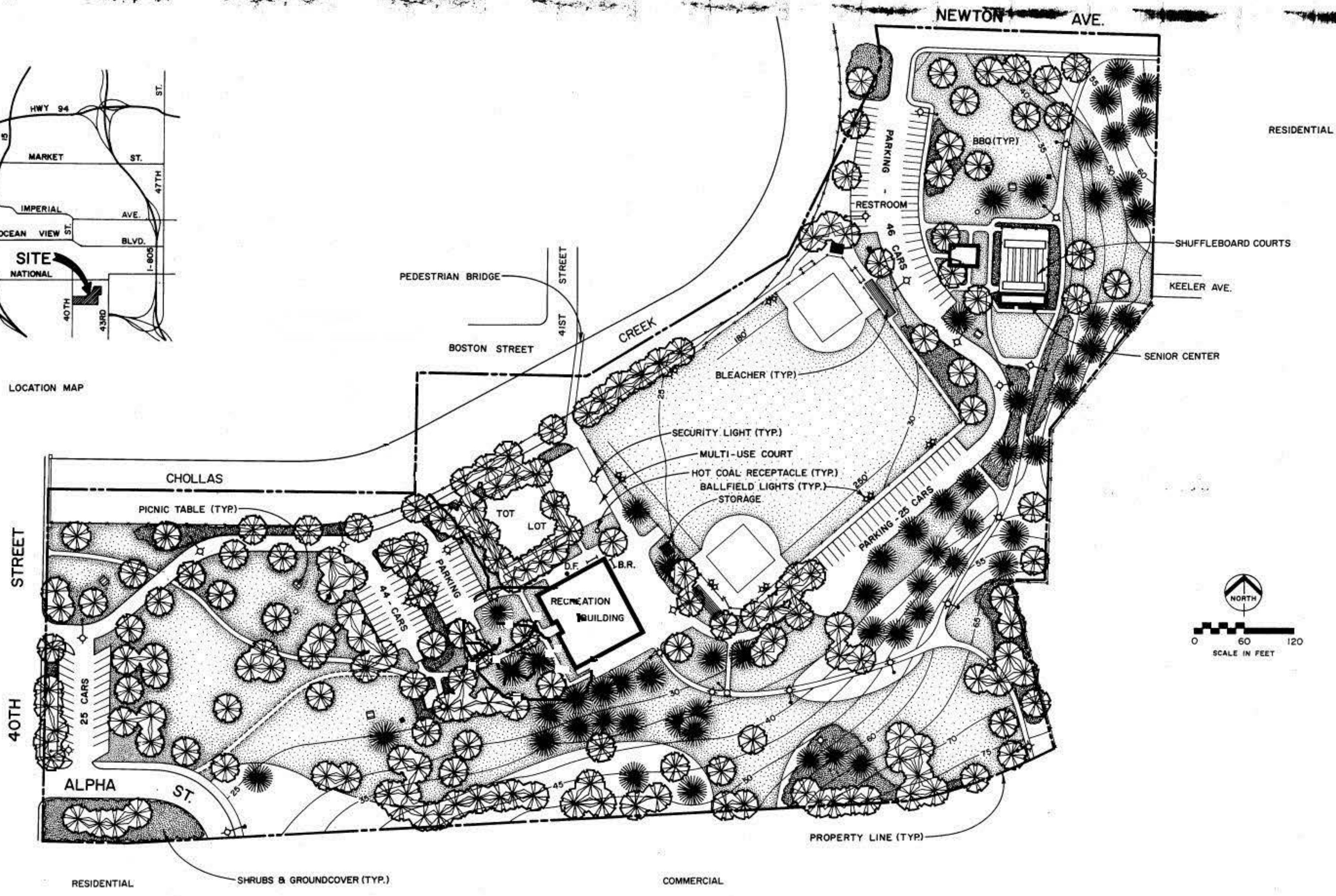


LOCATION MAP



DATA LOG FOR:			
DATE	ACTION	REFERENCE DOCUMENTS	
1-25-49	SITE ACQUIRED	RESO. NO. R-95829	COST 1 ACRES: 17.61
4-24-75	SITE DEDICATED	ORD. NO. O-11574	ACRES: 17.61
	GDP CONSULTANT HIRED	RESO. NO.	NAME STAFF (C.N.A.)
	P.A.R. BOARD APPROVAL	P.F. & R. APPROVAL	
6-14-51	INITIAL DEVELOPMENT	CIP NO.	JO NO. 20132 DRWG. NO. 9904-L
1949	GRADING PLAN	CIP NO.	JO NO. 21037 DRWG. NO. 7518-L
1943	PROP. BOUNDARY	CIP NO.	JO NO. 3575-B DRWG. NO. 6308-L
1957	GRADING PLAN	CIP NO.	JO NO. 20132 DRWG. NO. 3675-D
1-16-59	IMPROVEMENTS	CIP NO.	JO NO. 20132 DRWG. NO. 5214-D
7-69	IMPROVEMENTS	CIP NO.	JO NO. 21857 DRWG. NO. 9617-D
5-28-62	RESTROOM		17131 10029-D
5-16-64	REC. CENTER		17454 11451-D

IMPROVEMENTS SUMMARY (DATA FROM AS-BUILT DRAWINGS)					
ITEM	QUANTITY	ITEM	QUANTITY	ITEM	QUANTITY
TOTAL SITE	17.61 AC	PLAY AREA	8,096 SF	PAVED WALKS	45,159 SF
IMPROVED AREA	16.68 AC	MULTI PURPOSE CT	4,641 SF	PARK ROADS	29,340 SF
TURF	7.76 AC	TENNIS CTS	SF	PARKING LOT	65,904 SF
SHRUB BED	2.94 AC	RESTROOM	683 SF	" " STALLS STD	152
NATURAL	AC	REC. BLDG.	10,620 SF	" " STALLS HDCP	
OTHER LANDSCAPING	1.50 AC	SENIOR CLUBHOUSE	900 SF	COURT GAME AREA	8,904 SF
DIRT INFIELDS	.36 AC	" " DECK	SF	SHUFFLEBOARD COURTS	3,000 S.F.
		" " WATER	SF	LAWN EDGING	13,175 L.F.
				REVISION	T.R. 6/30/95

CITY OF SAN DIEGO PARK and RECREATION DEPARTMENT

THE GENERAL DEVELOPMENT PLAN

SOUTHCREST

COMMUNITY PARK

COUNCIL DIST. NO. 8 COMM. PLAN AREA SOUTHEAST SAN DIEGO 4199 KEELER AVE. PSD. NO. LAMBERT COORDINATES 193-1736 T. JMAS BROS PG. 1289, H-6 660