



THE CITY OF SAN DIEGO



# ANNUAL REPORT

for Fiscal Year 2020

## RANCHO ENCANTADA/STONEBRIDGE ESTATES MAINTENANCE ASSESSMENT DISTRICT

**under the provisions of the**

**San Diego Maintenance Assessment District Procedural Ordinance  
of the San Diego Municipal Code**

**Prepared For**  
**City of San Diego, California**



**Prepared By**  
**EFS Engineering, Inc.**  
P.O. Box 22370  
San Diego, CA 92192-2370  
(858) 752-3490

**June 2019**

# **CITY OF SAN DIEGO**

## **Mayor**

Kevin Faulconer

## **City Council Members**

Barbara Bry  
District 1 (Council President Pro Tem)

Jennifer Campbell  
District 2

Chris Ward  
District 3

Monica Montgomery  
District 4

Mark Kersey  
District 5

Chris Cate  
District 6

Scott Sherman  
District 7

Vivian Moreno  
District 8

Georgette Gómez  
District 9 (Council President)

## **City Attorney**

Mara W. Elliott

## **Chief Operating Officer**

Kris Michell

## **City Clerk**

Elizabeth Maland

## **Independent Budget Analyst**

Andrea Tevlin

## **City Engineer**

James Nagelvoort

# Table of Contents

---

Annual Report for Fiscal Year 2020  
Rancho Encantada/Stonebridge Estates  
Maintenance Assessment District

Preamble .....	1
Executive Summary .....	2
Background .....	3
District Boundary .....	3
Project Description .....	3
Separation of General and Special Benefits .....	4
Cost Estimate.....	4
Annual Cost-Indexing .....	4
Method of Apportionment.....	5
Estimated Benefit of Improvements.....	5
Apportionment Methodology .....	5
Land Use Factor .....	5
Benefit Factor .....	7
Sample Calculations .....	9
Summary Results.....	10

## **EXHIBITS**

**Exhibit A:** District Boundary

**Exhibit B:** Estimated Budget – Revenue & Expense Statement  
for Fiscal Year 2020

**Exhibit C:** Preliminary Assessment Roll for Fiscal Year 2020

# Annual Report for Fiscal Year 2020

## Rancho Encantada/Stonebridge Estates

### Maintenance Assessment District

---

#### Preamble

Pursuant to §65.0220 of the “San Diego Maintenance Assessment District Procedural Ordinance” (being Division 2, Article 5, Chapter 6 of the *San Diego Municipal Code*) and City of San Diego Council Resolution No. R-310618 passed on July 22, 2016, authorizing the continued levy of assessments for the life of the RANCHO ENCANTADA/STONEBRIDGE ESTATES MAINTENANCE ASSESSMENT DISTRICT (hereinafter referred to as “District”), and in accordance with applicable provisions of “Proposition 218” (being Article XIID of the California Constitution), and provisions of the “Proposition 218 Omnibus Implementation Act” (being California Senate Bill 919) (the aforementioned provisions are hereinafter referred to collectively as “applicable law”), and in accordance with Resolution No. \_\_\_\_\_, adopted by the CITY COUNCIL OF THE CITY OF SAN DIEGO, COUNTY OF SAN DIEGO, STATE OF CALIFORNIA, and in connection with the annual proceedings for the District, EFS Engineering, Inc., as Assessment Engineer to the City of San Diego, submits herewith this annual report for the District as required by §65.0220 of the “San Diego Maintenance Assessment District Procedural Ordinance.”

DATE OF FINAL PASSAGE BY THE CITY OF SAN DIEGO,  
COUNTY OF SAN DIEGO, STATE OF CALIFORNIA, ON THE  
\_\_\_\_\_ DAY OF \_\_\_\_\_, 2019.

---

Elizabeth Maland, CITY CLERK  
CITY OF SAN DIEGO  
STATE OF CALIFORNIA

## Executive Summary

**Project:** Rancho Encantada/Stonebridge Estates  
Maintenance Assessment District

**Apportionment Method:** Equivalent Benefit Unit (EBU)

	<b>FY 2019</b>	<b>FY 2020 <sup>(1)</sup></b>	<b>Maximum <sup>(2)</sup> Authorized</b>
<b>Total Parcels Assessed:</b>	1,026	1,026	--
<b>Total Estimated Assessment:</b>	\$137,997	\$137,997	--
<b>Total Number of EBUs:</b>	917.93	919.98	--
<b>Assessment per EBU:</b>	\$150.00	\$150.00	\$393.37 <sup>(3)</sup>

<sup>(1)</sup> FY 2020 is the City's Fiscal Year 2020, which begins July 1, 2019 and ends June 30, 2020. Total Parcels Assessed, Total Estimated Assessment, and assessment apportionment factors may vary from prior fiscal year values due to parcel changes and/or land use re-classifications.

<sup>(2)</sup> Maximum authorized assessment rate subject to cost-indexing as approved by property owners at the time of District formation.

<sup>(3)</sup> Prior fiscal year's maximum authorized annual assessment rate increased by cost-indexing factor of 6.71%.

**Annual Cost-Indexing:** The maximum authorized assessment rates are cost-indexed and will increase (or decrease) annually based on the annual change in the *San Diego Consumer Price Index for Urban Consumers* (SDCPI-U) plus 3%.

---

## Background

The Rancho Encantada/Stonebridge Estates Maintenance Assessment District (District) was established by the City of San Diego (City) on December 6, 2005 by City Council Resolution R-301141. The purpose of the District was, and still is, to fund specifically identified improvements and activities within the boundary of the District.

In conformity with §65.0221 of the “San Diego Maintenance Assessment District Procedural Ordinance,” the City adopted Resolution No. R-310618 on July 22, 2016, approving the annual budget and assessments for Fiscal Year 2017, and authorizing the levy of the assessments for the life of the District, consistent with the benefit findings and assessment apportionment method contained in the approved formational and all subsequently updated Engineer’s Reports (Engineer’s Reports). The Engineer’s Reports are on file with the City Clerk, and incorporated herein by reference.

The District is authorized and administered under the provisions of the “San Diego Maintenance Assessment District Procedural Ordinance.” This annual report has been prepared pursuant to the requirements of §65.0220 of the “San Diego Maintenance Assessment District Procedural Ordinance.”

---

## District Boundary

The District boundary is generally depicted in **Exhibit A**. The District Boundary Map and Assessment Diagram are on file in the Maintenance Assessment Districts section of the Parks and Recreation Department of the City, and, by reference, are made a part of this annual report.

---

## Project Description

The authorized assessments will be used to fund specifically identified improvements and activities within the District. The District improvements and activities generally consist of maintenance and servicing of improvements associated with a six-acre park site referred to as “Sycamore Canyon Park” (see **Figure 1**). Identified park amenities include tot lots, a full-size adult softball field, a little league ball field, a multi-purpose turf area, sports field light poles, security light poles, comfort stations, picnic tables, benches, drinking fountains, trash cans and container enclosures, parking stalls, fences, shrub areas, and trees. The approximate location of the improvements is generally shown in **Figure 2**.





**LEGEND**

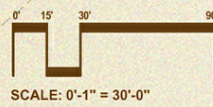
**SYMBOL DESCRIPTION**

- Canopy Trees such as:**  
Jacaranda mimosifolia Jacaranda  
Platanus racemosa California Sycamore  
Rhus lancea African Sumac  
Tipuana tipu Tipu Tree
- Accent Trees such as:**  
Cercis occidentalis Western Redbud
- Edge Shrubs and Groundcover such as:**  
Baccharis pilularis Dwarf Coyote Bush  
Ceanothus spp. Wild Lilac  
Heteromeles arbutifolia Toyon  
Prunus ilicifolia Hollyleaf Cherry  
Rhus integrifolia Lemonade Berry  
Rosa californica California Wild Rose
- Street Side Shrubs and Groundcover such as:**  
Bougainvillea 'Oo La La' Bougainvillea  
Buddleja davidii Butterfly Bush  
Cistus spp. Rockrose  
Echium fastuosum Pride of Madeira  
Limonium perezii Sea Lavender  
Melaleuca nesophila Pink Melaleuca  
Myoporum 'Pacificum' Myoporum  
Raphiolepis indica Indian Hawthorn  
Rosmarinus spp. Rosemary
- Turf - Hybrid Bermuda
- Infield
- Sand
- Rubberized Play Surface
- Playground Equipment
- Comfort Station
- Picnic Table - Standard  
Picnic Table - Accessible
- Bench
- Trash Receptacle
- Bike Rack
- Drinking Fountain
- Security Lighting (single)
- Security Lighting (double)
- Park Sign
- Trash Enclosure
- Drainage Structure in Turf
- Drainage Structure in Hardscape
- Existing Contour
- Proposed Contour
- Sports Field Lighting
- 4' Vinyl Coated Chain Link Fence

**Notes:**  
- Jacarandas shall not be placed over hardscape elements and are to be used only as accent trees in landscape areas.  
- Future storage container shall be placed in location designated on plan.





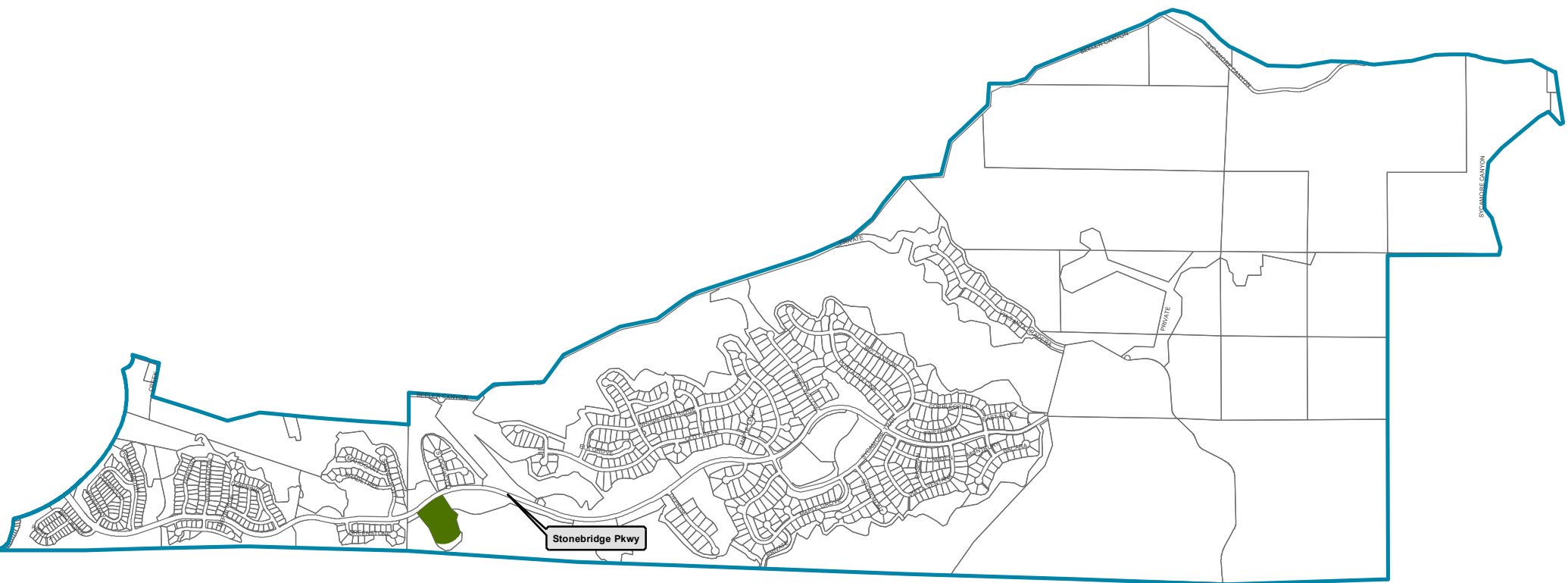
**General Development Plan for Sycamore Canyon Park**  
**STONEBRIDGE**  
*Estates*  
As of July 21, 2005





# Rancho Encantada Maintenance Assessment District

 Rancho Encantada MAD  
 Sycamore Canyon Park Only



## FIGURE 2



For additional detail as to the location, type of improvements, and activities performed by the District, please refer to the maps, improvement plans, engineering drawings, maintenance specifications, the Engineer's Reports and other associated documents on file with the Maintenance Assessment Districts section of the Parks and Recreation Department of the City. These documents, collectively, are incorporated herein by reference and made part of this annual report.

---

## Separation of General and Special Benefits

The identified improvements and activities provide benefits to the parcels located within the District. These benefits are "special benefits" to the extent that they are above and beyond the City's standard level of service, and exclusive of those "general benefits" provided to the public at large or properties located outside the District. By law, only "special benefits" are assessable.

The assessments presented in this annual report are based on the cost of improvements and activities determined to provide "special benefits" in accordance with the Engineer's Reports. For additional detail relative to the separation and quantification of general and special benefits for the District, please refer to the Engineer's Reports, on file with the Maintenance Assessment Districts section of the Parks and Recreation Department of the City.

---

## Cost Estimate

The estimated annual budget (Revenue & Expense Statement) for Fiscal Year 2020 (July 1, 2019 to June 30, 2020 period) is included as **Exhibit B**. The "Other Contributions (Non Assessment Source)" revenue contained in the budget includes the value of improvements and activities determined to provide "general benefits." The District budget with full detail is available for public reference in the Maintenance Assessment Districts section of the Parks and Recreation Department of the City.

## Annual Cost-Indexing

The maximum authorized assessment set forth in the Engineer's Reports is permitted to increase annually based on the published change in the "San Diego Consumer Price Index for Urban Consumers" (SDCPI-U) plus 3%. The annual change in second half SDCPI-U values, as compiled by the *U.S. Bureau of Labor Statistics* (see [www.bls.gov](http://www.bls.gov)), for the prior year period was from 284.464 to 295.018 (a 3.71% increase). In accordance with the approved cost-indexing provisions, the maximum authorized assessment rates have

been increased by 6.71%.

---

## Method of Apportionment

### Estimated Benefit of Improvements

Properties located within the District benefit from maintenance of Sycamore Canyon Park. As a dedicated public amenity over and above the population-based park requirement, the park facilitates greater recreational opportunities to District residents and creates an aesthetic buffer within the subdivision. The presence of the park adds to the desirability and marketability of properties within the District, and further distinguishes the community from others in the City. These are the special benefits conferred upon each property within the District.

The Public Facilities and Services element of the Rancho Encantada Precise Plan and the general policy recommendations found in the City's General Plan establish several goals and guidelines for the planned development of the community. The proposed improvements and activities are consistent with these goals. The City's General Plan and the Rancho Encantada Precise Plan support the establishment of community-based landscape improvement and maintenance districts, such as this District, to fund enhanced improvements and activities.

### Apportionment Methodology

The total cost associated with District improvement and activities will be assessed to the various parcels in the District in proportion to the estimated Equivalent Benefit Units (EBUs) assigned to a parcel in relationship to the total EBUs of all the parcels in the District.

EBUs for each parcel have been determined as a function of two factors – a Land Use Factor and a Benefit Factor – related as shown in the following equation:

$$\text{EBUs} = (\text{Acres or Units}) \times \text{Land Use Factor} \times \text{Benefit Factor}$$

Each of these factors is discussed below. Parcels determined to receive no benefit from the District improvements and activities have been assigned zero EBUs.

### *Land Use Factor*

The identified District improvements and activities are associated with the Public Facilities and Services element of Rancho Encantada Precise Plan and the Recreation element of the City's

General Plan. Trip generation rates (as previously established by the City’s Transportation Planning Section) have been used as the primary basis for assignment of relative benefit between the various land uses within the District. While these trip generation rates address vehicular trips, they are also considered to approximately reflect the magnitude of other modes of transportation (e.g., pedestrian trips, bicycle trips, etc.), and corresponding intensity of use of public recreational facilities.

Trip generation rates provide the required nexus and basis for assigning relative proportionality of potential benefit to the various land use/zoning classifications (as defined by the City’s Municipal Code) within the District. Land use/zoning classifications have been grouped with averaged trip generation rates assigned to establish the Land Use Factors as shown in **Table 1**.

**TABLE 1: Land Use Factors**

<b>Land Use/Zoning</b>	<b>Code</b>	<b>Land Use Factor<sup>(1)</sup></b>
Residential – Detached Single Family	SFD	1.0 per dwelling unit
Residential – Condominium	CND	0.7 per dwelling unit
Residential – Multi-Family & Apartment	MFR	0.7 per dwelling unit
Commercial – Office & Retail	COM	45.0 per acre
Educational – Primary & Secondary	EPS	5.0 per acre
House of Worship	CRH	2.8 per acre
Open Space (designated)	OSP	0 per acre
Park – Undeveloped	PKU	0.5 per acre
Street/Roadway	STR	0 per acre
Undevelopable	UND	0 per acre
Utility Facility	UTL	3.0 per acre

<sup>(1)</sup> Proportional to trip generation rates contained in the City of San Diego *Trip Generation Manual* dated May 2003.

Designated Open Space serves primarily to preserve natural landscape and habitat. While access for study and passive recreation is often permitted, these activities are allowed only to the extent they are consistent with the primary purpose of natural preservation. Since this land is essentially “unused” in the customary terms of land use (which relate to human use and development), the trip generation rate is zero. Therefore, the designated Open Space itself receives no benefit from the District improvements and activities and has been assigned a Land Use Factor of zero.

While those traveling the streets and roadways visually enjoy the



enhanced District improvements and activities, the actual benefit accrues to the lands at the origins and destinations of their trips, not to the lands of the streets and roadways, themselves. Accordingly, the Streets/Roadways category receives no benefit and has been assigned a Land Use Factor of zero.

The Utility Facility category applies to utility infrastructure facilities, such as water tanks, pump stations, electric power transformer stations, communications facilities, etc. Utility company administrative offices are not included in this category.

### ***Benefit Factor***

The Land Use Factor described above establishes a proportionality of relative intensity of use (or potential use) for the various parcels of land within the District. It does not address the relationship of this use to the specific District improvements and activities. This relationship is reflected in the Benefit Factor utilized in the assessment methodology.

In determining the Benefit Factor for each land use category, the subcomponents of the benefits of District improvements and activities may include some or all of the following: recreation, aesthetics, public safety, view corridors, commercial identity, and drainage. The components used for this District are: recreation and aesthetics.

As Benefit Factors and their subcomponents are intended to reflect the particular relationships between specific land uses within a district and the specific improvements and activities, Benefit Factors will generally vary from one district to another, based on the specific character and nature of the applicable land uses and improvements and activities.

For a given land use, the overall Benefit Factor is equal to the sum of the subcomponent values. If a land use category receives no benefit from a subcomponent, then a value of zero is assigned to that subcomponent. A composite Benefit Factor of 1.0 indicates that full benefit is received. A value less than 1.0 indicates that less than full benefit is received.

The applicable benefit subcomponents and resultant composite Benefit Factors determined for the various Land Use/Zoning categories within this District are as shown in **Table 2**.

**TABLE 2: Benefit Factors by Land Use**

<b>Land Use/Zoning</b>	<b>Recreation (Max. 0.8)</b>	<b>Aesthetics (Max. 0.2)</b>	<b>Benefit Factor (Max. 1.0)</b>
Residential – All	0.8	0.2	1.0
Commercial – Office & Retail	0.2	0.2	0.4
Educational – Primary & Secondary	0.2	0.1	0.3
House of Worship	0.2	0.1	0.3
Open Space (designated)	0.0	0.0	0.0
Park – Undeveloped	0.0	0.1	0.1
Street/Roadway	0.0	0.0	0.0
Undevelopable	0.0	0.0	0.0
Utility Facility	0.0	0.1	0.1

**Recreation.** The degree of recreational benefit received from the District improvements and activities varies among land use categories. Clearly, Residential lands receive the greatest benefit from the additional recreational amenities potential. Lands in the Commercial, Educational and House of Worship categories receive a lesser degree of recreational benefit from fairly limited use of such facilities. Lands in the Open Space, Parks, Street/Roadway, Undevelopable and Utility Facility categories are considered to receive no significant benefit from the recreational aspects of the District improvements and activities, as such enhancements do not affect their function, use, or value.

**Aesthetics.** The degree of benefit received from the aesthetic aspect of the District improvements and activities also varies among land use categories. Generally, by nature of their use, Residential and Commercial lands receive the greatest benefit from aesthetic enhancement projects. Lands in the Educational, House of Worship, Open Space, Parks, Street/Roadway, Undevelopable and Utility Facility categories are considered to receive less significant benefit from the aesthetic aspects of the District improvements and activities, as such enhancements do not affect their function, use, or value.

## Sample Calculations

As described above, the number of Equivalent Benefit Units (EBUs) assigned to each parcel in the District has been calculated based on each parcel's land use and the identified apportionment factors, as shown in the following equation:

$$\text{EBUs} = (\text{Acres or Units}) \times \text{Land Use Factor} \times \text{Benefit Factor}$$

Shown below are sample EBU calculations for several common land uses found in the District.

- **1 Single-Family Residence**  
EBUs = 1 unit x 1.00 x 1.00 = 1.00 EBUs
- **10-unit Apartment Complex**  
EBUs = 10 units x 0.70 x 1.00 = 7.00 EBUs
- **2-acre Elementary School**  
EBUs = 2.00 acres x 5.00 x 0.20 = 2.00 EBUs
- **5-acre Park without Recreation Center**  
EBUs = 5.00 acres x 0.50 x 0.10 = 0.25 EBUs

The total assessment for each parcel in the District is based on the calculated EBUs for the parcel and the applicable unit assessment rate, as shown in the following equation:

$$\text{Total Assessment} = \text{Total EBUs} \times \text{Unit Assessment Rate}$$

Based on the above formula, the EBUs calculated for each property, can be found in the Assessment Roll (**Exhibit C**).



---

## Summary Results

The District Boundary is presented in **Exhibit A**.

An estimate of the annual costs of the improvements and activities provided by the District is included as **Exhibit B**.

The assessment methodology utilized is as described in the text of this annual report. Based on this methodology, Fiscal Year 2020 District assessment for each parcel were calculated and are shown in the Preliminary Assessment Roll (**Exhibit C**).

Each lot or parcel of land within the District has been identified by unique County Assessor's Parcel Number in the Preliminary Assessment Roll and on the Boundary Map and Assessment Diagram referenced herein.

This annual report has been prepared and respectfully submitted by:



EFS ENGINEERING, INC.

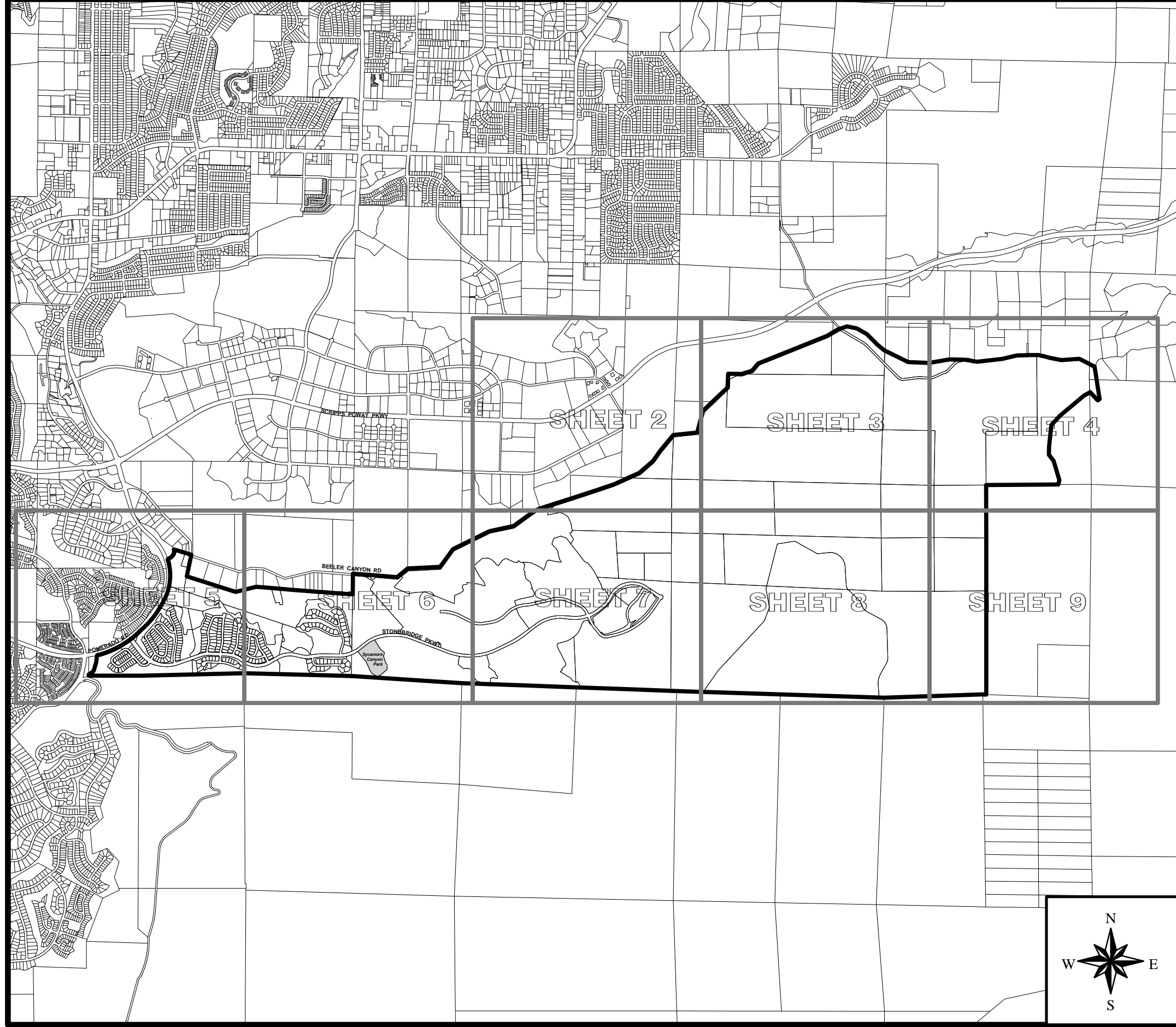
Eugene F. Shank, PE

C 52792

Sharon F. Risse

# EXHIBIT A

## **District Boundary**



SOURCE: SanGIS, City of San Diego, SANDAG, and Boyle Engineering Corporation.

## BOUNDARY MAP

FILED IN THE OFFICE OF THE CITY CLERK OF THE CITY OF SAN DIEGO, STATE OF CALIFORNIA, THIS \_\_\_\_ DAY OF \_\_\_\_\_, 2005.

I HEREBY CERTIFY THAT THE WITHIN MAP SHOWING PROPOSED BOUNDARIES OF THE RANCHO ENCANTADA/STONEBRIDGE ESTATES MAINTENANCE ASSESSMENT DISTRICT, CITY OF SAN DIEGO, STATE OF CALIFORNIA, WAS APPROVED BY THE CITY COUNCIL AT A REGULAR MEETING THEREOF, HELD ON THE \_\_\_\_ DAY OF \_\_\_\_\_, 2005, BY ITS RESOLUTION NO. \_\_\_\_\_.

LIZ MALAND, CITY CLERK  
CITY OF SAN DIEGO  
STATE OF CALIFORNIA

PREPARED BY:  
**BOYLE ENGINEERING CORPORATION**  
7807 Conroy Court, Suite 200, San Diego, California 92111 (619) 268-8080



CITY OF  
SAN DIEGO

AN ASSESSMENT WAS LEVIED BY THE CITY COUNCIL OF THE CITY OF SAN DIEGO ON THE LOTS, PIECES, AND PARCELS OF LAND SHOWN ON THIS ASSESSMENT DIAGRAM. SAID ASSESSMENT WAS LEVIED ON THE \_\_\_\_ DAY OF \_\_\_\_\_, 2005. SAID ASSESSMENT DIAGRAM AND THE ASSESSMENT ROLL WERE RECORDED IN THE OFFICE OF THE SUPERINTENDENT OF STREETS OF THE CITY OF SAN DIEGO, STATE OF CALIFORNIA ON THE \_\_\_\_ DAY OF \_\_\_\_\_, 2005. REFERENCE IS MADE TO THE ASSESSMENT ROLL RECORDED IN THE OFFICE OF THE SUPERINTENDENT OF STREETS FOR THE EXACT AMOUNT OF EACH ASSESSMENT LEVIED AGAINST EACH PARCEL OF LAND SHOWN ON THIS ASSESSMENT DIAGRAM.

NOTE:  
FOR A DETAILED DESCRIPTION OF THE LINES AND DIMENSIONS OF LOTS OR PARCELS SHOWN ON THIS MAP, REFER TO THE COUNTY ASSESSOR'S MAPS WHICH SHALL GOVERN WITH RESPECT TO ALL DETAILS CONCERNING THE LINES AND DIMENSIONS OF SUCH LOTS OR PARCELS.

**LEGEND:**  
 District Boundary  
 Parcel Line  
 Improvement Areas \*

\* REFER TO THE ENGINEER'S REPORT AND REFERENCED DOCUMENTS FOR DESCRIPTION OF IMPROVEMENTS AND SERVICES.

# RANCHO ENCANTADA/STONEBRIDGE ESTATES MAINTENANCE ASSESSMENT DISTRICT

W.O.

DATE: AUG 2005

REVS:



# EXHIBIT B

**Estimated Budget – Revenue & Expense Statement  
for Fiscal Year 2020**

# EXHIBIT B

## REVENUE AND EXPENSE STATEMENT

### Rancho Encantada/Stonebridge Estates Maintenance Assessment District Fund 200101

	FY 2018 ACTUALS	FY 2019 ESTIMATE	FY 2020 PROPOSED
<b>BEGINNING FUND BALANCE</b>			
Surplus (or Deficit) from Prior Year	\$ 25,205.21	\$ 39,879.43	\$ 40,273.43
<b>TOTAL BEGINNING FUND BALANCE</b>	<b>\$ 25,205.21</b>	<b>\$ 39,879.43</b>	<b>\$ 40,273.43</b>
<b>REVENUE</b>			
Assessment Revenue	\$ 134,454.03	\$ 137,690.00	\$ 137,996.52
Interest	\$ 328.41	\$ 370.00	\$ 320.00
Other Contributions (Non Assessment Source)	\$ 6,486.08	\$ 6,131.00	\$ 7,345.00
<b>TOTAL REVENUE</b>	<b>\$ 141,268.52</b>	<b>\$ 144,191.00</b>	<b>\$ 145,661.52</b>
<b>TOTAL BEGINNING FUND BALANCE &amp; REVENUE</b>	<b>\$ 166,473.73</b>	<b>\$ 184,070.43</b>	<b>\$ 185,934.95</b>
<b>OPERATING EXPENSE</b>			
Landscaping Improvements and Activities <sup>(1)</sup>	\$ 110,295.53	\$ 121,610.00	\$ 129,212.00
Misc. Services <sup>(2)</sup>	\$ 263.77	\$ 5,000.00	\$ 5,000.00
Special Districts Administrative Cost	\$ 16,035.00	\$ 17,187.00	\$ 17,598.00
<b>TOTAL OPERATING EXPENSE</b>	<b>\$ 126,594.30</b>	<b>\$ 143,797.00</b>	<b>\$ 151,810.00</b>
<b>TOTAL EXPENSE</b>	<b>\$ 126,594.30</b>	<b>\$ 143,797.00</b>	<b>\$ 151,810.00</b>
<b>TOTAL ENDING FUND BALANCE</b>	<b>\$ 39,879.43</b>	<b>\$ 40,273.43</b>	<b>\$ 34,124.95</b>
<b>NET ANNUAL REVENUE (OR EXPENSE)</b>	<b>\$ 14,674.22</b>	<b>\$ 394.00</b>	<b>\$ (6,148.48)</b>

<sup>(1)</sup> Includes related supplies and utility costs.

<sup>(2)</sup> Includes pest control and City Parks & Recreation Department (Community Parks I) services for maintenance of Sycamore Canyon Park.

*The District budget with full detail is available for public reference in the Maintenance Assessment Districts section of the Parks and Recreation Department of the City of San Diego.*

# EXHIBIT C

**Preliminary Assessment Roll  
for Fiscal Year 2020**



**EXHIBIT C - Assessment Roll (Fiscal Year 2020)**  
**Rancho Encantada/Stonebridge Estates Maintenance Assessment District**

Parcel Number	Acres/ Units <sup>(1)</sup>	Land Use <sup>(2)</sup>	Assessment Factors		Total EBU's	Unit Cost (\$/EBU)	FY 2020 <sup>(4)</sup> Assessment	Owner Name
			Land Use <sup>(2)</sup>	Benefit <sup>(3)</sup>				
320 010 61 00	1.11	OSP	0.00	0.00	0.00	\$150.00	\$0.00	Stonebridge Estates Master Assn
320 010 62 00	7.82	OSP	0.00	0.00	0.00	\$150.00	\$0.00	Stonebridge Estates Master Assn
320 010 63 00	10.51	OSP	0.00	0.00	0.00	\$150.00	\$0.00	Stonebridge Estates Master Assn
320 030 45 00	1.74	OSP	0.00	0.00	0.00	\$150.00	\$0.00	Jin Zhu Trust 03-20-97
320 030 51 00	48.75	OSP	0.00	0.00	0.00	\$150.00	\$0.00	Zhu Jin Trust 03-20-97
320 030 54 00	8.34	OSP	0.00	0.00	0.00	\$150.00	\$0.00	Stonebridge Estates Master Assn
320 030 55 00	11.74	OSP	0.00	0.00	0.00	\$150.00	\$0.00	Stonebridge Estates Master Assn
320 030 57 00	10.34	OSP	0.00	0.00	0.00	\$150.00	\$0.00	Stonebridge Estates Master Assn
320 030 58 00	0.94	OSP	0.00	0.00	0.00	\$150.00	\$0.00	Stonebridge Estates Master Assn
320 030 59 00	0.05	OSP	0.00	0.00	0.00	\$150.00	\$0.00	Stonebridge Estates Master Assn
320 030 60 00	5.35	OSP	0.00	0.00	0.00	\$150.00	\$0.00	Brookfield 8 L L C
320 250 01 00	1.00	SFD	1.00	1.00	1.00	\$150.00	\$150.00	Geng Family Trust 01-25-13
320 250 02 00	1.00	SFD	1.00	1.00	1.00	\$150.00	\$150.00	Nguyen Do P&Vu Thanh Huyen
320 250 03 00	1.00	SFD	1.00	1.00	1.00	\$150.00	\$150.00	Noyes Steven M&Ying X
320 250 04 00	1.00	SFD	1.00	1.00	1.00	\$150.00	\$150.00	Carson Lisa Trust 02-26-04
320 250 05 00	1.00	SFD	1.00	1.00	1.00	\$150.00	\$150.00	Ilter Kanat&Emily
320 250 06 00	1.00	SFD	1.00	1.00	1.00	\$150.00	\$150.00	Blumberg Living Trust 09-24-10
320 250 07 00	1.00	SFD	1.00	1.00	1.00	\$150.00	\$150.00	Gouslin Family Trust 03-29-06
320 250 08 00	1.00	SFD	1.00	1.00	1.00	\$150.00	\$150.00	Kottilingal Sudeep&Sudeep Chandni Trust 10-18-18
320 250 09 00	1.00	SFD	1.00	1.00	1.00	\$150.00	\$150.00	Phan-Lam Family Trust 08-25-17
320 250 10 00	1.00	SFD	1.00	1.00	1.00	\$150.00	\$150.00	Rojas Juan E&Niurka C
320 250 11 00	1.00	SFD	1.00	1.00	1.00	\$150.00	\$150.00	Croissant-Payne Family Trust 11-30-07
320 250 12 00	1.00	SFD	1.00	1.00	1.00	\$150.00	\$150.00	Hicks Douglas&Salvestrin Rhonda
320 250 13 00	1.00	SFD	1.00	1.00	1.00	\$150.00	\$150.00	Naucler Family Trust 11-10-17
320 250 14 00	1.00	SFD	1.00	1.00	1.00	\$150.00	\$150.00	Woods Sonya L
320 250 15 00	1.00	SFD	1.00	1.00	1.00	\$150.00	\$150.00	Maller Joseph A&Kim
320 250 16 00	1.00	SFD	1.00	1.00	1.00	\$150.00	\$150.00	Patwardhan Family Trust 04-13-09
320 250 17 00	1.00	SFD	1.00	1.00	1.00	\$150.00	\$150.00	Zawaideh Fahed&Nisreen Family Trust 09-26-16
320 250 18 00	1.00	SFD	1.00	1.00	1.00	\$150.00	\$150.00	Hernandez Family Trust 03-13-09
320 250 19 00	1.00	SFD	1.00	1.00	1.00	\$150.00	\$150.00	Oh Euisik&Sun K
320 250 20 00	1.00	SFD	1.00	1.00	1.00	\$150.00	\$150.00	Maatta Marko&Annika
320 250 21 00	1.00	SFD	1.00	1.00	1.00	\$150.00	\$150.00	Balentine Robert M&Ng Julia M
320 250 22 00	1.00	SFD	1.00	1.00	1.00	\$150.00	\$150.00	Garadi Siddharth&Nagaraj Shilpa <Le> Garadi Capital Cor
320 250 23 00	1.00	SFD	1.00	1.00	1.00	\$150.00	\$150.00	Clark Family Trust 06-23-08
320 250 24 00	1.00	SFD	1.00	1.00	1.00	\$150.00	\$150.00	Yang Zixiang&Liu Yi
320 250 25 00	1.00	SFD	1.00	1.00	1.00	\$150.00	\$150.00	Williams Frederick S&Margaret C
320 250 26 00	1.00	SFD	1.00	1.00	1.00	\$150.00	\$150.00	Lee Ned&Sylvia J Joint Living Trust
320 250 27 00	1.00	SFD	1.00	1.00	1.00	\$150.00	\$150.00	Danzer Family Trust 11-24-04
320 250 28 00	1.00	SFD	1.00	1.00	1.00	\$150.00	\$150.00	Walneuski Eric&Meghan
320 250 29 00	1.00	SFD	1.00	1.00	1.00	\$150.00	\$150.00	Simpauco Rodelio P&Joyce M
320 250 30 00	1.00	SFD	1.00	1.00	1.00	\$150.00	\$150.00	Burgess Brenda M
320 250 31 00	1.00	SFD	1.00	1.00	1.00	\$150.00	\$150.00	Gagneron Michael&Emma 2003 Trust 06-25-03
320 250 32 00	1.00	SFD	1.00	1.00	1.00	\$150.00	\$150.00	Sheppard Donald K&Jean D
320 250 33 00	1.00	SFD	1.00	1.00	1.00	\$150.00	\$150.00	Tran Emmamarrie
320 250 34 00	1.00	SFD	1.00	1.00	1.00	\$150.00	\$150.00	Stroup Sean&Kelly
320 250 35 00	1.00	SFD	1.00	1.00	1.00	\$150.00	\$150.00	Alfonso Robert S&Cindy V
320 250 36 00	16.27	OSP	0.00	0.00	0.00	\$150.00	\$0.00	Stonebridge Estates Master Assn
320 250 37 00	0.05	OSP	0.00	0.00	0.00	\$150.00	\$0.00	Stonebridge Estates Master Assn
320 250 38 00	0.04	OSP	0.00	0.00	0.00	\$150.00	\$0.00	Stonebridge Estates Master Assn
320 250 39 00	0.05	OSP	0.00	0.00	0.00	\$150.00	\$0.00	Stonebridge Estates Master Assn

**EXHIBIT C - Assessment Roll (Fiscal Year 2020)**  
**Rancho Encantada/Stonebridge Estates Maintenance Assessment District**

Parcel Number	Acres/ Units <sup>(1)</sup>	Land Use <sup>(2)</sup>	Assessment Factors		Total EBU's	Unit Cost (\$/EBU)	FY 2020 <sup>(4)</sup> Assessment	Owner Name
			Land Use <sup>(2)</sup>	Benefit <sup>(3)</sup>				
320 250 40 00	0.05	OSP	0.00	0.00	0.00	\$150.00	\$0.00	Stonebridge Estates Master Assn
320 250 41 00	0.04	OSP	0.00	0.00	0.00	\$150.00	\$0.00	Stonebridge Estates Master Assn
320 250 42 00	0.77	OSP	0.00	0.00	0.00	\$150.00	\$0.00	Stonebridge Estates Master Assn
320 251 01 00	1.00	SFD	1.00	1.00	1.00	\$150.00	\$150.00	Farhoud Jamal&Nahid
320 251 02 00	1.00	SFD	1.00	1.00	1.00	\$150.00	\$150.00	Jung Family Trust 11-05-18
320 251 03 00	1.00	SFD	1.00	1.00	1.00	\$150.00	\$150.00	Ahmed Hany E&Ghada
320 251 04 00	1.00	SFD	1.00	1.00	1.00	\$150.00	\$150.00	Miriyala Narendernath&Suchitra 2004 Trust 07-02-04
320 251 05 00	1.00	SFD	1.00	1.00	1.00	\$150.00	\$150.00	Blevins Benjamin R&Erin M
320 251 06 00	1.00	SFD	1.00	1.00	1.00	\$150.00	\$150.00	Dittamore Ryan V&Amy L
320 251 07 00	1.00	SFD	1.00	1.00	1.00	\$150.00	\$150.00	Harina Francisco S&Elenita V
320 251 08 00	1.00	SFD	1.00	1.00	1.00	\$150.00	\$150.00	Abolmaali-Zarei Living Trust 04-21-06
320 251 09 00	1.00	SFD	1.00	1.00	1.00	\$150.00	\$150.00	Hasen Adam M&Dunia S
320 251 10 00	1.00	SFD	1.00	1.00	1.00	\$150.00	\$150.00	Zabaco Jorge&Valentina
320 251 11 00	1.00	SFD	1.00	1.00	1.00	\$150.00	\$150.00	Soltani Ali
320 251 12 00	1.00	SFD	1.00	1.00	1.00	\$150.00	\$150.00	Vij Gajinder&Sukhvinder
320 251 13 00	1.00	SFD	1.00	1.00	1.00	\$150.00	\$150.00	Rickenbrode John G&Convery Karen D
320 251 14 00	1.00	SFD	1.00	1.00	1.00	\$150.00	\$150.00	Podkozhurnikov Dmitriy
320 251 15 00	1.00	SFD	1.00	1.00	1.00	\$150.00	\$150.00	Chi Qingwei&Li Siling
320 251 16 00	1.00	SFD	1.00	1.00	1.00	\$150.00	\$150.00	Cummins David G&Nguyen Tam Phuong
320 251 17 00	1.00	SFD	1.00	1.00	1.00	\$150.00	\$150.00	Haghkakh Siavash A
320 251 18 00	1.00	SFD	1.00	1.00	1.00	\$150.00	\$150.00	Ginzburg Trust 11-09-17
320 251 19 00	1.00	SFD	1.00	1.00	1.00	\$150.00	\$150.00	Pathuri Family Trust 09-19-17
320 251 20 00	1.00	SFD	1.00	1.00	1.00	\$150.00	\$150.00	Starwood Lane L L C
320 251 21 00	1.00	SFD	1.00	1.00	1.00	\$150.00	\$150.00	Truong Family Trust 01-12-13
320 251 22 00	1.00	SFD	1.00	1.00	1.00	\$150.00	\$150.00	Mellos Family Trust 05-20-04
320 251 23 00	1.00	SFD	1.00	1.00	1.00	\$150.00	\$150.00	Campos Fernando O&Brette K
320 251 24 00	1.00	SFD	1.00	1.00	1.00	\$150.00	\$150.00	Withrow Kiersten M
320 251 25 00	1.00	SFD	1.00	1.00	1.00	\$150.00	\$150.00	Lopez Francisco M&Nunezdelprado Luz B
320 251 26 00	1.00	SFD	1.00	1.00	1.00	\$150.00	\$150.00	Heydari Behruz
320 251 27 00	1.00	SFD	1.00	1.00	1.00	\$150.00	\$150.00	Weng Family Trust 06-11-08
320 251 28 00	1.00	SFD	1.00	1.00	1.00	\$150.00	\$150.00	Schulte Family Trust 12-19-97
320 251 29 00	1.00	SFD	1.00	1.00	1.00	\$150.00	\$150.00	Le Minh Nhat&Nguyen Le Bach Living Trust 05-23-13
320 251 30 00	1.00	SFD	1.00	1.00	1.00	\$150.00	\$150.00	Azucena Efen D&Catalina C
320 251 31 00	1.00	SFD	1.00	1.00	1.00	\$150.00	\$150.00	Hsu Christopher&Wendy Family Trust 09-03-04
320 251 32 00	1.00	SFD	1.00	1.00	1.00	\$150.00	\$150.00	Jaggi Noble&Kaur Mandeep
320 251 33 00	1.00	SFD	1.00	1.00	1.00	\$150.00	\$150.00	Sarwary Masud A Living Trust 06-13-13
320 251 34 00	1.00	SFD	1.00	1.00	1.00	\$150.00	\$150.00	Kraft Terry B&Mary C
320 251 35 00	1.00	SFD	1.00	1.00	1.00	\$150.00	\$150.00	Truong Hung&Nguyen Ai Thuy Truong
320 251 36 00	1.00	SFD	1.00	1.00	1.00	\$150.00	\$150.00	Chalupsky Jean
320 251 37 00	1.00	SFD	1.00	1.00	1.00	\$150.00	\$150.00	Le Khai Van&Vo Thuy Bich Revocable 2013 Trust
320 251 38 00	1.00	SFD	1.00	1.00	1.00	\$150.00	\$150.00	Tripathi Family Trust 03-10-14
320 251 39 00	1.00	SFD	1.00	1.00	1.00	\$150.00	\$150.00	Barioni 2007 Family Trust 08-23-07
320 251 40 00	1.00	SFD	1.00	1.00	1.00	\$150.00	\$150.00	Zalavadiya Rajeshbhai&Archana B
320 251 41 00	1.00	SFD	1.00	1.00	1.00	\$150.00	\$150.00	Jimenez Hermilina P
320 251 42 00	0.06	OSP	0.00	0.00	0.00	\$150.00	\$0.00	Stonebridge Estates Master Assn
320 251 43 00	0.20	OSP	0.00	0.00	0.00	\$150.00	\$0.00	Stonebridge Estates Master Assn
320 251 44 00	0.02	OSP	0.00	0.00	0.00	\$150.00	\$0.00	Stonebridge Estates Master Assn
320 251 45 00	0.14	OSP	0.00	0.00	0.00	\$150.00	\$0.00	Stonebridge Estates Master Assn
320 252 01 00	1.00	SFD	1.00	1.00	1.00	\$150.00	\$150.00	Pugeda Family Trust 01-02-06
320 252 02 00	1.00	SFD	1.00	1.00	1.00	\$150.00	\$150.00	Vuong Tan Ngoc&Anh Revocable Trust 06-26-05

**EXHIBIT C - Assessment Roll (Fiscal Year 2020)**  
**Rancho Encantada/Stonebridge Estates Maintenance Assessment District**

Parcel Number	Acres/ Units <sup>(1)</sup>	Land Use <sup>(2)</sup>	Assessment Factors		Total EBU's	Unit Cost (\$/EBU)	FY 2020 <sup>(4)</sup> Assessment	Owner Name
			Land Use <sup>(2)</sup>	Benefit <sup>(3)</sup>				
320 252 03 00	1.00	SFD	1.00	1.00	1.00	\$150.00	\$150.00	Tayebian Afshin&Aslian Azita
320 252 04 00	1.00	SFD	1.00	1.00	1.00	\$150.00	\$150.00	Hsu Calvin
320 252 05 00	1.00	SFD	1.00	1.00	1.00	\$150.00	\$150.00	Oldham Robin H&Wesley B
320 252 06 00	1.00	SFD	1.00	1.00	1.00	\$150.00	\$150.00	Sharma Manish&Manisha
320 252 07 00	1.00	SFD	1.00	1.00	1.00	\$150.00	\$150.00	Alexander Scott&Joanna
320 252 08 00	1.00	SFD	1.00	1.00	1.00	\$150.00	\$150.00	Alioto Gregory J&Devon S
320 252 09 00	1.00	SFD	1.00	1.00	1.00	\$150.00	\$150.00	Hyde Family Trust 04-23-07
320 252 10 00	1.00	SFD	1.00	1.00	1.00	\$150.00	\$150.00	Deilke Daniel&Kristen
320 252 11 00	1.00	SFD	1.00	1.00	1.00	\$150.00	\$150.00	Strongwater Jason G&Pamela J
320 252 12 00	1.00	SFD	1.00	1.00	1.00	\$150.00	\$150.00	Lemoine John R&Schearing-Lemoine Jody
320 252 13 00	1.00	SFD	1.00	1.00	1.00	\$150.00	\$150.00	Mylavarapu Narayana R&Padmini K
320 252 14 00	1.00	SFD	1.00	1.00	1.00	\$150.00	\$150.00	Lukas Family Trust 09-30-11
320 252 15 00	1.00	SFD	1.00	1.00	1.00	\$150.00	\$150.00	Pugeda Cesar B&Cynthia A
320 252 16 00	1.00	SFD	1.00	1.00	1.00	\$150.00	\$150.00	Rodriguez John C U&Laryna B O
320 252 17 00	1.00	SFD	1.00	1.00	1.00	\$150.00	\$150.00	Haughey Michael P&Miriam I
320 252 18 00	1.00	SFD	1.00	1.00	1.00	\$150.00	\$150.00	Pereira Anthony O&Melina T
320 252 19 00	1.00	SFD	1.00	1.00	1.00	\$150.00	\$150.00	Chuang Michael&Carrie Family Trust 06-10-15
320 252 20 00	1.00	SFD	1.00	1.00	1.00	\$150.00	\$150.00	Hua Binh
320 252 21 00	1.00	SFD	1.00	1.00	1.00	\$150.00	\$150.00	Wong Cindy
320 252 22 00	1.00	SFD	1.00	1.00	1.00	\$150.00	\$150.00	Khan Living Trust 04-19-18
320 252 23 00	1.00	SFD	1.00	1.00	1.00	\$150.00	\$150.00	Macha Raju
320 252 24 00	1.00	SFD	1.00	1.00	1.00	\$150.00	\$150.00	Rose Family Trust 09-04-03
320 252 25 00	1.00	SFD	1.00	1.00	1.00	\$150.00	\$150.00	Joseph Patrick M&Megan A
320 252 26 00	1.00	SFD	1.00	1.00	1.00	\$150.00	\$150.00	Robbins Steve&Hampton Brenna
320 252 27 00	1.00	SFD	1.00	1.00	1.00	\$150.00	\$150.00	Chourey Aashish&Karuna
320 252 28 00	1.00	SFD	1.00	1.00	1.00	\$150.00	\$150.00	Ahluwalia Family Trust 07-20-04
320 252 29 00	1.00	SFD	1.00	1.00	1.00	\$150.00	\$150.00	Mitchell Russell T&Sangeeta A
320 252 30 00	1.00	SFD	1.00	1.00	1.00	\$150.00	\$150.00	Truong Katherine
320 252 31 00	1.00	SFD	1.00	1.00	1.00	\$150.00	\$150.00	Khamphavong Vance Lye&Bonna Jan
320 252 32 00	1.00	SFD	1.00	1.00	1.00	\$150.00	\$150.00	Khuu Andy&Katy M
320 252 33 00	1.00	SFD	1.00	1.00	1.00	\$150.00	\$150.00	Poon Henry K Revocable Trust 05-05-55
320 252 34 00	6.05	OSP	0.00	0.00	0.00	\$150.00	\$0.00	Stonebridge Estates Master Assn
320 252 35 00	5.45	OSP	0.00	0.00	0.00	\$150.00	\$0.00	Stonebridge Estates Master Assn
320 252 36 00	1.76	OSP	0.00	0.00	0.00	\$150.00	\$0.00	Stonebridge Estates Master Assn
320 252 37 00	0.09	OSP	0.00	0.00	0.00	\$150.00	\$0.00	Stonebridge Estates Master Assn
320 252 38 00	0.12	OSP	0.00	0.00	0.00	\$150.00	\$0.00	Stonebridge Estates Master Assn
320 252 39 00	0.25	OSP	0.00	0.00	0.00	\$150.00	\$0.00	Stonebridge Estates Master Assn
320 252 40 00	2.78	OSP	0.00	0.00	0.00	\$150.00	\$0.00	Stonebridge Estates Master Assn
320 252 41 00	0.77	OSP	0.00	0.00	0.00	\$150.00	\$0.00	Stonebridge Estates Master Assn
320 260 01 00	1.00	SFD	1.00	1.00	1.00	\$150.00	\$150.00	Siddiqui Zia R
320 260 02 00	1.00	SFD	1.00	1.00	1.00	\$150.00	\$150.00	Tran Cuong Q&Angie T
320 260 03 00	1.00	SFD	1.00	1.00	1.00	\$150.00	\$150.00	Sanford Family Trust 08-02-18
320 260 04 00	1.00	SFD	1.00	1.00	1.00	\$150.00	\$150.00	Bui Hoa&Tran Nu Family Trust 10-03-16
320 260 05 00	1.00	SFD	1.00	1.00	1.00	\$150.00	\$150.00	Borer-Pastor Revocable Family Trust 12-19-06
320 260 06 00	1.00	SFD	1.00	1.00	1.00	\$150.00	\$150.00	Lasam Inocencio A Iii&Lannie G
320 260 07 00	1.00	SFD	1.00	1.00	1.00	\$150.00	\$150.00	Tereshenkov Arkadi
320 260 08 00	1.00	SFD	1.00	1.00	1.00	\$150.00	\$150.00	Suria Hamza&Farook-Suria Shaarina A
320 260 09 00	1.00	SFD	1.00	1.00	1.00	\$150.00	\$150.00	Alminar Edgardo G&Susana A
320 260 10 00	1.00	SFD	1.00	1.00	1.00	\$150.00	\$150.00	Cordova Family Trust 06-06-12
320 260 11 00	1.00	SFD	1.00	1.00	1.00	\$150.00	\$150.00	Huang Billy Wei&Pang Sze Nga Family Trust 03-24-11

**EXHIBIT C - Assessment Roll (Fiscal Year 2020)**  
**Rancho Encantada/Stonebridge Estates Maintenance Assessment District**

Parcel Number	Acres/ Units <sup>(1)</sup>	Land Use <sup>(2)</sup>	Assessment Factors		Total EBU's	Unit Cost (\$/EBU)	FY 2020 <sup>(4)</sup> Assessment	Owner Name
			Land Use <sup>(2)</sup>	Benefit <sup>(3)</sup>				
320 260 12 00	1.00	SFD	1.00	1.00	1.00	\$150.00	\$150.00	Barba Arnel J&Karen
320 260 13 00	1.00	SFD	1.00	1.00	1.00	\$150.00	\$150.00	Peralta Family Trust 02-05-01
320 260 14 00	1.00	SFD	1.00	1.00	1.00	\$150.00	\$150.00	Linaugh Timothy&Megan T
320 260 15 00	1.00	SFD	1.00	1.00	1.00	\$150.00	\$150.00	Doan Tam
320 260 16 00	1.00	SFD	1.00	1.00	1.00	\$150.00	\$150.00	Scelfo Family Trust 01-07-07
320 260 17 00	1.00	SFD	1.00	1.00	1.00	\$150.00	\$150.00	Hooper Arthur J II&Jessica S
320 260 18 00	1.00	SFD	1.00	1.00	1.00	\$150.00	\$150.00	Mantis Kristina Revocable Trust 11-18-16
320 260 19 00	1.00	SFD	1.00	1.00	1.00	\$150.00	\$150.00	Hole Scott W&Heather Y
320 260 20 00	1.00	SFD	1.00	1.00	1.00	\$150.00	\$150.00	Goldstock Brett M&Pessutti Suzy M
320 260 21 00	1.00	SFD	1.00	1.00	1.00	\$150.00	\$150.00	Tung Family Trust 02-20-06
320 260 22 00	1.00	SFD	1.00	1.00	1.00	\$150.00	\$150.00	Pisegna Family Trust 08-29-13
320 260 23 00	1.00	SFD	1.00	1.00	1.00	\$150.00	\$150.00	Bowles Geoffrey A&Tannaz T
320 260 24 00	1.00	SFD	1.00	1.00	1.00	\$150.00	\$150.00	Keskin Mustafa&Nurcan
320 260 25 00	1.00	SFD	1.00	1.00	1.00	\$150.00	\$150.00	Barger Family Trust 02-12-11
320 260 26 00	1.00	SFD	1.00	1.00	1.00	\$150.00	\$150.00	Huynh Family Trust 05-19-12
320 260 27 00	1.00	SFD	1.00	1.00	1.00	\$150.00	\$150.00	Hundal Palvinder S&Narinder K
320 260 28 00	1.00	SFD	1.00	1.00	1.00	\$150.00	\$150.00	Kramer Family Trust 04-11-18
320 260 29 00	1.00	SFD	1.00	1.00	1.00	\$150.00	\$150.00	Cuasay Nestor S&Lucy S
320 260 30 00	1.00	SFD	1.00	1.00	1.00	\$150.00	\$150.00	Masmila Edgar B&Marilyn Q
320 260 31 00	1.00	SFD	1.00	1.00	1.00	\$150.00	\$150.00	Schneider Mark&Lisa
320 260 32 00	1.00	SFD	1.00	1.00	1.00	\$150.00	\$150.00	Khalil Abraam&Basant B
320 260 33 00	1.00	SFD	1.00	1.00	1.00	\$150.00	\$150.00	Wrightson Shane E&Carolyn R H
320 260 34 00	1.00	SFD	1.00	1.00	1.00	\$150.00	\$150.00	Ross Deistl A&Cheryl A
320 260 35 00	1.00	SFD	1.00	1.00	1.00	\$150.00	\$150.00	Elhag Ismail A&Christine Y
320 260 36 00	1.00	SFD	1.00	1.00	1.00	\$150.00	\$150.00	Dudang Pepito&Helen
320 260 37 00	1.00	SFD	1.00	1.00	1.00	\$150.00	\$150.00	Hom Raymond&Deborah
320 260 38 00	1.00	SFD	1.00	1.00	1.00	\$150.00	\$150.00	Quon David&Lee Catherine
320 260 39 00	1.00	SFD	1.00	1.00	1.00	\$150.00	\$150.00	Bobba Family Trust 04-04-03
320 260 40 00	1.00	SFD	1.00	1.00	1.00	\$150.00	\$150.00	Yang Family Trust 10-30-18
320 260 41 00	1.00	SFD	1.00	1.00	1.00	\$150.00	\$150.00	Hashmi Ahmad B&Nazia B
320 260 42 00	9.60	OSP	0.00	0.00	0.00	\$150.00	\$0.00	Stonebridge Estates Master Assn
320 260 43 00	0.84	OSP	0.00	0.00	0.00	\$150.00	\$0.00	Stonebridge Estates Master Assn
320 260 44 00	0.61	OSP	0.00	0.00	0.00	\$150.00	\$0.00	Stonebridge Estates Master Assn
320 260 45 00	0.08	OSP	0.00	0.00	0.00	\$150.00	\$0.00	Stonebridge Estates Master Assn
320 260 46 00	0.07	OSP	0.00	0.00	0.00	\$150.00	\$0.00	Stonebridge Estates Master Assn
320 260 47 00	0.06	OSP	0.00	0.00	0.00	\$150.00	\$0.00	Stonebridge Estates Master Assn
320 260 48 00	0.15	OSP	0.00	0.00	0.00	\$150.00	\$0.00	Stonebridge Estates Master Assn
320 261 01 00	1.00	SFD	1.00	1.00	1.00	\$150.00	\$150.00	Venkatesh Family Trust 06-09-14
320 261 02 00	1.00	SFD	1.00	1.00	1.00	\$150.00	\$150.00	Bassig Family Trust 04-19-13
320 261 03 00	1.00	SFD	1.00	1.00	1.00	\$150.00	\$150.00	Rowe Daniel D&Renee B
320 261 04 00	1.00	SFD	1.00	1.00	1.00	\$150.00	\$150.00	Sears Pamela S
320 261 05 00	1.00	SFD	1.00	1.00	1.00	\$150.00	\$150.00	Nguyen Dang Dinh&Huyen Thuy Hoa Ton Nu
320 261 06 00	1.00	SFD	1.00	1.00	1.00	\$150.00	\$150.00	Le Khai Van&Vo Thuy Bich Revocable 2013 Trust
320 261 07 00	1.00	SFD	1.00	1.00	1.00	\$150.00	\$150.00	Agha Rafea M&Kurabi Arwa
320 261 08 00	1.00	SFD	1.00	1.00	1.00	\$150.00	\$150.00	Karanam Rohit&Iyer Suparna
320 261 09 00	1.00	SFD	1.00	1.00	1.00	\$150.00	\$150.00	Asirvatham Kirupairaj&Shen I-Chin
320 261 10 00	1.00	SFD	1.00	1.00	1.00	\$150.00	\$150.00	Bolton Brent R&Megan M M
320 261 11 00	1.00	SFD	1.00	1.00	1.00	\$150.00	\$150.00	Vingerelli Enrico G&Diana P
320 261 12 00	1.00	SFD	1.00	1.00	1.00	\$150.00	\$150.00	Erickson Jamie&Jamie Family Trust 05-06-05
320 261 13 00	1.00	SFD	1.00	1.00	1.00	\$150.00	\$150.00	Schmitt Family Trust 11-20-15



**EXHIBIT C - Assessment Roll (Fiscal Year 2020)**  
**Rancho Encantada/Stonebridge Estates Maintenance Assessment District**

Parcel Number	Acres/ Units <sup>(1)</sup>	Land Use <sup>(2)</sup>	Assessment Factors		Total EBU's	Unit Cost (\$/EBU)	FY 2020 <sup>(4)</sup> Assessment	Owner Name
			Land Use <sup>(2)</sup>	Benefit <sup>(3)</sup>				
320 261 14 00	1.00	SFD	1.00	1.00	1.00	\$150.00	\$150.00	Harris Rahbeka&Hall Joshua Revocable Living Trust
320 261 15 00	1.00	SFD	1.00	1.00	1.00	\$150.00	\$150.00	Degua Dominador F&Cynthia
320 261 16 00	1.00	SFD	1.00	1.00	1.00	\$150.00	\$150.00	Caraang Arlen B&Judy R
320 261 17 00	1.00	SFD	1.00	1.00	1.00	\$150.00	\$150.00	Quach-Lam Family Trust 08-17-16
320 261 18 00	1.00	SFD	1.00	1.00	1.00	\$150.00	\$150.00	Ta-Chim Family Trust 08-19-08
320 261 19 00	1.00	SFD	1.00	1.00	1.00	\$150.00	\$150.00	Hatamy Esmatullah
320 261 20 00	1.00	SFD	1.00	1.00	1.00	\$150.00	\$150.00	Rashidian Hamid&Monica M
320 261 21 00	1.00	SFD	1.00	1.00	1.00	\$150.00	\$150.00	Huynh Natalie N
320 261 22 00	1.00	SFD	1.00	1.00	1.00	\$150.00	\$150.00	Green Robert S&Deborah K
320 261 23 00	1.00	SFD	1.00	1.00	1.00	\$150.00	\$150.00	Sarkar Sandip&Mahasweta
320 261 24 00	1.00	SFD	1.00	1.00	1.00	\$150.00	\$150.00	Keller Kathleen M&Leif P
320 261 25 00	1.00	SFD	1.00	1.00	1.00	\$150.00	\$150.00	Salinas Noemi P
320 261 26 00	1.00	SFD	1.00	1.00	1.00	\$150.00	\$150.00	Bagtas Trust 10-03-02
320 261 27 00	1.00	SFD	1.00	1.00	1.00	\$150.00	\$150.00	Gunawan Handoko&Deborah A
320 261 28 00	1.00	SFD	1.00	1.00	1.00	\$150.00	\$150.00	Engler Craig K&Reisinger-Engler Kara A
320 261 29 00	1.00	SFD	1.00	1.00	1.00	\$150.00	\$150.00	Church Joseph&Torres Lucy
320 261 30 00	1.00	SFD	1.00	1.00	1.00	\$150.00	\$150.00	Hara Jerry P&Martha A
320 261 31 00	1.00	SFD	1.00	1.00	1.00	\$150.00	\$150.00	Mcnally Trust 09-14-13
320 261 32 00	1.00	SFD	1.00	1.00	1.00	\$150.00	\$150.00	Senthil Kumar&Shanmughapriya
320 261 33 00	1.00	SFD	1.00	1.00	1.00	\$150.00	\$150.00	Gokulnathan Gayathri M Family Trust 02-19-18
320 261 34 00	1.00	SFD	1.00	1.00	1.00	\$150.00	\$150.00	Rakholia Jay&Aruna J
320 261 35 00	1.00	SFD	1.00	1.00	1.00	\$150.00	\$150.00	Laranang Family Trust 03-15-06
320 261 36 00	1.00	SFD	1.00	1.00	1.00	\$150.00	\$150.00	Phim Trust 01-27-16
320 261 37 00	3.28	OSP	0.00	0.00	0.00	\$150.00	\$0.00	Stonebridge Estates Master Assn
320 261 38 00	6.82	OSP	0.00	0.00	0.00	\$150.00	\$0.00	Stonebridge Estates Master Assn
320 261 39 00	0.11	OSP	0.00	0.00	0.00	\$150.00	\$0.00	Stonebridge Estates Master Assn
320 261 40 00	0.05	OSP	0.00	0.00	0.00	\$150.00	\$0.00	Stonebridge Estates Master Assn
320 261 41 00	0.13	OSP	0.00	0.00	0.00	\$150.00	\$0.00	Stonebridge Ests Master Assn
320 262 01 00	1.00	SFD	1.00	1.00	1.00	\$150.00	\$150.00	Nevarez Roman
320 262 02 00	1.00	SFD	1.00	1.00	1.00	\$150.00	\$150.00	Dahlen Jeffrey R&Trang K
320 262 03 00	1.00	SFD	1.00	1.00	1.00	\$150.00	\$150.00	Ertle Mark&Samphy
320 262 04 00	1.00	SFD	1.00	1.00	1.00	\$150.00	\$150.00	Almonte Jerry&Kathryn
320 262 05 00	1.00	SFD	1.00	1.00	1.00	\$150.00	\$150.00	Wiker David M&Susana L
320 262 06 00	1.00	SFD	1.00	1.00	1.00	\$150.00	\$150.00	Demary Scott&Debra A
320 262 07 00	1.00	SFD	1.00	1.00	1.00	\$150.00	\$150.00	Mclane Catherine P Revocable Trust
320 262 08 00	1.00	SFD	1.00	1.00	1.00	\$150.00	\$150.00	Sheu Fred W&Cindy M
320 262 09 00	1.00	SFD	1.00	1.00	1.00	\$150.00	\$150.00	Hernandez Radelle&Leilani
320 262 10 00	1.00	SFD	1.00	1.00	1.00	\$150.00	\$150.00	Ho Family Trust 03-03-17
320 262 11 00	1.00	SFD	1.00	1.00	1.00	\$150.00	\$150.00	Kundu Kaushik&Poddar Debarati
320 262 12 00	1.00	SFD	1.00	1.00	1.00	\$150.00	\$150.00	Lien Mark&Tran-Lien Ann M
320 262 13 00	1.00	SFD	1.00	1.00	1.00	\$150.00	\$150.00	Yi Jung&Soon Yeo
320 262 14 00	1.00	SFD	1.00	1.00	1.00	\$150.00	\$150.00	Bilak Edita S
320 262 15 00	1.00	SFD	1.00	1.00	1.00	\$150.00	\$150.00	Avery Lee E Jr&Michelle S
320 262 16 00	1.00	SFD	1.00	1.00	1.00	\$150.00	\$150.00	Nguyen Nam Thanh&Truong-Nguyen Giang Le
320 262 17 00	1.00	SFD	1.00	1.00	1.00	\$150.00	\$150.00	Huynh Tammie T
320 262 18 00	1.00	SFD	1.00	1.00	1.00	\$150.00	\$150.00	Ovalekar Family Trust 09-26-15
320 262 19 00	1.00	SFD	1.00	1.00	1.00	\$150.00	\$150.00	Smolnisky Ronald D&Darlene C
320 262 20 00	1.00	SFD	1.00	1.00	1.00	\$150.00	\$150.00	Phan Tammy T Trust 07-08-11
320 262 21 00	9.43	OSP	0.00	0.00	0.00	\$150.00	\$0.00	Stonebridge Estates Master Assn
320 262 22 00	0.09	OSP	0.00	0.00	0.00	\$150.00	\$0.00	Stonebridge Estates Master Assn

**EXHIBIT C - Assessment Roll (Fiscal Year 2020)**  
**Rancho Encantada/Stonebridge Estates Maintenance Assessment District**

Parcel Number	Acres/ Units <sup>(1)</sup>	Land Use <sup>(2)</sup>	Assessment Factors		Total EBU's	Unit Cost (\$/EBU)	FY 2020 <sup>(4)</sup> Assessment	Owner Name
			Land Use <sup>(2)</sup>	Benefit <sup>(3)</sup>				
320 262 23 00	0.03	OSP	0.00	0.00	0.00	\$150.00	\$0.00	Stonebridge Estates Master Assn
320 262 24 00	0.02	OSP	0.00	0.00	0.00	\$150.00	\$0.00	Stonebridge Estates Master Assn
320 263 01 00	1.00	SFD	1.00	1.00	1.00	\$150.00	\$150.00	Vari Alexander V&Julie M Trust 09-19-12
320 263 02 00	1.00	SFD	1.00	1.00	1.00	\$150.00	\$150.00	Qi Chao&Zhan Cenchen
320 263 03 00	1.00	SFD	1.00	1.00	1.00	\$150.00	\$150.00	Yeem Family Trust 08-20-15
320 263 04 00	1.00	SFD	1.00	1.00	1.00	\$150.00	\$150.00	Lorion Lynard S&Maria L
320 263 05 00	1.00	SFD	1.00	1.00	1.00	\$150.00	\$150.00	Rubin Seth&Afari Nilofar
320 263 06 00	1.00	SFD	1.00	1.00	1.00	\$150.00	\$150.00	Bucher Steven H Living Trust 05-18-11
320 263 07 00	1.00	SFD	1.00	1.00	1.00	\$150.00	\$150.00	Nguyen Tran Living Trust 12-21-17
320 263 08 00	1.00	SFD	1.00	1.00	1.00	\$150.00	\$150.00	Gholmieh Ralph&Ayala Aletia
320 263 09 00	1.00	SFD	1.00	1.00	1.00	\$150.00	\$150.00	Nguyen Mai Thi Bach
320 263 10 00	1.00	SFD	1.00	1.00	1.00	\$150.00	\$150.00	Faye Brian&Winnie Trust 02-25-14
320 263 11 00	1.00	SFD	1.00	1.00	1.00	\$150.00	\$150.00	Khorram Navid&Aleluya A
320 263 12 00	1.00	SFD	1.00	1.00	1.00	\$150.00	\$150.00	Salcedo Ana Trust 10-28-13
320 263 13 00	1.00	SFD	1.00	1.00	1.00	\$150.00	\$150.00	Giambrone Brian N&Janine M
320 263 14 00	1.00	SFD	1.00	1.00	1.00	\$150.00	\$150.00	Aguilar Johnnie A&Adora B
320 263 15 00	1.00	SFD	1.00	1.00	1.00	\$150.00	\$150.00	Cresci John R&Cecilia B
320 263 16 00	1.00	SFD	1.00	1.00	1.00	\$150.00	\$150.00	Nguyen Trust 10-07-09
320 263 17 00	1.00	SFD	1.00	1.00	1.00	\$150.00	\$150.00	Villena Dennis D&Christine H
320 263 18 00	1.00	SFD	1.00	1.00	1.00	\$150.00	\$150.00	Go Annie R
320 263 19 00	1.00	SFD	1.00	1.00	1.00	\$150.00	\$150.00	Nutter Family Trust 12-04-18
320 263 20 00	1.00	SFD	1.00	1.00	1.00	\$150.00	\$150.00	Capozello Fred J Jr&Evelyn R
320 263 21 00	1.00	SFD	1.00	1.00	1.00	\$150.00	\$150.00	Harden Kim&Emeline S
320 263 22 00	1.00	SFD	1.00	1.00	1.00	\$150.00	\$150.00	Ortuno Efrain&Jeannette A
320 263 23 00	1.00	SFD	1.00	1.00	1.00	\$150.00	\$150.00	Nanavati Trust 04-22-11
320 263 24 00	1.00	SFD	1.00	1.00	1.00	\$150.00	\$150.00	Handal Francis A&Natalie M
320 263 25 00	4.55	OSP	0.00	0.00	0.00	\$150.00	\$0.00	Stonebridge Estates Master Assn
320 263 26 00	0.28	OSP	0.00	0.00	0.00	\$150.00	\$0.00	Stonebridge Estates Master Assn
320 263 27 00	0.79	OSP	0.00	0.00	0.00	\$150.00	\$0.00	Stonebridge Estates Master Assn
320 263 28 00	0.06	OSP	0.00	0.00	0.00	\$150.00	\$0.00	Stonebridge Estates Master Assn
320 263 29 00	0.05	OSP	0.00	0.00	0.00	\$150.00	\$0.00	Stonebridge Estates Master Assn
320 270 01 00	1.00	SFD	1.00	1.00	1.00	\$150.00	\$150.00	Gabhart Lisa L
320 270 02 00	1.00	SFD	1.00	1.00	1.00	\$150.00	\$150.00	Rollins Anna L R Revocable Trust 03-31-17
320 270 03 00	1.00	SFD	1.00	1.00	1.00	\$150.00	\$150.00	Iovine Daniel&Noa
320 270 04 00	1.00	SFD	1.00	1.00	1.00	\$150.00	\$150.00	Dubney Gregory O&Gia M
320 270 05 00	1.00	SFD	1.00	1.00	1.00	\$150.00	\$150.00	Madbak Family Trust 10-19-99
320 270 06 00	1.00	SFD	1.00	1.00	1.00	\$150.00	\$150.00	Tata Trust 07-25-14
320 270 07 00	1.00	SFD	1.00	1.00	1.00	\$150.00	\$150.00	Rietman Joseph A&Megan L
320 270 08 00	1.00	SFD	1.00	1.00	1.00	\$150.00	\$150.00	Sanfelippo Family Trust 05-30-17
320 270 09 00	1.00	SFD	1.00	1.00	1.00	\$150.00	\$150.00	Cesaire Jacques&Jill
320 270 10 00	1.00	SFD	1.00	1.00	1.00	\$150.00	\$150.00	Chheda Saumil&Goswamy Lipsa
320 270 11 00	1.00	SFD	1.00	1.00	1.00	\$150.00	\$150.00	Moon Hee-Koo&Maria S
320 270 12 00	1.00	SFD	1.00	1.00	1.00	\$150.00	\$150.00	Baker Adam&Shelley Living Trust 08-31-09
320 270 13 00	1.00	SFD	1.00	1.00	1.00	\$150.00	\$150.00	Ngo Michael H&Nguyen Hope A T
320 270 14 00	1.00	SFD	1.00	1.00	1.00	\$150.00	\$150.00	Grosso Revocable Living Trust 03-12-14
320 270 15 00	1.00	SFD	1.00	1.00	1.00	\$150.00	\$150.00	Grazda David&Michelle
320 270 16 00	1.00	SFD	1.00	1.00	1.00	\$150.00	\$150.00	Gundy Allan P&Balistreri Isidoro 2004 Trust 07-02-04
320 270 17 00	1.00	SFD	1.00	1.00	1.00	\$150.00	\$150.00	Lien Hue Van&Nhan Lan Soc
320 270 18 00	1.06	OSP	0.00	0.00	0.00	\$150.00	\$0.00	Stonebridge Estates Master Assn
320 270 19 00	0.10	OSP	0.00	0.00	0.00	\$150.00	\$0.00	Stonebridge Estates Master Assn

**EXHIBIT C - Assessment Roll (Fiscal Year 2020)**  
**Rancho Encantada/Stonebridge Estates Maintenance Assessment District**

Parcel Number	Acres/ Units <sup>(1)</sup>	Land Use <sup>(2)</sup>	Assessment Factors		Total EBU's	Unit Cost (\$/EBU)	FY 2020 <sup>(4)</sup> Assessment	Owner Name
			Land Use <sup>(2)</sup>	Benefit <sup>(3)</sup>				
320 271 01 00	1.00	SFD	1.00	1.00	1.00	\$150.00	\$150.00	Lam Kevin Nhan Tri&Nguyen Lien Kim
320 271 02 00	1.00	SFD	1.00	1.00	1.00	\$150.00	\$150.00	Suberlak Raymond J&Patrice P Trust 04-09-09
320 271 03 00	1.00	SFD	1.00	1.00	1.00	\$150.00	\$150.00	Lin Mong-Shang&Wang Yan Revocable Trust 12-20-17
320 271 04 00	1.00	SFD	1.00	1.00	1.00	\$150.00	\$150.00	Putnam Patricia
320 271 05 00	1.00	SFD	1.00	1.00	1.00	\$150.00	\$150.00	Chuang Family Trust 12-22-10
320 271 06 00	1.00	SFD	1.00	1.00	1.00	\$150.00	\$150.00	Danker Family Trust 02-03-05
320 271 07 00	1.00	SFD	1.00	1.00	1.00	\$150.00	\$150.00	Lewis Marshall E&Marni S Trust 08-26-87
320 271 08 00	1.00	SFD	1.00	1.00	1.00	\$150.00	\$150.00	Wofford James W&Sylvia R
320 271 09 00	1.00	SFD	1.00	1.00	1.00	\$150.00	\$150.00	Diep Family Trust 03-05-11
320 271 10 00	1.00	SFD	1.00	1.00	1.00	\$150.00	\$150.00	Abts Douglas C&Taralyn T
320 271 11 00	1.00	SFD	1.00	1.00	1.00	\$150.00	\$150.00	Benton Family Trust
320 271 12 00	1.00	SFD	1.00	1.00	1.00	\$150.00	\$150.00	Ecija Claudio&Dina Revocable Trust 11-03-93
320 271 13 00	1.00	SFD	1.00	1.00	1.00	\$150.00	\$150.00	Samii Hadi R&Nassrin
320 271 14 00	1.00	SFD	1.00	1.00	1.00	\$150.00	\$150.00	Perry Robert R&Conde-Perry Maria C
320 271 15 00	1.00	SFD	1.00	1.00	1.00	\$150.00	\$150.00	Omar Mahomed A&Tahera A
320 271 16 00	1.00	SFD	1.00	1.00	1.00	\$150.00	\$150.00	Azodi Mansoor&Zohreh
320 271 17 00	1.00	SFD	1.00	1.00	1.00	\$150.00	\$150.00	Madbak Family Trust 10-19-99
320 271 18 00	1.00	SFD	1.00	1.00	1.00	\$150.00	\$150.00	Cooper 1993 Trust 02-11-93
320 271 19 00	1.00	SFD	1.00	1.00	1.00	\$150.00	\$150.00	Waynick Family Trust 06-12-17
320 271 20 00	1.00	SFD	1.00	1.00	1.00	\$150.00	\$150.00	Manzano Jonathan M
320 271 21 00	1.00	SFD	1.00	1.00	1.00	\$150.00	\$150.00	Dutra Joseph C&Pamela C
320 271 25 00	1.00	SFD	1.00	1.00	1.00	\$150.00	\$150.00	Han Family Trust 12-03-02
320 271 26 00	1.00	SFD	1.00	1.00	1.00	\$150.00	\$150.00	Liu Bingli
320 271 27 00	1.00	SFD	1.00	1.00	1.00	\$150.00	\$150.00	Strickland David L&Stephenson-Strickland Lori H
320 271 28 00	1.00	SFD	1.00	1.00	1.00	\$150.00	\$150.00	Bremner Family Trust 02-04-03
320 271 29 00	1.00	SFD	1.00	1.00	1.00	\$150.00	\$150.00	Oconnell Timothy&Tamara Revocable Trust 07-27-98
320 271 30 00	1.00	SFD	1.00	1.00	1.00	\$150.00	\$150.00	Koo Paul&Joanna Family Trust 11-16-95
320 271 31 00	2.76	OSP	0.00	0.00	0.00	\$150.00	\$0.00	Stonebridge Estates Master Assn
320 271 32 00	0.32	OSP	0.00	0.00	0.00	\$150.00	\$0.00	Stonebridge Estates Master Assn
320 271 33 00	1.00	SFD	1.00	1.00	1.00	\$150.00	\$150.00	Oliveira Louis D&Gretchen D
320 271 34 00	1.00	SFD	1.00	1.00	1.00	\$150.00	\$150.00	Armour Family Trust 05-10-05
320 271 35 00	1.00	SFD	1.00	1.00	1.00	\$150.00	\$150.00	Kandace Trust 11-20-15
323 101 02 00	26.05	OSP	0.00	0.00	0.00	\$150.00	\$0.00	City Of San Diego
323 101 04 00	124.65	OSP	0.00	0.00	0.00	\$150.00	\$0.00	City Of San Diego
323 101 07 00	2.22	OSP	0.00	0.00	0.00	\$150.00	\$0.00	City Of San Diego
323 101 08 00	154.45	OSP	0.00	0.00	0.00	\$150.00	\$0.00	City Of San Diego
323 101 09 00	24.00	OSP	0.00	0.00	0.00	\$150.00	\$0.00	City Of San Diego
323 101 10 00	5.82	OSP	0.00	0.00	0.00	\$150.00	\$0.00	Steadman Jhobe&Mydzung Thi
323 111 11 00	40.92	OSP	0.00	0.00	0.00	\$150.00	\$0.00	City Of San Diego
323 111 13 00	88.46	OSP	0.00	0.00	0.00	\$150.00	\$0.00	City Of San Diego
323 111 14 00	1.18	OSP	0.00	0.00	0.00	\$150.00	\$0.00	City Of San Diego
323 111 15 00	2.00	OSP	0.00	0.00	0.00	\$150.00	\$0.00	City Of San Diego
323 111 16 00	13.93	OSP	0.00	0.00	0.00	\$150.00	\$0.00	Steadman Jhobe&Mydzung Thi
323 111 17 00	184.28	OSP	0.00	0.00	0.00	\$150.00	\$0.00	City Of San Diego
325 021 07 00	40.00	OSP	0.00	0.00	0.00	\$150.00	\$0.00	City Of San Diego
325 021 09 00	40.00	OSP	0.00	0.00	0.00	\$150.00	\$0.00	City Of San Diego
325 021 10 00	166.12	OSP	0.00	0.00	0.00	\$150.00	\$0.00	City Of San Diego
325 021 11 00	7.64	OSP	0.00	0.00	0.00	\$150.00	\$0.00	City Of San Diego
325 021 12 00	32.35	OSP	0.00	0.00	0.00	\$150.00	\$0.00	City Of San Diego
325 021 13 00	39.31	OSP	0.00	0.00	0.00	\$150.00	\$0.00	City Of San Diego

**EXHIBIT C - Assessment Roll (Fiscal Year 2020)**  
**Rancho Encantada/Stonebridge Estates Maintenance Assessment District**

Parcel Number	Acres/ Units <sup>(1)</sup>	Land Use <sup>(2)</sup>	Assessment Factors		Total EBU's	Unit Cost (\$/EBU)	FY 2020 <sup>(4)</sup> Assessment	Owner Name
			Land Use <sup>(2)</sup>	Benefit <sup>(3)</sup>				
325 021 14 00	0.69	OSP	0.00	0.00	0.00	\$150.00	\$0.00	City Of San Diego
325 050 10 00	42.56	OSP	0.00	0.00	0.00	\$150.00	\$0.00	City Of San Diego
325 050 15 00	32.25	OSP	0.00	0.00	0.00	\$150.00	\$0.00	City Of San Diego
325 050 17 00	20.27	OSP	0.00	0.00	0.00	\$150.00	\$0.00	City Of San Diego
325 050 18 00	5.04	OSP	0.00	0.00	0.00	\$150.00	\$0.00	City Of San Diego
325 050 19 00	33.53	OSP	0.00	0.00	0.00	\$150.00	\$0.00	City Of San Diego
325 050 20 00	59.73	OSP	0.00	0.00	0.00	\$150.00	\$0.00	City Of San Diego
325 051 04 00	208.55	OSP	0.00	0.00	0.00	\$150.00	\$0.00	City Of San Diego
325 070 09 00	8.93	UTL	3.00	0.10	2.68	\$150.00	\$401.84	San Diego County Water Authority
325 070 10 00	6.70	PKU	0.50	0.10	0.34	\$150.00	\$50.24	City Of San Diego
325 070 11 00	34.24	OSP	0.00	0.00	0.00	\$150.00	\$0.00	Stonebridge Estates Master Assn
325 070 12 00	4.80	OSP	0.00	0.00	0.00	\$150.00	\$0.00	Stonebridge Estates Master Assn
325 070 13 00	8.92	OSP	0.00	0.00	0.00	\$150.00	\$0.00	Stonebridge Estates Master Assn
325 070 14 00	0.24	OSP	0.00	0.00	0.00	\$150.00	\$0.00	City Of San Diego
325 070 15 00	13.06	OSP	0.00	0.00	0.00	\$150.00	\$0.00	Stonebridge Estates Master Assn
325 070 16 00	23.76	OSP	0.00	0.00	0.00	\$150.00	\$0.00	Stonebridge Estates Master Assn
325 070 17 00	22.88	OSP	0.00	0.00	0.00	\$150.00	\$0.00	Sycamore Estates L L C
325 070 18 00	14.96	OSP	0.00	0.00	0.00	\$150.00	\$0.00	Stonebridge Estates Master Assn
325 071 06 00	85.59	OSP	0.00	0.00	0.00	\$150.00	\$0.00	Stonebridge Estates Master Assn
325 071 11 00	8.16	PKU	0.50	0.10	0.41	\$150.00	\$61.20	City Of San Diego
325 071 12 00	9.57	EPS	5.00	0.30	14.36	\$150.00	\$2,153.24	The Roman Catholic Bishop Of San Diego
325 071 13 00	106.00	MFR	0.70	1.00	74.20	\$150.00	\$11,130.00	16217 Stonebridge Parkway L P
325 071 14 00	0.41	OSP	0.00	0.00	0.00	\$150.00	\$0.00	Sycamore Estates L L C
325 071 15 00	0.78	OSP	0.00	0.00	0.00	\$150.00	\$0.00	Sycamore Estates L L C
325 071 16 00	1.29	OSP	0.00	0.00	0.00	\$150.00	\$0.00	Sycamore Estates L L C
325 080 01 00	1.00	SFD	1.00	1.00	1.00	\$150.00	\$150.00	Prabhakaran-Kollamparambil Family Trust 03-01-06
325 080 02 00	1.00	SFD	1.00	1.00	1.00	\$150.00	\$150.00	Vyas Dhwanil&Anuja
325 080 03 00	1.00	SFD	1.00	1.00	1.00	\$150.00	\$150.00	C M S A Trust 11-17-09
325 080 04 00	1.00	SFD	1.00	1.00	1.00	\$150.00	\$150.00	Steele David C&Julie D
325 080 05 00	1.00	SFD	1.00	1.00	1.00	\$150.00	\$150.00	Kadous Tamer A&Bassiouny Nermeen A
325 080 06 00	1.00	SFD	1.00	1.00	1.00	\$150.00	\$150.00	Orie Xing Trust 12-11-02
325 080 07 00	1.00	SFD	1.00	1.00	1.00	\$150.00	\$150.00	Everly Clarence A&Lanette T
325 080 08 00	1.00	SFD	1.00	1.00	1.00	\$150.00	\$150.00	Knudsen Benjamin R
325 080 09 00	1.00	SFD	1.00	1.00	1.00	\$150.00	\$150.00	Matteson 1999 Trust 02-04-99
325 080 10 00	1.00	SFD	1.00	1.00	1.00	\$150.00	\$150.00	Batterton Robert V Ii Tr
325 080 11 00	1.00	SFD	1.00	1.00	1.00	\$150.00	\$150.00	Tran Phat T
325 080 12 00	1.00	SFD	1.00	1.00	1.00	\$150.00	\$150.00	Mell Loren&Gina
325 080 13 00	1.00	SFD	1.00	1.00	1.00	\$150.00	\$150.00	Saffee Family Trust 02-11-04
325 080 14 00	0.12	OSP	0.00	0.00	0.00	\$150.00	\$0.00	Stonebridge Estates Master Assn
325 080 15 00	0.07	OSP	0.00	0.00	0.00	\$150.00	\$0.00	Stonebridge Estates Master Assn
325 080 16 00	0.04	OSP	0.00	0.00	0.00	\$150.00	\$0.00	Stonebridge Estates Master Assn
325 081 01 00	1.00	SFD	1.00	1.00	1.00	\$150.00	\$150.00	Cunningham Andrew M&Virginia A
325 081 02 00	1.00	SFD	1.00	1.00	1.00	\$150.00	\$150.00	Patel Family Trust 3 04-28-00
325 081 03 00	1.00	SFD	1.00	1.00	1.00	\$150.00	\$150.00	Kim Han Su&Ardy Adriana C
325 081 04 00	1.00	SFD	1.00	1.00	1.00	\$150.00	\$150.00	Krambeck Family Trust
325 081 05 00	1.00	SFD	1.00	1.00	1.00	\$150.00	\$150.00	Suder Living Trust 03-18-97
325 081 06 00	1.00	SFD	1.00	1.00	1.00	\$150.00	\$150.00	Gabase Frank R Jr&Barrett Anna S
325 081 07 00	1.00	SFD	1.00	1.00	1.00	\$150.00	\$150.00	Attari Family Trust 02-24-09
325 081 08 00	1.00	SFD	1.00	1.00	1.00	\$150.00	\$150.00	Khwaja David
325 081 09 00	1.00	SFD	1.00	1.00	1.00	\$150.00	\$150.00	Caballes Darwin&Amibel



**EXHIBIT C - Assessment Roll (Fiscal Year 2020)**  
**Rancho Encantada/Stonebridge Estates Maintenance Assessment District**

Parcel Number	Acres/ Units <sup>(1)</sup>	Land Use <sup>(2)</sup>	Assessment Factors		Total EBU's	Unit Cost (\$/EBU)	FY 2020 <sup>(4)</sup> Assessment	Owner Name
			Land Use <sup>(2)</sup>	Benefit <sup>(3)</sup>				
325 081 10 00	1.00	SFD	1.00	1.00	1.00	\$150.00	\$150.00	Tran Thom T Family Trust 10-21-17
325 081 11 00	1.00	SFD	1.00	1.00	1.00	\$150.00	\$150.00	Nguyen Amy Tuong
325 081 12 00	1.00	SFD	1.00	1.00	1.00	\$150.00	\$150.00	Biton Liad&Tanaz K
325 081 13 00	1.00	SFD	1.00	1.00	1.00	\$150.00	\$150.00	Gwynn Anthony K Jr&Alyse L
325 081 14 00	1.00	SFD	1.00	1.00	1.00	\$150.00	\$150.00	Belle Christopher S&Dawn
325 081 15 00	1.00	SFD	1.00	1.00	1.00	\$150.00	\$150.00	Niguidula Troy
325 081 16 00	1.00	SFD	1.00	1.00	1.00	\$150.00	\$150.00	Zobel William li&Sylvia
325 081 17 00	1.00	SFD	1.00	1.00	1.00	\$150.00	\$150.00	Alam Mohammed D&Rumman Sirajam M
325 081 18 00	1.00	SFD	1.00	1.00	1.00	\$150.00	\$150.00	Fu Yijie&Huang Wenjie
325 081 19 00	1.00	SFD	1.00	1.00	1.00	\$150.00	\$150.00	Menefee Shawn A&Jill S
325 081 20 00	1.00	SFD	1.00	1.00	1.00	\$150.00	\$150.00	Collins Michael&Jean L
325 081 21 00	1.00	SFD	1.00	1.00	1.00	\$150.00	\$150.00	Akiki Michael E&Jeanine F
325 081 22 00	1.00	SFD	1.00	1.00	1.00	\$150.00	\$150.00	Lowe Lawrence&Hayward Tyra
325 081 23 00	1.00	SFD	1.00	1.00	1.00	\$150.00	\$150.00	Vitovsky Family Trust 08-26-06
325 081 24 00	0.02	OSP	0.00	0.00	0.00	\$150.00	\$0.00	Stonebridge Estates Master Assn
325 082 01 00	1.00	SFD	1.00	1.00	1.00	\$150.00	\$150.00	Santacroe Mark A&Sarah L Revocable 2012 Trust
325 082 02 00	1.00	SFD	1.00	1.00	1.00	\$150.00	\$150.00	Shina Family Trust 01-08-09
325 082 03 00	1.00	SFD	1.00	1.00	1.00	\$150.00	\$150.00	Hong An Thien&Luu Kimtam
325 082 04 00	1.00	SFD	1.00	1.00	1.00	\$150.00	\$150.00	Waterhouse Family Trust 05-15-02
325 082 05 00	1.00	SFD	1.00	1.00	1.00	\$150.00	\$150.00	Fleischman Family Trust 02-20-17
325 082 06 00	1.00	SFD	1.00	1.00	1.00	\$150.00	\$150.00	Smith Aaron&Lamale-Smith Leah M
325 082 07 00	1.00	SFD	1.00	1.00	1.00	\$150.00	\$150.00	Kane Edward&Janet Trust 06-15-09
325 082 08 00	1.00	SFD	1.00	1.00	1.00	\$150.00	\$150.00	Flournoy Mark&Shin Family Trust 01-24-03
325 082 09 00	1.00	SFD	1.00	1.00	1.00	\$150.00	\$150.00	Nathanson Family Trust 06-27-13
325 082 10 00	1.00	SFD	1.00	1.00	1.00	\$150.00	\$150.00	Truong Phat&Van Kathy
325 082 11 00	1.00	SFD	1.00	1.00	1.00	\$150.00	\$150.00	Mekkoth Ajith S&Bindu R
325 082 12 00	1.00	SFD	1.00	1.00	1.00	\$150.00	\$150.00	Rivas Family Trust 06-30-16
325 082 13 00	1.00	SFD	1.00	1.00	1.00	\$150.00	\$150.00	Truscott Anthony D Trust 08-11-16
325 082 14 00	1.00	SFD	1.00	1.00	1.00	\$150.00	\$150.00	Nabulsi-Abushaban Family Trust 10-18-04
325 082 15 00	1.00	SFD	1.00	1.00	1.00	\$150.00	\$150.00	Chinoy Bilal&Tejal
325 082 16 00	1.00	SFD	1.00	1.00	1.00	\$150.00	\$150.00	Thomas Family Trust 04-04-18
325 082 17 00	1.00	SFD	1.00	1.00	1.00	\$150.00	\$150.00	Sherev Family Trust 02-25-14
325 082 18 00	1.00	SFD	1.00	1.00	1.00	\$150.00	\$150.00	Sorenson Family Trust 02-02-15
325 082 19 00	1.00	SFD	1.00	1.00	1.00	\$150.00	\$150.00	Finnegan Niall V&Elena R
325 082 20 00	1.00	SFD	1.00	1.00	1.00	\$150.00	\$150.00	Vuong Banh&Nancy Ngan Thuy Revocable 2007 Trust 02-
325 082 21 00	1.50	OSP	0.00	0.00	0.00	\$150.00	\$0.00	Stonebridge Estates Master Assn
325 082 22 00	0.17	OSP	0.00	0.00	0.00	\$150.00	\$0.00	Stonebridge Estates Master Assn
325 082 23 00	0.10	OSP	0.00	0.00	0.00	\$150.00	\$0.00	Stonebridge Estates Master Assn
325 082 24 00	0.05	OSP	0.00	0.00	0.00	\$150.00	\$0.00	Stonebridge Estates Master Assn
325 083 01 00	1.00	SFD	1.00	1.00	1.00	\$150.00	\$150.00	Wiffen Stuart P&Sherry A
325 083 02 00	1.00	SFD	1.00	1.00	1.00	\$150.00	\$150.00	Johnston Family Trust 12-09-15
325 083 03 00	1.00	SFD	1.00	1.00	1.00	\$150.00	\$150.00	Baird Brian A&Meagan P
325 083 04 00	1.00	SFD	1.00	1.00	1.00	\$150.00	\$150.00	Chinnabhandar Guruprasad P&Thukral Susmita
325 083 05 00	1.00	SFD	1.00	1.00	1.00	\$150.00	\$150.00	Lee Fern Y&Koh Sandrina Y
325 083 06 00	1.00	SFD	1.00	1.00	1.00	\$150.00	\$150.00	Purchatzke Trust 05-28-15
325 083 07 00	1.00	SFD	1.00	1.00	1.00	\$150.00	\$150.00	Rizzo Joel F Jr&Courtney C
325 083 08 00	1.00	SFD	1.00	1.00	1.00	\$150.00	\$150.00	Bench Shawn R
325 083 09 00	1.00	SFD	1.00	1.00	1.00	\$150.00	\$150.00	Ernest Family Trust 05-09-18
325 083 10 00	1.00	SFD	1.00	1.00	1.00	\$150.00	\$150.00	Mellinger Douglas N&Mariah N
325 083 11 00	1.00	SFD	1.00	1.00	1.00	\$150.00	\$150.00	Kuhn Family Trust 01-20-09

**EXHIBIT C - Assessment Roll (Fiscal Year 2020)**  
**Rancho Encantada/Stonebridge Estates Maintenance Assessment District**

Parcel Number	Acres/ Units <sup>(1)</sup>	Land Use <sup>(2)</sup>	Assessment Factors		Total EBU's	Unit Cost (\$/EBU)	FY 2020 <sup>(4)</sup> Assessment	Owner Name
			Land Use <sup>(2)</sup>	Benefit <sup>(3)</sup>				
325 083 12 00	1.00	SFD	1.00	1.00	1.00	\$150.00	\$150.00	Mather Family Trust 02-21-17
325 083 13 00	1.00	SFD	1.00	1.00	1.00	\$150.00	\$150.00	Minnow Beach Trust 08-19-15
325 083 14 00	1.00	SFD	1.00	1.00	1.00	\$150.00	\$150.00	Bracamonte Carlos&Maria
325 083 15 00	1.00	SFD	1.00	1.00	1.00	\$150.00	\$150.00	Womble Scott W&Debra O
325 083 16 00	1.00	SFD	1.00	1.00	1.00	\$150.00	\$150.00	Tara Jeffrey W&Tristy K
325 083 17 00	1.00	SFD	1.00	1.00	1.00	\$150.00	\$150.00	Zeux L L C
325 083 18 00	1.00	SFD	1.00	1.00	1.00	\$150.00	\$150.00	Saad Walid&Arlene
325 083 19 00	0.02	OSP	0.00	0.00	0.00	\$150.00	\$0.00	Stonebridge Estates Master Assn
325 084 01 00	1.00	SFD	1.00	1.00	1.00	\$150.00	\$150.00	Pachter/Fein Family Trust 01-28-11
325 084 02 00	1.00	SFD	1.00	1.00	1.00	\$150.00	\$150.00	Asuncion Aurelio P
325 084 03 00	1.00	SFD	1.00	1.00	1.00	\$150.00	\$150.00	Cohen Living Trust 10-16-18
325 084 04 00	1.00	SFD	1.00	1.00	1.00	\$150.00	\$150.00	Deshpande Manoj M&Deepali M
325 084 05 00	1.00	SFD	1.00	1.00	1.00	\$150.00	\$150.00	Dewitt Theresa L
325 084 06 00	1.00	SFD	1.00	1.00	1.00	\$150.00	\$150.00	Giovacchini David&Alyssa
325 084 07 00	1.00	SFD	1.00	1.00	1.00	\$150.00	\$150.00	Ziperovich Family Trust 04-02-18
325 084 08 00	1.00	SFD	1.00	1.00	1.00	\$150.00	\$150.00	Lee Long Chi&Linda Lien-Ching Family Trust 06-04-97
325 084 09 00	1.00	SFD	1.00	1.00	1.00	\$150.00	\$150.00	Danishwar Jamila
325 084 10 00	1.00	SFD	1.00	1.00	1.00	\$150.00	\$150.00	Paul Shane M&Nelson-Paul Sylvia
325 084 11 00	1.00	SFD	1.00	1.00	1.00	\$150.00	\$150.00	Hazeltine John M&Tracey D
325 084 12 00	1.00	SFD	1.00	1.00	1.00	\$150.00	\$150.00	Hewitson Family Trust 09-22-17
325 084 13 00	1.00	SFD	1.00	1.00	1.00	\$150.00	\$150.00	Hering Ted&Ashlea
325 084 14 00	1.00	SFD	1.00	1.00	1.00	\$150.00	\$150.00	Taylor Brad&Dianna Trust 08-19-14
325 084 15 00	1.00	SFD	1.00	1.00	1.00	\$150.00	\$150.00	Mao Long&Zhu Liping
325 084 16 00	1.00	SFD	1.00	1.00	1.00	\$150.00	\$150.00	Schwenker Adam&Joan
325 084 17 00	1.00	SFD	1.00	1.00	1.00	\$150.00	\$150.00	Hancock Greg&Michele
325 084 18 00	1.00	SFD	1.00	1.00	1.00	\$150.00	\$150.00	Green David L&Cartier Jolie L Revocable Trust 04-26-02
325 084 19 00	0.07	OSP	0.00	0.00	0.00	\$150.00	\$0.00	Stonebridge Estates Master Assn
325 084 20 00	0.02	OSP	0.00	0.00	0.00	\$150.00	\$0.00	Stonebridge Estates Master Assn
325 090 01 00	1.00	SFD	1.00	1.00	1.00	\$150.00	\$150.00	Batterton Frank R&Susan J Revocable Trust 12-29-99
325 090 02 00	1.00	SFD	1.00	1.00	1.00	\$150.00	\$150.00	Shweid Roger M&Mary E
325 090 03 00	1.00	SFD	1.00	1.00	1.00	\$150.00	\$150.00	Schlundt Suzanne
325 090 04 00	1.00	SFD	1.00	1.00	1.00	\$150.00	\$150.00	Tran Tuan&Thuy Hoa
325 090 05 00	1.00	SFD	1.00	1.00	1.00	\$150.00	\$150.00	Irish James M
325 090 06 00	1.00	SFD	1.00	1.00	1.00	\$150.00	\$150.00	Ramirez Stephen P&Maria E
325 090 07 00	1.00	SFD	1.00	1.00	1.00	\$150.00	\$150.00	Garbo Edward A
325 090 08 00	1.00	SFD	1.00	1.00	1.00	\$150.00	\$150.00	Mcdonald Shawn E&Cheung Sandy W
325 090 09 00	1.00	SFD	1.00	1.00	1.00	\$150.00	\$150.00	Javier Avelino C Jr&Loma S Living Trust 09-16-16
325 090 10 00	1.00	SFD	1.00	1.00	1.00	\$150.00	\$150.00	Collinsworth Catherine S
325 090 11 00	1.00	SFD	1.00	1.00	1.00	\$150.00	\$150.00	Sanderlin Frank D&Dana C
325 090 12 00	1.00	SFD	1.00	1.00	1.00	\$150.00	\$150.00	Ball Family Trust 03-29-18
325 090 13 00	1.00	SFD	1.00	1.00	1.00	\$150.00	\$150.00	Sullivan John&Marta Family Trust 02-08-12
325 090 14 00	1.00	SFD	1.00	1.00	1.00	\$150.00	\$150.00	Szeto-To Family Trust 04-18-00
325 090 15 00	14.59	OSP	0.00	0.00	0.00	\$150.00	\$0.00	Stonebridge Estates Master Assn
325 090 16 00	3.03	OSP	0.00	0.00	0.00	\$150.00	\$0.00	Stonebridge Estates Master Assn
325 090 17 00	0.08	OSP	0.00	0.00	0.00	\$150.00	\$0.00	Stonebridge Estates Master Assn
325 090 18 00	3.15	OSP	0.00	0.00	0.00	\$150.00	\$0.00	Stonebridge Estates Master Assn
325 090 19 00	0.31	OSP	0.00	0.00	0.00	\$150.00	\$0.00	Stonebridge Estates Master Assn
325 091 01 00	1.00	SFD	1.00	1.00	1.00	\$150.00	\$150.00	Babelli Maher
325 091 02 00	1.00	SFD	1.00	1.00	1.00	\$150.00	\$150.00	Kim Family Trust 02-21-03
325 091 03 00	1.00	SFD	1.00	1.00	1.00	\$150.00	\$150.00	Babbitt Trust 02-08-13

**EXHIBIT C - Assessment Roll (Fiscal Year 2020)**  
**Rancho Encantada/Stonebridge Estates Maintenance Assessment District**

Parcel Number	Acres/ Units <sup>(1)</sup>	Land Use <sup>(2)</sup>	Assessment Factors		Total EBU's	Unit Cost (\$/EBU)	FY 2020 <sup>(4)</sup> Assessment	Owner Name
			Land Use <sup>(2)</sup>	Benefit <sup>(3)</sup>				
325 091 04 00	1.00	SFD	1.00	1.00	1.00	\$150.00	\$150.00	Christian Steven Jr&Kia J
325 091 05 00	1.00	SFD	1.00	1.00	1.00	\$150.00	\$150.00	Rudick Jules Trust 07-10-01
325 091 06 00	1.00	SFD	1.00	1.00	1.00	\$150.00	\$150.00	Brown Christopher Michael&Traci Ann
325 091 07 00	1.00	SFD	1.00	1.00	1.00	\$150.00	\$150.00	Hamilton Kevin C
325 091 08 00	1.00	SFD	1.00	1.00	1.00	\$150.00	\$150.00	Smythe Family Trust 11-24-99
325 091 09 00	1.00	SFD	1.00	1.00	1.00	\$150.00	\$150.00	Pirigy Family Trust 12-10-02
325 091 10 00	1.00	SFD	1.00	1.00	1.00	\$150.00	\$150.00	Davis Revocable Trust 10-19-04
325 091 11 00	1.00	SFD	1.00	1.00	1.00	\$150.00	\$150.00	Arredondo Ernesto M Jr
325 091 12 00	1.00	SFD	1.00	1.00	1.00	\$150.00	\$150.00	Tom Family Trust 03-05-18
325 091 13 00	1.00	SFD	1.00	1.00	1.00	\$150.00	\$150.00	Quach Family Trust 02-26-09
325 091 14 00	1.00	SFD	1.00	1.00	1.00	\$150.00	\$150.00	Depriest Richard D&Mary C Living Trust 08-21-05
325 091 15 00	1.00	SFD	1.00	1.00	1.00	\$150.00	\$150.00	Xu Zhigang&Xie Yana
325 091 16 00	1.00	SFD	1.00	1.00	1.00	\$150.00	\$150.00	Hansen Ryan T&Amber L
325 091 17 00	1.00	SFD	1.00	1.00	1.00	\$150.00	\$150.00	Tan Hau H&Nguyen Julie-Mai
325 091 18 00	1.00	SFD	1.00	1.00	1.00	\$150.00	\$150.00	Chevalier Diana L Living Trust 12-05-15
325 091 19 00	1.00	SFD	1.00	1.00	1.00	\$150.00	\$150.00	Lacey-Ravindranathan Trust 07-09-15
325 091 20 00	1.00	SFD	1.00	1.00	1.00	\$150.00	\$150.00	Pearl Family Trust 07-22-11
325 091 21 00	1.00	SFD	1.00	1.00	1.00	\$150.00	\$150.00	Palmer Ranch L P
325 091 22 00	1.00	SFD	1.00	1.00	1.00	\$150.00	\$150.00	Hilton Kenneth L&Valerie V
325 091 23 00	21.16	OSP	0.00	0.00	0.00	\$150.00	\$0.00	Stonebridge Estates Master Association
325 091 24 00	2.72	OSP	0.00	0.00	0.00	\$150.00	\$0.00	Stonebridge Estates Master Association
325 091 25 00	15.58	OSP	0.00	0.00	0.00	\$150.00	\$0.00	Stonebridge Estates Master Association
325 091 26 00	1.46	OSP	0.00	0.00	0.00	\$150.00	\$0.00	Stonebridge Estates Master Assn
325 091 27 00	0.04	OSP	0.00	0.00	0.00	\$150.00	\$0.00	Stonebridge Estates Master Assn
325 091 28 00	0.33	OSP	0.00	0.00	0.00	\$150.00	\$0.00	Stonebridge Estates Master Assn
325 091 29 00	0.02	OSP	0.00	0.00	0.00	\$150.00	\$0.00	Stonebridge Estates Master Association
325 100 01 00	1.00	SFD	1.00	1.00	1.00	\$150.00	\$150.00	Raindrop Family Trust 04-08-17
325 100 02 00	1.00	SFD	1.00	1.00	1.00	\$150.00	\$150.00	Shields L Scott&Brooke M
325 100 03 00	1.00	SFD	1.00	1.00	1.00	\$150.00	\$150.00	Shaw Christopher V&Beitkounou Pauline
325 100 04 00	1.00	SFD	1.00	1.00	1.00	\$150.00	\$150.00	Coggeshall Stephen&Theresa
325 100 05 00	1.00	SFD	1.00	1.00	1.00	\$150.00	\$150.00	Landie Family Trust 02-28-90
325 100 06 00	1.00	SFD	1.00	1.00	1.00	\$150.00	\$150.00	Lyons Michael G&Cynthia G
325 100 07 00	1.00	SFD	1.00	1.00	1.00	\$150.00	\$150.00	Steinback Mark&Donna Revocable Trust 07-26-95
325 100 08 00	1.00	SFD	1.00	1.00	1.00	\$150.00	\$150.00	Katz Family Trust 10-11-10
325 100 09 00	1.00	SFD	1.00	1.00	1.00	\$150.00	\$150.00	Manos Paul J&Gina M
325 100 10 00	1.00	SFD	1.00	1.00	1.00	\$150.00	\$150.00	Billingsley Family Trust 02-27-18
325 100 11 00	1.00	SFD	1.00	1.00	1.00	\$150.00	\$150.00	Phu Dat&Chau Hope N
325 100 12 00	1.00	SFD	1.00	1.00	1.00	\$150.00	\$150.00	Garadi Siddharth&Nagaraj Shilpa <Le> Garadi Capital Cor
325 100 13 00	7.00	OSP	0.00	0.00	0.00	\$150.00	\$0.00	Stonebridge Estates Master Assn
325 100 14 00	0.10	OSP	0.00	0.00	0.00	\$150.00	\$0.00	Stonebridge Estates Master Assn
325 100 15 00	0.06	OSP	0.00	0.00	0.00	\$150.00	\$0.00	Stonebridge Estates Master Assn
325 100 16 00	0.06	OSP	0.00	0.00	0.00	\$150.00	\$0.00	Stonebridge Estates Master Assn
325 100 17 00	0.02	OSP	0.00	0.00	0.00	\$150.00	\$0.00	Stonebridge Estates Master Assn
325 101 01 00	1.00	SFD	1.00	1.00	1.00	\$150.00	\$150.00	Moaveni Nilofar
325 101 02 00	1.00	SFD	1.00	1.00	1.00	\$150.00	\$150.00	Chammas Paul&Nawal Family Trust 04-07-17
325 101 03 00	1.00	SFD	1.00	1.00	1.00	\$150.00	\$150.00	Lam Loc&Liu Qinghua Family Trust 02-04-10
325 101 04 00	1.00	SFD	1.00	1.00	1.00	\$150.00	\$150.00	Jonnala Anila
325 101 05 00	1.00	SFD	1.00	1.00	1.00	\$150.00	\$150.00	Wisniew Greg&Ann
325 101 06 00	1.00	SFD	1.00	1.00	1.00	\$150.00	\$150.00	Johns Brian R&Kelly F Revocable Living Trust 06-09-08
325 101 07 00	1.00	SFD	1.00	1.00	1.00	\$150.00	\$150.00	Yang Jack C&Huynh Minh Thu N

**EXHIBIT C - Assessment Roll (Fiscal Year 2020)**  
**Rancho Encantada/Stonebridge Estates Maintenance Assessment District**

Parcel Number	Acres/ Units <sup>(1)</sup>	Land Use <sup>(2)</sup>	Assessment Factors		Total EBU's	Unit Cost (\$/EBU)	FY 2020 <sup>(4)</sup> Assessment	Owner Name
			Land Use <sup>(2)</sup>	Benefit <sup>(3)</sup>				
325 101 08 00	0.17	OSP	0.00	0.00	0.00	\$150.00	\$0.00	Stonebridge Estates Master Assn
325 102 01 00	1.00	SFD	1.00	1.00	1.00	\$150.00	\$150.00	Manalo Antonio T&Carasig-Manalo Judy G
325 102 02 00	1.00	SFD	1.00	1.00	1.00	\$150.00	\$150.00	Wilson David&Kristi Family Trust 08-12-16
325 102 03 00	1.00	SFD	1.00	1.00	1.00	\$150.00	\$150.00	Hanna-Yousef Family Trust 07-26-12
325 102 04 00	1.00	SFD	1.00	1.00	1.00	\$150.00	\$150.00	Strojan Jason W&Kristin G
325 102 05 00	1.00	SFD	1.00	1.00	1.00	\$150.00	\$150.00	Ross Charles D&Mary A
325 102 06 00	1.00	SFD	1.00	1.00	1.00	\$150.00	\$150.00	Murphy Gregory A&Amanda W
325 102 07 00	1.00	SFD	1.00	1.00	1.00	\$150.00	\$150.00	Bsaibes Family Revocable Living Trust 03-10-16
325 102 08 00	1.00	SFD	1.00	1.00	1.00	\$150.00	\$150.00	Soriano Deomel&Shadette
325 102 09 00	1.00	SFD	1.00	1.00	1.00	\$150.00	\$150.00	Schellhase Mark G&Stephanie A Living Trust 10-26-06
325 102 10 00	1.00	SFD	1.00	1.00	1.00	\$150.00	\$150.00	Duggal Family Trust 03-24-13
325 102 11 00	1.00	SFD	1.00	1.00	1.00	\$150.00	\$150.00	Storgard Family Trust 06-28-12
325 102 12 00	1.00	SFD	1.00	1.00	1.00	\$150.00	\$150.00	Kaohu Scott&Annette Family Trust 06-18-01
325 102 13 00	1.00	SFD	1.00	1.00	1.00	\$150.00	\$150.00	A A L L Trust 01-17-18
325 102 14 00	1.00	SFD	1.00	1.00	1.00	\$150.00	\$150.00	Liu Daochun&Na
325 102 15 00	1.00	SFD	1.00	1.00	1.00	\$150.00	\$150.00	Rogers Bobby E Living Trust 10-16-07
325 102 16 00	1.00	SFD	1.00	1.00	1.00	\$150.00	\$150.00	Heilsberg Family 2005 Trust 12-15-05
325 102 17 00	1.00	SFD	1.00	1.00	1.00	\$150.00	\$150.00	Solhjou Mehdi&Jahansouz Setareh
325 102 18 00	1.00	SFD	1.00	1.00	1.00	\$150.00	\$150.00	Ahmed Reyes Family Trust 11-15-14
325 102 19 00	0.02	OSP	0.00	0.00	0.00	\$150.00	\$0.00	Stonebridge Estates Master Assn
325 103 01 00	1.00	SFD	1.00	1.00	1.00	\$150.00	\$150.00	Passanisi Sebastian J Trust 11-12-13
325 103 02 00	1.00	SFD	1.00	1.00	1.00	\$150.00	\$150.00	Neilio Michael P&Krause Deanna L
325 103 03 00	1.00	SFD	1.00	1.00	1.00	\$150.00	\$150.00	Magnuson Joshua D&Amy F T
325 103 04 00	1.00	SFD	1.00	1.00	1.00	\$150.00	\$150.00	Richard Kelli
325 103 05 00	1.00	SFD	1.00	1.00	1.00	\$150.00	\$150.00	Exner Maurice&Ely R
325 103 06 00	1.00	SFD	1.00	1.00	1.00	\$150.00	\$150.00	Melnyk Adrian L&Sue M
325 103 07 00	1.00	SFD	1.00	1.00	1.00	\$150.00	\$150.00	Pham Tony&Gina
325 103 08 00	1.00	SFD	1.00	1.00	1.00	\$150.00	\$150.00	Fishman Brandon M
325 103 09 00	1.00	SFD	1.00	1.00	1.00	\$150.00	\$150.00	Brown Michael S&Juliann H
325 103 10 00	1.00	SFD	1.00	1.00	1.00	\$150.00	\$150.00	Phomsavanh Suk&Lany
325 103 11 00	1.00	SFD	1.00	1.00	1.00	\$150.00	\$150.00	Suria Hamza&Farook-Suria Ambreen
325 103 12 00	1.00	SFD	1.00	1.00	1.00	\$150.00	\$150.00	Patel Bijal V&Reena
325 103 13 00	1.00	SFD	1.00	1.00	1.00	\$150.00	\$150.00	Salmon Family Trust 01-23-09
325 103 14 00	1.00	SFD	1.00	1.00	1.00	\$150.00	\$150.00	Imas Alexander&Ludmila
325 103 15 00	1.00	SFD	1.00	1.00	1.00	\$150.00	\$150.00	Danilesen Duane M Trust 12-22-17
325 103 16 00	1.00	SFD	1.00	1.00	1.00	\$150.00	\$150.00	Rakholia Ramesh M&Varsha R Trust 03-06-01
325 103 17 00	1.00	SFD	1.00	1.00	1.00	\$150.00	\$150.00	Knox Trust 07-19-04
325 103 18 00	1.00	SFD	1.00	1.00	1.00	\$150.00	\$150.00	Deeg Mark A&Rosario F
325 103 19 00	1.00	SFD	1.00	1.00	1.00	\$150.00	\$150.00	Nguyen Hoa Revocable Living Trust 06-06-07
325 103 20 00	1.00	SFD	1.00	1.00	1.00	\$150.00	\$150.00	Lee Family Trust 10-30-03
325 103 21 00	1.00	SFD	1.00	1.00	1.00	\$150.00	\$150.00	Stieber Thomas C&Fischbein David S
325 103 22 00	1.00	SFD	1.00	1.00	1.00	\$150.00	\$150.00	Ali Lisa S Family Trust 06-29-05
325 103 23 00	1.00	SFD	1.00	1.00	1.00	\$150.00	\$150.00	Sidhu Berinder S&Khusdeep K
325 103 24 00	0.27	OSP	0.00	0.00	0.00	\$150.00	\$0.00	Stonebridge Estates Master Assn
325 103 25 00	0.15	OSP	0.00	0.00	0.00	\$150.00	\$0.00	Stonebridge Estates Master Assn
325 103 26 00	0.06	OSP	0.00	0.00	0.00	\$150.00	\$0.00	Stonebridge Estates Master Assn
325 104 01 00	1.00	SFD	1.00	1.00	1.00	\$150.00	\$150.00	Obara Samuel M&Lucy M
325 104 02 00	1.00	SFD	1.00	1.00	1.00	\$150.00	\$150.00	Thompson Dan&Vicky Living Trust 03-30-00
325 104 03 00	1.00	SFD	1.00	1.00	1.00	\$150.00	\$150.00	Sorensen Family Trust 05-18-05
325 104 04 00	1.00	SFD	1.00	1.00	1.00	\$150.00	\$150.00	Brown Frank A Iv&Kendall K



**EXHIBIT C - Assessment Roll (Fiscal Year 2020)**  
**Rancho Encantada/Stonebridge Estates Maintenance Assessment District**

Parcel Number	Acres/ Units <sup>(1)</sup>	Land Use <sup>(2)</sup>	Assessment Factors		Total EBU's	Unit Cost (\$/EBU)	FY 2020 <sup>(4)</sup> Assessment	Owner Name
			Land Use <sup>(2)</sup>	Benefit <sup>(3)</sup>				
325 104 05 00	1.00	SFD	1.00	1.00	1.00	\$150.00	\$150.00	Soun Savvy&Emery
325 104 06 00	1.00	SFD	1.00	1.00	1.00	\$150.00	\$150.00	Perry Family Trust 03-08-17
325 104 07 00	1.00	SFD	1.00	1.00	1.00	\$150.00	\$150.00	Dabasinskas Michael R&Hilary T
325 104 08 00	1.00	SFD	1.00	1.00	1.00	\$150.00	\$150.00	Boles Family Trust 12-01-03
325 104 09 00	1.00	SFD	1.00	1.00	1.00	\$150.00	\$150.00	Salda Chad D&Annette D
325 104 10 00	1.00	SFD	1.00	1.00	1.00	\$150.00	\$150.00	Pena Peter&Tina N
325 104 11 00	1.00	SFD	1.00	1.00	1.00	\$150.00	\$150.00	Voorhees Thomas G&Patricia R
325 104 12 00	1.00	SFD	1.00	1.00	1.00	\$150.00	\$150.00	Zou Nan Trust
325 104 13 00	1.00	SFD	1.00	1.00	1.00	\$150.00	\$150.00	Collins Daniel P&Rachel A Living Trust 02-08-12
325 104 14 00	1.00	SFD	1.00	1.00	1.00	\$150.00	\$150.00	Potente Anthony&Jocelyn Family Trust 03-08-01
325 104 15 00	1.00	SFD	1.00	1.00	1.00	\$150.00	\$150.00	Field Charles H Jr&Youngchu
325 104 16 00	1.00	SFD	1.00	1.00	1.00	\$150.00	\$150.00	Manzano Rogelio G&Ermadonna M 03-12-00
325 104 17 00	1.00	SFD	1.00	1.00	1.00	\$150.00	\$150.00	K-K Trust 11-19-15
325 104 18 00	1.00	SFD	1.00	1.00	1.00	\$150.00	\$150.00	Dang Family Trust 06-01-04
325 104 19 00	1.00	SFD	1.00	1.00	1.00	\$150.00	\$150.00	Ghassemi Majid&Catin Stacy Living Trust 06-07-15
325 104 20 00	1.00	SFD	1.00	1.00	1.00	\$150.00	\$150.00	Sandhu Family Trust 01-26-06
325 104 21 00	1.00	SFD	1.00	1.00	1.00	\$150.00	\$150.00	Brokowski Trust 12-12-05
325 104 22 00	1.00	SFD	1.00	1.00	1.00	\$150.00	\$150.00	Savel Robert M li&Ronda E
325 104 23 00	6.24	OSP	0.00	0.00	0.00	\$150.00	\$0.00	Stonebridge Estates Master Assn
325 104 24 00	0.17	OSP	0.00	0.00	0.00	\$150.00	\$0.00	Sycamore Estates L L C
325 104 25 00	0.05	OSP	0.00	0.00	0.00	\$150.00	\$0.00	Stonebridge Estates Master Assn
325 104 26 00	0.11	OSP	0.00	0.00	0.00	\$150.00	\$0.00	Stonebridge Estates Master Assn
325 104 27 00	0.03	OSP	0.00	0.00	0.00	\$150.00	\$0.00	Stonebridge Estates Master Assn
325 110 01 00	14.60	OSP	0.00	0.00	0.00	\$150.00	\$0.00	Sycamore Estates L L C
325 110 02 00	117.52	OSP	0.00	0.00	0.00	\$150.00	\$0.00	Sycamore Estates L L C
325 110 03 00	63.86	OSP	0.00	0.00	0.00	\$150.00	\$0.00	Sycamore Estates L L C
325 110 12 00	0.73	OSP	0.00	0.00	0.00	\$150.00	\$0.00	City Of San Diego
325 120 01 00	1.00	SFD	1.00	1.00	1.00	\$150.00	\$150.00	Emara Salem&Shatanoufy Maili E
325 120 02 00	1.00	SFD	1.00	1.00	1.00	\$150.00	\$150.00	Shojaei Farbod&Vaziri Sepideh
325 120 03 00	1.00	SFD	1.00	1.00	1.00	\$150.00	\$150.00	Sao Hy&Wai
325 120 04 00	1.00	SFD	1.00	1.00	1.00	\$150.00	\$150.00	Komarov Grigoriy&Metelskaya Emma
325 120 05 00	1.00	SFD	1.00	1.00	1.00	\$150.00	\$150.00	Vo/Tran Family Trust 09-20-90
325 120 06 00	1.00	SFD	1.00	1.00	1.00	\$150.00	\$150.00	Tucker Lance Frederick&Jill
325 120 07 00	1.00	SFD	1.00	1.00	1.00	\$150.00	\$150.00	Marvasti Masoud A&Farah R
325 120 08 00	1.00	SFD	1.00	1.00	1.00	\$150.00	\$150.00	Kunard Family Trust 05-19-09
325 120 09 00	1.00	SFD	1.00	1.00	1.00	\$150.00	\$150.00	Walden Dennis K&Karen L
325 120 10 00	1.00	SFD	1.00	1.00	1.00	\$150.00	\$150.00	Davis Family Trust 01-21-05
325 120 11 00	1.00	SFD	1.00	1.00	1.00	\$150.00	\$150.00	Boos Janet
325 120 12 00	1.00	SFD	1.00	1.00	1.00	\$150.00	\$150.00	Boesel Robert W&Kathleen A
325 120 13 00	1.00	SFD	1.00	1.00	1.00	\$150.00	\$150.00	Manowitz Family Trust 05-07-13
325 120 14 00	1.00	SFD	1.00	1.00	1.00	\$150.00	\$150.00	Sigismondo Family Trust 09-06-18
325 120 15 00	1.00	SFD	1.00	1.00	1.00	\$150.00	\$150.00	Sanderson Durand&Jennifer A 2017 Revocable Trust 06-0
325 120 16 00	1.00	SFD	1.00	1.00	1.00	\$150.00	\$150.00	Regev Ran
325 120 17 00	1.00	SFD	1.00	1.00	1.00	\$150.00	\$150.00	Hubbard Family Trust 03-01-18
325 120 18 00	1.00	SFD	1.00	1.00	1.00	\$150.00	\$150.00	Nguyen John Duc&Nha Uyen Thi
325 120 19 00	1.00	SFD	1.00	1.00	1.00	\$150.00	\$150.00	Hougen Murray L&Elizabeth L
325 120 20 00	1.00	SFD	1.00	1.00	1.00	\$150.00	\$150.00	Ta Kien Trung&Nguyen Kim Chi
325 120 21 00	1.00	SFD	1.00	1.00	1.00	\$150.00	\$150.00	Benson Family Trust 02-10-14
325 120 22 00	1.00	SFD	1.00	1.00	1.00	\$150.00	\$150.00	Rickel Scott&Robin
325 120 23 00	1.00	SFD	1.00	1.00	1.00	\$150.00	\$150.00	Dambrosio Domenico&Michele L

**EXHIBIT C - Assessment Roll (Fiscal Year 2020)**  
**Rancho Encantada/Stonebridge Estates Maintenance Assessment District**

Parcel Number	Acres/ Units <sup>(1)</sup>	Land Use <sup>(2)</sup>	Assessment Factors		Total EBU's	Unit Cost (\$/EBU)	FY 2020 <sup>(4)</sup> Assessment	Owner Name
			Land Use <sup>(2)</sup>	Benefit <sup>(3)</sup>				
325 120 24 00	1.00	SFD	1.00	1.00	1.00	\$150.00	\$150.00	Emanuele Robert M&Monica L
325 120 25 00	1.00	SFD	1.00	1.00	1.00	\$150.00	\$150.00	Deroo Daniel B&M Armida
325 120 26 00	1.00	SFD	1.00	1.00	1.00	\$150.00	\$150.00	Fabular Ronald T&Irma J L
325 120 27 00	1.00	SFD	1.00	1.00	1.00	\$150.00	\$150.00	Tripathi Family Trust 03-10-14
325 120 28 00	1.00	SFD	1.00	1.00	1.00	\$150.00	\$150.00	Stack Robert N
325 120 29 00	1.00	SFD	1.00	1.00	1.00	\$150.00	\$150.00	Sen Cheng-Fo&Chen Ting-Yin Revocable 2003 Trust 02-0
325 120 30 00	1.00	SFD	1.00	1.00	1.00	\$150.00	\$150.00	Moy Phillip&Wang Jijuan
325 120 31 00	1.00	SFD	1.00	1.00	1.00	\$150.00	\$150.00	Zhang Xuejun&Dong Wei
325 120 32 00	1.00	SFD	1.00	1.00	1.00	\$150.00	\$150.00	Campbell Gregory S&Cerrone Elizabeth T
325 120 33 00	1.00	SFD	1.00	1.00	1.00	\$150.00	\$150.00	Khawaja-Torres Family Trust 11-15-18
325 120 34 00	1.00	SFD	1.00	1.00	1.00	\$150.00	\$150.00	Hosalkar Family Trust 01-23-17
325 120 35 00	1.00	SFD	1.00	1.00	1.00	\$150.00	\$150.00	Morris Adam S
325 120 36 00	1.00	SFD	1.00	1.00	1.00	\$150.00	\$150.00	Bianchini Victor E&Marie M
325 120 37 00	1.00	SFD	1.00	1.00	1.00	\$150.00	\$150.00	Duwright Holdings Almond Orchard Lic
325 120 38 00	1.00	SFD	1.00	1.00	1.00	\$150.00	\$150.00	Heinrichson Kurt&Yvette
325 120 39 00	1.00	SFD	1.00	1.00	1.00	\$150.00	\$150.00	Cui Derrick R&Maybelline
325 120 40 00	1.00	SFD	1.00	1.00	1.00	\$150.00	\$150.00	Alexander James&Jennifer Revocable Living Trust 06-22-0
325 120 41 00	1.00	SFD	1.00	1.00	1.00	\$150.00	\$150.00	Pham Anthony Tai Q
325 120 42 00	1.00	SFD	1.00	1.00	1.00	\$150.00	\$150.00	Martin Family Revocable Trust 11-07-00
325 120 43 00	1.00	SFD	1.00	1.00	1.00	\$150.00	\$150.00	Yaszay Family Trust 03-14-15
325 120 44 00	1.00	SFD	1.00	1.00	1.00	\$150.00	\$150.00	Vandegrift Jon H&Dudek-Vandegrift Sharon A Family Trust
325 120 45 00	1.00	SFD	1.00	1.00	1.00	\$150.00	\$150.00	Finnegan Sean F
325 120 46 00	1.00	SFD	1.00	1.00	1.00	\$150.00	\$150.00	Kogler Keith P&Gordon Victoria E
325 120 47 00	1.00	SFD	1.00	1.00	1.00	\$150.00	\$150.00	Kim Hyun Wook&Shim Sun Hwa
325 120 48 00	1.00	SFD	1.00	1.00	1.00	\$150.00	\$150.00	Poate Edward&Kimberly Family Trust 08-08-02
325 120 49 00	1.00	SFD	1.00	1.00	1.00	\$150.00	\$150.00	Dominick Joy&Justin Family Trust 07-11-13
325 120 50 00	1.00	SFD	1.00	1.00	1.00	\$150.00	\$150.00	Wang Family Trust 03-28-07
325 120 51 00	1.00	SFD	1.00	1.00	1.00	\$150.00	\$150.00	Wietfeldt Richard&Anzhelika
325 120 52 00	1.00	SFD	1.00	1.00	1.00	\$150.00	\$150.00	Whitt Samuel P&Tracy L
325 120 53 00	1.00	SFD	1.00	1.00	1.00	\$150.00	\$150.00	Vargas Gustavo V&Yulexis L
325 120 54 00	0.01	OSP	0.00	0.00	0.00	\$150.00	\$0.00	Stonebridge Estates Master Assn
325 120 55 00	2.58	OSP	0.00	0.00	0.00	\$150.00	\$0.00	Stonebridge Estates Master Assn
325 120 56 00	1.44	OSP	0.00	0.00	0.00	\$150.00	\$0.00	Stonebridge Estates Master Assn
325 120 57 00	2.13	OSP	0.00	0.00	0.00	\$150.00	\$0.00	Stonebridge Estates Master Assn
325 120 58 00	1.22	OSP	0.00	0.00	0.00	\$150.00	\$0.00	Stonebridge Estates Master Assn
325 120 59 00	0.01	OSP	0.00	0.00	0.00	\$150.00	\$0.00	Stonebridge Estates Master Assn
325 120 60 00	0.98	OSP	0.00	0.00	0.00	\$150.00	\$0.00	Stonebridge Estates Master Assn
325 120 61 00	0.01	OSP	0.00	0.00	0.00	\$150.00	\$0.00	Stonebridge Estates Master Association
325 120 62 00	0.01	OSP	0.00	0.00	0.00	\$150.00	\$0.00	Stonebridge Estates Master Association
325 120 63 00	0.01	OSP	0.00	0.00	0.00	\$150.00	\$0.00	Stonebridge Estates Master Association
325 120 64 00	1.23	OSP	0.00	0.00	0.00	\$150.00	\$0.00	Stonebridge Estates Master Assn
325 121 01 00	1.00	SFD	1.00	1.00	1.00	\$150.00	\$150.00	Radchenko Family Trust 12-19-16
325 121 02 00	1.00	SFD	1.00	1.00	1.00	\$150.00	\$150.00	Negahban Mehdi&Susan
325 121 03 00	1.00	SFD	1.00	1.00	1.00	\$150.00	\$150.00	Peralta Dominic J&Estela M
325 121 04 00	1.00	SFD	1.00	1.00	1.00	\$150.00	\$150.00	Yoo Byung Sun&Jeannie
325 121 05 00	1.00	SFD	1.00	1.00	1.00	\$150.00	\$150.00	Koirala Kanchan
325 121 06 00	1.00	SFD	1.00	1.00	1.00	\$150.00	\$150.00	Hughes Robert B&Judith L
325 121 07 00	1.00	SFD	1.00	1.00	1.00	\$150.00	\$150.00	Shepard Scott&Michele
325 121 08 00	1.00	SFD	1.00	1.00	1.00	\$150.00	\$150.00	Clatterbuck Michelle M&Neil D
325 121 09 00	1.00	SFD	1.00	1.00	1.00	\$150.00	\$150.00	Stevens Greg J&Julie

**EXHIBIT C - Assessment Roll (Fiscal Year 2020)**  
**Rancho Encantada/Stonebridge Estates Maintenance Assessment District**

Parcel Number	Acres/ Units <sup>(1)</sup>	Land Use <sup>(2)</sup>	Assessment Factors		Total EBU's	Unit Cost (\$/EBU)	FY 2020 <sup>(4)</sup> Assessment	Owner Name
			Land Use <sup>(2)</sup>	Benefit <sup>(3)</sup>				
325 121 10 00	1.00	SFD	1.00	1.00	1.00	\$150.00	\$150.00	Brett Brendan D
325 121 11 00	1.00	SFD	1.00	1.00	1.00	\$150.00	\$150.00	Hofmeister Family Trust 06-05-08
325 121 12 00	1.00	SFD	1.00	1.00	1.00	\$150.00	\$150.00	Yuan Zhenli&Dong Xue
325 121 14 00	1.00	SFD	1.00	1.00	1.00	\$150.00	\$150.00	Protech Investments Llc
325 121 15 00	1.00	SFD	1.00	1.00	1.00	\$150.00	\$150.00	Kale Family Trust 04-03-12
325 121 16 00	1.00	SFD	1.00	1.00	1.00	\$150.00	\$150.00	Messplay Gary C&Arianna C
325 121 17 00	1.00	SFD	1.00	1.00	1.00	\$150.00	\$150.00	Case Ronald&Tracy Family Trust 04-22-03
325 121 18 00	1.00	SFD	1.00	1.00	1.00	\$150.00	\$150.00	Valentine Danny L&Evangeline Family Trust 11-25-14
325 121 19 00	1.00	SFD	1.00	1.00	1.00	\$150.00	\$150.00	Yee Family Trust 06-20-08
325 121 20 00	1.00	SFD	1.00	1.00	1.00	\$150.00	\$150.00	Vu Quin&Jih Lily
325 121 21 00	0.01	OSP	0.00	0.00	0.00	\$150.00	\$0.00	Stonebridge Estates Master Assn
325 121 22 00	0.01	OSP	0.00	0.00	0.00	\$150.00	\$0.00	Stonebridge Estates Master Assn
325 121 24 00	0.01	OSP	0.00	0.00	0.00	\$150.00	\$0.00	Stonebridge Estates Master Assn
325 121 25 00	0.01	OSP	0.00	0.00	0.00	\$150.00	\$0.00	Stonebridge Estates Master Assn
325 121 26 00	0.01	OSP	0.00	0.00	0.00	\$150.00	\$0.00	Stonebridge Estates Master Assn
325 121 27 00	1.00	SFD	1.00	1.00	1.00	\$150.00	\$150.00	Alami Hassane&Chourouk
325 121 28 00	3.36	OSP	0.00	0.00	0.00	\$150.00	\$0.00	Sycamore Estates L L C
325 130 01 00	1.00	SFD	1.00	1.00	1.00	\$150.00	\$150.00	Lacoursiere Terry P&Daphne Y
325 130 02 00	1.00	SFD	1.00	1.00	1.00	\$150.00	\$150.00	Truong Danh&Yvonne Family Trust 04-10-11
325 130 03 00	1.00	SFD	1.00	1.00	1.00	\$150.00	\$150.00	Velazquez Jose G&Lisa
325 130 04 00	1.00	SFD	1.00	1.00	1.00	\$150.00	\$150.00	Cabling Bonifacio&Mary J
325 130 05 00	1.00	SFD	1.00	1.00	1.00	\$150.00	\$150.00	Shi Family Trust 08-03-17
325 130 06 00	1.00	SFD	1.00	1.00	1.00	\$150.00	\$150.00	Chen Nan&Lu Wei
325 130 07 00	1.00	SFD	1.00	1.00	1.00	\$150.00	\$150.00	Ryan Luke P&Hom Xenia B
325 130 08 00	1.00	SFD	1.00	1.00	1.00	\$150.00	\$150.00	Wang Weibin Revocable Trust 11-23-05
325 130 09 00	1.00	SFD	1.00	1.00	1.00	\$150.00	\$150.00	Heung Family Trust 09-14-04
325 130 10 00	1.00	SFD	1.00	1.00	1.00	\$150.00	\$150.00	Chittaphong Lamphong
325 130 11 00	1.00	SFD	1.00	1.00	1.00	\$150.00	\$150.00	Yang Jinghui&Liang Li Revocable Living Trust
325 130 12 00	1.00	SFD	1.00	1.00	1.00	\$150.00	\$150.00	Fermanian Christopher A&Laura E
325 130 13 00	1.00	SFD	1.00	1.00	1.00	\$150.00	\$150.00	Oliver William C Iii&Leslie L
325 130 14 00	1.00	SFD	1.00	1.00	1.00	\$150.00	\$150.00	Samurai Trust 12-27-05
325 130 15 00	1.00	SFD	1.00	1.00	1.00	\$150.00	\$150.00	Kuykendall John B
325 130 16 00	1.00	SFD	1.00	1.00	1.00	\$150.00	\$150.00	Hackim Family Trust 09-27-01
325 130 17 00	1.00	SFD	1.00	1.00	1.00	\$150.00	\$150.00	Brand Adam&Carina
325 130 18 00	1.00	SFD	1.00	1.00	1.00	\$150.00	\$150.00	Luu Son Ngoc&Nguyen Victoria H
325 130 19 00	1.00	SFD	1.00	1.00	1.00	\$150.00	\$150.00	Quintanilla Gabriel
325 130 20 00	1.00	SFD	1.00	1.00	1.00	\$150.00	\$150.00	Patel Dipak R
325 130 21 00	1.00	SFD	1.00	1.00	1.00	\$150.00	\$150.00	Trieu Thuan&Nguyen Kimberly
325 130 22 00	1.00	SFD	1.00	1.00	1.00	\$150.00	\$150.00	Lsf9 Master Participation Trust
325 130 23 00	1.00	SFD	1.00	1.00	1.00	\$150.00	\$150.00	Carreon Alfredo B&Bella B
325 130 24 00	1.00	SFD	1.00	1.00	1.00	\$150.00	\$150.00	Parker Larry&Jennifer D
325 130 25 00	1.00	SFD	1.00	1.00	1.00	\$150.00	\$150.00	Asaro Family Trust 06-03-13
325 130 26 00	1.00	SFD	1.00	1.00	1.00	\$150.00	\$150.00	Langenberg Bret J&Alexandra P
325 130 27 00	1.00	SFD	1.00	1.00	1.00	\$150.00	\$150.00	Solomon Darren&Fricker Deborah
325 130 28 00	1.00	SFD	1.00	1.00	1.00	\$150.00	\$150.00	Huynh Dung V&Trang T
325 130 29 00	1.00	SFD	1.00	1.00	1.00	\$150.00	\$150.00	Tsai Juitien&Minshen
325 130 30 00	1.00	SFD	1.00	1.00	1.00	\$150.00	\$150.00	Lucero Frutos Family Trust A 03-12-14
325 130 31 00	1.00	SFD	1.00	1.00	1.00	\$150.00	\$150.00	Jagannath Gopinath&Vijaya
325 130 32 00	1.00	SFD	1.00	1.00	1.00	\$150.00	\$150.00	Devries Family Trust 08-18-98
325 130 33 00	1.00	SFD	1.00	1.00	1.00	\$150.00	\$150.00	Yousofy Shoeyb&Rubyna I

**EXHIBIT C - Assessment Roll (Fiscal Year 2020)**  
**Rancho Encantada/Stonebridge Estates Maintenance Assessment District**

Parcel Number	Acres/ Units <sup>(1)</sup>	Land Use <sup>(2)</sup>	Assessment Factors		Total EBU's	Unit Cost (\$/EBU)	FY 2020 <sup>(4)</sup> Assessment	Owner Name
			Land Use <sup>(2)</sup>	Benefit <sup>(3)</sup>				
325 130 34 00	1.00	SFD	1.00	1.00	1.00	\$150.00	\$150.00	Cristobal Lamberto C&Nenita L
325 130 35 00	1.00	SFD	1.00	1.00	1.00	\$150.00	\$150.00	Patel Shimman A&Neesa B
325 130 36 00	1.00	SFD	1.00	1.00	1.00	\$150.00	\$150.00	Marsano Family Trust 12-18-14
325 130 37 00	1.00	SFD	1.00	1.00	1.00	\$150.00	\$150.00	Shelton Lonnie J Jr
325 130 38 00	1.00	SFD	1.00	1.00	1.00	\$150.00	\$150.00	Mullaguru Naidu Srinivasulu&Lakshmi Revocable Living Tr
325 130 39 00	1.00	SFD	1.00	1.00	1.00	\$150.00	\$150.00	Raagas Rene J&Kirstie C
325 130 40 00	1.00	SFD	1.00	1.00	1.00	\$150.00	\$150.00	Fermanian Timothy&Katie
325 130 41 00	1.00	SFD	1.00	1.00	1.00	\$150.00	\$150.00	Tran Man Chi
325 130 42 00	1.00	SFD	1.00	1.00	1.00	\$150.00	\$150.00	Spilotro Michael&Jodi M
325 130 43 00	1.00	SFD	1.00	1.00	1.00	\$150.00	\$150.00	Nouvong P J Separate Property Trust 02-10-17 Et Al
325 130 44 00	1.00	SFD	1.00	1.00	1.00	\$150.00	\$150.00	Tseng Jerry T&Tsai Rosie
325 130 45 00	1.00	SFD	1.00	1.00	1.00	\$150.00	\$150.00	Wei Henry Ming-Chung
325 130 46 00	1.00	SFD	1.00	1.00	1.00	\$150.00	\$150.00	Chao-Zhou Family Trust 08-20-13
325 130 47 00	1.00	SFD	1.00	1.00	1.00	\$150.00	\$150.00	Morris Stacy L
325 130 48 00	1.00	SFD	1.00	1.00	1.00	\$150.00	\$150.00	Pasumarthi Kesava&Surekha
325 130 49 00	1.00	SFD	1.00	1.00	1.00	\$150.00	\$150.00	Barrie Elizabeth
325 130 50 00	1.00	SFD	1.00	1.00	1.00	\$150.00	\$150.00	Kunz Ronald J&Nancy G
325 130 51 00	1.00	SFD	1.00	1.00	1.00	\$150.00	\$150.00	Valdez Family Trust 07-10-18
325 130 52 00	1.00	SFD	1.00	1.00	1.00	\$150.00	\$150.00	Noble Richard T Jr&Barbara A
325 130 53 00	1.00	SFD	1.00	1.00	1.00	\$150.00	\$150.00	Thotakura Ramakrishna C&Yalavarthi Divya
325 130 54 00	1.00	SFD	1.00	1.00	1.00	\$150.00	\$150.00	Pinto Sergio&Lodhi Saima
325 130 55 00	1.00	SFD	1.00	1.00	1.00	\$150.00	\$150.00	Ballesteros Douglas A&Ashley M
325 130 56 00	1.00	SFD	1.00	1.00	1.00	\$150.00	\$150.00	Phan Dave V&Ann L
325 130 57 00	1.00	SFD	1.00	1.00	1.00	\$150.00	\$150.00	Khan Safi U&Nadya
325 130 58 00	1.00	SFD	1.00	1.00	1.00	\$150.00	\$150.00	Mansoor Rashid&Ranjbar Farzaneh
325 130 59 00	1.00	SFD	1.00	1.00	1.00	\$150.00	\$150.00	Wyld Jeremy A&Melara Claudia L
325 130 60 00	1.00	SFD	1.00	1.00	1.00	\$150.00	\$150.00	Onyegbule Herbert&Patience 2007 Trust 05-15-08
325 130 61 00	1.00	SFD	1.00	1.00	1.00	\$150.00	\$150.00	Pipponniemi Ismo A&Nousiainen Iris L
325 130 62 00	0.74	OSP	0.00	0.00	0.00	\$150.00	\$0.00	Stonebridge Estates Master Assn
325 130 63 00	0.01	OSP	0.00	0.00	0.00	\$150.00	\$0.00	Stonebridge Estates Master Assn
325 130 64 00	0.01	OSP	0.00	0.00	0.00	\$150.00	\$0.00	Stonebridge Estates Master Assn
325 130 65 00	6.54	OSP	0.00	0.00	0.00	\$150.00	\$0.00	Stonebridge Estates Master Assn
325 130 66 00	0.01	OSP	0.00	0.00	0.00	\$150.00	\$0.00	Stonebridge Estates Master Assn
325 130 67 00	0.01	OSP	0.00	0.00	0.00	\$150.00	\$0.00	Stonebridge Estate Master Assn
325 130 68 00	0.01	OSP	0.00	0.00	0.00	\$150.00	\$0.00	Stonebridge Estates Master Association
325 130 69 00	0.01	OSP	0.00	0.00	0.00	\$150.00	\$0.00	Stonebridge Estates Master Assn
325 130 70 00	0.01	OSP	0.00	0.00	0.00	\$150.00	\$0.00	Stonebridge Estates Master Assn
325 130 71 00	0.01	OSP	0.00	0.00	0.00	\$150.00	\$0.00	Stonebridge Estates Master Assn
325 130 72 00	0.01	OSP	0.00	0.00	0.00	\$150.00	\$0.00	Stonebridge Estates Master Assn
325 131 01 00	1.00	SFD	1.00	1.00	1.00	\$150.00	\$150.00	Olive Jack P&Cheryl J
325 131 02 00	1.00	SFD	1.00	1.00	1.00	\$150.00	\$150.00	Nayak-Kapoor Family Trust 11-05-15
325 131 03 00	1.00	SFD	1.00	1.00	1.00	\$150.00	\$150.00	Yates Timothy J&Amy K
325 131 04 00	1.00	SFD	1.00	1.00	1.00	\$150.00	\$150.00	Jefferson Tony L Jr
325 131 05 00	1.00	SFD	1.00	1.00	1.00	\$150.00	\$150.00	Steiner Marc P&Duncan Tamara A
325 131 06 00	1.00	SFD	1.00	1.00	1.00	\$150.00	\$150.00	Henry Andrew&Jacqueline
325 131 07 00	1.00	SFD	1.00	1.00	1.00	\$150.00	\$150.00	Vandermolen Darren L&Sheri L
325 131 08 00	1.00	SFD	1.00	1.00	1.00	\$150.00	\$150.00	Park Francis&Kim E
325 131 16 00	1.00	SFD	1.00	1.00	1.00	\$150.00	\$150.00	Morris Shawn D
325 131 17 00	1.00	SFD	1.00	1.00	1.00	\$150.00	\$150.00	Bailey Bradley&Susan Family Trust 03-11-98
325 131 18 00	1.00	SFD	1.00	1.00	1.00	\$150.00	\$150.00	Kaiser Family Trust 08-03-07

**EXHIBIT C - Assessment Roll (Fiscal Year 2020)**  
**Rancho Encantada/Stonebridge Estates Maintenance Assessment District**

Parcel Number	Acres/ Units <sup>(1)</sup>	Land Use <sup>(2)</sup>	Assessment Factors		Total EBU's	Unit Cost (\$/EBU)	FY 2020 <sup>(4)</sup> Assessment	Owner Name
			Land Use <sup>(2)</sup>	Benefit <sup>(3)</sup>				
325 131 19 00	1.00	SFD	1.00	1.00	1.00	\$150.00	\$150.00	Haupt Kevin&Christy Family Trust 10-24-04
325 131 20 00	1.00	SFD	1.00	1.00	1.00	\$150.00	\$150.00	Bennett Duane E&Lena M
325 131 21 00	1.00	SFD	1.00	1.00	1.00	\$150.00	\$150.00	Antun Family Trust 03-01-18
325 131 22 00	1.00	SFD	1.00	1.00	1.00	\$150.00	\$150.00	Rosenoff Eric B&Kristin D
325 131 23 00	1.00	SFD	1.00	1.00	1.00	\$150.00	\$150.00	Feld David W&Kathryn A
325 131 24 00	1.00	SFD	1.00	1.00	1.00	\$150.00	\$150.00	Johnson Scott E&Kerry L
325 131 25 00	1.00	SFD	1.00	1.00	1.00	\$150.00	\$150.00	Grondalski Michael C&Dayleen Y
325 131 26 00	1.00	SFD	1.00	1.00	1.00	\$150.00	\$150.00	Akhmejanov Anuar&Podkolzina Laura
325 131 27 00	1.00	SFD	1.00	1.00	1.00	\$150.00	\$150.00	Kawano Family Trust 05-07-09
325 131 28 00	0.01	OSP	0.00	0.00	0.00	\$150.00	\$0.00	Stonebridge Estates Master Assn
325 131 29 00	0.01	OSP	0.00	0.00	0.00	\$150.00	\$0.00	Sycamore Estates L L C
325 131 30 00	0.01	OSP	0.00	0.00	0.00	\$150.00	\$0.00	Stonebridge Estates Master Assn
325 131 31 00	0.01	OSP	0.00	0.00	0.00	\$150.00	\$0.00	Stonebridge Estates Master Assn
325 131 33 00	0.01	OSP	0.00	0.00	0.00	\$150.00	\$0.00	Stonebridge Estates Master Assn
325 131 34 00	1.00	SFD	1.00	1.00	1.00	\$150.00	\$150.00	Purcell Christopher&Rachel Family Trust 03-03-08
325 131 35 00	1.00	SFD	1.00	1.00	1.00	\$150.00	\$150.00	Baldwin Curt M&Cheryl A
325 131 36 00	1.00	SFD	1.00	1.00	1.00	\$150.00	\$150.00	Prabaker Trust 12-18-97
325 131 37 00	1.00	SFD	1.00	1.00	1.00	\$150.00	\$150.00	Guglielmetti Family Trust 11-26-01
325 131 38 00	1.00	SFD	1.00	1.00	1.00	\$150.00	\$150.00	Terkeurst Edward J
325 131 39 00	1.00	SFD	1.00	1.00	1.00	\$150.00	\$150.00	Marshall Janet L&Smith Paul L
325 131 40 00	1.00	SFD	1.00	1.00	1.00	\$150.00	\$150.00	R&A Irrevocable Trust 12-19-12
325 131 41 00	7.61	OSP	0.00	0.00	0.00	\$150.00	\$0.00	Sycamore Estates L L C
325 140 01 00	1.00	SFD	1.00	1.00	1.00	\$150.00	\$150.00	Rahmani Family Trust 01-18-18
325 140 02 00	1.00	SFD	1.00	1.00	1.00	\$150.00	\$150.00	Szabo Christopher S&Kaczanowski Tania
325 140 03 00	1.00	SFD	1.00	1.00	1.00	\$150.00	\$150.00	Tarmey Nicosia Family Trust 03-17-07
325 140 04 00	1.00	SFD	1.00	1.00	1.00	\$150.00	\$150.00	Kappel David
325 140 05 00	1.00	SFD	1.00	1.00	1.00	\$150.00	\$150.00	Haggenmiller Todd&Karen
325 140 06 00	1.00	SFD	1.00	1.00	1.00	\$150.00	\$150.00	Schulte Family Trust 12-19-97
325 140 07 00	1.00	SFD	1.00	1.00	1.00	\$150.00	\$150.00	Harris James M&Nancy J
325 140 08 00	1.00	SFD	1.00	1.00	1.00	\$150.00	\$150.00	Geary Jon M&Siu Ming Jasmine Living Trust 04-11-08
325 140 09 00	1.00	SFD	1.00	1.00	1.00	\$150.00	\$150.00	Hawkey Charles&Susan J
325 140 10 00	1.00	SFD	1.00	1.00	1.00	\$150.00	\$150.00	Mchugh Brian&Rosemary Revocable Trust 03-15-18
325 140 11 00	1.00	SFD	1.00	1.00	1.00	\$150.00	\$150.00	Eric&Aimee Family 2010 Trust
325 140 12 00	1.00	SFD	1.00	1.00	1.00	\$150.00	\$150.00	Kurose Brian D&Cynthia E
325 140 13 00	1.00	SFD	1.00	1.00	1.00	\$150.00	\$150.00	Elliott Alan&Carol Living Trust 03-17-03
325 140 14 00	1.00	SFD	1.00	1.00	1.00	\$150.00	\$150.00	Cutts Shano&Aimee
325 140 15 00	1.00	SFD	1.00	1.00	1.00	\$150.00	\$150.00	Hungerford Lars D&Amanda M
325 140 16 00	1.00	SFD	1.00	1.00	1.00	\$150.00	\$150.00	Yi John
325 140 17 00	1.00	SFD	1.00	1.00	1.00	\$150.00	\$150.00	Stallings Eric A&Muriel
325 140 18 00	1.00	SFD	1.00	1.00	1.00	\$150.00	\$150.00	Chavez Juan&Julie
325 140 19 00	1.00	SFD	1.00	1.00	1.00	\$150.00	\$150.00	Duffy Family Trust 05-30-13
325 140 20 00	1.00	SFD	1.00	1.00	1.00	\$150.00	\$150.00	Ward Charles F&Carolyn Joint Trust 06-12-06
325 140 21 00	1.00	SFD	1.00	1.00	1.00	\$150.00	\$150.00	Brackman David&Anna Family Trust 03-27-07
325 140 22 00	1.00	SFD	1.00	1.00	1.00	\$150.00	\$150.00	Bley Shannon
325 140 23 00	1.00	SFD	1.00	1.00	1.00	\$150.00	\$150.00	Forrest Melissa A&Palmer Moseitta E
325 140 24 00	1.00	SFD	1.00	1.00	1.00	\$150.00	\$150.00	Eagle Katrina J
325 140 25 00	1.00	SFD	1.00	1.00	1.00	\$150.00	\$150.00	Bell Living Trust 08-19-02
325 140 26 00	1.00	SFD	1.00	1.00	1.00	\$150.00	\$150.00	Alonso Family Trust 12-17-05
325 140 27 00	1.00	SFD	1.00	1.00	1.00	\$150.00	\$150.00	Behan Dominic&Gaynor
325 140 28 00	1.00	SFD	1.00	1.00	1.00	\$150.00	\$150.00	Simmons Arlis J Trust 01-25-08



**EXHIBIT C - Assessment Roll (Fiscal Year 2020)**  
**Rancho Encantada/Stonebridge Estates Maintenance Assessment District**

Parcel Number	Acres/ Units <sup>(1)</sup>	Land Use <sup>(2)</sup>	Assessment Factors		Total EBU's	Unit Cost (\$/EBU)	FY 2020 <sup>(4)</sup> Assessment	Owner Name
			Land Use <sup>(2)</sup>	Benefit <sup>(3)</sup>				
325 140 29 00	1.00	SFD	1.00	1.00	1.00	\$150.00	\$150.00	Mcclure-Cook Todd&Cook Doris J
325 140 30 00	1.00	SFD	1.00	1.00	1.00	\$150.00	\$150.00	Jacobs Family Trust 05-29-14
325 140 31 00	1.00	SFD	1.00	1.00	1.00	\$150.00	\$150.00	Chu Living Trust 02-18-00
325 140 32 00	1.00	SFD	1.00	1.00	1.00	\$150.00	\$150.00	Civerolo Michael&Jacqueline
325 140 33 00	1.00	SFD	1.00	1.00	1.00	\$150.00	\$150.00	Subramani Dinesh&Shinde Gitanjali
325 140 34 00	1.00	SFD	1.00	1.00	1.00	\$150.00	\$150.00	Murray Jane A Revocable Trust 11-08-18
325 140 35 00	1.00	SFD	1.00	1.00	1.00	\$150.00	\$150.00	Staples Michael J&Cynthia L
325 140 36 00	1.00	SFD	1.00	1.00	1.00	\$150.00	\$150.00	Fountain Trust 12-07-06
325 140 37 00	1.00	SFD	1.00	1.00	1.00	\$150.00	\$150.00	Lu Lin&Jin Kai
325 140 38 00	1.00	SFD	1.00	1.00	1.00	\$150.00	\$150.00	Moyer Trust 11-26-14
325 140 39 00	1.00	SFD	1.00	1.00	1.00	\$150.00	\$150.00	Kare Family Trust 12-19-08
325 140 40 00	1.00	SFD	1.00	1.00	1.00	\$150.00	\$150.00	Desilva Family 2005 Trust 07-27-05
325 140 41 00	1.00	SFD	1.00	1.00	1.00	\$150.00	\$150.00	Limcolloc Jerald&Linda Family Trust 06-14-17
325 140 42 00	1.00	SFD	1.00	1.00	1.00	\$150.00	\$150.00	Duke Eric V&Le Loan N
325 140 43 00	1.00	SFD	1.00	1.00	1.00	\$150.00	\$150.00	Patrico Joseph N&Lisa
325 140 44 00	1.00	SFD	1.00	1.00	1.00	\$150.00	\$150.00	Wood Amy M
325 140 45 00	1.00	SFD	1.00	1.00	1.00	\$150.00	\$150.00	Kwan Paul C&Melissa A
325 140 46 00	1.00	SFD	1.00	1.00	1.00	\$150.00	\$150.00	Price Jennifer W Trust 11-04-11
325 140 47 00	1.00	SFD	1.00	1.00	1.00	\$150.00	\$150.00	Kaypour Babak&Behnaz
325 140 48 00	1.00	SFD	1.00	1.00	1.00	\$150.00	\$150.00	Nockerts Michael R
325 140 49 00	2.05	OSP	0.00	0.00	0.00	\$150.00	\$0.00	Stonebridge Estates Master Assn
325 140 50 00	7.85	OSP	0.00	0.00	0.00	\$150.00	\$0.00	Stonebridge Estates Master Assn
325 140 51 00	0.01	OSP	0.00	0.00	0.00	\$150.00	\$0.00	Stonebridge Estates Master Association
325 140 52 00	0.01	OSP	0.00	0.00	0.00	\$150.00	\$0.00	Stonebridge Estates Master Assn
325 140 53 00	0.01	OSP	0.00	0.00	0.00	\$150.00	\$0.00	Stonebridge Estates Master Assn
325 140 54 00	0.01	OSP	0.00	0.00	0.00	\$150.00	\$0.00	Stonebridge Estates Master Assn
325 150 01 00	1.00	SFD	1.00	1.00	1.00	\$150.00	\$150.00	Tereschuck Peter&Jamie Family 2005 Trust
325 150 02 00	1.00	SFD	1.00	1.00	1.00	\$150.00	\$150.00	Merritt Thomas A&Pamela K Family Trust 05-14-16
325 150 03 00	1.00	SFD	1.00	1.00	1.00	\$150.00	\$150.00	Cardinale Family Trust 05-27-15
325 150 04 00	1.00	SFD	1.00	1.00	1.00	\$150.00	\$150.00	Qian Ling Mei
325 150 05 00	1.00	SFD	1.00	1.00	1.00	\$150.00	\$150.00	Adel Shaun S&Gina
325 150 06 00	1.00	SFD	1.00	1.00	1.00	\$150.00	\$150.00	Calicasa L L C
325 150 07 00	1.00	SFD	1.00	1.00	1.00	\$150.00	\$150.00	Liu Lipu
325 150 08 00	1.00	SFD	1.00	1.00	1.00	\$150.00	\$150.00	Zhou&Yu Family Trust 12-11-15
325 150 09 00	1.00	SFD	1.00	1.00	1.00	\$150.00	\$150.00	Liu Xifu&Gui Yanyun
325 150 10 00	1.00	SFD	1.00	1.00	1.00	\$150.00	\$150.00	Paige William W&Cathleen E Trust 04-03-14
325 150 11 00	1.00	SFD	1.00	1.00	1.00	\$150.00	\$150.00	Patel Family Trust 08-29-16
325 150 12 00	1.00	SFD	1.00	1.00	1.00	\$150.00	\$150.00	Haslerig Alfred G Jr&Jacqueline R
325 150 13 00	1.00	SFD	1.00	1.00	1.00	\$150.00	\$150.00	G&G Big Canyon Group Llc
325 150 14 00	1.00	SFD	1.00	1.00	1.00	\$150.00	\$150.00	Zhang Xiaonan&Wu Xiaolan Family Trust 09-21-90
325 150 15 00	1.00	SFD	1.00	1.00	1.00	\$150.00	\$150.00	Singh Bhupinder&Mann Bhupinder K
325 150 16 00	1.00	SFD	1.00	1.00	1.00	\$150.00	\$150.00	Andranovich Family Trust 06-15-16
325 150 17 00	1.00	SFD	1.00	1.00	1.00	\$150.00	\$150.00	Nayab Family Trust 06-01-07
325 150 18 00	1.00	SFD	1.00	1.00	1.00	\$150.00	\$150.00	Green Family Trust 01-03-18
325 150 19 00	1.00	SFD	1.00	1.00	1.00	\$150.00	\$150.00	Han Fang&Liu Fang
325 150 20 00	1.00	SFD	1.00	1.00	1.00	\$150.00	\$150.00	Yamamoto Jonathan&Anna 2016 Trust 01-12-16
325 150 21 00	1.00	SFD	1.00	1.00	1.00	\$150.00	\$150.00	Mane Investments L L C
325 150 22 00	1.00	SFD	1.00	1.00	1.00	\$150.00	\$150.00	Gould Dale&Mullins Vicki Revocable Trust 04-11-05
325 150 23 00	1.00	SFD	1.00	1.00	1.00	\$150.00	\$150.00	Wishchuk Bethany P&Chad T Family Trust 07-26-05
325 150 24 00	1.00	SFD	1.00	1.00	1.00	\$150.00	\$150.00	Lau H S&Amy H Family Revocable Trust 06-23-16

**EXHIBIT C - Assessment Roll (Fiscal Year 2020)**  
**Rancho Encantada/Stonebridge Estates Maintenance Assessment District**

Parcel Number	Acres/ Units <sup>(1)</sup>	Land Use <sup>(2)</sup>	Assessment Factors		Total EBU's	Unit Cost (\$/EBU)	FY 2020 <sup>(4)</sup> Assessment	Owner Name
			Land Use <sup>(2)</sup>	Benefit <sup>(3)</sup>				
325 150 25 00	1.00	SFD	1.00	1.00	1.00	\$150.00	\$150.00	Chen Family Trust 10-27-14
325 150 26 00	1.00	SFD	1.00	1.00	1.00	\$150.00	\$150.00	Lorenzo Family Trust 12-06-02
325 150 27 00	1.00	SFD	1.00	1.00	1.00	\$150.00	\$150.00	Hefler Jonathan
325 150 28 00	1.00	SFD	1.00	1.00	1.00	\$150.00	\$150.00	Reeder-Garcia Family Trust 12-14-12
325 150 29 00	1.00	SFD	1.00	1.00	1.00	\$150.00	\$150.00	Davidson Family Trust 11-28-01
325 150 30 00	1.00	SFD	1.00	1.00	1.00	\$150.00	\$150.00	Polselli Anthony&Adria 2016 Family Trust 12-28-16
325 150 31 00	1.00	SFD	1.00	1.00	1.00	\$150.00	\$150.00	Chen Kung H&Mei Hui Revocable Trust 03-29-18
325 150 32 00	1.00	SFD	1.00	1.00	1.00	\$150.00	\$150.00	Grossman Randy M
325 150 33 00	1.00	SFD	1.00	1.00	1.00	\$150.00	\$150.00	Sutherland Robert W Jr&Castaneda Tania L
325 150 34 00	1.00	SFD	1.00	1.00	1.00	\$150.00	\$150.00	Schmidt Carlos A Jr&Sunshine M
325 150 35 00	1.00	SFD	1.00	1.00	1.00	\$150.00	\$150.00	Ashraf Asad&Akram Huma
325 150 36 00	1.00	SFD	1.00	1.00	1.00	\$150.00	\$150.00	Richard John D&Jessica P
325 150 37 00	1.00	SFD	1.00	1.00	1.00	\$150.00	\$150.00	Gray Justin E&Maria K
325 150 38 00	1.00	SFD	1.00	1.00	1.00	\$150.00	\$150.00	Jackson Mary A Tr
325 150 39 00	1.00	SFD	1.00	1.00	1.00	\$150.00	\$150.00	Ko Peter&Caldito Luella M
325 150 40 00	1.00	SFD	1.00	1.00	1.00	\$150.00	\$150.00	King Justin B&Boydking Ayana J
325 150 41 00	1.00	SFD	1.00	1.00	1.00	\$150.00	\$150.00	Becker Michael M&Becherer Kathleen A
325 150 42 00	1.00	SFD	1.00	1.00	1.00	\$150.00	\$150.00	Carhart Scott T 2002 Trust 12-12-02
325 150 43 00	1.00	SFD	1.00	1.00	1.00	\$150.00	\$150.00	Javadian&Zafarani Living Trust 06-12-13
325 150 44 00	1.00	SFD	1.00	1.00	1.00	\$150.00	\$150.00	Harris Martyn&Samantha J
325 150 45 00	1.00	SFD	1.00	1.00	1.00	\$150.00	\$150.00	Fulcher Joe L&Ann L
325 150 46 00	1.00	SFD	1.00	1.00	1.00	\$150.00	\$150.00	Hartline Brian K&Williams Roland H
325 150 47 00	1.00	SFD	1.00	1.00	1.00	\$150.00	\$150.00	Herbert Mark R&Kathryn M
325 150 48 00	1.00	SFD	1.00	1.00	1.00	\$150.00	\$150.00	Bhushan-Subbaramoo Trust 02-11-08
325 150 49 00	1.00	SFD	1.00	1.00	1.00	\$150.00	\$150.00	Mountain Richard P&Julie C Trs
325 150 50 00	1.00	SFD	1.00	1.00	1.00	\$150.00	\$150.00	Toomu Srinivas&Kalyani
325 150 51 00	1.00	SFD	1.00	1.00	1.00	\$150.00	\$150.00	Wang Jiadong&Li Chenzhi
325 150 52 00	1.00	SFD	1.00	1.00	1.00	\$150.00	\$150.00	Chan Starkey Family Trust 04-19-17
325 150 53 00	1.00	SFD	1.00	1.00	1.00	\$150.00	\$150.00	Garcia Family Trust 07-20-04
325 150 54 00	1.00	SFD	1.00	1.00	1.00	\$150.00	\$150.00	Podkozurnikov Alex&Marina Revocable Living Trust 08-0
325 150 55 00	1.00	SFD	1.00	1.00	1.00	\$150.00	\$150.00	Alware Shahnavaz D&Nusrat
325 150 56 00	1.00	SFD	1.00	1.00	1.00	\$150.00	\$150.00	Bagnas Benjamin E&Tina R
325 150 57 00	1.00	SFD	1.00	1.00	1.00	\$150.00	\$150.00	Manalansan Family Trust 07-25-16
325 150 58 00	1.00	SFD	1.00	1.00	1.00	\$150.00	\$150.00	Nash Duane D&Jazibe E
325 150 59 00	1.00	SFD	1.00	1.00	1.00	\$150.00	\$150.00	Dubowski Kenneth E&Cathy L
325 150 60 00	1.00	SFD	1.00	1.00	1.00	\$150.00	\$150.00	Thum Barbara D Trust 10-09-91
325 150 61 00	1.00	SFD	1.00	1.00	1.00	\$150.00	\$150.00	Mickelson Christian
325 150 62 00	1.00	SFD	1.00	1.00	1.00	\$150.00	\$150.00	Guevarra Jesuel
325 150 63 00	1.00	SFD	1.00	1.00	1.00	\$150.00	\$150.00	Fehl Family Trust 02-22-17
325 150 64 00	1.00	SFD	1.00	1.00	1.00	\$150.00	\$150.00	Doucete Robin&Douglas P Family Trust 11-02-18
325 150 65 00	1.00	SFD	1.00	1.00	1.00	\$150.00	\$150.00	Zhang Zhongxuan&Tu Xiao
325 150 66 00	1.00	SFD	1.00	1.00	1.00	\$150.00	\$150.00	Gao Family Trust 08-15-07
325 150 67 00	1.00	SFD	1.00	1.00	1.00	\$150.00	\$150.00	Chang Yan&Annie
325 150 68 00	1.00	SFD	1.00	1.00	1.00	\$150.00	\$150.00	Roeder-Ermis Family Trust 07-09-18
325 150 69 00	1.00	SFD	1.00	1.00	1.00	\$150.00	\$150.00	Niu Helen Hairong Trust 03-12-08
325 150 70 00	1.00	SFD	1.00	1.00	1.00	\$150.00	\$150.00	Mceneaney Kenneth D&Minerva E
325 150 71 00	1.00	SFD	1.00	1.00	1.00	\$150.00	\$150.00	Mickelsen Christian
325 150 72 00	9.66	OSP	0.00	0.00	0.00	\$150.00	\$0.00	Sycamore Estates L L C
325 150 73 00	0.01	OSP	0.00	0.00	0.00	\$150.00	\$0.00	Stonebridge Estates Master Assn
325 150 74 00	0.01	OSP	0.00	0.00	0.00	\$150.00	\$0.00	Stonebridge Estates Master Assn

**EXHIBIT C - Assessment Roll (Fiscal Year 2020)**  
**Rancho Encantada/Stonebridge Estates Maintenance Assessment District**

Parcel Number	Acres/ Units <sup>(1)</sup>	Land Use <sup>(2)</sup>	Assessment Factors		Total EBU's	Unit Cost (\$/EBU)	FY 2020 <sup>(4)</sup> Assessment	Owner Name
			Land Use <sup>(2)</sup>	Benefit <sup>(3)</sup>				
325 150 75 00	0.01	OSP	0.00	0.00	0.00	\$150.00	\$0.00	Stonebridge Estates Master Assn
325 150 76 00	0.01	OSP	0.00	0.00	0.00	\$150.00	\$0.00	Stonebridge Estates Master Assn
325 150 77 00	0.01	OSP	0.00	0.00	0.00	\$150.00	\$0.00	Stonebridge Estates Master Assn
325 150 78 00	0.01	OSP	0.00	0.00	0.00	\$150.00	\$0.00	Stonebridge Estates Master Assn
325 150 79 00	0.01	OSP	0.00	0.00	0.00	\$150.00	\$0.00	Toll Ca Xix L P
325 150 80 00	0.01	OSP	0.00	0.00	0.00	\$150.00	\$0.00	Stonebridge Estates Master Assn
325 150 81 00	0.01	OSP	0.00	0.00	0.00	\$150.00	\$0.00	Stonebridge Estates Master Assn
325 160 01 00	1.00	SFD	1.00	1.00	1.00	\$150.00	\$150.00	Livingston John&Jennifer Revocable Trust 11-05-09
325 160 02 00	1.00	SFD	1.00	1.00	1.00	\$150.00	\$150.00	Li Xueqi
325 160 03 00	1.00	SFD	1.00	1.00	1.00	\$150.00	\$150.00	Maalouf Joseph
325 160 04 00	1.00	SFD	1.00	1.00	1.00	\$150.00	\$150.00	Zekry Hazem
325 160 05 00	1.00	SFD	1.00	1.00	1.00	\$150.00	\$150.00	Fang Family Trust 10-30-02
325 160 06 00	1.00	SFD	1.00	1.00	1.00	\$150.00	\$150.00	Hasan Rafeed A&Haba Rena
325 160 07 00	1.00	SFD	1.00	1.00	1.00	\$150.00	\$150.00	Thompson Eugene&Kellie Living Trust 12-21-06 Et Al
325 160 08 00	1.00	SFD	1.00	1.00	1.00	\$150.00	\$150.00	Nagaraj Family Trust 04-12-01
325 160 16 00	1.00	SFD	1.00	1.00	1.00	\$150.00	\$150.00	Rosenberger William S&Debby A
325 160 17 00	1.00	SFD	1.00	1.00	1.00	\$150.00	\$150.00	Jin Ning&Ding Lan
325 160 18 00	1.00	SFD	1.00	1.00	1.00	\$150.00	\$150.00	Foster Christine
325 160 19 00	1.00	SFD	1.00	1.00	1.00	\$150.00	\$150.00	Dewall Eric G&Kimberly N
325 160 20 00	1.00	SFD	1.00	1.00	1.00	\$150.00	\$150.00	Heald-Hubbell Family Trust 10-28-05
325 160 21 00	1.00	SFD	1.00	1.00	1.00	\$150.00	\$150.00	Gutman Ron&Ilanit
325 160 22 00	1.00	SFD	1.00	1.00	1.00	\$150.00	\$150.00	Kneeshaw Richard&Lenora Trust 06-06-02 Et Al
325 160 23 00	1.00	SFD	1.00	1.00	1.00	\$150.00	\$150.00	Semic Matthew J&Cassandra M
325 160 24 00	1.00	SFD	1.00	1.00	1.00	\$150.00	\$150.00	Pankotai Ferenc&Maureen
325 160 25 00	1.00	SFD	1.00	1.00	1.00	\$150.00	\$150.00	Hellbusch Daniel B&Erin N
325 160 26 00	1.00	SFD	1.00	1.00	1.00	\$150.00	\$150.00	Wang Cheng Se&Cheryl M
325 160 27 00	1.00	SFD	1.00	1.00	1.00	\$150.00	\$150.00	Kanekal Sarath
325 160 28 00	1.00	SFD	1.00	1.00	1.00	\$150.00	\$150.00	Nova Redentor P&Noreen
325 160 30 00	0.62	OSP	0.00	0.00	0.00	\$150.00	\$0.00	Stonebridge Estates Master Assn
325 160 31 00	7.06	OSP	0.00	0.00	0.00	\$150.00	\$0.00	Stonebridge Estates Master Assn
325 160 32 00	0.01	OSP	0.00	0.00	0.00	\$150.00	\$0.00	Stonebridge Estates Master Assn
325 160 33 00	0.01	OSP	0.00	0.00	0.00	\$150.00	\$0.00	Stonebridge Estates Master Assn
325 160 34 00	0.01	OSP	0.00	0.00	0.00	\$150.00	\$0.00	Stonebridge Estates Master Assn
325 160 35 00	1.00	SFD	1.00	1.00	1.00	\$150.00	\$150.00	Thompson Survivors Trust 03-10-95
325 160 36 00	1.00	SFD	1.00	1.00	1.00	\$150.00	\$150.00	Trinh Hien&Tien Evelyn Hoang Yen Vu
325 160 37 00	1.00	SFD	1.00	1.00	1.00	\$150.00	\$150.00	Ross Matthew F&Tiew Wan Koon
325 160 38 00	1.00	SFD	1.00	1.00	1.00	\$150.00	\$150.00	Pages Family Trust 06-11-13
325 160 39 00	1.00	SFD	1.00	1.00	1.00	\$150.00	\$150.00	Lai Mega
325 160 46 00	1.00	SFD	1.00	1.00	1.00	\$150.00	\$150.00	Schupp William A&Zou Weidong
325 160 47 00	1.00	SFD	1.00	1.00	1.00	\$150.00	\$150.00	McNair John&Lewis Doris
325 160 48 00	7.98	OSP	0.00	0.00	0.00	\$150.00	\$0.00	Stonebridge Estates Master Assn
325 170 04 00	1.00	SFD	1.00	1.00	1.00	\$150.00	\$150.00	Luong Johnny&Tang Trizzie Ngoc Trinh
325 170 05 00	1.00	SFD	1.00	1.00	1.00	\$150.00	\$150.00	S R S C Trust 08-27-10
325 170 06 00	1.00	SFD	1.00	1.00	1.00	\$150.00	\$150.00	Aggarwal Family Trust 09-26-17
325 170 10 00	1.00	SFD	1.00	1.00	1.00	\$150.00	\$150.00	Bose Christian&Bui Hanh M
325 170 11 00	1.00	SFD	1.00	1.00	1.00	\$150.00	\$150.00	Nady Xavier C&Meredith M Revocable Trust 04-28-11
325 170 12 00	1.00	SFD	1.00	1.00	1.00	\$150.00	\$150.00	Gorosliza Ryan M&Michele A Revocable Trust 07-28-05
325 170 13 00	1.00	SFD	1.00	1.00	1.00	\$150.00	\$150.00	Matha Chandrashekara&Nirmala
325 170 14 00	1.00	SFD	1.00	1.00	1.00	\$150.00	\$150.00	Othman Samir F&Laila L 2003 Revocable Trust 06-27-03
325 170 15 00	1.00	SFD	1.00	1.00	1.00	\$150.00	\$150.00	Niedzielski Family Trust

**EXHIBIT C - Assessment Roll (Fiscal Year 2020)**  
**Rancho Encantada/Stonebridge Estates Maintenance Assessment District**

Parcel Number	Acres/ Units <sup>(1)</sup>	Land Use <sup>(2)</sup>	Assessment Factors		Total EBU's	Unit Cost (\$/EBU)	FY 2020 <sup>(4)</sup> Assessment	Owner Name
			Land Use <sup>(2)</sup>	Benefit <sup>(3)</sup>				
325 170 16 00	1.00	SFD	1.00	1.00	1.00	\$150.00	\$150.00	Wong Alec Y&Tai Yuk Lan
325 170 17 00	1.00	SFD	1.00	1.00	1.00	\$150.00	\$150.00	Hernandez Nefi
325 170 18 00	1.00	SFD	1.00	1.00	1.00	\$150.00	\$150.00	Johnson Calvin V&Angela L
325 170 19 00	1.00	SFD	1.00	1.00	1.00	\$150.00	\$150.00	Beadle James R&Christine
325 170 20 00	1.00	SFD	1.00	1.00	1.00	\$150.00	\$150.00	Weiner Family Trust 10-31-16
325 170 21 00	1.00	SFD	1.00	1.00	1.00	\$150.00	\$150.00	Young Richard K&Leena R D
325 170 22 00	1.00	SFD	1.00	1.00	1.00	\$150.00	\$150.00	Pylori Investments Llc
325 170 23 00	1.00	SFD	1.00	1.00	1.00	\$150.00	\$150.00	Misthos/Valpy-Misthos Family 1998 Trust 07-02-98
325 170 24 00	1.00	SFD	1.00	1.00	1.00	\$150.00	\$150.00	Lossing Steven H&Karen A Family Trust 05-01-15
325 170 25 00	1.00	SFD	1.00	1.00	1.00	\$150.00	\$150.00	Urmacher Carlos D&Mann-Urmacher Linda L
325 170 26 00	1.00	SFD	1.00	1.00	1.00	\$150.00	\$150.00	Tani Taoufik&Zahra
325 170 27 00	1.00	SFD	1.00	1.00	1.00	\$150.00	\$150.00	Kirby William A Iii&Cristina L
325 170 28 00	1.00	SFD	1.00	1.00	1.00	\$150.00	\$150.00	Nackman Mark J Revocable Trust 06-06-14
325 170 29 00	1.00	SFD	1.00	1.00	1.00	\$150.00	\$150.00	Yu Revocable Trust 12-14-09
325 170 30 00	1.00	SFD	1.00	1.00	1.00	\$150.00	\$150.00	Guiles Robert A Irrevocable 2012 Trust
325 170 31 00	1.00	SFD	1.00	1.00	1.00	\$150.00	\$150.00	Navarrete Pedro
325 170 35 00	0.01	OSP	0.00	0.00	0.00	\$150.00	\$0.00	Stonebridge Estates Master Assn
325 170 36 00	1.00	SFD	1.00	1.00	1.00	\$150.00	\$150.00	Reen Sandeep
325 170 37 00	1.00	SFD	1.00	1.00	1.00	\$150.00	\$150.00	Buyuksonmez Faith Separate Property Trust 11-03-17
325 170 38 00	1.00	SFD	1.00	1.00	1.00	\$150.00	\$150.00	Yang Jin&Bui Huynh-Hoa Thi
325 170 39 00	1.00	SFD	1.00	1.00	1.00	\$150.00	\$150.00	Macdowell James&Wang Wei
325 170 40 00	1.00	SFD	1.00	1.00	1.00	\$150.00	\$150.00	Shi Yu&Yu Jingwen
325 170 41 00	1.00	SFD	1.00	1.00	1.00	\$150.00	\$150.00	Williamson James&Adoria
325 170 42 00	1.00	SFD	1.00	1.00	1.00	\$150.00	\$150.00	Bitman Family Trust 02-22-06
325 170 43 00	1.00	SFD	1.00	1.00	1.00	\$150.00	\$150.00	Roper Gregory D Trust 05-20-93
325 170 44 00	21.55	OSP	0.00	0.00	0.00	\$150.00	\$0.00	Sycamore Estates L L C

<b>TOTAL</b>	-	-	-	-	<b>919.98</b>	-	<b>\$137,997</b>	
--------------	---	---	---	---	---------------	---	------------------	--

<sup>(1)</sup> Applicable units (acres or dwelling units) dependent upon Land Use Code  
<sup>(2)</sup> Refer to Assessment Engineer's Report for descriptions of Land Use Code and Land Use Factor.  
<sup>(3)</sup> Refer to Assessment Engineer's Report for applicable Benefit Factor.  
<sup>(4)</sup> FY 2020 is the City's Fiscal Year 2020, which begins July 1, 2019 and ends June 30, 2020.