



# LET'S MOVE EQUITY FORWARD! WORKSHOP



# Environmental Justice Element

*Policy*



# Chollas Creek

Watershed Regional Park Master Plan

*Planning*

Citywide Trails Master Plan



# Project Prioritization

*Analysis*

Parks Needs Index



# Framework for Partnering for Progress

*Process*

Inclusive Public Engagement Guide



**Equity FORWARD**

San Diego

# What is Environmental Justice?

*Equitable distribution of benefits and environmental burdens to promote healthy and livable communities for all San Diegans*



# Environmental Justice & Equity Challenges in San Diego



*Neighborhood resources and conditions that affect childhood development varies greatly by race and neighborhood.*



*People experiencing food insecurity may participate in the Supplemental Nutrition Assistance Program (SNAP) and SNAP usage is particularly prominent in Southeastern, City Heights, and San Ysidro.*



*Latinx and African American population communities have been historically redlined.*



*Life expectancy varies greatly by race and neighborhood. (e.g., 15 – 20 years difference between lower income areas and affluent areas)*

# Chollas Creek Watershed Regional Park Master Plan

*The Chollas Creek Watershed Regional Master Plan is a strategic step to address inequity in resource allocation, environmental justice, and economic opportunity, and to invest in a regional park with unlimited opportunities for recreation, the environment, and community connections.*



**Equity  
FORWARD**

Chollas Creek Watershed  
Regional Park Master Plan



# Challenges Along Chollas Creek Watershed



Chollas Creek is one of San Diego's most **neglected watershed** and was, until recent efforts, a forgotten place.



Decades of development and human activity resulted in **high toxic levels**, which disproportionately affect downstream, disadvantaged residents.



Most neighborhoods along the 30 miles of Creek are designated **disadvantaged, low-income, and high risk**.



There is a **lack of connected public spaces** to promote and support community fitness and socio-emotional well being.

# Chollas Creek Watershed Public Engagement



*Create a mobile engagement cart to meet community members where they are, share about the project and receive input.*



*Host workshops where participants will develop a vision for the watershed, conduct mapping, establish community priorities, and develop design guidelines.*



*Conduct walk audits to gather on-the-ground data about the lived experience of community members.*



*Create a youth watershed ambassador group to help guide the development of the mobile engagement beacon, workshops, and outreach within the community.*

*Phot Credit: Eder Escamilla*



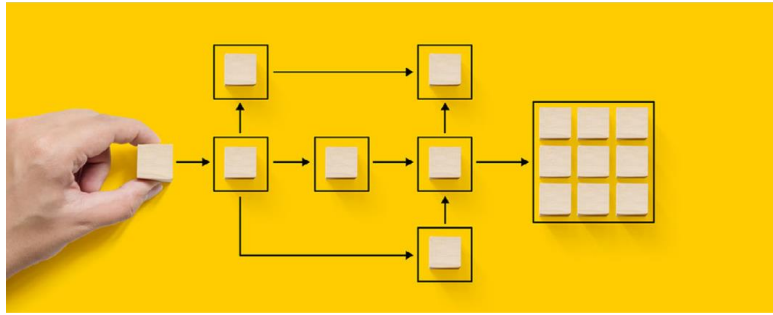
# Partnering for Progress

*Community Garden, Summer Soiree Celebration 2019. Photo credit: Eder B*





# Quick-Build High Impact Projects: Challenges



City currently *lacks a streamlined process* for collaborative projects



Lack of a streamlined process leads to *losing out on funding opportunities* for quick impact projects



*Missed opportunity* to implement innovative quick impact projects



Lack of a streamlined process results in *lack of trust in governance*

# What are Quick-Build High Impact Projects?



*Innovative*



*Collaborative*



*Quick to Implement*



*Infrastructure that the community truly needs/wants*

# Quick-Build High Impact Projects: Opportunities



*Streamlined Process*



*Additional Funding*



*Innovative Public Spaces*



*Tactical Urbanism*



*Community Driven Projects*



*Public Spaces for all age groups*



*Expanded Public Realm*

Project Ideas ▾

Project Idea (1) ▾



Do you have a specific infrastructure project idea or suggestion for your community?\*

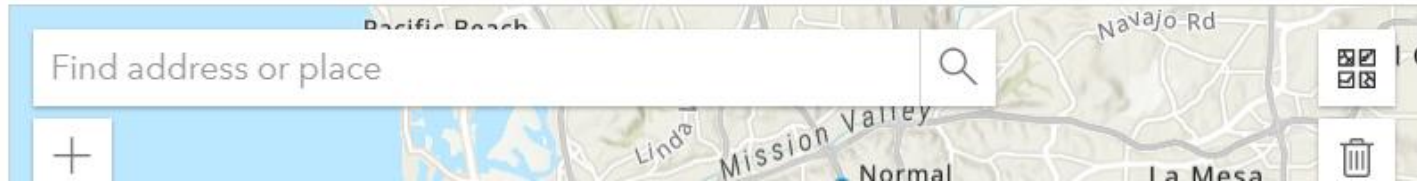
Yes

No

# Infrastructure Prioritization

Where is your suggested project located?

Please select the location on the map below. If location services are turned on your device the service the map will center around your location. If no location services are available, please use the map to search by address or intersection nearest where you'd like to add your project idea and click on the map to enter.



# Infrastructure Prioritization Process Annual Capital Improvement Program

How Your Project Idea for Your Community Becomes Reality



SUMMER



Project ideas are submitted to City Planning.

Project ideas are grouped by type and sent to the responsible department.  
(e.g. Park improvements go to Parks and Recreation Department.)



FALL



Departments use ideas to prepare a five-year infrastructure plan based on factors such as operational feasibility, legal requirements, Council input, alignment with existing plans and policies, community input and prioritization factors in Council Policy 800-14.

Plans are incorporated into a Citywide five-year infrastructure plan that summarizes the funding needs for the projects in each department plan.



WINTER

Once the Citywide five-year infrastructure plan is adopted and published, the City will post a public report detailing each community's priorities, along with what projects were selected for the plan.

# Infrastructure Prioritization Public Engagement



*Develop an investment toolkit based on public input that will be a roadmap for the City to prioritize DIF funding in high-need communities.*



*Host workshops to identify infrastructure needs and prioritize investments.*



*Implement the toolkit to prioritize infrastructure in areas with the greatest needs*



*Create a Community Member Street Team to have deeper outreach at community member level*

# Citywide Trails Master Plan

*The Citywide Trails Master Plan will guide the equitable and environmentally responsible development, enhancement and construction of existing and new trails throughout the City.*



# Park Needs Index

*The Park Needs Index will identify the areas of the City with the greatest park needs and where the development of additional recreational value and parkland will have the greatest impact for community members.*





# Inclusive Public Engagement Guide

*Inclusive Public Engagement Guide will improve representation in city-led public participation processes and associated decision-making and will provide best practices for inclusive public outreach and engagement.*



# Inclusive Public Engagement Guide

## Challenges



Those who engage *not* representative of City demographics



Input opportunities not accessible – Location, techniques and language barriers



*Negative Operational impacts* (knowledge gap, inefficiencies) without coherent engagement standards for all staff



Community members & nonprofit partners *frustrated*

# Inclusive Public Engagement Guide

## Opportunities



*To build trust between the City and the community members*



*To ensure that City decisions are informed by community needs and desires*



*To have a shared toolkit for inclusive engagement in every City Department*



*To develop new strategies and techniques that are more accessible and connected to what matters to people*



*To increase the participation of underrepresented groups in public meetings*

# Inclusive Public Engagement Guide

## Focused Discussion Group

*The City established a Focused Discussion Group comprised of 10 diverse participants, which met from April through June 2023 to:*

- **Discuss** lived experiences and perspectives on community engagement.
- **Inform** the creation and content of the *Inclusive Public Engagement Guide*.
- **Review information** and **provide input** about topics such as:
  - Principles of inclusive engagement.
  - Accessible engagement techniques.
  - How the City measures the success of an engagement process.



# Next Steps



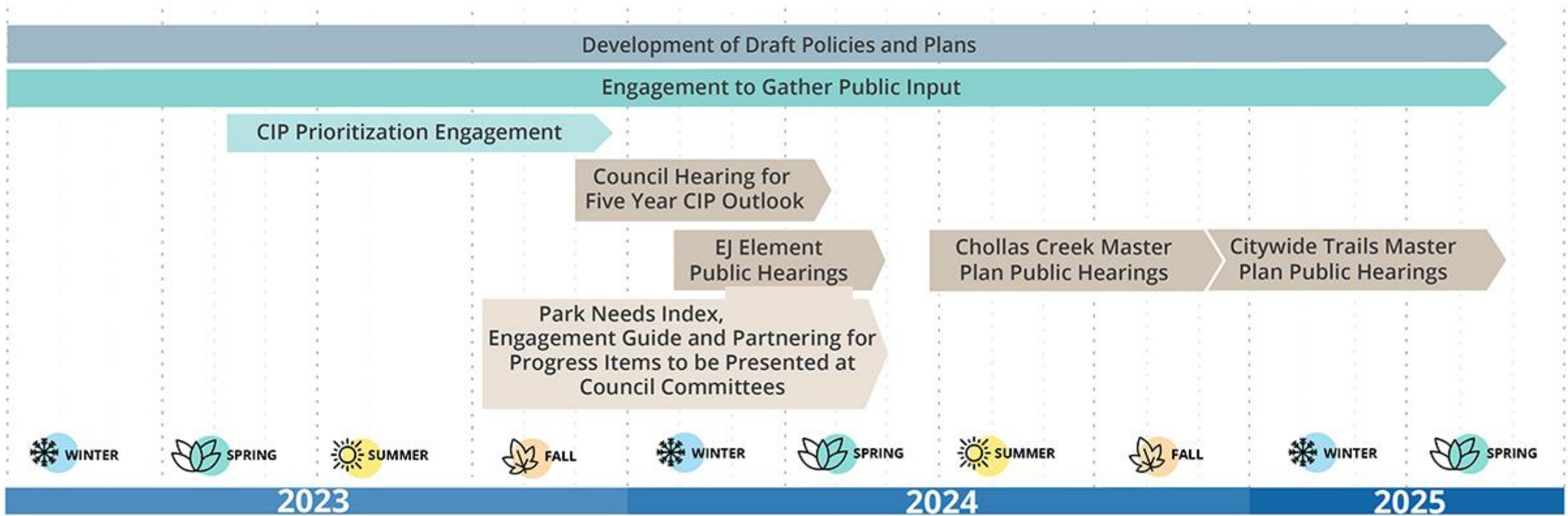
*Equity Forward  
Webpage – Intake form*

*Taking Public  
Input for  
Environmental  
Justice  
Communities*

*Survey for  
Infrastructure  
Prioritization*

*Webpage Launch for  
Chollas Creek  
Master Plan*

# Comprehensive Timeline



# Get Involved and Stay Connected

*To share how you want to engage as these important initiatives are developed, visit:*

***[www.sandiego.gov/equity-forward](http://www.sandiego.gov/equity-forward)***

