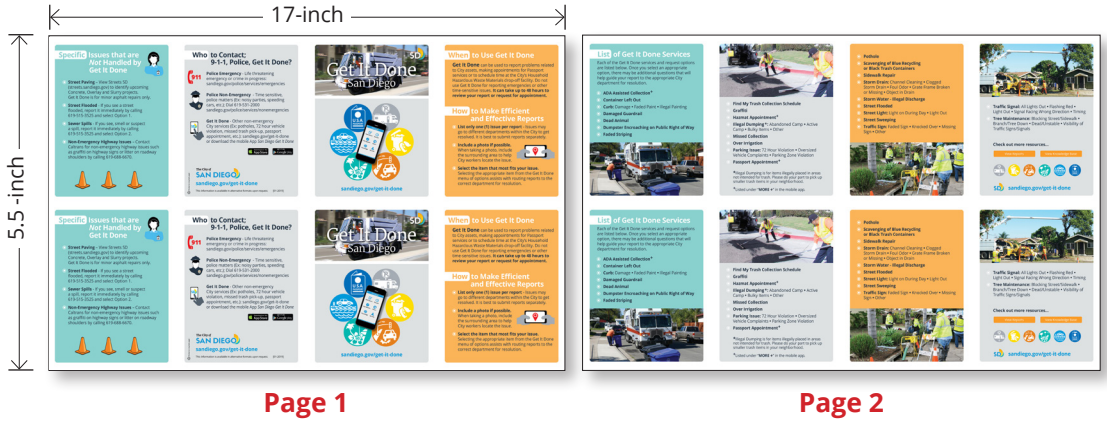


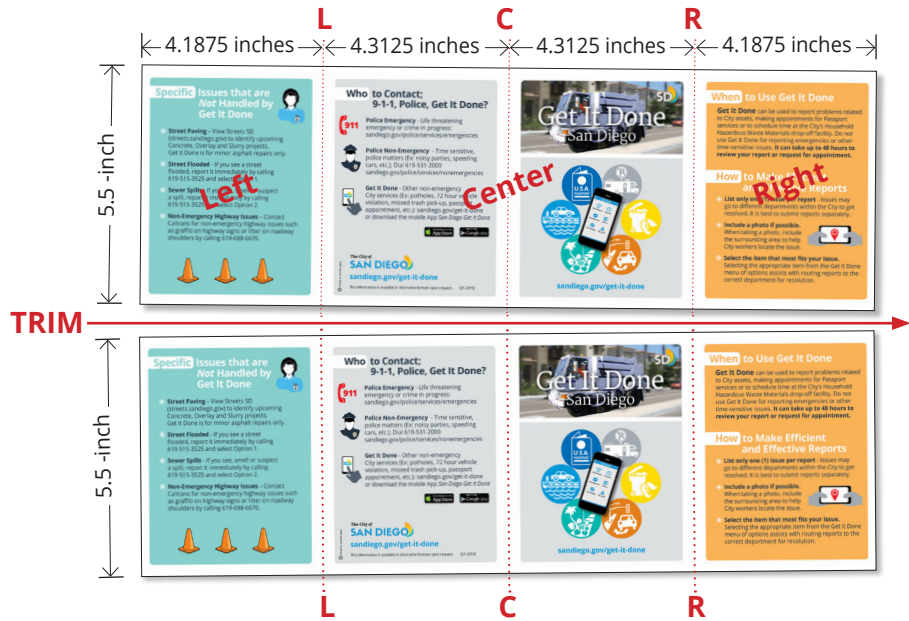
# HOW TO PRINT AND FOLD [ Double Gatefold ]

1. When printing the .PDF ensure your print settings are as follows. set to:

- "Actual Size"
- Centered on both sides
- Print on a Ledger sized paper (11- by 17-inch)
- Cardstock paper



2. Score the panels marked with dotted lines "L," "C" and "R." The left and right panels are roughly half the width of the center panels. Trim in half, lengthwise.



3. Fold inward to meet in the middle without overlapping.



4. Fold inward one more time, along the central crease.



Closed Gatefold