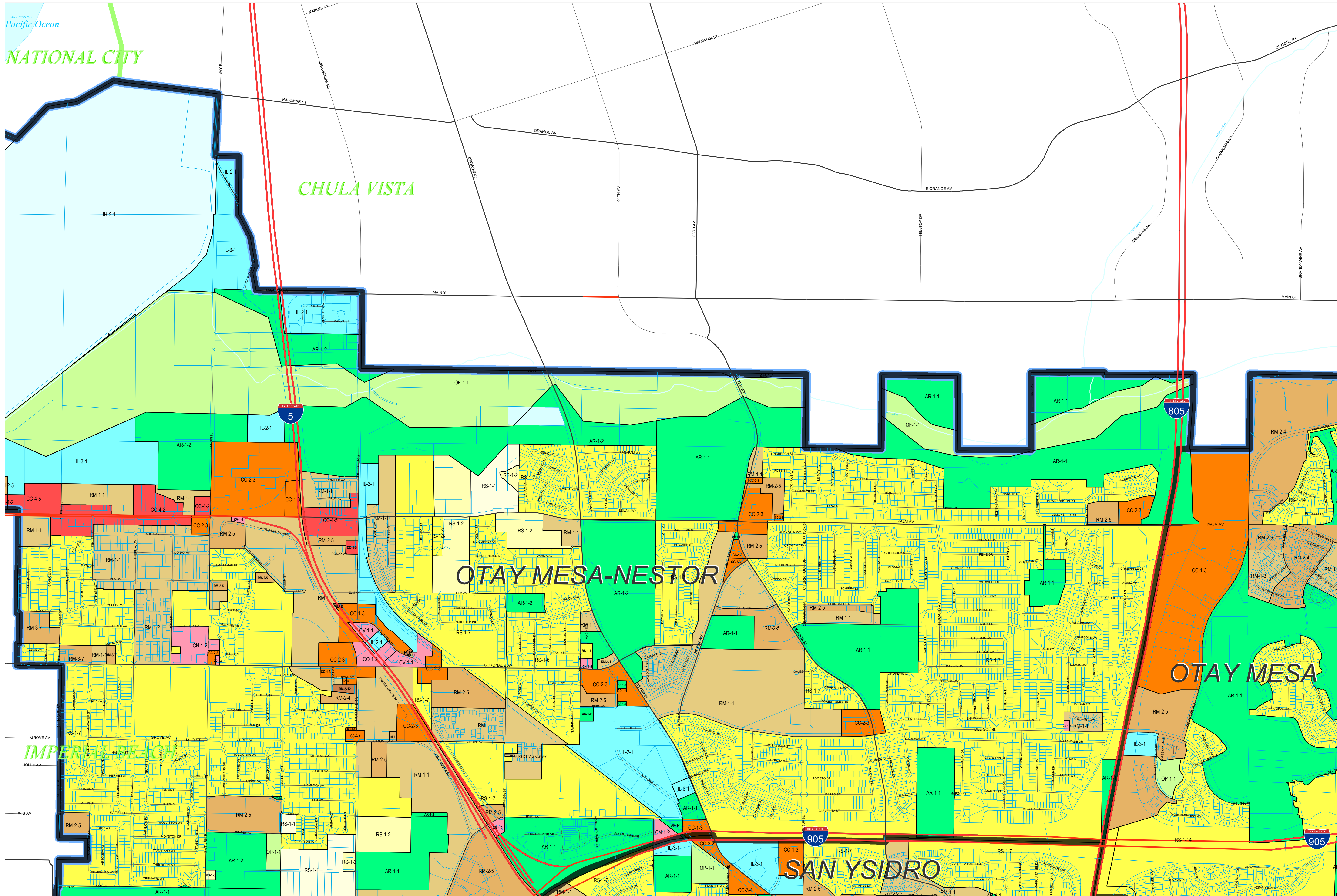


Official Zoning Map



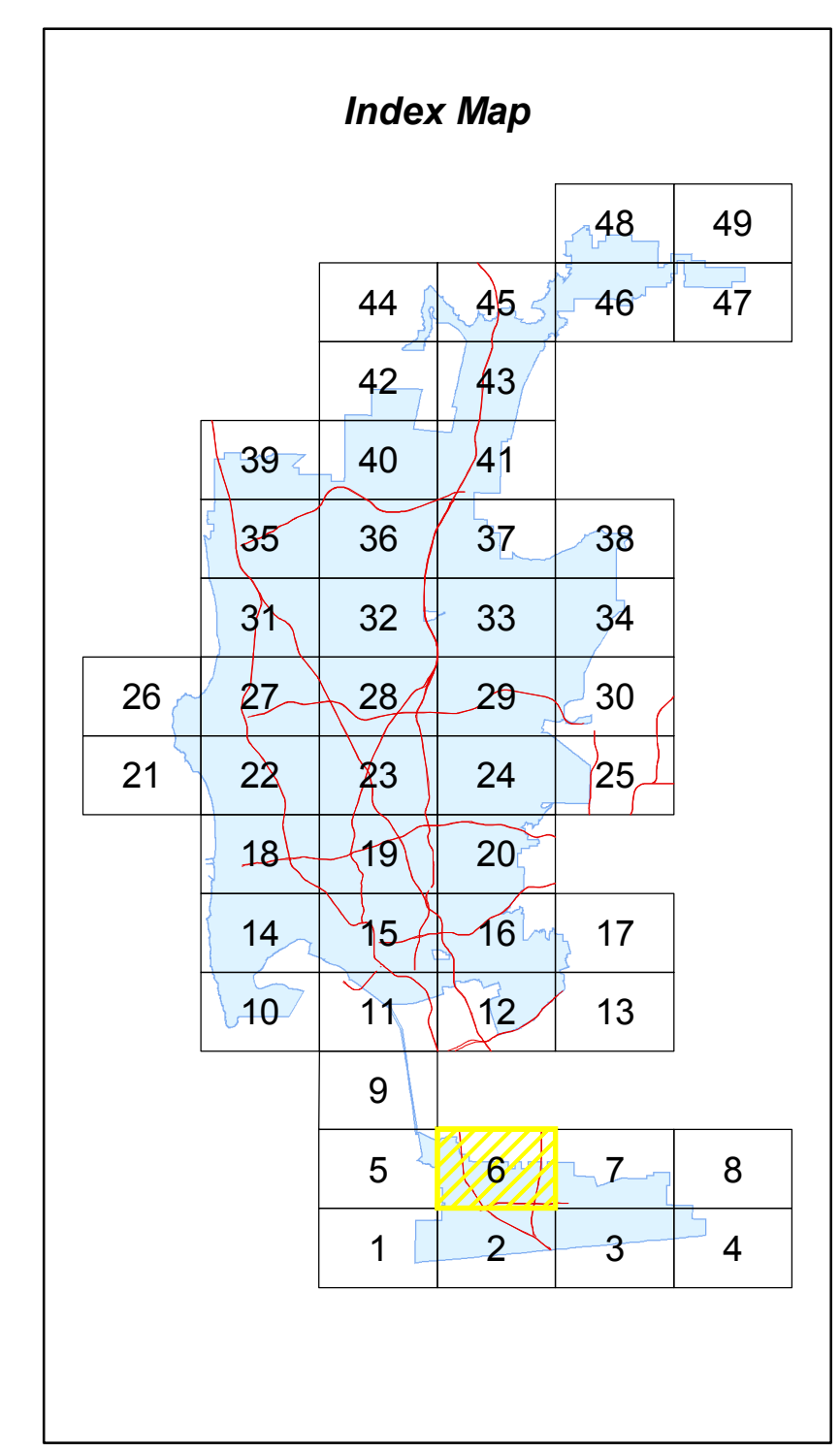
Legend

- City of San Diego Boundary
- Community Plan Areas
- Parcels

Zoning

ZONE_NAME

- AR-1-1
- AR-1-2
- CC-1-3
- CC-2-2
- CC-2-3
- CC-3-4
- CC-4-2
- CC-4-5
- CN-1-2
- CO-1-2
- CV-1-1
- IH-2-1
- IL-2-1
- IL-3-1
- OF-1-1
- OP-1-1
- RM-1-1
- RM-1-2
- RM-1-3
- RM-2-4
- RM-2-5
- RM-2-6
- RM-3-7
- RM-4-10
- RM-5-12
- RS-1-1
- RS-1-14
- RS-1-2
- RS-1-3
- RS-1-5
- RS-1-6
- RS-1-7

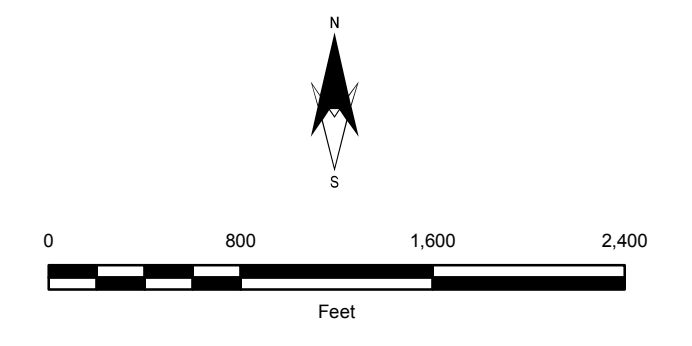


SanGIS Basemap Accuracy
 SanGIS Land (Lot) basemap data for the City of San Diego tested 20.7' horizontal accuracy at the 95% confidence level.
 This data meets the ASPRS Standard for Class 1 Map Accuracy at a scale of 1:12,000 (1"=1,000').
 This assessment assumes utilization of the data on a citywide basis. Localized data may exceed or fail to meet this accuracy with errors in excess of 100' possible.

THIS MAP/DATA IS PROVIDED WITHOUT WARRANTY OF ANY KIND, EITHER EXPRESS OR IMPLIED, INCLUDING BUT NOT LIMITED TO, THE IMPLIED WARRANTIES OF MERCHANTABILITY AND FITNESS FOR A PARTICULAR PURPOSE. Note: This product may contain information from the SANDAG Regional Information System which cannot be reproduced without the written permission of SANDAG. This product may contain information reproduced with permission granted by RAND McNALLY & COMPANY to SanGIS. This map is copyrighted by RAND McNALLY & COMPANY. It is unlawful to copy or reproduce all or any part thereof, whether for personal use or resale, without the prior written permission of RAND McNALLY & COMPANY.
 Copyright SanGIS 2009 - All Rights Reserved.
 Full text of this legal notice can be found at: http://www.sanGIS.org/egag_Notice.htm



City of San Diego
Development Services Department



GRID TILE: 6
 GRID SCALE: 800
 DATE: 10/28/2019 9:14:23 AM