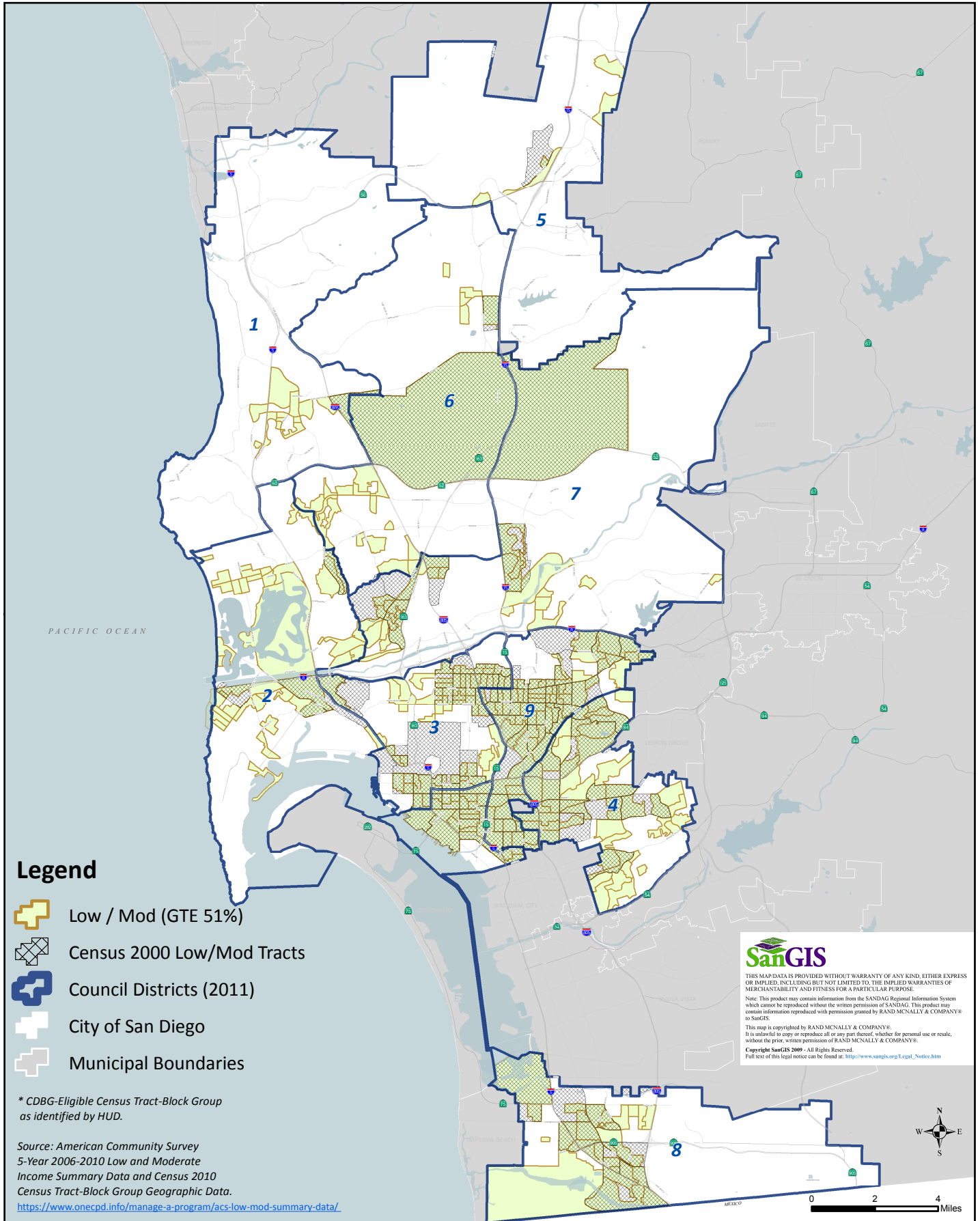









# City of San Diego : Community Development Block Grant

HUD Low and Moderate Income Census Block Groups (Household Income 80% or Below) \*

Date: 7/29/2014



## Legend

-  Low / Mod (GTE 51%)
-  Census 2000 Low/Mod Tracts
-  Council Districts (2011)
-  City of San Diego
-  Municipal Boundaries

\* CDBG-Eligible Census Tract-Block Group as identified by HUD.

Source: American Community Survey  
 5-Year 2006-2010 Low and Moderate  
 Income Summary Data and Census 2010  
 Census Tract-Block Group Geographic Data.  
<https://www.onecpd.info/manage-a-program/acs-low-mod-summary-data/>



THIS MAP DATA IS PROVIDED WITHOUT WARRANTY OF ANY KIND, EITHER EXPRESS OR IMPLIED, INCLUDING BUT NOT LIMITED TO, THE IMPLIED WARRANTIES OF MERCHANTABILITY AND FITNESS FOR A PARTICULAR PURPOSE.  
 Note: This product may contain information from the SANDAG Regional Information System which cannot be reproduced without the written permission of SANDAG. This product may contain information reproduced with permission granted by RAND MCNALLY & COMPANY to SanGIS.  
 This map is copyrighted by RAND MCNALLY & COMPANY.  
 It is unlawful to copy or reproduce all or any part thereof, whether for personal use or resale, without the prior written permission of RAND MCNALLY & COMPANY.  
 Copyright SanGIS 2009 - All Rights Reserved.  
 Full text of this legal notice can be found at: [http://www.sangis.org/Legal\\_Notice.htm](http://www.sangis.org/Legal_Notice.htm)



0 2 4 Miles