

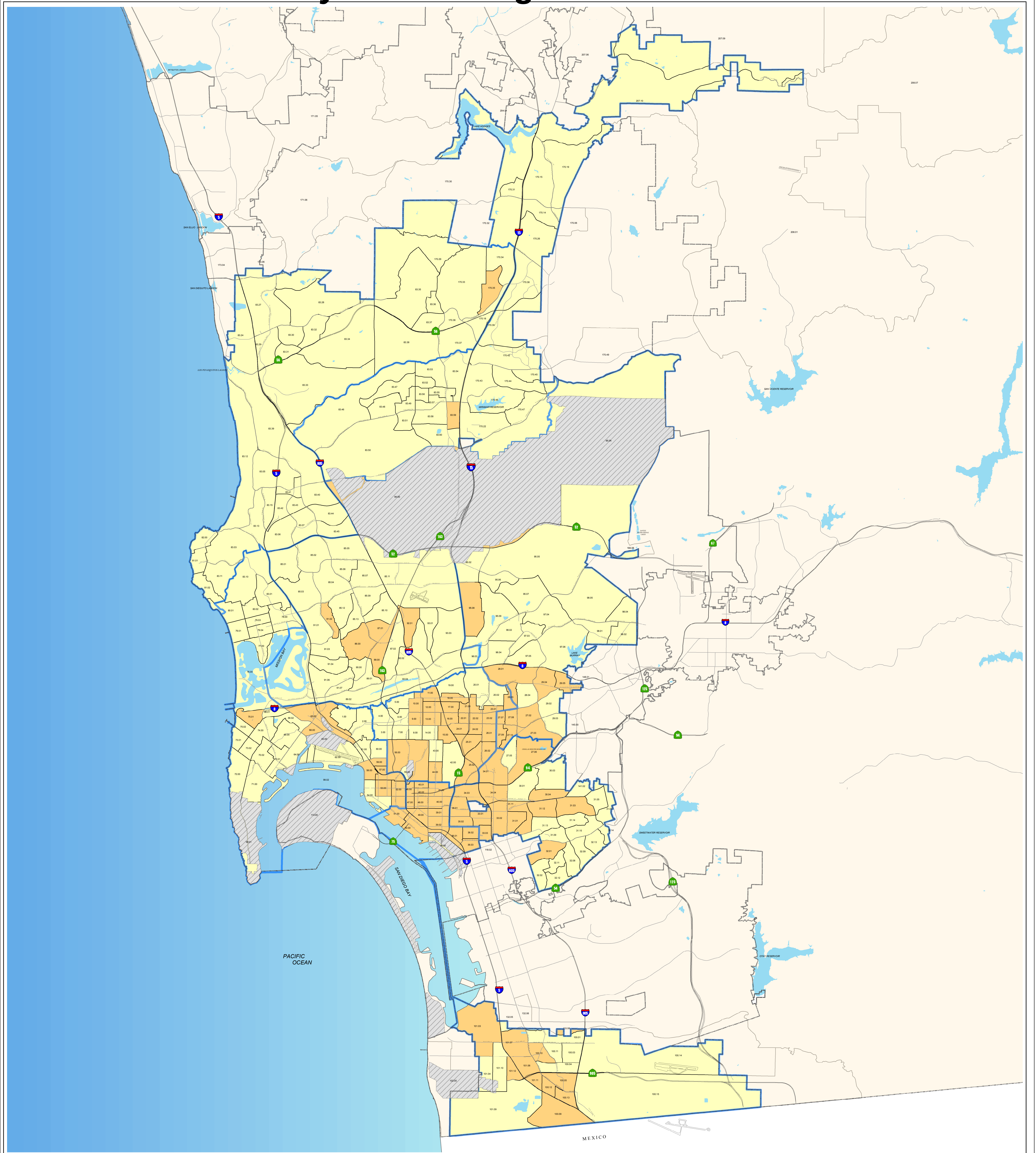
**City of San Diego
LMA-CDBG Eligible 2000 Census Tracts**

To find if an address is in an eligible census tract, access the website below, enter the address and compare with list.
http://factfinder.census.gov/servlet/AGSGeoAddressServlet?_programYear=50&_treelid=420&_lang=en&_sse=on

	Census Tract	L/M Pop %
District 1		
1	83.05	64.75
2	170.35	51.48
District 2		
1	51.00	82.10
2	52.00	67.42
3	53.00	67.47
4	56.00	76.61
5	57.00	74.36
6	58.00	71.26
7	59.00	56.93
8	62.00	62.21
9	65.00	58.72
10	66.00	82.78
11	75.01	56.00
District 3		
1	9.00	70.20
2	10.00	56.11
3	11.00	55.68
4	12.00	71.04
5	13.00	65.50
6	15.00	58.67
7	16.00	76.27
8	17.00	71.05
9	18.00	68.82
10	21.00	67.21
11	22.01	87.32
12	22.02	86.43
13	23.01	76.68
14	23.02	82.52
15	24.01	77.49
16	24.02	82.83
17	25.01	77.27
18	25.02	60.29
19	26.01	80.84
20	26.02	77.90
21	28.03	61.04
22	34.01	57.62
23	44.00	55.61
24	56.00	76.61
District 4		
1	27.06	66.69
2	30.04	70.52
3	31.01	53.47
4	31.03	55.21
5	31.11	70.18
6	31.12	52.37
7	32.01	56.68
8	33.01	69.70
9	33.02	78.82
10	33.03	79.62
11	34.01	57.62
12	34.03	73.85
13	34.04	84.86
14	35.01	81.89
15	35.02	73.43


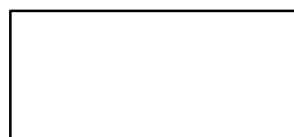
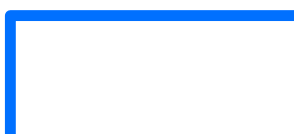
	Census Tract	L/M Pop %
District 5		
1	83.59	56.76
2	94.00	61.04
3	207.09	57.14
4	207.10	75.00
5	208.01	52.38
District 6		
1	86.00	73.53
2	87.01	53.89
3	88.00	59.05
4	91.02	53.69
5	92.01	62.86
District 7		
1	27.02	58.12
2	27.03	57.87
3	27.07	87.14
4	27.08	87.72
5	27.09	88.65
6	27.10	77.49
7	28.01	57.14
8	28.03	61.04
9	29.04	60.51
10	29.05	55.56
11	94.00	61.04
12	95.08	68.53
District 8		
1	36.01	81.69
2	36.02	83.86
3	36.03	85.44
4	39.01	81.55
5	39.02	82.63
6	40.00	86.09
7	41.00	75.65
8	45.01	75.47
9	45.02	75.34
10	46.00	66.93
11	47.00	88.61
12	48.00	90.22
13	49.00	83.38
14	50.00	78.22
15	51.00	82.10
16	100.05	67.18
17	100.09	73.14
18	100.10	51.55
19	100.12	77.20
20	100.13	84.74
21	100.15	76.50*
22	101.03	67.13
23	101.06	66.19
24	101.07	53.37
25	101.11	63.23
26	101.12	72.31
27	133.08	98.73

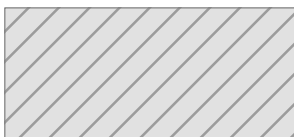
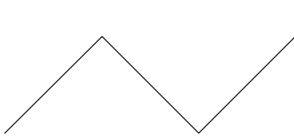
HUD Low/Mod Income City of San Diego Census Tracts

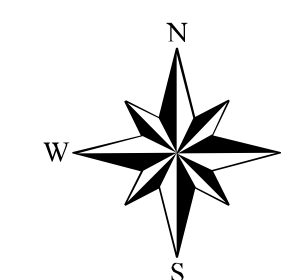


Legend



-  Low/Mod Income
-  Census Tract Boundary
-  Council District Boundary

-  Military Use
-  Roads / Freeways



THIS MAP/DATA IS PROVIDED WITHOUT WARRANTY OF ANY KIND, EITHER EXPRESS OR IMPLIED, INCLUDING BUT NOT LIMITED TO, THE IMPLIED WARRANTIES OF MERCHANTABILITY AND FITNESS FOR A PARTICULAR PURPOSE. Note: This product may contain information from the SANDaGoRide Information System which cannot be reproduced without the written permission of SAND. This product may contain information reproduced with permission granted by RAND MCNALLY & COMPANY to SanGIS. This map is copyrighted by RAND MCNALLY & COMPANY. It is unlawful to copy or reproduce all or any part thereof, whether for personal use or resale, without the prior, written permission of RAND MCNALLY & COMPANY.

Copyright SanGIS 2009 All Rights Reserved. Full text of this legal notice can be found at http://www.sangis.org/Legal_Notice.htm