



THE CITY OF SAN DIEGO

## Harbor Drive Construction Projects

# TRAFFIC AND PARKING ADVISORY

### Week of June 18

To facilitate construction activities associated with various projects located on Harbor Drive, temporary road and parking-lot closures and traffic detours will be required. These projects will repair damaged or deteriorating underground water and wastewater infrastructure in the area. This advisory provides a summary of the anticipated weekly impacts for Monday, June 18 through Sunday, June 24.

**Please use caution when traveling through the construction zones, follow the temporary detour and no parking signs. The no parking signs will be enforced. Make sure to include additional time into your daily commute.**

#### Harbor Drive Southbound

- Cesar E. Chavez Parkway to 28<sup>th</sup> Street — Intermittent lane closures with posted detours
- 28<sup>th</sup> Street to Naval Base San Diego (NBSD) Pass and Decal — All southbound lanes closed

#### Harbor Drive Northbound

- NBSD Pass and Decal to the 28<sup>th</sup> Street — One lane open
- 28<sup>th</sup> Street to Cesar E. Chavez Parkway — All northbound lanes closed

#### Gate 2, Harbor Drive and Belt Street

- Intersection Closed
- Large delivery truck access before 4 p.m. by appointment only

#### NASSCO Employee Parking Lot #2

- Exit lot, follow directional signage and execute a u-turn immediately after the railroad track crossing on Harbor Drive

Thank you for your patience and understanding while work progresses on these important infrastructure projects. Every provision will be taken to quickly and efficiently complete the work.

#### For More Information:

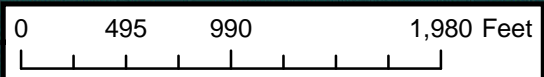
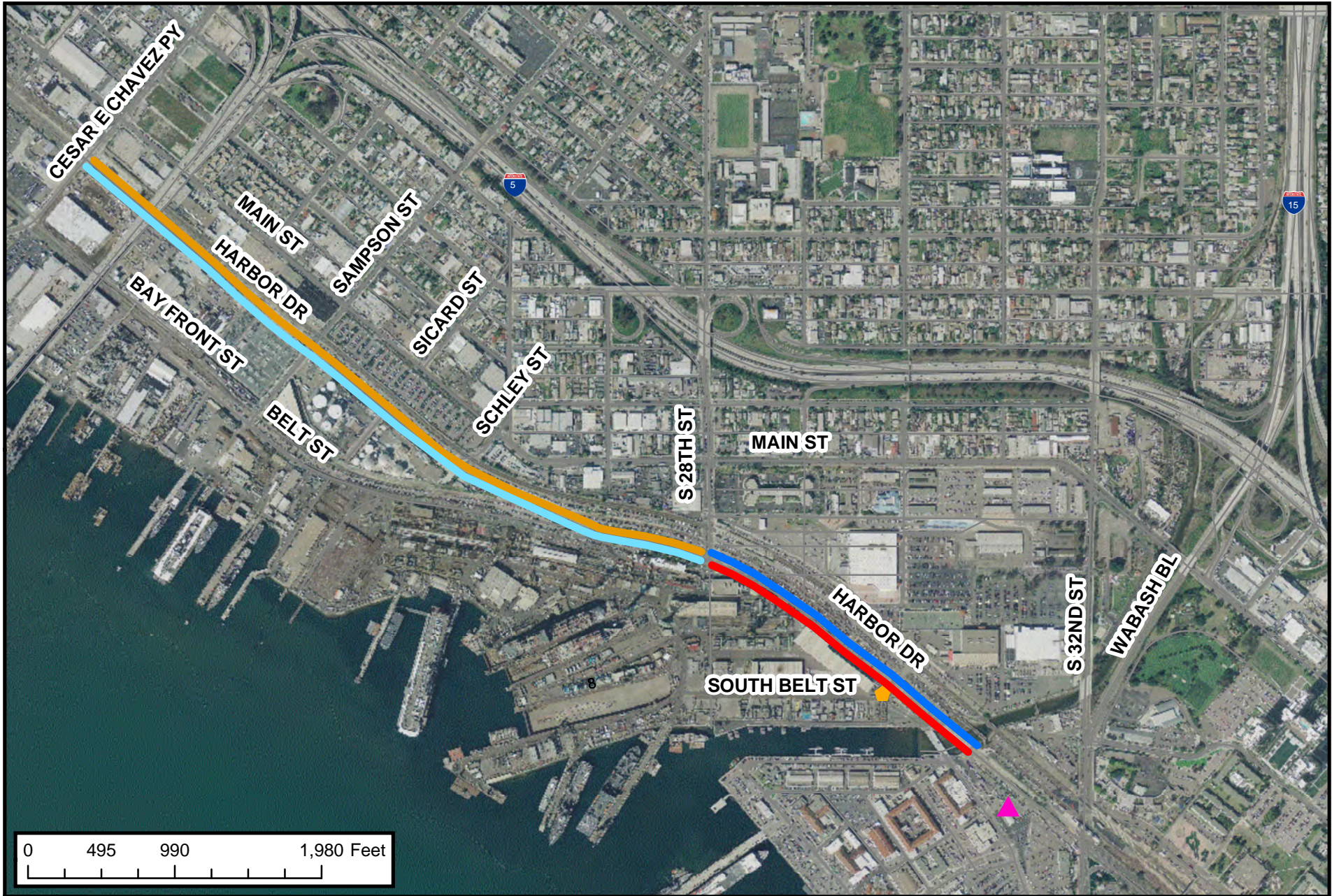
Email: [engineering@sandiego.gov](mailto:engineering@sandiego.gov)  
Call: Scott Robinson, Public Information Officer  
(619) 533-3749

###

**Public Works Department**  
**Engineering and Capital Projects**  
1010 Second Avenue, Suite 1200 • San Diego, California 92101-4905  
Tel (619) 533-4207







- ▬ All Southbound lanes closed
- ▬ One Northbound lane open
- ▬ Intermittent lane closers with posted detours
- ▬ All Northbound lanes closed

- ◆ Intersection closed at Gate 2  
(Large delivery truck access before 4 pm by appointment only)
- ▲ Naval Base San Diego Pass and Decal location



Week of June 18, 2012



THIS MAP/DATA IS PROVIDED WITHOUT WARRANTY OF ANY KIND, EITHER EXPRESS OR IMPLIED, INCLUDING BUT NOT LIMITED TO, THE IMPLIED WARRANTIES OF MERCHANTABILITY AND FITNESS FOR A PARTICULAR PURPOSE. Note: This product may contain information from the SANDAG Regional Information System which cannot be reproduced without the written permission of SANDAG. This product may contain information reproduced with permission granted by RAND MCNALLY & COMPANY® to SanGIS. This map is copyrighted by RAND MCNALLY & COMPANY®. It is unlawful to copy or reproduce all or any part thereof, whether for personal use or resale, without the prior, written permission of RAND MCNALLY & COMPANY®.