



THE CITY OF SAN DIEGO

Harbor Drive Construction Projects

TRAFFIC AND PARKING ADVISORY

Monday, July 29, 2013 through Friday, August 2, 2013

The City will be repairing damaged or deteriorating underground water and wastewater infrastructure in the area. Construction operations are anticipated to be complete by mid August, with street resurfacing taking place shortly afterwards. This advisory provides a summary of the anticipated impacts for Monday, July 29, 2013 through Friday, August 2, 2013, starting at 7 a.m. to 5 p.m. This work will impact traffic on Harbor Drive and 28th Street as follows:

Harbor Drive Southbound

- At the 28th Street Intersection — Middle Lane Closed

Harbor Drive Northbound

- No left turn or U-turns at 28th Street intersection

28th Street towards NASSCO

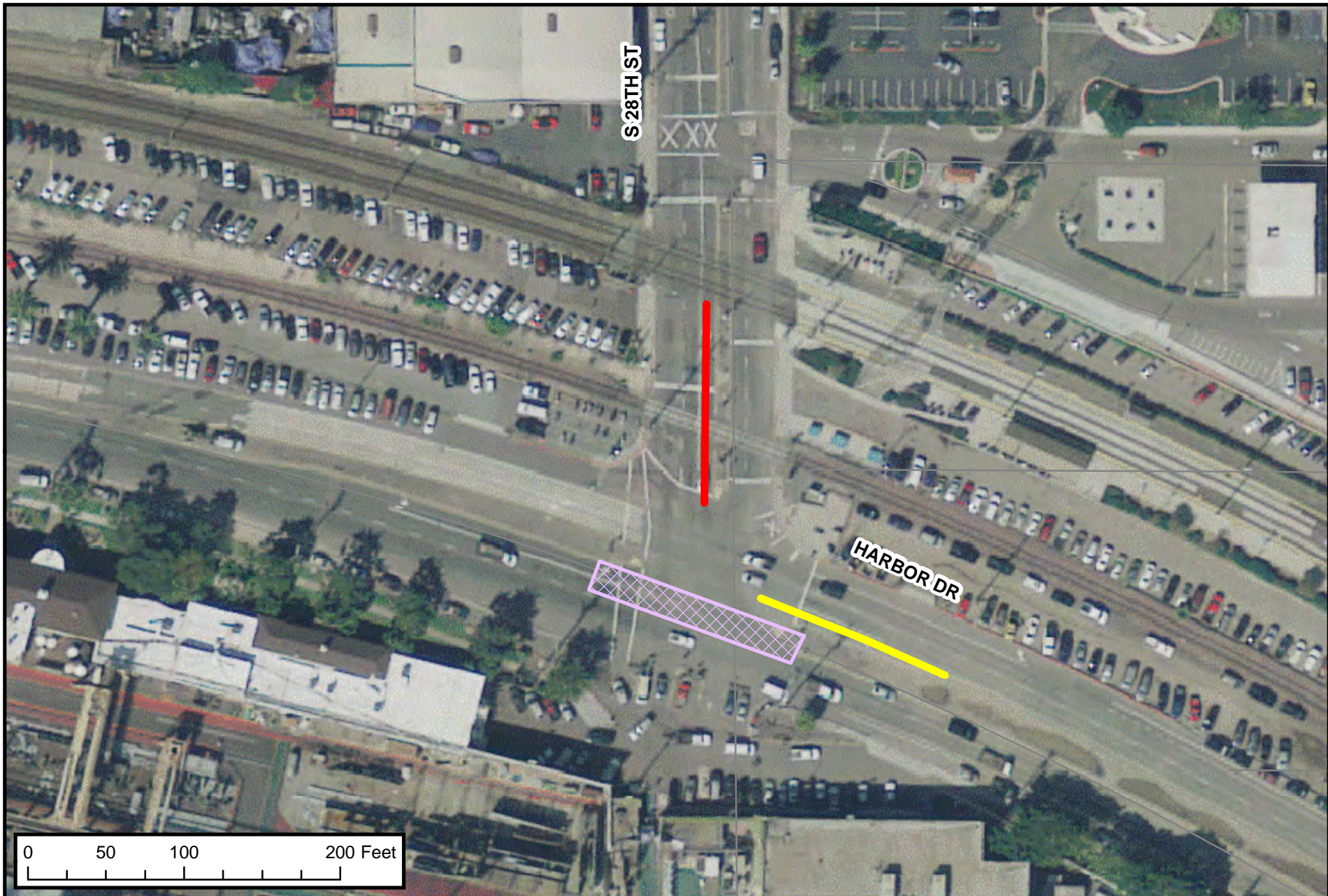
- No left turn onto Southbound Harbor Drive

Please use caution when traveling through the construction zone, follow the temporary detour and no parking signs. The no parking signs will be enforced. Make sure to include additional time into your daily commute.

Thank you for your patience and understanding while work progresses on these important infrastructure projects. Every provision will be taken to quickly and efficiently complete the work.

For More Information: Email: engineering@sandiego.gov
Call: Scott Robinson, Public Information Officer
(619) 533-3749

###



- No left turn from NB Harbor Drive/U-turn in the intersection.
- No left turn from 28th St onto SB Harbor Drive.

Area of work.



Week of July 29, 2013



THIS MAP/DATA IS PROVIDED WITHOUT WARRANTY OF ANY KIND, EITHER EXPRESS OR IMPLIED, INCLUDING BUT NOT LIMITED TO, THE IMPLIED WARRANTIES OF MERCHANTABILITY AND FITNESS FOR A PARTICULAR PURPOSE. Note: This product may contain information from the SANDAG Regional Information System which cannot be reproduced without the written permission of SANDAG. This product may contain information reproduced with permission granted by RAND MCNALLY & COMPANY® to SanGIS. This map is copyrighted by RAND MCNALLY & COMPANY®. It is unlawful to copy or reproduce all or any part thereof, whether for personal use or resale, without the prior, written permission of RAND MCNALLY & COMPANY®.