



THE CITY OF SAN DIEGO

M E M O R A N D U M

DATE: September 19, 2011

TO: Independent Rates Oversight Committee (IROC)

FROM: Guann Hwang, Deputy Director, Public Utilities Department
James Nagelvoort, Acting Assistant Director, Public Works-Engineering Department

SUBJECT: FY2011 Capital Improvement Projects (CIP) – 4th Quarter Updates

The Public Utilities and Public Works-Engineering Departments hereby submit the 4th Quarter CIP project updates for the period of April 1 to June 30, 2011.

This update covers capital project highlights, dash board information, forecast and actual expenditures, project schedules including mandated deadlines, and project change orders that exceed 10% of the project budget.

GH/tp

Attachments: 1) Project Highlights
2) Dash Board Information
3) Water and Wastewater Regulatory Project Updates
4) Forecast vs. Actual Expenditures
5) Project Schedules
6) Change Orders

CIP Project Highlights

54th & Market Street

This project is complete and consists of the construction of seventy-six (76) feet of new 8-inch sewer main under the MTS trolley tracks. The work is located near the intersection of 54th and Market Streets, in the Encanto Neighborhoods Community. The Notice of Completion will be recorded in July 2011.

Pipeline Rehabilitation K-1

This project includes the rehabilitation of approximately 36,465 linear feet (6.91 miles) of 8-inch sewer mains with trenchless technology, construction of 21 new manholes, replacement of 10 existing manholes and rehabilitation of 25 existing manholes in the Linda Vista and Serra Mesa communities.



Sewer & Water Group Job 742

This project is located in the La Jolla community. It includes the replacement of approximately 4,013 linear feet of existing 6-inch and 8-inch vitrified clay sewer mains, laterals and manholes originally installed as early as 1910. The project will also include replumbing of sewer laterals, installing curb ramps and paving restoration.



USIU Trunk Sewer

The existing pipeline is located in the Scripps Miramar Ranch Community Plan Area, was originally installed in 1969 and is at the end of its design life. The project will bring this trunk up to current City standards and will relocate a major portion of the trunk sewer to the public right of way.

The project consists of replacing approximately 2.2 miles (11,700 linear feet) of trunk sewer main ranging in diameter from 18 to 21 inches and abandoning approximately 0.4 miles (2,240 linear feet) of existing 15-inch sewer mains.

Construction began in April 2011 and is estimated for completion by May 2012.



RECYCED WATER PROJECTS

Carmel Valley Recycled Water Pipeline

The Carmel Valley Recycled Water Pipeline is a component of the City of San Diego Recycled Water Master Plan Update 2005, Phase II system expansion. The network of pipelines will increase the supply of recycled water to the northern section of the City.

This pipeline project is approximately 12,000 feet of 4-inch, 6-inch, 8-inch and 12-inch PVC and Ductile iron pipeline which will begin at Carmel Country Road/at State Route 56, and end at Carmel Valley Road/at State Route 56.



Construction began in September 2010 and is estimated to be completed in November 2011.

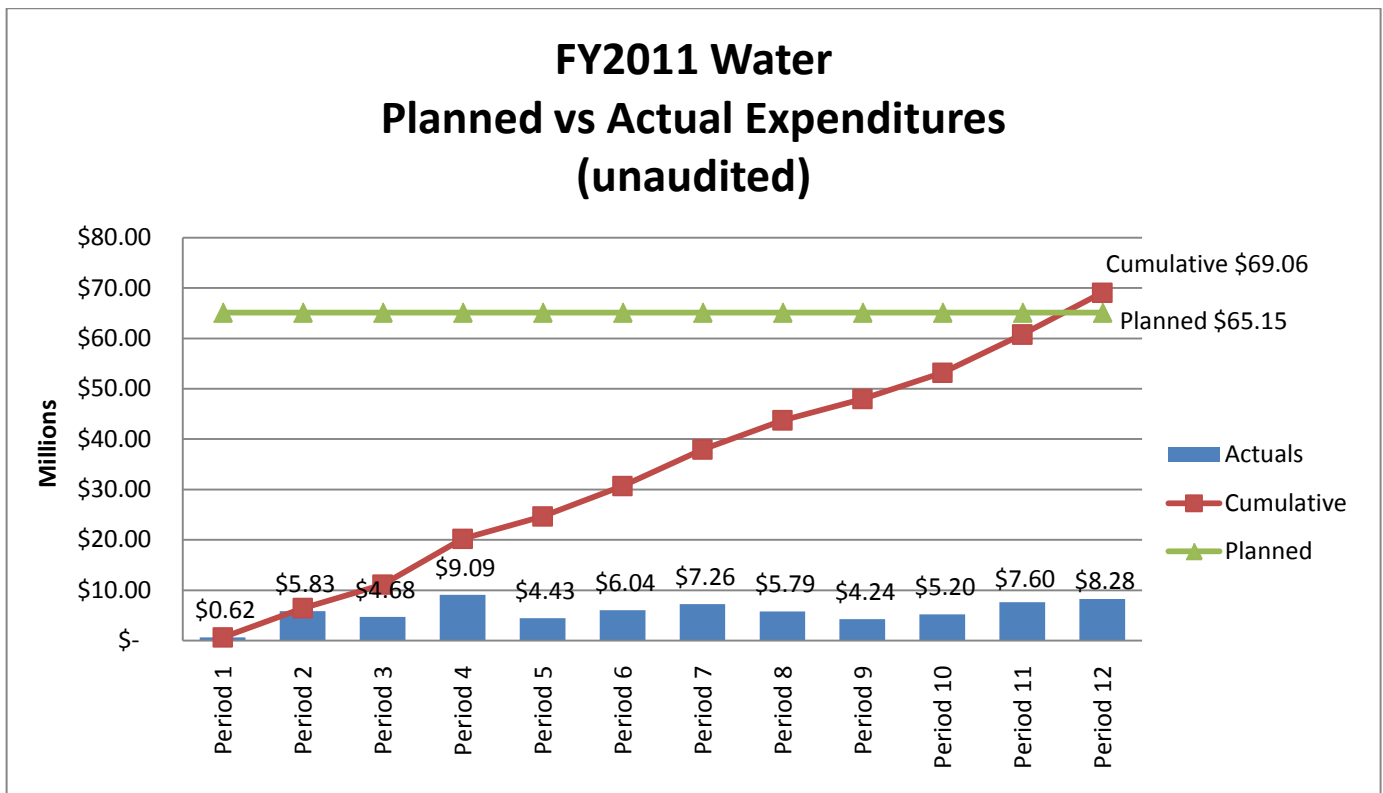
Dash Board Information

Program Highlights:

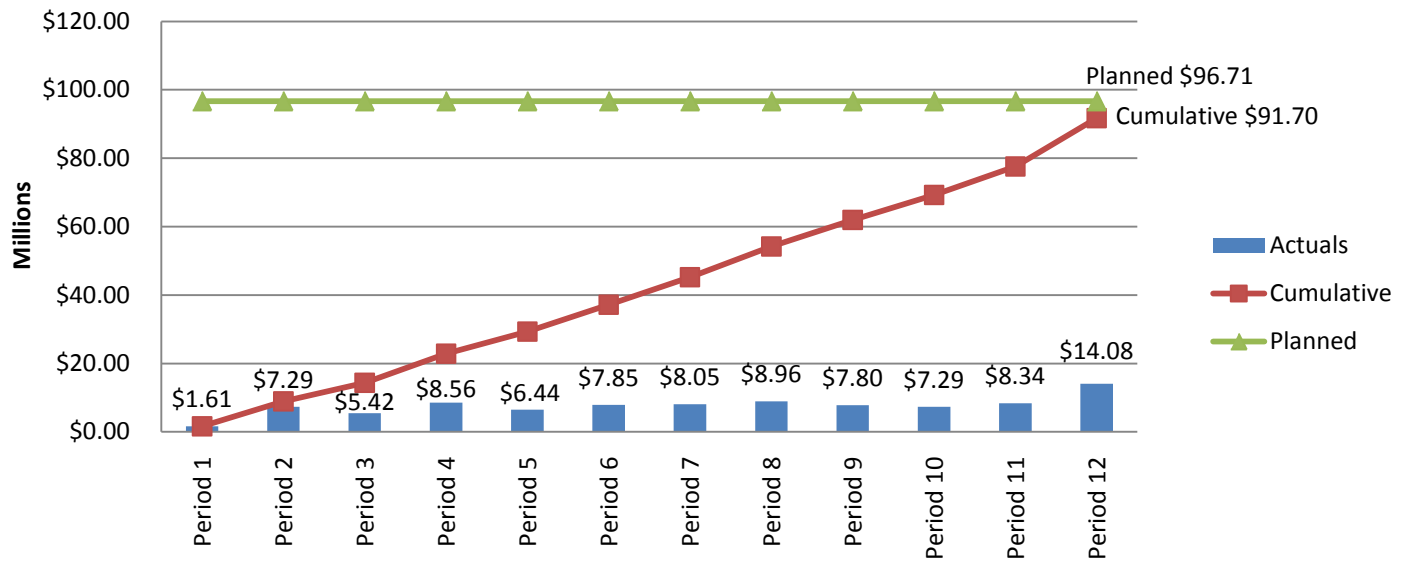
- | | |
|-------------------------------------|-----------------------------|
| ✓ Assigned New Projects to E&CP | 44 Projects, \$197 Million |
| ✓ Completed Preliminary Engineering | 48 Projects, \$214 Million |
| ✓ Completed 100% Design | 79 Projects, \$283 Million |
| ✓ Awarded Construction Contracts | 59 Contracts, \$190 Million |
| ✓ Completed Construction Contracts | 32 Contracts, \$277 Million |

Note: Since the quarter represents a 3 month period, it is possible for project(s) to complete more than one phase listed above, and therefore be listed multiple times.

Planned vs. Actual Expenditures:



FY2011 Wastewater Planned vs. Actual Expenditures (unaudited)



Water and Wastewater Regulatory Project Updates

The Public Utilities Department's funding is provided by the water and sewer rates to replace, upgrade and expand infrastructure. The infrastructure improvements include projects contained in the Compliance Order from the California Department of Public Health (DPH) for water and Environmental Protection Agency (EPA) Consent Decree projects for the wastewater system.

WATER – Department of Public Health (DPH) Compliance Order for Contract Award.

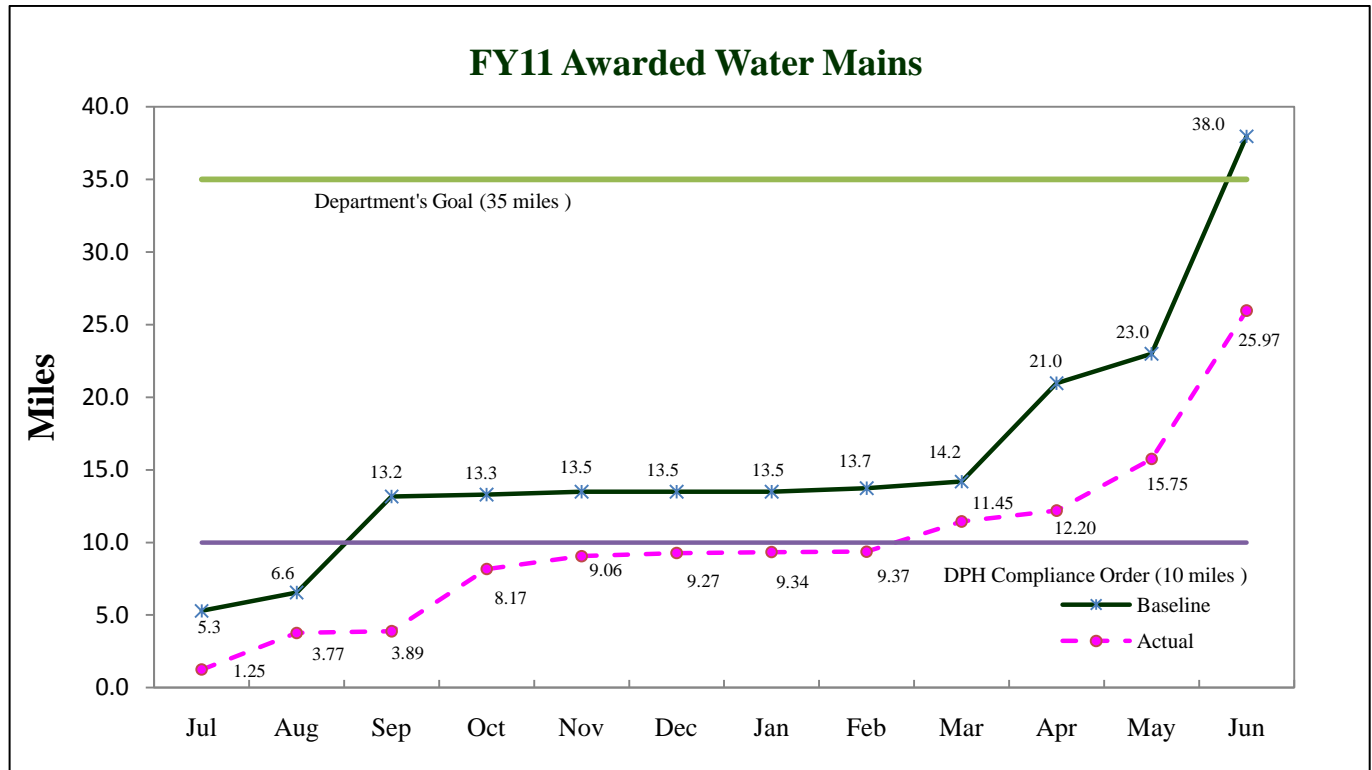
The DPH compliance order requires the completion of eight pump stations, ten reservoirs/standpipes, nine treatment related projects, four pipelines, and awarding ten miles of Cast Iron (CI) main replacement per fiscal year. As of June 30, 2011, 25.97 CI Miles has been awarded for FY 2011.

As of June 30, 2011, all eight pump stations, ten reservoirs/standpipes, nine treatment-related projects, and four pipelines were completed.

Fiscal Year	DPH Compliance Order (Miles Awarded)	Department's Goal (Miles Awarded)	Awarded (Miles)	Completed (Miles)
FY08	10	20	18.66	0
FY09	10	20	20.94	10.23
FY10	10	20	20.10	18.39
FY11	10	35	25.97	24.48
Total	40	95	85.67	53.10

Footnotes:

- 1) Awarded miles are based on the Notice to Proceed issued by Purchasing Department.
- 2) Completed miles are based on the Notice of Completion issued by Field Engineering Division



WASTEWATER – Environmental Protection Agency Consent Decree for Contract Completion

The EPA Consent Decree mandates the repair, replacement, and rehabilitation of 450 miles of aged sewer pipes, upgrade and replacement of 17 trunk sewers and 26 pump stations (PS) by June 2013. Below is a list of mandated project updates as of June 30, 2011.

- 381 of the 450 miles of sewer pipes have been completed.
- Of the 17 trunk sewers, eight have been completed, three are in design, and the remaining six trunk sewers are in construction or to be awarded.
- 12 of the 26 pump stations have been completed. One is in design and the remaining thirteen pump stations are either in construction or to be awarded.

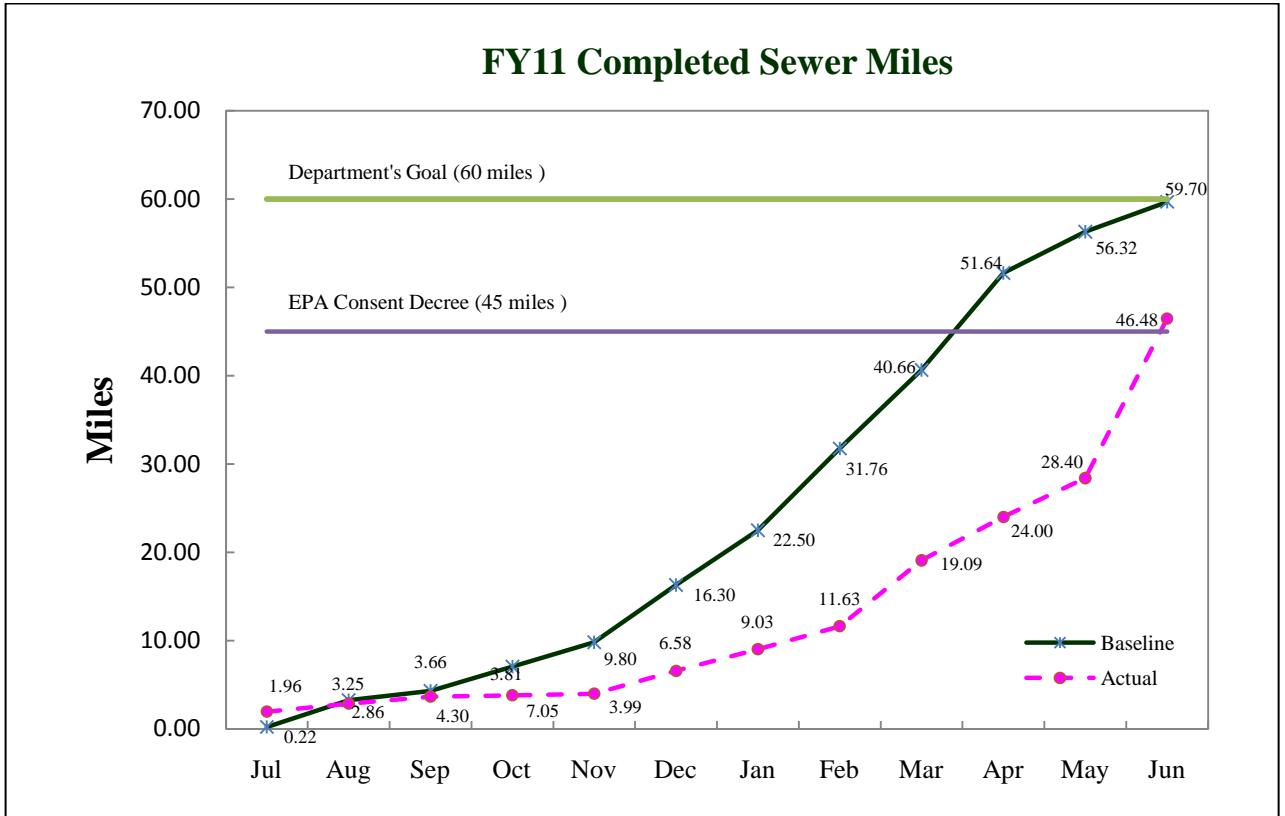
Fiscal Year	EPA Consent Decree (Miles Completed)	Department's Goal (Miles Completed)	Awarded (Miles)	Completed (Miles)
FY08	30	30	39.35	30.1 ⁽¹⁾
FY09	45	45	45.20	49.5
FY10	45	60	42.37	54.3
FY11	45	60	67.50	46.5
Total	165	195	194.42	180.4

Notes:

(1) Includes 14.1 banked miles and awarded contracts from previous years.

Footnotes:

- 1) Awarded miles are based on the Notice to Proceed issued by Purchasing Department.
- 2) Completed miles are based on the Beneficial Occupancy/Beneficial Use (BO/BU) issued by Field Engineering Division



Forecast vs. Actual Expenditures

CIP EXPENDITURE TABLE - WATER

Public Utilities - Water Funds

Period 12

<i>Funded Prog.</i>	<i>Match</i>	<i>Project Name</i>	<i>Total Project Cost</i>	<i>Original FY11 Projected Expenditures</i>	<i>FY11 Period 12 Encumbrances SAP (unaudited)</i>	<i>FY11 Period 12 Expenditures SAP (unaudited)</i>	<i>FY11 Expenditures vs. FY11 Projected Expenditures</i>
ABJ00001		Water Pump Station Restoration					
B10006		Tierrasanta (Via Dominique) Pump Station	\$8,000,000	\$100,000	\$0	\$83,361	83.36%
B10070		Scripps Ranch Pump Station	\$13,079,000	\$200,752	\$0	\$140,250	69.86%
B11020		Climax Pump Station	\$3,690,000		\$0	\$15,776	
B11023		College Ranch Hydro Pump Station	\$3,690,000		\$0	\$36,477	
B11072		Soledad Pump Station Upgrade	\$3,200,000		\$0	\$0	
ABK00001		Dams and Reservoirs					
B00171		El Capitan Seepage Recovery Pump	\$82,000		\$0	\$16,075	
B10165		Scripps Ranch Reservoir Slope Repair & Bracket Rpl	\$250,000	\$18,000	\$14,492	\$57,116	317.31%
ABL00001		Standpipe and Reservoir Rehabilitations					
B00142		La Jolla Country Club Reservoir Emergency Repair	\$250,000		\$0	\$0	
B00143		San Carlos Reservoir Interior Enhancement	\$1,159,022	\$250,000	\$34,960	\$84,232	33.69%
B00155		Catalina Standpipe Renovation	\$2,540,000	\$67,426	\$24,144	\$126,553	187.69%
B00156		Pomerado Park Reservoir Upgrade			\$0	\$4,039	
B10002		Dulzura Conduit Flume 15	\$40,000		\$0	\$590	
B10003		Dulzura Conduit Flume 22	\$1,150,000	\$1,000,000	\$44,948	\$919,701	91.97%
B11024		La Jolla Country Club Reservoir	\$4,447,000		\$0	\$34,851	

B11070	La Jolla View Reservoir	\$9,670,000		\$0	\$0	
ABM00001	Groundwater Asset Development Program					
B00167	San Pasqual Brackish Grdwr Desalination	\$85,448,400	\$13,981	\$13,981	\$0	
B00168	Groundwater Pilot Production Wells	\$8,165,621	\$100,000	\$282,298	\$301,263	301.26%
B00169	San Vicente Groundwater Well	\$388,794		\$5,529	\$9,061	
B11065	Chollas USGS Monitoring Wells	\$1,210,000		\$1,090,000	\$3,259	
B11066	San Pasqual USGS Monitoring Wells	\$742,000		\$666,000	\$0	
AHC00001	Reclaimed Water Extension					
B00004	Westview Parkway Recycled Water Connections	\$78,288		\$9,772	\$2,047	
B00140	Camino Del Sur Recycled Water Connection	(See note 2)		\$0	\$0	
B10086	Compass Point RW Connection	\$71,682		\$0	\$8,949	
B10143	Capricorn Way RW Connection	\$48,460		\$0	\$36,327	
AHC00002	North City Reclamation System					
B00158	Carmel Valley	\$3,805,170	\$2,723,906	\$523,058	\$1,948,744	71.54%
B00160	Los Penasquitos Canyon / Camino Ruiz RW Pipeline	\$6,370,755	\$80,000	\$69,517	\$138,614	173.27%
B00161	Pacific Highlands Ranch Recycled Water Pipeline	\$1,448,345	\$10,000	\$1,213,211	\$5,005	50.05%
B00164	Black Mountain Villages (North Villages at Del Sur RW Lines PA Agreement)	\$360,749		\$83,845	\$0	
B00165	Santa Luz Participation Agreement / North City	\$5,931,882		\$501,095	\$0	
B10200	Camino Del Sur Pipeline - North of SRS56	\$992,500		\$124,058	\$77,669	
AHC00003	Reclaimed Water Retrofit					
B00145	Scripps Poway Parkway MAD Phase 3	\$198,160		\$0	\$46,459	
B00149	Westview Community Park	\$165,000		\$0	\$1,866	
B00150	Park Village MAD Recycled Water Retrofit	\$150,000		\$0	\$965	
B00153	Eastgate Technology Park MAD	\$134,280		\$0	\$11,000	
B00154	NE Mira Mesa Subarea of Mira Mesa	\$207,815		\$2,500	\$152,932	
B11003	Penasquitos East MAD	\$25,000		\$0	\$17,288	
B11099	Cypress Canyon Rd. MAD PH2	\$53,000		\$50,000	\$244	
AKA00001	Corrosion Control					
AKA00002	Pressure Reduction Facility Upgrades					
AKB00002	Freeway Relocation					
B00010	Caltrans - I905	\$344,076		\$53,461	\$124,867	
B00011	Caltrans - El Monte -Rte 67	\$118,000		\$0	\$0	
B00013	Ct - Carroll Cnyn Br-I15 14"" 16"" Recl Wtr	\$1,094,000		\$0	\$16,205	

B00014	CT-Carroll Cnyn Br-I15 16" Potable Wtr	\$1,892,000		\$0	\$10,987	
B10199	Caltrans- Hillery Dr. Water Pipeline Relocation Pr	(See note 1)	\$50,000	\$0	\$5,368	10.74%
AKB00003	Water Main Replacements					
B00018	Sewer and Water Group 616	\$5,511,854	\$187,554	\$0	\$223,535	119.18%
B00020	Water Group 532	\$5,297,561	\$1,108,968	\$149,925	\$1,123,399	101.30%
B00021	Water Group 533	\$3,502,702	\$600,000	\$229,189	\$450,940	75.16%
B00023	Harbor Island Water Improvements	\$1,450,240		\$0	\$439	
B00024	Group 3011-Sewer & Water Group 648	\$1,175,445	\$895,392	\$102,600	\$860,572	96.11%
B00025	Group 3011-Sewer & Water Group 650	\$2,341,721	\$353,830	\$18,944	\$227,840	64.39%
B00026	Group 3011-Water Group 651	\$2,781,064	\$1,087,818	\$180,350	\$1,112,783	102.30%
B00027	Group 3001-Water Group 668	\$1,211,743		\$0	\$25	
B00028	Sewer & Water Group 676 (W)	\$1,575,800	\$3,500	\$0	\$829	23.69%
B00030	Sewer & Water Group 684A	\$1,089,678	\$54,585	\$0	\$6,993	12.81%
B00031	Group Job 525B	\$4,427,959	\$222,145	\$2,499,692	\$205,526	92.52%
B00032	Water Group Job 525C	\$4,889,745	\$142	\$0	\$5,227	3673.78%
B00033	Water Group 464B	\$1,752,034	\$64,207	\$0	\$5,935	9.24%
B00035	Sewer & Water Group 694	\$1,438,490		\$0	\$27,483	
B00036	Group Job 693 - Northpark	\$271,142	\$2,119	\$0	\$59,040	2786.65%
B00037	Water Group 927	\$1,329,668		\$545	\$10,356	
B00038	Water Group 705 (Group 3000)	\$1,238,227	\$43,880	\$38,896	\$71,192	162.24%
B00039	Sewer & Water Group 701	\$326,720	\$11,800	\$0	\$27,370	231.96%
B00040	Group 3011-Talmadge Water Group 703A	\$1,894,977	\$169,747	\$35,571	\$209,022	123.14%
B00041	Water Group 540A (Group 3002)	\$2,496,643		\$0	\$303	
B00042	La Jolla Group Job 541	\$3,106,062	\$260,150	\$5,423	\$164,066	63.07%
B00044	Group Job 711W	\$1,045,229	\$2,883	\$0	\$2,390	82.90%
B00045	Group 3010 - Water Group 717	\$1,328,242	\$247,883	\$55,551	\$149,584	60.34%
B00046	Group Job 544	\$2,625,066	\$1,952,000	\$236,244	\$1,181,182	60.51%
B00047	Group Job 546	\$2,977,577	\$9,872	\$0	\$5,419	54.89%
B00048	Water Group 550	\$2,852,184	\$10,000	\$0	\$8,508	85.08%
B00049	Water Group 549	\$2,784,271	\$14,924	\$0	\$5,153	34.53%
B00050	Group Job 723	\$544,633	\$19,150	\$0	\$28,107	146.77%

B00052	Water Group 644	\$440,009		\$0	\$0	
B00053	Design/Build 554 - Water Group 901	\$3,811,767	\$29,960	\$0	\$95,126	317.51%
B00054	Group 3001 - Water Group 726	\$2,228,772		\$0	\$182	
B00056	Water Group Job 728	\$675,159	\$303,099	\$89,837	\$324,338	107.01%
B00057	Water Group Job 730	\$1,264,336	\$703,312	\$198,469	\$450,627	64.07%
B00058	Water Group Job 731	\$1,434,890	\$153,343	\$25,530	\$16,759	10.93%
B00059	Water Group Job 732	\$628,167	\$68,297	\$0	\$19,394	28.40%
B00062	Water Group 740	\$469,447	\$32,237	\$380,000	\$46,457	144.11%
B00064	Water Group 665	\$2,037,168	\$670,000	\$61,630	\$772,603	115.31%
B00066	Water Group 910	\$5,108,141	\$113,259	\$3,447,254	\$155,397	137.21%
B00067	Water Group 746A	\$289,375	\$28,906	\$0	\$36,536	126.40%
B00068	Sewer & Water Group 747 (W)	\$2,660,492	\$258,566	\$28,961	\$300,737	116.31%
B00069	Water Group 749A (part of Group 3001)			\$0	\$228	
B00071	Water Group 753	\$1,406,302	\$45,283	\$0	\$16,586	36.63%
B00072	Sewer & Water GJ 754	\$342,673	\$203,039	\$83,524	\$23,371	11.51%
B00073	Group 3010 - Water Group 718A	\$1,994,885	\$158,880	\$0	\$212,675	133.86%
B00074	Sewer & Water Group 758	\$124,028	\$1,614	\$0	\$37,248	2307.79%
B00075	Sewer & Water Group Job 759	\$529,552	\$258,449	\$115,559	\$255,008	98.67%
B00077	Group 3013 - Water Group 764	\$1,552,579	\$827,960	\$186,504	\$742,959	89.73%
B00078	Water Group 911	\$2,018,953	\$1,273,514	\$109,939	\$1,335,689	104.88%
B00080	Sewer & Water GJ 761	\$913,710	\$58,575	\$0	\$61,108	104.32%
B00081	Sewer & Water Group Job 685	\$1,060,245	\$97,673	\$0	\$46,871	47.99%
B00082	Sewer & Water Group 768	\$1,414,183	\$143,331	\$628,299	\$171,261	119.49%
B00083	Sewer & Water Group 689 (W)	\$1,230,191	\$230,335	\$52,921	\$149,750	65.01%
B00084	Group 3013 - Water Group 764A	\$1,185,495	\$587,651	\$568,567	\$226,679	38.57%
B00085	Sewer & Water GJ 773	\$1,460,358	\$967,000	\$244,525	\$810,161	83.78%
B00086	Sewer & Water Group 789	\$5,625,704	\$152,207	\$2,981,002	\$85,897	56.43%
B00087	43rd St. & National Ave. Alignment	\$853,309	\$475,000	\$275,097	\$225,433	47.46%
B00088	Water Group 772	\$339,861	\$88,743	\$430	\$140,226	158.01%
B00089	Water Group 785	\$2,683,191	\$135,377	\$0	\$220,280	162.72%
B00090	Sewer & Water Group 796	\$490,638	\$5,750	\$0	\$101	1.75%
B00091	Sewer & Water GJ 774	\$978,624	\$73,251	\$0	\$39,756	54.27%

B00092	Sewer & Water Group Job 780	\$1,054,000	\$18,674	\$279,680	\$44,702	239.38%
B00093	Sewer & Water Group Job 781	\$1,914,199	\$31,680	\$873,894	\$91,038	287.37%
B00094	Group 3011 - Water Group 807	\$1,608,254	\$215,000	\$99,524	\$182,255	84.77%
B00095	Manning Canyon	\$1,103,278	\$79,193	\$0	\$2,554	3.23%
B00096	Sewer & Water Group 785 Canyon	\$776,392	\$116,234	\$338,349	\$54,705	47.06%
B00097	Sewer & Water Group 779	\$736,282	\$44,043	\$0	\$103,774	235.62%
B00098	Group 3013 - Water Group 821	\$1,450,039	\$614,824	\$196,801	\$854,541	138.99%
B00099	Sewer & Water Group 770	\$735,159	\$48,000	\$0	\$33,692	70.19%
B00100	Sewer & Water Group 792	\$2,262,119	\$57,602	\$0	\$68,054	118.15%
B00101	Group 3011 - Water Group 806	\$1,128,843	\$140,000	\$50,758	\$105,066	75.05%
B00102	Sewer & Water Group 809	\$2,646,739	\$103,261	\$35,071	\$164,292	159.10%
B00103	Sewer & Water Group 822	\$1,321,592	\$62,750	\$733,082	\$79,174	126.17%
B00104	Sewer & Water Group 787 Canyon	\$9,531,923	\$216,000	\$0	(\$677,583)	313.70%
B00105	Sewer & Water Group 799	\$4,571,361	\$117,000	\$3,067	\$237,602	203.08%
B00106	Sewer & Water Group 788	\$477,223	\$19,500	\$0	\$32,671	167.54%
B00107	Famosa Accelerated Sewer & Water	\$3,490,634	\$1,051,972	\$125,855	\$965,500	91.78%
B00108	Sewer & Water Group 814	\$122,741	\$2,679	\$0	\$52	
B00110	Sewer & Water Group 820	\$1,037,165	\$91,675	\$0	\$50,513	55.10%
B00111	Water Group 793	\$4,901,756	\$1,943,076	\$386,886	\$2,408,065	123.93%
B00112	Sewer & Water Group 683A (W)	\$763,668	\$45,000	\$3,217	\$98,616	219.15%
B00114	Sewer & Water Group 687B	\$758,338	\$65,000	\$0	\$9,235	14.21%
B00115	Design/Build 554 - Water Group 902	\$3,975,735	\$36,988	\$0	\$154,368	417.35%
B00116	Design/Build 555 - Water Group 903	\$3,928,451	\$35,000	\$0	\$204,675	584.78%
B00117	Design/Build 555 - Water Group 904	\$2,990,022	\$18,000	\$0	\$4,576	25.42%
B00118	Design/Build 555 - Water Group 905	\$2,555,852	\$58,071	\$0	\$556	0.96%
B00119	PB CI Water Replacement	\$6,982,182		\$0	\$198	
B00120	Water Group 907 CI	\$420,351	\$44,259	\$0	\$70,875	160.13%
B00121	Water Group 908 CI	\$431,727	\$64,000	\$0	\$91,461	142.91%
B00122	Water Group 906	\$2,435,712	\$434,911	\$1,001,155	\$559,128	128.56%
B00123	Water Group 909 CI Phase I	\$2,551,170	\$1,288,610	\$737,625	\$1,337,935	103.83%
B00124	Water Group 909 CI Phase II	\$2,470,268	\$1,269,611	\$520,817	\$983,043	77.43%
B00125	Water Group 914 CI (PB)	\$6,038,746	\$168,306	\$14,985	\$249,125	148.02%

B00130	Water Group 919 CI	\$3,245,232	\$125,074	\$0	\$187,779	150.13%
B00131	Water Group 525 E	\$2,583,375	\$182,273	\$0	\$4,045	2.22%
B00132	Water Group 829	\$463,307	\$13,312	\$0	\$5,406	40.61%
B00133	Participation Agrmnt - Dsgn Lindo Paseo	\$320,000		\$0	\$151,382	
B00170	Crown Point TS - Wtr Main Replacement	\$199,500	\$10,824	\$0	\$2,707	25.01%
B10153	Water Group 787M1	\$789,789	\$483,722	\$384,139	\$30,570	6.32%
B10154	Water Group 787M2	\$649,271	\$439,094	\$354,196	\$87,607	19.95%
B10155	Water Group 787M3	\$544,508	\$423,000	\$205,575	\$122,505	28.96%
B10156	Water Group 933M	\$394,016	\$67,531	\$12,889	\$260,157	385.24%
B10170	Water Group Job 920	\$2,841,310	\$77,851	\$1,632,279	\$216,329	277.87%
B10171	Water Group Job 921	\$3,122,000	\$100,645	\$2,327,729	\$117,669	116.91%
B10172	Water Group Job 922	\$3,918,075	\$70,400	\$21,495	\$70,837	100.62%
B10173	Water Group Job 923	\$5,632,170	\$218,408	\$40,750	\$295,184	135.15%
B10174	Water Group Job 924	\$5,775,369	\$350,000	\$3,944,637	\$89,044	25.44%
B10175	Water Group Job 925	\$3,948,135	\$154,196	\$20,850	\$238,208	154.48%
B10176	Water Group Job 926	\$7,120,332	\$219,979	\$21,902	\$157,792	71.73%
B10187	Sewer & Water Group 695 (Water)	\$2,964,650		\$0	\$8,548	
B10188	Water Group Job 928	\$2,322,924	\$196,018	\$0	\$164,089	83.71%
B10189	Water and Sewer Group Job 929 (W)	\$3,710,443	\$243,424	\$0	\$199,308	81.88%
B10190	Water and Sewer Group Job 930 (W)	\$3,284,581	\$317,843	\$0	\$281,518	88.57%
B10191	Water Group Job 931	\$4,691,923	\$179,961	\$0	\$28,172	15.65%
B11004	Water Group Job 934	\$1,585,170		\$11,771	\$49,231	
B11005	Water Group Job 935	\$1,564,977		\$6,261	\$101,294	
B11006	Water Group Job 936	\$4,815,140		\$12,024	\$81,501	
B11007	Water Group Job 937	\$1,925,795		\$0	\$16,426	
B11034	Water Group Job 938	\$2,418,100		\$0	\$72,040	
B11035	Water Group Job 939	\$2,500,000		\$0	\$2,137	
B11036	Water Group Job 940	\$5,160,250		\$0	\$3,137	
B11037	Water Group Job 941	\$1,309,750		\$0	\$5,078	
B11038	Water Group Job 942	\$2,883,756		\$0	\$10,667	
B11039	Water Group Job 943	\$1,505,476		\$0	\$8,198	
B11040	Water Group Job 944	\$1,740,000		\$0	\$5,361	
B11041	Water Group Job 945	\$2,380,500		\$0	\$72,245	

B11042	Water Group Job 946	\$1,337,648		\$0	\$9,526	
B11043	Water Group Job 947	\$1,757,094		\$0	\$63,944	
B11044	Water Group Job 948	\$1,943,698		\$0	\$6,537	
B11045	Water Group Job 949	\$11,780,184		\$0	\$136,409	
B11046	Water Group Job 950	\$5,167,375		\$0	\$4,381	
B11047	Water Group Job 951	\$1,713,686		\$0	\$1,075	
B11048	Water Group Job 952	\$2,585,834		\$0	\$3,589	
B11049	Water Group Job 953	\$1,622,000		\$0	\$62,658	
B11101	Juan Street - Water Pipeline Replacement	\$1,100,000		\$87,599	\$18,389	
B11137	Water Group Job 958			\$0	\$3,074	
B11138	Water Group Job 959			\$0	\$1,377	
AKB00004	Seismic Upgrades					
B00135	Fault Crossing Retrofit to Large Pipelines	\$2,108,101		\$0	\$1,921	
B00136	Landslide Liquefaction Pipelines Mitigation	\$3,557,772		\$0	\$1,733	
AKB00005	Meter Boxes					
B00015	Water Meter Box Replacements - Group I	\$227,075		\$0	\$0	
B00016	Water Meter Box Replacements - Group II	\$239,387		\$0	\$4,497	
B00017	Water Meter Box Replacements - Group III	\$192,527		\$0	\$6,345	
S00003	Torrey Pines Road/La Jolla Blvd Main Replacement	\$3,940,411		\$0	\$0	
S00004	Torrey Pines/La Jolla Blvd Phase 3B	\$2,991,964	\$150,000	\$13,769	\$248,800	165.87%
S00018	South Bay Reclaimed Water System	\$1,349,134		\$0	\$0	
S00073	SBRWS - Mag Meter Assembly Project	\$232,132		\$18,600	\$14,892	
S00019	Harbor Drive Pipeline	\$11,540,000	\$420,000	\$200,513	\$514,584	122.52%
	Alvarado Water Treatment Plant Upgrade & Expansion					
S00021	Alvarado Water Treatment Plant Upgrade & Expansion	\$56,311,686		\$0	\$0	
S00022	Alvarado WTP-Ozone Improvements (PH IV)	\$61,166,435	\$3,294,504	\$2,128,553	\$4,079,714	123.83%
S00023	Alvarado WTP - Rehab Flocc/Sed Basins PH 3	\$19,588,139	\$4,335,318	\$1,522,816	\$3,479,499	80.26%
	Miramar Water Treatment Plant Upgrade & Expansion					
S00024	Miramar Water Treatment Plant Upgrade & Expansion	\$117,465,246		\$0	\$0	
S00026	San Diego 24 Flow Control Facility	\$3,175,000		\$0	\$13,774	
S00027	Miramar WTP Flocculation & Sedimentation Basin	\$61,378,310	\$419,299	\$0	\$645,474	153.94%
S00028	Miramar WTP Landscape & Site Improvement	\$2,200,000	\$108,756	\$0	\$108,445	99.71%
S00029	Miramar WTP Ozone Equipment/Installation	\$25,298,662	\$1,160,110	\$0	\$638,100	55.00%

	Otay Water Treatment Plant Upgrade & Expansion					
S00030	Otay Water Treatment Plant Upgrade & Expansion	\$26,702,441	\$5,289,620	\$69,733	\$1,020,868	19.30%
S00031	Otay Water Trtmnt Plant Upgrade & Exp - Ph. II	\$14,878,498	\$2,543,362	\$17,199	\$1,252,532	49.25%
S11059	Otay Water Treatment Plant Concrete Work	\$1,040,000		\$0	\$7,239	
S00032	Otay Second Pipeline Improvements	\$25,468,725		\$0	\$0	
S00035	Otay 2nd - Cast Iron Replacement	\$15,691,628	\$165,000	\$231,300	\$117,307	71.10%
S00037	Otay 2nd - North Encanto Replacement	\$7,473,776	\$276,418	\$0	\$4,443	1.61%
S11109	Otay 2nd Pipeline -Emergency Main Repairs	\$500,000		\$235,945	\$52,678	
S00038	San Diego 17 Flow Control Facility	\$18,510,000		\$0	\$0	
S00039	Barrett Reservoir Outlet Tower Upgrade	\$2,750,964		\$0	\$0	
S00041	Morena Reservoir Outlet Tower Upgrade	\$5,680,000		\$0	\$13,903	
S00043	Rancho Penasquitos Water Pump Station #2	\$13,299,820	\$665,000	\$0	\$195,245	29.36%
S00044	Lower Otay Reservoir Emergency Outlet Improvements	\$2,000,000	\$121,658	\$0	\$95,530	78.52%
S00045	CIP Program Management	\$4,160,000		\$5,988	\$65,493	
	WDSU - Security Operations Center					
S00049	WDSU - Security Operations Center	\$237,222		\$0	\$0	
S00050	Water Department Security Upgrades	\$7,969,846	\$260,000	\$0	\$7,458	2.87%
S00055	WDSU - Reservoirs & Dams	\$1,000,000	\$95,000	\$0	\$0	0.00%
S00056	WDSU - Enclosed Pump Stations	\$2,000,000	\$95,000	\$0	\$18	0.02%
S00058	WDSU - Tank/Standpipe Reservoirs	\$1,200,000	\$118,000	\$0	\$0	0.00%
S00059	WDSU - Pipelines (30" & Larger)	\$20,000		\$0	\$149	
S11104	WDSU - SECURITY OPERATIONS CENTER PH. II	\$550,000		\$0	\$512,911	
S11105	WDSU - Enclosed Pumps - PH. II	\$2,920,000		\$84,151	\$218,184	
S11106	WDSU - Reservoirs & Dams - PH. II	\$1,000,000		\$0	\$12,261	
S11107	WDSU - Water Tanks & Standpipes - PH. II	\$1,200,000		\$0	\$34,170	
S00068	Proctor Valley Off-Highway Vehicle Barrier	\$425,754		\$0	\$2,771	
S00075	Alvarado WTP - Fluoridation Facilities	\$1,163,959	\$904,282	\$18,503	\$813,970	90.01%
S00076	Miramar WTP - Fluoridation Facilities	\$1,050,824	\$814,478	\$9,463	\$716,349	87.95%
S00077	Otay WTP - Fluoridation Facilities	\$1,012,233	\$822,724	\$59,522	\$680,009	82.65%
S00083	Miramar Pipeline Monitoring & Reinspection	\$1,487,636	\$1,099,000	(\$10,984)	\$59,132	5.38%
S10004	Water Group Job 790	\$8,283,783	\$4,480,453	\$843,787	\$4,790,908	106.93%
S10005	El Capitan Pipeline #2	\$716,000	\$38,818	\$0	\$87,278	224.84%
S10008	El Monte Pipeline #2	TBD		(\$11,574)	\$11,574	

S10010	Recycled Water System Upgrades	\$950,000		\$0	\$9,201	
S10011	Kearny Mesa Pipeline Upgrade	\$43,328,391		(\$3,197)	\$3,197	
S10013	Barrett Flume Cover	\$6,092,340		\$0	\$1,116	
S10055	Lindbergh Field 16" Cast Iron Main Replacement	\$6,820,000	\$247,500	\$201,860	\$221,033	89.31%
S10123	Water Group Job 915 (3012)	\$16,012,271	\$3,660,284	\$1,255,905	\$5,190,856	141.82%
S10127	Advanced Water Treatment Demo Plant (IPR/RA)	\$7,200,000		\$2,221,555	\$4,806,622	
S11021	University Ave Pipeline Replacement	\$15,300,000		\$0	\$129,376	
S11022	Upas Street Pipeline Replacement	\$20,196,326		\$0	\$112,825	
S11023	MOC Building	\$3,000,000	\$100,000	\$0	\$0	0.00%
S11024	Miramar Clearwell Improvements	\$79,000,000		\$0	\$4,260	
S11025	Chollas Building	\$17,700,000	\$665,000	\$202,342	\$248,601	37.38%
S11026	Montezuma Pipeline/Mid-City Pipeline Phase II	\$11,400,000		\$0	\$215,111	
S11027	Otay 1st/2nd Pipeline Abandonment East of Highland	\$7,300,000		\$0	\$44,094	
S11100	CIS ERP Implementation	\$11,198,520		\$875	\$7,107,530	
S11108	Water Group 787			\$0	\$782,826	
O&M	El Monte Valve Replacement	\$227,000	\$344,635			
			\$65,149,915	\$41,639,330	\$69,059,192	

CIP EXPENDITURE TABLE – WASTEWATER

**Public Utilities - Wastewater Funds
Period 12**

Fund	Funded Prog.	Project Name	Total Project Cost	Original FY11 Projected Expenditures	FY11 Period 12 Encumbrances SAP (unaudited)	FY11 Period 12 Expenditures SAP (unaudited)	FY11 Proj. Exp vs. FY11 Actuals Period 12 %
Muni	ABP00001	Pump Station Restorations					
Muni	B00476	SPS 13 REHAB	\$445,000	\$10,000	\$110,000	\$27,458	275%
Muni	B00499	SEWER PUMP STATION #27- RESTORATION	\$6,907,545		\$36,731	\$0	
Muni	B00500	SKYLARK CNYN SWR PS	\$1,714,046	\$94,825	\$8,653	\$57,583	61%
Muni	B00502	SWR PS#18 PH II	\$2,754,387	\$3,187	\$0	\$611	19%
Muni	B00503	SEWER PUMP STATION #27 - PHASE 2	\$2,738,632	\$402,133	\$1,460,209	\$121,332	30%
Muni	B00523	MISSION BAY SEWAGE INTERCEPT SYST	1,482,295		\$1,000	\$13,153	
Muni	B10177	Sewer Pump Station 77B VFDs			\$0	(\$0)	
Muni	ABP00003	Pump Station 64,65, Penasquitos, E Mission Gorge					
Muni	B00306	PS 65 CAPACITY UPGRADE (AA 419270)	\$3,911,508	\$300,000	\$271,174	\$375,545	125%
Muni	B10224	Sewer Pump Station 64 Force Main Repair	\$500,000		\$0	\$901,601	
Muni	AJA00001	Sewer Main Replacements					
Muni	B00330	Sewer & Water Group 676 (PN2) (03)	\$2,376,152	\$3,500	\$0	\$0	0%
Muni	B00322	GROUP 3011-SEWER & WATER 648	\$2,647,619	\$474,240	\$31,725	\$416,730	88%
Muni	B00323	GROUP 3011-SEWER 649	\$1,223,926	\$188,098	\$27,548	\$92,279	49%
Muni	B00324	GROUP 3011-SEWER & WATER 650	\$3,290,197	\$570,094	\$13,521	\$378,953	66%
Muni	B00326	SEWER GROUP 665	\$2,401,866	\$1,241,151	\$0	\$1,574,541	127%
Muni	B00327	SEWER GROUP 644	\$2,659,147	\$1,255,000	\$228,586	\$1,279,206	102%
Muni	B00328	Sewer Group 668 Ocean Beach South Master Plan	\$2,215,025	\$1,336,827	\$186,828	\$1,367,570	102%
Muni	B00329	SEWER GROUP 682	\$3,616,158	\$1,480,990	\$1,476,127	\$814,967	55%

Muni	B00331	SEWER GROUP 678	\$1,112,220		\$0	\$6,763	
Muni	B00332	SEWER & WATER GRP 684A	\$4,530,146	\$22,369	\$0	\$66,203	296%
Muni	B00333	CITY HEIGHTS: GRP 685	\$5,179,341	\$258,431	\$0	\$89,521	35%
Muni	B00334	SEWER & WATER GROUP 689 (S)	\$4,623,427	\$790,723	\$54,336	\$793,271	100%
Muni	B00335	SEWER & WATER GROUP 683A (S)	\$4,018,699	\$14,538	\$0	\$95,219	655%
Muni	B00336	SEWER GROUP JOB 726	\$2,941,262	\$1,544,077	\$237,913	\$1,856,230	120%
Muni	B00337	SEWER GROUP JOB 727	\$3,078,742		\$0	\$10,385	
Muni	B00338	SEWER GROUP JOB 728	\$3,581,117	\$1,381,810	\$93,603	\$1,684,670	122%
Muni	B00339	SEWER GROUP JOB 729	\$2,245,017	\$1,456,927	\$138,412	\$1,473,222	101%
Muni	B00340	SEWER GROUP JOB 730	\$1,786,063	\$917,653	\$237,912	\$757,096	83%
Muni	B00341	SEWER GROUP JOB 731	\$1,927,893	\$207,186	\$171,980	\$25,708	12%
Muni	B00342	SEWER GROUP JOB 732	\$1,378,639	\$145,693	\$0	\$80,870	56%
Muni	B00343	SEWER GROUP JOB 734	\$1,317,661	\$652,430	\$61,644	\$703,323	108%
Muni	B00344	SEWER & WATER GRP JOB 544	\$1,336,275	\$49,000	\$97,086	\$115,562	236%
Muni	B00345	SEWER GROUP 735	\$2,441,913		\$0	\$1,406	
Muni	B00346	Sewer Group 697A	\$2,286,693	\$68,628	\$0	\$0	
Muni	B00348	GROUP JOB 740	\$2,750,341	\$111,682	\$560,138	\$116,227	104%
Muni	B00349	GROUP JOB 739	\$1,379,975	\$1,022,982	\$227,273	\$688,597	67%
Muni	B00352	SEWER GROUP 742	\$2,310,160	\$1,050,878	\$0	\$982,423	93%
Muni	B00353	SEWER GROUP 743	\$1,363,300	\$18,600	\$0	\$4,073	22%
Muni	B00354	SEWER GROUP 745	\$4,429,239	\$2,390,562	\$288,034	\$2,200,221	92%
Muni	B00355	SEWER & WATER GROUP 747 (S)	\$2,777,411	\$212,661	\$0	\$89,192	42%
Muni	B00356	SEWER GROUP 748	\$1,883,000	\$308,250	\$801,134	\$789,321	256%
Muni	B00358	SEWER GROUP JOB 738	\$1,806,553	\$69,862	\$982,000	\$131,152	188%
Muni	B00359	SEWER GROUP 750	\$2,472,682	\$1,213,000	\$909,797	\$561,010	46%
Muni	B00360	Water & Sewer Group Job 752	\$4,773,547	\$156,469	\$0	\$219,162	140%
Muni	B00361	SEWER GJ 753	\$3,428,694	\$69,568	\$1,221,000	\$101,078	145%
Muni	B00362	WATER & SEWER GJ 754	\$3,560,417	\$2,557,749	\$2,020,239	\$706,207	28%
Muni	B00363	SEWER GROUP 756	\$3,169,885	\$82,000	\$2,149,698	\$71,195	87%
Muni	B00364	SEWER REPL GJ 757	\$2,401,313		\$0	\$127	
Muni	B00365	SEWER & WATER GROUP 758	\$3,445,600	\$44,656	\$840	\$214,241	480%
Muni	B00366	SEWER & WATER GROUP JOB 759	\$781,731	\$463,415	\$105,643	\$331,363	72%

Muni	B00368	SEWER GROUP 764	\$5,838,000		\$0	\$1,627	
Muni	B00370	SEWER GROUP 767	\$4,377,500	\$100,810	\$0	\$221,870	220%
Muni	B00371	SEWER & WATER GROUP 768	\$2,615,442	\$567,461	\$1,439,158	\$342,669	60%
Muni	B00372	SEWER & WATER GROUP JOB 761	\$3,344,230	\$124,585	\$0	\$102,889	83%
Muni	B00373	GROUP 3015-SEWER GROUP 762	\$2,698,260	\$547,880	\$1,353,385	\$368,634	67%
Muni	B00374	SEWER GROUP JOB 763	\$4,620,550		\$0	\$2,744	
Muni	B00375	SEWER & WATER GROUP 766	\$2,218,592	\$156,831	\$0	\$126,893	81%
Muni	B00377	SEWER GROUP JOB 772	\$1,942,943	\$1,246,624	\$22,438	\$1,791,427	144%
Muni	B00378	SEWER GROUP JOB 784	\$3,528,809	\$24,779	\$0	\$225,964	912%
Muni	B00379	SEWER GROUP JOB 788	\$4,421,026	\$87,000	\$0	\$73,684	85%
Muni	B00380	SEWER GROUP 764A	\$3,789,479		\$0	\$591	
Muni	B00381	SEWER & WATER GROUP 789	\$2,127,642	\$85,360	\$1,622,295	\$123,418	145%
Muni	B00382	SEWER GROUP 820	\$3,558,665	\$308,704	\$8,160	\$243,275	79%
Muni	B00384	43RD ST & NAT AVE REALIG	\$642,933	\$346,350	\$46,695	\$367,108	106%
Muni	B00385	SEWER & WATER GROUP JOB 774	\$3,524,376	\$94,220	\$0	\$143,448	152%
Muni	B00386	SEWER & WATER GROUP JOB 775			\$0	\$1,311	
Muni	B00388	SEWER & WATER GROUP JOB 778	\$4,010,183		\$0	\$1,407	
Muni	B00389	Sewer Group Job 780	\$4,880,210	\$50,000	\$2,181,685	\$90,883	182%
Muni	B00390	Sewer Group Job 781	\$4,210,025	\$52,320	\$2,778,488	\$246,407	471%
Muni	B00393	SEWER & WATER GJ 787	\$4,643,452	\$119,828	\$0	\$129,448	108%
Muni	B00394	SEWER GROUP 793	\$1,731,663		\$0	\$913	
Muni	B00395	SEWER GJ 794	\$4,091,924	\$89,642	\$0	\$896	
Muni	B00396	SEWER GJ 795	\$455,460		\$0	\$5,763	
Muni	B00397	SEWER & WATER GJ 796	\$4,043,202	\$5,750	\$0	\$2,318	40%
Muni	B00401	"GROUP JOB 785 ""CANYON""	\$954,434	\$175,110	\$375,523	\$143,986	82%
Muni	B00403	Sewer Group Job 807	\$5,375,708	\$94,423	\$0	\$0	
Muni	B00404	GROUP 3015-SEWER GROUP 805	\$3,250,155	\$632,255	\$760,931	\$1,135,679	180%
Muni	B00405	SEWER & WATER GROUP 792	\$4,376,113	\$99,762	\$0	\$124,099	124%
Muni	B00410	SEWER GJ 770	\$2,232,420	\$96,000	\$0	\$60,698	63%
Muni	B00411	SEWER GROUP 739A	\$1,128,861	\$90,000	\$0	\$69,379	77%
Muni	B00412	SEWER GROUP 808	\$1,714,216	\$58,151	\$0	\$66,622	115%
Muni	B00413	SEWER GROUP 821	\$3,366,000		\$0	\$1,715	

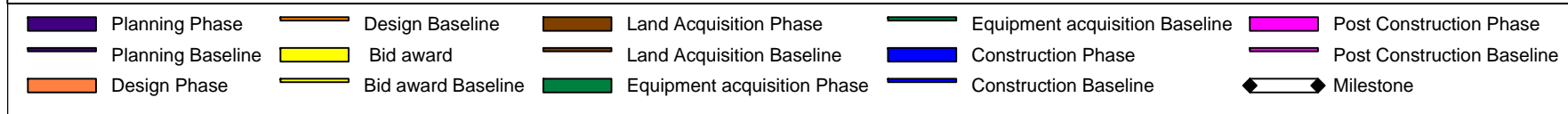
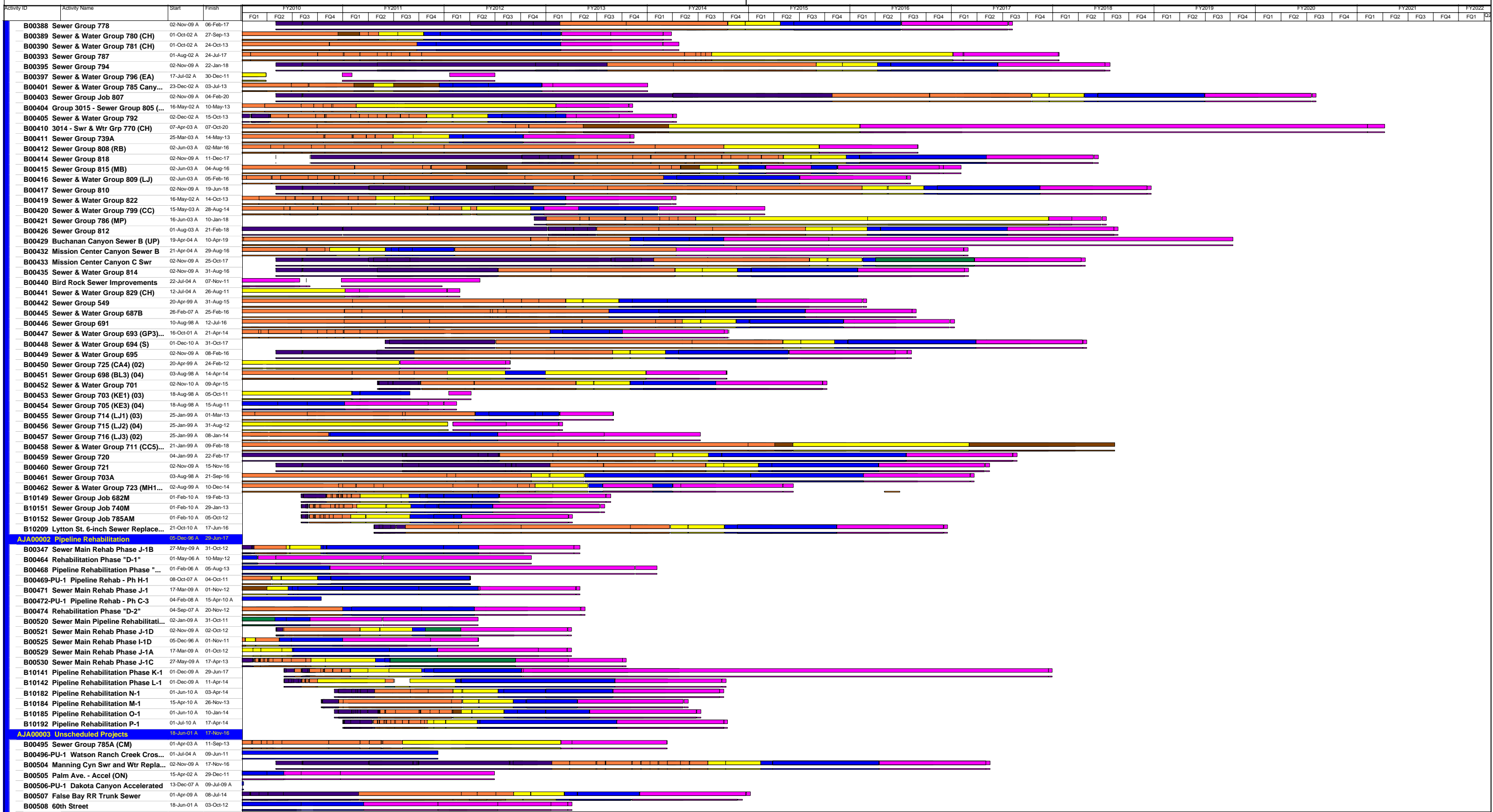
Muni	B00415	SEWER GJ 815	\$1,975,082	\$16,893	\$0	\$43,990	260%
Muni	B00416	Sewer & Water Group Job 809	\$4,353,747	\$325,560	\$152,399	\$228,222	70%
Muni	B00417	Sewer Group 810	\$4,145,949	\$58,805	\$0	\$0	
Muni	B00418	SEWER "CANYON" GROUP 810			\$0	\$725	
Muni	B00419	SEWER & WATER GROUP 822	\$2,372,517	\$62,725	\$1,365,688	\$235,311	375%
Muni	B00420	SEWER & WATER GROUP JOB 799	\$1,917,950	\$92,000	\$2,825	\$176,565	192%
Muni	B00423	SEWER GROUP JOB 787 CANYON			(\$60,692)	\$0	
Muni	B00426	Sewer Group 812	\$4,988,826	\$84,083	\$0	\$0	
Muni	B00429	BUCHANAN CANYON SEWER B	\$3,449,569	\$124,000	\$13,125	\$122,336	99%
Muni	B00432	Mission Center Canyon B Sewer Main Replacement	\$1,032,494	\$404,152	\$102,624	\$425,199	105%
Muni	B00433	Mission Center Canyon C Smr	\$3,153,159	\$54,163	\$0	\$0	
Muni	B00435	Sewer & Water Group 814	\$2,952,429	\$71,376	\$0	\$597	
Muni	B00440	BIRD ROCK SEWER IMPROVEMENTS	\$1,458,902		\$0	\$0	
Muni	B00441	Sewer & Water Group Job 829	\$1,223,600	\$37,630	\$0	\$40,877	109%
Muni	B00442	SEWER GROUP 549	\$4,494,800	\$19,766	\$0	\$109,506	554%
Muni	B00445	WATER & SEWER GROUP 687B	\$6,748,442	\$289,530	\$0	\$23,292	8%
Muni	B00446	SEWER GROUP 691	\$2,868,339	\$84,000	\$6,268	\$81,502	97%
Muni	B00447	SEWER GROUP 693 SEWER MAIN REPLACEMENT	\$3,491,566	\$15,492	\$0	\$129,874	838%
Muni	B00448	SEWER GROUP 694 SEWER MAIN REPLACEMENT	\$3,795,800		\$0	\$32,079	
Muni	B00449	SEWER GROUP 695 SEWER MAIN REPLACEMENT	\$3,521,791	\$59,520	\$0	\$36,298	61%
Muni	B00450	SEWER GROUP 725 SEWER MAIN REPLACEMENT	\$2,763,858	\$302,093	\$0	\$365,129	121%
Muni	B00451	SEWER GROUP 698	\$7,925,000	\$620,000	\$481,349	\$234,190	38%
Muni	B00452	SEWER & WATER GROUP 701	\$3,209,020	\$99,577	\$0	\$2,286	
Muni	B00453	SEWER GROUP 703 SEWER MAIN REPLACEMENT	\$3,370,151	\$56,000	\$0	\$26,325	47%
Muni	B00454	SEWER GROUP 705	\$1,576,663	\$59,986	\$211,362	\$32,068	53%
Muni	B00455	SEWER GROUP 714	\$2,747,272	\$67,738	\$0	\$119,334	176%
Muni	B00456	SEWER GROUP 715	\$3,146,022	\$638,931	\$0	\$141,060	22%
Muni	B00457	Sewer Group 716	\$3,455,314	\$1,757,136	\$468,626	\$1,757,855	100%
Muni	B00458	CENTRE CITY GROUP JOB 711	\$839,155	\$3,390	\$0	\$421	12%
Muni	B00459	SEWER GROUP 720	\$4,584,963	\$22,131	\$0	\$1,737	8%
Muni	B00460	SEWER GROUP 721	\$5,070,451	\$86,854	\$0	\$22,934	26%

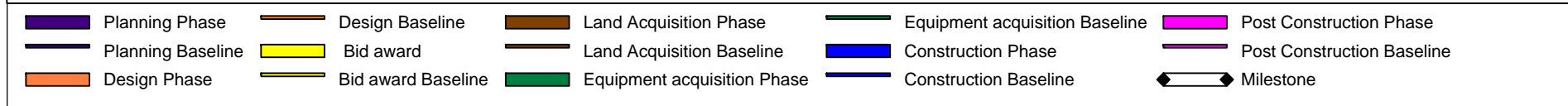
Muni	B00462	SEWER GROUP 723	\$3,118,050	\$74,400	\$0	\$140,108	188%
Muni	B10149	Sewer Group Job 682M	\$571,553	\$287,099	\$334,480	\$71,897	25%
Muni	B10151	Sewer Group Job 740M	\$316,280	\$190,643	\$181,542	\$48,498	25%
Muni	B10152	Sewer Group Job 785AM	\$414,244	\$367,000	\$202,987	\$85,159	23%
Muni	B10209	Lytton St. 6-inch Sewer Replacement	\$544,957	\$10,000	\$0	\$43,696	437%
Muni	B11019	SEWER GROUP JOB 830	\$2,953,500		\$0	\$11,645	
Muni	B11021	WATER AND SEWER GROUP JOB 929 (S)	\$760,100		\$0	\$45,396	
Muni	B11022	WATER AND SEWER GROUP JOB 930 (S)	\$1,745,010		\$0	\$49,942	
Muni	B11077	Sewer Group 767A	\$2,744,345		\$0	\$52,882	
Muni	B11110	Swan Street Sewer Main Replacement Project	\$166,000		\$0	\$0	
Muni	B11111	Tecolote Canyon 8-inch CI Sewer Main	\$424,000		\$0	\$0	
Muni	AJA00002	Pipeline Rehabilitation					
Muni	B00347	SEWER MAIN REHAB PH J-1B (AA 460500)	\$2,334,788	\$1,522,782	\$13,020	\$1,461,375	96%
Muni	B00464	PIPELINE REHAB PHASE D-1	\$4,899,203		\$0	\$12,796	
Muni	B00468	PIPELINE REHAB PH G-1	\$9,146,789	\$5,000	\$0	\$16,847	337%
Muni	B00469	PIPELINE REHAB PH H-1	\$6,585,361		\$757,493	\$1,267,719	
Muni	B00471	PIPELINE REHAB PH J-1	\$4,801,017	\$1,580,940	\$0	\$1,744,883	110%
Muni	B00474	PIPELINE REHAB PHASE D-2	\$1,676,073	\$1,192,431	\$78,862	\$1,512,705	127%
Muni	B00520	PIPELINE REHAB PHASE I-1 P1	\$800,000		\$0	\$0	
Muni	B00521	PIPELINE REHAB PHASE J-1D	\$6,215,351	\$3,871,250	\$4,170,567	\$438,550	11%
Muni	B00525	SEWER MAIN REHAB PH I-1D (AA 460500)	\$2,494,784	\$198,000	\$0	\$143,238	72%
Muni	B00529	SEWER MAIN REHAB PH J-1A (AA 460500)	\$3,676,270	\$1,580,000	\$0	\$1,558,657	99%
Muni	B00530	Sewer Main Rehabilitation Phase J-1C	\$4,135,853	\$1,698,502	\$1,261,122	\$2,212,318	130%
Muni	B10141	PIPELINE REHABILITATION K-I	\$4,135,630	\$2,628,000	\$2,459,780	\$128,194	5%
Muni	B10142	PIPELINE REHABILITATION L-I	\$4,597,250	\$469,404	\$3,858,524	\$106,736	23%
Muni	B10182	Pipeline Rehabilitation N-1	\$6,217,962	\$311,852	\$0	\$99,877	32%
Muni	B10184	Pipeline Rehabilitation M-1	\$4,565,000	\$597,172	\$0	\$125,852	21%
Muni	B10185	Pipeline Rehabilitation O-1	\$5,096,000	\$315,381	\$0	\$108,333	34%
Muni	B10192	Pipeline Rehabilitation P-1	\$6,522,316	\$336,083	\$0	\$154,500	46%
Muni	B11028	Pipeline Rehab - Phase D-2 (Laterals)	\$3,850,000		\$0	\$0	
Muni	B11029	Pipeline Rehabilitation - Phase G-2 (Laterals)	\$4,000,000		\$0	\$25,084	
Muni	B11030	Pipeline Rehabilitation - Phase I-2 (Laterals)	\$3,850,000		\$0	\$228	

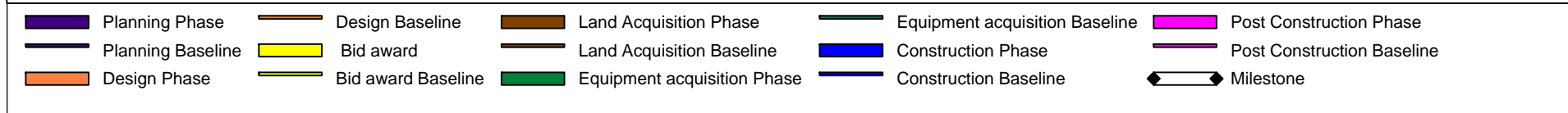
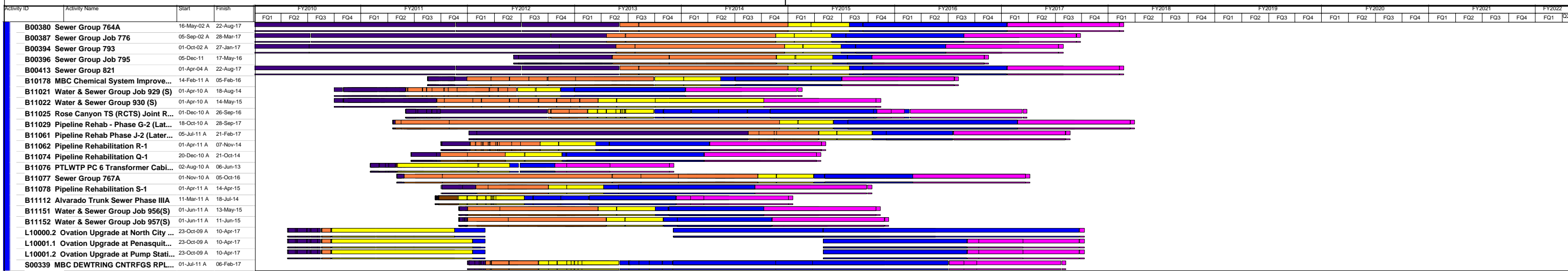
Muni	B11060	PIPELINE REHABILITATION - PHASE F-2 (LATERALS)	TBD		\$0	\$0	
Muni	B11061	PIPELINE REHABILITATION - PHASE J-2 (LATERALS)	TBD		\$0	\$0	
Muni	B11062	PIPELINE REHABILITATION R-1	\$5,710,400		\$0	\$27,296	
Muni	B11074	PIPELINE REHABILITATION Q-1	\$6,543,000		\$0	\$60,155	
Muni	B11078	PIPELINE REHABILITATION S-1	\$5,592,376		\$0	\$34,985	
Muni	B11120	PIPELINE REHABILITATION T-1	TBD		\$0	\$0	
Muni	AJA00003	Unscheduled Projects					
Muni	B00495	SEWER GROUP JOB 785A ACCELERATED	\$3,342,097	\$96,000	\$0	\$68,995	72%
Muni	B00496	WATSON RANCH CREEK CROSSING PIP	\$340,000		\$0	\$174,318	
Muni	B00504	Manning Canyon Accel TH	\$1,318,460	\$12,924	\$0	\$59	
Muni	B00505	Palm Ave. - Accel (ON)	\$2,903,026	\$886	\$0	\$0	
Muni	B00506	DAKOTA CANYON ACCELERATED	\$2,101,735		\$9,305	\$855	
Muni	B00507	FALSE BAY EMERGENCY	\$1,424,841	\$50,735	\$606	\$12,475	25%
Muni	B00508	60TH STREET ACCELERATED	\$2,059,734	\$63,000	\$0	\$82,738	131%
Muni	B00513	FAMOSA ACCELERATED SEWER & WATER	\$2,034,180	\$273,411	\$125,057	\$228,904	84%
Muni	AJB00001	Metropolitan Waste Water Department Trunk Sewers					
Muni	B00302	54TH & MARKET	\$360,291	\$249,441	\$0	\$266,476	107%
Muni	B00304	7TH & BROOKES ST. ACCEL.	\$1,465,568		\$0	\$2,210	
Muni	B00307	ALVARADO CHANNEL PIPE CROSSING ACCEL	\$723,255	\$299,765	\$52,814	\$298,431	100%
Muni	B00309	Swan Street Sewer Replacement	\$4,200,000	\$10,000	\$0	\$0	
Muni	B00310	OLD ROSE CYN TS RELOCATION	\$6,600,000	\$935,000	\$4,597	\$545,512	58%
Muni	B00311	CALTRANS/SR- 905 OTAY MESA TS	\$3,904,000		\$0	\$11,878	
Muni	B00478	Balboa Terrace Trunk Sewer	\$6,387,170	\$482,168	\$163,390	\$596,576	124%
Muni	B00479	Pacific Highway Trunk Sewer	\$6,202,262	\$628,994	\$3,647,737	\$104,821	17%
Muni	B00481	ALVARADO TRUNK SEWER PHIII	\$3,274,905	\$84,000	\$14,920	\$200,649	239%
Muni	B00482	CROWN PT TS	\$4,814,072	\$182,723	\$0	(\$609)	0%
Muni	B00483	PALM CITY TS	\$5,933,078	\$197,235	\$8,670	\$375,500	190%
Muni	B00484	PENASQUITOS VIEW TS	\$2,139,207	\$20,264	\$4,309	\$27,957	138%
Muni	B00486	Sunset Cliffs Trunk Sewer	\$4,056,505	\$3,730,691	\$1,412,032	\$1,686,833	45%
Muni	B00488	GRANTVILLE TS	\$4,359,131	\$165,880	\$5,244	\$199,692	120%
Muni	B00490	Penasquitos North Trunk Sewer	\$3,661,452	\$31,993	\$0	\$0	

Muni	B00510	QUINCY ST. & WILBUR AVE.	\$2,080,110	\$65,170	\$0	\$82,577	127%
Muni	B10180	W PTL Interceptor & PS 2 FM Siphon Repair	\$1,500,000	\$10,000	\$0	\$11,302	113%
Muni	B11112	Alvarado Trunk Sewer Phase IIIA	\$2,691,000		\$0	\$18,096	
Muni	B11025	ROSE CANYONE TRUNK SEWER (RCTS) JOINT REPAIR	\$6,233,000	\$10,000	\$0	\$23,059	231%
Muni	B11026	SEWER JUNCTION/DIVERSION STRUCTURE REHAB	\$700,000	\$10,000	\$0	\$0	
Muni	S00301	Otay Mesa Trunk Sewer	\$13,027,347		\$0	\$416	
Muni	S00302	South Mission Valley Trunk Sewer	\$14,953,182	\$6,911,036	\$948,035	\$8,300,816	120%
Muni	S00303	Pump Station Upgrades Group I North County	\$6,548,000	\$1,604,950	\$480,165	\$1,678,761	105%
Muni	S00304	PS Upgrades Group II Cnty Wide	\$4,195,000	\$2,184,243	\$2,991,498	\$400,710	18%
Muni	S00305	PS Upgrades Group III Forcemains	\$5,805,000	\$8,795	\$59,198	\$245,451	2791%
Muni	S00306	PS Upgrades Group IV Comfort Stations	\$2,290,375		\$36,231	\$27,679	
Muni	S00308	Pump Station 84 Upgrade & Pump Station 62 Abandon	\$10,885,000	\$700,000	\$273,231	\$864,393	123%
Muni	S00313	Beach Area Low Flow Storm Diversion	\$2,422,334		\$0	\$601	
Muni	S00325	Carmel Valley Trunk Sewer	\$10,707,151		\$3,657	\$2,843	
Muni	S00329	East Point Loma Trunk Sewer	\$3,280,973	\$500,000	\$1,802,119	\$115,836	23%
Muni	S00331	Balboa Avenue Trunk Sewer	\$2,718,160	\$1,735,013	\$259,056	\$1,725,196	99%
Muni	S00332	Montezuma Trunk Sewer	\$4,039,298	\$90,000	\$0	\$178,570	198%
Muni	S00334	USIU Trunk Sewer	\$6,064,129	\$570,000	\$4,145,171	\$726,132	127%
Muni	S00335	Lake Murray Trunk Sewer	\$10,366,815	\$5,064,807	\$1,330,073	\$7,514,079	148%
Muni	S00336	Harbor Drive Trunk Sewer Replacement	\$12,398,748	\$139,000	\$7,780	\$220,678	159%
Muni	S00337	Sewer Pump Station 41 Rehabilitation	\$8,881,955	\$3,122,261	\$662,384	\$2,691,870	86%
Muni	S00338	Sewer Pump Station 79	\$5,202,463		\$0	\$175,896	
Muni	S00341	Pipeline Rehabilitation Phase F-1	\$10,260,957	\$362,900	\$520,447	\$437,105	120%
Muni	S11100	CIS ERP Implementation	\$11,198,520		\$875	\$7,142,387	
Metro	ABO00001	Metro Treatment Plants					
Metro	B00314	MBC BIOSOLIDS SCREEN & BLENDING TANK BYP	\$945,846		\$0	\$7,092	
Metro	B00315	MBC Chemical Storage & Handling System	\$439,131		\$22,509	\$16,193	
Metro	B00316	MBC ACCESS ROAD DRAINAGE IMPROVEMENTS (A	\$270,200	\$80,006	\$2	\$65,191	81%
Metro	B00320	NCWRP GUARD SHACK RELOCATION	\$154,149		\$0	\$2,619	
Metro	B00321	NCWRP LAB AIR CONDITIONING UPGRADE	\$80,000		\$3,584	\$38,821	

Metro	B00527	NCWRP EDR #6	\$1,823,464	\$1,118,360	\$194,408	\$1,197,442	107%
Metro	B00528	MBC WATER SYSTEMS IMPROVEMENTS	\$1,179,355	\$664,102	\$759,932	\$163,034	25%
Metro	B10085	PTL Sedimentation Basins Equip Refurbish	\$7,000,000	\$65,864	\$956	\$106,901	162%
Metro	B10147	Stairway Project at PLWTP-Hydroelectric Building	\$308,577	\$10,606	\$0	\$44,061	415%
Metro	B10178	MBC Chemical System Improvements Phase 2	\$4,200,000		\$0	\$31,077	
Metro	B10225	PTLWTP - POWER CENTER 6	\$250,000	\$200,000	\$35,100	\$203,756	102%
Metro	B11076	PTLWTP PC 6 Transformer Cabinet & Switchboard Repl	\$300,000		\$50,000	\$14,921	
Metro	B11139	North City Cogeneration Facility Expansion			\$0	\$255	
Metro	TBD	MBC Chemical Systems Imp. - Phase 2	TBD	\$10,000			
Metro	ABP00002	Metropolitan System Pump Stations					
Metro	B00313	PS 1&2 ELECTRICAL UPG & NEW BLDG AT PS2	\$9,935,000	\$4,000,000	\$2,746,568	\$3,447,190	86%
Metro	S00309	NCWRP Sludge Pump Station Upgrade	\$457,600	\$29,416	\$66,697	\$56,661	193%
Metro	S00312	Pump Station 2 Onsite Standby Power	\$31,500,000	\$30,000	\$0	\$64,035	213%
Metro	S00314	Wet Weather Storage Facility	\$112,001,859		\$64,792	\$85,467	
Metro	S00315	Point Loma Grit Processing Improvements	\$32,922,630	\$3,500,000	\$4,433,567	\$756,959	22%
Metro	L10000	Metro Facilities Control Systems Upgrade					
Metro	S00320	Metro Facilities Control System Upgrade Phase I	\$7,000,000	\$2,004,457	\$234,065	\$1,243,415	62%
Metro	L100001	Ovation Upgrade at Pt Loma Wastewater Trmt Plant	\$4,180,000	\$30,000	\$0	\$61,244	204%
Metro	S00321	MBC Centrate Collection Upgrades	\$2,311,159	\$1,478,847	\$52,034	\$1,603,135	108%
Metro	S00322	MBC Biosolids Storage Silos	\$7,353,500	\$234,068	\$302,773	\$182,735	78%
Metro	S00323	MBC Odor Control Facility Upgrades	\$5,200,000	\$10,000	\$0	\$54,963	550%
Metro	S00339	MBC Dewatering Centrifuges Replacement	\$12,000,000		\$0	\$154	
				\$96,714,174	\$68,797,086	\$91,699,641	







Change Orders

Change Order Log 07/01/2010 – 06/30/2011							
WBS	PROJECT TITLE	Previously Authorized Project Cost (Original Contract Amount)	Total Change Order (CCO) Amount to date	Engineering Related Costs	Revised Total Project Cost	CCO/Total Project Cost %	Description
4th Quarter (04/01/2011 – 06/30/2011)							
S10004	Water Group 790	\$5,397,000.00	\$1,001,933.60		\$6,398,933.60	18.56%	This change order is to replace the existing deteriorated Asbestos Cement (AC) and Cast Iron (CI) water mains at Avenida La Reina, Via Barranca, Avenida Mirola, and Cardiff St to prevent potential future water main breaks.
B-00347	Sewer Main Rehabilitation Phase J-1B	\$1,655,348.31	\$210,903.70		\$1,866,252.01	12.74%	During the rehabilitation of the contracted sewer mains, the contractor encountered 356 additional laterals. The contractor also provided an equal amount of lateral launch videos over the original contract amount.
3rd Quarter (01/01/2011-03/31/2011)							
B00355; B00068	Sewer & Water Group 747	\$2,745,000	\$275,662.64		\$3,020,662.64	10.04%	The project encountered isolated but relatively large pockets of sand and otherwise clayey unsuitable material. This required larger than anticipated quantities for import material and temporary asphalt during construction. On Grape Street, this underlying condition also caused existing pavement to fail prematurely and the pavement condition was also exasperated by normal construction activities. It was deemed necessary for the project to replace Grape street pavement (from Kettner Blvd. to Columbia Street). One of change orders included the Grape Street pavement replacement at a cost \$174,813.47 which is 63.4 % of all CO's, and \$108,046.64 of it was paid by Street Divisions Annual Allocation Resurfacing Fund 400624.
S01095	Mission Bay Sewage Interceptor System	\$1,063,280	\$135,571.65		\$1,198,851.65	12.75%	This Change Order provides for the replacement of failed and deteriorated equipments, hatches, valves, and other mechanical and civil devices on existing vaults. The project was initially designed and shelved for several years due to lack of funding. Various low flow stations had additional equipment that deteriorated and needed replacement. A list of these needed changes were identified and agreed upon with the PUD operations staff, the contractor and the City Field Staff. This change order provides for these upgrades. Replacing these malfunctioning devices will increase the reliability of the system and will reduce future maintenance costs associated with these vaults.
2nd Quarter (10/1/2010-12/31/2010)							
S00035	Otay II Pipeline Improvements, Cast Iron Replacement Phase	\$7,597,204	\$1,812,214		\$9,409,418.00	23.85%	Majority of the cost increases are due to the addition of 1,720 feet of new 8-inch water main, resurfacing & paving restoration and the addition of a new Telemetry SCADA points to the project's construction contract.
1st Quarter (7/1/2010-9/30/2010)							
B-00499/ B-00503	Sewer Pump Station 27	\$3,587,134.75	\$3,023,107.54	\$604,161	\$6,610,242.29	84.28%	Replacement of pumps to eliminate vibration, air entrapment, and accommodate future flows. Replacement of flow meter and instrumentation, replacing motor room floor slab. Addressing Emergency Storage Tank ground water infiltration and wet well deficiencies at the station.