

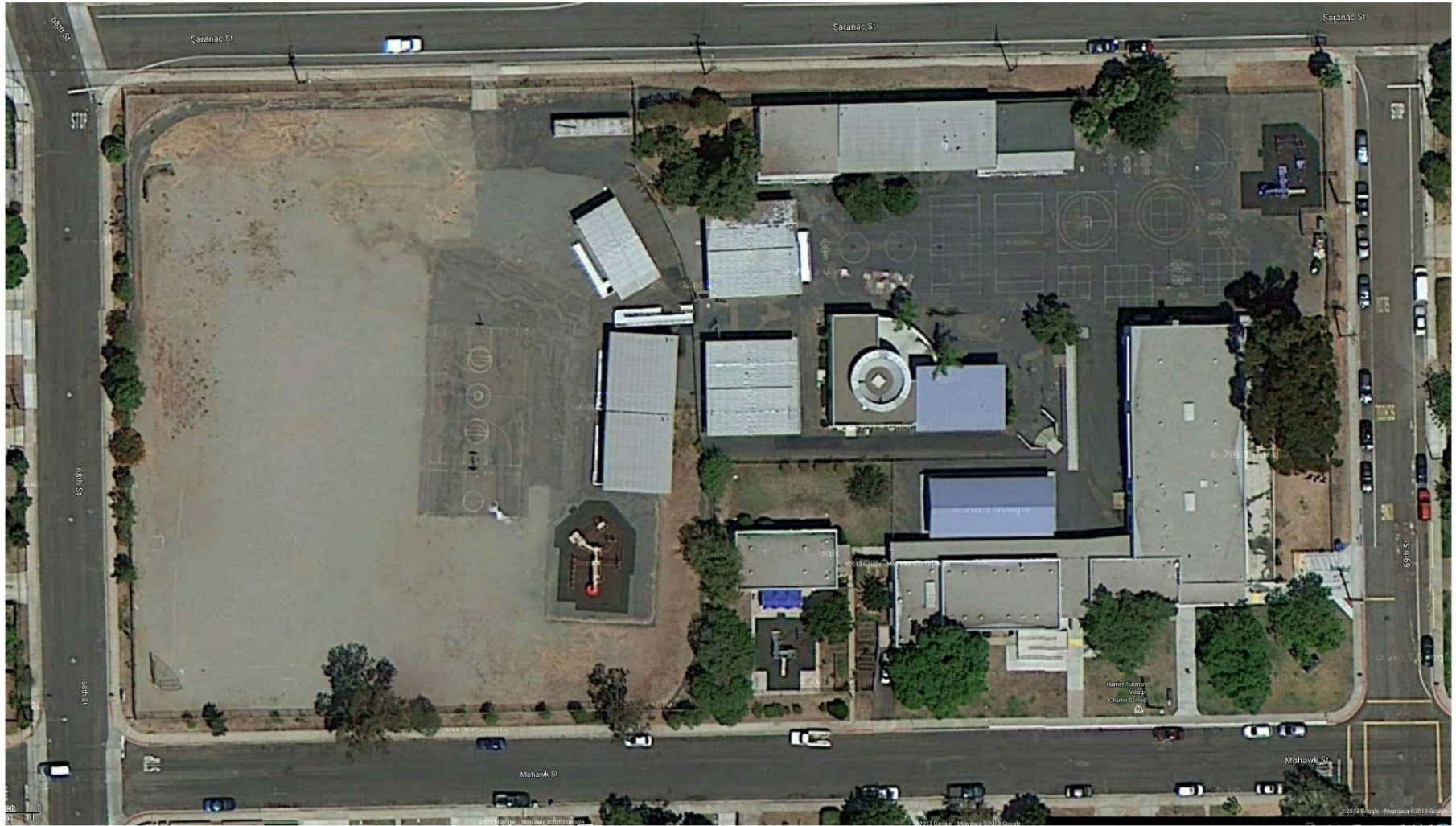


***Harriet Tubman Village Charter School
Joint Use Improvements
The City of San Diego***



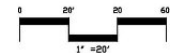
Agenda

- **Summary of Site Issues**
- **Site Plan**
 - **Shady Grove/Play Area**
 - **Joint Use Area/Public Access Area**
 - **Permeable Swale**
- **Turf**



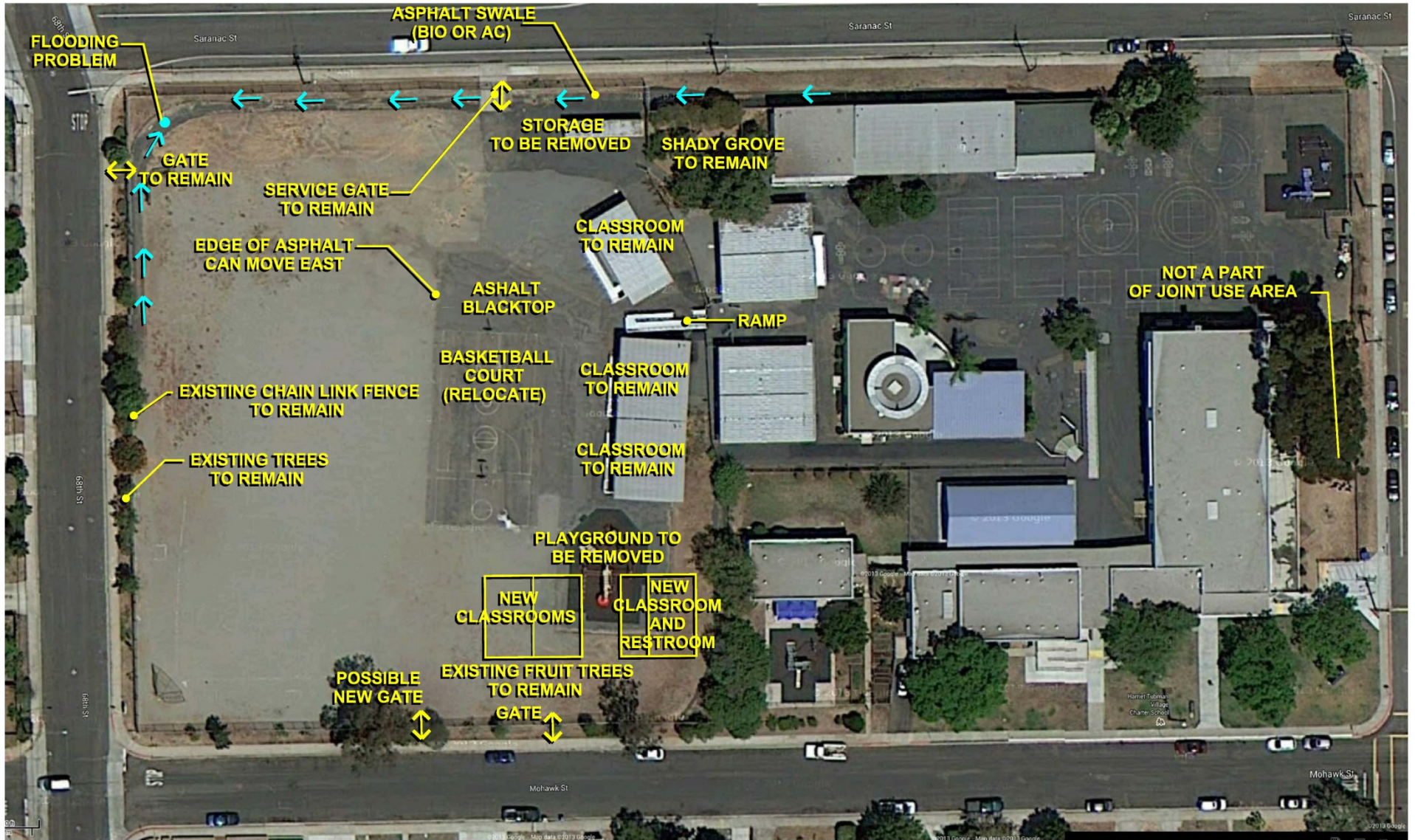
Existing Aerial Photo
Harriet Tubman Charter School Joint Use Improvements

July 17, 2013



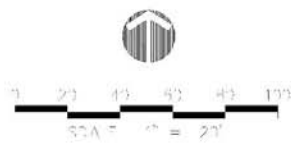
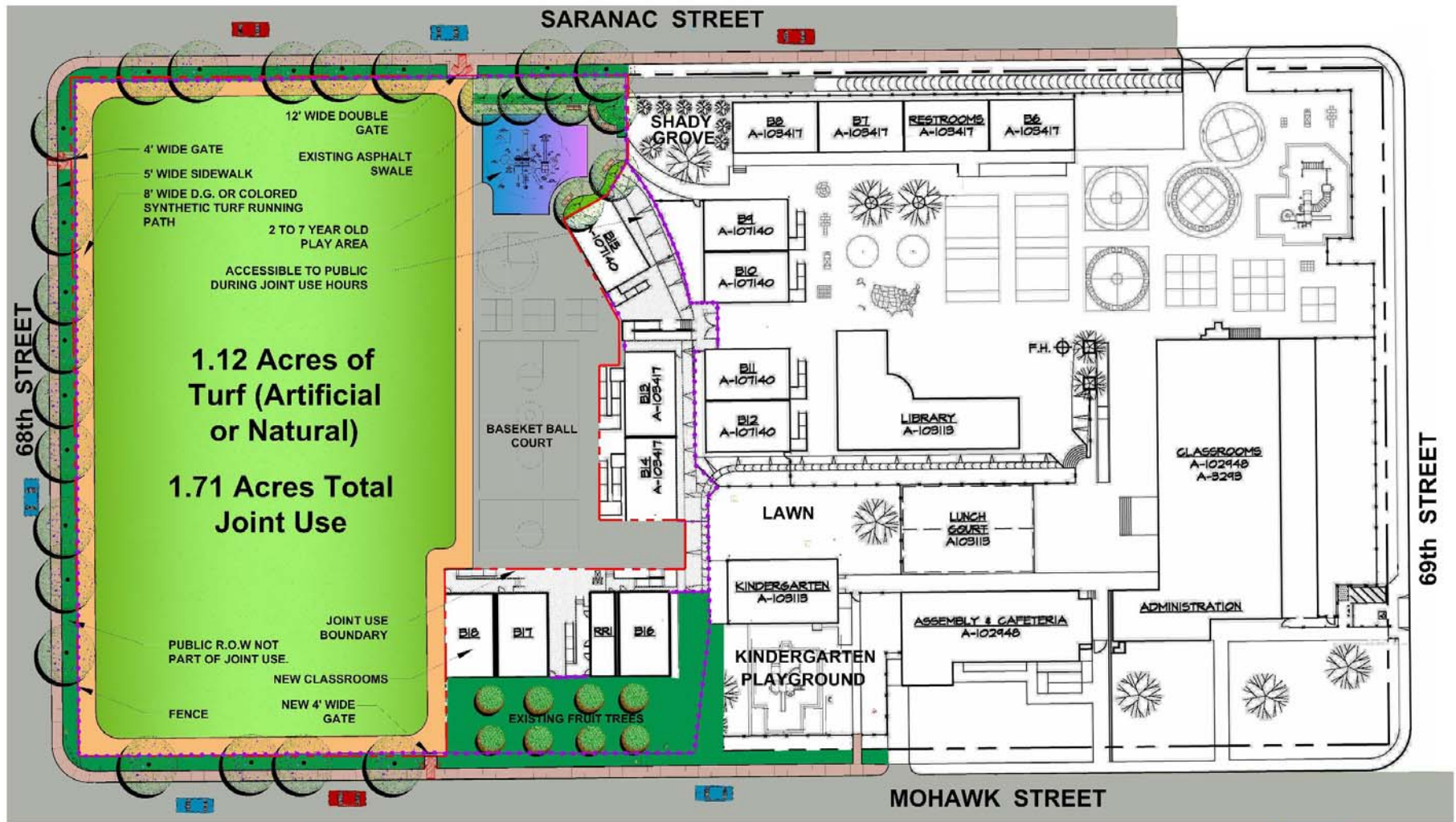
©2013 Google - Map data ©2013 Google

Summary of Site Issues



SITE SYNTHESIS

Previous Concept Plan

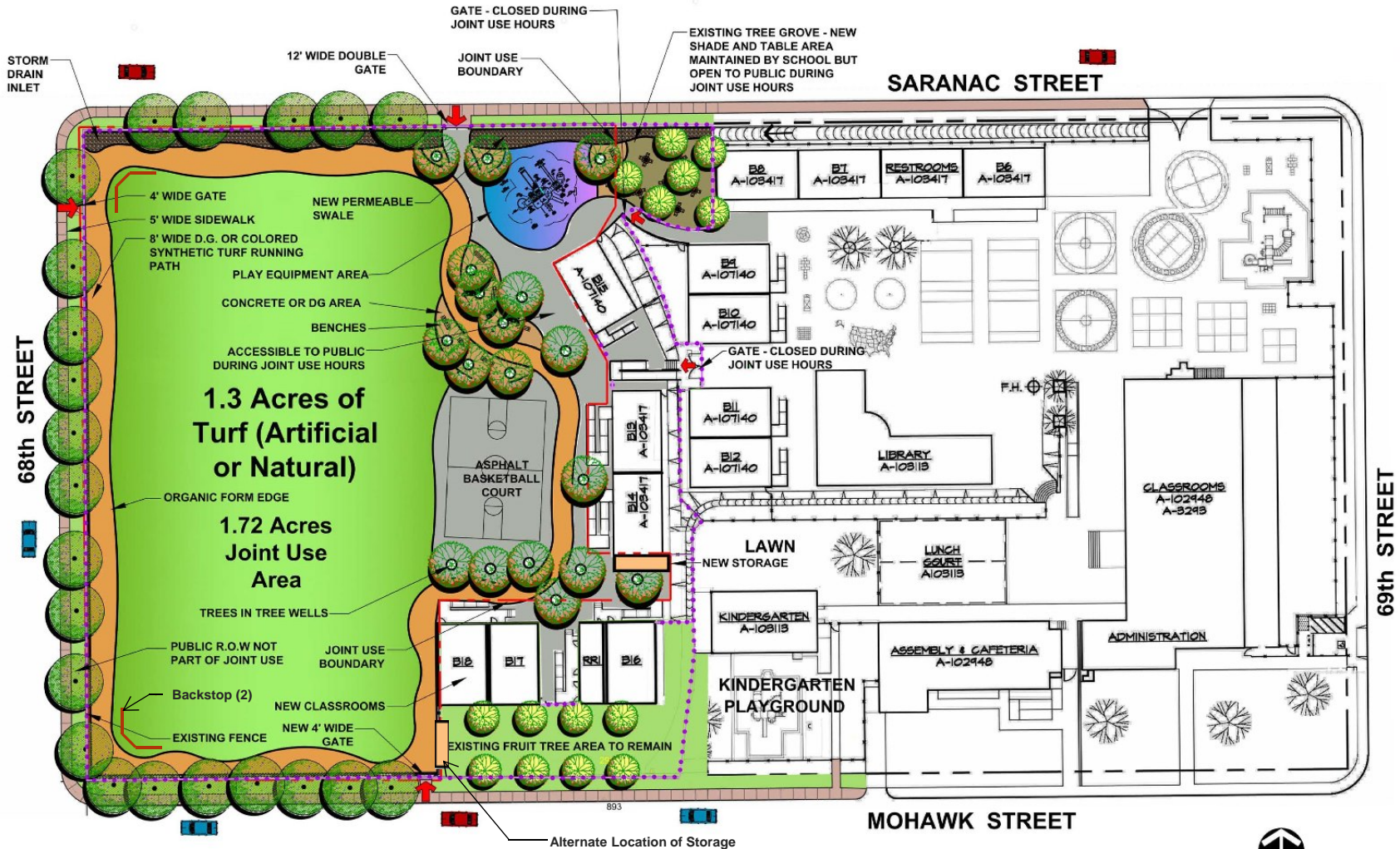


CONCEPT PLAN HARRIET TUBMAN CHARTER SCHOOL JOINT USE IMPROVEMENTS

MAY 16, 2013

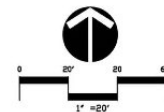


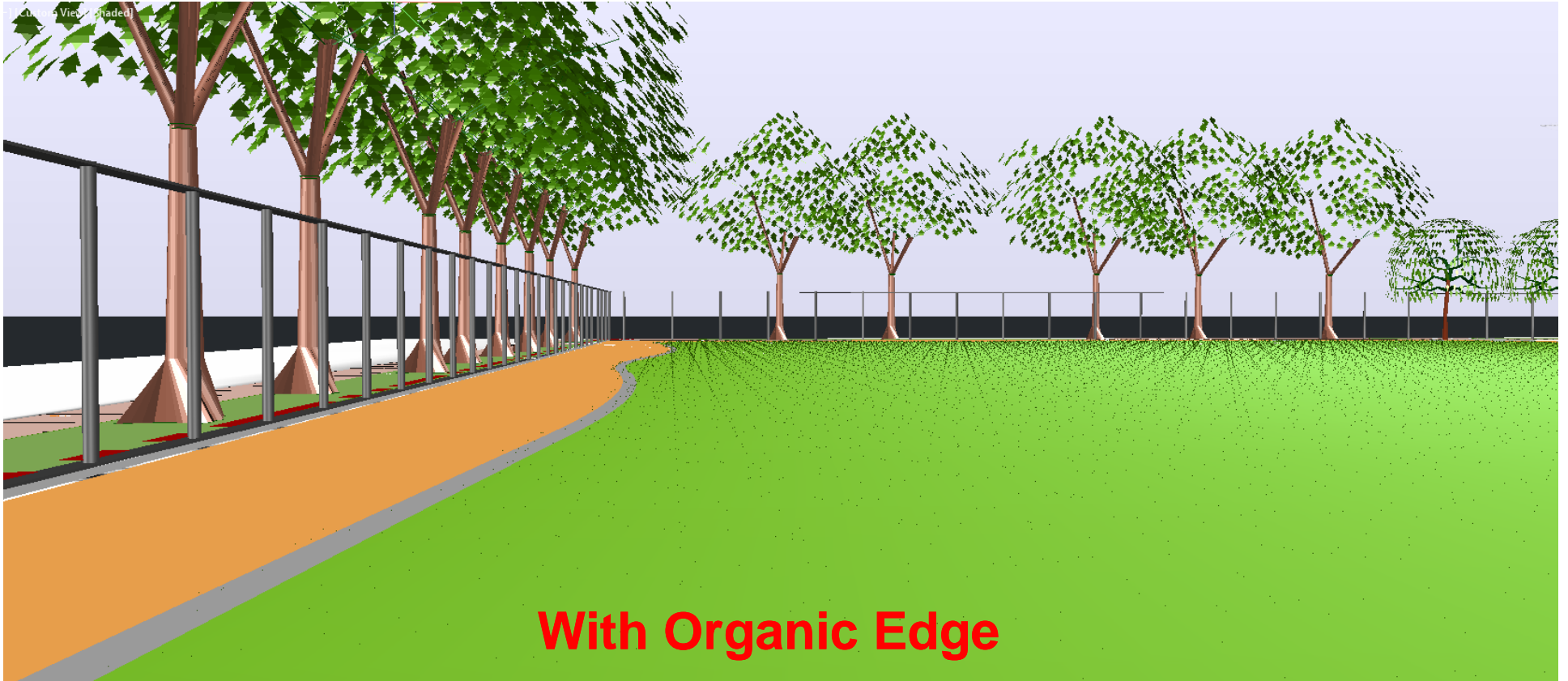
New Concept Plan



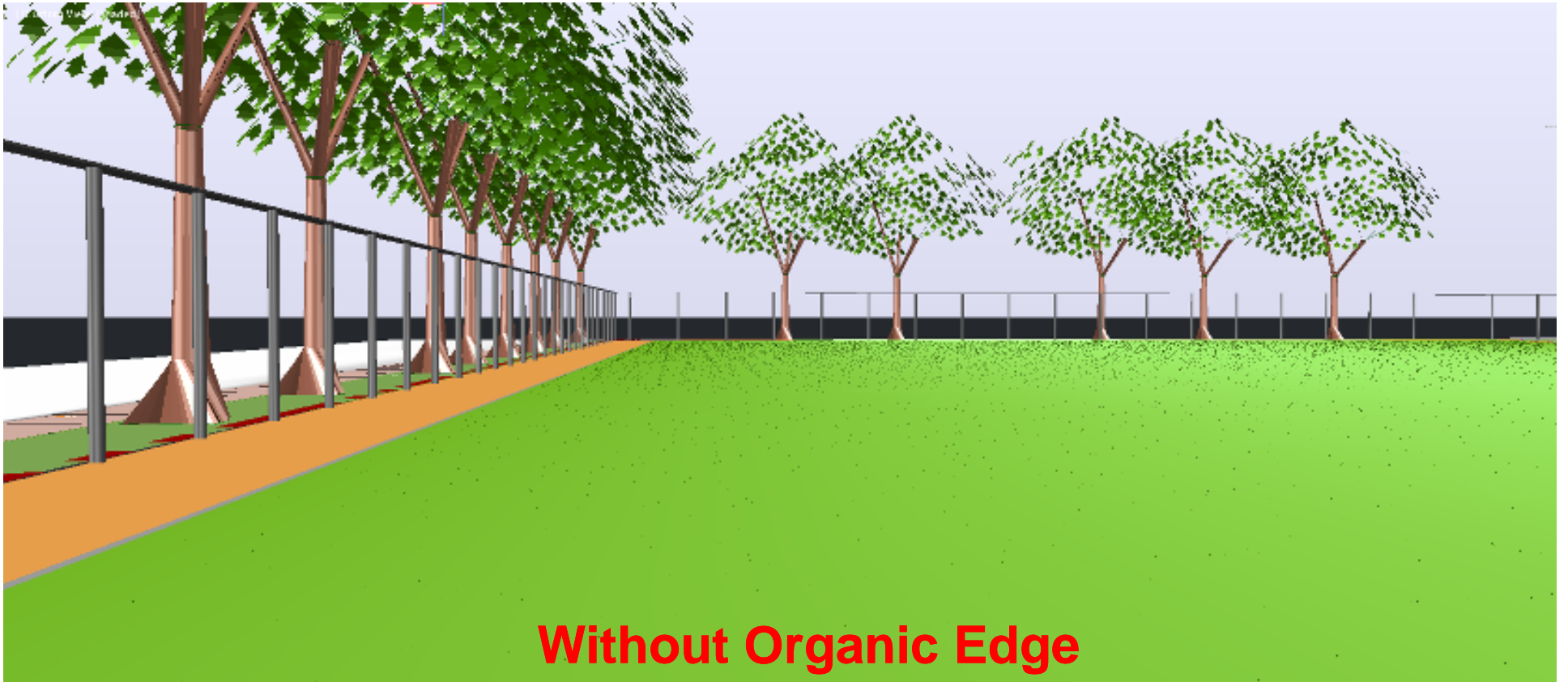
Proposed Site Plan
 Harriet Tubman Charter School Joint Use Improvements

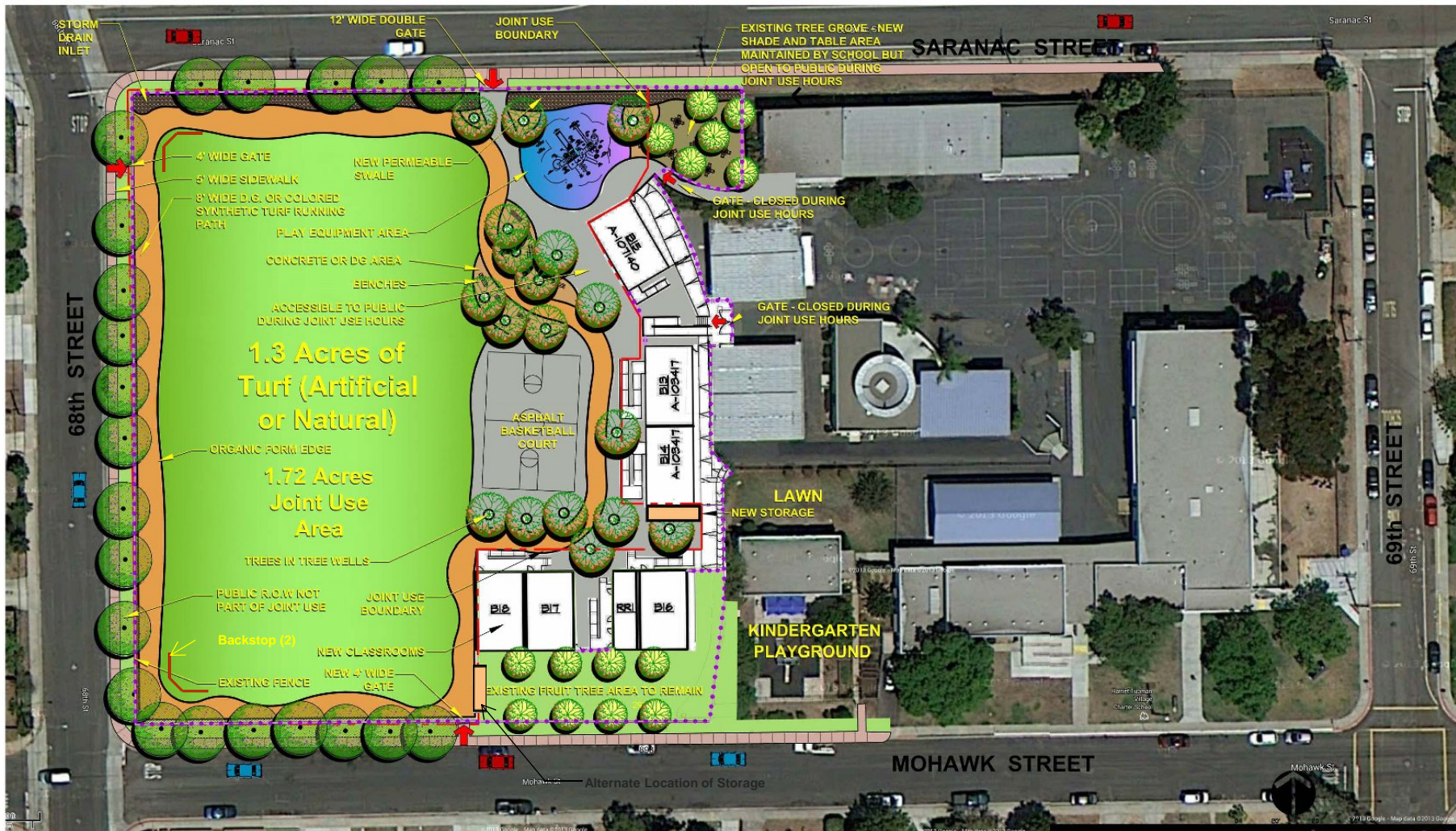
July 17, 2013





With Organic Edge

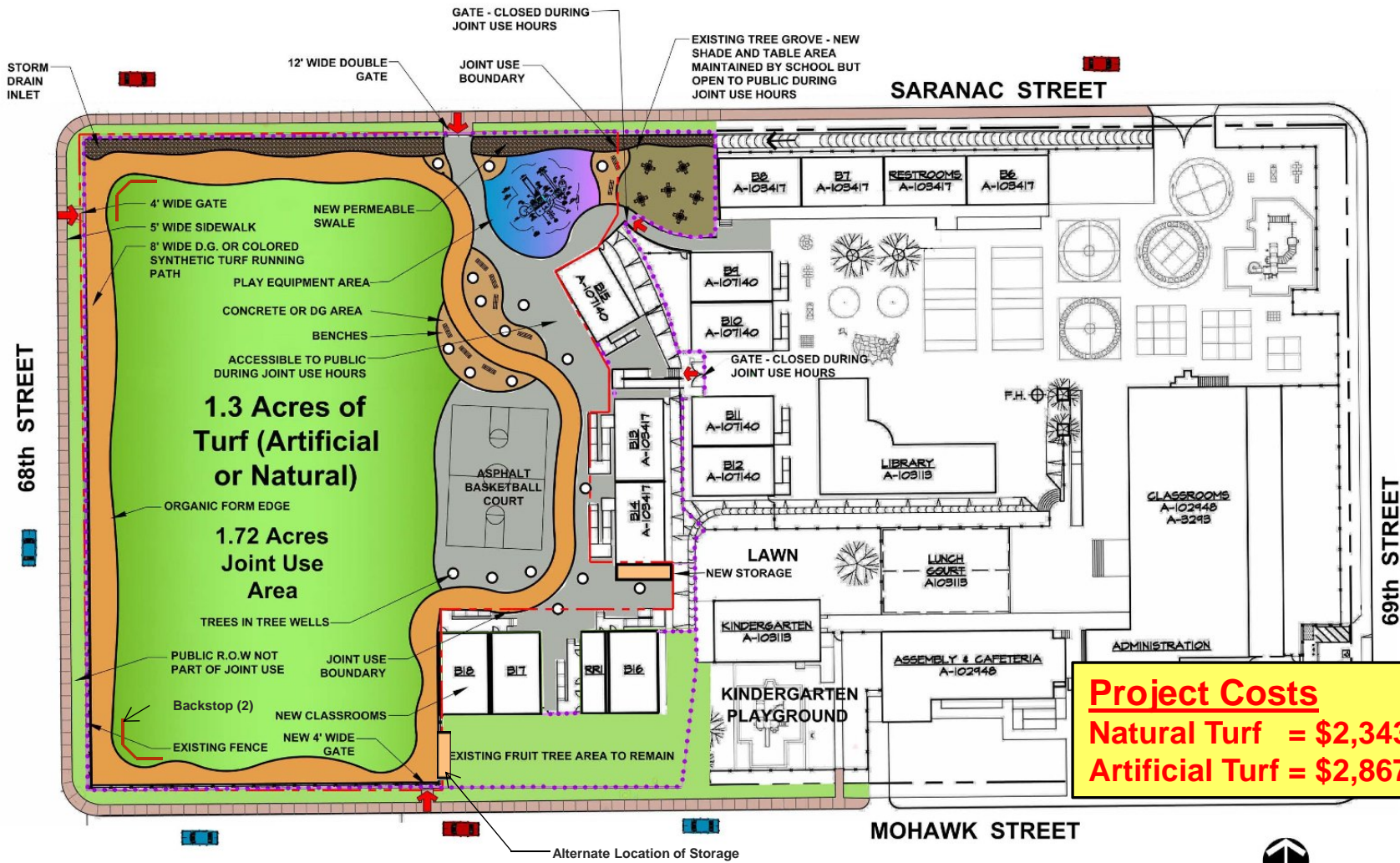




Proposed Site Plan with Aerial Photo
 Harriet Tubman Charter School Joint Use Improvements

July 17, 2013





Site Plan with Trees not Shown
 Harriet Tubman Charter School Joint Use Improvements

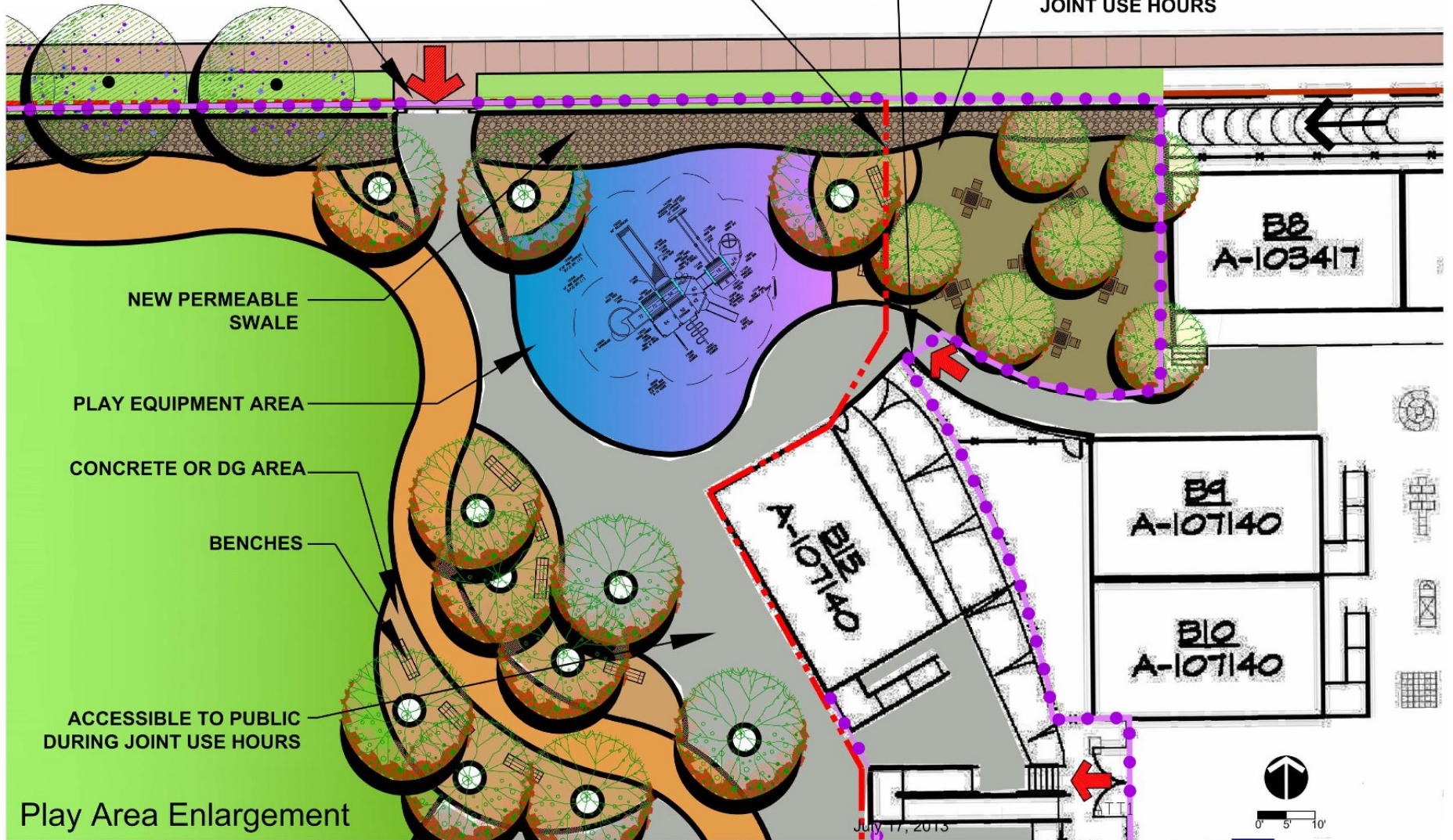
July 17, 2013

GATE - CLOSED DURING
JOINT USE HOURS

EXISTING TREE GROVE - NEW
SHADE AND TABLE AREA
MAINTAINED BY SCHOOL BUT
OPEN TO PUBLIC DURING
JOINT USE HOURS

12' WIDE DOUBLE GATE

JOINT USE BOUNDARY



ACCESSIBLE TO PUBLIC
DURING JOINT USE HOURS

NEW PERMEABLE
SWALE

PLAY EQUIPMENT AREA

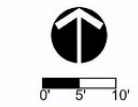
CONCRETE OR DG AREA

BENCHES

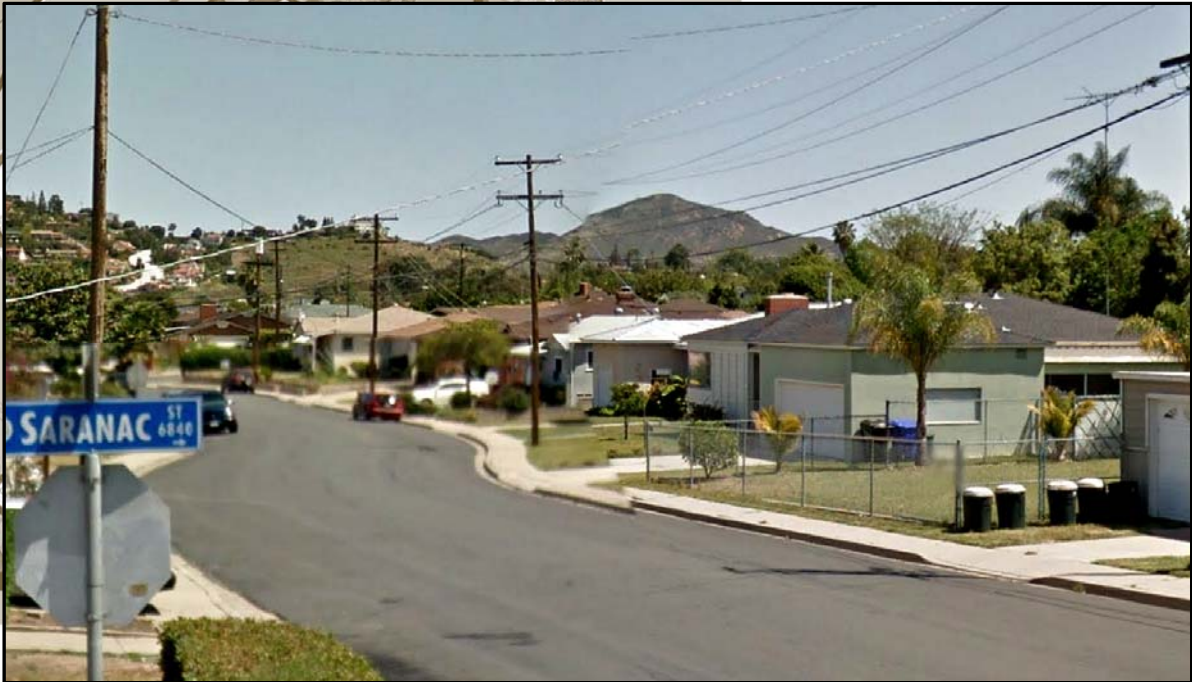
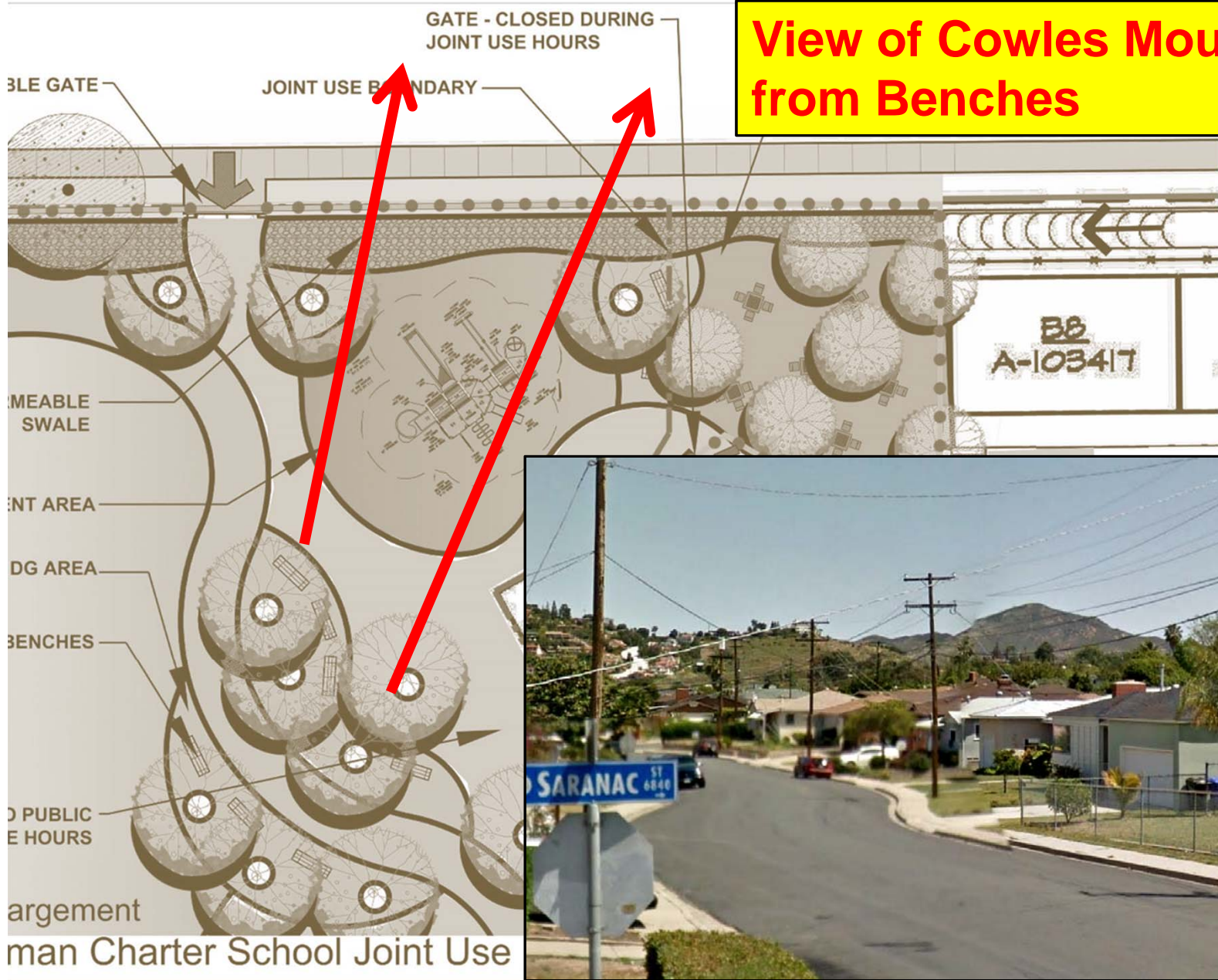
Play Area Enlargement

Harriet Tubman Charter School Joint Use Improvements

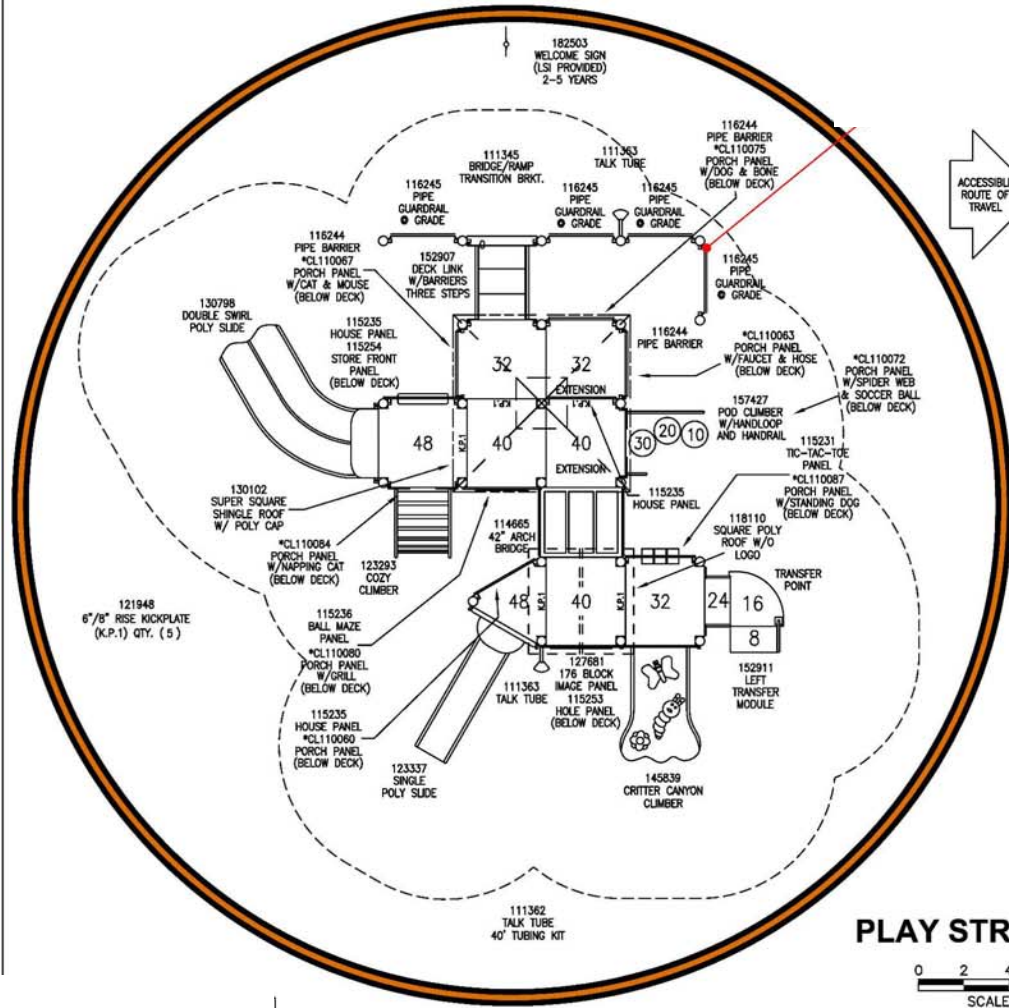
July 17, 2013



View of Cowles Mountain from Benches



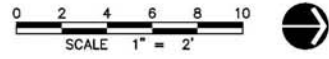
Play Structure



ACCESSIBLE ROUTE OF TRAVEL



PLAY STRUCTURE LAYOUT

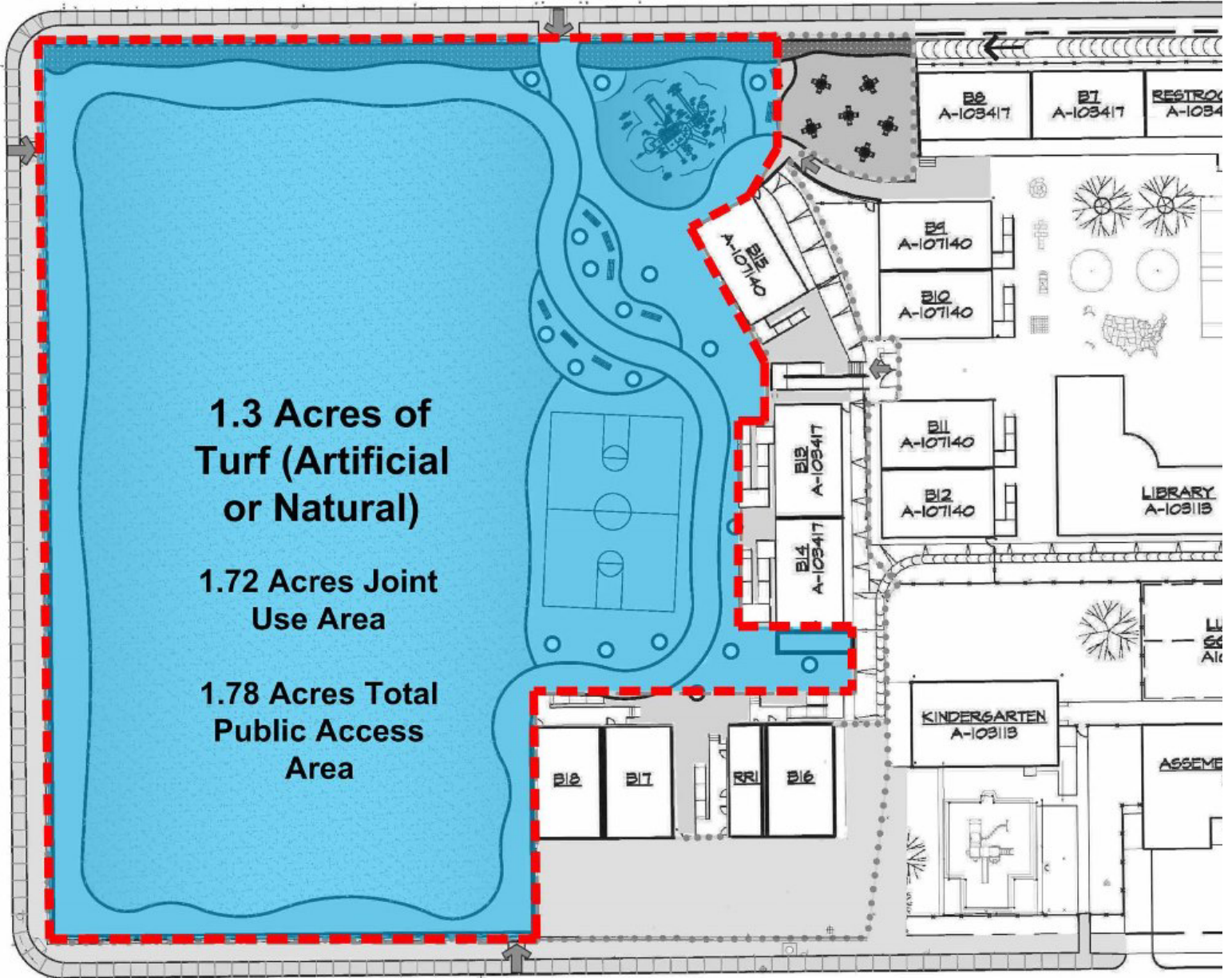




Play Structure

SAR

68th STREET



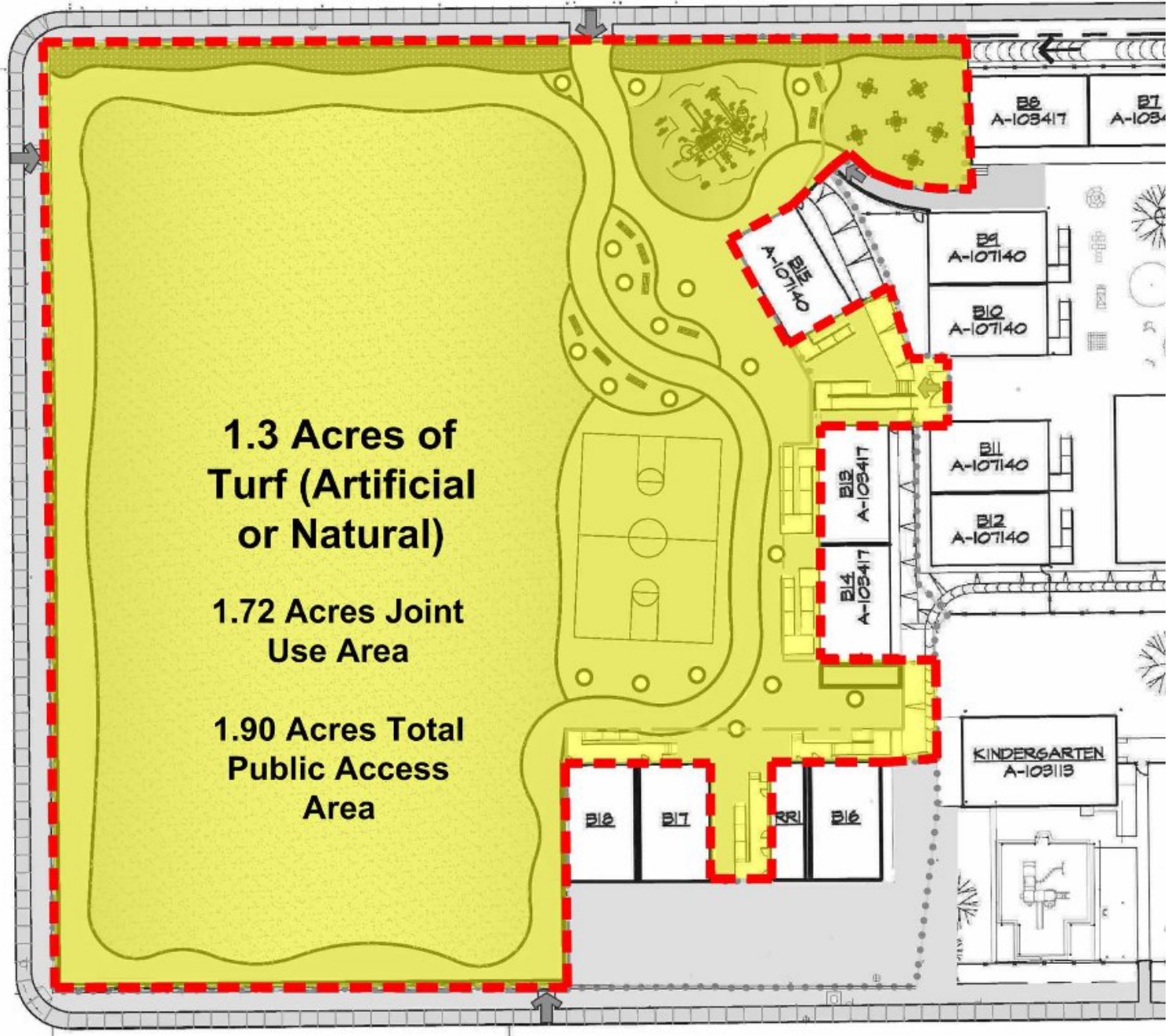
1.3 Acres of Turf (Artificial or Natural)

1.72 Acres Joint Use Area

1.78 Acres Total Public Access Area

MOHA

68th STREET



1.3 Acres of Turf (Artificial or Natural)

1.72 Acres Joint Use Area

1.90 Acres Total Public Access Area



Flooding



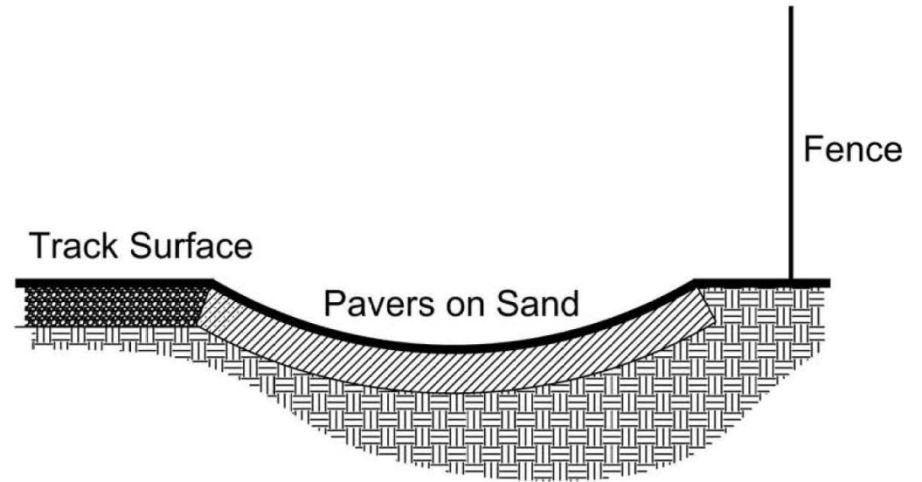
**Existing
Asphalt Swale**



**Existing
Asphalt Swale**



**Existing
Asphalt Swale**



Possible Section of Swale

Permeable Swale



Permeable Swale



Wilson Middle School – Natural Turf



Language Academy – Synthetic Turf



Harriet Tubman Village Charter School
Joint Use Improvements
The City of San Diego

