

TUBMAN CHARTER SCHOOL JOINT USE IMPROVEMENTS

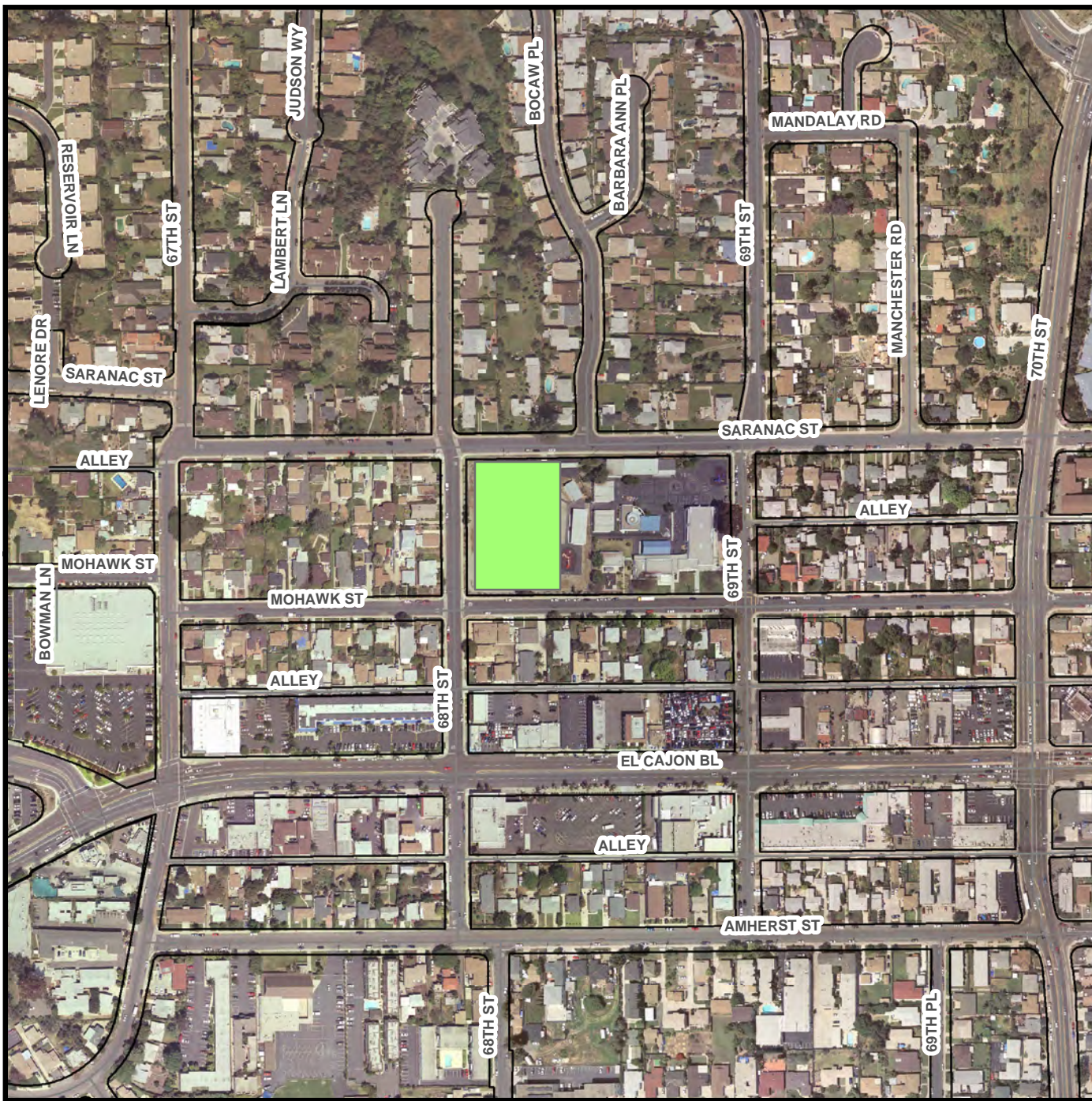
SENIOR ENGINEER
Samir Mahmalji
619-533-5301

PROJECT MANAGER
Alexandra Corsi
619-533-4644

PROJECT INFORMATION LINE
619-533-4207



Architectural Engineering and Parks



Legend

 Project Site



THIS MAP/DATA IS PROVIDED WITHOUT WARRANTY OF ANY KIND, EITHER EXPRESS OR IMPLIED, INCLUDING, BUT NOT LIMITED TO, THE IMPLIED WARRANTIES OR MERCHANTABILITY AND FITNESS FOR A PARTICULAR PURPOSE. Note: This product may contain information reproduced with permission granted by RAND McNALLY & COMPANY to SanGIS. This map is copyrighted by RAND McNALLY & COMPANY. It is unlawful to copy or reproduce all or any part thereof, whether for personal use or resale, without the prior permission of RAND McNALLY & COMPANY.