

FREQUENTLY ASKED QUESTIONS

“Working together to engineer a better tomorrow.”

UPAS STREET PIPELINE REPLACEMENT PROJECT

Construction Process

Infrastructure Projects:

- 📌 Airports
- 📌 Bikeways
- 📌 Bridges
- 📌 Drainage Control Facilities
- 📌 Flood Control Facilities
- 📌 Libraries
- 📌 Parks
- 📌 Recreation Centers
- 📌 Police Stations
- 📌 Fire Stations
- 📌 Lifeguard Stations
- 📌 Street Improvements
- 📌 Street Lights
- 📌 Traffic Signals
- 📌 Utilities Undergrounding
- 📌 Water Facilities
- 📌 Sewer Facilities
- 📌 Water Pipelines
- 📌 Sewer Pipelines

What are the construction work hours?

The project will adhere to standard City construction hours, as follows.

- Residential Areas: 8 a.m. – 4 p.m.
- Non-Residential Areas: 7 a.m. – 4 p.m.

Will construction work occur on weekends?

In addition, please note that night work may be needed in a few localized areas in order to reduce traffic impacts and water reliability impacts. As the locations of night work are determined, notice will be provided. Additional noise control will be required for night work, and the City and Contractor will coordinate with surrounding residents and businesses to address any concerns.

In general, weekend work is not planned for this project. Work during weekends will typically only be allowed if it offers the best means of avoiding disruption due to week-day work on heavily traveled streets, or to reduce access issues. If work is to occur over the weekend, hours and dates will be posted on the project website at least 72-hours in advance, and advance notice will be provided to properties in the vicinity of the work.

Will construction create a lot of noise and dust?

The City will require the Contractor to implement dust and noise control measures to minimize disruption to residences, businesses and other facilities in the area. A hotline number will also be provided to offer resolution for concerns related to construction disturbance.

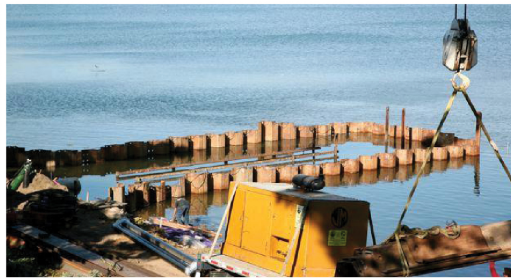
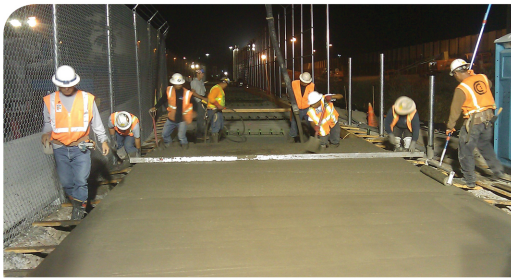
If the pipeline runs in front of my house or business, how will I get in and out of my driveway?

To provide access where pipeline work is occurring in close proximity to driveways, the Contractor will be required to install drivable, skid-free trench plates over the open pipeline trenches. Installing trench plates takes about 15 minutes, and advance notice will be provided so that disruption and inconvenience are reduced.

Will the project affect mail delivery, trash pick-up, or other services in my neighborhood?

No. The Contractor will be required to maintain safe, accessible walkways for mail carriers and all other services. The Contractor will be required to coordinate with the City’s Environmental Services Department to ensure trash services are not interrupted.





“Working together to engineer a better tomorrow.”

UPAS STREET PIPELINE REPLACEMENT PROJECT

Construction Process (continued)

Infrastructure Projects:

- 📌 Airports
- 📌 Bikeways
- 📌 Bridges
- 📌 Drainage Control Facilities
- 📌 Flood Control Facilities
- 📌 Libraries
- 📌 Parks
- 📌 Recreation Centers
- 📌 Police Stations
- 📌 Fire Stations
- 📌 Lifeguard Stations
- 📌 Street Improvements
- 📌 Street Lights
- 📌 Traffic Signals
- 📌 Utilities Undergrounding
- 📌 Water Facilities
- 📌 Sewer Facilities
- 📌 Water Pipelines
- 📌 Sewer Pipelines

Will project construction make it difficult for patrons to access businesses in the area?

There may be some minor inconveniences; however, the Contractor will be required to provide safe, reliable access to all businesses during normal business hours.

Will my water service be interrupted during construction?

Every effort will be made to avoid service interruptions, but due the nature of the work, service may need to be interrupted for short periods. In the event of a service interruption, the Contractor will be required to provide at least 72-hours’ advance notice to all affected residents, businesses, and facilities. Service interruptions are not expected to exceed 4-hours in duration. Durations are dependent on the complexity of the connection point.

How will the project affect traffic? Will streets be closed?

Safe and reliable access will be provided to all residences, businesses, and other facilities during construction. Because the project will require pipeline work within City streets, temporary lane closures will be required, and in some places detours may be needed. Detours and closures will be identified with warning signs, posted on the project website, and notices will be mailed to properties along the construction work zone in advance of such activities.

