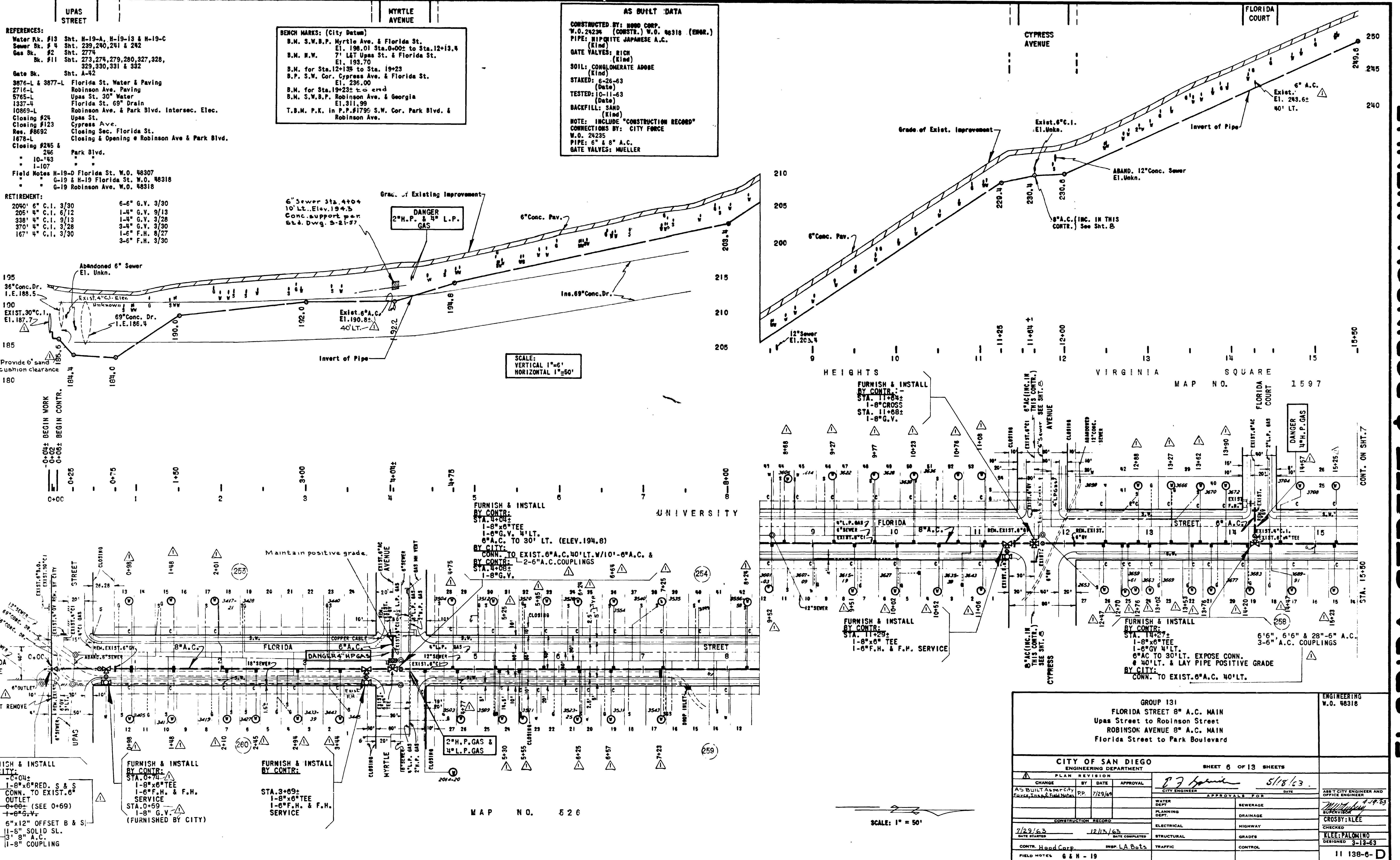


**FLORIDA STREET & ROBINSON AVENUE**



- REFERENCES:**
- Water Rk. #13 Sht. H-19-A, H-19-B & H-19-C
  - Sewer Bk. #4 Sht. 239, 240, 241 & 242
  - Gas Bk. #2 Sht. 277
  - Bk. #11 Sht. 273, 274, 279, 280, 327, 328, 329, 330, 331 & 332
  - Gate Bk. Sht. A-42
  - 3876-L & 3877-L Florida St. Water & Paving
  - 2716-L Robinson Ave. Paving
  - 5765-L Upas St. 30" Water
  - 1337-L Florida St. 69" Drain
  - 10869-L Robinson Ave. & Park Blvd. Intersec. Elec.
  - Closing #24 Upas St.
  - Closing #123 Cypress Ave.
  - Res. #8692 Closing Sec. Florida St.
  - 1678-L Closing & Opening @ Robinson Ave & Park Blvd.
  - Closing #245 & 246 Park Blvd.
  - 10-143
  - 1-107
  - Field Notes H-19-D Florida St. W.O. 48307
  - G-18 & H-19 Florida St. W.O. 48318
  - G-19 Robinson Ave. W.O. 48318

- RETIREMENT:**
- 2040' 6" C.I. 3/30
  - 205' 4" C.I. 6/12
  - 338' 4" C.I. 9/13
  - 370' 4" C.I. 3/28
  - 167' 4" C.I. 3/30
  - 6-6" G.V. 3/30
  - 1-4" G.V. 9/13
  - 1-4" G.V. 3/28
  - 3-4" G.V. 3/30
  - 1-6" F.H. 8/27
  - 3-6" F.H. 3/30

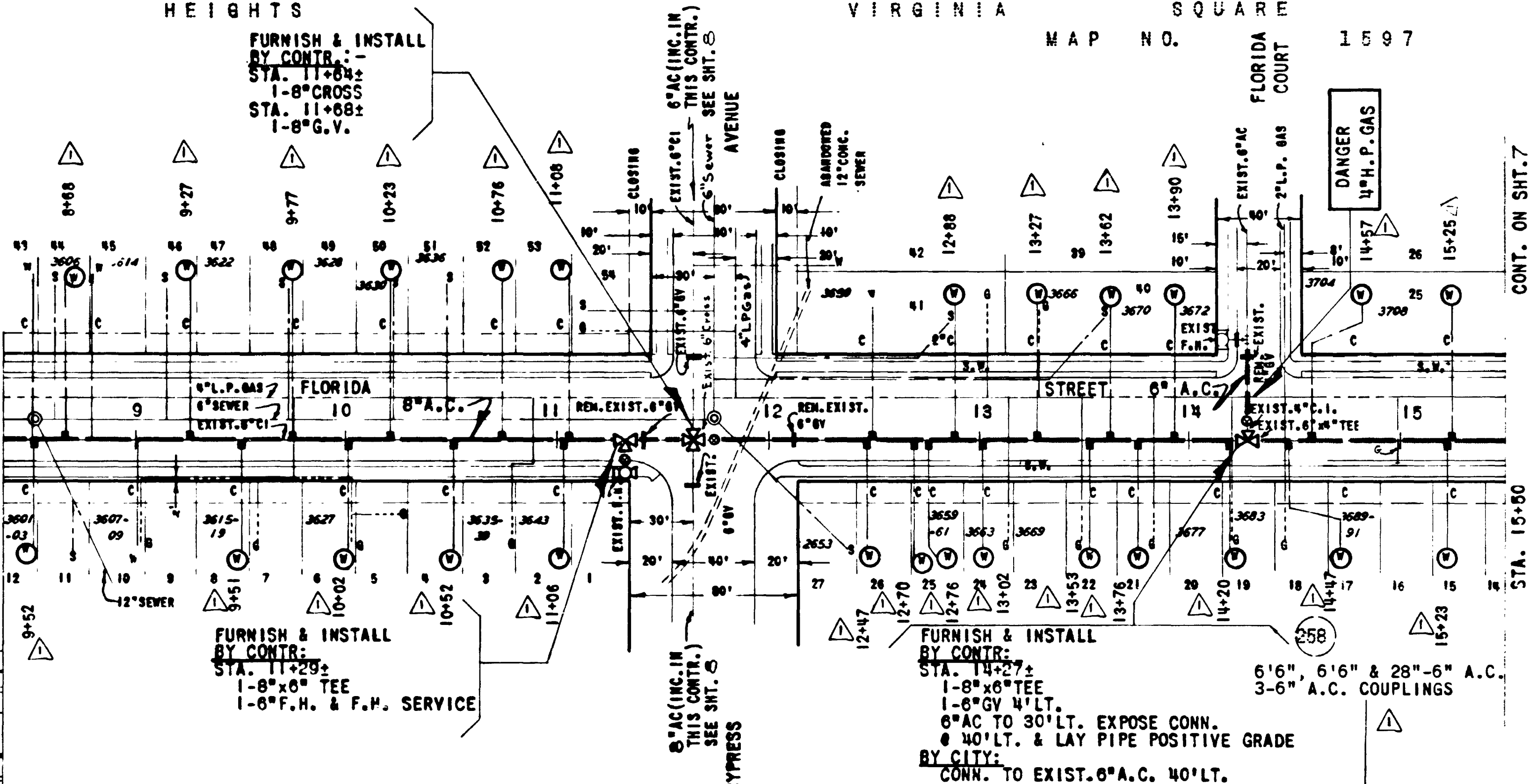
**BENCH MARKS: (City Datum)**

- B.M. S.W.B.P. Myrtle Ave. & Florida St. El. 198.01 Sta. 0+00 to Sta. 12+13.4
- B.M. N.W. 7' L&T Upas St. & Florida St. El. 193.70
- B.M. for Sta. 12+13.4 to Sta. 19+23
- B.P. S.W. Cor. Cypress Ave. & Florida St. El. 236.00
- B.M. for Sta. 19+23 to end
- B.M. S.W.B.P. Robinson Ave. & Georgia El. 311.99
- T.B.M. P.K. in P.P.#1795 S.W. Cor. Park Blvd. & Robinson Ave.

**AS BUILT DATA**

CONSTRUCTED BY: HOOD CORP.  
 W.O. 24234 (CONSTR.) W.O. 48318 (ENGR.)  
 PIPE: HIPOLITE JAPANESE A.C. (Kind)  
 GATE VALVES: RICH (Kind)  
 SOIL: CONGLOMERATE ADOBE (Kind)  
 STAKED: 6-26-63 (Date)  
 TESTED: 10-11-63 (Date)  
 BACKFILL: SAND (Kind)  
 NOTE: INCLUDE "CONSTRUCTION RECORD" CONNECTIONS BY: CITY FORCE  
 W.O. 24235  
 PIPE: 6" & 8" A.C.  
 GATE VALVES: MUELLER

SCALE: VERTICAL 1"=6'  
 HORIZONTAL 1"=50'



GROUP 131 FLORIDA STREET 8" A.C. MAIN Upas Street to Robinson Street ROBINSON AVENUE 8" A.C. MAIN Florida Street to Park Boulevard			ENGINEERING W.O. 48318
CITY OF SAN DIEGO ENGINEERING DEPARTMENT			
PLAN REVISION CHANGE BY DATE APPROVAL AS BUILT AS PER CITY FORCE, L.A. & FIELD NOTES P.P. 7/29/63		SHEET 6 OF 13 SHEETS DATE 5/18/63	
CONSTRUCTION RECORD DATE STARTED 7/29/63 DATE COMPLETED 12/15/63 CONTR. HOOD CORP. INSP. L.A. BOETS		APPROVALS FOR WATER DEPT. _____ PLANNING DEPT. _____ ELECTRICAL _____ STRUCTURAL _____ TRAFFIC _____ SEWERAGE DEPT. _____ DRAINAGE _____ HIGHWAY _____ GRADES _____ CONTROL _____	
FIELD NOTES: G & H - 19			ASST. CITY ENGINEER AND OFFICE ENGINEER SUPERVISOR CHECKED DESIGNED 11 138-6-D