

THIS SHEET FOR ADDITIVE ALTERNATE NO. 1 ONLY.

NOTE UPAS ST. SHALL BE HIGHLIGHTED BY CITY FORCES PRIOR TO BEGINNING OF CONSTRUCTION. CITY TO FURNISH HIGHLIGHTING MATERIAL AND MAKE ALL CONNECTIONS.

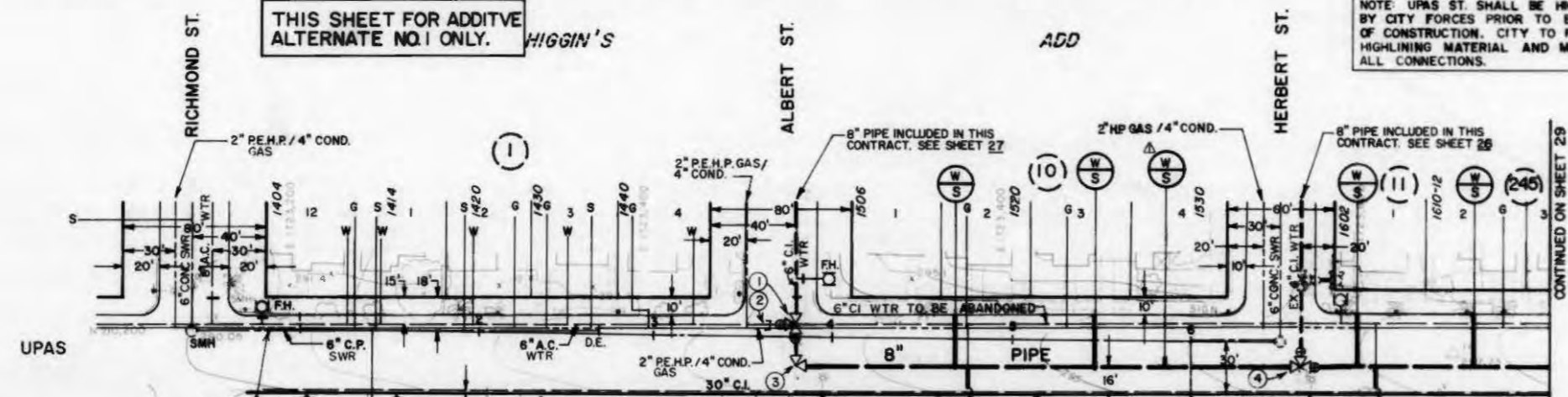
REFERENCES: THOMAS BROTHER MAP - PG-60
 100' SCALE MAP - 210-1722
 GATE BOOK PAGE - 8-19
 S.D. GAS & ELECT. CO.
 GAS BOOK - 2, PG'S - 198, 199 & BOOK-15, PG-488E

IMPROVEMENTS:
 SEWER: 6917-W
 WATER: 5766-L, 5767-L, 2415-L, 6917-W
 PAVING

BENCH MARKS (MEAN SEA LEVEL DATUM)
 B.M. - NW/4 UPAS ST. & RICHMOND ST., EL. 290.039

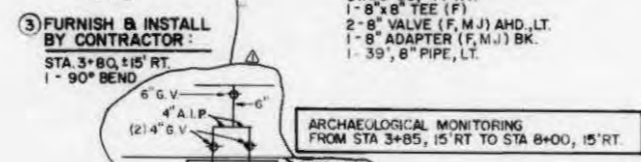
FIELD NOTES:
 1 CROSS-SECTION 210-1719 LINE "K" KELLEY,
 3-27-86, W.O. 147125, SHT. OF 18

RETIREMENTS:
 415' - 6" C.I. - YR. UNK.
 1' - F.H. - 1928



- FURNISH & INSTALL BY CONTRACTOR:**
 STA 3+80, 7' LT.
 1- 8"x8" TEE (F)
 1- 8" VALVE (F.M.J.) RT.
 1- 6" VALVE (F.M.J.) BK.
 1- 8" ADAPTER (F.M.J.) LT.
 1- 22' 8" PIPE, RT. & 1- 5' 8" PIPE, LT.
- BY CITY AHEAD OF CONTRACTOR:**
 STA 3+65, 7' LT.
 CUT & PLUG, ABANDON 6" CI PIPE AHEAD. AFTER NEW MAIN HAS BEEN ACCEPTED, CONNECT EX 6" AC TO NEW 6" VALVE.

- FURNISH & INSTALL BY CONTRACTOR:**
 STA 6+66, 14' RT.
 1- 8"x8" TEE (F)
 2- 8" VALVE (F.M.J.) AHD., LT.
 1- 8" ADAPTER (F.M.J.) BK.
 1- 39' 8" PIPE, LT.



SEWER AND WATER GROUP 55	
UPAS ST.	
RICHMOND ST. TO HERBERT ST.	
ADDITIVE ALTERNATE NO. 1	
CITY OF SAN DIEGO, CALIFORNIA ENGINEERING AND CAPITAL PROJECTS DEPARTMENT	E.M.R. DWG. 6491(SEWER)
DESIGNER: [Signature]	CHECKED: [Signature]
DEPUTY DIRECTOR: [Signature]	SECTION HEAD: [Signature]
DESCRIPTION: AS BUILT '99	DATE: 1-23-97
ORIGINAL: RA/RB	DATE: 7/28/99
CONSTRUCTION RECORD:	DATE: 210-1722
CONTRACTOR: P. ARDUENCO	DATE STARTED: 3/29/97
INSPECTOR: T. PALUSKY	DATE COMPLETED: 7/28/99
CONNECTING BY:	PROJECT NO.: 25163-28-D

AS-BUILT

FILMED FROM THE ORIGINAL. BEST QUALITY OBTAINABLE. EXCESSIVE GRAY BACKGROUND MAY CAUSE A POOR QUALITY REPRODUCTION.

