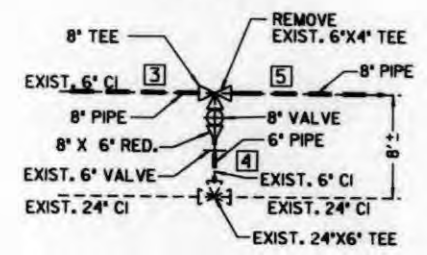
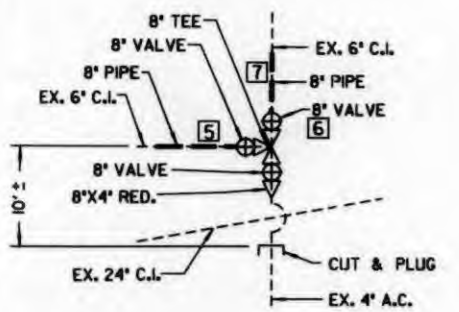


DETAIL 'A'
SCALE: NONE



DETAIL 'B'
SCALE: NONE



DETAIL 'C'
SCALE: NONE

① BY CITY FORCES
AHEAD OF CONTRACTOR
STA. 1+45 ±, 10' RT.
FURNISH AND INSTALL
1- 8"X6" TEE (F)

1- 8" VALVE AHD. (F)
1- 8" ADAPTOR AHD. (F,M,J)
1- 6" VALVE RT. (F)
1- 6" ADAPTOR RT. (F,M,J)
CLOSE VALVE AHD.

STA. 1+45 ±, 28' RT.
REMOVE EXIST. 6"X4" RED
AND EXIST. 6" VALVE.

AFTER NEW MAIN HAS BEEN
ACCEPTED MAKE CONNECTION
FROM WHERE EXIST. 6" VALVE
WAS REMOVED TO 8"X6" TEE
AT STA. 1+45 ±, 10' RT.
OPEN VALVE AHD.

(SEE DETAIL 'A')

② BY CITY FORCES
AHEAD OF CONTRACTOR
STA. 2+45 ±, 15' RT.
CLOSE EXIST. 6" VALVE
AFTER NEW MAIN HAS BEEN
ACCEPTED, REMOVE EXIST. 6" VALVE
MAKE CONNECTION FROM 8"X6" RED.
TO EXIST. 24"X6" TEE @ 2+45 ± 18' RT.
OPEN NEW VALVE RT.

BY CONTRACTOR
STA. 2+45 ±, 10' RT.
FURNISH AND INSTALL
1- 8" TEE (F)
1- 8" ADAPTOR BK. (M,J,F)

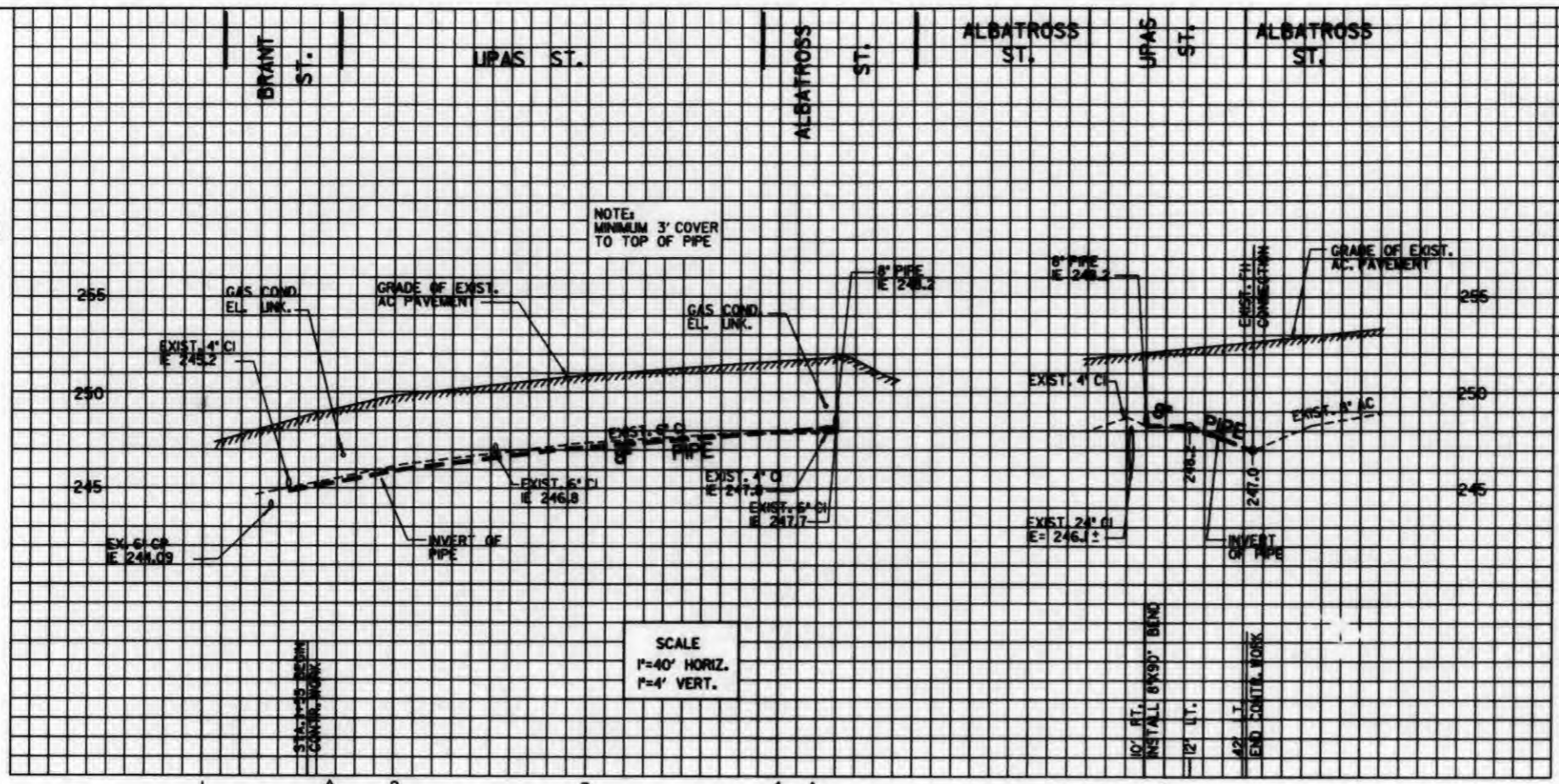
1- 8" VALVE RT. (F)
1- 8"X6" RED. RT. (F)
1- 6" ADAPTOR RT. (F,M,J)
CLOSE NEW VALVE RT.
(SEE DETAIL 'B')

③ BY CITY FORCES
AHEAD OF CONTRACTOR
STA. 4+25 ±, 20' RT.
CUT AND PLUG (SYNCHRONIZE
W/VALVE CLOSING IN
STA. 4+30 ±, 42" LT. ON ④)
AFTER NEW MAIN HAS
BEEN ACCEPTED, MAKE
CONNECTION, OPEN VALVE RT.
(SYNCHRONIZE W/VALVE OPENING
IN STA. 4+30 ±, 42" LT. ON ④)
(SEE DETAIL 'C')

BY CONTRACTOR
STA. 4+25 ±, 10' RT.
FURNISH AND INSTALL
1- 8" TEE (F)
1- 8" VALVE BK. (F)
1- 8" ADAPTOR BK. (M,J,F)
1- 8" VALVE RT. (F)
1- 8"X4" RED. RT. (F)
1- 4" ADAPTOR RT. (F,M,J).
CLOSE VALVE RT.
(SEE DETAIL 'C')

④ BY CITY FORCES
AHEAD OF CONTRACTOR
STA. 4+30 ±, 42" LT.
CLOSE VALVE (SYNCHRONIZE
W/ CUT AND PLUG IN
STA. 4+25 ±, 20' RT. ON ③)
AFTER NEW MAIN HAS
BEEN ACCEPTED
REMOVE EXIST. 8"X6" RED.
MAKE CONNECTION
OPEN VALVE (SYNCHRONIZE
W/VALVE OPENING IN
STA. 4+25 ±, 10' RT. ON ③)
(SEE DETAIL 'C')

BY CONTRACTOR
STA. 4+30 ±, 10' RT.
FURNISH AND INSTALL
1- 8" VALVE LT. (F)
1- 8" ADAPTOR LT. (F,M,J)
(SEE DETAIL 'C')



SCALE
1"=40' HORIZ.
1"=4' VERT.

COORDINATE TABLE			
NO.	NORTHING	EASTING	DESCRIPTION
650	N21000.52	E178365.06	C INTERSECTION
651	N210090.51	E178370.06	8" TEE
652	N210090.29	E178470.06	8"X6" TEE
653	N210099.85	E178645.50	C INTERSECTION
654	N210089.92	E178650.06	8" TEE
655	N210089.90	E178655.06	8"X90° BEND
656	N210141.89	E178656.22	8" CONN. TO VALVE

PROPOSED PIPE DATA TABLE				
NO.	Δ/BEARING	RADIUS	LENGTH	REMARKS
1	N01°16'46"E	18'	18'	6" PIPE BY CITY
2	N89°52'42"W	10'	10'	8" PIPE BY CITY
3	N89°52'42"W	100'	100'	8" PIPE BY CONTRACTOR
4	N01°16'46"E	8'	8'	6" PIPE BY CITY
5	N89°52'42"W	180'	180'	8" PIPE BY CONTRACTOR
6	N89°52'42"W	4'± SPOOL	4'	8" PIPE BY CONTRACTOR
7	N01°16'46"E	42'	42'	8" PIPE BY CONTRACTOR
8	N01°16'46"E	10'	10'	8" PIPE BY CITY
9	N00°00'00"E	50'	50'	8" PIPE BY CONTRACTOR

REFERENCE NOTE:
100' SCALE MAP: 210-1716
GATE BOOK PG. F-19
THOMAS BROS. MAP BOOK PG. 1269
S.D.G. & E. N/A
GAS BOOK PG. 2-232, 2-240
PACIFIC BELL: N/A
COX CABLE: N/A

IMPROVEMENTS:
WATER: 592-L, 12308-4-D, 7504-W
2706-D, 22706-18-D
SEWER: 2487-L
STORM DRAIN:

BENCH MARK:
B.M. = NEBP UPAS AND ALBATROSS ST.
MSL: EL. 252.079'

FIELD NOTES:
WENTWORTH, 210-1716 W.O. 18021, MAR. 16, '89
REYNARD WAY AND BROOKES AVE.

RETIREMENT:
347.64' 6" CI YR. LNK.

HYDRAULIC GRADE LINE:
536

WATER & SEWER GROUP 486			
UPAS ST.			
BRANT ST. TO ALBATROSS ST.			
CITY OF SAN DIEGO, CALIFORNIA ENGINEERING AND CAPITAL PROJECTS DEPARTMENT SHEET 18 OF 53 SHEETS		WATER NO. 181071 SEWER NO. 171391	
DATE: 5-7-98		PROJECT ENGINEER: [Signature]	
DESCRIPTION	BY	APPROVED	DATE
ORIGINAL	FS/PM	[Signature]	07/01/98
CONTRACTOR: [Signature]		CONTROL CERTIFICATION	
DATE STARTED: 08-2-98		210-1713	
DATE COMPLETED: 08-2-98		LAMBERT COORDINATES	
		25842-18-D	

AS-BUILT

FILMED FROM THE ORIGINAL
BEST QUALITY OBTAINABLE

UPAS ST.