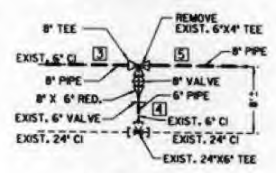
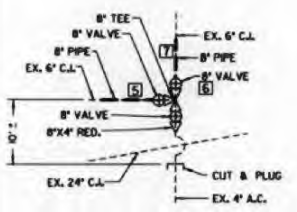


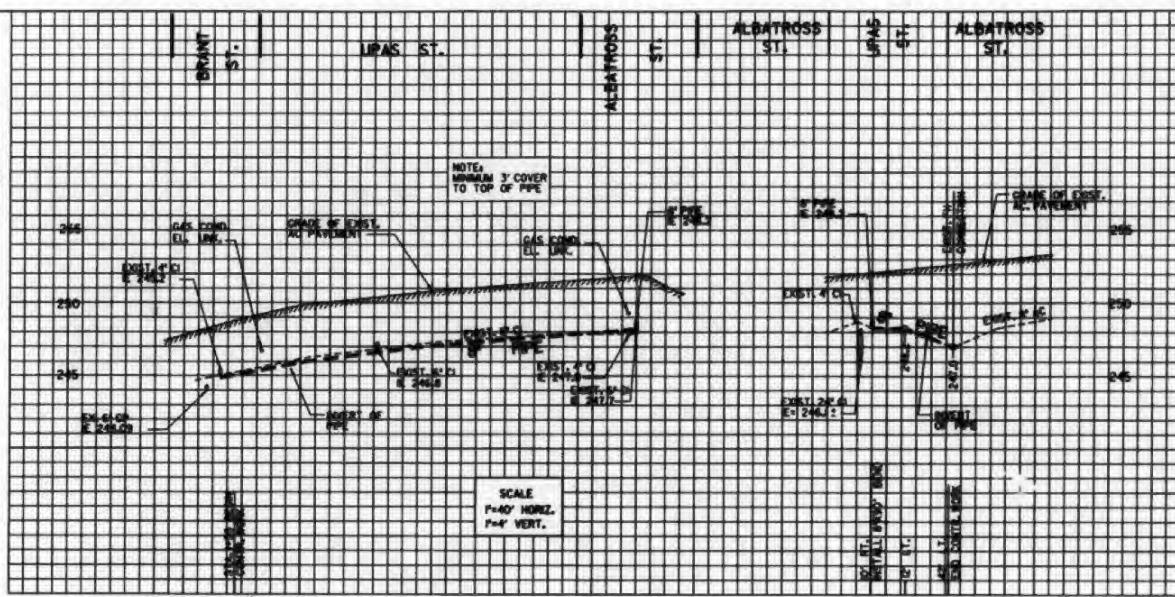
DETAIL "A"
SCALE: NONE



DETAIL "B"
SCALE: NONE



DETAIL "C"
SCALE: NONE



COORDINATE TABLE

NO.	NORTHING	EASTING	DESCRIPTION
1	240000.52	1778365.06	4" INTERSECTION
2	240000.50	1778370.06	8" TEE
3	240000.49	1778470.06	8" X 6" TEE
4	240000.48	1778445.50	4" INTERSECTION
5	240000.32	1778650.06	8" TEE
6	240000.30	1778655.06	8" X 6" BEND
7	240000.29	1778655.22	8" X 6" BEND

PROPOSED PIPE DATA TABLE

NO.	Δ/BEARING	RADIUS	LENGTH	REMARKS
1	N0° 16' 46" E	80'	10'	8" PIPE BY CITY
2	N87° 52' 42" W	10'	10'	8" PIPE BY CITY
3	N87° 52' 42" W	100'	100'	8" PIPE BY CONTRACTOR
4	N0° 16' 46" E	8'	8'	6" PIPE BY CITY
5	N87° 52' 42" W	180'	180'	8" PIPE BY CONTRACTOR
6	N87° 52' 42" W	4'	4'	SPPOOL 8" PIPE BY CONTRACTOR
7	N0° 16' 46" E	42'	42'	8" PIPE BY CONTRACTOR
8	N0° 16' 46" E	10'	10'	8" PIPE BY CITY
9	N00° 00' 00" E	50'	50'	8" PIPE BY CONTRACTOR

REFERENCE NOTE:
100' SCALE MAP, 20-176 GATE BOOK PG. 4 F-9 THOMAS BROS. MAP BOOK PG. 1269 S.D.G. & E. N/A GAS BOOK PG. 2-232, 2-240 PACIFIC BELL, N/A COX CABLE, N/A

IMPROVEMENTS:
WATER 592-L, 12308-4-D, 7504-W 2706-D, 22706-8-D
SEWER 2487-L
STORM DRAIN

BENCH MARK:
B.M. = NEIP UPAS AND ALBATROSS ST.
M.S.L. EL. 252.079'

FIELD NOTES:
WENTWORTH, 20-176 B.L. 1802, MAR. 16, '89 REYNARD BAY AND BROOKS AVE.

RETIREMENT:
347.64' 6" CI YR. LNK.
HYDRAULIC GRADE LINE J 538

① BY CITY FORCES
AHEAD OF CONTRACTOR
STA. 1+45 ±, 10' RT.
FURNISH AND INSTALL
1- 8" X 6" TEE (F)
1- 8" VALVE AND (F)
1- 8" ADAPTOR AND (F, M, J)
1- 6" VALVE RT. (F)
1- 6" ADAPTOR RT. (F, M, J)
CLOSE VALVE AND.
STA. 1+45 ±, 28' RT.
REMOVE EXIST. 6" X 4" RED
AND EXIST. 6" VALVE.
AFTER NEW MAN HAS BEEN
ACCEPTED MAKE CONNECTION
FROM WHERE EXIST. 6" VALVE
WAS REMOVED TO 8" X 6" TEE
AT STA. 1+45 ±, 10' RT.
OPEN VALVE AND.
(SEE DETAIL "A")

② BY CITY FORCES
AHEAD OF CONTRACTOR
STA. 2+45 ±, 15' RT.
CLOSE EXIST. 6" VALVE
AFTER NEW MAN HAS BEEN
ACCEPTED, REMOVE EXIST. 6" VALVE
MAKE CONNECTION FROM 8" X 6" RED.
TO EXIST. 24" X 6" TEE @ 2+45 ±, 18' RT.
OPEN NEW VALVE RT.
(SEE DETAIL "B")

BY CONTRACTOR
STA. 2+45 ±, 10' RT.
FURNISH AND INSTALL
1- 8" TEE (F)
1- 8" ADAPTOR BK. (M, J, F)

1- 8" VALVE RT. (F)
1- 8" X 6" RED. RT. (F)
1- 6" ADAPTOR RT. (F, M, J)
CLOSE NEW VALVE RT.
(SEE DETAIL "B")

③ BY CITY FORCES
AHEAD OF CONTRACTOR
STA. 4+25 ±, 20' RT.
CUT AND PLUG (SYNCHRONIZE
W/ VALVE CLOSING IN
STA. 4+30 ±, 42' LT. ON ④)
AFTER NEW MAN HAS
BEEN ACCEPTED, MAKE
CONNECTION OPEN VALVE RT.
ISYNCHRONIZE W/ VALVE OPENING
IN STA. 4+30 ±, 42' LT. ON ④)
(SEE DETAIL "C")

BY CONTRACTOR
STA. 4+25 ±, 10' RT.
FURNISH AND INSTALL
1- 8" TEE (F)
1- 8" VALVE BK. (F)
1- 8" ADAPTOR BK. (M, J, F)
1- 8" VALVE RT. (F)
1- 8" X 4" RED. RT. (F)
1- 8" ADAPTOR RT. (F, M, J)
CLOSE VALVE RT.
(SEE DETAIL "C")

④ BY CITY FORCES
AHEAD OF CONTRACTOR
STA. 4+30 ±, 42' LT.
CLOSE VALVE (SYNCHRONIZE
W/ CUT AND PLUG IN
STA. 4+25 ±, 20' RT. ON ③)
AFTER NEW MAN HAS
BEEN ACCEPTED
REMOVE EXIST. 8" X 6" RED.
MAKE CONNECTION
OPEN VALVE (SYNCHRONIZE
W/ VALVE OPENING IN
STA. 4+25 ±, 10' RT. ON ③)
(SEE DETAIL "C")

BY CONTRACTOR
STA. 4+30 ±, 10' RT.
FURNISH AND INSTALL
1- 8" VALVE LT. (F)
1- 8" ADAPTOR LT. (F, M, J)
(SEE DETAIL "C")

WATER & SEWER GROUP 486
UPAS ST.
BRANT ST. TO ALBATROSS ST.

NO.	DATE	BY	APPROVED	SCALE	REVISION
1	1/13/88	J. J. [Signature]	[Signature]	AS-BUILT	

CITY OF SAN DIEGO, CALIFORNIA
ENGINEERING AND CAPITAL PROJECTS DEPARTMENT
SHEET 8 OF 52 SHEETS

CONTRACTOR: [Signature]
DATE STARTED: 1/13/88
DATE COMPLETED: 1/13/88

AS-BUILT

FILED FROM THE ORIGINAL
BEST QUALITY OBTAINABLE



UPAS ST.