

PROPOSED PIPE DATA TABLE

NO.	Δ/BEARING	RADIUS	LENGTH	REMARKS
(1)	N89° 3'59\"/>			

COORDINATE TABLE

NO.	NORTHING	EASTING	DESCRIPTION
(125)	N251016.43	E1754869.22	8\"/>

SCALE
 1\"/>

NOTE:
 CYPRESS AVE. SHALL BE HIGHLIGHTED BY CITY FORCES PRIOR TO BEGINNING OF CONSTRUCTION. CITY TO FURNISH HIGHLINING MATERIAL AND MAKE ALL CONNECTIONS.

REFERENCE:
 BENCH MARK: SWBP PARK BLVD. & UPAS ST. EL. = 301.803' MSL
 FIELD NOTES: HOLT 12-21-90, 208-1725, WD 181651
 WATER: 2416-L
 SEWER: 14600-3-D, 14600-8-D
 STORM DRAIN:
 GAS: 2-204, 2-203, II-309, 2-201, II-277, II-330, II-329, II-278
 TELEPHONE:
 WATER GATE BOOK: G-19, H-19
 SEWER GATE BOOK: G-19, H-19
 100' SCALE: 210-1722
 THOMAS BROS.: 60, D, E-4

RETIREMENT:
 570' OF EX. 6\"/>

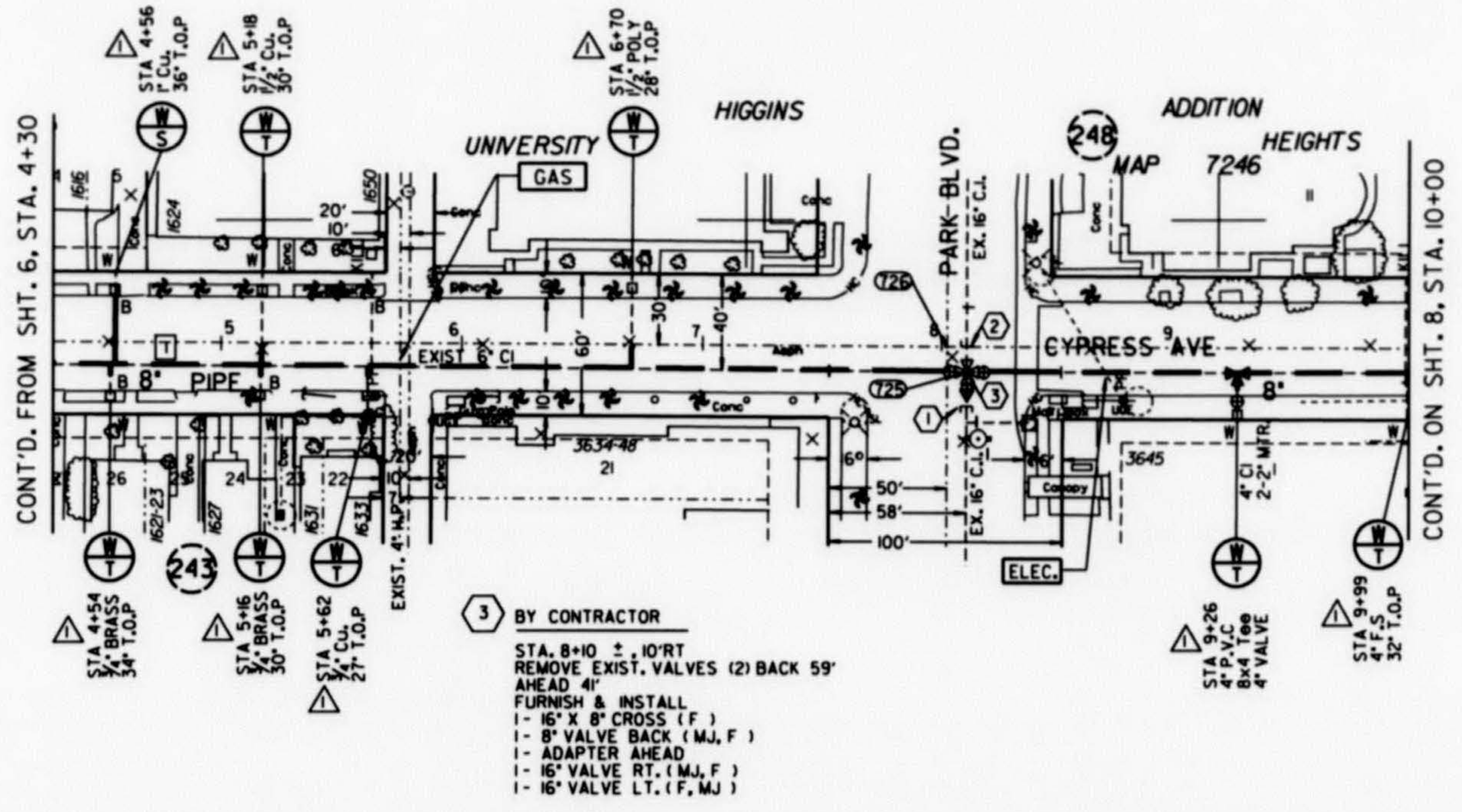
WATER AND SEWER GROUP 510
 LEAD SERVICE REPLACEMENT
 CYPRESS AVENUE
 STA. 4 + 30 TO STA. 10+00

CITY OF SAN DIEGO, CALIFORNIA
 UTILITIES DEPARTMENT
 SHEET 7 OF 63 SHEETS

WATER R.A. 181651	SEWER R.A. 172561
UTILITIES DIRECTOR	UTILITY DIRECTOR
DATE 7-22-92	DATE
BY	APPROVED
DATE	FILED
DESCRIPTION ORIGINAL	WJS/DB Torvald
DATE 1/21/92	DATE 2, 1992
APPROVED PER CITY INSPECTOR	FM 4-9-96
CONTROL CERTIFICATION	210-1725
LAMBERT COORDINATES	26328-7-D

CONTRACTOR DELINCO CORP. DATE STARTED 5-03-93
 INSPECTOR CARLEEN GRANHAM DATE COMPLETED 12-17-93

- 1 BY CITY FORCES
 AHEAD OF CONTRACTOR STA. 8+10 ± .45' RT CUT & PLUG RECONNECT AFTER NEW MAIN HAS BEEN ACCEPTED
- 2 BY CITY FORCES
 AHEAD OF CONTRACTOR STA. 8+10 ± .15' LT CUT & PLUG RECONNECT AFTER NEW MAIN HAS BEEN ACCEPTED



- 3 BY CONTRACTOR
 STA. 8+10 ± .10' RT REMOVE EXIST. VALVES (2) BACK 59' AHEAD 4'
 FURNISH & INSTALL
 1- 16\"/>



CYPRESS AVE.

AS-BUILT

FILMED FROM THE ORIGINAL, BEST QUALITY OBTAINABLE, EXCESSIVE GRAY BACKGROUND MAY CAUSE A POOR QUALITY REPRODUCTION

