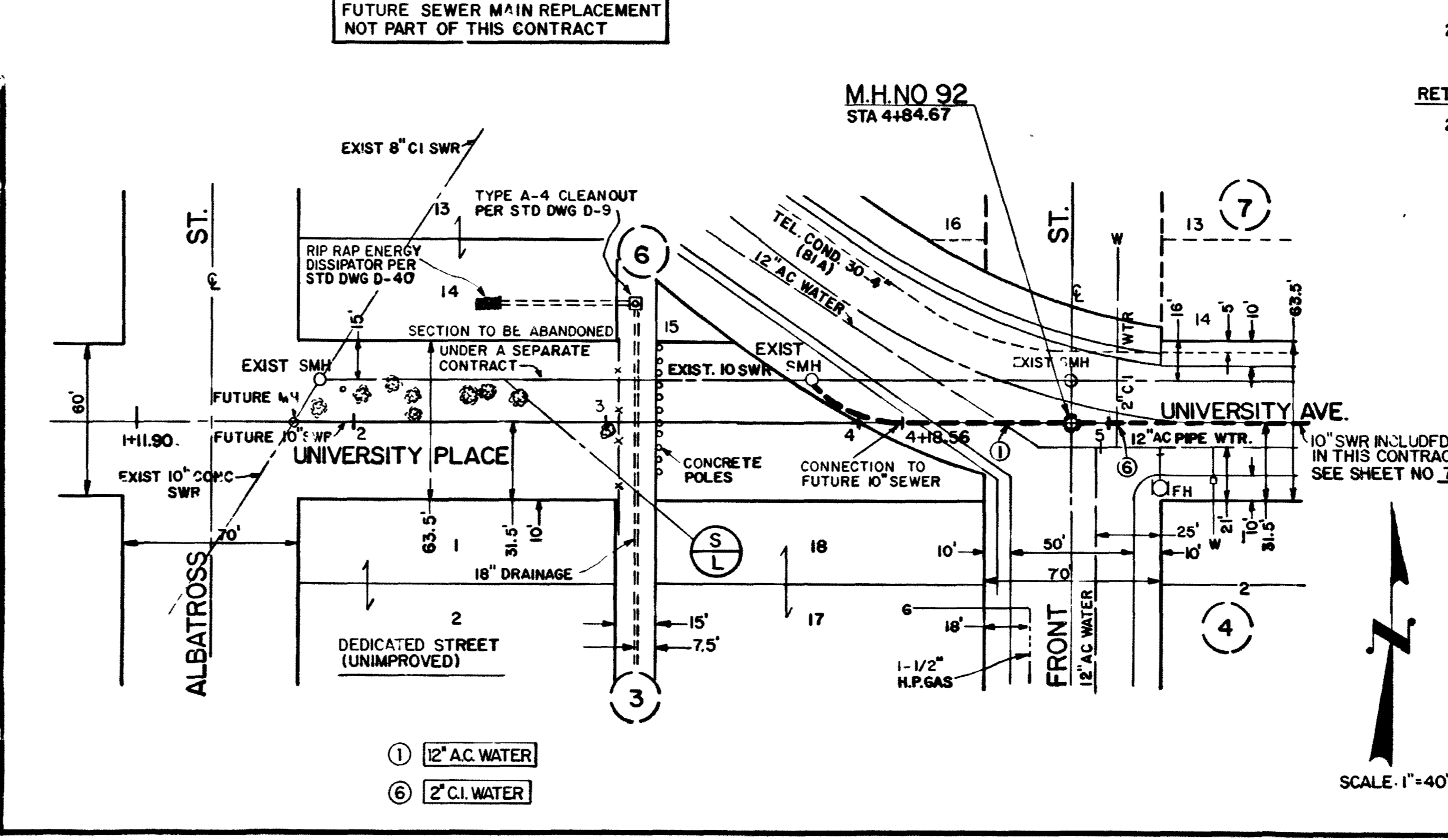
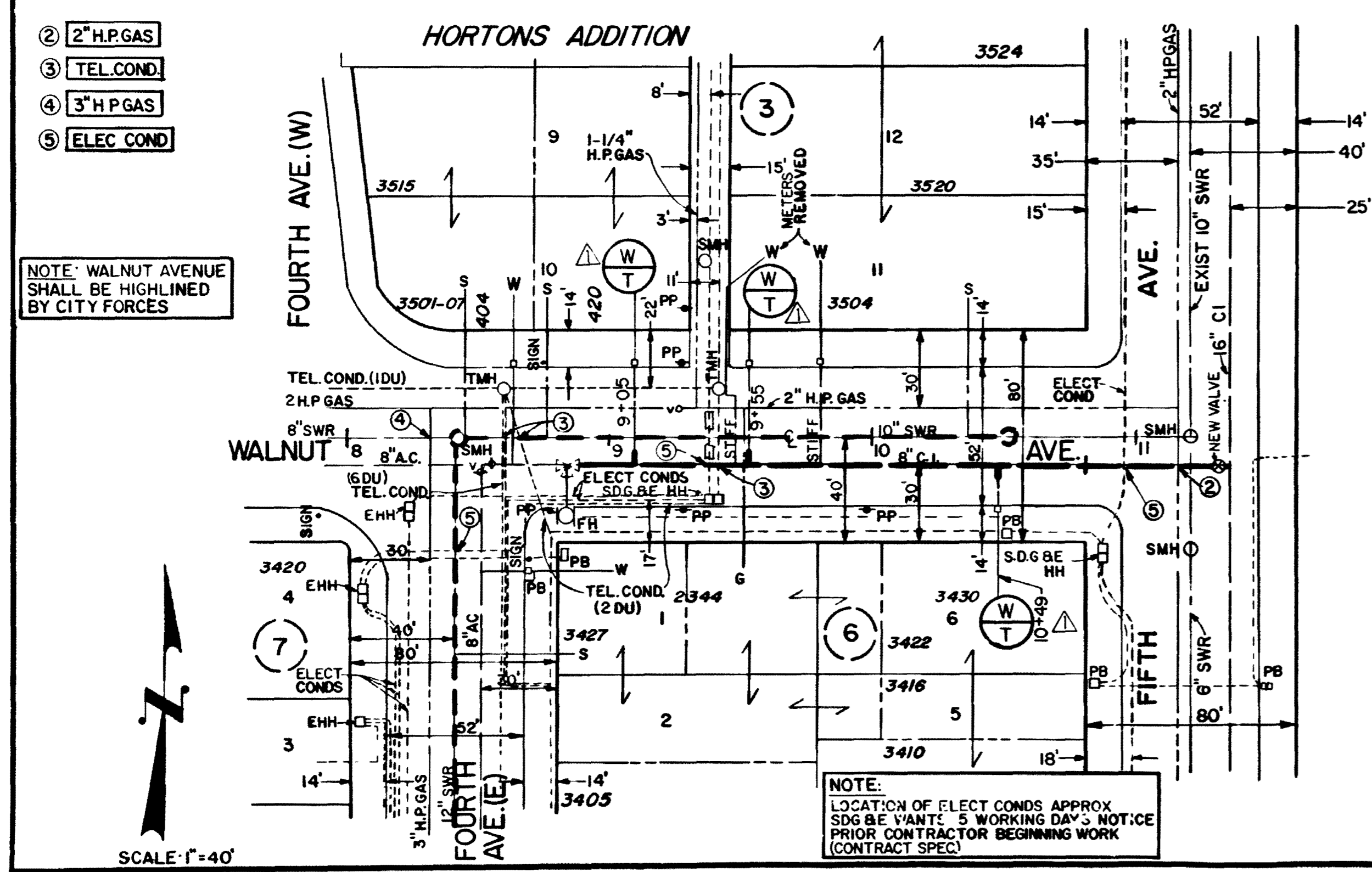
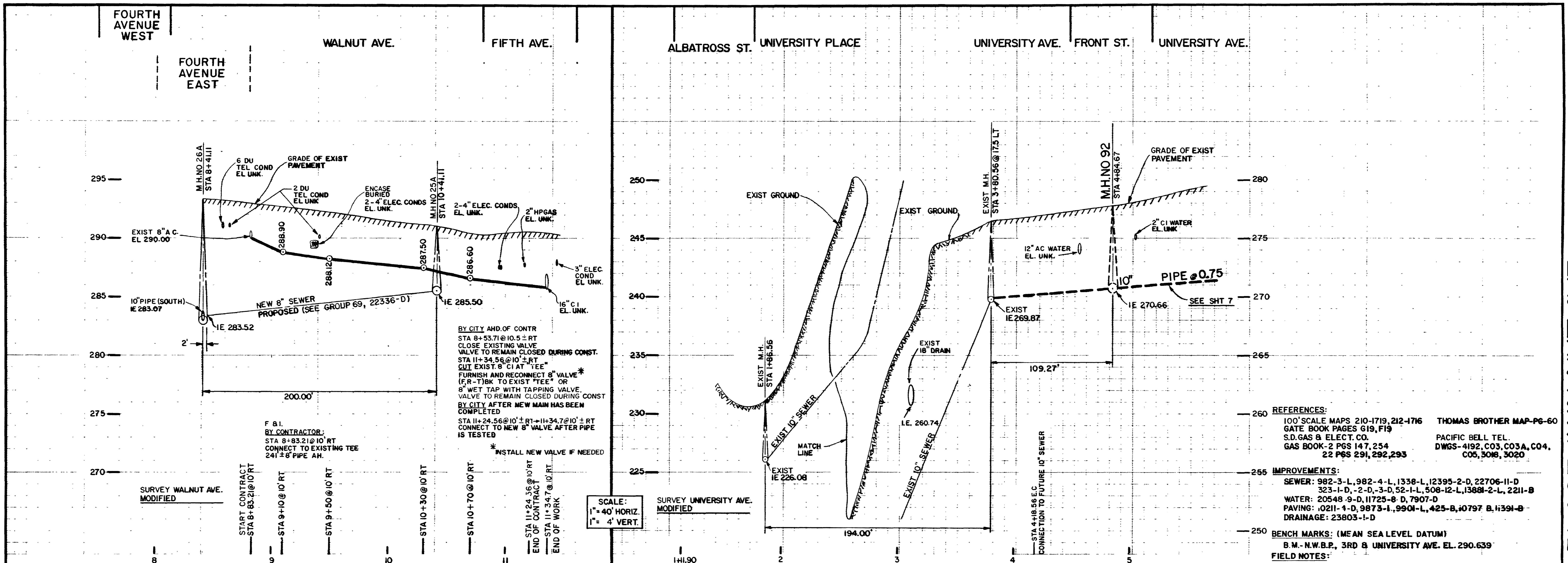


UNIVERSITY PLACE / WALNUT AVE.



**REFERENCES:**  
 100' SCALE MAPS 210-1719, 212-1716 THOMAS BROTHER MAP-P6-60  
 GATE BOOK PAGES G19, F19  
 S.D. GAS & ELECT. CO. PACIFIC BELL TEL.  
 GAS BOOK-2 PGS 147, 254 DWGS-4192, C03, C03A, C04,  
 22 PGS 291, 292, 293 COS, 308, 3020

**IMPROVEMENTS:**  
 SEWER: 982-3-L, 982-4-L, 1338-L, 12395-2-D, 22706-11-D  
 323-1-D, -2-D, -3-D, 52-1-L, 508-12-L, 1388-2-L, 2211-B  
 WATER: 20548-9-D, 11725-8-D, 7907-D  
 PAVING: 10211-1-D, 9873-1, 9901-L, 425-B, 10797-B, 11391-B  
 DRAINAGE: 23803-1-D

**BENCH MARKS: (MEAN SEA LEVEL DATUM)**  
 B.M.-N.W.B.P., 3RD & UNIVERSITY AVE. EL. 290.639

**FIELD NOTES:**  
 1. CROSS SECTION, 212-1716 FRONT ST. TO ALBATROSS ST., KELLEY  
 W.O. 170151, SHT 1 THRU 4 OF 4, 12-23-87 (REVISED)  
 2. CROSS SECTION, 208-4719, WALNUT AVE. BETWEEN 4TH & 5TH AVE.  
 KELLEY  
 W.O. 170151, SHT 1 THRU 5 OF 5, 08-18-87

**RETIREMENT:**  
 24\"/>

<b>SEWER AND WATER GROUP 68</b>		WATER W.O. 180541
<b>UNIVERSITY PLACE 10\"/&gt; </b>		SEWER W.O. 170151
ALBATROSS ST. TO 240' EAST OF ALBATROSS ST.		ENR. SUPERINTENDENT
WALNUT AVE. 8\"/>		CONTROL CERTIFICATION
FOURTH AVE. (E) TO FIFTH AVE.		212-1716, 210-1719
CITY OF SAN DIEGO, CALIFORNIA		LIBRARY COORDINATES
UTILITIES DEPARTMENT		22708-8-D
SHEET 8 OF 18 SHEETS		
DESCRIPTION	BY	APPROVED
DATE	DATE	DATE
ORIGINAL	MH/LS	2/2/89
AS-BUILT PER	HKM	SA 3492
CITY INSPECTOR		
CONNECTIONS BY CITY FORCES		
CONTRACTOR QUARTE & BANNING DATE STARTED 8/11/89		
INSPECTOR SAFWAT ABUZAID DATE COMPLETED 7/6/90		

AS-BUILT

