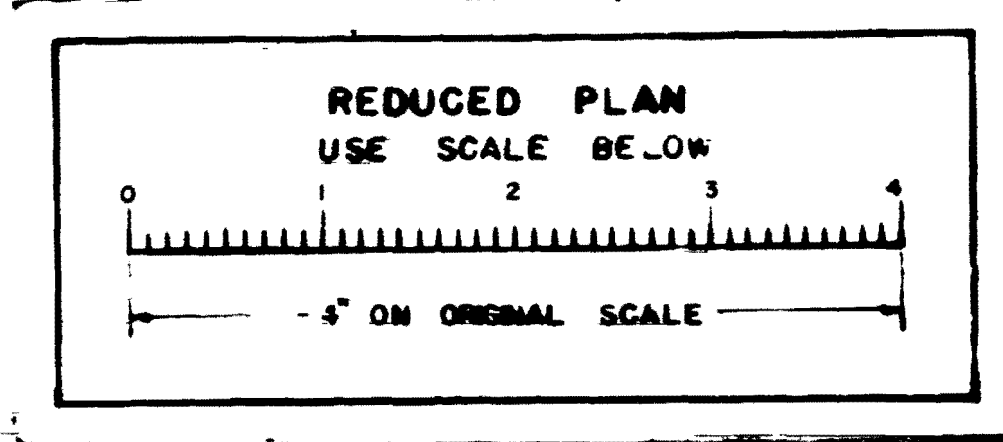
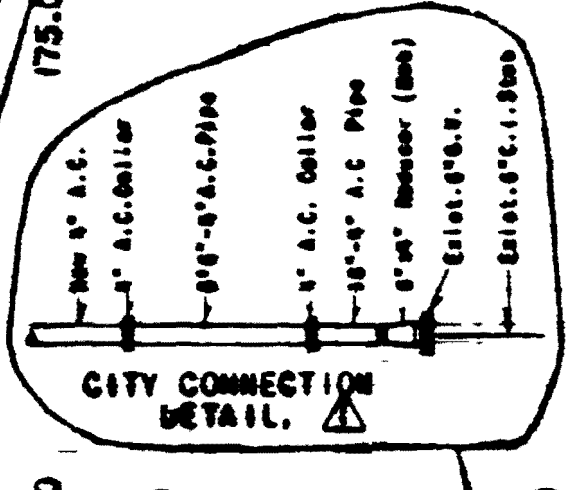
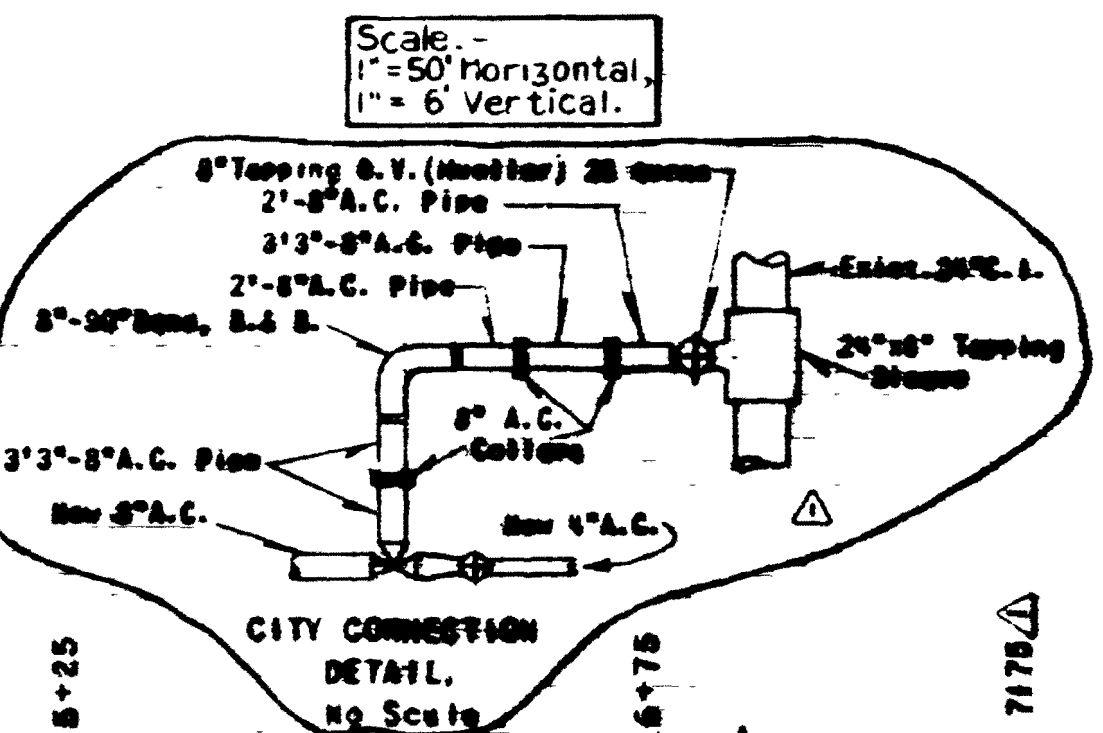
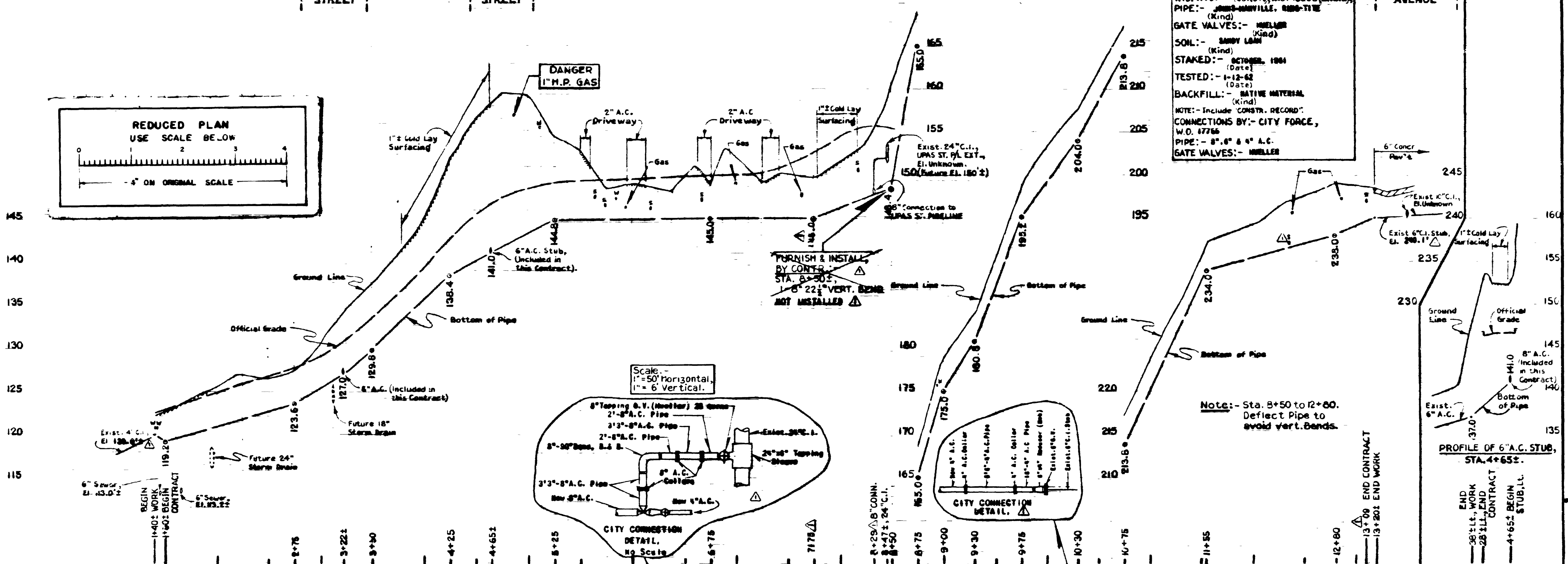


UNION STREET    IBIS STREET    MORTON STREET    THORN STREET    UPAS STREET    WALNUT STREET    IBIS STREET



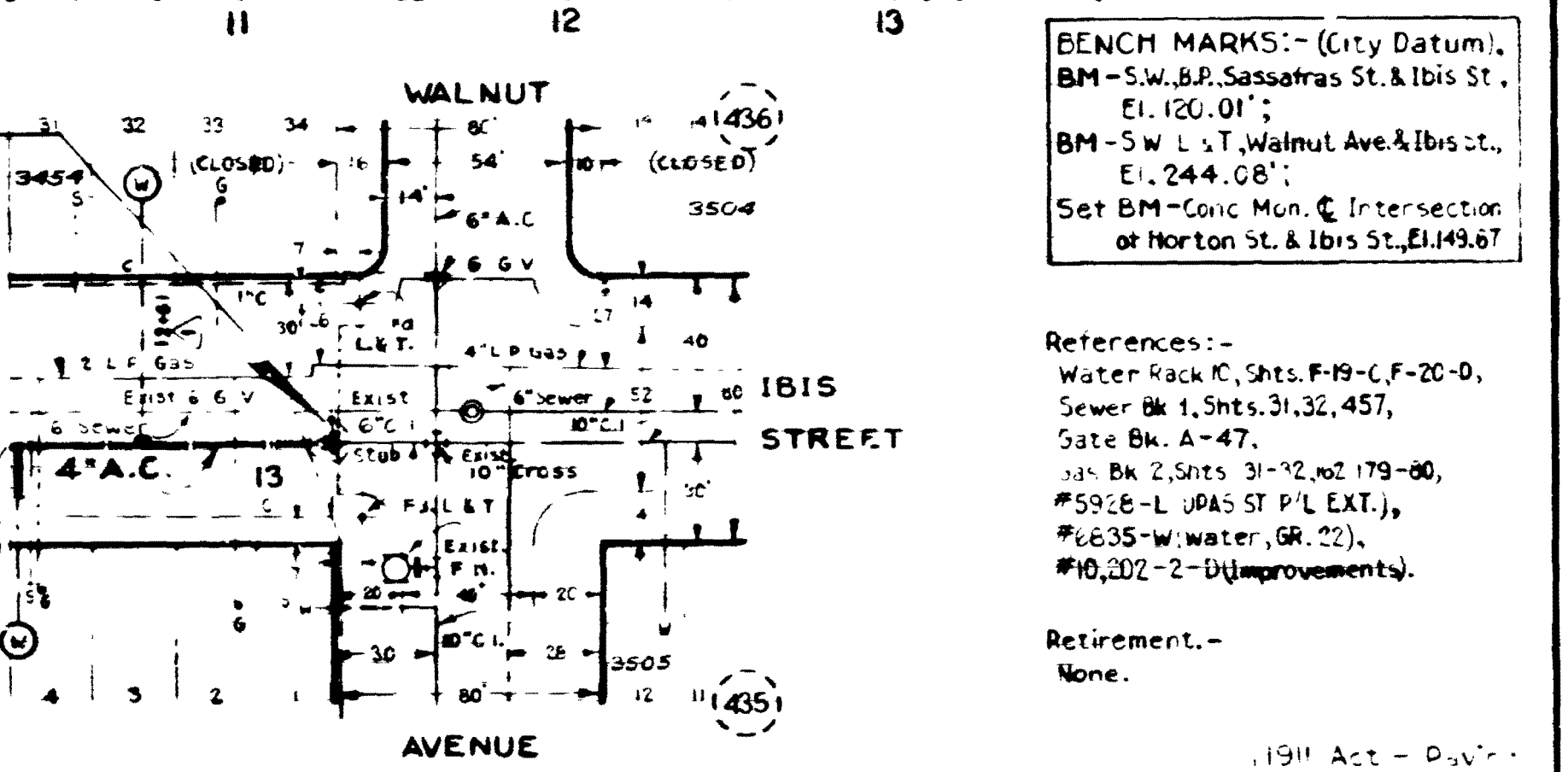
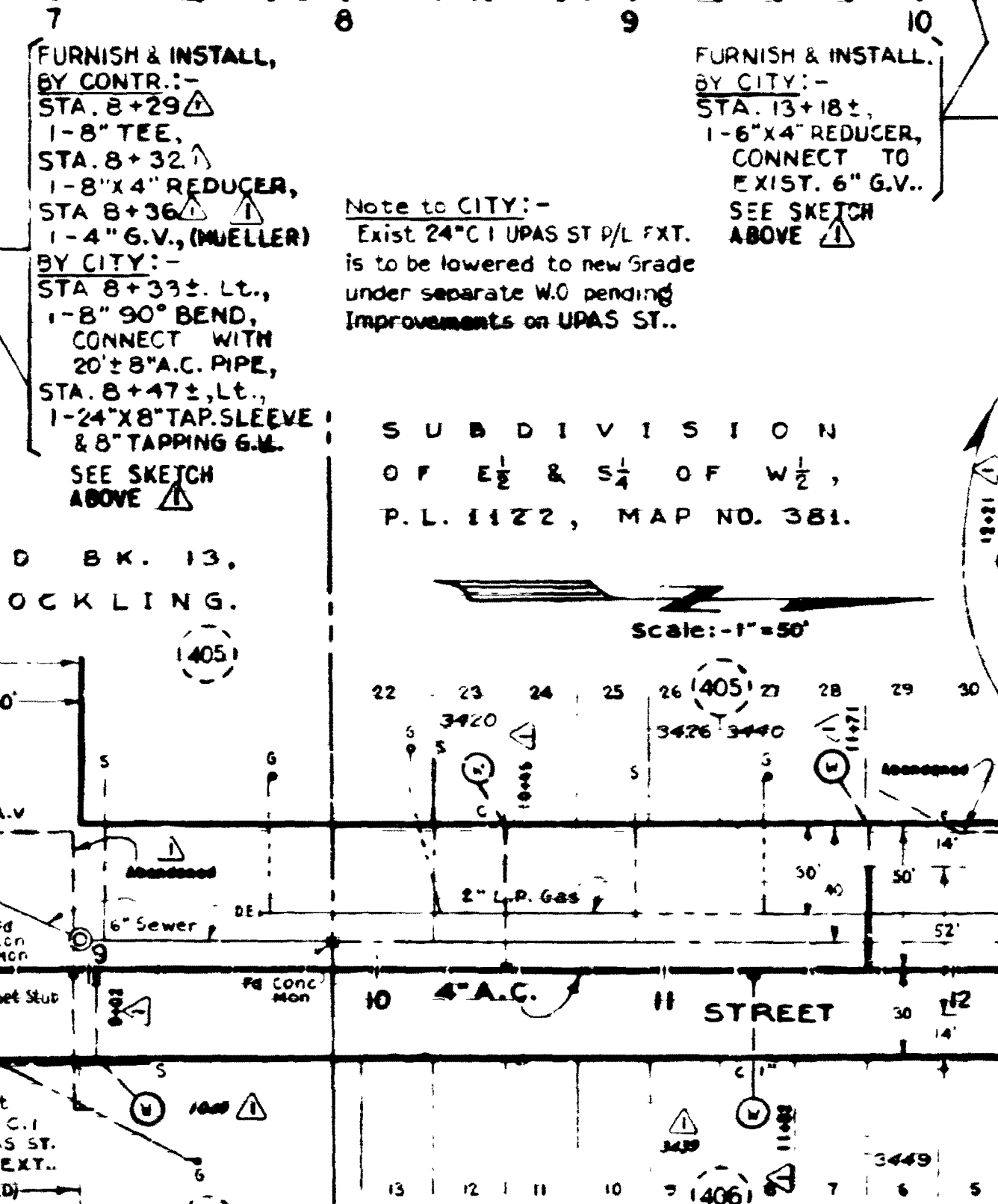
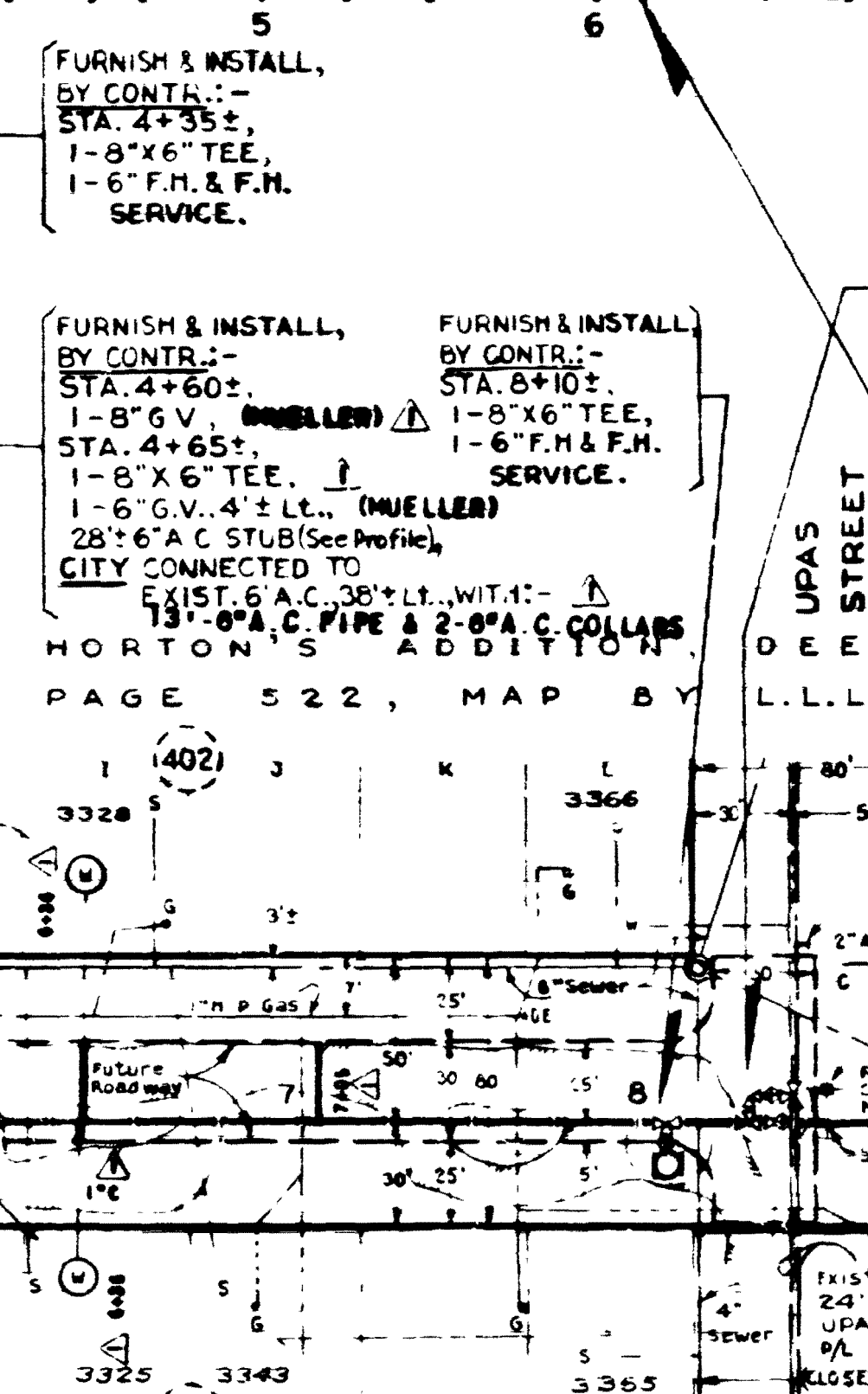
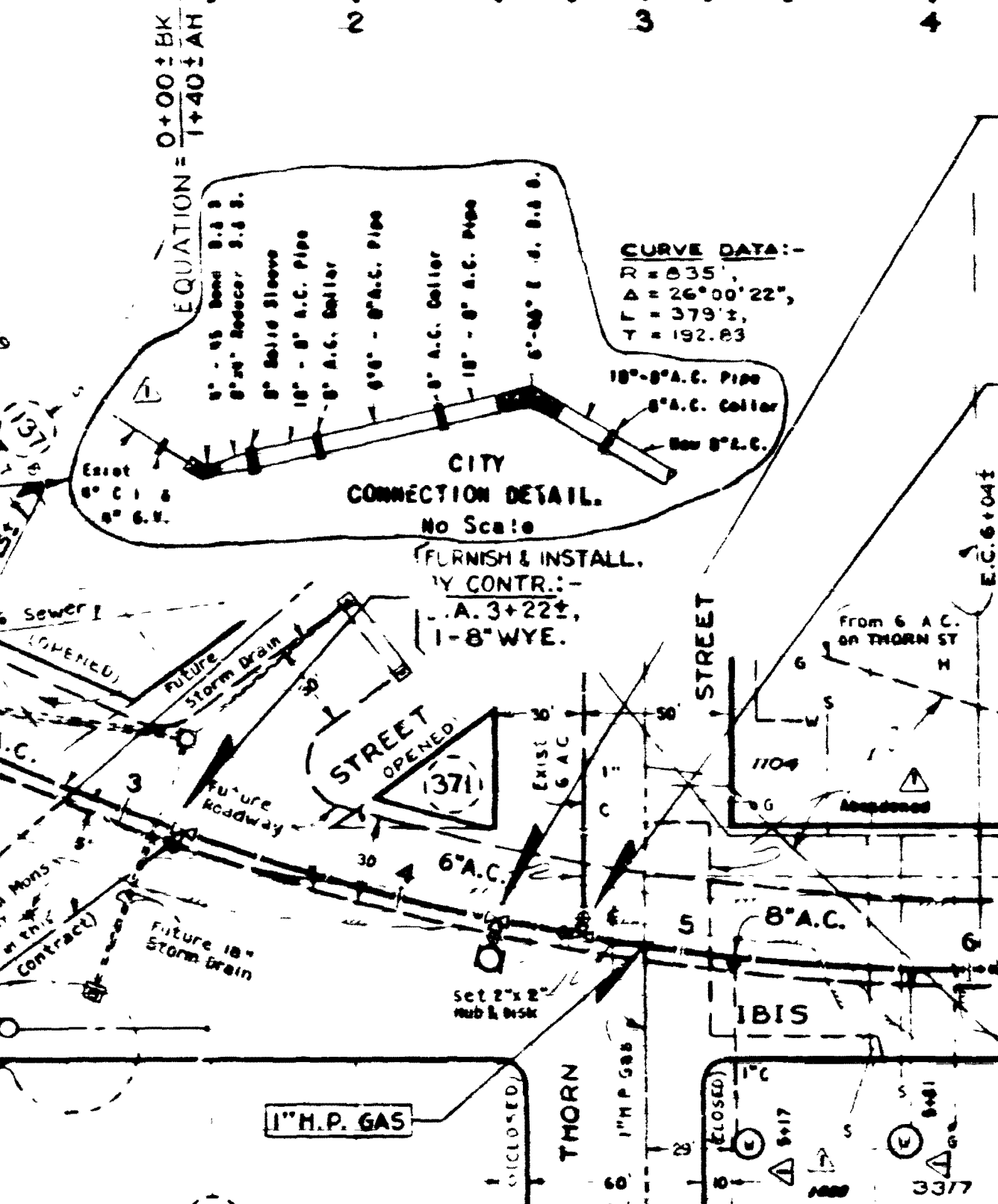
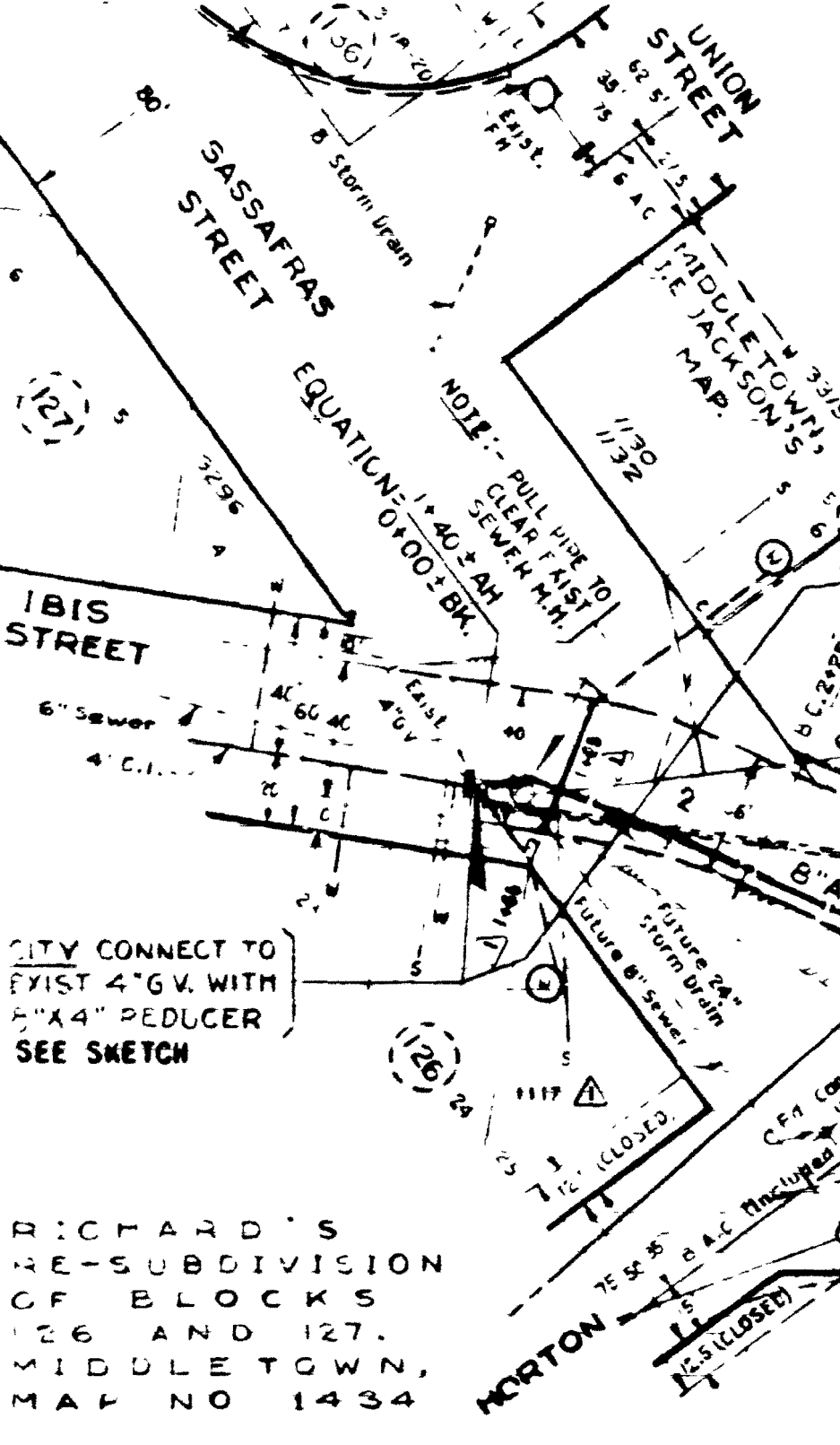
**AS BUILT DATA**  
 CONSTRUCTED BY: - W. W. HOFFMAN CO., INC.  
 W.D. 1778 (CONST.), W.D. 48258 (ENGR.),  
 PIPE: - JAMES-MANVILLE, 8000-TYPE  
 (Kind)  
 GATE VALVES: - MUELLER  
 (Kind)  
 SOIL: - SANDY LOAM  
 (Kind)  
 STAKED: - OCTOBER, 1964  
 (Date)  
 TESTED: - 1-12-62  
 (Date)  
 BACKFILL: - NATIVE MATERIAL  
 (Kind)  
 NOTE: - Include CONSTR. RECORD.  
 CONNECTIONS BY: - CITY FORCE,  
 W.D. 1778  
 PIPE: - 8", 6" & 4" A.C.  
 GATE VALVES: - MUELLER



Note: - Sta. 8+50 to 12+00. Deflect Pipe to avoid vert. bands.

**BENCH MARKS: - (City Datum).**  
 BM-S.W. B.P. Sassafras St. & Ibis St.,  
 El. 120.01'  
 BM-S.W. L.T. Walnut Ave. & Ibis St.,  
 El. 244.08'  
 Set BM-Conic Mon. @ Intersection  
 of Horton St. & Ibis St., El. 149.67'

References: -  
 Water Rack C, Shts. F-19-C, F-20-D,  
 Sewer Bk 1, Shts. 31, 32, 45, 7,  
 Gate Bk. A-47,  
 Gas Bk 2, Shts. 31-32, 179-80,  
 #5926-L UPAS ST. P.L. EXT.),  
 #635-W. WATER, GR. 22),  
 #10,302-2-D (Improvements).  
 Retirement: -  
 None.



RICHARD'S  
 RE-SUBDIVISION  
 OF BLOCKS  
 126 AND 127,  
 MIDDLETOWN,  
 MAP NO 1434

SUBDIVISION  
 OF E & S<sup>1</sup>/<sub>2</sub> OF W<sup>1</sup>/<sub>2</sub>,  
 P.L. 1122, MAP NO. 381.

GROUP 224  
 SASSAFRAS STREET 8\"/>

CITY OF SAN DIEGO ENGINEERING DEPARTMENT		SHEET 11 OF 13 SHEETS	
CHANGE	BY	DATE	APPROVAL
AS BUILT - PER IMPR. FILE # 17-112		8/18/64	
APPROVALS FOR		APPROVALS FOR	
WATER DEPT.	SEWERAGE	STREETS	TRAFFIC
PLUMBING DEPT.	DRAINAGE	CONTRACT	CONTROL
ELECTRICAL	HIGHWAY	DESIGNED	
STRUCTURAL	GRADES	10 234-11-D	
CONTR. S&S IMPR. W&P L.A. S&S			
FIELD BOOK F-19 & 20			

AS BUILT

SASSAFRAS & IBIS STS.