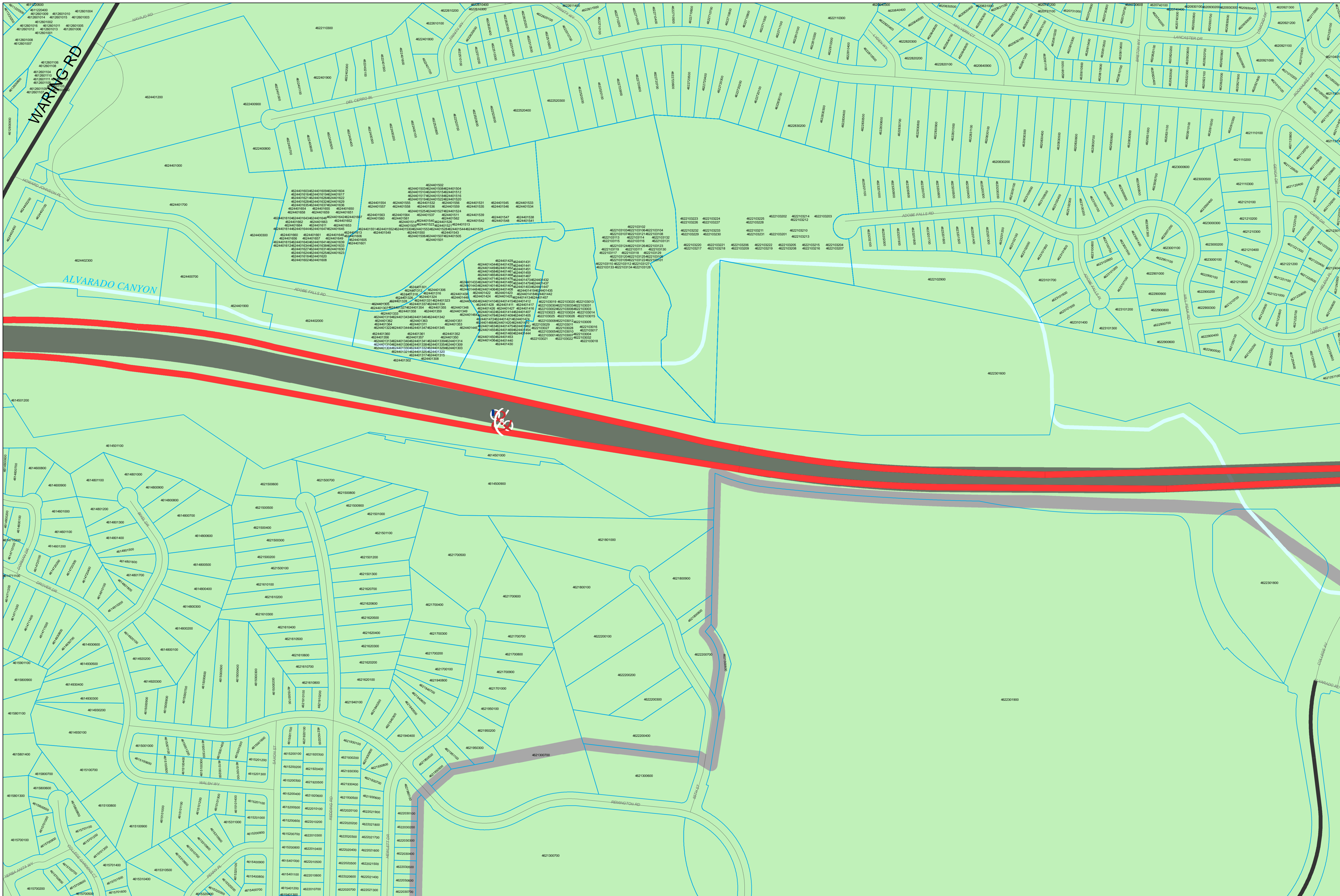
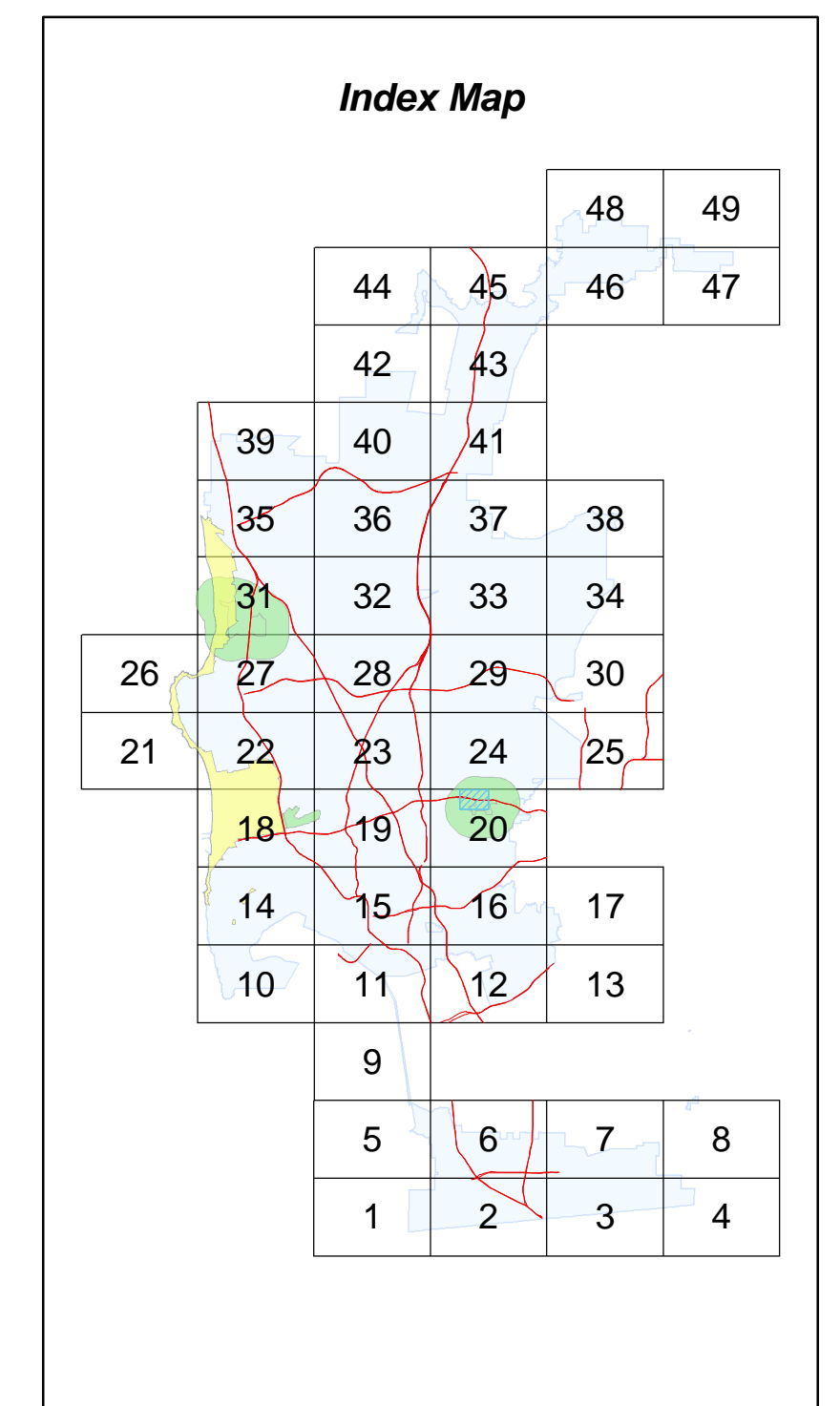


Campus Impact and Beach Impact Areas of the Parking Impact Overlay Zone (PIOZ)



Legend

- City of San Diego Boundary
- Community Plan Areas
- Parcels
- Beach Impact Areas
- Campus Impact Areas

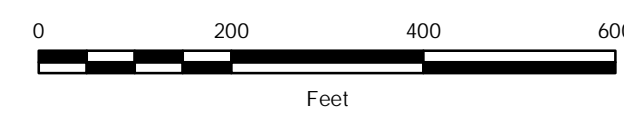


SanGIS Basemap Accuracy
 SanGIS Land (Lot) basemap data for the City of San Diego tested 20.7 horizontal accuracy at the 95% confidence level.
 This data meets the ASPRS Standard for Class 1 Map Accuracy at a scale of 1:12,000 (1"=1,000').
 This assessment assumes utilization of the data on a citywide basis. Localized data may exceed or fail to meet this accuracy with errors in excess of 100' possible.

Every reasonable effort has been made to assure the accuracy of this map. However, neither the SanGIS participants nor SanGIS Data Processing Corporation assume any liability arising from its use.
 THIS MAP IS PROVIDED WITHOUT WARRANTY OF ANY KIND, EITHER EXPRESS OR IMPLIED, INCLUDING, BUT NOT LIMITED TO, THE IMPLIED WARRANTIES OF MERCHANTABILITY AND FITNESS FOR A PARTICULAR PURPOSE.
 PROPRIETARY INFORMATION: The use of this information is pursuant to a sublicense agreement only. Any resale or retransmission of this information is prohibited, except in accordance with such sublicensing agreements.



City of San Diego
Development Services Department



GRID TILE: 1743222
 GRID SCALE: 200
 DATE: 4/30/2007