




NOTICE

DEVELOPMENT SERVICES DEPARTMENT

CITY OF SAN DIEGO - 1222 FIRST AVENUE, M.S. 501, SAN DIEGO, CALIFORNIA 92101

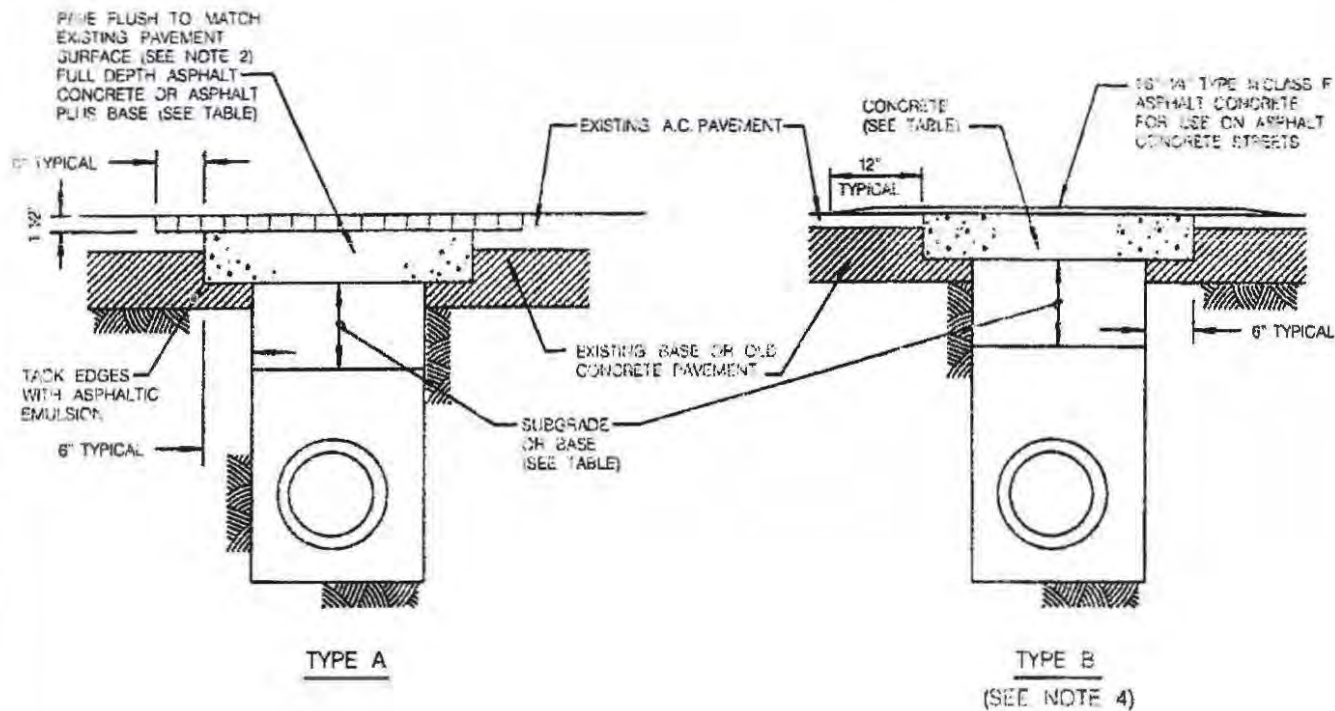
DATE: July 21, 2011
TO: Distribution
FROM: Julie Ballesteros, Deputy City Engineer 
SUBJECT: Revision to Trench Resurfacing Requirements

Effective immediately, the City of San Diego Standard Drawing Number SDG-107, "TRENCH RESURFACING FOR ASPHALT CONCRETE SURFACED STREETS", has been revised and published. This drawing is attached and can be found on the City's website at <http://www.sandiego.gov/engineering-cip/pdf/std draw06/sdg107.pdf>.

Where the previous standard drawing allowed the use of the Type B detail, (a concrete trench cap topped by a layer of Class F asphalt concrete) the revised standard drawing requires use of the Type A detail (full depth asphalt concrete trench cap and resurfacing) unless otherwise authorized by the City Engineer.

Effective immediately, all projects currently in construction and in plan review are subject to this revised standard drawing. Any exceptions to this standard for projects already under construction are subject to approval by the assigned City Resident Engineer.

Enclosure: Standard drawing for Trench Resurfacing for Asphalt Concrete Surfaced Streets.



	TYPE A		TYPE B
	ASPHALT	ASPHALT PLUS BASE	CONCRETE
1' X DESIGN	3/4" TYPE III CLASS B3	3/4" TYPE III CLASS B3 PLUS CLASS II BASE	560-C-3250
ALLEYS	8.0"	ASPHALT THICKNESS TO EQUAL	5.5"
LOCAL THROUGH 4 LANE COLLECTORS	10.0"	EXISTING PLUS 1", MIN 1" TO MAX 8"	7.0"
MAJOR OR GREATERS	12.0"	COMBINED ASPHALT PLUS BASE 18" MIN	9.0"

NOTES:

1. ANY STREET TRENCH 7 FEET IN WIDTH OR GREATER AND LONGER THAN 100 FEET IN OVERALL LENGTH SHALL BE RECONSTRUCTED WITH THE PAVEMENT SECTION FOR THE STREET CLASSIFICATION PER SCHEDULE "J" (SDG-112)
2. ASPHALT TRENCH CAPS IN STREETS NOT RECEIVING A FULL WIDTH OVERLAY PRIOR TO ACCEPTANCE SHALL BE MILLED AS SHOWN AND RESURFACED WITH 12" TYPE III CLASS C2 ASPHALT NO LESS THAN 30 DAYS AFTER INITIAL ASPHALT PLACEMENT.
3. 560-C-3250 CONCRETE TREATED WITH A MINIMUM 2% CALCIUM CHLORIDE SOLUTION IN ACCORDANCE WITH 201-1 OR 650-CW-4000 (W/O CC) CONCRETE MAY BE OPENED TO TRAFFIC 3 DAYS AFTER IT IS PLACED. 650-CW-4000 CONCRETE TREATED IN SAME MANNER (W/O CC) MAY BE OPENED TO TRAFFIC 24 HOURS AFTER IT IS PLACED. CONCRETE SPECIFIED BY ALTERNATE CLASS OR OTHERWISE CONTAINING FLY ASH IS NOT ALLOWED.
4. USE TYPE "A" UNLESS SPECIFIED OR AUTHORIZED OTHERWISE BY THE CITY ENGINEER.

REVISION	BY	APPROVED	DATE
ORIGINAL		K. CAPEY	1969
UPDATED	NA	A. OSWALD	1990

CITY OF SAN DIEGO - STANDARD DRAWING

**TRENCH RESURFACING FOR ASPHALT
CONCRETE SURFACED STREETS**

RECOMMENDED BY THE CITY OF SAN DIEGO
PLANNING COMMITTEE

[Signature]
COORDINATOR R.F.S. 65271 DATE

DRAWING NUMBER **SDG-107**