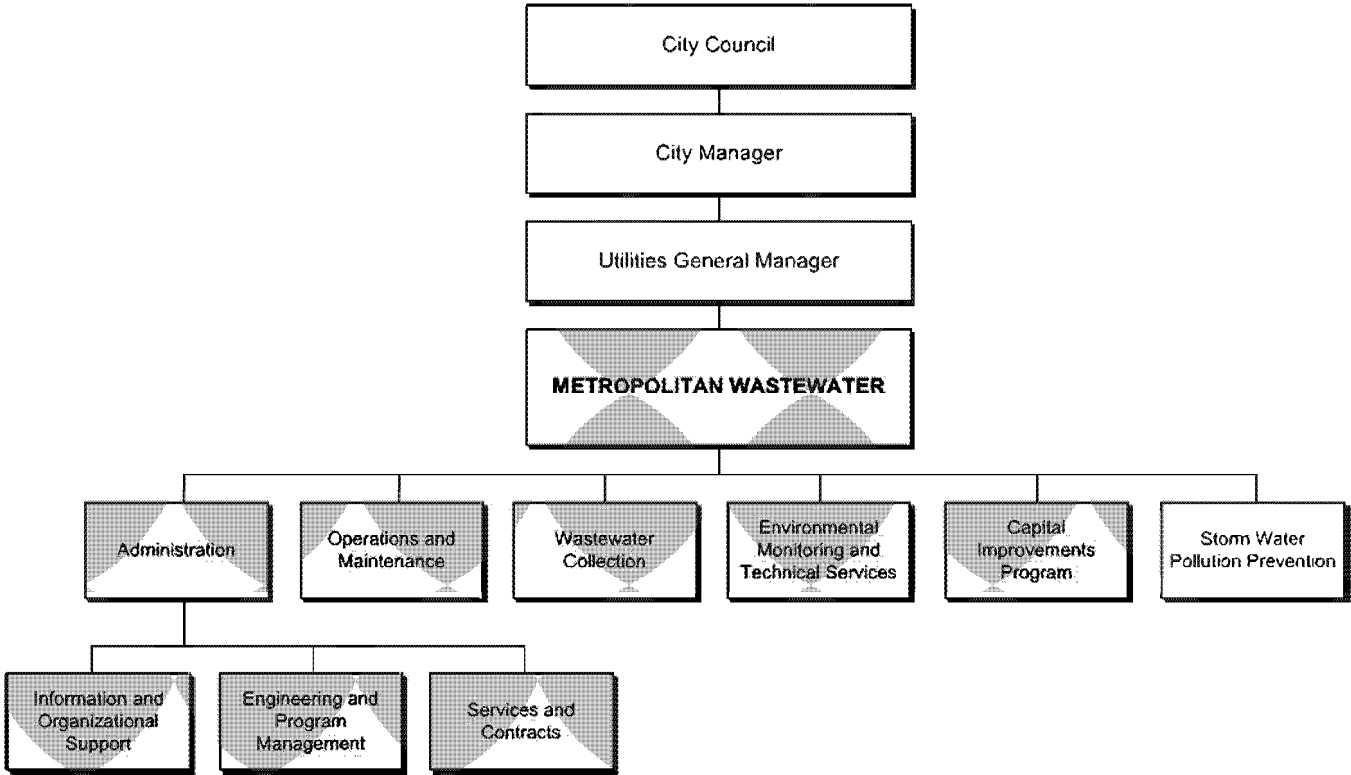


# Metropolitan Wastewater

---



# Metropolitan Wastewater



## Mission Statement

Provide the public with a safe, efficient, and cost-effective regional sewer system that protects the environment, supplements our limited water supply and meets regulatory standards.

## Department Description

The City of San Diego's Metropolitan Wastewater Department (MWWD) provides regional wastewater treatment and disposal services for approximately two million people living and working in 16 local cities and districts. This 450 square mile area is defined by Del Mar to the north, Alpine and Lakeside to the east, and the communities bordering Mexico to the south. MWWD manages all of the resources needed to operate and maintain the Metropolitan Sewerage System and provides for appropriate new infrastructure capacity to accommodate regional growth and economic vitality while protecting water quality and the environment. The Department is also responsible for operating and maintaining the Municipal Sewerage Collection System for the City of San Diego.

## Division/Major Program Description

### Administration

#### Information and Organizational Support

The Information and Organizational Support Division manages programs designed to facilitate the Department's mission. Such programs are focused on strategic planning, developing employee/organizational resources, fostering safe work environments and enabling the most appropriate technical solutions. Strategic planning channels departmental efforts toward continuous improvement of effective business practices. Employee/organizational resources provides personnel/management guidance and career development, and administers the Department's

# Metropolitan Wastewater

## Division/Major Program Description

### Administration (continued)

health/medical program. The safety and training coordinates training and provides safety oversight to foster a safe and productive work environment. Technology services manages the design, implementation and support of reliable technologies in a seamless consistent manner.

#### Engineering and Program Management

The Engineering and Program Management Division administers and implements the Metropolitan and Municipal Wastewater Master Plans, which entail the planning, design, and construction of high quality, cost-effective and environmentally sound wastewater treatment and collection systems. Additionally, this Division provides planning and pre-design of trunk sewers and pump stations, analysis of spill data, coordination of sewer main televising, and implementation assistance with the accelerated spill reduction and competitiveness implementation plan.

#### Services and Contracts

The Services and Contracts Division maintains sewage flow monitoring and provides data analysis in order to prepare reasonable and accurate flow reports for the City of San Diego, participating agencies, and municipal commercial customers. The Division also administers the Department's budgets, grant development, contract management, and MWW's Equal Opportunity Contracting Program.

### Capital Improvements Program

MWW's Capital Improvements Program provides design and construction for treatment plants, pump stations, system upgrades, plant expansions, pipelines and other facilities, and conducts special studies designed to maintain the efficiency of the Metropolitan and Municipal Sewerage Systems. Design work is accomplished in-house or is contracted to private engineering firms. This Program provides for the rehabilitation, replacement and expansion of all wastewater collection system components by City forces and contractors.

### Environmental Monitoring and Technical Services (EM&TS)

The EM&TS Division carries out several crucial programs in support of the treatment and disposal of wastewater. These include the Industrial Wastewater Control Program that regulates industrial discharges to the sewers, thereby preventing toxic substances from passing into the ocean, interfering with treatment processes or contaminating the biosolids that result from treatment processes. Additionally, EM&TS operates a

# Metropolitan Wastewater

## Division/Major Program Description

### Environmental Monitoring and Technical Services (EM&TS) (continued)

comprehensive ocean monitoring program to evaluate the effects of discharge into the Pacific Ocean from the City's wastewater treatment plants at Point Loma and South Bay. The Program provides laboratory testing for process control and regulatory reporting purposes, ensures compliance with all regulatory permits, and oversees actions necessary to maintain the permits for the Point Loma Wastewater Treatment Plant and South Bay Water Reclamation Plant. This Division has also obtained ISO 14001 Certification.

### Operations and Maintenance

The Operations and Maintenance Division is responsible for the operation and maintenance of all wastewater treatment facilities including treatment and water reclamation facilities, major pump stations, and biosolids processing. The Division is the first publicly owned wastewater treatment operation in the nation to receive ISO 14001 Certification.

### Storm Water Pollution Prevention

The Storm Water Pollution Prevention Division has been designated as the lead in achieving both the Mayor's Goal #4, Clean up our beaches and bays, and compliance with the updated Storm Water Discharge Permit issued by the State Regional Water Quality Control Board. The Division's main objective is to identify sources of pollution and abate them through enforcement, education, monitoring, and implementation of a Citywide Urban Runoff Management Plan and storm water Best Management Practices.

### Wastewater Collection

The Wastewater Collection Division provides ongoing preventive cleaning, maintenance, and repair of the Municipal Sewerage Collection System, including emergency removal of sewer line stoppages, equipment overhaul and repair, on-site facility inspections, and maintenance of the structural integrity of sewer mains and manholes in the collection system. Additionally, the construction section of this Division performs repairs and replacement of sewer laterals in the public rights-of-way. The Division also administers the Food Establishment Wastewater Discharge Permitting Program, which is responsible for permitting and compliance monitoring of food establishments to minimize the discharge of grease into the wastewater collection system.

# Metropolitan Wastewater

## Service Efforts and Accomplishments

The Metropolitan Wastewater Department (MWW) has made significant strides toward meeting two of the Mayor's Goals. In support of the Mayor's Goal #4, Clean up our beaches and bays, sewer spills were reduced from 316 in Fiscal Year 2001 to 226 in Fiscal Year 2002 and 193 at the end of Fiscal Year 2003. This substantial reduction in sewer spills reflects the significant acceleration in sewer pipeline condition assessment, cleaning, repair, rehabilitation and replacement over the past two years. The rate of replacement and rehabilitation of sewer pipelines has increased from 15 to 45 miles per year, and the entire 3,000 mile system is now under a comprehensive cleaning program. In addition, the Centralized Operations Management Network provides the ability to monitor and control sewage flows in the greater San Diego Metropolitan Sewerage Network from a central control and information center, further promoting greater responsiveness and reliability of the sewerage system.

In support of the Mayor's Goal #9, Pursue energy independence, the Point Loma Wastewater Treatment Plant, the North City Water Reclamation Plant, and the Metro Biosolids Center all utilize cogeneration facilities, converting methane gas into electrical and thermal energy, saving ratepayers millions of dollars while reducing power consumption from the grid. A hydroelectric facility is also in operation at the Point Loma Plant. Additionally, MWW is a participant in San Diego Gas and Electric's Rolling Blackout Reduction Program. In case of a power outage, certain facilities and sewer pump station's electric loads are transferred remotely to their respective emergency generators. The Department also installed a photovoltaic energy system at its central maintenance facility.

The Storm Water Pollution Prevention Division is making a difference in water quality by actively identifying and abating pollution sources. Emphasis has been placed on finding sources of high bacteria, which result in the posting of "contaminated water" signs at the beaches. The current monitoring program is comprehensive, consisting of the following water quality testing components:

- 300 dry weather sites throughout San Diego
- 17 sites at storm drain outlets along the coast and the Peñasquitos lagoon
- 12 sites within Mission Bay
- 24 sites within the Mission Bay Watershed

## Future Outlook

### Strategic Business Plan

The goal of the Metropolitan Wastewater Department's Strategic Business Plan is to ensure that the ratepayers and other key stakeholders receive the most effective wastewater services possible. The plan is a 10-year integrated projection of business goals and objectives covering all aspects of infrastructure planning, financing, operations and maintenance, customer service, and employee team building. Strategies are developed and reviewed each year in the context of supporting the Department's stated vision and mission as well as the goals of the Mayor and City Council.

### Increased Reclaimed Water Capacity - South Bay Water Reclamation Plant Online

The South Bay Water Reclamation Plant (SBWRP) began operation in June 2002. Wastewater is treated to the tertiary level and is then disinfected by irradiation with ultraviolet light. The reclaimed water is available for use as plant process water and may also be marketed for industrial, agricultural, and landscape uses. Construction of the Otay River Pump Station was recently completed. The addition of this pump station allows the SBWRP to run at full capacity, reclaiming up to 15 million gallons of water per day (MGD). The full operation of the 30 MGD North City Water Reclamation Plant (NCWRP) and the 15 MGD SBWRP make the opportunities for maximizing the beneficial use of reclaimed water significant.

# Metropolitan Wastewater

## Future Outlook

### Beneficial Reuse of Biosolids

The Metropolitan Wastewater Department's Operations and Maintenance (O&M) Division has been working with the Environmental Services Department and the City's contractor for biosolids disposal, on a cost-effective method to beneficially use our biosolids. The solids generated by the treatment processes at the Point Loma Wastewater Treatment Plant, the NCWRP and the SBWRP are sent to the Metro Biosolids Center for dewatering, processing, and final disposal. By June 30, 2003, the O&M Division achieved a monthly beneficial use rate of 60%. This percentage of biosolids was used as either alternate daily cover at the Otay Landfill or as direct land application.

### International Cooperation

The ongoing partnership between San Diego and Tijuana, Mexico to enhance the collection and treatment of the region's wastewater and to reduce environmental impacts will continue. As part of this collaborative effort, the increasing regional benefits include the potential sale of reclaimed water and the continuing agreement for the use of the emergency connection. The Environmental Monitoring and Technical Services Division is also providing training and assistance for their Mexican counterparts in controlling industrial inputs to the sewer system. This work is being funded by the State of California.

### Spill Prevention/Management Efforts

Efforts are continuing to prevent and manage sewer spills in remote areas. An Aerial Remote Sensing Pilot Project utilizes San Diego Police helicopters to provide real time thermal imagery and serial videography to detect sewage spills after significant rain events. A Mobile Data Unit (MDU) Field Project has been designed to allow field crews to collect and more accurately manage data from the various canyon inspections. The initial phase of the MDU project has been completed.

The Storm Water Pollution Prevention Division will be addressing other water quality issues within the watersheds in upcoming years. One area to be addressed is Chollas Creek where the State Regional Water Quality Control Board has established a Total Maximum Daily Load for Diazinon.

## Budget Dollars at Work

Nearly 3,000 Miles of municipal sewer system mains in service  
 21.5 Miles of sludge disposal lines in service  
 73,000+ Million gallons per year in total metropolitan sewage flow treated  
 9 Miles of ocean outfall lines in service  
 83 Sewer pump stations in service  
 61 Percent reduction in annual beach closures and postings as of January 2004

Metropolitan Wastewater				
	FY 2003 BUDGET	FY 2004 BUDGET	FY 2005 FINAL	FY 2004-2005 CHANGE
Positions	1,084.08	1,077.08	<b>1,065.71</b>	(11.37)
Personnel Expense	\$ 73,276,163	\$ 80,642,792	\$ <b>87,061,944</b>	\$ 6,419,152
Non-Personnel Expense	\$ 376,552,773	\$ 387,134,142	\$ <b>408,832,825</b>	\$ 21,698,683
<b>TOTAL</b>	<b>\$ 449,828,936</b>	<b>\$ 467,776,934</b>	<b>\$ 495,894,769</b>	<b>\$ 28,117,835</b>

# Metropolitan Wastewater

## Department Staffing

	FY 2003 BUDGET	FY 2004 BUDGET	FY 2005 FINAL
<b>GENERAL FUND</b>			
<b>Storm Water Pollution Prevention</b>			
Administration	6.02	6.02	<b>6.01</b>
Engineering and BMP Development	4.00	3.00	<b>3.00</b>
Investigations and Enforcement	7.00	6.00	<b>6.00</b>
Public Education	3.00	2.00	<b>1.00</b>
Receiving Water Monitoring	3.34	3.34	<b>3.34</b>
Watershed Coordination	2.00	2.00	<b>1.00</b>
<b>Total</b>	<b>25.36</b>	<b>22.36</b>	<b>20.35</b>
<b>MUNICIPAL SEWER FUND</b>			
<b>Wastewater Collection</b>			
Division Administration	2.00	2.00	<b>2.00</b>
Division Support Services	16.00	16.00	<b>17.00</b>
Engineering Services	16.00	16.00	<b>16.00</b>
Food Estb WW Discharge	18.00	18.00	<b>18.00</b>
Main Cleaning & Stoppage Remov	140.00	140.00	<b>130.00</b>
Planning/Scheduling Services	6.00	6.00	<b>9.00</b>
Sewer Lateral Maint & Install	19.05	19.05	<b>19.05</b>
Sewer Main & Manhole Rep/Maint	67.95	67.95	<b>67.95</b>
Sewer Pump Station Ops & Maint	58.00	58.00	<b>56.00</b>
<b>Total</b>	<b>343.00</b>	<b>343.00</b>	<b>335.00</b>
<b>Operations and Maintenance-Muni</b>			
Penasquitos Pump Station	1.50	1.50	<b>2.50</b>
Pump Station 64	8.50	8.50	<b>8.50</b>
Pump Station 65	1.50	1.50	<b>1.50</b>
Pump Station Emg	3.50	3.50	<b>3.50</b>
San Pasqual Water Rec Plant	2.00	0.00	<b>0.00</b>
<b>Total</b>	<b>17.00</b>	<b>15.00</b>	<b>16.00</b>
<b>Environ Mon &amp; Tech Services-Muni</b>			
Industrial Waste Compliance	23.00	23.00	<b>23.00</b>
Industrial Waste Laboratory	29.00	29.00	<b>29.00</b>
<b>Total</b>	<b>52.00</b>	<b>52.00</b>	<b>52.00</b>
<b>CIP/Muni Construction</b>			
CIP/Muni Construction	15.00	14.00	<b>14.00</b>
<b>Total</b>	<b>15.00</b>	<b>14.00</b>	<b>14.00</b>
<b>Administration-Muni</b>			
Agency Contracts	5.83	5.63	<b>4.63</b>
Municipal CIP Fiscal Support	5.70	5.70	<b>5.70</b>
Municipal Clerical Support	18.65	19.35	<b>19.05</b>



# Metropolitan Wastewater

## Department Staffing

	FY 2003 BUDGET	FY 2004 BUDGET	FY 2005 FINAL
<b>MUNICIPAL SEWER FUND</b>			
<b>Administration-Muni</b>			
Municipal Director's Office	1.60	1.60	<b>1.60</b>
Municipal Division Management	0.90	0.90	<b>0.90</b>
Municipal Info & Org Support	1.50	1.50	<b>3.00</b>
Municipal Off Mgmt Support	7.70	8.00	<b>8.00</b>
Municipal Policy Direction	1.20	1.20	<b>1.20</b>
Municipal Procurement Support	2.90	2.30	<b>2.30</b>
Municipal Safety and Training	4.60	4.60	<b>4.90</b>
Municipal Strat Plann & Perf Meas	1.30	1.30	<b>0.40</b>
Municipal Tech Services Group	10.25	10.70	<b>10.70</b>
<b>Total</b>	<b>62.13</b>	<b>62.78</b>	<b>62.38</b>
<b>METROPOLITAN SEWER FUND</b>			
<b>Operations and Maintenance-Metro</b>			
Central Support Facility	80.50	80.50	<b>79.50</b>
COMNET	1.00	1.00	<b>1.00</b>
Financial Services	13.50	13.50	<b>13.50</b>
Grove Avenue Pump Station	0.00	0.50	<b>0.50</b>
Metro Biosolids Center	48.00	48.00	<b>48.00</b>
North City Wtr Reclamation Plt	39.00	39.00	<b>39.00</b>
Operations and Maintenance - Metro	3.00	3.00	<b>3.00</b>
Otay River Pump Station	0.00	0.50	<b>0.50</b>
Point Loma Wstwr Treat Plant	69.00	69.00	<b>69.00</b>
Pump Station 1	11.00	11.00	<b>11.00</b>
Pump Station 2 Administration	17.00	17.00	<b>17.00</b>
South Bay Water Rec. Plant	28.00	28.00	<b>28.00</b>
<b>Total</b>	<b>310.00</b>	<b>311.00</b>	<b>310.00</b>
<b>Metro New Construction-CIP</b>			
MWWD - 41509 Construction	24.00	23.50	<b>23.50</b>
<b>Total</b>	<b>24.00</b>	<b>23.50</b>	<b>23.50</b>
<b>Environ Mon &amp; Tech Services-Metro</b>			
Administration	2.00	2.00	<b>2.00</b>
Biology/ Ocean Operations	42.00	42.00	<b>42.00</b>
Business Support	7.00	7.00	<b>7.00</b>
Permits and Compliance	6.00	6.00	<b>6.00</b>
Wastewater Chemistry	49.00	49.00	<b>49.00</b>
<b>Total</b>	<b>106.00</b>	<b>106.00</b>	<b>106.00</b>
<b>Administration-Metro</b>			
Agency Contracts	7.17	7.37	<b>5.37</b>
Director's Office	3.80	3.80	<b>3.80</b>

# Metropolitan Wastewater

## Department Staffing

	FY 2003 BUDGET	FY 2004 BUDGET	FY 2005 FINAL
<b>METROPOLITAN SEWER FUND</b>			
<b>Administration-Metro</b>			
Division Management	2.10	2.10	2.10
Division Support	39.35	38.65	37.95
Fiscal Review/Rates/Bonds	9.30	9.30	9.30
Info & Organizational Support	4.22	4.22	7.06
Office Management Support	18.30	18.00	18.00
Policy Direction	2.80	2.80	2.80
Procurement Support	7.10	4.70	4.70
Safety and Training	10.70	10.70	11.40
Strategic Planning & Perf Meas	3.00	3.00	1.20
Technology Services Group	21.75	22.80	22.80
<b>Total</b>	<b>129.59</b>	<b>127.44</b>	<b>126.48</b>
Total Operating	1,045.08	1,039.58	1,028.21
Total Capital Improvement Program	39.00	37.50	37.50
<b>TOTAL SEWER FUNDS</b>	<b>1,084.08</b>	<b>1,077.08</b>	<b>1,065.71</b>

## Department Expenditures

	FY 2003 BUDGET	FY 2004 BUDGET	FY 2005 FINAL
<b>GENERAL FUND</b>			
<b>Storm Water Pollution Prevention</b>			
Administration	\$ 616,076	\$ 611,667	\$ 604,142
Engineering and BMP Development	\$ 378,249	\$ 293,921	\$ 277,458
Investigations and Enforcement	\$ 427,202	\$ 387,852	\$ 420,394
Public Education	\$ 672,144	\$ 632,862	\$ 321,362
Receiving Water Monitoring	\$ 647,209	\$ 627,217	\$ 584,000
Watershed Coordination	\$ 221,516	\$ 227,590	\$ 135,837
<b>Total</b>	<b>\$ 2,962,396</b>	<b>\$ 2,781,109</b>	<b>\$ 2,343,193</b>
<b>MUNICIPAL SEWER FUND</b>			
<b>Wastewater Collection</b>			
Corrosion Control Services	\$ 70,001	\$ -	\$ -
Division Administration	\$ 259,162	\$ 933,888	\$ 1,420,191
Division Support Services	\$ 10,442,023	\$ 20,554,161	\$ 21,112,103
Engineering Services	\$ 5,492,905	\$ 3,348,940	\$ 3,588,409
Food Estb WW Discharge	\$ 1,532,251	\$ 1,506,010	\$ 1,740,166
Main Cleaning & Stoppage Remov	\$ 14,212,796	\$ 11,826,404	\$ 12,385,256
Planning/Scheduling Services	\$ 462,125	\$ 501,504	\$ 741,776
Sewer Lateral Maint & Install	\$ 1,983,612	\$ 2,325,271	\$ 2,551,165

# Metropolitan Wastewater

## Department Expenditures

	FY 2003 BUDGET	FY 2004 BUDGET	FY 2005 FINAL
<b>MUNICIPAL SEWER FUND</b>			
<b>Wastewater Collection</b>			
Sewer Main & Manhole Rep/Maint	\$ 8,499,958	\$ 14,759,109	\$ 8,097,041
Sewer Pump Station Ops & Maint	\$ 7,306,009	\$ 7,177,366	\$ 7,733,660
<b>Total</b>	<b>\$ 50,260,842</b>	<b>\$ 62,932,653</b>	<b>\$ 59,369,767</b>
<b>Operations and Maintenance-Muni</b>			
Penasquitos Pump Station	\$ 698,745	\$ 874,910	\$ 868,740
Pump Station 64	\$ 2,947,821	\$ 3,274,454	\$ 3,282,526
Pump Station 65	\$ 803,528	\$ 823,726	\$ 600,793
Pump Station Emg	\$ 646,877	\$ 630,655	\$ 665,121
San Pasqual Water Rec Plant	\$ 1,094,900	\$ 108,304	\$ 88,296
<b>Total</b>	<b>\$ 6,191,871</b>	<b>\$ 5,712,049</b>	<b>\$ 5,505,476</b>
<b>Environ Mon &amp; Tech Services-Muni</b>			
Industrial Waste Compliance	\$ 1,995,134	\$ 2,229,767	\$ 2,130,976
Industrial Waste Laboratory	\$ 2,550,421	\$ 2,685,285	\$ 2,955,848
Non-Activity Related Exp	\$ 740,374	\$ 734,768	\$ 540,844
<b>Total</b>	<b>\$ 5,285,929</b>	<b>\$ 5,649,820</b>	<b>\$ 5,627,668</b>
<b>CIP/Muni Construction</b>			
CIP/Muni Construction	\$ 70,073,390	\$ 93,019,274	\$ 127,441,262
<b>Total</b>	<b>\$ 70,073,390</b>	<b>\$ 93,019,274</b>	<b>\$ 127,441,262</b>
<b>Administration-Muni</b>			
Agency Contracts	\$ 451,538	\$ 1,227,278	\$ 1,190,857
Municipal CIP Fiscal Support	\$ 438,614	\$ 1,098,186	\$ 1,147,039
Municipal Clerical Support	\$ 2,782,370	\$ 3,327,377	\$ 3,346,898
Municipal Director's Office	\$ 165,635	\$ 159,401	\$ 208,452
Municipal Division Management	\$ 72,427	\$ 193,506	\$ 177,306
Municipal Info & Org Support	\$ 230,312	\$ 661,128	\$ 1,294,762
Municipal Off Mgmt Support	\$ 759,854	\$ 876,550	\$ 855,254
Municipal Policy Direction	\$ 126,303	\$ 294,610	\$ 289,490
Municipal Procurement Support	\$ 265,863	\$ 229,159	\$ 245,348
Municipal Safety and Training	\$ 411,829	\$ 439,543	\$ 456,939
Municipal Strat Plann & Perf Meas	\$ 121,680	\$ 136,088	\$ 44,007
Municipal Tech Services Group	\$ 3,025,127	\$ 4,947,690	\$ 3,083,951
Non-Activity Related Items	\$ 56,971,348	\$ 46,617,646	\$ 44,145,411
<b>Total</b>	<b>\$ 65,822,900</b>	<b>\$ 60,208,162</b>	<b>\$ 56,485,714</b>

# Metropolitan Wastewater

## Department Expenditures

	FY 2003 BUDGET	FY 2004 BUDGET	FY 2005 FINAL
<b>METROPOLITAN SEWER FUND</b>			
<b>Operations and Maintenance-Metro</b>			
Central Support Facility	\$ 15,543,272	\$ 19,026,835	\$ 19,731,899
COMNET	\$ 182,465	\$ 127,629	\$ 138,742
Financial Services	\$ 3,468,827	\$ 4,902,776	\$ 4,849,145
Grove Avenue Pump Station	\$ 294,900	\$ 327,697	\$ 342,874
Metro Biosolids Center	\$ 11,733,476	\$ 12,715,220	\$ 12,736,111
North City Wtr Reclamation Plt	\$ 7,132,380	\$ 6,789,331	\$ 7,352,545
Operations and Maintenance - Metro	\$ 4,977,500	\$ 5,176,463	\$ 5,178,439
Otay River Pump Station	\$ -	\$ 578,387	\$ 720,864
Point Loma Wstwr Treat Plant	\$ 11,706,843	\$ 13,230,945	\$ 13,361,539
Pump Station 1	\$ 3,026,222	\$ 2,423,262	\$ 2,366,174
Pump Station 2 Administration	\$ 7,179,024	\$ 6,878,685	\$ 6,273,254
South Bay Water Rec. Plant	\$ 3,960,099	\$ 5,627,538	\$ 5,942,798
<b>Total</b>	<b>\$ 69,205,008</b>	<b>\$ 77,804,768</b>	<b>\$ 78,994,384</b>
<b>Metro New Construction-CIP</b>			
MWWD - 41509 Construction	\$ 56,226,098	\$ 19,093,209	\$ 14,233,403
<b>Total</b>	<b>\$ 56,226,098</b>	<b>\$ 19,093,209</b>	<b>\$ 14,233,403</b>
<b>Metro Construction-CIP</b>			
MWWD - 41508 Construction	\$ 11,026,594	\$ 6,649,615	\$ 11,681,534
<b>Total</b>	<b>\$ 11,026,594</b>	<b>\$ 6,649,615</b>	<b>\$ 11,681,534</b>
<b>Environ Mon &amp; Tech Services-Metro</b>			
Administration	\$ 291,137	\$ 1,097,936	\$ 885,874
Biology/ Ocean Operations	\$ 5,169,659	\$ 4,955,497	\$ 4,811,434
Business Support	\$ 675,934	\$ 571,076	\$ 611,934
Non-Activity Related Expenses	\$ 1,037,005	\$ 1,029,120	\$ 1,712,547
Permits and Compliance	\$ 831,241	\$ 875,994	\$ 705,437
Wastewater Chemistry	\$ 5,447,139	\$ 5,734,288	\$ 5,654,434
<b>Total</b>	<b>\$ 13,452,115</b>	<b>\$ 14,263,911</b>	<b>\$ 14,381,660</b>
<b>Administration-Metro</b>			
Agency Contracts	\$ 825,627	\$ 1,032,599	\$ 914,356
Director's Office	\$ 394,734	\$ 391,679	\$ 497,438
Division Management	\$ 172,907	\$ 389,360	\$ 415,883
Division Support	\$ 5,606,221	\$ 6,694,529	\$ 6,990,530
Fiscal Review/Rates/Bonds	\$ 822,108	\$ 816,866	\$ 886,819
Info & Organizational Support	\$ 648,157	\$ 1,574,522	\$ 2,183,936
Non-Activity Related Items	\$ 79,822,067	\$ 96,941,635	\$ 96,829,431
Office Management Support	\$ 2,087,184	\$ 2,596,793	\$ 2,928,605

# Metropolitan Wastewater

## Department Expenditures

	FY 2003 BUDGET	FY 2004 BUDGET	FY 2005 FINAL
<b>METROPOLITAN SEWER FUND</b>			
<b>Administration-Metro</b>			
Policy Direction	\$ 313,425	\$ 684,474	\$ 682,178
Procurement Support	\$ 752,936	\$ 627,141	\$ 667,662
Safety and Training	\$ 970,181	\$ 1,025,912	\$ 1,096,151
Strategic Planning & Perf Meas	\$ 291,581	\$ 303,420	\$ 149,212
Technology Services Group	\$ 6,614,665	\$ 6,583,434	\$ 5,588,507
<b>Total</b>	<b>\$ 99,321,793</b>	<b>\$ 119,662,364</b>	<b>\$ 119,830,708</b>
Total Operating	\$ 312,502,854	\$ 349,014,836	\$ 342,538,570
Total Capital Improvement Program	\$ 137,326,082	\$ 118,762,098	\$ 153,356,199
<b>TOTAL SEWER FUNDS</b>	<b>\$ 449,828,936</b>	<b>\$ 467,776,934</b>	<b>\$ 495,894,769</b>

## Significant Budget Adjustments

### GENERAL FUND

Storm Water Pollution Prevention	Positions	Cost
<b>Salary and Benefit Adjustments</b> Adjustments to reflect the annualization of the Fiscal Year 2004 negotiated salary compensation schedule, Fiscal Year 2005 negotiated salaries and benefits, changes to average salaries, retirement contributions and other benefit compensation.	0.00	\$ 172,224
<b>Non-Discretionary</b> Adjustments to reflect expenses that are determined outside of the Department's direct control. Examples of these adjustments include utilities, insurance, and rent.	0.00	\$ 1,151
<b>Citywide Personnel Reductions</b> Reduction of 0.01 Executive Secretary and support. This reduction is due to efficiencies achieved within the Department.	(0.01)	\$ (699)
<b>Support for Information Technology</b> Funding has been reallocated according to a Citywide review of information technology budget requirements and priority analyses.	0.00	\$ (17,000)
<b>Additional Program Reduction per the Fiscal Year 2005 Proposed State Impact Solutions Memorandum</b> Reduction in engineering services contracts will reduce the Division's ability to respond to technical inquiries and regulatory demands and consult analysis of sediment and water quality data to identify sources of pollution.	0.00	\$ (73,205)

# Metropolitan Wastewater

## Significant Budget Adjustments

### GENERAL FUND

<b>Storm Water Pollution Prevention</b>	<b>Positions</b>	<b>Cost</b>
<p><b>Reduction in Watershed Coordination and Other Programs</b>            Reduction of 1.00 Associate Planner and support. This reduction will prevent implementation of the six watershed urban runoff management plans as required by the Municipal Storm Water Permit. The City is designated as lead for three of the six plans. Also, outlay purchases throughout the Division have been eliminated.</p>	(1.00) \$	(197,910)
<p><b>Reduction in Public Education Program</b>            Reduction of 1.00 Public Information Officer and support, resulting in a 50 percent reduction in the "Think Blue" Education Program. This reduction will affect the Division's ability to measurably increase the knowledge and change the behavior of target communities as required by the Municipal Storm Water Permit. There will also be a loss of revenue for the reimbursable position and the potential loss of a \$2.2 million grant for Chollas Creek restoration since 38 percent of the identified funds for the required local match are eliminated unless other matching funds are identified.</p>	(1.00) \$	(322,477)

### MUNICIPAL SEWER FUND

<b>Wastewater Collection</b>	<b>Positions</b>	<b>Cost</b>
<p><b>Salary and Benefit Adjustments</b>            Adjustments to reflect the annualization of the Fiscal Year 2004 negotiated salary compensation schedule, Fiscal Year 2005 negotiated salaries and benefits, changes to average salaries, retirement contributions and other benefit compensation.</p>	0.00 \$	1,967,481
<p><b>Support for Information Technology</b>            Funding has been reallocated according to a Citywide review of information technology budget requirements and priority analyses.</p>	0.00 \$	1,221,271
<p><b>Support for Non-Right-of-Way Main Cleaning</b>            Additional support for infrastructure protection and hauling of materials to canyons, revegetation, erosion control, and environmental permitting for the canyons section of the Wastewater Collection Division.</p>	0.00 \$	1,221,000
<p><b>Non-Discretionary</b>            Adjustments to reflect expenses that are determined outside of the Department's direct control. Examples of these adjustments include utilities, insurance, and rent.</p>	0.00 \$	449,079

# Metropolitan Wastewater

## Significant Budget Adjustments

### MUNICIPAL SEWER FUND

Wastewater Collection	Positions	Cost
<p><b>Transfer of Staffing from Administration-Services and Contracts Division</b></p> <p>Transfer #1: Transfer of 2.00 Principle Engineering Aide positions from the Administration-Services and Contracts Division for the annual ISO 14401 Certification Audit (See Transfers #3 and #5).</p>	2.00 \$	160,260
<p><b>Support for Main Repair and Replacement</b></p> <p>Addition of four additional six inch pumps to replace older pumps used in bypassing sewer overflows.</p>	0.00 \$	100,000
<p><b>Support for Manhole Repair and Replacement</b></p> <p>Additional support for the resurfacing of 35 miles of street for Street Division to raise manhole covers.</p>	0.00 \$	57,120
<p><b>Support for Food Establishment Wastewater Discharge (FEWD) Permitting Program</b></p> <p>Additional motive equipment outlay, usage, and assignment support for the FEWD Permitting Program.</p>	0.00 \$	20,380
<p><b>Support for Contractual Services</b></p> <p>Adjustments to reflect changes to existing contractual service requirements.</p>	0.00 \$	2,348
<p><b>Onetime Expenditure Removals</b></p> <p>Reduction in equipment outlay for pump stations, the FEWD Permitting Program, and main cleaning and stoppage removals.</p>	0.00 \$	(717,517)
<p><b>Reduction of Staffing in Main Cleaning/Stoppage Removals</b></p> <p>Reduction of 10.00 limited positions approved as part of the Mayor and City Council approved Accelerated Sewer Main Cleaning Program.</p>	(10.00) \$	(817,023)
<p><b>Reduction in Closed Circuit Television (CCTV)</b></p> <p>Reduction in contractual service support for CCTV.</p>	0.00 \$	(7,227,285)
Operations and Maintenance	Positions	Cost
<p><b>Salary and Benefit Adjustments</b></p> <p>Adjustments to reflect the annualization of the Fiscal Year 2004 negotiated salary compensation schedule, Fiscal Year 2005 negotiated salaries and benefits, changes to average salaries, retirement contributions and other benefit compensation.</p>	0.00 \$	82,846

# Metropolitan Wastewater

## Significant Budget Adjustments

### MUNICIPAL SEWER FUND

Operations and Maintenance	Positions	Cost
<p><b>Transfer of Operations and Maintenance Division Staffing Between Metropolitan and Municipal Sewer Funds.</b></p> <p>Transfer #2: Transfer of 1.00 Plant Technician II to Metropolitan Sewer Fund, Operations and Maintenance (O&amp;M) Division. Transfer of 1.00 Plant Technician I and 1.00 Plant Technician III from Metro Sewer Fund O&amp;M Division for a net transfer amount of one position (See Transfer #4).</p>	1.00 \$	72,376
<p><b>Support for Information Technology</b></p> <p>Funding has been reallocated according to a Citywide review of information technology budget requirements and priority analyses.</p>	0.00 \$	3,119
<p><b>Non-Discretionary</b></p> <p>Adjustments to reflect expenses that are determined outside of the Department's direct control. Examples of these adjustments include utilities, insurance, and rent.</p>	0.00 \$	(1,682)
<p><b>Support for Contractual Services</b></p> <p>Adjustments to reflect changes in existing contractual service requirements.</p>	0.00 \$	(55,232)
<p><b>Reduction in Outlay and Chemicals</b></p> <p>Reduction in support for chemical costs and outlay at Pump Station 65 and Peñasquitos Pump Station.</p>	0.00 \$	(308,000)
Environ Mon & Tech Services	Positions	Cost
<p><b>Salary and Benefit Adjustments</b></p> <p>Adjustments to reflect the annualization of the Fiscal Year 2004 negotiated salary compensation schedule, Fiscal Year 2005 negotiated salaries and benefits, changes to average salaries, retirement contributions and other benefit compensation.</p>	0.00 \$	357,214
<p><b>Non-Discretionary</b></p> <p>Adjustments to reflect expenses that are determined outside of the Department's direct control. Examples of these adjustments include utilities, insurance, and rent.</p>	0.00 \$	(925)
<p><b>Support for Information Technology</b></p> <p>Funding has been reallocated according to a Citywide review of information technology budget requirements and priority analyses.</p>	0.00 \$	(28,621)
<p><b>Reduction in Equipment Outlay</b></p> <p>Reduction in laboratory equipment for the Wastewater Chemistry Program.</p>	0.00 \$	(150,000)



# Metropolitan Wastewater

## Significant Budget Adjustments

### MUNICIPAL SEWER FUND

<b>Environ Mon &amp; Tech Services</b>	<b>Positions</b>	<b>Cost</b>
<b>Reduction in Contractual Services</b> Reduction in miscellaneous contractual service requirements.	0.00 \$	(199,820)
<b>CIP/Muni Construction</b>	<b>Positions</b>	<b>Cost</b>
<b>Salary and Benefit Adjustments</b> Adjustments to reflect the annualization of the Fiscal Year 2004 negotiated salary compensation schedule, Fiscal Year 2005 negotiated salaries and benefits, changes to average salaries, retirement contributions and other benefit compensation.	0.00 \$	116,830
<b>Support for Capital Improvements Program (CIP)</b> Provides for Department wide adjustments to support Capital Improvements Program.	0.00 \$	49,309,080
<b>Reduction in support for the Capital Improvements Program (CIP)</b> Reduction in support for the Capital Improvements Program.	0.00 \$	(15,003,922)
<b>Administration</b>	<b>Positions</b>	<b>Cost</b>
<b>Salary and Benefit Adjustments</b> Adjustments to reflect the annualization of the Fiscal Year 2004 negotiated salary compensation schedule, Fiscal Year 2005 negotiated salaries and benefits, changes to average salaries, retirement contributions and other benefit compensation.	0.00 \$	537,005
<b>Non-Discretionary</b> Adjustments to reflect expenses that are determined outside of the Department's direct control. Examples of these adjustments include utilities, insurance, and rent.	0.00 \$	142,273
<b>Staffing and Support for Informations Systems Technicians</b> Addition of 0.60 of Information Systems Technician and support to maintain current levels of service previously provided by external resources.	0.60 \$	42,043
<b>Support for Utilities General Manager</b> Increase in support for the Utilities General Manager and Executive Secretary.	0.00 \$	38,730
<b>45-Day Operating Reserve</b> Addition of support for the Department's contingency needs.	0.00 \$	26,770

# Metropolitan Wastewater

## Significant Budget Adjustments

### MUNICIPAL SEWER FUND

Administration	Positions	Cost
<b>Staffing and Support for Administration</b> Addition of 0.30 Administrative Aide II and support for the Citywide 1472 automation process and maintenance and tracking of Municipal Capital Improvements Program job order records.	0.30 \$	20,526
<b>Support for Environmental Monitoring and Technical Services Laboratory</b> Exchange of 1.00 Clerical Assistant II for 1.00 Building Service Technician to provide support to the Environmental Monitoring and Technical Services Laboratory.	0.00 \$	1,008
<b>Onetime Expenditure Removals</b> Reduction of prior year equipment outlay support.	0.00 \$	(9,948)
<b>Reduction in Supplies and Services</b> Reduction in miscellaneous Supplies and Services appropriations in accordance with the Department's 10 Year Financing Plan/Rate Case.	0.00 \$	(10,113)
<b>Reduction in Clerical Support</b> Reduction of 0.30 Clerical Assistant II within the Services and Contracts Division.	(0.30) \$	(15,357)
<b>Reduction in Existing Contractual Services</b> Reduction in existing contractual service support.	0.00 \$	(35,686)
<b>Reduction in Travel and Training</b> Reduction in support for travel and training in accordance with the Department's 10-Year Financing Plan/Rate Case.	0.00 \$	(40,457)
<b>Reduction in Contractual Services</b> Reduction in Miscellaneous Contractual Service appropriations in accordance with the Department's 10-Year Financing Plan/Rate Case.	0.00 \$	(52,800)
<b>Reduction in Magic to SAP Interface</b> Reduction in San Diego Data Processing Corporation project support for Magic to SAP interface in accordance with the Department's 10-Year Financing Plan/Rate Case.	0.00 \$	(57,781)
<b>Reduction in San Diego Data Processing Corporation (SDDPC) Support</b> Reduction in onsite SDDPC support.	0.00 \$	(74,563)
<b>Transfer of Staffing to Wastewater Collection</b> Transfer #3: Transfer of 1.00 Principal Engineering Aide position from the Administration-Services and Contracts Division to Wastewater Collection Division for the annual ISO 14401 Certification Audit (See Transfer #1).	(1.00) \$	(80,130)

# Metropolitan Wastewater

## Significant Budget Adjustments

### MUNICIPAL SEWER FUND

Administration	Positions	Cost
<p><b>Reduction in Supplies and Services in Capital Improvements Program Support</b></p> <p>Reduction in miscellaneous Supplies and Services appropriations in accordance with the Department's 10-Year Financing Plan/Rate Case.</p>	0.00 \$	(155,867)
<p><b>Reduction in Support for Hale Avenue</b></p> <p>Reduction in support to the City of Escondido for the Hale Avenue Resource Recovery Facility.</p>	0.00 \$	(500,000)
<p><b>Support for Information Technology</b></p> <p>Funding has been reallocated according to a Citywide review of information technology budget requirements and priority analyses.</p>	0.00 \$	(1,498,101)
<p><b>Reduction in Support for General Ledger</b></p> <p>Reduction in departmental contribution to the upgrade of the Citywide General Ledger.</p>	0.00 \$	(2,000,000)

### METROPOLITAN SEWER FUND

Operations and Maintenance	Positions	Cost
<p><b>Salary and Benefit Adjustments</b></p> <p>Adjustments to reflect the annualization of the Fiscal Year 2004 negotiated salary compensation schedule, Fiscal Year 2005 negotiated salaries and benefits, changes to average salaries, retirement contributions and other benefit compensation.</p>	0.00 \$	1,972,131
<p><b>Non-Discretionary</b></p> <p>Adjustments to reflect expenses that are determined outside of the Department's direct control. Examples of these adjustments include utilities, insurance, and rent.</p>	0.00 \$	1,762,209
<p><b>Annualization of Support for New Facilities which were Partially Added in Fiscal Year 2004</b></p> <p>Increase in support for the annualization for the first full year of the Otay River Pump Station, which includes miscellaneous contractual services, chemicals, machine parts, and various other non-personnel expenses.</p>	0.00 \$	367,152
<p><b>Support for Bioxide Chemical</b></p> <p>Increase in support for wastewater treatment and odor control chemicals at the North City Water Reclamation Plant, including those added upstream at the Peñasquitos Pump Station.</p>	0.00 \$	335,500
<p><b>Support for Contractual Services</b></p> <p>Adjustments to reflect changes in existing contractual service requirements.</p>	0.00 \$	35,410

# Metropolitan Wastewater

## Significant Budget Adjustments

### METROPOLITAN SEWER FUND

<b>Operations and Maintenance</b>	<b>Positions</b>	<b>Cost</b>
<p><b>Support for Membership Fee for California Association of Sanitation Agencies (CASA)</b>                      Increase in support for cost associated with membership fees for CASA.</p>	0.00 \$	14,000
<p><b>Transfer of Operations and Maintenance Division Staffing Between Metropolitan and Municipal Sewer Funds.</b>                      Transfer #4: Transfer of 1.00 Plant Technician II from Municipal Sewer Fund, Operations and Maintenance (O&amp;M) Division. Transfer of 1.00 Plant Technician I and 1.00 Plant Technician III to Municipal Sewer Fund O&amp;M Division for a net transfer amount of one position (See Transfer #2).</p>	(1.00) \$	(72,375)
<p><b>Reduction in Equipment Maintenance Plan Fund</b>                      Reduction in support to the Equipment Maintenance Plan for Fiscal Year 2005.</p>	0.00 \$	(500,000)
<p><b>Support for Information Technology</b>                      Funding has been reallocated according to a Citywide review of information technology budget requirements and priority analyses.</p>	0.00 \$	(1,298,511)
<p><b>Reduction in Machine Parts</b>                      Reduction of support for other machine parts in accordance with the Department's 10-Year Financing Plan/Rate Case.</p>	0.00 \$	(1,425,900)
<b>Metro New Construction-CIP</b>	<b>Positions</b>	<b>Cost</b>
<p><b>Salary and Benefit Adjustments</b>                      Adjustments to reflect the annualization of the Fiscal Year 2004 negotiated salary compensation schedule, Fiscal Year 2005 negotiated salaries and benefits, changes to average salaries, retirement contributions and other benefit compensation.</p>	0.00 \$	199,499
<p><b>Support for Capital Improvements Program</b>                      Provides for Department-wide adjustments to support Capital Improvements Program.</p>	0.00 \$	(5,059,305)
<b>Metro Construction-CIP</b>	<b>Positions</b>	<b>Cost</b>
<p><b>Support for Capital Improvements Program</b>                      Provides for Department-wide adjustments to support Capital Improvements Program.</p>	0.00 \$	5,031,919

# Metropolitan Wastewater

## Significant Budget Adjustments

### METROPOLITAN SEWER FUND

Environ Mon & Tech Services-Metro	Positions	Cost
<p><b>Salary and Benefit Adjustments</b> Adjustments to reflect the annualization of the Fiscal Year 2004 negotiated salary compensation schedule, Fiscal Year 2005 negotiated salaries and benefits, changes to average salaries, retirement contributions and other benefit compensation.</p>	0.00 \$	860,493
<p><b>Support for Ocean Images</b> Additional ocean imaging support for water quality management.</p>	0.00 \$	175,000
<p><b>Support for Electrical Services</b> Additional support for anticipated electrical service needs at the new Naval Training Center laboratories.</p>	0.00 \$	172,000
<p><b>Support for Gas Services</b> Additional support for anticipated gas service needs at the new Naval Training Center laboratories.</p>	0.00 \$	125,000
<p><b>Support for Landscaping, Trash, and Other Services</b> Additional support for landscape maintenance, trash, and other obligations at the new Naval Training Center laboratories.</p>	0.00 \$	100,000
<p><b>Support for Ongoing Equipment Services</b> Additional support for ongoing laboratory equipment service contracts at the new Naval Training Center laboratories.</p>	0.00 \$	45,000
<p><b>Support for Outfall Inspection Program</b> Additional consultant services support for the Department's annual outfall inspection.</p>	0.00 \$	30,000
<p><b>Support for Marine Diesel Fuel</b> Additional support for anticipated marine fuel usage.</p>	0.00 \$	25,000
<p><b>Support for Certification Pay</b> Increase in certification pay for Engineer and Vector Management staff.</p>	0.00 \$	25,000
<p><b>Non-Discretionary</b> Adjustments to reflect expenses that are determined outside of the Department's direct control. Examples of these adjustments include utilities, insurance, and rent.</p>	0.00 \$	(108,419)
<p><b>Reduction in Engineering and Permits</b> Reduction in permits and engineering services in accordance with the Department's 10-Year Financing Plan/Rate Case.</p>	0.00 \$	(200,000)
<p><b>Support for Information Technology</b> Funding has been reallocated according to a Citywide review of information technology budget requirements and priority analyses.</p>	0.00 \$	(234,751)

# Metropolitan Wastewater

## Significant Budget Adjustments

### METROPOLITAN SEWER FUND

<b>Environ Mon &amp; Tech Services-Metro</b>	<b>Positions</b>	<b>Cost</b>
<p><b>Onetime Expenditure Removals</b> Reduction in laboratory equipment and repair parts for the "Monitor III" vessel.</p>	0.00 \$	(390,000)
<p><b>Reduction in Lab Supplies and Equipment</b> Reduction in overtime and laboratory equipment for Wastewater Chemistry Program.</p>	0.00 \$	(506,574)
<b>Administration-Metro</b>	<b>Positions</b>	<b>Cost</b>
<p><b>Salary and Benefit Adjustments</b> Adjustments to reflect the annualization of the Fiscal Year 2004 negotiated salary compensation schedule, Fiscal Year 2005 negotiated salaries and benefits, changes to average salaries, retirement contributions and other benefit compensation.</p>	0.00 \$	1,143,327
<p><b>Non-Discretionary</b> Adjustments to reflect expenses that are determined outside of the Department's direct control. Examples of these adjustments include utilities, insurance, and rent.</p>	0.00 \$	914,624
<p><b>Staffing and Support for Informations Systems Technicians</b> Addition of 1.40 of Information Systems Technicians and support to maintain current levels of service previously provided by external resources.</p>	1.40 \$	98,105
<p><b>Support for the Utilities General Manager</b> Increase in support for the Utilities General Manager and Executive Secretary.</p>	0.00 \$	80,784
<p><b>Addition in Contractual Services</b> Increase support in Miscellaneous Contractual Service appropriations in accordance with the Department's 10-Year Financing Plan/Rate Case.</p>	0.00 \$	65,240
<p><b>45-Day Operating Reserve</b> Addition of support for the Department's contingency needs.</p>	0.00 \$	51,693
<p><b>Staffing and Support for Administration</b> Addition of 0.70 Administrative Aide II and support for the Citywide 1472 automation process and maintenance and tracking of Municipal Capital Improvements Program job order records.</p>	0.70 \$	47,894

# Metropolitan Wastewater

## Significant Budget Adjustments

### METROPOLITAN SEWER FUND

Administration-Metro	Positions	Cost
<b>Support for Environmental Monitoring and Technical Services Laboratory</b>	0.00	\$ 2,353
Exchange of 1.00 Clerical Assistant II for 1.00 Building Services Technician to provide support to the Environmental Monitoring and Technical Services Lab.		
<b>Support for Information Technology</b>	0.00	\$ 209
Funding has been reallocated according to a Citywide review of information technology budget requirements and priority analyses.		
<b>Reduction in Supplies and Services</b>	0.00	\$ (21,697)
Reduction in miscellaneous supplies and services appropriations in accordance with the Department's 10 Year Financing Plan/Rate Case.		
<b>Onetime Expenditure Removals</b>	0.00	\$ (23,212)
Reduction of prior year equipment outlay support.		
<b>Reduction in Clerical Support</b>	(0.70)	\$ (35,833)
Reduction of 0.70 Clerical Assistant II within the Services and Contracts Division.		
<b>Transfer of Staffing to Wastewater Collection</b>	(1.00)	\$ (80,130)
Transfer #5: Transfer of 1.00 Principal Engineering Aide position from the Administration-Services and Contracts Division to Wastewater Collection Division for the annual ISO 14401 Certification Audit (See Transfer #1).		
<b>Reduction in Travel and Training</b>	0.00	\$ (114,858)
Reduction in support for travel and training in accordance with the Department's 10-Year Financing Plan/Rate Case.		
<b>Citywide Personnel Reductions</b>	(1.36)	\$ (121,647)
Reduction of 0.36 of an Executive Secretary and 1.00 Senior Management Analyst and support. This reduction is due to efficiencies achieved within the Department.		
<b>Reduction in Magic to SAP Interface</b>	0.00	\$ (134,821)
Reduction in SDDPC project support for Magic to SAP interface in accordance with the Department's 10-Year Financing Plan/Rate Case.		
<b>Reduction in Existing Contractual Services</b>	0.00	\$ (166,017)
Reduction in existing contractual service support.		
<b>Reduction in San Diego Data Processing Corporation (SDDPC) Support</b>	0.00	\$ (173,981)
Reduction in onsite SDDPC support.		

# Metropolitan Wastewater

## Significant Budget Adjustments

### METROPOLITAN SEWER FUND

Administration-Metro	Positions	Cost
<b>Reduction in Supplies and Services in Capital Improvements Program Support</b> Reduction in miscellaneous supplies and services appropriations in accordance with the Department's 10-Year Financing Plan/Rate Case.	0.00	\$ (363,689)
<b>Unallocated Reserve Reduction</b> Reduction in the Department's unallocated reserve.	0.00	\$ (1,000,000)

## Expenditures by Category

	FY 2003 BUDGET	FY 2004 BUDGET	FY 2005 FINAL
<b>PERSONNEL</b>			
Salaries & Wages	\$ 55,688,521	\$ 57,285,636	\$ 59,726,389
Fringe Benefits	\$ 17,587,642	\$ 23,357,156	\$ 27,335,555
<b>SUBTOTAL PERSONNEL</b>	\$ 73,276,163	\$ 80,642,792	\$ 87,061,944
<b>NON-PERSONNEL</b>			
Supplies & Services	\$ 336,664,503	\$ 347,272,767	\$ 372,006,968
Information Technology	\$ 18,660,509	\$ 18,312,653	\$ 16,226,949
Energy/Utilities	\$ 17,360,493	\$ 18,359,603	\$ 18,596,466
Equipment Outlay	\$ 3,867,268	\$ 3,189,119	\$ 2,002,442
<b>SUBTOTAL NON-PERSONNEL</b>	\$ 376,552,773	\$ 387,134,142	\$ 408,832,825
<b>TOTAL</b>	\$ 449,828,936	\$ 467,776,934	\$ 495,894,769

## Revenues by Category

	FY 2003 BUDGET	FY 2004 BUDGET	FY 2005 FINAL
<b>GENERAL FUND</b>			
Charges for Current Services	\$ 820,096	\$ 497,378	\$ 428,782
<b>TOTAL</b>	\$ 820,096	\$ 497,378	\$ 428,782



# Metropolitan Wastewater

## Key Performance Measures

	FY 2003 BUDGET	FY 2004 BUDGET	FY 2005 FINAL
Unit cost for combined Point Loma Wastewater Treatment Plant activities per million gallons of sewage treated	\$189	\$206	<b>\$214</b>
Unit cost for combined Metropolitan Biosolids Center activities per dry ton of biosolids processed and beneficially reused <sup>(1)</sup>	\$321	\$318	<b>\$335</b>
Miles of sewer mains replaced/rehabilitated/spot repaired	41.00	52	<b>45.00</b>
Number of sanitary sewer spills per 100 mile of pipe	9.10	8.00	<b>7.50</b>
Number of ocean samples taken and analyzed <sup>(2)</sup>	16,240	10,353	<b>7,754</b>
Number of sanitary sewer spills to reach public water <sup>(3)</sup>	27.00	25.00	<b>23.00</b>
Departmental Incidence Rate <sup>(4)</sup>	9.00	9.00	<b>8.50</b>
Reduction in beach postings and closures achieved by Storm Water Pollution Prevention per Mayor's Goal #4, Clean up our beaches and bays <sup>(2)</sup>	45.00%	61.00%	<b>50.00%</b>
Number of sites investigated for illegal storm water discharge by Storm Water Pollution Prevention	1,350	1,400	<b>1,500</b>
Average cost per site investigated for illegal storm water discharge by Storm Water Pollution Prevention	\$316	\$277	<b>\$280</b>
Number of sites sampled for water quality by Storm Water Pollution Prevention	700	700	<b>700</b>
Average cost per site sampled for water quality by Storm Water Pollution Prevention	\$925	\$896	<b>\$867</b>

## Salary Schedule

### GENERAL FUND

#### Storm Water Pollution Prevention

<i>Class</i>	<i>Position Title</i>	<i>FY 2004 Positions</i>	<i>FY 2005 Positions</i>	<i>Salary</i>	<i>Total</i>
1106	Sr Management Analyst	1.00	<b>1.00</b>	\$ 66,198	\$ 66,198
1221	Assoc Engineer-Civil	1.00	<b>1.00</b>	\$ 73,769	\$ 73,769
1227	Assoc Planner	1.00	<b>0.00</b>	\$ -	\$ -
1356	Code Compliance Officer	5.00	<b>5.00</b>	\$ 41,115	\$ 205,577
1357	Code Compliance Supv	1.00	<b>1.00</b>	\$ 47,297	\$ 47,297
1422	Drafting Aide	1.00	<b>1.00</b>	\$ 42,627	\$ 42,627
1535	Clerical Assistant II	1.00	<b>1.00</b>	\$ 32,749	\$ 32,749
1580	Laboratory Technician	1.34	<b>1.34</b>	\$ 44,955	\$ 60,240
1622	Biologist III	2.00	<b>2.00</b>	\$ 69,239	\$ 138,478

(1) Output measure varies due to changes in non-discretionary accounts and increases in chemical costs.

(2) Fewer samples "taken and analyzed" does not reflect a reduction in sampling effort. The counting method was modified in Fiscal Year 2004 in accordance with requirements specified in the City's NPDES permits for wastewater discharges.

(3) Based on CY 2001 goal to reduce spills to public water by 25% in CY 2004. The goal was calculated off the base year number of 34 spills and represents a maximum number.

(4) Based on the number of recordable injuries in a given period of time multiplied by 200,000/the number of hours worked in that period. The latest National Incidence Rate figure for the Sanitary Services Industry is 7.3.

# Metropolitan Wastewater

## Salary Schedule

### GENERAL FUND

#### Storm Water Pollution Prevention

<i>Class</i>	<i>Position Title</i>	<i>FY 2004 Positions</i>	<i>FY 2005 Positions</i>	<i>Salary</i>	<i>Total</i>
1624	Biologist II	1.00	<b>1.00</b>	\$ 59,844	\$ 59,844
1746	Word Processing Operator	1.00	<b>1.00</b>	\$ 34,857	\$ 34,857
1776	Public Information Clerk	1.00	<b>1.00</b>	\$ 34,873	\$ 34,873
1777	Public Info Officer	1.00	<b>0.00</b>	\$ -	\$ -
1876	Executive Secretary	0.01	<b>0.00</b>	\$ -	\$ -
1879	Sr Clerk/Typist	2.00	<b>2.00</b>	\$ 39,789	\$ 79,577
1940	Supv Public Info Officer	1.00	<b>1.00</b>	\$ 66,096	\$ 66,096
2153	Deputy City Manager	0.01	<b>0.01</b>	\$ 179,000	\$ 1,790
2214	Deputy Director	1.00	<b>1.00</b>	\$ 115,087	\$ 115,087
	Overtime Budgeted	0.00	<b>0.00</b>	\$ -	\$ 3,012
	Reg Pay For Engineers	0.00	<b>0.00</b>	\$ -	\$ 9,802
	Temporary Help	0.00	<b>0.00</b>	\$ -	\$ 42,420
	<b>Total</b>	<b>22.36</b>	<b>20.35</b>		<b>\$ 1,114,293</b>

### MUNICIPAL SEWER FUND

#### Wastewater Collection

<i>Class</i>	<i>Position Title</i>	<i>FY 2004 Positions</i>	<i>FY 2005 Positions</i>	<i>Salary</i>	<i>Total</i>
1104	Account Clerk	1.00	<b>1.00</b>	\$ 34,768	\$ 34,768
1105	Administrative Aide I	1.00	<b>1.00</b>	\$ 40,043	\$ 40,043
1106	Sr Management Analyst	1.00	<b>1.00</b>	\$ 66,198	\$ 66,198
1107	Administrative Aide II	3.00	<b>3.00</b>	\$ 46,229	\$ 138,686
1153	Asst Engineer-Civil	6.00	<b>5.00</b>	\$ 63,507	\$ 317,533
1218	Assoc Management Analyst	2.00	<b>2.00</b>	\$ 58,745	\$ 117,490
1221	Assoc Engineer-Civil	4.00	<b>3.00</b>	\$ 73,768	\$ 221,305
1227	Assoc Planner	1.00	<b>0.00</b>	\$ -	\$ -
1293	Cement Finisher	1.00	<b>1.00</b>	\$ 49,714	\$ 49,714
1376	Wastewater Pretreatment Inspector III	1.00	<b>1.00</b>	\$ 66,317	\$ 66,317
1423	Sr Drafting Aide	1.00	<b>1.00</b>	\$ 48,668	\$ 48,668
1436	Equipment Technician I	19.00	<b>23.00</b>	\$ 39,450	\$ 907,347
1438	Equipment Technician II	11.00	<b>11.00</b>	\$ 43,406	\$ 477,470
1439	Equipment Operator I	42.00	<b>41.00</b>	\$ 41,269	\$ 1,692,018
1440	Equipment Operator II	10.00	<b>10.00</b>	\$ 45,571	\$ 455,711
1441	Equipment Technician III	1.00	<b>1.00</b>	\$ 47,867	\$ 47,867
1445	Equipment Operator III	2.00	<b>2.00</b>	\$ 47,572	\$ 95,143

# Metropolitan Wastewater

## Salary Schedule

### MUNICIPAL SEWER FUND

#### Wastewater Collection

<i>Class</i>	<i>Position Title</i>	<i>FY 2004 Positions</i>	<i>FY 2005 Positions</i>	<i>Salary</i>		<i>Total</i>
1467	Grounds Maintenance Worker I	1.00	<b>0.00</b>	\$	-	\$ -
1488	General Water Utility Supv	5.00	<b>5.00</b>	\$	65,169	\$ 325,846
1513	Heavy Truck Driver I	2.00	<b>2.00</b>	\$	39,853	\$ 79,706
1535	Clerical Assistant II	2.00	<b>2.00</b>	\$	32,748	\$ 65,496
1579	Laborer	2.00	<b>2.00</b>	\$	30,442	\$ 60,884
1624	Biologist II	1.00	<b>0.00</b>	\$	-	\$ -
1648	Payroll Specialist II	2.00	<b>2.00</b>	\$	38,255	\$ 76,509
1666	Plant Process Control Electrician	8.00	<b>8.00</b>	\$	56,074	\$ 448,593
1668	Plant Process Control Supv	6.00	<b>7.00</b>	\$	62,063	\$ 434,438
1727	Principal Engineering Aide	6.00	<b>7.00</b>	\$	55,189	\$ 386,323
1734	Principal Water Utility Supv	1.00	<b>1.00</b>	\$	58,055	\$ 58,055
1746	Word Processing Operator	1.00	<b>3.00</b>	\$	34,857	\$ 104,572
1777	Public Info Officer	1.00	<b>0.00</b>	\$	-	\$ -
1855	Sr Civil Engineer	1.00	<b>1.00</b>	\$	85,566	\$ 85,566
1861	Sr Engineering Aide	23.00	<b>24.00</b>	\$	48,775	\$ 1,170,600
1870	Senior Water Utility Supv	13.00	<b>13.00</b>	\$	52,700	\$ 685,094
1872	Sr Planner	1.00	<b>0.00</b>	\$	-	\$ -
1879	Sr Clerk/Typist	1.00	<b>1.00</b>	\$	39,789	\$ 39,789
1917	Supv Management Analyst	1.00	<b>0.00</b>	\$	-	\$ -
1978	Utility Worker I	94.00	<b>90.00</b>	\$	33,170	\$ 2,985,313
1991	Water Utility Supv	24.00	<b>20.00</b>	\$	47,754	\$ 955,079
1992	Water Utility Worker	38.00	<b>38.00</b>	\$	36,486	\$ 1,386,450
2214	Deputy Director	1.00	<b>1.00</b>	\$	115,086	\$ 115,086
2250	Asst Deputy Director	1.00	<b>1.00</b>	\$	103,917	\$ 103,917
	Bilingual - Regular	0.00	<b>0.00</b>	\$	-	\$ 23,406
	Overtime Budgeted	0.00	<b>0.00</b>	\$	-	\$ 810,533
	Reg Pay For Engineers	0.00	<b>0.00</b>	\$	-	\$ 21,138
	Standby Pay	0.00	<b>0.00</b>	\$	-	\$ 6,241
	Tech Cert Pay	0.00	<b>0.00</b>	\$	-	\$ 80,233
	Temporary Help	0.00	<b>0.00</b>	\$	-	\$ 69,442
	<b>Total</b>	343.00	<b>335.00</b>			<b>\$ 15,354,587</b>

#### Operations and Maintenance

<i>Class</i>	<i>Position Title</i>	<i>FY 2004 Positions</i>	<i>FY 2005 Positions</i>	<i>Salary</i>		<i>Total</i>
1372	Pump Station Operator	5.00	<b>5.00</b>	\$	47,820	\$ 239,102
1373	Pump Station Operations Supv	1.00	<b>1.00</b>	\$	50,968	\$ 50,968

# Metropolitan Wastewater

## Salary Schedule

### MUNICIPAL SEWER FUND

#### Operations and Maintenance

<i>Class</i>	<i>Position Title</i>	<i>FY 2004 Positions</i>	<i>FY 2005 Positions</i>		<i>Salary</i>	<i>Total</i>
1523	Instrumentation & Control Tech	2.00	<b>2.00</b>	\$	56,061	\$ 112,122
1652	Plant Technician I	1.00	<b>2.00</b>	\$	41,487	\$ 82,974
1653	Plant Technician II	3.00	<b>2.00</b>	\$	45,597	\$ 91,194
1654	Plant Technician III	0.00	<b>1.00</b>	\$	50,010	\$ 50,010
1666	Plant Process Control Electrician	2.00	<b>2.00</b>	\$	56,074	\$ 112,147
1669	Plant Technician Supv	1.00	<b>1.00</b>	\$	57,176	\$ 57,176
	Overtime Budgeted	0.00	<b>0.00</b>	\$	-	\$ 50,633
	<b>Total</b>	<b>15.00</b>	<b>16.00</b>			<b>\$ 846,326</b>

#### Environ Mon & Tech Services

<i>Class</i>	<i>Position Title</i>	<i>FY 2004 Positions</i>	<i>FY 2005 Positions</i>		<i>Salary</i>	<i>Total</i>
1136	Asst Chemist	11.00	<b>11.00</b>	\$	59,913	\$ 659,044
1160	Asst Laboratory Technician	2.00	<b>2.00</b>	\$	37,405	\$ 74,809
1220	Assoc Chemist	5.00	<b>5.00</b>	\$	69,165	\$ 345,824
1375	Wastewater Pretreatment Inspector II	5.00	<b>5.00</b>	\$	60,108	\$ 300,540
1376	Wastewater Pretreatment Inspector III	4.00	<b>4.00</b>	\$	66,318	\$ 265,271
1378	Supv Wastewater Pretreatment Inspector	2.00	<b>2.00</b>	\$	72,990	\$ 145,980
1465	Field Representative	2.00	<b>2.00</b>	\$	35,843	\$ 71,686
1527	HazMat Inspector II	5.00	<b>5.00</b>	\$	61,500	\$ 307,500
1528	Wastewater Pretreatment Program Manager	1.00	<b>1.00</b>	\$	81,578	\$ 81,578
1535	Clerical Assistant II	1.00	<b>1.00</b>	\$	32,749	\$ 32,749
1580	Laboratory Technician	9.00	<b>9.00</b>	\$	44,956	\$ 404,601
1746	Word Processing Operator	2.00	<b>2.00</b>	\$	34,857	\$ 69,714
1854	Sr Chemist	1.00	<b>1.00</b>	\$	79,688	\$ 79,688
1879	Sr Clerk/Typist	1.00	<b>1.00</b>	\$	39,789	\$ 39,789
1896	Supv HazMat Inspector	1.00	<b>1.00</b>	\$	74,710	\$ 74,710
	Overtime Budgeted	0.00	<b>0.00</b>	\$	-	\$ 60,329
	<b>Total</b>	<b>52.00</b>	<b>52.00</b>			<b>\$ 3,013,812</b>

#### CIP/Muni Construction

<i>Class</i>	<i>Position Title</i>	<i>FY 2004 Positions</i>	<i>FY 2005 Positions</i>		<i>Salary</i>	<i>Total</i>
1153	Asst Engineer-Civil	5.00	<b>5.00</b>	\$	63,507	\$ 317,533
1221	Assoc Engineer-Civil	5.00	<b>5.00</b>	\$	73,768	\$ 368,842
1227	Assoc Planner	1.00	<b>1.00</b>	\$	61,286	\$ 61,286
1535	Clerical Assistant II	1.00	<b>0.00</b>	\$	-	-
1727	Principal Engineering Aide	1.00	<b>1.00</b>	\$	55,189	\$ 55,189

# Metropolitan Wastewater

## Salary Schedule

### MUNICIPAL SEWER FUND

#### CIP/Muni Construction

<i>Class</i>	<i>Position Title</i>	<i>FY 2004 Positions</i>	<i>FY 2005 Positions</i>		<i>Salary</i>		<i>Total</i>
1746	Word Processing Operator	0.00	<b>1.00</b>	\$	35,180	\$	35,180
1855	Sr Civil Engineer	1.00	<b>1.00</b>	\$	85,566	\$	85,566
	<b>Total</b>	14.00	<b>14.00</b>			<b>\$</b>	<b>923,596</b>

#### Administration

<i>Class</i>	<i>Position Title</i>	<i>FY 2004 Positions</i>	<i>FY 2005 Positions</i>		<i>Salary</i>		<i>Total</i>
1104	Account Clerk	1.00	<b>1.00</b>	\$	34,768	\$	34,768
1105	Administrative Aide I	0.00	<b>0.30</b>	\$	40,040	\$	12,012
1106	Sr Management Analyst	4.70	<b>4.70</b>	\$	66,198	\$	311,131
1107	Administrative Aide II	2.60	<b>2.00</b>	\$	46,230	\$	92,460
1153	Asst Engineer-Civil	6.10	<b>6.10</b>	\$	63,506	\$	387,389
1157	Asst Engineer-Electrical	0.80	<b>0.80</b>	\$	64,233	\$	51,386
1167	Asst Engineer-Mechanical	0.30	<b>0.30</b>	\$	64,233	\$	19,270
1218	Assoc Management Analyst	5.25	<b>5.25</b>	\$	58,746	\$	308,415
1221	Assoc Engineer-Civil	6.30	<b>5.40</b>	\$	73,769	\$	398,351
1223	Assoc Engineer-Electrical	0.80	<b>0.80</b>	\$	73,089	\$	58,471
1225	Assoc Engineer-Mechanical	0.30	<b>0.60</b>	\$	74,127	\$	44,476
1227	Assoc Planner	0.30	<b>0.30</b>	\$	61,287	\$	18,386
1243	Info Systems Administrator	0.30	<b>0.30</b>	\$	81,963	\$	24,589
1273	Building Maintenance Supv	0.30	<b>0.30</b>	\$	68,823	\$	20,647
1274	Building Supv	0.60	<b>0.30</b>	\$	44,127	\$	13,238
1275	Building Services Supv	0.30	<b>0.30</b>	\$	50,970	\$	15,291
1280	Building Service Technician	0.60	<b>0.90</b>	\$	36,587	\$	32,928
1348	Info Systems Analyst II	1.90	<b>2.20</b>	\$	59,624	\$	131,173
1349	Info Systems Analyst III	0.30	<b>0.60</b>	\$	66,297	\$	39,778
1401	Info Systems Technician	2.10	<b>2.40</b>	\$	46,827	\$	112,384
1422	Drafting Aide	0.30	<b>0.30</b>	\$	42,630	\$	12,789
1423	Sr Drafting Aide	0.30	<b>0.30</b>	\$	48,667	\$	14,600
1527	HazMat Inspector II	0.30	<b>0.00</b>	\$	-	\$	-
1535	Clerical Assistant II	3.90	<b>3.00</b>	\$	32,749	\$	98,247
1612	Org Effectiveness Specialist III	0.00	<b>0.30</b>	\$	65,300	\$	19,590
1614	Org Effectiveness Specialist II	0.30	<b>0.00</b>	\$	-	\$	-
1648	Payroll Specialist II	0.30	<b>0.30</b>	\$	38,253	\$	11,476
1727	Principal Engineering Aide	1.30	<b>0.30</b>	\$	55,190	\$	16,557
1746	Word Processing Operator	2.90	<b>2.90</b>	\$	34,857	\$	101,086
1751	Project Officer I	0.30	<b>0.60</b>	\$	73,200	\$	43,920

# Metropolitan Wastewater

## Salary Schedule

### MUNICIPAL SEWER FUND

#### Administration

<i>Class</i>	<i>Position Title</i>	<i>FY 2004 Positions</i>	<i>FY 2005 Positions</i>	<i>Salary</i>	<i>Total</i>
1752	Project Officer II	0.75	<b>0.75</b>	\$ 85,224	\$ 63,918
1776	Public Information Clerk	2.00	<b>2.00</b>	\$ 34,873	\$ 69,745
1823	Safety Officer	1.20	<b>1.50</b>	\$ 63,660	\$ 95,490
1826	Safety Representative II	1.80	<b>2.40</b>	\$ 55,792	\$ 133,901
1830	Sr Mechanical Engineer	0.30	<b>0.60</b>	\$ 85,553	\$ 51,332
1844	Sr Account Clerk	0.30	<b>0.30</b>	\$ 39,953	\$ 11,986
1855	Sr Civil Engineer	1.10	<b>1.10</b>	\$ 85,566	\$ 94,123
1863	Sr Electrical Engineer	0.30	<b>0.30</b>	\$ 85,553	\$ 25,666
1871	Sr Public Information Officer	0.60	<b>0.60</b>	\$ 59,442	\$ 35,665
1872	Sr Planner	0.30	<b>0.30</b>	\$ 70,783	\$ 21,235
1876	Executive Secretary	0.30	<b>0.30</b>	\$ 48,367	\$ 14,510
1879	Sr Clerk/Typist	0.90	<b>1.20</b>	\$ 39,787	\$ 47,744
1899	Stock Clerk	0.30	<b>0.30</b>	\$ 33,210	\$ 9,963
1910	Student Engineer	2.00	<b>2.00</b>	\$ 27,971	\$ 55,941
1915	Sr Power Plant Supv	0.30	<b>0.30</b>	\$ 68,957	\$ 20,687
1917	Supv Management Analyst	0.78	<b>0.78</b>	\$ 74,732	\$ 58,291
1926	Info Systems Analyst IV	1.50	<b>1.50</b>	\$ 74,572	\$ 111,858
1940	Supv Public Info Officer	0.30	<b>0.30</b>	\$ 66,097	\$ 19,829
1971	Training Supv	0.00	<b>0.30</b>	\$ 65,497	\$ 19,649
1972	Safety & Training Manager	0.30	<b>0.30</b>	\$ 74,510	\$ 22,353
1980	Principal Utility Supv	0.30	<b>0.00</b>	\$ -	\$ -
2214	Deputy Director	0.60	<b>0.90</b>	\$ 115,083	\$ 103,575
2250	Asst Deputy Director	0.30	<b>0.30</b>	\$ 115,087	\$ 34,526
2267	MWWD Director	0.30	<b>0.30</b>	\$ 137,680	\$ 41,304
2270	Program Manager	0.90	<b>0.60</b>	\$ 115,087	\$ 69,052
2276	Asst MWWD Director	0.30	<b>0.30</b>	\$ 121,350	\$ 36,405
	Overtime Budgeted	0.00	<b>0.00</b>	\$ -	\$ 2,964
	<b>Total</b>	62.78	<b>62.38</b>		<b>\$ 3,716,520</b>
	<b>Municipal Sewer Fund Total</b>	486.78	<b>479.38</b>		<b>\$ 23,854,841</b>

### METROPOLITAN SEWER FUND

#### Operations and Maintenance

<i>Class</i>	<i>Position Title</i>	<i>FY 2004 Positions</i>	<i>FY 2005 Positions</i>	<i>Salary</i>	<i>Total</i>
1104	Account Clerk	4.00	<b>4.00</b>	\$ 34,769	\$ 139,076
1107	Administrative Aide II	3.00	<b>3.00</b>	\$ 46,229	\$ 138,686

# Metropolitan Wastewater

## Salary Schedule

### METROPOLITAN SEWER FUND

#### Operations and Maintenance

<i>Class</i>	<i>Position Title</i>	<i>FY 2004 Positions</i>	<i>FY 2005 Positions</i>	<i>Salary</i>	<i>Total</i>
1134	Sr Wastewater Plant Operator	3.00	<b>3.00</b>	\$ 62,287	\$ 186,860
1218	Assoc Management Analyst	2.00	<b>2.00</b>	\$ 58,745	\$ 117,490
1221	Assoc Engineer-Civil	4.00	<b>4.00</b>	\$ 73,769	\$ 295,074
1223	Assoc Engineer-Electrical	1.00	<b>1.00</b>	\$ 73,089	\$ 73,089
1275	Building Services Supv	1.00	<b>1.00</b>	\$ 50,969	\$ 50,969
1372	Pump Station Operator	11.00	<b>11.00</b>	\$ 47,821	\$ 526,026
1373	Pump Station Operations Supv	1.00	<b>1.00</b>	\$ 50,968	\$ 50,968
1389	Custodian II	1.00	<b>1.00</b>	\$ 28,718	\$ 28,718
1423	Sr Drafting Aide	1.00	<b>1.00</b>	\$ 48,668	\$ 48,668
1440	Equipment Operator II	1.00	<b>1.00</b>	\$ 45,571	\$ 45,571
1512	Heavy Truck Driver II	4.00	<b>4.00</b>	\$ 41,241	\$ 164,965
1522	Instrumentation & Control Supv	5.00	<b>5.00</b>	\$ 62,862	\$ 314,310
1523	Instrumentation & Control Tech	13.00	<b>12.00</b>	\$ 56,062	\$ 672,744
1535	Clerical Assistant II	7.00	<b>7.00</b>	\$ 32,749	\$ 229,242
1602	Machinist	3.00	<b>5.00</b>	\$ 50,634	\$ 253,171
1635	Painter	2.00	<b>2.00</b>	\$ 45,982	\$ 91,964
1648	Payroll Specialist II	3.00	<b>3.00</b>	\$ 38,254	\$ 114,763
1652	Plant Technician I	23.00	<b>21.00</b>	\$ 41,488	\$ 871,242
1653	Plant Technician II	20.00	<b>21.00</b>	\$ 45,598	\$ 957,567
1654	Plant Technician III	13.00	<b>12.00</b>	\$ 50,010	\$ 600,122
1666	Plant Process Control Electrician	12.00	<b>13.00</b>	\$ 56,074	\$ 728,968
1668	Plant Process Control Supv	13.00	<b>12.00</b>	\$ 62,062	\$ 744,747
1669	Plant Technician Supv	9.00	<b>9.00</b>	\$ 57,176	\$ 514,584
1670	Principal Plant Technician Sup	2.00	<b>2.00</b>	\$ 70,069	\$ 140,138
1671	Sr Plant Technician Supv	11.00	<b>11.00</b>	\$ 66,813	\$ 734,943
1717	Power Plant Operator	6.00	<b>6.00</b>	\$ 53,715	\$ 322,292
1718	Power Plant Supv	3.00	<b>3.00</b>	\$ 59,705	\$ 179,115
1727	Principal Engineering Aide	1.00	<b>1.00</b>	\$ 55,189	\$ 55,189
1746	Word Processing Operator	6.00	<b>6.00</b>	\$ 34,857	\$ 209,142
1855	Sr Civil Engineer	4.00	<b>4.00</b>	\$ 85,566	\$ 342,264
1879	Sr Clerk/Typist	1.00	<b>1.00</b>	\$ 39,790	\$ 39,790
1883	Wastewater Treatment Superintendent	4.00	<b>4.00</b>	\$ 91,193	\$ 364,772
1887	Wastewater Operations Supv	33.00	<b>33.00</b>	\$ 69,735	\$ 2,301,255
1888	Sr Wastewater Operation Supv	13.00	<b>13.00</b>	\$ 78,784	\$ 1,024,187
1890	Wastewater Plant Operator	49.00	<b>49.00</b>	\$ 59,022	\$ 2,892,080
1899	Stock Clerk	5.00	<b>5.00</b>	\$ 33,211	\$ 166,057

# Metropolitan Wastewater

## Salary Schedule

### METROPOLITAN SEWER FUND

#### Operations and Maintenance

<i>Class</i>	<i>Position Title</i>	<i>FY 2004 Positions</i>	<i>FY 2005 Positions</i>	<i>Salary</i>	<i>Total</i>
1901	Storekeeper III	1.00	<b>1.00</b>	\$ 44,119	\$ 44,119
1902	Storekeeper I	6.00	<b>6.00</b>	\$ 37,864	\$ 227,184
1915	Sr Power Plant Supv	1.00	<b>1.00</b>	\$ 68,957	\$ 68,957
1917	Supv Management Analyst	1.00	<b>1.00</b>	\$ 74,732	\$ 74,732
1985	Welder	2.00	<b>2.00</b>	\$ 48,968	\$ 97,935
2214	Deputy Director	1.00	<b>1.00</b>	\$ 115,075	\$ 115,075
2250	Asst Deputy Director	1.00	<b>1.00</b>	\$ 103,917	\$ 103,917
	Field Training Pay	0.00	<b>0.00</b>	\$ -	\$ 10,403
	Overtime Budgeted	0.00	<b>0.00</b>	\$ -	\$ 1,083,796
	Reg Pay For Engineers	0.00	<b>0.00</b>	\$ -	\$ 88,094
	Tech Cert Pay	0.00	<b>0.00</b>	\$ -	\$ 9,267
	Temporary Help	0.00	<b>0.00</b>	\$ -	\$ 61,787
	<b>Total</b>	<b>311.00</b>	<b>310.00</b>		<b>\$ 18,716,074</b>

#### Metro New Construction-CIP

<i>Class</i>	<i>Position Title</i>	<i>FY 2004 Positions</i>	<i>FY 2005 Positions</i>	<i>Salary</i>	<i>Total</i>
1153	Asst Engineer-Civil	6.00	<b>6.00</b>	\$ 63,507	\$ 381,040
1221	Assoc Engineer-Civil	9.00	<b>9.00</b>	\$ 73,768	\$ 663,916
1223	Assoc Engineer-Electrical	0.50	<b>0.50</b>	\$ 73,088	\$ 36,544
1227	Assoc Planner	1.00	<b>1.00</b>	\$ 61,286	\$ 61,286
1727	Principal Engineering Aide	1.00	<b>1.00</b>	\$ 55,189	\$ 55,189
1750	Project Assistant	1.00	<b>1.00</b>	\$ 63,662	\$ 63,662
1751	Project Officer I	1.00	<b>1.00</b>	\$ 73,202	\$ 73,202
1752	Project Officer II	0.50	<b>0.50</b>	\$ 85,222	\$ 42,611
1855	Sr Civil Engineer	2.00	<b>2.00</b>	\$ 85,566	\$ 171,132
1875	Structural Engineering Sr	1.00	<b>1.00</b>	\$ 85,552	\$ 85,552
1910	Student Engineer	0.50	<b>0.50</b>	\$ 27,972	\$ 13,986
	Overtime Budgeted	0.00	<b>0.00</b>	\$ -	\$ 69,130
	Reg Pay For Engineers	0.00	<b>0.00</b>	\$ -	\$ 16,910
	<b>Total</b>	<b>23.50</b>	<b>23.50</b>		<b>\$ 1,734,160</b>

#### Environ Mon & Tech Services-Metro

<i>Class</i>	<i>Position Title</i>	<i>FY 2004 Positions</i>	<i>FY 2005 Positions</i>	<i>Salary</i>	<i>Total</i>
1104	Account Clerk	1.00	<b>1.00</b>	\$ 34,768	\$ 34,768
1107	Administrative Aide II	1.00	<b>1.00</b>	\$ 46,228	\$ 46,228
1136	Asst Chemist	31.00	<b>31.00</b>	\$ 59,913	\$ 1,857,306



# Metropolitan Wastewater

## Salary Schedule

### METROPOLITAN SEWER FUND Environ Mon & Tech Services-Metro

<i>Class</i>	<i>Position Title</i>	<i>FY 2004 Positions</i>	<i>FY 2005 Positions</i>	<i>Salary</i>	<i>Total</i>
1160	Asst Laboratory Technician	2.00	<b>2.00</b>	\$ 37,405	\$ 74,809
1218	Assoc Management Analyst	1.00	<b>1.00</b>	\$ 58,746	\$ 58,746
1220	Assoc Chemist	7.00	<b>7.00</b>	\$ 69,165	\$ 484,153
1221	Assoc Engineer-Civil	1.00	<b>1.00</b>	\$ 73,769	\$ 73,769
1266	Boat Operator	1.00	<b>1.00</b>	\$ 47,878	\$ 47,878
1267	Sr Boat Operator	1.00	<b>1.00</b>	\$ 52,658	\$ 52,658
1348	Info Systems Analyst II	2.00	<b>2.00</b>	\$ 59,625	\$ 119,250
1535	Clerical Assistant II	2.00	<b>2.00</b>	\$ 32,749	\$ 65,498
1580	Laboratory Technician	14.00	<b>14.00</b>	\$ 44,956	\$ 629,380
1610	Marine Biologist II	20.00	<b>20.00</b>	\$ 59,661	\$ 1,193,227
1611	Marine Biologist III	3.00	<b>3.00</b>	\$ 69,367	\$ 208,102
1622	Biologist III	1.00	<b>1.00</b>	\$ 69,239	\$ 69,239
1624	Biologist II	6.00	<b>6.00</b>	\$ 59,844	\$ 359,066
1648	Payroll Specialist II	1.00	<b>1.00</b>	\$ 38,254	\$ 38,254
1746	Word Processing Operator	1.00	<b>1.00</b>	\$ 34,857	\$ 34,857
1750	Project Assistant	1.00	<b>1.00</b>	\$ 63,662	\$ 63,662
1751	Project Officer I	1.00	<b>1.00</b>	\$ 73,202	\$ 73,202
1851	Sr Marine Biologist	1.00	<b>1.00</b>	\$ 79,901	\$ 79,901
1854	Sr Chemist	2.00	<b>2.00</b>	\$ 79,688	\$ 159,376
1872	Sr Planner	1.00	<b>1.00</b>	\$ 70,785	\$ 70,785
1879	Sr Clerk/Typist	2.00	<b>2.00</b>	\$ 39,789	\$ 79,578
2214	Deputy Director	1.00	<b>1.00</b>	\$ 115,075	\$ 115,075
2250	Asst Deputy Director	1.00	<b>1.00</b>	\$ 103,901	\$ 103,901
	Ex Perf Pay-Classified	0.00	<b>0.00</b>	\$ -	\$ 4,848
	Overtime Budgeted	0.00	<b>0.00</b>	\$ -	\$ 181,675
	Reg Pay For Engineers	0.00	<b>0.00</b>	\$ -	\$ 25,000
	<b>Total</b>	<b>106.00</b>	<b>106.00</b>	<b>\$</b>	<b>\$ 6,404,191</b>

### Administration-Metro

<i>Class</i>	<i>Position Title</i>	<i>FY 2004 Positions</i>	<i>FY 2005 Positions</i>	<i>Salary</i>	<i>Total</i>
1104	Account Clerk	3.00	<b>3.00</b>	\$ 34,769	\$ 104,306
1105	Administrative Aide I	0.00	<b>0.70</b>	\$ 40,043	\$ 28,030
1106	Sr Management Analyst	7.30	<b>6.30</b>	\$ 66,199	\$ 417,051
1107	Administrative Aide II	5.40	<b>4.00</b>	\$ 46,229	\$ 184,915
1153	Asst Engineer-Civil	7.90	<b>7.90</b>	\$ 63,507	\$ 501,703
1157	Asst Engineer-Electrical	2.20	<b>2.20</b>	\$ 64,232	\$ 141,311

# Metropolitan Wastewater

## Salary Schedule

### METROPOLITAN SEWER FUND

#### Administration-Metro

<i>Class</i>	<i>Position Title</i>	<i>FY 2004 Positions</i>	<i>FY 2005 Positions</i>	<i>Salary</i>	<i>Total</i>
1167	Asst Engineer-Mechanical	0.70	<b>0.70</b>	\$ 64,231	\$ 44,962
1218	Assoc Management Analyst	7.75	<b>7.75</b>	\$ 58,746	\$ 455,279
1221	Assoc Engineer-Civil	15.70	<b>13.60</b>	\$ 73,768	\$ 1,003,250
1223	Assoc Engineer-Electrical	1.70	<b>1.70</b>	\$ 73,089	\$ 124,251
1225	Assoc Engineer-Mechanical	0.70	<b>1.40</b>	\$ 74,126	\$ 103,776
1227	Assoc Planner	0.70	<b>0.70</b>	\$ 61,286	\$ 42,900
1243	Info Systems Administrator	0.70	<b>0.70</b>	\$ 81,961	\$ 57,373
1273	Building Maintenance Supv	0.70	<b>0.70</b>	\$ 68,821	\$ 48,175
1274	Building Supv	1.40	<b>0.70</b>	\$ 44,124	\$ 30,887
1275	Building Services Supv	0.70	<b>0.70</b>	\$ 50,970	\$ 35,679
1280	Building Service Technician	1.40	<b>2.10</b>	\$ 36,587	\$ 76,832
1348	Info Systems Analyst II	2.10	<b>2.80</b>	\$ 59,624	\$ 166,948
1349	Info Systems Analyst III	0.70	<b>1.40</b>	\$ 66,296	\$ 92,814
1401	Info Systems Technician	4.90	<b>5.60</b>	\$ 46,827	\$ 262,229
1422	Drafting Aide	0.70	<b>0.70</b>	\$ 42,629	\$ 29,840
1423	Sr Drafting Aide	0.70	<b>0.70</b>	\$ 48,667	\$ 34,067
1527	HazMat Inspector II	0.70	<b>0.00</b>	\$ -	\$ -
1535	Clerical Assistant II	8.10	<b>6.00</b>	\$ 32,748	\$ 196,489
1612	Org Effectiveness Specialist III	0.00	<b>0.70</b>	\$ 65,301	\$ 45,711
1614	Org Effectiveness Specialist II	0.70	<b>0.00</b>	\$ -	\$ -
1648	Payroll Specialist II	0.70	<b>0.70</b>	\$ 38,254	\$ 26,778
1727	Principal Engineering Aide	2.70	<b>1.70</b>	\$ 55,189	\$ 93,821
1746	Word Processing Operator	5.60	<b>5.60</b>	\$ 34,857	\$ 195,201
1751	Project Officer I	0.70	<b>1.40</b>	\$ 73,201	\$ 102,482
1752	Project Officer II	1.75	<b>1.75</b>	\$ 85,223	\$ 149,141
1776	Public Information Clerk	3.00	<b>3.00</b>	\$ 34,873	\$ 104,618
1823	Safety Officer	2.80	<b>3.50</b>	\$ 63,659	\$ 222,808
1826	Safety Representative II	4.20	<b>5.60</b>	\$ 55,792	\$ 312,436
1830	Sr Mechanical Engineer	0.70	<b>1.40</b>	\$ 85,553	\$ 119,774
1844	Sr Account Clerk	0.70	<b>0.70</b>	\$ 39,953	\$ 27,967
1855	Sr Civil Engineer	3.40	<b>3.40</b>	\$ 85,566	\$ 290,924
1863	Sr Electrical Engineer	0.70	<b>0.70</b>	\$ 85,553	\$ 59,887
1871	Sr Public Information Officer	1.40	<b>1.40</b>	\$ 59,441	\$ 83,218
1872	Sr Planner	0.70	<b>0.70</b>	\$ 70,786	\$ 49,550
1876	Executive Secretary	1.06	<b>0.70</b>	\$ 48,366	\$ 33,856
1879	Sr Clerk/Typist	2.10	<b>2.80</b>	\$ 39,789	\$ 111,408

# Metropolitan Wastewater

## Salary Schedule

### METROPOLITAN SEWER FUND

#### Administration-Metro

<i>Class</i>	<i>Position Title</i>	<i>FY 2004 Positions</i>	<i>FY 2005 Positions</i>	<i>Salary</i>	<i>Total</i>
1899	Stock Clerk	0.70	<b>0.70</b>	\$ 33,211	\$ 23,248
1910	Student Engineer	3.50	<b>3.50</b>	\$ 27,971	\$ 97,898
1915	Sr Power Plant Supv	0.70	<b>0.70</b>	\$ 68,956	\$ 48,269
1917	Supv Management Analyst	2.22	<b>2.22</b>	\$ 74,733	\$ 165,907
1926	Info Systems Analyst IV	3.50	<b>3.50</b>	\$ 74,572	\$ 261,001
1940	Supv Public Info Officer	0.70	<b>0.70</b>	\$ 66,096	\$ 46,267
1971	Training Supv	0.00	<b>0.70</b>	\$ 65,494	\$ 45,846
1972	Safety & Training Manager	0.70	<b>0.70</b>	\$ 74,509	\$ 52,156
1980	Principal Utility Supv	0.70	<b>0.00</b>	\$ -	\$ -
2153	Deputy City Manager	0.36	<b>0.36</b>	\$ 179,017	\$ 64,446
2214	Deputy Director	1.40	<b>2.10</b>	\$ 115,083	\$ 241,675
2250	Asst Deputy Director	0.70	<b>0.70</b>	\$ 115,087	\$ 80,561
2267	MWWD Director	0.70	<b>0.70</b>	\$ 137,679	\$ 96,375
2270	Program Manager	2.10	<b>1.40</b>	\$ 98,999	\$ 138,598
2276	Asst MWWD Director	0.70	<b>0.70</b>	\$ 121,351	\$ 84,946
	Overtime Budgeted	0.00	<b>0.00</b>	\$ -	\$ 118,022
	Reg Pay For Engineers	0.00	<b>0.00</b>	\$ -	\$ 97,230
	Temporary Help	0.00	<b>0.00</b>	\$ -	\$ 27,738
	<b>Total</b>	127.44	<b>126.48</b>	\$	<b>7,902,830</b>
	<b>Metropolitan Sewer Fund Total</b>	567.94	<b>565.98</b>	\$	<b>34,757,255</b>
	<b>METROPOLITAN WASTEWATER TOTAL</b>	1,077.08	<b>1,065.71</b>	\$	<b>59,726,389</b>

## Five-Year Expenditure Forecast

	<b>FY 2005 FINAL</b>	FY 2006 FORECAST	FY 2007 FORECAST	FY 2008 FORECAST	FY 2009 FORECAST	FY 2010 FORECAST
Positions	<b>1,065.71</b>	1,102.71	1,100.71	1,098.71	1,096.71	1,094.71
Personnel Expense	<b>\$ 87,061,944</b>	\$ 92,330,339	\$ 97,697,616	\$ 103,496,198	\$ 109,775,130	\$ 112,962,888
Non-Personnel Expense	<b>\$ 408,832,825</b>	\$ 428,483,670	\$ 444,764,204	\$ 467,657,920	\$ 485,506,836	\$ 497,619,264
<b>TOTAL EXPENDITURES</b>	<b>\$ 495,894,769</b>	\$ 520,814,009	\$ 542,461,820	\$ 571,154,118	\$ 595,281,966	\$ 610,582,152

Excludes expenditures and positions associated with the Capital Improvements Program.

# Metropolitan Wastewater

## Five-Year Expenditure Forecast

Metropolitan Wastewater	
<b>Fiscal Year 2006</b>	<p>Increase in IT support.</p> <p>Storm Water Addition of 38.00 positions and support as identified in the Urban Runoff Management Plan (URMP) to comply with the updated Municipal Storm Water Permit.</p> <p>Operations and Maintenance Increase in chemicals and electricity at North City Water Reclamation Plant, Metro Biosolids Center, and South Bay Water Reclamation Plant.</p> <p>Increase in chemicals at Point Loma Wastewater Treatment Plant.</p> <p>Increase in electricity at Pump Station 1, Pump Station 2, Grove Avenue Pump Station, and Otay River Pump Station.</p> <p>Increase in potable water at North City Water Reclamation Plant.</p> <p>Increase in chemicals and electrical consumption not covered by inflationary expenses</p> <p>Wastewater Collection Reduction of 2.00 limited Utility Worker I positions from Main Cleaning section.</p> <p>Environmental Monitoring &amp; Technical Services Increase in rent at the Alvarado Laboratories.</p> <p>Increase in overtime for other government agencies.</p> <p>Administration</p> <p>Engineering and Program Management</p> <p>Information &amp; Organizational Support Addition of 1.00 Associate Management Analyst for Centralized Operations Management Network Data Management Support.</p> <p>Increase to training-in-town for Safety Program staff.</p> <p>Reduction of prior year equipment outlay.</p> <p>Services and Contracts Reduction in Debt Service Requirements.</p> <p>Increase in Contingency Reserve.</p>

# Metropolitan Wastewater

## Five-Year Expenditure Forecast

Metropolitan Wastewater	
<b>Fiscal Year 2007</b>	<p><b>Storm Water</b> Additional support as identified in the URMP to comply with the updated Municipal Storm Water Permit. Operations and Maintenance Increase in chemicals and electricity at North City Water Reclamation Plant, Metro Biosolids Center, and South Bay Water Reclamation Plant.</p> <p>Increase in chemicals at Point Loma Wastewater Treatment Plant.</p> <p>Increase in electricity at Pump Station 1, Pump Station 2, Grove Avenue Pump Station, and Otay River Pump Station.</p> <p>Reduction in IT support.</p> <p>Increase in chemicals and electrical consumption not covered by inflationary expenses</p> <p><b>Wastewater Collection</b> Reduction of 1.00 Equipment Operator I and 1.00 Utility Worker I from Main Cleaning.</p> <p>Reduction IT support.</p> <p><b>Environmental Monitoring &amp; Technical Services</b> Removal of onetime expense from prior year.</p> <p>Increase to provide renewal of the City's wastewater treatment process waiver.</p> <p><b>Administration</b> Engineering and Program Management Reduction in IT support.</p> <p><b>Information &amp; Organizational Support</b> Increase in safety and training and motive equipment.</p> <p>Increase in IT support.</p> <p>Removal of prior year equipment outlay.</p> <p><b>Services and Contracts</b> Reduction in Debt Service Requirements.</p> <p>Increase in Contingency Reserve.</p>

# Metropolitan Wastewater

## Five-Year Expenditure Forecast

	Metropolitan Wastewater
<b>Fiscal Year 2008</b>	<p><b>Storm Water</b> Additional support as identified in the URMP to comply with the updated Municipal Storm Water Permit.</p> <p><b>Operations and Maintenance</b> Increase in chemicals and electricity at North City Water Reclamation Plant, Metro Biosolids Center, and South Bay Water Reclamation Plant.</p> <p>Increase in chemicals at Point Loma Wastewater Treatment Plant.</p> <p>Increase in electricity at Pump Station 1, Pump Station 2, Grove Avenue Pump Station, and Otay River Pump Station.</p> <p>Increase in chemicals and electrical consumption not covered by inflationary expenses</p> <p><b>Wastewater Collection</b> Reduction of 1.00 Equipment Operator I and 1.00 Utility Worker I from Main Cleaning.</p> <p>Reduction in IT support.</p> <p><b>Administration</b> Engineering and Program Management Reduction in IT support.</p> <p><b>Information &amp; Organizational Support</b> Increase in modular furniture reconfiguration and motive equipment outlay.</p> <p>Increase in IT support.</p> <p>Removal of prior year equipment outlay.</p> <p><b>Services and Contracts</b> Increase in Debt Service Requirement.</p> <p>Increase in Contingency Reserve.</p> <p>Increase in support for Customer Information System (CIS) replacement to a Customer Relations Management (CRM)-type package.</p>

# Metropolitan Wastewater

## Five-Year Expenditure Forecast

	Metropolitan Wastewater
<b>Fiscal Year 2009</b>	<p>Storm Water Additional support as identified in the URMP to comply with the updated Municipal Storm Water Permit.</p> <p>Operations and Maintenance Increase in chemicals and electricity at North City Water Reclamation Plant, Metro Biosolids Center, and South Bay Water Reclamation Plant.</p> <p>Increase in chemicals at Point Loma Wastewater Treatment Plant.</p> <p>Increase in electricity at Pump Station 1, Pump Station 2, Grove Avenue Pump Station, and Otay River Pump Station.</p> <p>Increase in IT support.</p> <p>Increase in chemicals and electrical consumption not covered by inflationary expenses</p> <p>Wastewater Collection Reduction of 2.00 limited Utility Worker I positions from Main Cleaning.</p> <p>Increase in IT support.</p> <p>Environmental Monitoring &amp; Technical Services Increase in IT support.</p> <p>Administration Engineering and Program Management Increase in IT support.</p> <p>Information &amp; Organizational Support Increase in support for training.</p> <p>Removal of prior year modular furniture reconfiguration and motive equipment outlay.</p> <p>Services and Contracts Increase in Debt Service Requirement.</p> <p>Reduction in Contingency Reserve.</p> <p>Removal of prior year support for CIS replacement to a CRM-type package.</p>

# Metropolitan Wastewater

## Five-Year Expenditure Forecast

Metropolitan Wastewater	
<b>Fiscal Year 2010</b>	<p>Operations and Maintenance Increase in chemicals and electricity at North City Water Reclamation Plant, Metro Biosolids Center, and South Bay Water Reclamation Plant.</p> <p>Increase in chemicals at Point Loma Wastewater Treatment Plant.</p> <p>Increase in electricity at Pump Station 1, Pump Station 2, Grove Avenue Pump Station, and Otay River Pump Station.</p> <p>Reduction in IT support.</p> <p>Increase in chemicals and electrical consumption not covered by inflationary expenses</p> <p>Wastewater Collection Reduction of 1.00 Equipment Operator I and 1.00 Utility Worker I from Main Cleaning.</p> <p>Reduction in IT support.</p> <p>Environmental Monitoring &amp; Technical Services Reduction in IT support.</p> <p>Administration Engineering and Program Management Reduction in IT support.</p> <p>Information and Organizational Support Increase in IT support.</p> <p>Services and Contracts Reduction in Debt Service Requirements.</p> <p>Support for maintenance of CRM-type package.</p> <p>Reduction in Contingency Reserve.</p>



# Metropolitan Wastewater

## Revenue and Expense Statement

SEWER FUNDS 41506 & 41509

	FY 2003* BUDGET	FY 2004* BUDGET	FY 2005* FINAL
<b>BEGINNING BALANCE AND RESERVE</b>			
45-Day Operating Reserve	\$ 22,180,965	\$ 25,551,917	\$ 26,292,687
Balance from Prior Year	\$ 2,393,674	\$ 53,260,624	\$ 884,764
Prior Year Continuing Appropriations	\$ 172,994,490	\$ 106,722,351	\$ 136,123,947
<b>TOTAL BALANCE</b>	<b>\$ 197,569,129</b>	<b>\$ 185,534,892</b>	<b>\$ 163,301,398</b>
<b>REVENUE</b>			
Bond Proceeds	\$ 213,110,000	\$ 213,110,000	\$ 313,627,288
Capacity Charges	\$ 15,000,000	\$ 18,000,000	\$ 17,000,000
Contributions in Aid	\$ 1,200,000	\$ 7,083,111	\$ 5,482,698
Electrical Cogeneration	\$ 818,279	\$ 1,009,000	\$ 1,101,870
Grants Receipts	\$ 3,691,054	\$ 963,198	\$ 605,718
Interest Earnings	\$ 14,500,000	\$ 14,500,000	\$ 5,000,000
New Sewer Connections	\$ 150,000	\$ 200,000	\$ 200,000
Other Revenue	\$ 229,389	\$ 287,400	\$ 261,497
Services Rendered to Others	\$ 5,617,035	\$ 7,385,170	\$ 6,872,066
Sewage Treatment Plant Services	\$ 62,738,426	\$ 69,043,573	\$ 63,104,427
Sewer Service Charges	\$ 178,324,583	\$ 208,488,168	\$ 224,000,000
State Revolving Fund Proceeds	\$ 18,516,392	\$ 3,163,039	\$ 20,980,158
<b>TOTAL REVENUE</b>	<b>\$ 513,895,158</b>	<b>\$ 543,232,659</b>	<b>\$ 658,235,722</b>
<b>TOTAL BALANCE AND REVENUE</b>	<b>\$ 711,464,287</b>	<b>\$ 728,767,551</b>	<b>\$ 821,537,120</b>
<b>CAPITAL IMPROVEMENTS PROGRAM (CIP)</b>			
CIP Expenditures	\$ 137,326,082	\$ 118,762,099	\$ 153,356,199
CIP Expenditures of Prior Year Appropriations	\$ 167,994,490	\$ 101,722,351	\$ 104,831,260
Phase Funded CIP Projects	\$ 28,661,085	\$ 45,682,640	\$ 50,407,755
<b>TOTAL CIP EXPENSE</b>	<b>\$ 333,981,657</b>	<b>\$ 266,167,090</b>	<b>\$ 308,595,214</b>
<b>OPERATING EXPENSE</b>			
Assurance Program	\$ 4,000,000	\$ 8,000,000	\$ 8,000,000
Debt Service	\$ 77,045,937	\$ 81,943,030	\$ 82,555,238
Department Expenditures & Encumbrances	\$ 198,647,068	\$ 225,702,474	\$ 219,973,453
Unallocated Reserve	\$ 4,295,536	\$ 4,295,536	\$ 3,295,536
<b>TOTAL OPERATING EXPENSE</b>	<b>\$ 283,988,541</b>	<b>\$ 319,941,040</b>	<b>\$ 313,824,227</b>
<b>TOTAL EXPENSE</b>	<b>\$ 617,970,198</b>	<b>\$ 586,108,130</b>	<b>\$ 622,419,441</b>
<b>RESERVE</b>			
45-Day Operating Reserve/Contingency	\$ 25,551,917	\$ 26,292,687	\$ 26,371,150

# Metropolitan Wastewater

## Revenue and Expense Statement

SEWER FUNDS 41506 & 41509

	FY 2003*	FY 2004*	FY 2005*
	BUDGET	BUDGET	FINAL
<b>RESERVE</b>			
Emergency Bond Reserve	\$ 5,000,000	\$ 5,000,000	\$ 5,000,000
<b>TOTAL RESERVE</b>	\$ 30,551,917	\$ 31,292,687	\$ 31,371,150
<b>TOTAL RESERVE</b>	\$ 30,551,917	\$ 31,292,687	\$ 31,371,150
<b>BALANCE</b>	\$ 62,942,172	\$ 111,366,734	\$ 167,746,529
<b>TOTAL EXPENSE, RESERVE AND BALANCE</b>	\$ 711,464,287	\$ 728,767,551	\$ 821,537,120

\* At the time of publication audited financial statements for Fiscal Year 2003 were not available. Therefore, the Fiscal Years 2003 and 2004 columns reflect final budget amounts from the Fiscal Year 2003 and 2004 Annual Budgets. As such, balances and reserves do not reflect carryover from the previous fiscal year.