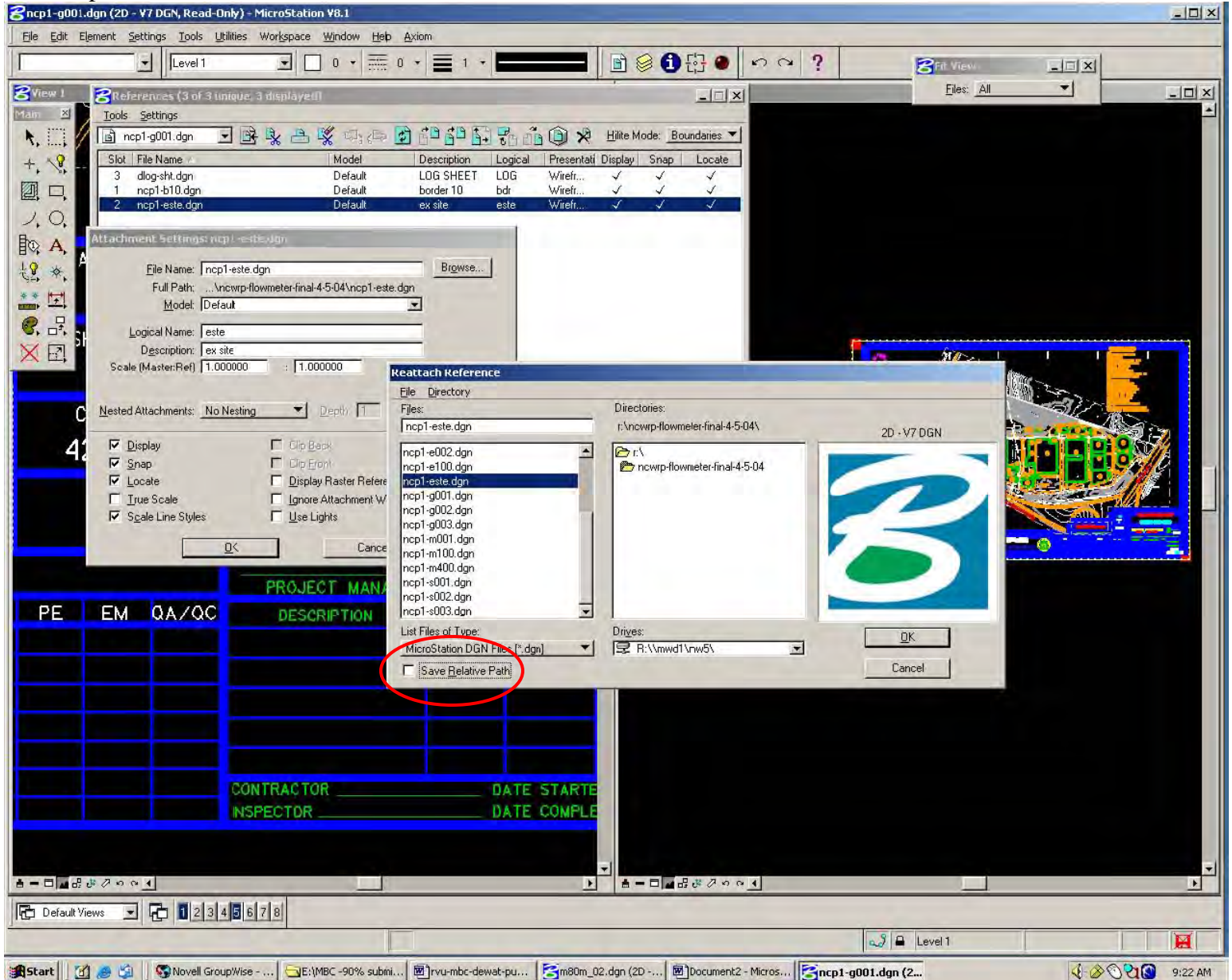


V7 – REFERENCE FILE “SAVE FULL PATH”

Consultants on MWWd Cadd projects must use this setting for Microstation V7 files.

Note - if you do not do this when first attaching ref files, you must detach and reattach the ref files with this enabled.

Savefullpathv7v8.doc



V8 – REFERENCE FILE “SAVE RELATIVE PATH”

Consultants on MWWd Cadd projects must use this setting for Microstation V8 files.

Note - if you do not do this when first attaching ref files, you must detach and reattach the ref files with this enabled.