



America's Finest City

THE CITY OF SAN DIEGO



Assessment Engineer's Report

CAMPUS POINT MAINTENANCE ASSESSMENT DISTRICT

Annual Update for Fiscal Year 2012

under the provisions of the

**San Diego Maintenance Assessment District Ordinance
of the San Diego Municipal Code**

and

**Landscaping & Lighting Act of 1972
of the California Streets & Highways Code**

**Prepared For
City of San Diego, California**

Prepared By
EFS Engineering, Inc.
P.O. Box 22370
San Diego, CA 92192-2370
(858) 752-3490

June 2011

CITY OF SAN DIEGO

Mayor

Jerry Sanders

City Council Members

Sherrí Lightner
District 1

Kevin Faulconer
District 2 (Council President Pro Tem)

Todd Gloria
District 3

Anthony Young
District 4 (Council President)

Carl DeMaio
District 5

Lori Zapf
District 6

Marti Emerald
District 7

David Alvarez
District 8

City Attorney

Jan Goldsmith

Chief Operating Officer

Jay Goldstone

City Clerk

Elizabeth Maland

Independent Budget Analyst

Andrea Tevlin

City Engineer

Afshin Oskoui

Assessment Engineer

EFS Engineering, Inc.

Table of Contents

Assessment Engineer's Report

Campus Point Maintenance Assessment District

Preamble	1
Executive Summary	2
Background	3
District Proceedings for Fiscal Year 2012	3
Bond Declaration	3
District Boundary	3
Project Description.....	4
Separation of General and Special Benefits.....	4
Cost Estimate	5
Estimated Costs.....	5
Annual Cost-Indexing.....	5
Method of Apportionment	5
Estimated Benefit of the Improvements.....	5
Apportionment Methodology.....	5
Sample Calculations.....	6
Summary Results	7

EXHIBITS

Exhibit A: District Boundary

Exhibit B: Estimated Annual Expenses, Revenues & Reserves

Exhibit C: Assessment Roll

Assessment Engineer's Report

Campus Point

Maintenance Assessment District

Preamble

Pursuant to the provisions of the "San Diego Maintenance Assessment District Ordinance" (being Division 2, Article 5, Chapter VI beginning at Section 65.0201 of the San Diego Municipal Code), provisions of the "Landscaping and Lighting Act of 1972" (being Part 2 of Division 15 of the California Streets and Highways Code), applicable provisions of "Proposition 218" (being Article XIID of the California Constitution), and provisions of the "Proposition 218 Omnibus Implementation Act" (being California Senate Bill 919) (the aforementioned provisions are hereinafter referred to collectively as "Assessment Law"), in connection with the proceedings for the CAMPUS POINT MAINTENANCE ASSESSMENT DISTRICT (hereinafter referred to as "District"), EFS ENGINEERING, INC., as Assessment Engineer to the City of San Diego for these proceedings, submits herewith this report for the District as required by California Streets and Highways Code Section 22565.

FINAL APPROVAL, BY RESOLUTION NO. _____ ,
ADOPTED BY THE CITY COUNCIL OF THE CITY OF SAN
DIEGO, COUNTY OF SAN DIEGO, CALIFORNIA, ON THE
_____ DAY OF _____, 2011.

Elizabeth Maland, CITY CLERK
CITY OF SAN DIEGO
STATE OF CALIFORNIA



Executive Summary

Project: Campus Point
 Maintenance Assessment District

Apportionment Method: Equivalent Dwelling Unit (EDU)

	FY 2011	FY 2012 ⁽¹⁾	Maximum Authorized
Total Parcels Assessed:	14	13	--
Total Estimated Assessment:	\$24,586	\$24,476	--
Total Number of EDUs:	57.85	57.59	--
Assessment per EDU:	\$425.00	\$425.00	\$425.00

⁽¹⁾ FY 2012 is the City's Fiscal Year 2012, which begins July 1, 2011 and ends June 30, 2012. Total Parcels Assessed, Total Estimated Assessment, and Total Number of EDUs may vary from prior year values due to parcel changes.

District History: The District was established in May 1981.

Annual Cost-Indexing: Indexing of assessments is not permitted under the current apportionment methodology.

Bonds: No bonds will be issued in connection with this District



Background

The Campus Point Maintenance Assessment District (District) was established in May 1981. The original Assessment Engineer's Report is on file in the City of San Diego (City) Clerk's office. The District funds the maintenance of twenty-five acres of open space containing natural trees and vegetation.

District Proceedings for Fiscal Year 2012

This District is authorized and administered under the provisions of the "San Diego Maintenance Assessment District Procedural Ordinance of 1986" (being Division 2, Article 5, Chapter VI beginning at Section 65.0201 of the San Diego Municipal Code), provisions of the "Landscaping and Lighting Act of 1972" (being Part 2 of Division 15 of the California Streets and Highways Code), applicable provisions of "Proposition 218" (being Article XIID of the California Constitution), and provisions of the "Proposition 218 Omnibus Implementation Act" (being California Senate Bill 919) (the aforementioned provisions are hereinafter referred to collectively as "Assessment Law").

The purpose of the proposed proceedings and this Assessment Engineer's Report is to update the District budget and assessments for Fiscal Year 2012. The Fiscal Year 2012 assessments proposed within this Assessment Engineer's Report are equal to or less than the maximum authorized assessment. Therefore, the vote requirements of Section 4 of Article XIID do not apply to these proceedings.

A public hearing will be scheduled where public testimony will be heard by the Council, and the Council may, at its discretion, adopt a resolution ordering the levying of the proposed assessments.

Bond Declaration

No bonds will be issued in connection with this District.

District Boundary

The Boundary Map & Assessment Diagram for the District is on file in the Maintenance Assessment Districts Section of the Park and Recreation Department of the City of San Diego and by reference is made a part of this report. The Boundary Map & Assessment Diagram



is available for public inspection during normal business hours. The District boundary is depicted in Exhibit A.

Project Description

The project to be funded by the proposed assessments is the maintenance of open space containing natural trees and vegetation. Brush management of City-owned open space in accordance with the Municipal Code §142.0412 is performed by the City's General Fund.

The engineering drawings for the improvements maintained by the District are on file at Maps and Records in the Development Services Department and are incorporated herein. The improvements and services provided by the District will be maintained in accordance with specifications and contracts on file with the Park and Recreation Department. These documents are available for public inspection during normal business hours.

Separation of General and Special Benefits

The proceeds from the assessment will be used to fund enhanced improvements, services and activities within the District that, in absence of the assessment, otherwise would not be provided at an enhanced level or frequency of service. The District will continue to receive the same level of general services provided to the public at large under City-funded and administered programs, as determined annually, for maintenance of public facilities and improvements (e.g., street trees, sidewalks, street lights, etc.), including street sweeping and graffiti removal on public property.

Consistent with City policy for the public at large, the City will provide the District with annual contributions from the Environmental Growth Fund for open space maintenance (\$80.00 per acre). These cost allocations, reviewed and adjusted annually by the City, are considered to be "general benefits" administered by the District. All other maintenance, operations, and administration costs associated with the District, which exceed the City's contribution to the public at large, are accordingly considered to be "special benefits" funded by the District.



Cost Estimate

Estimated Costs

Estimated Fiscal Year 2012 annual expenses, revenues, reserves, and assessments (provided by the City) for the District are included as Exhibit B hereto.

Annual Cost-Indexing

With the passage of Proposition 218, any proposed increase in assessments must be placed for approval before the property owners by a mail ballot and a public hearing process, similar to these proceedings. A majority of ballots received must be affirmative for the City Council to confirm and levy the increased assessments. The current maximum authorized assessment established in 1981 is not authorized to be indexed (increased or decreased) without a vote of the affected property owners.

Method of Apportionment

Estimated Benefit of the Improvements

Creation of open space is consistent with the goals contained in the City's General Plan. Open space provides benefit through preserving natural resources, controlling urban form, providing for outdoor recreation, providing for the public health and safety, serving as drainage corridors, and view corridors. Open space also produces lower development density, which benefits the community's residents by not further increasing traffic congestion, noise levels, and storm water runoff pollutants. These open space assets, generally dedicated to the public during the development process, require ongoing management and maintenance to maintain their functionality, aesthetics, and continued contribution to the quality of life in the community. All parcels within the District benefit from these enhanced open space areas being maintained by the District.

Apportionment Methodology

The total cost for maintenance of District improvements will be assessed to the various parcels within the District in proportion to the



estimated Equivalent Dwelling Units (EDUs) assigned to a parcel in relationship to the total EDUs of all the parcels within the District.

EDUs for each parcel have been determined based on a Density Factor applicable to the subject land use as shown in the following equation:

$EDUs = (Acres \text{ or } Units) \times \text{Density Factor}$

Table 1 summarizes the Density Factors for land uses within the District.

TABLE 1: Density Factors

Land Use/Zoning	Code	Density Factor
Industrial	IND	1.0 per acre
Open Space	OSP	0.0 per acre

Sample Calculations

As described above, the number of Equivalent Dwelling Units (EDUs) assigned to each parcel in the District has been calculated based on each parcel's land use and the identified apportionment factors, as shown in the following equation:

$EDUs = (Acres \text{ or } Units) \times \text{EDU Factor}$

Shown below is a sample EDU calculation for the most common land use found in the District.

- **1/2-acre Industrial Property**
 $EDUs = 0.50 \text{ acres} \times 1.00 = 0.50 \text{ EDUs}$

The total assessment for each parcel in the District is based on the calculated EDUs for the parcel and the applicable unit assessment rate, as shown in the following equation:

$\text{Total Assessment} = \text{Total EDUs} \times \text{Unit Assessment Rate}$
--

The EDUs calculated for each property can be found in the Assessment Roll (Exhibit C).



Summary Results

The District boundary is presented in Exhibit A.

An estimate of the costs of the improvements provided by the District is included as Exhibit B to this report.


The assessment methodology utilized is as described in the text of this report. Based on this methodology, the EDUs and Fiscal Year 2012 District assessment for each parcel were calculated and are shown in the Assessment Roll (Exhibit C).

Each lot or parcel of land within the District has been identified by unique County Assessor's Parcel Number on the Assessment Roll and the Boundary Map and Assessment Diagram referenced herein. The net assessment for each parcel for Fiscal Year 2012 can be found on the Assessment Roll.

This report has been prepared and respectfully submitted by:

EFS ENGINEERING, INC.




Eugene F. Shank, PE C 52792


Sharon F. Risse



I, _____, as CITY CLERK of the CITY OF SAN DIEGO, COUNTY OF SAN DIEGO, CALIFORNIA, do hereby certify that the Assessment as shown on the Assessment Roll, together with the Assessment Diagram, both of which are incorporated into this report, were filed in my office on the ____ day of _____, 2011.

Elizabeth Maland, CITY CLERK
CITY OF SAN DIEGO
STATE OF CALIFORNIA

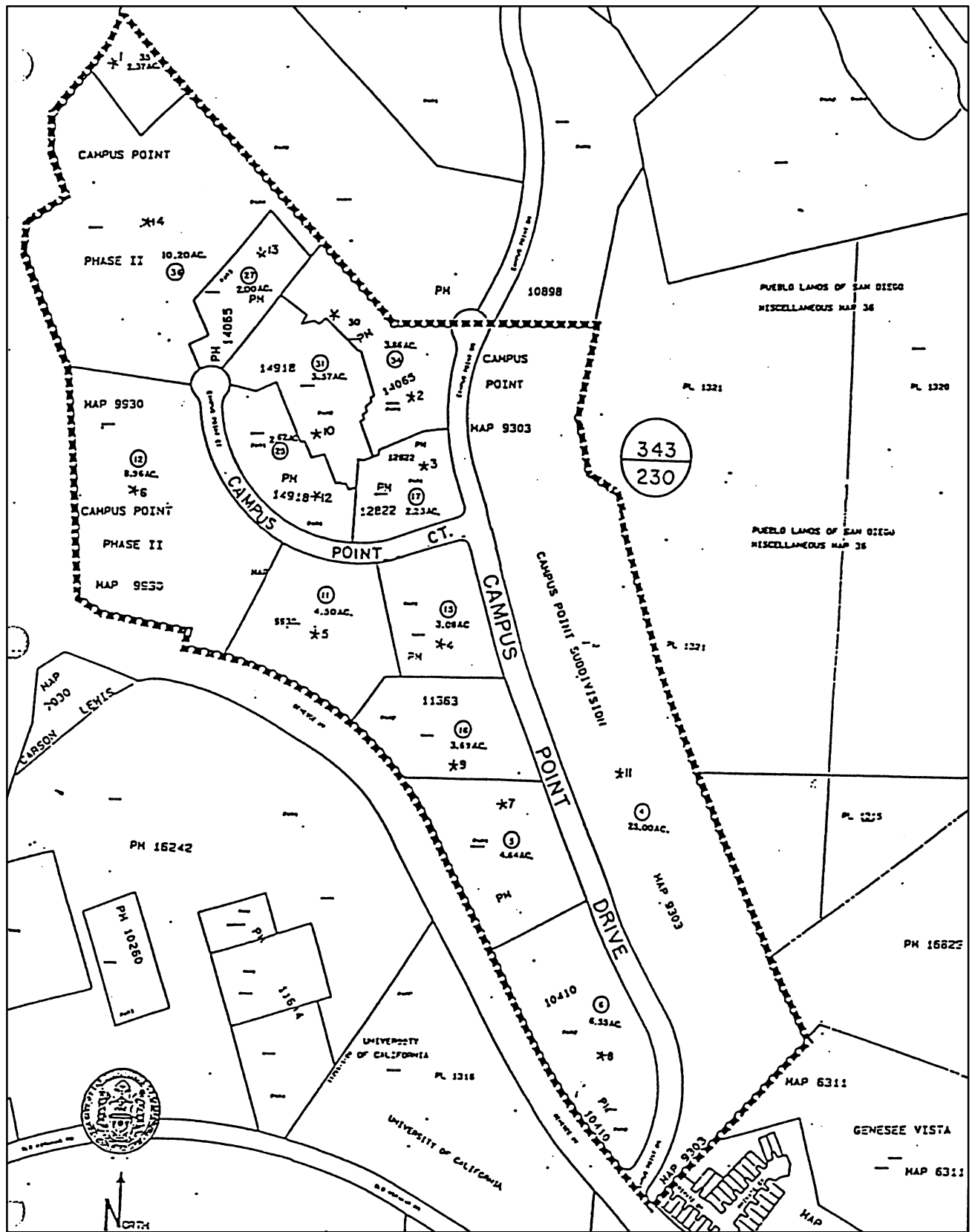
I, _____, as CITY CLERK of the CITY OF SAN DIEGO, COUNTY OF SAN DIEGO, CALIFORNIA, do hereby certify that the foregoing Assessment, together with the Assessment Diagram incorporated into this report, was approved and confirmed by the CITY COUNCIL of said City on the ____ day of _____, 2011.

Elizabeth Maland, CITY CLERK
CITY OF SAN DIEGO
STATE OF CALIFORNIA

I, _____, as CITY ENGINEER of the CITY OF SAN DIEGO, COUNTY OF SAN DIEGO, CALIFORNIA, do hereby certify that the foregoing Assessment, together with the Assessment Diagram was recorded in my office on the ____ day of _____, 2011.

Afshin Oskoui, CITY ENGINEER
CITY OF SAN DIEGO
STATE OF CALIFORNIA

EXHIBIT A



CAMPUS POINT

Maintenance Assessment District

EXHIBIT A

EXHIBIT B

EXHIBIT B

**Park and Recreation Department - Open Space Division
Maintenance Assessment Districts Program
Summary of Fiscal Year 2012 (07-01-11 to 06-30-12) Budget**

**Campus Point Maintenance Assessment District
SAP Fund 200031**

	FY 2010 Estimated Actuals	FY 2011 Estimate	FY 2012 Proposed
Full-Time Equivalent/Grounds Maintenance Manager	0.02	0.02	0.02
<u>District Personnel Costs</u>			
Total Labor & Fringe	\$ 1,735.00	\$ 1,735.00	\$ 2,071.00
<u>District Non-Personnel Costs</u>			
Contract Services			
Landscaping Services - Blue Skies Landscaping Contract Expires: 06/30/14 (512134)	\$ 9,587.21	\$ 12,288.00	\$ 12,780.00
Mulch Delivery - Blue Skies Landscaping (512134A)	\$ -	\$ 500.00	\$ 500.00
Tree Trimming (512197)	\$ -	\$ 10,000.00	\$ 5,000.00
Electrical Repair	\$ -	\$ 500.00	\$ 500.00
Other City Services	\$ 350.99	\$ 386.00	\$ 386.00
Supplies	\$ -	\$ 1,000.00	\$ 500.00
Special Districts Administration	\$ 2,587.00	\$ 3,500.00	\$ 3,500.00
Vehicle Usage & Assignment	\$ 190.00	\$ 200.00	\$ 210.00
Water / Storm Drain / Electrical	\$ 7,251.58	\$ 3,952.00	\$ 5,503.00
Subtotal Non-Personnel Costs	\$ 19,966.78	\$ 32,326.00	\$ 28,879.00
TOTAL	\$ 21,701.78	\$ 34,061.00	\$ 30,950.00
<u>District Revenues & Reserves</u>			
Special Assessments	\$ 24,782.85	\$ 24,769.00	\$ 24,475.80 ⁽¹⁾
Interest Earnings	\$ 209.72	\$ 115.00	\$ 78.00
City Contributions			
Environmental Growth Fund	\$ 1,128.00	\$ 1,292.00	\$ 2,000.00
TOTAL	\$ 26,120.57	\$ 26,176.00	\$ 26,553.80
<u>District Reserves</u>			
Beginning Fund Balance	\$ 13,288.00	\$ 17,707.00	\$ 9,822.00
Change in Fund Balance	\$ 4,419.00	\$ (7,885.00)	\$ (4,396.20)
Year End Operating Reserves	\$ 17,707.00	\$ 9,822.00	\$ 5,425.80

⁽¹⁾ Special assessment revenue adjusted to reflect latest parcel information.

EXHIBIT C

**ASSESSMENT ENGINEER'S REPORT
ASSESSMENT ROLL**

The undersigned, pursuant to the "Maintenance Assessment Districts Ordinance" (Division 2, Article 5, Chapter VI beginning at Section 65.0201 of the San Diego Municipal Code), the "Landscaping and Lighting Act of 1972" (Part 2, Division 15 of the California Streets and Highways Code), applicable provisions of "Proposition 218" (Article XIID of the California Constitution), and the "Proposition 218 Omnibus Implementation Act" (California Senate Bill 919) (the aforementioned provisions are hereinafter referred to collectively as "Assessment Law"), does hereby submit the following:

1. Pursuant to the provisions of Assessment Law and the Resolution of Intention, we have assessed the costs and expenses of the works of improvement (maintenance) to be performed in the Assessment District upon the parcels of land in the Assessment District in accordance with the approved apportionment methodology. For particulars as to the identification of said parcels, reference is made to the Assessment Diagram and Boundary Map on file in the Maintenance Assessment Districts section of the Park and Recreation Department of the City of San Diego. The District boundary is depicted in the Assessment Engineer's Report as Exhibit A.
2. The Assessment Diagram included in this report shows the Assessment District, as well as the boundaries and dimensions of the respective parcels and subdivisions of land within the Assessment District, the same as existed at the time of the passage of the Resolution of Intention, each of which subdivisions of land or parcels or lots respectively have been given a separate number upon the Assessment Diagram and in the Assessment Roll (Exhibit C).
3. By virtue of the authority contained in said Assessment Law, and by further direction and order of the legislative body, we hereby make the following assessment to cover the costs and expenses of the works of improvement (maintenance) for the Assessment District based on the costs and expenses as set forth in the Assessment Engineer's Report.

For particulars as to the individual assessments and their descriptions, reference is made to the Assessment Roll (Exhibit C) attached hereto.

DATED: June 2, 2011

EFS ENGINEERING, INC.



By: Eugene F. Shank
Eugene F. Shank, PE C 52792

By: Sharon F. Risse
Sharon F. Risse

EXHIBIT C - Assessment Roll (Fiscal Year 2012)
Campus Point Maintenance Assessment District

Parcel Number	Net Acres	Zone	Land Use	EDU Factor	Total EDUs	Unit Cost (\$/EDU)	FY 2012 ⁽¹⁾ Assessment	Owner Name
343 230 04 00	25.00	1	OSP	0.00	0.00	\$425.00	\$0.00	City Of San Diego
343 230 05 00	4.57	1	IND	1.00	4.57	\$425.00	\$1,942.26	Are-9880 Campus Point L L C
343 230 06 00	6.20	1	IND	1.00	6.20	\$425.00	\$2,635.00	City Of San Diego
343 230 11 00	4.50	1	IND	1.00	4.50	\$425.00	\$1,912.50	Scripps Health
343 230 12 00	8.96	1	IND	1.00	8.96	\$425.00	\$3,808.00	Qualcomm Inc
343 230 15 00	3.08	1	IND	1.00	3.08	\$425.00	\$1,309.00	Arden Realty Ltd Ptnshp
343 230 16 00	3.69	1	IND	1.00	3.69	\$425.00	\$1,568.26	Scripps Health
343 230 17 00	2.23	1	IND	1.00	2.23	\$425.00	\$947.76	Campus Point Realty Corp
343 230 38 00	4.13	1	IND	1.00	4.13	\$425.00	\$1,755.26	4110 Campus Point Court L L C
343 230 39 00	10.43	1	IND	1.00	10.43	\$425.00	\$4,432.76	Campus Point Realty Corp
343 230 40 00	3.24	1	IND	1.00	3.24	\$425.00	\$1,377.00	4224 Campus Point Court L L C
343 230 41 00	2.96	1	IND	1.00	2.96	\$425.00	\$1,258.00	Campus Point Realty Corp
343 230 42 00	3.60	1	IND	1.00	3.60	\$425.00	\$1,530.00	Campus Point Realty Corp
TOTAL	-	-	-	-	57.59	-	\$24,476	

⁽¹⁾ FY 2012 is the City's Fiscal Year 2012, which begins July 1, 2011 and ends June 30, 2012.