



America's Finest City

THE CITY OF SAN DIEGO



Assessment Engineer's Report

RANCHO ENCANTADA/STONEBRIDGE ESTATES MAINTENANCE ASSESSMENT DISTRICT

Annual Update for Fiscal Year 2013

under the provisions of the

**San Diego Maintenance Assessment District Ordinance
of the San Diego Municipal Code**

and

**Landscaping & Lighting Act of 1972
of the California Streets & Highways Code**

Prepared For

City of San Diego, California

Prepared By

EFS Engineering, Inc.

P.O. Box 22370

San Diego, CA 92192-2370

(858) 752-3490

June 2012

CITY OF SAN DIEGO

Mayor

Jerry Sanders

City Council Members

Sherrri Lightner
District 1

Carl DeMaio
District 5

Kevin Faulconer
District 2 (Council President Pro Tem)

Lorie Zapf
District 6

Todd Gloria
District 3

Marti Emerald
District 7

Anthony Young
District 4 (Council President)

David Alvarez
District 8

City Attorney

Jan Goldsmith

Chief Operating Officer

Jay Goldstone

City Clerk

Elizabeth Maland

Independent Budget Analyst

Andrea Tevlin

City Engineer

James Nagelvoort

Assessment Engineer

EFS Engineering, Inc.

Table of Contents

Assessment Engineer's Report
Rancho Encantada/Stonebridge Estates Maintenance Assessment District

Preamble	1
Executive Summary	2
Background.....	3
District Proceedings for Fiscal Year 2013	3
Bond Declaration	4
District Boundary	4
Project Description	4
Separation of General and Special Benefits	5
Cost Estimate	5
Estimated Costs.....	5
Annual Cost-Indexing.....	6
Method of Apportionment	6
Estimated Benefit of Improvements	6
Apportionment Methodology	7
Land Use Factor.....	7
Benefit Factor	9
Sample Calculations	11
Summary Results	12

EXHIBITS

Exhibit A: Boundary Map

Exhibit B: Estimated Annual Expense, Revenues & Reserves

Exhibit C: Assessment Roll

Assessment Engineer's Report Rancho Encantada/Stonebridge Estates Maintenance Assessment District

Preamble

Pursuant to the provisions of the "San Diego Maintenance Assessment District Ordinance" (being Division 2, Article 5, Chapter VI beginning at Section 65.0201 of the San Diego Municipal Code), provisions of the "Landscaping and Lighting Act of 1972" (being Part 2 of Division 15 of the California Streets and Highways Code), applicable provisions of "Proposition 218" (being Article XIID of the California Constitution), and provisions of the "Proposition 218 Omnibus Implementation Act" (being California Senate Bill 919) (the aforementioned provisions are hereinafter referred to collectively as "Assessment Law"), in connection with the proceedings for the RANCHO ENCANTADA/STONEBRIDGE ESTATES MAINTENANCE ASSESSMENT DISTRICT (hereinafter referred to as "District"), EFS ENGINEERING, INC., as Assessment Engineer to the City of San Diego for these proceedings, submits herewith this report for the District as required by California Streets and Highways Code Section 22565.

FINAL APPROVAL, BY RESOLUTION NO. _____,
ADOPTED BY THE CITY COUNCIL OF THE CITY OF SAN
DIEGO, COUNTY OF SAN DIEGO, CALIFORNIA, ON THE
_____ DAY OF _____, 2012.

Elizabeth Maland, CITY CLERK
CITY OF SAN DIEGO
STATE OF CALIFORNIA



Executive Summary

Project: Rancho Encantada/Stonebridge Estates
 Maintenance Assessment District

Apportionment Method: Equivalent Benefit Unit (EBU)

	FY 2012	FY 2013 ⁽¹⁾	Maximum ⁽²⁾ Authorized
Total Parcels Assessed:	1,019	1,019	--
Total Estimated Assessment:	\$0.00	\$0.00	--
Total Number of EBUs:	917.93	917.93	--
Assessment per EBU:	\$0.00	\$0.00	\$275.86 ⁽³⁾

⁽¹⁾ FY 2013 is the City's Fiscal Year 2013, which begins July 1, 2012 and ends June 30, 2013. Total Parcels Assessed, Total Estimated Assessment, and Total Number of EBUs may vary from prior fiscal year values due to parcel changes and/or land use re-classifications.

⁽²⁾ Maximum authorized annual amounts subject to cost-indexing provisions as set forth in this Assessment Engineer's Report.

⁽³⁾ Prior fiscal year's maximum authorized annual assessment increased by cost-indexing factor of 5.71%.

Annual Cost-Indexing: The maximum authorized assessment rate has been increased based on the approved annual cost-indexing provisions.

Bonds: No bonds will be issued in connection with this District.



Background

The Rancho Encantada-Stonebridge Estates Maintenance Assessment District (District) was approved by property owners and confirmed by City Council vote on December 6, 2005 (Resolution R-301141). The District's primary role is to maintain Rancho Encantada Park #2, which is now known as Sycamore Canyon Park. A finding of special benefit was made because the additional park acreage would be over and above the population-based park requirement for the Rancho Encantada community planning area per General Plan standards. The District's boundaries are defined primarily by developable land within the Rancho Encantada Precise Plan, which encompasses an estimated 2,700 acres and is bounded by the City of Poway to the north, Marine Corps Air Station Miramar to the south, the communities of Scripps-Miramar Ranch and Miramar Ranch North to the west, and Sycamore Canyon County Open Space to the east. The primary development within this area is Stonebridge Estates.

District Proceedings for Fiscal Year 2013

This District is authorized and administered under the provisions of the "San Diego Maintenance Assessment District Ordinance" (being Division 2, Article 5, Chapter VI beginning at Section 65.0201 of the San Diego Municipal Code), provisions of the "Landscaping and Lighting Act of 1972" (being Part 2 of Division 15 of the California Streets and Highways Code), applicable provisions of "Proposition 218" (being Article XIID of the California Constitution), and provisions of the "Proposition 218 Omnibus Implementation Act" (being California Senate Bill 919) (the aforementioned provisions are hereinafter referred to collectively as "Assessment Law"). This report has been prepared in compliance with Assessment Law.

The purpose of the proposed proceedings and this Assessment Engineer's Report is to update the District budget and assessments for Fiscal Year 2013. The Fiscal Year 2013 assessments proposed within this Assessment Engineer's Report are equal to or less than the maximum authorized assessment. Therefore, the vote requirements of Section 4 of Article XIID do not apply to these proceedings.



A public hearing will be scheduled where public testimony will be heard by the Council, and the Council may, at its discretion, adopt a resolution ordering the levying of the proposed assessments.

Bond Declaration

No bonds will be issued in connection with this District.

District Boundary

The boundary of the District coincides with the Rancho Encantada Precise Plan area. The Boundary Map and Assessment Diagram for the District are on file in the Maintenance Assessment Districts section of the Park and Recreation Department of the City of San Diego and by reference are made a part of this report. The Boundary Map and Assessment Diagram for the District are available for public inspection during normal business hours. A reduced copy of the Boundary Map is included as Exhibit A.

Project Description

The project to be funded by the proposed assessments is the maintenance of improvements associated with a six-acre park site referred to as "Sycamore Canyon Park" (see Figure 1). Identified park amenities include the following: tot lots, a full-size adult softball field, a little league ball field, a multi-purpose turf area, sports field light poles, security light poles, comfort stations, picnic tables, benches, drinking fountains, trash cans and container enclosures, parking stalls, fences, shrub areas, trees and brush management.

Maintenance activities include, but are not limited to, repair and/or replacement of permanent park fixtures (e.g., fences, sidewalks, ball fields, backstops, benches, bleachers, drinking fountains, sports field lights, parking lot, comfort station, tot lot, play equipment, etc.); litter control; fertilizing; irrigation and maintenance of irrigation components; weed control; pest control; pruning; planting; tree maintenance; gutter, sidewalk and hardtop cleaning; maintenance necessary for the health and appearance of the plant material; cleaning of brow ditches and activities necessary to address safety concerns. The District may also fund minor capital improvements to the extent such improvements are consistent with the apportionment



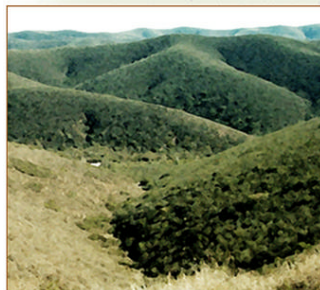


LEGEND

SYMBOL DESCRIPTION

- Canopy Trees such as:**
Jacaranda mimosifolia Jacaranda
Platanus racemosa California Sycamore
Rhus lancea African Sumac
Tipuana tipu Tipu Tree
- Accent Trees such as:**
Cercis occidentalis Western Redbud
- Edge Shrubs and Groundcover such as:**
Baccharis pilularis Dwarf Coyote Bush
Ceanothus spp. Wild Lilac
Heteromeles arbutifolia Toyon
Prunus ilicifolia Hollyleaf Cherry
Rhus integrifolia Lemonade Berry
Rosa californica California Wild Rose
- Street Side Shrubs and Groundcover such as:**
Bougainvillea 'Oo La La' Bougainvillea
Buddleja davidii Butterfly Bush
Cistus spp. Rockrose
Echium fastuosum Pride of Madeira
Limonium perezii Sea Lavender
Melaleuca nesophila Pink Melaleuca
Myoporum 'Pacificum' Myoporum
Raphiolepis indica Indian Hawthorn
Rosmarinus spp. Rosemary
- Turf - Hybrid Bermuda
- Infield
- Sand
- Rubberized Play Surface
- Playground Equipment
- Comfort Station
- Picnic Table - Standard
- Picnic Table - Accessible
- Bench
- Trash Receptacle
- Bike Rack
- Drinking Fountain
- Security Lighting (single)
- Security Lighting (double)
- Park Sign
- Trash Enclosure
- Drainage Structure in Turf
- Drainage Structure in Hardscape
- Existing Contour
- Proposed Contour
- Sports Field Lighting
- 4' Vinyl Coated Chain Link Fence

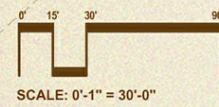
Notes:
 - Jacarandas shall not be placed over hardscape elements and are to be used only as accent trees in landscape areas.
 - Future storage container shall be placed in location designated on plan.



General Development Plan for Sycamore Canyon Park

STONEBRIDGE Estates

As of July 21, 2005



methodology.

The engineering drawings for the improvements to be maintained by the District are on file at Map and Records in the Development Services Department. The improvements and services provided by the District will be maintained in accordance with specifications and contracts on file with the Park and Recreation Department. These documents are available for public inspection during normal business hours.

Separation of General and Special Benefits

The proceeds from the assessment will be used to fund enhanced improvements, services and activities within the District that, in absence of the assessment, otherwise would not be provided at an enhanced level or frequency of service. The District will continue to receive the same level of general services provided to the public at large under City-funded and administered programs, as determined annually, for maintenance of public facilities and improvements (e.g., street trees, sidewalks, street lights, etc.), including street sweeping and graffiti removal on public property.

The City operates and maintains population-based parks as a “general benefit” provided to the public at large. Sycamore Canyon Park (proposed for maintenance) is over and above the population-based park requirement. The park, including its continued maintenance and upkeep, confers “special benefit” to the properties within the District by providing greater recreational opportunities to District residents and an aesthetic buffer within the subdivision. Incidental use and enjoyment of the park by others outside the District is estimated to be minor given that most of the neighboring communities have similar supplemental park facilities.

Cost Estimate

Estimated Costs

Estimated Fiscal Year 2013 annual expenses, revenues, reserves, and assessments (provided by the City) are included as Exhibit B hereto. Though not currently identified or quantified, fees collected for organized athletic activities and/or events at Sycamore Canyon Park`



may be allocated to the District fund to offset incidental use or maintenance attributable to others outside the District.

Annual Cost-Indexing

With the passage of Proposition 218, any proposed increase in assessments must be placed for approval before the property owners by a mail ballot and a public hearing process, similar to these proceedings. A majority of ballots received must be affirmative for the City Council to confirm and levy the increased assessments. For small assessment districts or districts with relatively low dollar assessments, the cost of an engineer's report, balloting, and the public hearing process can potentially exceed the total cost of the increase. These incidental costs of the proceedings can be added to the assessments, resulting in even higher assessments.

Indexing assessments annually to the San Diego Consumer Price Index for Urban Consumers (SDCPI-U) plus 3%, as approved by the District property owners in Fiscal Year 2007, allows for minor increases for normal maintenance and operating cost escalation without incurring the costs of the Proposition 218 ballot proceedings. Any significant change in the assessment initiated by an increase in service provided or other significant changes to the District would still require the Proposition 218 proceedings and property owner approval.

The maximum authorized assessment established in the Fiscal Year 2007 proceedings are authorized to be indexed (increased or decreased) annually by the factor published in the SDCPI-U plus 3%. The annual change in second half SDCPI-U values, as compiled by the U.S. Bureau of Labor Statistics (see www.bls.gov), for the prior year period was from 246.686 to 253.368 (a 2.71% increase). In accordance with the approved cost-indexing provisions, the maximum authorized assessment rates contained within this Assessment Engineer's Report have been increased by 5.71%.

Method of Apportionment

Estimated Benefit of Improvements

Properties located within the District benefit from maintenance of Sycamore Canyon Park. As a dedicated public amenity over and above the population-based park requirement, the park facilitates greater



recreational opportunities to District residents and creates an aesthetic buffer within the subdivision. The presence of the park adds to the desirability and marketability of properties within the District, and further distinguishes the community from others in the City. These are the special benefits conferred upon each property within the District.

The Public Facilities and Services element of the Rancho Encantada Precise Plan and the general policy recommendations found in the City's General Plan establish several goals and guidelines for the planned development of the community. The proposed improvements are consistent with these goals. The City's General Plan and the Rancho Encantada Precise Plan support the establishment of community-based landscape improvement and maintenance districts, such as this District, to fund maintenance of enhanced improvements and services.

Apportionment Methodology

The total cost of maintenance of District improvements will be assessed to the various parcels in the District in proportion to the estimated Equivalent Benefit Units (EBUs) assigned to a parcel in relationship to the total EBUs of all the parcels in the District.

EBUs for each parcel have been determined as a function of two factors – a Land Use Factor and a Benefit Factor – related as shown in the following equation:

$\text{EBUs} = (\text{Acres or Units}) \times \text{Land Use Factor} \times \text{Benefit Factor}$
--

Each of these factors is discussed below. Parcels determined to receive no benefit from the District improvements have been assigned zero EBUs.

Land Use Factor

The identified District improvements are associated with the Public Facilities and Services element of Rancho Encantada Precise Plan and the Recreation element of the City's General Plan. Trip generation rates (as previously established by the City's Transportation Planning Section) have been used as the primary basis for assignment of relative benefit between the various land



uses within the District. While these trip generation rates address vehicular trips, they are also considered to approximately reflect the magnitude of other modes of transportation (e.g., pedestrian trips, bicycle trips, etc.), and corresponding intensity of use of public recreational facilities.

Trip generation rates provide the required nexus and basis for assigning relative proportionality of potential benefit to the various land use/zoning classifications (as defined by the City's Municipal Code) within the District. Land use/zoning classifications have been grouped with averaged trip generation rates assigned to establish the Land Use Factors as shown in Table 1.

TABLE 1: Land Use Factors

Land Use/Zoning	Code	Land Use Factor ⁽¹⁾
Residential – Detached Single Family	SFD	1.0 per dwelling unit
Residential – Condominium	CND	0.7 per dwelling unit
Residential – Multi-Family & Apartment	MFR	0.7 per dwelling unit
Commercial – Office & Retail	COM	45.0 per acre
Educational – Primary & Secondary	EPS	5.0 per acre
House of Worship	CRH	2.8 per acre
Open Space (designated)	OSP	0 per acre
Park – Undeveloped	PKU	0.5 per acre
Street/Roadway	STR	0 per acre
Undevelopable	UND	0 per acre
Utility Facility	UTL	3.0 per acre

⁽¹⁾ Proportional to trip generation rates contained in the City of San Diego *Trip Generation Manual* dated May 2003.

Designated Open Space serves primarily to preserve natural landscape and habitat. While access for study and passive recreation is often permitted, these activities are allowed only to the extent they are consistent with the primary purpose of natural preservation. Since this land is essentially “unused” in the customary terms of land use (which relate to human use and development), the trip generation rate is zero. Therefore, the designated Open Space itself receives no benefit from the District improvements and has been assigned a Land Use Factor of zero.

While those traveling the streets and roadways visually enjoy the



enhanced improvements being maintained by the District, the actual benefit accrues to the lands at the origins and destinations of their trips, not to the lands of the streets and roadways, themselves. Accordingly, the Streets/Roadways category receives no benefit and has been assigned a Land Use Factor of zero.

The Utility Facility category applies to utility infrastructure facilities, such as water tanks, pump stations, electric power transformer stations, communications facilities, etc. Utility company administrative offices are not included in this category.

Benefit Factor

The Land Use Factor described above establishes a proportionality of relative intensity of use (or potential use) for the various parcels of land within the District. It does not address the relationship of this use to the specific improvements to be maintained by the District. This relationship is reflected in the Benefit Factor utilized in the assessment methodology.

In determining the Benefit Factor for each land use category, the subcomponents of the benefits of District improvements may include some or all of the following: recreation, aesthetics, public safety, view corridors, commercial identity, and drainage. The components used for this District are: recreation and aesthetics.

As Benefit Factors and their subcomponents are intended to reflect the particular relationships between specific land uses within a district and the specific improvements maintained by the district, Benefit Factors will generally vary from one district to another, based on the specific character and nature of the applicable land uses and improvements being maintained.

For a given land use, the overall Benefit Factor is equal to the sum of the subcomponent values. If a land use category receives no benefit from a subcomponent, then a value of zero is assigned to that subcomponent. A composite Benefit Factor of 1.0 indicates that full benefit is received. A value less than 1.0 indicates that less than full benefit is received.

The applicable benefit subcomponents and resultant composite Benefit Factors determined for the various Land Use/Zoning



categories within this District are as shown in Table 2.

TABLE 2: Benefit Factors by Land Use

Land Use/Zoning	Recreation (Max. 0.8)	Aesthetics (Max. 0.2)	Benefit Factor (Max. 1.0)
Residential – All	0.8	0.2	1.0
Commercial – Office & Retail	0.2	0.2	0.4
Educational – Primary & Secondary	0.2	0.1	0.3
House of Worship	0.2	0.1	0.3
Open Space (designated)	0.0	0.0	0.0
Park – Undeveloped	0.0	0.1	0.1
Street/Roadway	0.0	0.0	0.0
Undevelopable	0.0	0.0	0.0
Utility Facility	0.0	0.1	0.1

Recreation. The degree of recreational benefit received from the District improvements varies among land use categories. Clearly, Residential lands receive the greatest benefit from the additional recreational amenities potential. Lands in the Commercial, Educational and House of Worship categories receive a lesser degree of recreational benefit from fairly limited use of such facilities. Lands in the Open Space, Parks, Street/Roadway, Undevelopable and Utility Facility categories are considered to receive no significant benefit from the recreational aspects of the District improvements, as such enhancements do not affect their function, use, or value.

Aesthetics. The degree of benefit received from the aesthetic aspect of the District improvements also varies among land use categories. Generally, by nature of their use, Residential and Commercial lands receive the greatest benefit from aesthetic enhancement projects. Lands in the Educational, House of Worship, Open Space, Parks, Street/Roadway, Undevelopable and Utility Facility categories are considered to receive less significant benefit from the aesthetic aspects of the District improvements, as such enhancements do not affect their function, use, or value.



Sample Calculations

As described above, the number of Equivalent Benefit Units (EBUs) assigned to each parcel in the District has been calculated based on each parcel's land use and the identified apportionment factors, as shown in the following equation:

$\text{EBUs} = (\text{Acres or Units}) \times \text{Land Use Factor} \times \text{Benefit Factor}$
--

Shown below are sample EBU calculations for several common land uses found in the District.

- **1 Single-Family Residence**
EBUs = 1 unit x 1.00 x 1.00 = 1.00 EBUs
- **10-unit Apartment Complex**
EBUs = 10 units x 0.70 x 1.00 = 7.00 EBUs
- **2-acre Elementary School**
EBUs = 2.00 acres x 5.00 x 0.20 = 2.00 EBUs
- **5-acre Park without Recreation Center**
EBUs = 5.00 acres x 0.50 x 0.10 = 0.25 EBUs

The total assessment for each parcel in the District is based on the calculated EBUs for the parcel and the applicable unit assessment rate, as shown in the following equation:

$\text{Total Assessment} = \text{Total EBUs} \times \text{Unit Assessment Rate}$
--

Based on the above formula, the EBUs calculated for each property, can be found in the Assessment Roll (Exhibit C).



Summary Results

The District Boundary is presented in Exhibit A.

An estimate of the costs of the improvements provided by the District is included as Exhibit B to this report.

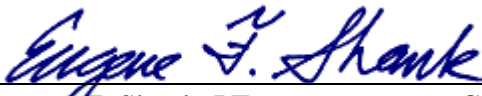
The assessment methodology utilized is as described in the text of this report. Based on this methodology, the EBUs and Fiscal Year 2013 District assessment for each parcel were calculated and are shown in the Assessment Roll (Exhibit C).

Each lot or parcel of land within the District has been identified by unique County Assessor's Parcel Number on the Assessment Roll and the Boundary Map and Assessment Diagram referenced herein. The net assessment for each parcel for Fiscal Year 2013 can be found on the Assessment Roll.

This report has been prepared and respectfully submitted by:

EFS ENGINEERING, INC.




Eugene F. Shank, PE C 52792


Sharon F. Risse



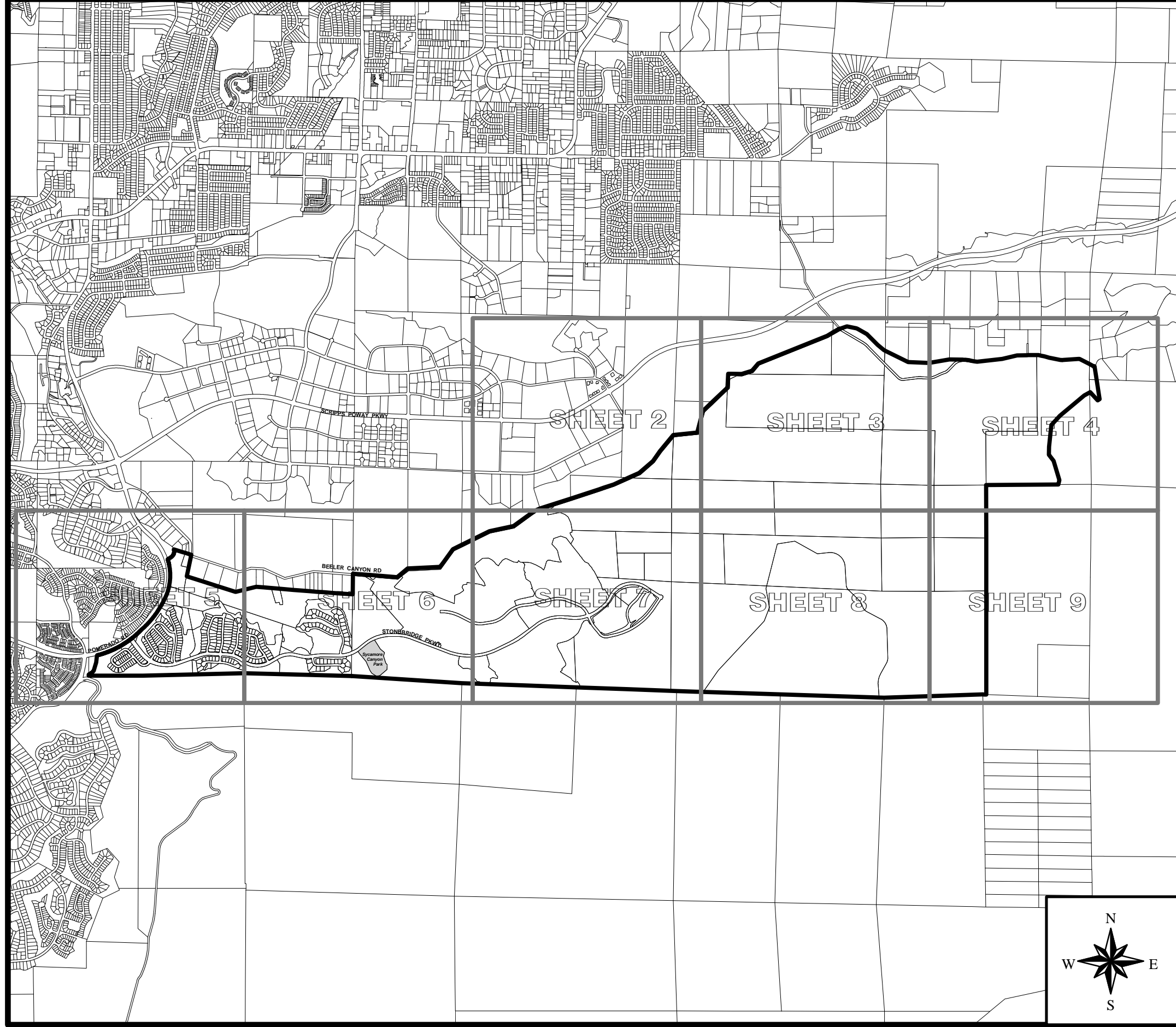
I, _____, as CITY CLERK of the CITY OF SAN DIEGO, COUNTY OF SAN DIEGO, CALIFORNIA, do hereby certify that the Assessment as shown on the Assessment Roll, together with the Assessment Diagram, both of which are incorporated into this report, were filed in my office on the ____ day of _____, 2012.

Elizabeth Maland, CITY CLERK
CITY OF SAN DIEGO
STATE OF CALIFORNIA

I, _____, as CITY CLERK of the CITY OF SAN DIEGO, COUNTY OF SAN DIEGO, CALIFORNIA, do hereby certify that the foregoing Assessment, together with the Assessment Diagram incorporated into this report, was approved and confirmed by the CITY COUNCIL of said City on the ____ day of _____, 2012.

Elizabeth Maland, CITY CLERK
CITY OF SAN DIEGO
STATE OF CALIFORNIA

EXHIBIT A



SOURCE: SanGIS, City of San Diego, SANDAG, and Boyle Engineering Corporation.

BOUNDARY MAP

FILED IN THE OFFICE OF THE CITY CLERK OF THE CITY OF SAN DIEGO, STATE OF CALIFORNIA, THIS ____ DAY OF _____, 2005.

I HEREBY CERTIFY THAT THE WITHIN MAP SHOWING PROPOSED BOUNDARIES OF THE RANCHO ENCANTADA/STONEBRIDGE ESTATES MAINTENANCE ASSESSMENT DISTRICT, CITY OF SAN DIEGO, STATE OF CALIFORNIA, WAS APPROVED BY THE CITY COUNCIL AT A REGULAR MEETING THEREOF, HELD ON THE ____ DAY OF _____, 2005, BY ITS RESOLUTION NO. _____.

LIZ MALAND, CITY CLERK
CITY OF SAN DIEGO
STATE OF CALIFORNIA

LIZ MALAND, CITY CLERK
CITY OF SAN DIEGO
STATE OF CALIFORNIA

PREPARED BY:
BOYLE ENGINEERING CORPORATION
7807 Conroy Court, Suite 200, San Diego, California 92111 (619) 268-8080

AN ASSESSMENT WAS LEVIED BY THE CITY COUNCIL OF THE CITY OF SAN DIEGO ON THE LOTS, PIECES, AND PARCELS OF LAND SHOWN ON THIS ASSESSMENT DIAGRAM. SAID ASSESSMENT WAS LEVIED ON THE ____ DAY OF _____, 2005. SAID ASSESSMENT DIAGRAM AND THE ASSESSMENT ROLL WERE RECORDED IN THE OFFICE OF THE SUPERINTENDENT OF STREETS OF THE CITY OF SAN DIEGO, STATE OF CALIFORNIA ON THE ____ DAY OF _____, 2005. REFERENCE IS MADE TO THE ASSESSMENT ROLL RECORDED IN THE OFFICE OF THE SUPERINTENDENT OF STREETS FOR THE EXACT AMOUNT OF EACH ASSESSMENT LEVIED AGAINST EACH PARCEL OF LAND SHOWN ON THIS ASSESSMENT DIAGRAM.

NOTE:
FOR A DETAILED DESCRIPTION OF THE LINES AND DIMENSIONS OF LOTS OR PARCELS SHOWN ON THIS MAP, REFER TO THE COUNTY ASSESSOR'S MAPS WHICH SHALL GOVERN WITH RESPECT TO ALL DETAILS CONCERNING THE LINES AND DIMENSIONS OF SUCH LOTS OR PARCELS.

LEGEND:
 District Boundary
 Parcel Line
 Improvement Areas *

* REFER TO THE ENGINEER'S REPORT AND REFERENCED DOCUMENTS FOR DESCRIPTION OF IMPROVEMENTS AND SERVICES.



CITY OF
SAN DIEGO

RANCHO ENCANTADA/STONEBRIDGE ESTATES
MAINTENANCE ASSESSMENT DISTRICT

W.O.

DATE: AUG 2005

REVS:

EXHIBIT B

EXHIBIT B

**Park and Recreation Department - Open Space Division
Maintenance Assessment Districts Program
Summary of Fiscal Year 2013 (07-01-12 to 06-30-13) Proposed Budget**

**Rancho Encantada/Stonebridge Estates
SAP Fund 200101**

	FY 2011 Est. Actuals	FY 2012 Estimate	FY 2013 Proposed
Full-Time Equivalent/Grounds Maintenance Manager (Contract Administrator)	0.00	0.00	0.00
<u>District Personnel Costs</u>			
Total Labor & Fringe	\$ -	\$ -	\$ 7,765.00 ⁽¹⁾
<u>District Non-Personnel Costs</u>			
Supplies	\$ -	\$ -	\$ 2,750.00
Services			
Misc. Contract - Pest Control	\$ -	\$ -	\$ 1,000.00
Landscape Services Contract	\$ -	\$ -	\$ 30,125.00
Special Districts Administration	\$ 3,500.00	\$ 3,500.00	\$ 3,500.00
Vehicle Usage and Assignment	\$ -	\$ -	\$ -
Water / Sewer/Storm Drain / Electrical	\$ -	\$ -	\$ -
Subtotal Non-Personnel Costs	\$ 3,500.00	\$ 3,500.00	\$ 37,375.00
TOTAL	\$ 3,500.00	\$ 3,500.00	\$ 45,140.00
<u>District Revenues & Reserves</u>			
Special Assessments	\$ 204.36	\$ -	\$ -
Interest Earnings	\$ 4,365.21	\$ 4,370.00	\$ 3,630.00
Miscellaneous Revenue	\$ -	\$ -	\$ -
TOTAL	\$ 4,569.57	\$ 4,370.00	\$ 3,630.00
<u>District Reserves</u>			
Beginning Fund Balance	\$ 370,326.29	\$ 371,395.86	\$ 372,265.86
Change in Fund Balance	\$ 1,069.57	\$ 870.00	\$ (41,510.00)
Year End Operating Reserves	\$ 371,395.86	\$ 372,265.86	\$ 330,755.86

⁽¹⁾ Based on 6 months of Labor and Fringe for .15 FTE GMM (6 hours per week).

⁽²⁾ Special assessments suspended.

⁽¹⁾ Based on 6 months of Labor and Fringe for .15 FTE GMM (6 hours per week).

⁽²⁾ Special assessment suspended.

EXHIBIT C

**ASSESSMENT ENGINEER'S REPORT
ASSESSMENT ROLL**

The undersigned, pursuant to the "Maintenance Assessment Districts Ordinance" (Division 2, Article 5, Chapter VI beginning at Section 65.0201 of the San Diego Municipal Code), the "Landscaping and Lighting Act of 1972" (Part 2, Division 15 of the California Streets and Highways Code), applicable provisions of "Proposition 218" (Article XIID of the California Constitution), and the "Proposition 218 Omnibus Implementation Act" (California Senate Bill 919) (the aforementioned provisions are hereinafter referred to collectively as "Assessment Law"), does hereby submit the following:

1. Pursuant to the provisions of Assessment Law and the Resolution of Intention, we have assessed the costs and expenses of the works of improvement (maintenance) to be performed in the Assessment District upon the parcels of land in the Assessment District benefited thereby in direct proportion and relation to the estimated benefits to be received by each of said parcels. For particulars as to the identification of said parcels, reference is made to the Boundary Map & Assessment Diagram on file in the Maintenance Assessment Districts Section of the Park and Recreation Department of the City of San Diego. A copy of the Boundary Map is included in the Assessment Engineer's Report as Exhibit A.
2. The Assessment Diagram included in this report shows the Assessment District, as well as the boundaries and dimensions of the respective parcels and subdivisions of land within the Assessment District, the same as existed at the time of the passage of the Resolution of Intention, each of which subdivisions of land or parcels or lots respectively have been given a separate number upon the Assessment Diagram and in the Assessment Roll (Exhibit C).
3. By virtue of the authority contained in said Assessment Law, and by further direction and order of the legislative body, we hereby make the following assessment to cover the costs and expenses of the works of improvement (maintenance) for the Assessment District based on the costs and expenses as set forth in the Assessment Engineer's Report.

For particulars as to the individual assessments and their descriptions, reference is made to the Assessment Roll (Exhibit C) attached hereto.

DATED: June 1, 2012 EFS ENGINEERING, INC.



By: Eugene F. Shank
Eugene F. Shank, PE C 52792

By: Sharon F. Risse
Sharon F. Risse

EXHIBIT C - Assessment Roll (Fiscal Year 2013)
Rancho Encantada/Stonebridge Estates Maintenance Assessment District

Parcel Number	Acres/ Units ⁽¹⁾	Land Use ⁽²⁾	Assessment Factors		Total EBU's	Unit Cost (\$/EBU)	FY 2013 ⁽⁴⁾ Assessment	Owner Name
			Land Use ⁽²⁾	Benefit ⁽³⁾				
320 010 61 00	1.11	OSP	0.00	0.00	0.00	\$0.00	\$0.00	Stonebridge Estates Master Assn
320 010 62 00	7.82	OSP	0.00	0.00	0.00	\$0.00	\$0.00	Stonebridge Estates Master Assn
320 010 63 00	10.51	OSP	0.00	0.00	0.00	\$0.00	\$0.00	Stonebridge Estates Master Assn
320 030 45 00	1.74	OSP	0.00	0.00	0.00	\$0.00	\$0.00	Jin Zhu Trust 03-20-97
320 030 51 00	48.75	OSP	0.00	0.00	0.00	\$0.00	\$0.00	Zhu Jin Trust 03-20-97
320 030 54 00	8.34	OSP	0.00	0.00	0.00	\$0.00	\$0.00	Stonebridge Estates Master Assn
320 030 55 00	11.74	OSP	0.00	0.00	0.00	\$0.00	\$0.00	Stonebridge Estates Master Assn
320 030 57 00	10.34	OSP	0.00	0.00	0.00	\$0.00	\$0.00	Stonebridge Estates Master Assn
320 030 58 00	0.94	OSP	0.00	0.00	0.00	\$0.00	\$0.00	Stonebridge Estates Master Assn
320 030 59 00	0.05	OSP	0.00	0.00	0.00	\$0.00	\$0.00	Stonebridge Estates Master Assn
320 030 60 00	5.35	OSP	0.00	0.00	0.00	\$0.00	\$0.00	Brookfield 8 L L C
320 250 01 00	1.00	SFD	1.00	1.00	1.00	\$0.00	\$0.00	Schuck Family Trust 01-22-09
320 250 02 00	1.00	SFD	1.00	1.00	1.00	\$0.00	\$0.00	Nguyen Do P&Vu Thanh Huyen
320 250 03 00	1.00	SFD	1.00	1.00	1.00	\$0.00	\$0.00	Noyes Steven M&Ying X
320 250 04 00	1.00	SFD	1.00	1.00	1.00	\$0.00	\$0.00	Carson Lisa A
320 250 05 00	1.00	SFD	1.00	1.00	1.00	\$0.00	\$0.00	Rogers Benjamin F&Margaret L
320 250 06 00	1.00	SFD	1.00	1.00	1.00	\$0.00	\$0.00	Bank Of America
320 250 07 00	1.00	SFD	1.00	1.00	1.00	\$0.00	\$0.00	Gouslin Family Trust 03-29-06
320 250 08 00	1.00	SFD	1.00	1.00	1.00	\$0.00	\$0.00	Kottillingal Sudeep R&Sudeep Chandni
320 250 09 00	1.00	SFD	1.00	1.00	1.00	\$0.00	\$0.00	Phan Vincent Hoang&Lam Amber Thu-My
320 250 10 00	1.00	SFD	1.00	1.00	1.00	\$0.00	\$0.00	Rittinger Gary H&Diana A
320 250 11 00	1.00	SFD	1.00	1.00	1.00	\$0.00	\$0.00	Croissant-Payne Family Trust 11-30-07
320 250 12 00	1.00	SFD	1.00	1.00	1.00	\$0.00	\$0.00	Hicks Douglas
320 250 13 00	1.00	SFD	1.00	1.00	1.00	\$0.00	\$0.00	Naucler Bradley J
320 250 14 00	1.00	SFD	1.00	1.00	1.00	\$0.00	\$0.00	Woods Sonya L
320 250 15 00	1.00	SFD	1.00	1.00	1.00	\$0.00	\$0.00	Shina Family Trust 01-08-09
320 250 16 00	1.00	SFD	1.00	1.00	1.00	\$0.00	\$0.00	Patwardhan Family Trust 04-13-09
320 250 17 00	1.00	SFD	1.00	1.00	1.00	\$0.00	\$0.00	Zawaideh Fahed I&Haddad Nisreen J
320 250 18 00	1.00	SFD	1.00	1.00	1.00	\$0.00	\$0.00	Hernandez Family Trust 03-13-09
320 250 19 00	1.00	SFD	1.00	1.00	1.00	\$0.00	\$0.00	Oh Euisik&Sun K
320 250 20 00	1.00	SFD	1.00	1.00	1.00	\$0.00	\$0.00	Anquillano Family Trust 04-26-91
320 250 21 00	1.00	SFD	1.00	1.00	1.00	\$0.00	\$0.00	Kirovski Tommy
320 250 22 00	1.00	SFD	1.00	1.00	1.00	\$0.00	\$0.00	Jaggers Joseph&Monteze
320 250 23 00	1.00	SFD	1.00	1.00	1.00	\$0.00	\$0.00	Feider Family Trust 10-16-06
320 250 24 00	1.00	SFD	1.00	1.00	1.00	\$0.00	\$0.00	Yang Zixiang&Liu Yi
320 250 25 00	1.00	SFD	1.00	1.00	1.00	\$0.00	\$0.00	Williams Frederick S&Margaret C
320 250 26 00	1.00	SFD	1.00	1.00	1.00	\$0.00	\$0.00	Lee Ned&Sylvia
320 250 27 00	1.00	SFD	1.00	1.00	1.00	\$0.00	\$0.00	Danzer Family Trust 11-24-04
320 250 28 00	1.00	SFD	1.00	1.00	1.00	\$0.00	\$0.00	Shantz David P&Lisa C
320 250 29 00	1.00	SFD	1.00	1.00	1.00	\$0.00	\$0.00	Simpauco Rodelio P&Joyce M
320 250 30 00	1.00	SFD	1.00	1.00	1.00	\$0.00	\$0.00	Burgess Brenda M
320 250 31 00	1.00	SFD	1.00	1.00	1.00	\$0.00	\$0.00	Hong Jae Bum&Cha Seung Sin
320 250 32 00	1.00	SFD	1.00	1.00	1.00	\$0.00	\$0.00	Jacobsen Gregory A&Lisa M
320 250 33 00	1.00	SFD	1.00	1.00	1.00	\$0.00	\$0.00	Tran Emmamarrie
320 250 34 00	1.00	SFD	1.00	1.00	1.00	\$0.00	\$0.00	Kale Jimmy A&Dawn M
320 250 35 00	1.00	SFD	1.00	1.00	1.00	\$0.00	\$0.00	Alfonso Robert S&Cindy V
320 250 36 00	16.27	OSP	0.00	0.00	0.00	\$0.00	\$0.00	Stonebridge Estates Master Assn
320 250 37 00	0.05	OSP	0.00	0.00	0.00	\$0.00	\$0.00	Stonebridge Estates Master Assn
320 250 38 00	0.04	OSP	0.00	0.00	0.00	\$0.00	\$0.00	Stonebridge Estates Master Assn
320 250 39 00	0.05	OSP	0.00	0.00	0.00	\$0.00	\$0.00	Stonebridge Estates Master Assn
320 250 40 00	0.05	OSP	0.00	0.00	0.00	\$0.00	\$0.00	Stonebridge Estates Master Assn
320 250 41 00	0.04	OSP	0.00	0.00	0.00	\$0.00	\$0.00	Stonebridge Estates Master Assn

EXHIBIT C - Assessment Roll (Fiscal Year 2013)
Rancho Encantada/Stonebridge Estates Maintenance Assessment District

Parcel Number	Acres/ Units ⁽¹⁾	Land Use ⁽²⁾	Assessment Factors		Total EBU's	Unit Cost (\$/EBU)	FY 2013 ⁽⁴⁾ Assessment	Owner Name
			Land Use ⁽²⁾	Benefit ⁽³⁾				
320 250 42 00	0.77	OSP	0.00	0.00	0.00	\$0.00	\$0.00	Stonebridge Estates Master Assn
320 251 01 00	1.00	SFD	1.00	1.00	1.00	\$0.00	\$0.00	Farhoud Jamal&Nahid
320 251 02 00	1.00	SFD	1.00	1.00	1.00	\$0.00	\$0.00	Jung Changho&Yoomee Kang
320 251 03 00	1.00	SFD	1.00	1.00	1.00	\$0.00	\$0.00	Ahmed Hany E&Ghada
320 251 04 00	1.00	SFD	1.00	1.00	1.00	\$0.00	\$0.00	Tran Christine
320 251 05 00	1.00	SFD	1.00	1.00	1.00	\$0.00	\$0.00	Ricasata Family Trust 05-18-04
320 251 06 00	1.00	SFD	1.00	1.00	1.00	\$0.00	\$0.00	Dittamore Ryan V&Amy L
320 251 07 00	1.00	SFD	1.00	1.00	1.00	\$0.00	\$0.00	Harina Francisco S&Elenita V
320 251 08 00	1.00	SFD	1.00	1.00	1.00	\$0.00	\$0.00	Abolmaali-Zarei Living Trust 04-21-06
320 251 09 00	1.00	SFD	1.00	1.00	1.00	\$0.00	\$0.00	Hasen Adam M&Dunia S
320 251 10 00	1.00	SFD	1.00	1.00	1.00	\$0.00	\$0.00	Zabaco Jorge&Valentina
320 251 11 00	1.00	SFD	1.00	1.00	1.00	\$0.00	\$0.00	Soltani Ali
320 251 12 00	1.00	SFD	1.00	1.00	1.00	\$0.00	\$0.00	Vij Gajinder&Sukhvinder
320 251 13 00	1.00	SFD	1.00	1.00	1.00	\$0.00	\$0.00	Rickenbrode John G&Convery Karen D
320 251 14 00	1.00	SFD	1.00	1.00	1.00	\$0.00	\$0.00	Solomennaya Maria
320 251 15 00	1.00	SFD	1.00	1.00	1.00	\$0.00	\$0.00	Ortmertl Karl
320 251 16 00	1.00	SFD	1.00	1.00	1.00	\$0.00	\$0.00	Shirazi Mehrdad&Mojdeh
320 251 17 00	1.00	SFD	1.00	1.00	1.00	\$0.00	\$0.00	Lee Daniel K&Cassie K
320 251 18 00	1.00	SFD	1.00	1.00	1.00	\$0.00	\$0.00	Bermal Mark V
320 251 19 00	1.00	SFD	1.00	1.00	1.00	\$0.00	\$0.00	Fragiskatos Christopher M
320 251 20 00	1.00	SFD	1.00	1.00	1.00	\$0.00	\$0.00	Do Michael&Julie
320 251 21 00	1.00	SFD	1.00	1.00	1.00	\$0.00	\$0.00	Truong Bao Ngoc&Janelle H
320 251 22 00	1.00	SFD	1.00	1.00	1.00	\$0.00	\$0.00	Mellos Family Trust 05-20-04
320 251 23 00	1.00	SFD	1.00	1.00	1.00	\$0.00	\$0.00	Campos Fernando O&Brette K
320 251 24 00	1.00	SFD	1.00	1.00	1.00	\$0.00	\$0.00	Mcdaniel Lecharls B&Sheryl L
320 251 25 00	1.00	SFD	1.00	1.00	1.00	\$0.00	\$0.00	Lopez Francisco M&Nunezdelprado Luz B
320 251 26 00	1.00	SFD	1.00	1.00	1.00	\$0.00	\$0.00	Liu Stanley Yueh-Wei&Jeannette J
320 251 27 00	1.00	SFD	1.00	1.00	1.00	\$0.00	\$0.00	Weng Family Trust 06-11-08
320 251 28 00	1.00	SFD	1.00	1.00	1.00	\$0.00	\$0.00	Schulte Family Trust 12-19-97
320 251 29 00	1.00	SFD	1.00	1.00	1.00	\$0.00	\$0.00	Miu Sally
320 251 30 00	1.00	SFD	1.00	1.00	1.00	\$0.00	\$0.00	Azucena Efen D&Catalina C
320 251 31 00	1.00	SFD	1.00	1.00	1.00	\$0.00	\$0.00	Hsu Christopher Hau-Chen&Wendy
320 251 32 00	1.00	SFD	1.00	1.00	1.00	\$0.00	\$0.00	Carolino Ricky&Shirley C
320 251 33 00	1.00	SFD	1.00	1.00	1.00	\$0.00	\$0.00	Sarwary Masud A
320 251 34 00	1.00	SFD	1.00	1.00	1.00	\$0.00	\$0.00	Boylan Daniel J&Jane E
320 251 35 00	1.00	SFD	1.00	1.00	1.00	\$0.00	\$0.00	Truong Hung&Nguyen Aithuy Truong
320 251 36 00	1.00	SFD	1.00	1.00	1.00	\$0.00	\$0.00	Saad Walid&Arlene E J
320 251 37 00	1.00	SFD	1.00	1.00	1.00	\$0.00	\$0.00	Le Phuong T&Lim Alicia
320 251 38 00	1.00	SFD	1.00	1.00	1.00	\$0.00	\$0.00	Tripathi Manish&Vishnoi Shveta
320 251 39 00	1.00	SFD	1.00	1.00	1.00	\$0.00	\$0.00	Tice Elizabeth
320 251 40 00	1.00	SFD	1.00	1.00	1.00	\$0.00	\$0.00	Zalavadiya Rajeshbhai&Archana B
320 251 41 00	1.00	SFD	1.00	1.00	1.00	\$0.00	\$0.00	Jimenez Hermilina P
320 251 42 00	0.06	OSP	0.00	0.00	0.00	\$0.00	\$0.00	Stonebridge Estates Master Assn
320 251 43 00	0.20	OSP	0.00	0.00	0.00	\$0.00	\$0.00	Stonebridge Estates Master Assn
320 251 44 00	0.02	OSP	0.00	0.00	0.00	\$0.00	\$0.00	Stonebridge Estates Master Assn
320 251 45 00	0.14	OSP	0.00	0.00	0.00	\$0.00	\$0.00	Stonebridge Estates Master Assn
320 252 01 00	1.00	SFD	1.00	1.00	1.00	\$0.00	\$0.00	Pugeda Family Trust 01-02-06
320 252 02 00	1.00	SFD	1.00	1.00	1.00	\$0.00	\$0.00	Vuong Tan Ngoc&Anh Revocable Trust 06-26-05
320 252 03 00	1.00	SFD	1.00	1.00	1.00	\$0.00	\$0.00	Advani Family Trust 03-18-98
320 252 04 00	1.00	SFD	1.00	1.00	1.00	\$0.00	\$0.00	Hsu Calvin
320 252 05 00	1.00	SFD	1.00	1.00	1.00	\$0.00	\$0.00	Oldham Robin H&Wesley B
320 252 06 00	1.00	SFD	1.00	1.00	1.00	\$0.00	\$0.00	Montgomery Daniel C&Juliet R

EXHIBIT C - Assessment Roll (Fiscal Year 2013)
Rancho Encantada/Stonebridge Estates Maintenance Assessment District

Parcel Number	Acres/ Units ⁽¹⁾	Land Use ⁽²⁾	Assessment Factors		Total EBU's	Unit Cost (\$/EBU)	FY 2013 ⁽⁴⁾ Assessment	Owner Name
			Land Use ⁽²⁾	Benefit ⁽³⁾				
320 252 07 00	1.00	SFD	1.00	1.00	1.00	\$0.00	\$0.00	Alexander Scott
320 252 08 00	1.00	SFD	1.00	1.00	1.00	\$0.00	\$0.00	Cetin Joseph&Christin Family Trust 05-04-06
320 252 09 00	1.00	SFD	1.00	1.00	1.00	\$0.00	\$0.00	Hyde Family Trust 04-23-07
320 252 10 00	1.00	SFD	1.00	1.00	1.00	\$0.00	\$0.00	Deilke Daniel&Kristen
320 252 11 00	1.00	SFD	1.00	1.00	1.00	\$0.00	\$0.00	Strongwater Jason G&Pamela J
320 252 12 00	1.00	SFD	1.00	1.00	1.00	\$0.00	\$0.00	Lemoine John R
320 252 13 00	1.00	SFD	1.00	1.00	1.00	\$0.00	\$0.00	Matar Charles Revocable Trust 05-07-10
320 252 14 00	1.00	SFD	1.00	1.00	1.00	\$0.00	\$0.00	Lukas Family Trust 09-30-11
320 252 15 00	1.00	SFD	1.00	1.00	1.00	\$0.00	\$0.00	Pugeda Cesar B&Cynthia A
320 252 16 00	1.00	SFD	1.00	1.00	1.00	\$0.00	\$0.00	Rodriguez John C U&Laryna B O
320 252 17 00	1.00	SFD	1.00	1.00	1.00	\$0.00	\$0.00	Haughey Michael P&Miriam I
320 252 18 00	1.00	SFD	1.00	1.00	1.00	\$0.00	\$0.00	Pereira Anthony O&Melina T
320 252 19 00	1.00	SFD	1.00	1.00	1.00	\$0.00	\$0.00	Chuang Michael&Carrie
320 252 20 00	1.00	SFD	1.00	1.00	1.00	\$0.00	\$0.00	Hua Binh
320 252 21 00	1.00	SFD	1.00	1.00	1.00	\$0.00	\$0.00	Syhanath Bounthone
320 252 22 00	1.00	SFD	1.00	1.00	1.00	\$0.00	\$0.00	Gallardo Medel C&Arlene A
320 252 23 00	1.00	SFD	1.00	1.00	1.00	\$0.00	\$0.00	Carrasco Family Trust 06-16-11
320 252 24 00	1.00	SFD	1.00	1.00	1.00	\$0.00	\$0.00	Rose Family Trust 09-04-03
320 252 25 00	1.00	SFD	1.00	1.00	1.00	\$0.00	\$0.00	Waller Reginald J
320 252 26 00	1.00	SFD	1.00	1.00	1.00	\$0.00	\$0.00	Baluyot Family Trust 05-19-11
320 252 27 00	1.00	SFD	1.00	1.00	1.00	\$0.00	\$0.00	Poon Family Trust 02-26-07
320 252 28 00	1.00	SFD	1.00	1.00	1.00	\$0.00	\$0.00	Ahluwalia Family Trust 07-20-04
320 252 29 00	1.00	SFD	1.00	1.00	1.00	\$0.00	\$0.00	Mitchell Russell T&Sangeeta A
320 252 30 00	1.00	SFD	1.00	1.00	1.00	\$0.00	\$0.00	Truong Katherine
320 252 31 00	1.00	SFD	1.00	1.00	1.00	\$0.00	\$0.00	Khamphavong Vance L&Touch Bonna
320 252 32 00	1.00	SFD	1.00	1.00	1.00	\$0.00	\$0.00	Carolino Roman&Roela C
320 252 33 00	1.00	SFD	1.00	1.00	1.00	\$0.00	\$0.00	Poon Henry K Revocable Trust 05-05-11
320 252 34 00	6.05	OSP	0.00	0.00	0.00	\$0.00	\$0.00	Stonebridge Estates Master Assn
320 252 35 00	5.45	OSP	0.00	0.00	0.00	\$0.00	\$0.00	Stonebridge Estates Master Assn
320 252 36 00	1.76	OSP	0.00	0.00	0.00	\$0.00	\$0.00	Stonebridge Estates Master Assn
320 252 37 00	0.09	OSP	0.00	0.00	0.00	\$0.00	\$0.00	Stonebridge Estates Master Assn
320 252 38 00	0.12	OSP	0.00	0.00	0.00	\$0.00	\$0.00	Stonebridge Estates Master Assn
320 252 39 00	0.25	OSP	0.00	0.00	0.00	\$0.00	\$0.00	Stonebridge Estates Master Assn
320 252 40 00	2.78	OSP	0.00	0.00	0.00	\$0.00	\$0.00	Stonebridge Estates Master Assn
320 252 41 00	0.77	OSP	0.00	0.00	0.00	\$0.00	\$0.00	Stonebridge Estates Master Assn
320 260 01 00	1.00	SFD	1.00	1.00	1.00	\$0.00	\$0.00	Hoxsie James
320 260 02 00	1.00	SFD	1.00	1.00	1.00	\$0.00	\$0.00	Turner D Arthur Iii&Christina S
320 260 03 00	1.00	SFD	1.00	1.00	1.00	\$0.00	\$0.00	Sanford Denis S&Karina A
320 260 04 00	1.00	SFD	1.00	1.00	1.00	\$0.00	\$0.00	Arceo Madonna E
320 260 05 00	1.00	SFD	1.00	1.00	1.00	\$0.00	\$0.00	Borer-Pastor Revocable Family Trust 12-19-06
320 260 06 00	1.00	SFD	1.00	1.00	1.00	\$0.00	\$0.00	Lasam Inocencio A Iii&Lannie G
320 260 07 00	1.00	SFD	1.00	1.00	1.00	\$0.00	\$0.00	Klinski Jerry&Angelica
320 260 08 00	1.00	SFD	1.00	1.00	1.00	\$0.00	\$0.00	Kim Alex&Sunny
320 260 09 00	1.00	SFD	1.00	1.00	1.00	\$0.00	\$0.00	Barno Roger P Tr&Barno Noelle Tr
320 260 10 00	1.00	SFD	1.00	1.00	1.00	\$0.00	\$0.00	Cordova Reynaldo P&Socorro T
320 260 11 00	1.00	SFD	1.00	1.00	1.00	\$0.00	\$0.00	Huang Billy Wei&Pang Sze Nga Family Trust 03-24-11
320 260 12 00	1.00	SFD	1.00	1.00	1.00	\$0.00	\$0.00	Nady Xavier C
320 260 13 00	1.00	SFD	1.00	1.00	1.00	\$0.00	\$0.00	Peralta Family Trust 02-05-01
320 260 14 00	1.00	SFD	1.00	1.00	1.00	\$0.00	\$0.00	Foss Family Trust 08-25-06
320 260 15 00	1.00	SFD	1.00	1.00	1.00	\$0.00	\$0.00	Doan Tam
320 260 16 00	1.00	SFD	1.00	1.00	1.00	\$0.00	\$0.00	Scelfo Family Trust 01-07-07
320 260 17 00	1.00	SFD	1.00	1.00	1.00	\$0.00	\$0.00	Crowley Living Trust 03-24-05

EXHIBIT C - Assessment Roll (Fiscal Year 2013)
Rancho Encantada/Stonebridge Estates Maintenance Assessment District

Parcel Number	Acres/ Units ⁽¹⁾	Land Use ⁽²⁾	Assessment Factors		Total EBU's	Unit Cost (\$/EBU)	FY 2013 ⁽⁴⁾ Assessment	Owner Name
			Land Use ⁽²⁾	Benefit ⁽³⁾				
320 260 18 00	1.00	SFD	1.00	1.00	1.00	\$0.00	\$0.00	Hernandez Daniel A&Jianuzzi Lori L
320 260 19 00	1.00	SFD	1.00	1.00	1.00	\$0.00	\$0.00	Hole Scott W&Heather Y
320 260 20 00	1.00	SFD	1.00	1.00	1.00	\$0.00	\$0.00	Goldstock Brett M&Pessutti Suzy M
320 260 21 00	1.00	SFD	1.00	1.00	1.00	\$0.00	\$0.00	Tung Family Trust 02-20-06
320 260 22 00	1.00	SFD	1.00	1.00	1.00	\$0.00	\$0.00	Pisegna Thomas F&Liliane
320 260 23 00	1.00	SFD	1.00	1.00	1.00	\$0.00	\$0.00	Bowles Geoffrey A&Tannaz T
320 260 24 00	1.00	SFD	1.00	1.00	1.00	\$0.00	\$0.00	Doria Rogelio S&Ellen G
320 260 25 00	1.00	SFD	1.00	1.00	1.00	\$0.00	\$0.00	Barger Family Trust 02-12-11
320 260 26 00	1.00	SFD	1.00	1.00	1.00	\$0.00	\$0.00	Huynh Paul Thanh&Lien Phuong
320 260 27 00	1.00	SFD	1.00	1.00	1.00	\$0.00	\$0.00	Hundal Palvinder S&Narinder K
320 260 28 00	1.00	SFD	1.00	1.00	1.00	\$0.00	\$0.00	Soliman Florante A&Eden R
320 260 29 00	1.00	SFD	1.00	1.00	1.00	\$0.00	\$0.00	Cuasay Nestor S&Lucy S
320 260 30 00	1.00	SFD	1.00	1.00	1.00	\$0.00	\$0.00	Abouchabki Revocable Trust 05-18-11
320 260 31 00	1.00	SFD	1.00	1.00	1.00	\$0.00	\$0.00	Manivone Bounthavy K&Carol T
320 260 32 00	1.00	SFD	1.00	1.00	1.00	\$0.00	\$0.00	Isaac Christopher B&Anna M
320 260 33 00	1.00	SFD	1.00	1.00	1.00	\$0.00	\$0.00	Wrightson Shane E&Carolyn R
320 260 34 00	1.00	SFD	1.00	1.00	1.00	\$0.00	\$0.00	Johnson Clifford Jr
320 260 35 00	1.00	SFD	1.00	1.00	1.00	\$0.00	\$0.00	Elhag Ismail A&Christine Y
320 260 36 00	1.00	SFD	1.00	1.00	1.00	\$0.00	\$0.00	Dudang Pepito&Helen
320 260 37 00	1.00	SFD	1.00	1.00	1.00	\$0.00	\$0.00	Hom Raymond&Deborah
320 260 38 00	1.00	SFD	1.00	1.00	1.00	\$0.00	\$0.00	Lee John
320 260 39 00	1.00	SFD	1.00	1.00	1.00	\$0.00	\$0.00	Scifres Michael
320 260 40 00	1.00	SFD	1.00	1.00	1.00	\$0.00	\$0.00	Yang Steve&Diane
320 260 41 00	1.00	SFD	1.00	1.00	1.00	\$0.00	\$0.00	Fuentecilla Wilfredo F&Norma A
320 260 42 00	9.60	OSP	0.00	0.00	0.00	\$0.00	\$0.00	Stonebridge Estates Master Assn
320 260 43 00	0.84	OSP	0.00	0.00	0.00	\$0.00	\$0.00	Stonebridge Estates Master Assn
320 260 44 00	0.61	OSP	0.00	0.00	0.00	\$0.00	\$0.00	Stonebridge Estates Master Assn
320 260 45 00	0.08	OSP	0.00	0.00	0.00	\$0.00	\$0.00	Stonebridge Estates Master Assn
320 260 46 00	0.07	OSP	0.00	0.00	0.00	\$0.00	\$0.00	Stonebridge Estates Master Assn
320 260 47 00	0.06	OSP	0.00	0.00	0.00	\$0.00	\$0.00	Stonebridge Estates Master Assn
320 260 48 00	0.15	OSP	0.00	0.00	0.00	\$0.00	\$0.00	Stonebridge Estates Master Assn
320 261 01 00	1.00	SFD	1.00	1.00	1.00	\$0.00	\$0.00	Venkatesh Vijay B&Tuladhar Preeti
320 261 02 00	1.00	SFD	1.00	1.00	1.00	\$0.00	\$0.00	Bassig Eduardo B&Loreta D
320 261 03 00	1.00	SFD	1.00	1.00	1.00	\$0.00	\$0.00	Rowe Daniel D&Renee B
320 261 04 00	1.00	SFD	1.00	1.00	1.00	\$0.00	\$0.00	Martin Leslie D&Nessie P
320 261 05 00	1.00	SFD	1.00	1.00	1.00	\$0.00	\$0.00	Nguyen Dang Dinh&Huyen Thuy Hoa Ton Nu
320 261 06 00	1.00	SFD	1.00	1.00	1.00	\$0.00	\$0.00	Le Khai Van&Vo Thuy Bich
320 261 07 00	1.00	SFD	1.00	1.00	1.00	\$0.00	\$0.00	Molenaar Di Trust 03-03-04
320 261 08 00	1.00	SFD	1.00	1.00	1.00	\$0.00	\$0.00	Mohanta Samaresh&Apama
320 261 09 00	1.00	SFD	1.00	1.00	1.00	\$0.00	\$0.00	Youm Chan Hak
320 261 10 00	1.00	SFD	1.00	1.00	1.00	\$0.00	\$0.00	Bolton Brent R
320 261 11 00	1.00	SFD	1.00	1.00	1.00	\$0.00	\$0.00	Vingerelli Enrico G&Diana P
320 261 12 00	1.00	SFD	1.00	1.00	1.00	\$0.00	\$0.00	Erickson Jamie M&Leary-Erickson Jamie L
320 261 13 00	1.00	SFD	1.00	1.00	1.00	\$0.00	\$0.00	Schmitt Daniel P&Jacqueline L
320 261 14 00	1.00	SFD	1.00	1.00	1.00	\$0.00	\$0.00	Hall Joshua&Harris Rahbeka
320 261 15 00	1.00	SFD	1.00	1.00	1.00	\$0.00	\$0.00	Deguia Dominador F&Cynthia
320 261 16 00	1.00	SFD	1.00	1.00	1.00	\$0.00	\$0.00	Caraang Arlen B&Judy R
320 261 17 00	1.00	SFD	1.00	1.00	1.00	\$0.00	\$0.00	Quach Andy&Lam Jennie
320 261 18 00	1.00	SFD	1.00	1.00	1.00	\$0.00	\$0.00	Ta-Chim Family Trust 08-19-08
320 261 19 00	1.00	SFD	1.00	1.00	1.00	\$0.00	\$0.00	Halamy Esmatullah
320 261 20 00	1.00	SFD	1.00	1.00	1.00	\$0.00	\$0.00	Izzard Sierra S&Amber R
320 261 21 00	1.00	SFD	1.00	1.00	1.00	\$0.00	\$0.00	Duggan Miriam H

EXHIBIT C - Assessment Roll (Fiscal Year 2013)
Rancho Encantada/Stonebridge Estates Maintenance Assessment District

Parcel Number	Acres/ Units ⁽¹⁾	Land Use ⁽²⁾	Assessment Factors		Total EBU's	Unit Cost (\$/EBU)	FY 2013 ⁽⁴⁾ Assessment	Owner Name
			Land Use ⁽²⁾	Benefit ⁽³⁾				
320 261 22 00	1.00	SFD	1.00	1.00	1.00	\$0.00	\$0.00	Green Robert S&Deborah K
320 261 23 00	1.00	SFD	1.00	1.00	1.00	\$0.00	\$0.00	Sarkar Sandip&Mahasweta
320 261 24 00	1.00	SFD	1.00	1.00	1.00	\$0.00	\$0.00	Keller Kathleen M&Leif P
320 261 25 00	1.00	SFD	1.00	1.00	1.00	\$0.00	\$0.00	Salinas Melanio P&Noemi P
320 261 26 00	1.00	SFD	1.00	1.00	1.00	\$0.00	\$0.00	Baglas Trust 10-03-02
320 261 27 00	1.00	SFD	1.00	1.00	1.00	\$0.00	\$0.00	Gunawan Handoko&Deborah A
320 261 28 00	1.00	SFD	1.00	1.00	1.00	\$0.00	\$0.00	Engler Craig K&Reisinger-Engler Kara A
320 261 29 00	1.00	SFD	1.00	1.00	1.00	\$0.00	\$0.00	Hong Anthony&Hyeran
320 261 30 00	1.00	SFD	1.00	1.00	1.00	\$0.00	\$0.00	Hara Jerry P&Martha A
320 261 31 00	1.00	SFD	1.00	1.00	1.00	\$0.00	\$0.00	Mcnally Kevin P&Sandra L
320 261 32 00	1.00	SFD	1.00	1.00	1.00	\$0.00	\$0.00	Senthil Kumar&Shanmughapriya
320 261 33 00	1.00	SFD	1.00	1.00	1.00	\$0.00	\$0.00	Menon Living Trust 02-05-07
320 261 34 00	1.00	SFD	1.00	1.00	1.00	\$0.00	\$0.00	Lagman Reynaldo
320 261 35 00	1.00	SFD	1.00	1.00	1.00	\$0.00	\$0.00	Laranang Family Trust 03-15-06
320 261 36 00	1.00	SFD	1.00	1.00	1.00	\$0.00	\$0.00	Phim Run
320 261 37 00	3.28	OSP	0.00	0.00	0.00	\$0.00	\$0.00	Stonebridge Estates Master Assn
320 261 38 00	6.82	OSP	0.00	0.00	0.00	\$0.00	\$0.00	Stonebridge Estates Master Assn
320 261 39 00	0.11	OSP	0.00	0.00	0.00	\$0.00	\$0.00	Stonebridge Estates Master Assn
320 261 40 00	0.05	OSP	0.00	0.00	0.00	\$0.00	\$0.00	Stonebridge Estates Master Assn
320 261 41 00	0.13	OSP	0.00	0.00	0.00	\$0.00	\$0.00	Stonebridge Ests Master Assn
320 262 01 00	1.00	SFD	1.00	1.00	1.00	\$0.00	\$0.00	Baker Living Trust 10-13-10
320 262 02 00	1.00	SFD	1.00	1.00	1.00	\$0.00	\$0.00	Dahlen Jeffrey R&Trang K
320 262 03 00	1.00	SFD	1.00	1.00	1.00	\$0.00	\$0.00	Doria Manuel T&Leonida T
320 262 04 00	1.00	SFD	1.00	1.00	1.00	\$0.00	\$0.00	Alisuag Wilfredo <Aka Aisuag Willy>
320 262 05 00	1.00	SFD	1.00	1.00	1.00	\$0.00	\$0.00	Wiker David M&Susana L
320 262 06 00	1.00	SFD	1.00	1.00	1.00	\$0.00	\$0.00	Demary Scott W&Debra A
320 262 07 00	1.00	SFD	1.00	1.00	1.00	\$0.00	\$0.00	Mclane Catherine P
320 262 08 00	1.00	SFD	1.00	1.00	1.00	\$0.00	\$0.00	Sheu Fred W&Cindy M
320 262 09 00	1.00	SFD	1.00	1.00	1.00	\$0.00	\$0.00	Hernandez Radelle&Leilani
320 262 10 00	1.00	SFD	1.00	1.00	1.00	\$0.00	\$0.00	Ho Sai Yiu Duncan&Hui Yin Yee Benita
320 262 11 00	1.00	SFD	1.00	1.00	1.00	\$0.00	\$0.00	G S R Mortgage Loan Trust 2006-Ar2
320 262 12 00	1.00	SFD	1.00	1.00	1.00	\$0.00	\$0.00	Schroeder Family Trust 01-10-09
320 262 13 00	1.00	SFD	1.00	1.00	1.00	\$0.00	\$0.00	Yi Jung&Soon Yeo
320 262 14 00	1.00	SFD	1.00	1.00	1.00	\$0.00	\$0.00	Sigdestad Family Trust 11-09-04
320 262 15 00	1.00	SFD	1.00	1.00	1.00	\$0.00	\$0.00	Bridges John J Jr&Jennifer M
320 262 16 00	1.00	SFD	1.00	1.00	1.00	\$0.00	\$0.00	Nguyen Nam Thanh&Truong-Nguyen Giang Le
320 262 17 00	1.00	SFD	1.00	1.00	1.00	\$0.00	\$0.00	Huynh Tammie T
320 262 18 00	1.00	SFD	1.00	1.00	1.00	\$0.00	\$0.00	Ovalekar Sameer&Pallavi
320 262 19 00	1.00	SFD	1.00	1.00	1.00	\$0.00	\$0.00	Beltran Javier A&Cisneros Marcela
320 262 20 00	1.00	SFD	1.00	1.00	1.00	\$0.00	\$0.00	Phan Tammy T Trust 07-08-11
320 262 21 00	9.43	OSP	0.00	0.00	0.00	\$0.00	\$0.00	Stonebridge Estates Master Assn
320 262 22 00	0.09	OSP	0.00	0.00	0.00	\$0.00	\$0.00	Stonebridge Estates Master Assn
320 262 23 00	0.03	OSP	0.00	0.00	0.00	\$0.00	\$0.00	Stonebridge Estates Master Assn
320 262 24 00	0.02	OSP	0.00	0.00	0.00	\$0.00	\$0.00	Stonebridge Estates Master Assn
320 263 01 00	1.00	SFD	1.00	1.00	1.00	\$0.00	\$0.00	Vari Alexander V&Julie M
320 263 02 00	1.00	SFD	1.00	1.00	1.00	\$0.00	\$0.00	Kik Bozena&Leszek
320 263 03 00	1.00	SFD	1.00	1.00	1.00	\$0.00	\$0.00	Yeem Yongkap&Jeon Myung Ok Yeem
320 263 04 00	1.00	SFD	1.00	1.00	1.00	\$0.00	\$0.00	Lorion Lynard S&Maria L
320 263 05 00	1.00	SFD	1.00	1.00	1.00	\$0.00	\$0.00	Rubin Seth&Afari Niloofar
320 263 06 00	1.00	SFD	1.00	1.00	1.00	\$0.00	\$0.00	Blue Centurion Homes L L C
320 263 07 00	1.00	SFD	1.00	1.00	1.00	\$0.00	\$0.00	Pacal Regidor C
320 263 08 00	1.00	SFD	1.00	1.00	1.00	\$0.00	\$0.00	Gholmieh Ralph&Ayala Aletia

EXHIBIT C - Assessment Roll (Fiscal Year 2013)
Rancho Encantada/Stonebridge Estates Maintenance Assessment District

Parcel Number	Acres/ Units ⁽¹⁾	Land Use ⁽²⁾	Assessment Factors		Total EBU's	Unit Cost (\$/EBU)	FY 2013 ⁽⁴⁾ Assessment	Owner Name
			Land Use ⁽²⁾	Benefit ⁽³⁾				
320 263 09 00	1.00	SFD	1.00	1.00	1.00	\$0.00	\$0.00	Nguyen Mai Thi Bach
320 263 10 00	1.00	SFD	1.00	1.00	1.00	\$0.00	\$0.00	Faye Brian&Winniefred
320 263 11 00	1.00	SFD	1.00	1.00	1.00	\$0.00	\$0.00	Khorram Navid&Aleluya A
320 263 12 00	1.00	SFD	1.00	1.00	1.00	\$0.00	\$0.00	Salcedo Ana
320 263 13 00	1.00	SFD	1.00	1.00	1.00	\$0.00	\$0.00	Giambrone Brian N&Janine M
320 263 14 00	1.00	SFD	1.00	1.00	1.00	\$0.00	\$0.00	Aguilar Johnnie A&Adora B
320 263 15 00	1.00	SFD	1.00	1.00	1.00	\$0.00	\$0.00	Cresci John R&Cecilia B
320 263 16 00	1.00	SFD	1.00	1.00	1.00	\$0.00	\$0.00	Nguyen Tung Son&Tang Jenni
320 263 17 00	1.00	SFD	1.00	1.00	1.00	\$0.00	\$0.00	Villena Dennis D&Christine H
320 263 18 00	1.00	SFD	1.00	1.00	1.00	\$0.00	\$0.00	Go Annie R
320 263 19 00	1.00	SFD	1.00	1.00	1.00	\$0.00	\$0.00	Nutter Gregory T
320 263 20 00	1.00	SFD	1.00	1.00	1.00	\$0.00	\$0.00	Hudson-Wilcox Family Trust 07-13-10
320 263 21 00	1.00	SFD	1.00	1.00	1.00	\$0.00	\$0.00	Harden Kim&Emeline S
320 263 22 00	1.00	SFD	1.00	1.00	1.00	\$0.00	\$0.00	Ortuno Efrain&Jeannette A
320 263 23 00	1.00	SFD	1.00	1.00	1.00	\$0.00	\$0.00	Nanavati Trust 04-22-11
320 263 24 00	1.00	SFD	1.00	1.00	1.00	\$0.00	\$0.00	Torres Ronald&Christine
320 263 25 00	4.55	OSP	0.00	0.00	0.00	\$0.00	\$0.00	Stonebridge Estates Master Assn
320 263 26 00	0.28	OSP	0.00	0.00	0.00	\$0.00	\$0.00	Stonebridge Estates Master Assn
320 263 27 00	0.79	OSP	0.00	0.00	0.00	\$0.00	\$0.00	Stonebridge Estates Master Assn
320 263 28 00	0.06	OSP	0.00	0.00	0.00	\$0.00	\$0.00	Stonebridge Estates Master Assn
320 263 29 00	0.05	OSP	0.00	0.00	0.00	\$0.00	\$0.00	Stonebridge Estates Master Assn
320 270 01 00	1.00	SFD	1.00	1.00	1.00	\$0.00	\$0.00	Hu Alex&Ho Connie
320 270 02 00	1.00	SFD	1.00	1.00	1.00	\$0.00	\$0.00	Ofarrell Adam&Tracy
320 270 03 00	1.00	SFD	1.00	1.00	1.00	\$0.00	\$0.00	Stafford Christopher M&Cathleen D
320 270 04 00	1.00	SFD	1.00	1.00	1.00	\$0.00	\$0.00	Dubney Gregory&Gia M
320 270 05 00	1.00	SFD	1.00	1.00	1.00	\$0.00	\$0.00	Trachsel Sarah L
320 270 06 00	1.00	SFD	1.00	1.00	1.00	\$0.00	\$0.00	Tata Anil K&Satya V
320 270 07 00	1.00	SFD	1.00	1.00	1.00	\$0.00	\$0.00	Almquist Family Trust 06-20-01
320 270 08 00	1.00	SFD	1.00	1.00	1.00	\$0.00	\$0.00	Shake Jacques&Singamta
320 270 09 00	1.00	SFD	1.00	1.00	1.00	\$0.00	\$0.00	Cesaire Jacques&Jill
320 270 10 00	1.00	SFD	1.00	1.00	1.00	\$0.00	\$0.00	Le Nguyen Lance-Hoan
320 270 11 00	1.00	SFD	1.00	1.00	1.00	\$0.00	\$0.00	Moon Hee-Koo&Maria S
320 270 12 00	1.00	SFD	1.00	1.00	1.00	\$0.00	\$0.00	Baker Adam W
320 270 13 00	1.00	SFD	1.00	1.00	1.00	\$0.00	\$0.00	Thornton David N&Janeen G
320 270 14 00	1.00	SFD	1.00	1.00	1.00	\$0.00	\$0.00	Grosso Sal
320 270 15 00	1.00	SFD	1.00	1.00	1.00	\$0.00	\$0.00	Grazda David&Michelle
320 270 16 00	1.00	SFD	1.00	1.00	1.00	\$0.00	\$0.00	Gundy Allan P&Balistreri Isidoro 2004 Trust 07-02-04
320 270 17 00	1.00	SFD	1.00	1.00	1.00	\$0.00	\$0.00	Lien Hue Van&Nhan Lan Soc
320 270 18 00	1.06	OSP	0.00	0.00	0.00	\$0.00	\$0.00	Stonebridge Estates Master Assn
320 270 19 00	0.10	OSP	0.00	0.00	0.00	\$0.00	\$0.00	Stonebridge Estates Master Assn
320 271 01 00	1.00	SFD	1.00	1.00	1.00	\$0.00	\$0.00	Lam Kevin Nhan Tri&Nguyen Lien Kim
320 271 02 00	1.00	SFD	1.00	1.00	1.00	\$0.00	\$0.00	Suberlak Raymond J&Patrice P Trust 04-09-09
320 271 03 00	1.00	SFD	1.00	1.00	1.00	\$0.00	\$0.00	Gonzalez Gaspar C&Yolanda R
320 271 04 00	1.00	SFD	1.00	1.00	1.00	\$0.00	\$0.00	Putnam Patricia
320 271 05 00	1.00	SFD	1.00	1.00	1.00	\$0.00	\$0.00	Chuang Family Trust 12-22-10
320 271 06 00	1.00	SFD	1.00	1.00	1.00	\$0.00	\$0.00	Danker Family Trust 02-03-05
320 271 07 00	1.00	SFD	1.00	1.00	1.00	\$0.00	\$0.00	Lewis Marshall E&Marni S Trust 08-26-87
320 271 08 00	1.00	SFD	1.00	1.00	1.00	\$0.00	\$0.00	Wofford James W&Sylvia R
320 271 09 00	1.00	SFD	1.00	1.00	1.00	\$0.00	\$0.00	Diep Family Trust 03-05-11
320 271 10 00	1.00	SFD	1.00	1.00	1.00	\$0.00	\$0.00	Abts Douglas C&Taralyn T
320 271 11 00	1.00	SFD	1.00	1.00	1.00	\$0.00	\$0.00	Benton Mark&Stella R
320 271 12 00	1.00	SFD	1.00	1.00	1.00	\$0.00	\$0.00	Ecija Claudio&Dina Trust 11-03-93

EXHIBIT C - Assessment Roll (Fiscal Year 2013)
Rancho Encantada/Stonebridge Estates Maintenance Assessment District

Parcel Number	Acres/ Units ⁽¹⁾	Land Use ⁽²⁾	Assessment Factors		Total EBU's	Unit Cost (\$/EBU)	FY 2013 ⁽⁴⁾ Assessment	Owner Name
			Land Use ⁽²⁾	Benefit ⁽³⁾				
320 271 13 00	1.00	SFD	1.00	1.00	1.00	\$0.00	\$0.00	Samii Hadi R&Nassrin
320 271 14 00	1.00	SFD	1.00	1.00	1.00	\$0.00	\$0.00	Melancon Paul D&Bishara Michele
320 271 15 00	1.00	SFD	1.00	1.00	1.00	\$0.00	\$0.00	Omar Mahomed A&Tahera A
320 271 16 00	1.00	SFD	1.00	1.00	1.00	\$0.00	\$0.00	Bear Stearns Arm Trust 2007-3
320 271 17 00	1.00	SFD	1.00	1.00	1.00	\$0.00	\$0.00	Madbak Family Trust 10-19-99
320 271 18 00	1.00	SFD	1.00	1.00	1.00	\$0.00	\$0.00	Cooper 1993 Trust 02-11-93
320 271 19 00	1.00	SFD	1.00	1.00	1.00	\$0.00	\$0.00	Waynick Randall K&Rhonda L
320 271 20 00	1.00	SFD	1.00	1.00	1.00	\$0.00	\$0.00	Manzano Family Trust 12-22-04
320 271 21 00	1.00	SFD	1.00	1.00	1.00	\$0.00	\$0.00	Liu Teh Yi
320 271 25 00	1.00	SFD	1.00	1.00	1.00	\$0.00	\$0.00	Han Family Trust 12-03-02
320 271 26 00	1.00	SFD	1.00	1.00	1.00	\$0.00	\$0.00	Setioadi Andrijani
320 271 27 00	1.00	SFD	1.00	1.00	1.00	\$0.00	\$0.00	Ketzel Kevin E
320 271 28 00	1.00	SFD	1.00	1.00	1.00	\$0.00	\$0.00	Bremner Family Trust 02-04-03
320 271 29 00	1.00	SFD	1.00	1.00	1.00	\$0.00	\$0.00	Oconnell Timothy&Tamara Revocable Trust 07-27-98
320 271 30 00	1.00	SFD	1.00	1.00	1.00	\$0.00	\$0.00	Koo Paul&Joanna Family Trust 11-16-95
320 271 31 00	2.76	OSP	0.00	0.00	0.00	\$0.00	\$0.00	Stonebridge Estates Master Assn
320 271 32 00	0.32	OSP	0.00	0.00	0.00	\$0.00	\$0.00	Stonebridge Estates Master Assn
320 271 33 00	1.00	SFD	1.00	1.00	1.00	\$0.00	\$0.00	Oliveira Louis D&Gretchen D
320 271 34 00	1.00	SFD	1.00	1.00	1.00	\$0.00	\$0.00	Armour Family Trust 05-10-05
320 271 35 00	1.00	SFD	1.00	1.00	1.00	\$0.00	\$0.00	Watson Kandace
323 101 02 00	26.05	OSP	0.00	0.00	0.00	\$0.00	\$0.00	Sycamore Estates L L C
323 101 03 00	29.82	OSP	0.00	0.00	0.00	\$0.00	\$0.00	Sycamore Estates L L C
323 101 04 00	124.65	OSP	0.00	0.00	0.00	\$0.00	\$0.00	Sycamore Estates L L C
323 101 06 00	156.67	OSP	0.00	0.00	0.00	\$0.00	\$0.00	Sycamore Estates L L C
323 111 11 00	40.92	OSP	0.00	0.00	0.00	\$0.00	\$0.00	Sycamore Estates L L C
323 111 12 00	198.24	OSP	0.00	0.00	0.00	\$0.00	\$0.00	Sycamore Estates L L C
323 111 13 00	88.46	OSP	0.00	0.00	0.00	\$0.00	\$0.00	Sycamore Estates L L C
323 111 14 00	1.18	OSP	0.00	0.00	0.00	\$0.00	\$0.00	Sycamore Estates L L C
323 111 15 00	2.00	OSP	0.00	0.00	0.00	\$0.00	\$0.00	Sycamore Estates L L C
325 021 06 00	40.00	OSP	0.00	0.00	0.00	\$0.00	\$0.00	Sycamore Estates L L C
325 021 07 00	40.00	OSP	0.00	0.00	0.00	\$0.00	\$0.00	Sycamore Estates L L C
325 021 08 00	40.00	OSP	0.00	0.00	0.00	\$0.00	\$0.00	Sycamore Estates L L C
325 021 09 00	40.00	OSP	0.00	0.00	0.00	\$0.00	\$0.00	Sycamore Estates L L C
325 021 10 00	166.12	OSP	0.00	0.00	0.00	\$0.00	\$0.00	Sycamore Estates L L C
325 050 10 00	42.56	OSP	0.00	0.00	0.00	\$0.00	\$0.00	City Of San Diego
325 050 12 00	80.00	OSP	0.00	0.00	0.00	\$0.00	\$0.00	Sycamore Estates L L C
325 050 15 00	32.25	OSP	0.00	0.00	0.00	\$0.00	\$0.00	Sycamore Estates L L C
325 050 16 00	38.57	OSP	0.00	0.00	0.00	\$0.00	\$0.00	Sycamore Estates L L C
325 051 04 00	208.55	OSP	0.00	0.00	0.00	\$0.00	\$0.00	City Of San Diego
325 070 09 00	8.93	UTL	3.00	0.10	2.68	\$0.00	\$0.00	San Diego County Water Authority
325 070 10 00	6.70	PKU	0.50	0.10	0.34	\$0.00	\$0.00	Sycamore Estates L L C
325 070 11 00	34.24	OSP	0.00	0.00	0.00	\$0.00	\$0.00	Stonebridge Estates Master Assn
325 070 12 00	4.80	OSP	0.00	0.00	0.00	\$0.00	\$0.00	Stonebridge Estates Master Assn
325 070 13 00	8.92	OSP	0.00	0.00	0.00	\$0.00	\$0.00	Stonebridge Estates Master Assn
325 070 14 00	0.24	OSP	0.00	0.00	0.00	\$0.00	\$0.00	City Of San Diego
325 070 15 00	13.06	OSP	0.00	0.00	0.00	\$0.00	\$0.00	Stonebridge Estates Master Assn
325 070 16 00	23.76	OSP	0.00	0.00	0.00	\$0.00	\$0.00	Stonebridge Estates Master Assn
325 070 17 00	22.88	OSP	0.00	0.00	0.00	\$0.00	\$0.00	Sycamore Estates L L C
325 070 18 00	14.96	OSP	0.00	0.00	0.00	\$0.00	\$0.00	Stonebridge Estates Master Assn
325 071 06 00	85.59	OSP	0.00	0.00	0.00	\$0.00	\$0.00	Stonebridge Estates Master Assn
325 071 11 00	8.16	EPS	5.00	0.30	12.24	\$0.00	\$0.00	City Of San Diego
325 071 12 00	9.57	PKU	0.50	0.10	0.48	\$0.00	\$0.00	The Roman Catholic Bishop Of San Diego

EXHIBIT C - Assessment Roll (Fiscal Year 2013)
Rancho Encantada/Stonebridge Estates Maintenance Assessment District

Parcel Number	Acres/ Units ⁽¹⁾	Land Use ⁽²⁾	Assessment Factors		Total EBU's	Unit Cost (\$/EBU)	FY 2013 ⁽⁴⁾ Assessment	Owner Name
			Land Use ⁽²⁾	Benefit ⁽³⁾				
325 071 13 00	106.00	MFR	0.70	1.00	74.20	\$0.00	\$0.00	Fairfield Sagewood L P
325 071 14 00	0.41	OSP	0.00	0.00	0.00	\$0.00	\$0.00	Sycamore Estates L L C
325 071 15 00	0.78	OSP	0.00	0.00	0.00	\$0.00	\$0.00	Sycamore Estates L L C
325 071 16 00	1.29	OSP	0.00	0.00	0.00	\$0.00	\$0.00	Sycamore Estates L L C
325 080 01 00	1.00	SFD	1.00	1.00	1.00	\$0.00	\$0.00	Prabhakaran Rajeev T&Kollamparambil Reena
325 080 02 00	1.00	SFD	1.00	1.00	1.00	\$0.00	\$0.00	Graat Kenneth T&Pamela D
325 080 03 00	1.00	SFD	1.00	1.00	1.00	\$0.00	\$0.00	C M S A Trust 11-17-09
325 080 04 00	1.00	SFD	1.00	1.00	1.00	\$0.00	\$0.00	Nigrin Markus&Iris Family Trust 11-30-07
325 080 05 00	1.00	SFD	1.00	1.00	1.00	\$0.00	\$0.00	Kadous Tamer A&Bassiouny Nermeen A
325 080 06 00	1.00	SFD	1.00	1.00	1.00	\$0.00	\$0.00	Orie Xing Trust 12-11-02
325 080 07 00	1.00	SFD	1.00	1.00	1.00	\$0.00	\$0.00	Telles Robert Jr&Tiffany
325 080 08 00	1.00	SFD	1.00	1.00	1.00	\$0.00	\$0.00	Cutler Robert H&Becki R
325 080 09 00	1.00	SFD	1.00	1.00	1.00	\$0.00	\$0.00	Matteson 1999 Trust 02-04-99
325 080 10 00	1.00	SFD	1.00	1.00	1.00	\$0.00	\$0.00	Vincent Everett&Donna M
325 080 11 00	1.00	SFD	1.00	1.00	1.00	\$0.00	\$0.00	Tran Phat T
325 080 12 00	1.00	SFD	1.00	1.00	1.00	\$0.00	\$0.00	Rogers Benjamin F Iii&Margaret L
325 080 13 00	1.00	SFD	1.00	1.00	1.00	\$0.00	\$0.00	Saffee Family Trust 02-11-04
325 080 14 00	0.12	OSP	0.00	0.00	0.00	\$0.00	\$0.00	Stonebridge Estates Master Assn
325 080 15 00	0.07	OSP	0.00	0.00	0.00	\$0.00	\$0.00	Stonebridge Estates Master Assn
325 080 16 00	0.04	OSP	0.00	0.00	0.00	\$0.00	\$0.00	Stonebridge Estates Master Assn
325 081 01 00	1.00	SFD	1.00	1.00	1.00	\$0.00	\$0.00	Wardhika Tjan A&Chairil Rosna
325 081 02 00	1.00	SFD	1.00	1.00	1.00	\$0.00	\$0.00	Patel Family Trust 3 04-28-00
325 081 03 00	1.00	SFD	1.00	1.00	1.00	\$0.00	\$0.00	Ho Trust 10-10-07
325 081 04 00	1.00	SFD	1.00	1.00	1.00	\$0.00	\$0.00	Perry Guy
325 081 05 00	1.00	SFD	1.00	1.00	1.00	\$0.00	\$0.00	Suder Living Trust 03-18-97
325 081 06 00	1.00	SFD	1.00	1.00	1.00	\$0.00	\$0.00	Seitz Family Trust 11-29-04
325 081 07 00	1.00	SFD	1.00	1.00	1.00	\$0.00	\$0.00	Attari Family Trust 02-24-09
325 081 08 00	1.00	SFD	1.00	1.00	1.00	\$0.00	\$0.00	Estefanos Joseph M&Icho Christine J
325 081 09 00	1.00	SFD	1.00	1.00	1.00	\$0.00	\$0.00	Brookfield 8 L L C
325 081 10 00	1.00	SFD	1.00	1.00	1.00	\$0.00	\$0.00	Brookfield 8 L L C
325 081 11 00	1.00	SFD	1.00	1.00	1.00	\$0.00	\$0.00	Brookfield 8 L L C
325 081 12 00	1.00	SFD	1.00	1.00	1.00	\$0.00	\$0.00	Brookfield 8 L L C
325 081 13 00	1.00	SFD	1.00	1.00	1.00	\$0.00	\$0.00	Brookfield 8 L L C
325 081 14 00	1.00	SFD	1.00	1.00	1.00	\$0.00	\$0.00	Brookfield 8 L L C
325 081 15 00	1.00	SFD	1.00	1.00	1.00	\$0.00	\$0.00	Brookfield 8 L L C
325 081 16 00	1.00	SFD	1.00	1.00	1.00	\$0.00	\$0.00	Brookfield 8 L L C
325 081 17 00	1.00	SFD	1.00	1.00	1.00	\$0.00	\$0.00	Brookfield 8 L L C
325 081 18 00	1.00	SFD	1.00	1.00	1.00	\$0.00	\$0.00	Hayatt Samuel
325 081 19 00	1.00	SFD	1.00	1.00	1.00	\$0.00	\$0.00	Menefee Shawn A&Jill S
325 081 20 00	1.00	SFD	1.00	1.00	1.00	\$0.00	\$0.00	Dugan Joseph F
325 081 21 00	1.00	SFD	1.00	1.00	1.00	\$0.00	\$0.00	Akiki Michael E&Jeanine F
325 081 22 00	1.00	SFD	1.00	1.00	1.00	\$0.00	\$0.00	Chackel Family Trust 02-08-06
325 081 23 00	1.00	SFD	1.00	1.00	1.00	\$0.00	\$0.00	Vitovsky Family Trust 08-26-06
325 081 24 00	0.02	OSP	0.00	0.00	0.00	\$0.00	\$0.00	Stonebridge Estates Master Assn
325 082 01 00	1.00	SFD	1.00	1.00	1.00	\$0.00	\$0.00	Santacroe Mark A&Sarah L Revocable 2012 Trust
325 082 02 00	1.00	SFD	1.00	1.00	1.00	\$0.00	\$0.00	Warren A&J Revocable Trust 04-17-07
325 082 03 00	1.00	SFD	1.00	1.00	1.00	\$0.00	\$0.00	Hong An Thien&Luu Kimtam
325 082 04 00	1.00	SFD	1.00	1.00	1.00	\$0.00	\$0.00	Waterhouse Family Trust 05-15-02
325 082 05 00	1.00	SFD	1.00	1.00	1.00	\$0.00	\$0.00	Fleischman Louis&Erlinda
325 082 06 00	1.00	SFD	1.00	1.00	1.00	\$0.00	\$0.00	Weber Jeffery S&Elizabeth T
325 082 07 00	1.00	SFD	1.00	1.00	1.00	\$0.00	\$0.00	Kane Edward&Janet Trust 06-15-09
325 082 08 00	1.00	SFD	1.00	1.00	1.00	\$0.00	\$0.00	Flournoy Mark&Shin Family Trust 01-24-03

EXHIBIT C - Assessment Roll (Fiscal Year 2013)
Rancho Encantada/Stonebridge Estates Maintenance Assessment District

Parcel Number	Acres/ Units ⁽¹⁾	Land Use ⁽²⁾	Assessment Factors		Total EBU's	Unit Cost (\$/EBU)	FY 2013 ⁽⁴⁾ Assessment	Owner Name
			Land Use ⁽²⁾	Benefit ⁽³⁾				
325 082 09 00	1.00	SFD	1.00	1.00	1.00	\$0.00	\$0.00	Nathanson Dmitriy&Victoria
325 082 10 00	1.00	SFD	1.00	1.00	1.00	\$0.00	\$0.00	Truong Phat&Van Kathy
325 082 11 00	1.00	SFD	1.00	1.00	1.00	\$0.00	\$0.00	Mekkoth Ajith S&Bindu R
325 082 12 00	1.00	SFD	1.00	1.00	1.00	\$0.00	\$0.00	Swafford Michael&Susan K
325 082 13 00	1.00	SFD	1.00	1.00	1.00	\$0.00	\$0.00	Truscott Family 2004 Trust 11-19-04
325 082 14 00	1.00	SFD	1.00	1.00	1.00	\$0.00	\$0.00	Nabulsi Taher&Abushaban Rola
325 082 15 00	1.00	SFD	1.00	1.00	1.00	\$0.00	\$0.00	Chinoy Bilal&Tejal
325 082 16 00	1.00	SFD	1.00	1.00	1.00	\$0.00	\$0.00	Steed Paul M&Mcgrady-Steed Jill
325 082 17 00	1.00	SFD	1.00	1.00	1.00	\$0.00	\$0.00	Sherev Dimitri A&Patricia A
325 082 18 00	1.00	SFD	1.00	1.00	1.00	\$0.00	\$0.00	Sorenson John&Julie
325 082 19 00	1.00	SFD	1.00	1.00	1.00	\$0.00	\$0.00	Stoppenbrink Stephen E&Laurie A
325 082 20 00	1.00	SFD	1.00	1.00	1.00	\$0.00	\$0.00	Vuong Banh&Nancy Ngan Thuy Revocable 2007 Trust
325 082 21 00	1.50	OSP	0.00	0.00	0.00	\$0.00	\$0.00	Stonebridge Estates Master Assn
325 082 22 00	0.17	OSP	0.00	0.00	0.00	\$0.00	\$0.00	Stonebridge Estates Master Assn
325 082 23 00	0.10	OSP	0.00	0.00	0.00	\$0.00	\$0.00	Stonebridge Estates Master Assn
325 082 24 00	0.05	OSP	0.00	0.00	0.00	\$0.00	\$0.00	Stonebridge Estates Master Assn
325 083 01 00	1.00	SFD	1.00	1.00	1.00	\$0.00	\$0.00	Wiffen Stuart P&Sherry A
325 083 02 00	1.00	SFD	1.00	1.00	1.00	\$0.00	\$0.00	Johnston Andrew W&Lisa A
325 083 03 00	1.00	SFD	1.00	1.00	1.00	\$0.00	\$0.00	Falzone Steven J&Mary E
325 083 04 00	1.00	SFD	1.00	1.00	1.00	\$0.00	\$0.00	Fletcher Elizabeth N&Richard A
325 083 05 00	1.00	SFD	1.00	1.00	1.00	\$0.00	\$0.00	Lee Fern Y&Koh Sandrina Y
325 083 06 00	1.00	SFD	1.00	1.00	1.00	\$0.00	\$0.00	Purchatzke Jeffrey&Lorena C
325 083 07 00	1.00	SFD	1.00	1.00	1.00	\$0.00	\$0.00	Rizzo Joel F Jr&Courtney C
325 083 08 00	1.00	SFD	1.00	1.00	1.00	\$0.00	\$0.00	Bench Shawn R
325 083 09 00	1.00	SFD	1.00	1.00	1.00	\$0.00	\$0.00	Nicholas Julian J
325 083 10 00	1.00	SFD	1.00	1.00	1.00	\$0.00	\$0.00	Mellinger Douglas N
325 083 11 00	1.00	SFD	1.00	1.00	1.00	\$0.00	\$0.00	Kuhn/Darress Family Trust 01-20-09
325 083 12 00	1.00	SFD	1.00	1.00	1.00	\$0.00	\$0.00	Yannuzzi Daniel N&June M
325 083 13 00	1.00	SFD	1.00	1.00	1.00	\$0.00	\$0.00	Toro John A&Kirsten
325 083 14 00	1.00	SFD	1.00	1.00	1.00	\$0.00	\$0.00	Bracamonte Carlos&Maria
325 083 15 00	1.00	SFD	1.00	1.00	1.00	\$0.00	\$0.00	Ko S Timothy
325 083 16 00	1.00	SFD	1.00	1.00	1.00	\$0.00	\$0.00	Molstre Matthew C&Gemsio Jenny M
325 083 17 00	1.00	SFD	1.00	1.00	1.00	\$0.00	\$0.00	Dealba Hector H G
325 083 18 00	1.00	SFD	1.00	1.00	1.00	\$0.00	\$0.00	Saad Walid&Arlene
325 083 19 00	0.02	OSP	0.00	0.00	0.00	\$0.00	\$0.00	Stonebridge Estates Master Assn
325 084 01 00	1.00	SFD	1.00	1.00	1.00	\$0.00	\$0.00	Pachter/Fein Family Trust 01-28-11
325 084 02 00	1.00	SFD	1.00	1.00	1.00	\$0.00	\$0.00	Trejo Alejandro
325 084 03 00	1.00	SFD	1.00	1.00	1.00	\$0.00	\$0.00	Madden Jeffrey J&Aurora A
325 084 04 00	1.00	SFD	1.00	1.00	1.00	\$0.00	\$0.00	Deshpande Manoj M&Deepali M
325 084 05 00	1.00	SFD	1.00	1.00	1.00	\$0.00	\$0.00	Adams Justin
325 084 06 00	1.00	SFD	1.00	1.00	1.00	\$0.00	\$0.00	Giovacchini David
325 084 07 00	1.00	SFD	1.00	1.00	1.00	\$0.00	\$0.00	Ziperovich Pablo A&Glance S
325 084 08 00	1.00	SFD	1.00	1.00	1.00	\$0.00	\$0.00	Lee Long Chi&Lien-Ching Linda Family Trust 06-04-97
325 084 09 00	1.00	SFD	1.00	1.00	1.00	\$0.00	\$0.00	Danishwar Jamila
325 084 10 00	1.00	SFD	1.00	1.00	1.00	\$0.00	\$0.00	Brookfield 8 L L C
325 084 11 00	1.00	SFD	1.00	1.00	1.00	\$0.00	\$0.00	Brookfield 8 L L C
325 084 12 00	1.00	SFD	1.00	1.00	1.00	\$0.00	\$0.00	Hewitson Aaron&Brienne
325 084 13 00	1.00	SFD	1.00	1.00	1.00	\$0.00	\$0.00	Hering Ted&Ashlea
325 084 14 00	1.00	SFD	1.00	1.00	1.00	\$0.00	\$0.00	Brookfield 8 L L C
325 084 15 00	1.00	SFD	1.00	1.00	1.00	\$0.00	\$0.00	Brookfield 8 L L C
325 084 16 00	1.00	SFD	1.00	1.00	1.00	\$0.00	\$0.00	Schwenker Adam&Joan
325 084 17 00	1.00	SFD	1.00	1.00	1.00	\$0.00	\$0.00	Hancock Greg&Michele

EXHIBIT C - Assessment Roll (Fiscal Year 2013)
Rancho Encantada/Stonebridge Estates Maintenance Assessment District

Parcel Number	Acres/Units ⁽¹⁾	Land Use ⁽²⁾	Assessment Factors		Total EBU's	Unit Cost (\$/EBU)	FY 2013 ⁽⁴⁾ Assessment	Owner Name
			Land Use ⁽²⁾	Benefit ⁽³⁾				
325 084 18 00	1.00	SFD	1.00	1.00	1.00	\$0.00	\$0.00	Fakhouri Andrew&Andrea
325 084 19 00	0.07	OSP	0.00	0.00	0.00	\$0.00	\$0.00	Stonebridge Estates Master Assn
325 084 20 00	0.02	OSP	0.00	0.00	0.00	\$0.00	\$0.00	Stonebridge Estates Master Assn
325 090 01 00	1.00	SFD	1.00	1.00	1.00	\$0.00	\$0.00	Batterton Frank R&Susan J Revocable Trust 12-29-99
325 090 02 00	1.00	SFD	1.00	1.00	1.00	\$0.00	\$0.00	Shweid Roger M&Mary E
325 090 03 00	1.00	SFD	1.00	1.00	1.00	\$0.00	\$0.00	Schlundt Suzanne
325 090 04 00	1.00	SFD	1.00	1.00	1.00	\$0.00	\$0.00	Tran Tuan&Thuy Hoa
325 090 05 00	1.00	SFD	1.00	1.00	1.00	\$0.00	\$0.00	Ditullio Vincent
325 090 06 00	1.00	SFD	1.00	1.00	1.00	\$0.00	\$0.00	Ramirez Stephen P&Maria E
325 090 07 00	1.00	SFD	1.00	1.00	1.00	\$0.00	\$0.00	Garbo Edward A
325 090 08 00	1.00	SFD	1.00	1.00	1.00	\$0.00	\$0.00	Mcdonald Shawn E&Cheung Sandy W
325 090 09 00	1.00	SFD	1.00	1.00	1.00	\$0.00	\$0.00	Javier Avelino C Jr&Lorna S
325 090 10 00	1.00	SFD	1.00	1.00	1.00	\$0.00	\$0.00	Collingsworth Mark&Catherine
325 090 11 00	1.00	SFD	1.00	1.00	1.00	\$0.00	\$0.00	Sanderlin Frank D&Dana C
325 090 12 00	1.00	SFD	1.00	1.00	1.00	\$0.00	\$0.00	Ball David A&Kelly C
325 090 13 00	1.00	SFD	1.00	1.00	1.00	\$0.00	\$0.00	Alsup Billie R&Mamie M
325 090 14 00	1.00	SFD	1.00	1.00	1.00	\$0.00	\$0.00	Sezto-To Family Trust 04-18-00
325 090 15 00	14.59	OSP	0.00	0.00	0.00	\$0.00	\$0.00	Stonebridge Estates Master Assn
325 090 16 00	3.03	OSP	0.00	0.00	0.00	\$0.00	\$0.00	Stonebridge Estates Master Assn
325 090 17 00	0.08	OSP	0.00	0.00	0.00	\$0.00	\$0.00	Stonebridge Estates Master Assn
325 090 18 00	3.15	OSP	0.00	0.00	0.00	\$0.00	\$0.00	Stonebridge Estates Master Assn
325 090 19 00	0.31	OSP	0.00	0.00	0.00	\$0.00	\$0.00	Stonebridge Estates Master Assn
325 091 01 00	1.00	SFD	1.00	1.00	1.00	\$0.00	\$0.00	Babelli Maher&Miyashita Noriko
325 091 02 00	1.00	SFD	1.00	1.00	1.00	\$0.00	\$0.00	Kim Family Trust 02-21-03
325 091 03 00	1.00	SFD	1.00	1.00	1.00	\$0.00	\$0.00	Babbitt Edward J&Erica R
325 091 04 00	1.00	SFD	1.00	1.00	1.00	\$0.00	\$0.00	Hua Ryan&Tran Lori Ann
325 091 05 00	1.00	SFD	1.00	1.00	1.00	\$0.00	\$0.00	Wietfeldt Richard D
325 091 06 00	1.00	SFD	1.00	1.00	1.00	\$0.00	\$0.00	Brown Christopher Michael&Traci Ann
325 091 07 00	1.00	SFD	1.00	1.00	1.00	\$0.00	\$0.00	C W M B S Inc C H L Mortgage Pass-Through Trust 20
325 091 08 00	1.00	SFD	1.00	1.00	1.00	\$0.00	\$0.00	Smythe Family Trust 11-24-99
325 091 09 00	1.00	SFD	1.00	1.00	1.00	\$0.00	\$0.00	Pirigyi Stephen A&Jennifer A
325 091 10 00	1.00	SFD	1.00	1.00	1.00	\$0.00	\$0.00	Davis Revocable Trust 10-19-04
325 091 11 00	1.00	SFD	1.00	1.00	1.00	\$0.00	\$0.00	Huynh Nghia&Phan Tra Thi
325 091 12 00	1.00	SFD	1.00	1.00	1.00	\$0.00	\$0.00	Bank Of America
325 091 13 00	1.00	SFD	1.00	1.00	1.00	\$0.00	\$0.00	Quach Family Trust 02-26-09
325 091 14 00	1.00	SFD	1.00	1.00	1.00	\$0.00	\$0.00	Depriest Richard D&Mary C Living Trust 08-21-05
325 091 15 00	1.00	SFD	1.00	1.00	1.00	\$0.00	\$0.00	Quinn Family Trust 12-04-09
325 091 16 00	1.00	SFD	1.00	1.00	1.00	\$0.00	\$0.00	Ivy Richard J&Kirsten
325 091 17 00	1.00	SFD	1.00	1.00	1.00	\$0.00	\$0.00	Tan Hau H&Nguyen Julie-Mai
325 091 18 00	1.00	SFD	1.00	1.00	1.00	\$0.00	\$0.00	Chevalier Diana
325 091 19 00	1.00	SFD	1.00	1.00	1.00	\$0.00	\$0.00	Manners Cameron&Cheryl
325 091 20 00	1.00	SFD	1.00	1.00	1.00	\$0.00	\$0.00	Jackiewicz-Schade Family Trust 06-02-04
325 091 21 00	1.00	SFD	1.00	1.00	1.00	\$0.00	\$0.00	Palmer Ranch L P
325 091 22 00	1.00	SFD	1.00	1.00	1.00	\$0.00	\$0.00	Hilton Kenneth L&Valerie V
325 091 23 00	21.16	OSP	0.00	0.00	0.00	\$0.00	\$0.00	Stonebridge Estates Master Association
325 091 24 00	2.72	OSP	0.00	0.00	0.00	\$0.00	\$0.00	Stonebridge Estates Master Association
325 091 25 00	15.58	OSP	0.00	0.00	0.00	\$0.00	\$0.00	Stonebridge Estates Master Association
325 091 26 00	1.46	OSP	0.00	0.00	0.00	\$0.00	\$0.00	Stonebridge Estates Master Assn
325 091 27 00	0.04	OSP	0.00	0.00	0.00	\$0.00	\$0.00	Stonebridge Estates Master Assn
325 091 28 00	0.33	OSP	0.00	0.00	0.00	\$0.00	\$0.00	Stonebridge Estates Master Assn
325 091 29 00	0.02	OSP	0.00	0.00	0.00	\$0.00	\$0.00	Stonebridge Estates Master Association
325 100 01 00	1.00	SFD	1.00	1.00	1.00	\$0.00	\$0.00	Johnson Steven K&Sheryl M

EXHIBIT C - Assessment Roll (Fiscal Year 2013)
Rancho Encantada/Stonebridge Estates Maintenance Assessment District

Parcel Number	Acres/ Units ⁽¹⁾	Land Use ⁽²⁾	Assessment Factors		Total EBU's	Unit Cost (\$/EBU)	FY 2013 ⁽⁴⁾ Assessment	Owner Name
			Land Use ⁽²⁾	Benefit ⁽³⁾				
325 100 02 00	1.00	SFD	1.00	1.00	1.00	\$0.00	\$0.00	Shields L Scott&Brooke M
325 100 03 00	1.00	SFD	1.00	1.00	1.00	\$0.00	\$0.00	Shaw Christopher V&Beitkounou Pauline
325 100 04 00	1.00	SFD	1.00	1.00	1.00	\$0.00	\$0.00	Northcote Family Trust 02-09-94
325 100 05 00	1.00	SFD	1.00	1.00	1.00	\$0.00	\$0.00	Landie Family Trust 02-28-90
325 100 06 00	1.00	SFD	1.00	1.00	1.00	\$0.00	\$0.00	Lyons Michael G&Cynthia G
325 100 07 00	1.00	SFD	1.00	1.00	1.00	\$0.00	\$0.00	Steinback Mark&Donna Revocable Trust 07-26-95
325 100 08 00	1.00	SFD	1.00	1.00	1.00	\$0.00	\$0.00	Tan Tom Hu&Liu Ning
325 100 09 00	1.00	SFD	1.00	1.00	1.00	\$0.00	\$0.00	Manos Paul J&Gina M
325 100 10 00	1.00	SFD	1.00	1.00	1.00	\$0.00	\$0.00	Huynh Le Dong&Chau Kari Le
325 100 11 00	1.00	SFD	1.00	1.00	1.00	\$0.00	\$0.00	Phu Dat&Chau Hope N
325 100 12 00	1.00	SFD	1.00	1.00	1.00	\$0.00	\$0.00	Correa Marcos F Jr&Lavenia J
325 100 13 00	7.00	OSP	0.00	0.00	0.00	\$0.00	\$0.00	Stonebridge Estates Master Assn
325 100 14 00	0.10	OSP	0.00	0.00	0.00	\$0.00	\$0.00	Stonebridge Estates Master Assn
325 100 15 00	0.06	OSP	0.00	0.00	0.00	\$0.00	\$0.00	Stonebridge Estates Master Assn
325 100 16 00	0.06	OSP	0.00	0.00	0.00	\$0.00	\$0.00	Stonebridge Estates Master Assn
325 100 17 00	0.02	OSP	0.00	0.00	0.00	\$0.00	\$0.00	Stonebridge Estates Master Assn
325 101 01 00	1.00	SFD	1.00	1.00	1.00	\$0.00	\$0.00	Moaveni Nilofar
325 101 02 00	1.00	SFD	1.00	1.00	1.00	\$0.00	\$0.00	Huynh Paul Dong&Hong Bich
325 101 03 00	1.00	SFD	1.00	1.00	1.00	\$0.00	\$0.00	Larsen Roger A li&Karina M
325 101 04 00	1.00	SFD	1.00	1.00	1.00	\$0.00	\$0.00	Siry John&Erica
325 101 05 00	1.00	SFD	1.00	1.00	1.00	\$0.00	\$0.00	Peterson James M&Kim S
325 101 06 00	1.00	SFD	1.00	1.00	1.00	\$0.00	\$0.00	Richardson Family Trust 08-30-07
325 101 07 00	1.00	SFD	1.00	1.00	1.00	\$0.00	\$0.00	Yang Jack C&Huynh Minh Thu N
325 101 08 00	0.17	OSP	0.00	0.00	0.00	\$0.00	\$0.00	Stonebridge Estates Master Assn
325 102 01 00	1.00	SFD	1.00	1.00	1.00	\$0.00	\$0.00	Manalo Antonio T&Carasig-Manalo Judy G
325 102 02 00	1.00	SFD	1.00	1.00	1.00	\$0.00	\$0.00	Wilson David P&Wolfgang-Wilson Kristi A
325 102 03 00	1.00	SFD	1.00	1.00	1.00	\$0.00	\$0.00	Lai Tung N&Lien Dang
325 102 04 00	1.00	SFD	1.00	1.00	1.00	\$0.00	\$0.00	Strojan Jason W&Kristin G
325 102 05 00	1.00	SFD	1.00	1.00	1.00	\$0.00	\$0.00	Ross Charles D&Mary A
325 102 06 00	1.00	SFD	1.00	1.00	1.00	\$0.00	\$0.00	Ko Fu Wen&Lo Yu-Chih
325 102 07 00	1.00	SFD	1.00	1.00	1.00	\$0.00	\$0.00	Bsaibes Camille K&Bsaibes Eva K
325 102 08 00	1.00	SFD	1.00	1.00	1.00	\$0.00	\$0.00	Seltzer Matthew D
325 102 09 00	1.00	SFD	1.00	1.00	1.00	\$0.00	\$0.00	Schellhase Stephanie M
325 102 10 00	1.00	SFD	1.00	1.00	1.00	\$0.00	\$0.00	Duggal Nakul&Soni Sonali
325 102 11 00	1.00	SFD	1.00	1.00	1.00	\$0.00	\$0.00	Storgard Chris M&Melinda S
325 102 12 00	1.00	SFD	1.00	1.00	1.00	\$0.00	\$0.00	Kaohu Scott&Annette Family Trust 06-18-01
325 102 13 00	1.00	SFD	1.00	1.00	1.00	\$0.00	\$0.00	Wortham Family Trust 11-01-04
325 102 14 00	1.00	SFD	1.00	1.00	1.00	\$0.00	\$0.00	Liu Daochun&Na
325 102 15 00	1.00	SFD	1.00	1.00	1.00	\$0.00	\$0.00	Rogers Bobby E Living Trust 10-16-07
325 102 16 00	1.00	SFD	1.00	1.00	1.00	\$0.00	\$0.00	Heilsberg Family 2005 Trust 12-15-05
325 102 17 00	1.00	SFD	1.00	1.00	1.00	\$0.00	\$0.00	Trehan Sameer
325 102 18 00	1.00	SFD	1.00	1.00	1.00	\$0.00	\$0.00	Bank Of America
325 102 19 00	0.02	OSP	0.00	0.00	0.00	\$0.00	\$0.00	Stonebridge Estates Master Assn
325 103 01 00	1.00	SFD	1.00	1.00	1.00	\$0.00	\$0.00	Haraden Scott J&Gietzen-Haraden Christina L
325 103 02 00	1.00	SFD	1.00	1.00	1.00	\$0.00	\$0.00	Neilio Michael P&Krause Deanna L
325 103 03 00	1.00	SFD	1.00	1.00	1.00	\$0.00	\$0.00	Saao Family Trust 05-23-07
325 103 04 00	1.00	SFD	1.00	1.00	1.00	\$0.00	\$0.00	Denny Jeffrey G&Karen B
325 103 05 00	1.00	SFD	1.00	1.00	1.00	\$0.00	\$0.00	Sproles Darren&Michel
325 103 06 00	1.00	SFD	1.00	1.00	1.00	\$0.00	\$0.00	Melnyk Adrian L&Sue M
325 103 07 00	1.00	SFD	1.00	1.00	1.00	\$0.00	\$0.00	Pham Tony Huy
325 103 08 00	1.00	SFD	1.00	1.00	1.00	\$0.00	\$0.00	Fishman Brandon M&Kelly L
325 103 09 00	1.00	SFD	1.00	1.00	1.00	\$0.00	\$0.00	Scanlon Patrick

EXHIBIT C - Assessment Roll (Fiscal Year 2013)
Rancho Encantada/Stonebridge Estates Maintenance Assessment District

Parcel Number	Acres/ Units ⁽¹⁾	Land Use ⁽²⁾	Assessment Factors		Total EBU's	Unit Cost (\$/EBU)	FY 2013 ⁽⁴⁾ Assessment	Owner Name
			Land Use ⁽²⁾	Benefit ⁽³⁾				
325 103 10 00	1.00	SFD	1.00	1.00	1.00	\$0.00	\$0.00	Phomsavanh Suk&Lany
325 103 11 00	1.00	SFD	1.00	1.00	1.00	\$0.00	\$0.00	Lee Chong Uk&Anna E Family Trust 10-04-05
325 103 12 00	1.00	SFD	1.00	1.00	1.00	\$0.00	\$0.00	Wittman Todd B&Sherri L Trust 10-18-02
325 103 13 00	1.00	SFD	1.00	1.00	1.00	\$0.00	\$0.00	Salmon Family Trust 01-23-09
325 103 14 00	1.00	SFD	1.00	1.00	1.00	\$0.00	\$0.00	Imas Alexander&Ludmila
325 103 15 00	1.00	SFD	1.00	1.00	1.00	\$0.00	\$0.00	Danielsen Duane M
325 103 16 00	1.00	SFD	1.00	1.00	1.00	\$0.00	\$0.00	Rakholia Ramesh M&Varsha R Trust 03-06-01
325 103 17 00	1.00	SFD	1.00	1.00	1.00	\$0.00	\$0.00	Knox Trust 07-19-04
325 103 18 00	1.00	SFD	1.00	1.00	1.00	\$0.00	\$0.00	Kramer Brian N&Jennifer A Revocable Living Trust
325 103 19 00	1.00	SFD	1.00	1.00	1.00	\$0.00	\$0.00	Nguyen Hoa Revocable Living Trust 06-06-07
325 103 20 00	1.00	SFD	1.00	1.00	1.00	\$0.00	\$0.00	Lee Family Trust 10-30-03
325 103 21 00	1.00	SFD	1.00	1.00	1.00	\$0.00	\$0.00	Raman V K&Vijaya K Revocable Living Trust 05-12-07
325 103 22 00	1.00	SFD	1.00	1.00	1.00	\$0.00	\$0.00	Ali Lisa S Family Trust 06-29-05
325 103 23 00	1.00	SFD	1.00	1.00	1.00	\$0.00	\$0.00	Sidhu Berinder S&Khushdeep K
325 103 24 00	0.27	OSP	0.00	0.00	0.00	\$0.00	\$0.00	Stonebridge Estates Master Assn
325 103 25 00	0.15	OSP	0.00	0.00	0.00	\$0.00	\$0.00	Stonebridge Estates Master Assn
325 103 26 00	0.06	OSP	0.00	0.00	0.00	\$0.00	\$0.00	Stonebridge Estates Master Assn
325 104 01 00	1.00	SFD	1.00	1.00	1.00	\$0.00	\$0.00	Campo Michael M&Phayvanh
325 104 02 00	1.00	SFD	1.00	1.00	1.00	\$0.00	\$0.00	Thompson Dan&Vicky Living Trust 03-30-00
325 104 03 00	1.00	SFD	1.00	1.00	1.00	\$0.00	\$0.00	Brodfehrer James S
325 104 04 00	1.00	SFD	1.00	1.00	1.00	\$0.00	\$0.00	Marchetti Robert L&Kathleen A
325 104 05 00	1.00	SFD	1.00	1.00	1.00	\$0.00	\$0.00	Lizura Joseph R&Tami W
325 104 06 00	1.00	SFD	1.00	1.00	1.00	\$0.00	\$0.00	Landau David A&Maria M Trs
325 104 07 00	1.00	SFD	1.00	1.00	1.00	\$0.00	\$0.00	Dabasinskas Michael R&Hilary T
325 104 08 00	1.00	SFD	1.00	1.00	1.00	\$0.00	\$0.00	Boles Family Trust 12-01-03
325 104 09 00	1.00	SFD	1.00	1.00	1.00	\$0.00	\$0.00	Salda Chad D&Annette D
325 104 10 00	1.00	SFD	1.00	1.00	1.00	\$0.00	\$0.00	Kmety Scott M
325 104 11 00	1.00	SFD	1.00	1.00	1.00	\$0.00	\$0.00	Voorhees Thomas G&Patricia R
325 104 12 00	1.00	SFD	1.00	1.00	1.00	\$0.00	\$0.00	Grandchildrens Trust 11-15-93
325 104 13 00	1.00	SFD	1.00	1.00	1.00	\$0.00	\$0.00	Korzinov Lev N&Irina V
325 104 14 00	1.00	SFD	1.00	1.00	1.00	\$0.00	\$0.00	Potente Anthony&Jocelyn Family Trust 03-08-01
325 104 15 00	1.00	SFD	1.00	1.00	1.00	\$0.00	\$0.00	Field Charles H Jr&Youngchu
325 104 16 00	1.00	SFD	1.00	1.00	1.00	\$0.00	\$0.00	Manzano Rogelio G&Ermadonna M 03-12-00
325 104 17 00	1.00	SFD	1.00	1.00	1.00	\$0.00	\$0.00	Jenkins Family Living Trust 02-04-09
325 104 18 00	1.00	SFD	1.00	1.00	1.00	\$0.00	\$0.00	Dang Family Trust 06-01-04
325 104 19 00	1.00	SFD	1.00	1.00	1.00	\$0.00	\$0.00	Sepeta William S&Maria T S
325 104 20 00	1.00	SFD	1.00	1.00	1.00	\$0.00	\$0.00	Sandhu Family Trust 01-26-06
325 104 21 00	1.00	SFD	1.00	1.00	1.00	\$0.00	\$0.00	Hamid Baqi A&Suria B
325 104 22 00	1.00	SFD	1.00	1.00	1.00	\$0.00	\$0.00	Shoff Carl C&Dianne R
325 104 23 00	6.24	OSP	0.00	0.00	0.00	\$0.00	\$0.00	Stonebridge Estates Master Assn
325 104 24 00	0.17	OSP	0.00	0.00	0.00	\$0.00	\$0.00	Sycamore Estates L L C
325 104 25 00	0.05	OSP	0.00	0.00	0.00	\$0.00	\$0.00	Stonebridge Estates Master Assn
325 104 26 00	0.11	OSP	0.00	0.00	0.00	\$0.00	\$0.00	Stonebridge Estates Master Assn
325 104 27 00	0.03	OSP	0.00	0.00	0.00	\$0.00	\$0.00	Stonebridge Estates Master Assn
325 110 01 00	14.60	OSP	0.00	0.00	0.00	\$0.00	\$0.00	Sycamore Estates L L C
325 110 02 00	117.52	OSP	0.00	0.00	0.00	\$0.00	\$0.00	Sycamore Estates L L C
325 110 03 00	63.86	OSP	0.00	0.00	0.00	\$0.00	\$0.00	Sycamore Estates L L C
325 110 12 00	0.73	OSP	0.00	0.00	0.00	\$0.00	\$0.00	City Of San Diego
325 120 01 00	1.00	SFD	1.00	1.00	1.00	\$0.00	\$0.00	Emara Salem&Shatanoufy Maii E
325 120 02 00	1.00	SFD	1.00	1.00	1.00	\$0.00	\$0.00	Shojaei Farbod&Vaziri Sepideh
325 120 03 00	1.00	SFD	1.00	1.00	1.00	\$0.00	\$0.00	Sao Hy&Wai
325 120 04 00	1.00	SFD	1.00	1.00	1.00	\$0.00	\$0.00	Komarov Grigoriy&Metelskaya Emma

EXHIBIT C - Assessment Roll (Fiscal Year 2013)
Rancho Encantada/Stonebridge Estates Maintenance Assessment District

Parcel Number	Acres/ Units ⁽¹⁾	Land Use ⁽²⁾	Assessment Factors		Total EBUs	Unit Cost (\$/Ebu)	FY 2013 ⁽⁴⁾ Assessment	Owner Name
			Land Use ⁽²⁾	Benefit ⁽³⁾				
325 120 05 00	1.00	SFD	1.00	1.00	1.00	\$0.00	\$0.00	Vo/Tran Family Trust 09-20-90
325 120 06 00	1.00	SFD	1.00	1.00	1.00	\$0.00	\$0.00	Collins Christopher J&Tracey L
325 120 07 00	1.00	SFD	1.00	1.00	1.00	\$0.00	\$0.00	Marvasti Masoud A&Farah R
325 120 08 00	1.00	SFD	1.00	1.00	1.00	\$0.00	\$0.00	Kunard Family Trust 05-19-09
325 120 09 00	1.00	SFD	1.00	1.00	1.00	\$0.00	\$0.00	Walden Dennis K&Karen L
325 120 10 00	1.00	SFD	1.00	1.00	1.00	\$0.00	\$0.00	Davis Billy E&Shaunie S
325 120 11 00	1.00	SFD	1.00	1.00	1.00	\$0.00	\$0.00	Ostadan Omead&Elizabeth
325 120 12 00	1.00	SFD	1.00	1.00	1.00	\$0.00	\$0.00	Boesel Robert W&Kathleen A
325 120 13 00	1.00	SFD	1.00	1.00	1.00	\$0.00	\$0.00	Manowitz Neal&Lizzette
325 120 14 00	1.00	SFD	1.00	1.00	1.00	\$0.00	\$0.00	Bajaj Vikas
325 120 15 00	1.00	SFD	1.00	1.00	1.00	\$0.00	\$0.00	Treitter Marc&Rowena
325 120 16 00	1.00	SFD	1.00	1.00	1.00	\$0.00	\$0.00	Singh Manvinder&Nenu
325 120 17 00	1.00	SFD	1.00	1.00	1.00	\$0.00	\$0.00	Townshend Peter N
325 120 18 00	1.00	SFD	1.00	1.00	1.00	\$0.00	\$0.00	Nguyen John Duc&Nha Uyen Thi
325 120 19 00	1.00	SFD	1.00	1.00	1.00	\$0.00	\$0.00	Hougen Murray L&Elizabeth L
325 120 20 00	1.00	SFD	1.00	1.00	1.00	\$0.00	\$0.00	Ta Kien Trung&Nguyen Kim Chi
325 120 21 00	1.00	SFD	1.00	1.00	1.00	\$0.00	\$0.00	Benson Larry P&Raylonda G
325 120 22 00	1.00	SFD	1.00	1.00	1.00	\$0.00	\$0.00	Rickel Scott&Robin
325 120 23 00	1.00	SFD	1.00	1.00	1.00	\$0.00	\$0.00	Williams Scott A&Cheryl
325 120 24 00	1.00	SFD	1.00	1.00	1.00	\$0.00	\$0.00	Emanuele Robert M&Monica L
325 120 25 00	1.00	SFD	1.00	1.00	1.00	\$0.00	\$0.00	Deroo Daniel B
325 120 26 00	1.00	SFD	1.00	1.00	1.00	\$0.00	\$0.00	Fabular Ronald T&Irma J L
325 120 27 00	1.00	SFD	1.00	1.00	1.00	\$0.00	\$0.00	Hacksell Uli A&Iris
325 120 28 00	1.00	SFD	1.00	1.00	1.00	\$0.00	\$0.00	Stack Robert N
325 120 29 00	1.00	SFD	1.00	1.00	1.00	\$0.00	\$0.00	Sen Cheng-Fo&Chen Ting-Yin Revocable 2003 Trust
325 120 30 00	1.00	SFD	1.00	1.00	1.00	\$0.00	\$0.00	Moy Phillip&Wang Jijuan
325 120 31 00	1.00	SFD	1.00	1.00	1.00	\$0.00	\$0.00	Zhang Xuejun&Dong Wei
325 120 32 00	1.00	SFD	1.00	1.00	1.00	\$0.00	\$0.00	Campbell Gregory S
325 120 33 00	1.00	SFD	1.00	1.00	1.00	\$0.00	\$0.00	Khawaja Omar M&Torres Lydia T
325 120 34 00	1.00	SFD	1.00	1.00	1.00	\$0.00	\$0.00	Hosalkar Harish&Hetal
325 120 35 00	1.00	SFD	1.00	1.00	1.00	\$0.00	\$0.00	Harris Family Trust 11-18-05
325 120 36 00	1.00	SFD	1.00	1.00	1.00	\$0.00	\$0.00	Cooper Stephen Jr
325 120 37 00	1.00	SFD	1.00	1.00	1.00	\$0.00	\$0.00	Anthony Scott&Honore
325 120 38 00	1.00	SFD	1.00	1.00	1.00	\$0.00	\$0.00	Fazen Living Trust 07-11-06
325 120 39 00	1.00	SFD	1.00	1.00	1.00	\$0.00	\$0.00	Cui Derrick R&Maybelline
325 120 40 00	1.00	SFD	1.00	1.00	1.00	\$0.00	\$0.00	Alexander James&Jennifer Revocable Trust 06-22-07
325 120 41 00	1.00	SFD	1.00	1.00	1.00	\$0.00	\$0.00	Pham Anthony Tai Q&Jessica Raye L
325 120 42 00	1.00	SFD	1.00	1.00	1.00	\$0.00	\$0.00	Martin David P&Amy K
325 120 43 00	1.00	SFD	1.00	1.00	1.00	\$0.00	\$0.00	Yaszay Burt&Susan K
325 120 44 00	1.00	SFD	1.00	1.00	1.00	\$0.00	\$0.00	Vandegrift Jon H&Dudek-Vandegrift Sharon A Family
325 120 45 00	1.00	SFD	1.00	1.00	1.00	\$0.00	\$0.00	Finnegan Sean F
325 120 46 00	1.00	SFD	1.00	1.00	1.00	\$0.00	\$0.00	Zubaty Robert J&Barbara M
325 120 47 00	1.00	SFD	1.00	1.00	1.00	\$0.00	\$0.00	Kim Hyun Wook&Shim Sun Hwa
325 120 48 00	1.00	SFD	1.00	1.00	1.00	\$0.00	\$0.00	Eads Family Trust 10-13-06
325 120 49 00	1.00	SFD	1.00	1.00	1.00	\$0.00	\$0.00	Hampton Allen D&Randi
325 120 50 00	1.00	SFD	1.00	1.00	1.00	\$0.00	\$0.00	Wang Family Trust 03-28-07
325 120 51 00	1.00	SFD	1.00	1.00	1.00	\$0.00	\$0.00	Nayyar Sameer&Ahuja Sonia
325 120 52 00	1.00	SFD	1.00	1.00	1.00	\$0.00	\$0.00	Mcmillan Tracy
325 120 53 00	1.00	SFD	1.00	1.00	1.00	\$0.00	\$0.00	Vargas Gustavo V&Yulexis L
325 120 54 00	0.01	OSP	0.00	0.00	0.00	\$0.00	\$0.00	Stonebridge Estates Master Assn
325 120 55 00	2.58	OSP	0.00	0.00	0.00	\$0.00	\$0.00	Sycamore Estates L L C
325 120 56 00	1.44	OSP	0.00	0.00	0.00	\$0.00	\$0.00	Sycamore Estates L L C

EXHIBIT C - Assessment Roll (Fiscal Year 2013)
Rancho Encantada/Stonebridge Estates Maintenance Assessment District

Parcel Number	Acres/ Units ⁽¹⁾	Land Use ⁽²⁾	Assessment Factors		Total EBU's	Unit Cost (\$/EBU)	FY 2013 ⁽⁴⁾ Assessment	Owner Name
			Land Use ⁽²⁾	Benefit ⁽³⁾				
325 120 57 00	2.13	OSP	0.00	0.00	0.00	\$0.00	\$0.00	Sycamore Estates L L C
325 120 58 00	1.22	OSP	0.00	0.00	0.00	\$0.00	\$0.00	Stonebridge Estates Master Assn
325 120 59 00	0.01	OSP	0.00	0.00	0.00	\$0.00	\$0.00	Stonebridge Estates Master Assn
325 120 60 00	0.98	OSP	0.00	0.00	0.00	\$0.00	\$0.00	Stonebridge Estates Master Assn
325 120 61 00	0.01	OSP	0.00	0.00	0.00	\$0.00	\$0.00	Stonebridge Estates Master Association
325 120 62 00	0.01	OSP	0.00	0.00	0.00	\$0.00	\$0.00	Stonebridge Estates Master Association
325 120 63 00	0.01	OSP	0.00	0.00	0.00	\$0.00	\$0.00	Stonebridge Estates Master Association
325 120 64 00	1.23	OSP	0.00	0.00	0.00	\$0.00	\$0.00	Stonebridge Estates Master Assn
325 121 01 00	1.00	SFD	1.00	1.00	1.00	\$0.00	\$0.00	Standard Pacific Corp
325 121 02 00	1.00	SFD	1.00	1.00	1.00	\$0.00	\$0.00	Standard Pacific Corp
325 121 03 00	1.00	SFD	1.00	1.00	1.00	\$0.00	\$0.00	Standard Pacific Corp
325 121 04 00	1.00	SFD	1.00	1.00	1.00	\$0.00	\$0.00	Standard Pacific Corp
325 121 05 00	1.00	SFD	1.00	1.00	1.00	\$0.00	\$0.00	Standard Pacific Corp
325 121 06 00	1.00	SFD	1.00	1.00	1.00	\$0.00	\$0.00	Standard Pacific Corp
325 121 07 00	1.00	SFD	1.00	1.00	1.00	\$0.00	\$0.00	Standard Pacific Corp
325 121 08 00	1.00	SFD	1.00	1.00	1.00	\$0.00	\$0.00	Standard Pacific Corp
325 121 09 00	1.00	SFD	1.00	1.00	1.00	\$0.00	\$0.00	Standard Pacific Corp
325 121 10 00	1.00	SFD	1.00	1.00	1.00	\$0.00	\$0.00	Standard Pacific Corp
325 121 11 00	1.00	SFD	1.00	1.00	1.00	\$0.00	\$0.00	Standard Pacific Corp
325 121 12 00	1.00	SFD	1.00	1.00	1.00	\$0.00	\$0.00	Standard Pacific Corp
325 121 14 00	1.00	SFD	1.00	1.00	1.00	\$0.00	\$0.00	Standard Pacific Corp
325 121 15 00	1.00	SFD	1.00	1.00	1.00	\$0.00	\$0.00	Standard Pacific Corp
325 121 16 00	1.00	SFD	1.00	1.00	1.00	\$0.00	\$0.00	Standard Pacific Corp
325 121 17 00	1.00	SFD	1.00	1.00	1.00	\$0.00	\$0.00	Standard Pacific Corp
325 121 18 00	1.00	SFD	1.00	1.00	1.00	\$0.00	\$0.00	Standard Pacific Corp
325 121 19 00	1.00	SFD	1.00	1.00	1.00	\$0.00	\$0.00	Standard Pacific Corp
325 121 20 00	1.00	SFD	1.00	1.00	1.00	\$0.00	\$0.00	Standard Pacific Corp
325 121 21 00	0.01	OSP	0.00	0.00	0.00	\$0.00	\$0.00	Stonebridge Estates Master Assn
325 121 22 00	0.01	OSP	0.00	0.00	0.00	\$0.00	\$0.00	Stonebridge Estates Master Assn
325 121 24 00	0.01	OSP	0.00	0.00	0.00	\$0.00	\$0.00	Stonebridge Estates Master Assn
325 121 25 00	0.01	OSP	0.00	0.00	0.00	\$0.00	\$0.00	Standard Pacific Corp
325 121 26 00	0.01	OSP	0.00	0.00	0.00	\$0.00	\$0.00	Standard Pacific Corp
325 121 27 00	1.00	SFD	1.00	1.00	1.00	\$0.00	\$0.00	Standard Pacific Corp
325 121 28 00	3.36	OSP	0.00	0.00	0.00	\$0.00	\$0.00	Sycamore Estates L L C
325 130 01 00	1.00	SFD	1.00	1.00	1.00	\$0.00	\$0.00	Lacoursiere Terry P&Daphne Y
325 130 02 00	1.00	SFD	1.00	1.00	1.00	\$0.00	\$0.00	Truong Danh&Yvonne Family Trust 04-10-11
325 130 03 00	1.00	SFD	1.00	1.00	1.00	\$0.00	\$0.00	Velazquez Jose G&Lisa
325 130 04 00	1.00	SFD	1.00	1.00	1.00	\$0.00	\$0.00	Linn Douglas B&Deborah A Family Trust 06-24-09
325 130 05 00	1.00	SFD	1.00	1.00	1.00	\$0.00	\$0.00	Pan Andrew&Julia Zhou
325 130 06 00	1.00	SFD	1.00	1.00	1.00	\$0.00	\$0.00	Chen Nan&Lu Wei
325 130 07 00	1.00	SFD	1.00	1.00	1.00	\$0.00	\$0.00	Ryan Luke P&Hom Xenia B
325 130 08 00	1.00	SFD	1.00	1.00	1.00	\$0.00	\$0.00	Wang Weibin Revocable Trust 11-23-05
325 130 09 00	1.00	SFD	1.00	1.00	1.00	\$0.00	\$0.00	Heung Family Trust 09-14-04
325 130 10 00	1.00	SFD	1.00	1.00	1.00	\$0.00	\$0.00	Widjaja Donny&Hsiao Hsi-Ju
325 130 11 00	1.00	SFD	1.00	1.00	1.00	\$0.00	\$0.00	Yang Jinghui&Liang Li
325 130 12 00	1.00	SFD	1.00	1.00	1.00	\$0.00	\$0.00	Fermanian Christopher A&Laura E
325 130 13 00	1.00	SFD	1.00	1.00	1.00	\$0.00	\$0.00	Chang Ta-Peng&Hsu-Yi Lai
325 130 14 00	1.00	SFD	1.00	1.00	1.00	\$0.00	\$0.00	Samurai Trust 12-27-05
325 130 15 00	1.00	SFD	1.00	1.00	1.00	\$0.00	\$0.00	Kuykendall John B
325 130 16 00	1.00	SFD	1.00	1.00	1.00	\$0.00	\$0.00	Hackim Family Trust 09-27-01
325 130 17 00	1.00	SFD	1.00	1.00	1.00	\$0.00	\$0.00	Brand Adam&Carina
325 130 18 00	1.00	SFD	1.00	1.00	1.00	\$0.00	\$0.00	Luu Son Ngoc&Nguyen Victoria H

EXHIBIT C - Assessment Roll (Fiscal Year 2013)
Rancho Encantada/Stonebridge Estates Maintenance Assessment District

Parcel Number	Acres/ Units ⁽¹⁾	Land Use ⁽²⁾	Assessment Factors		Total EBU's	Unit Cost (\$/EBU)	FY 2013 ⁽⁴⁾ Assessment	Owner Name
			Land Use ⁽²⁾	Benefit ⁽³⁾				
325 130 19 00	1.00	SFD	1.00	1.00	1.00	\$0.00	\$0.00	Wittman John&Maryjane
325 130 20 00	1.00	SFD	1.00	1.00	1.00	\$0.00	\$0.00	Pileggi Joseph J&Dana M
325 130 21 00	1.00	SFD	1.00	1.00	1.00	\$0.00	\$0.00	Trieu Thuan&Nguyen Kimberly
325 130 22 00	1.00	SFD	1.00	1.00	1.00	\$0.00	\$0.00	Calinisan Leonor
325 130 23 00	1.00	SFD	1.00	1.00	1.00	\$0.00	\$0.00	Carreon Alfredo B&Bella B
325 130 24 00	1.00	SFD	1.00	1.00	1.00	\$0.00	\$0.00	Parker Larry&Jennifer D
325 130 25 00	1.00	SFD	1.00	1.00	1.00	\$0.00	\$0.00	Asaro Guy L&Chelsea R
325 130 26 00	1.00	SFD	1.00	1.00	1.00	\$0.00	\$0.00	Morris Shawn D
325 130 27 00	1.00	SFD	1.00	1.00	1.00	\$0.00	\$0.00	Solomon Darren&Fricker Deborah
325 130 28 00	1.00	SFD	1.00	1.00	1.00	\$0.00	\$0.00	Huynh Dung V&Trang T
325 130 29 00	1.00	SFD	1.00	1.00	1.00	\$0.00	\$0.00	Tsai Juitien&Minshen
325 130 30 00	1.00	SFD	1.00	1.00	1.00	\$0.00	\$0.00	Lucero Ramon E&Adriana F
325 130 31 00	1.00	SFD	1.00	1.00	1.00	\$0.00	\$0.00	Jagannath Gopinath&Vijaya
325 130 32 00	1.00	SFD	1.00	1.00	1.00	\$0.00	\$0.00	Devries Henry J&Zenaida R
325 130 33 00	1.00	SFD	1.00	1.00	1.00	\$0.00	\$0.00	Tiamzon Family Trust 01-21-10
325 130 34 00	1.00	SFD	1.00	1.00	1.00	\$0.00	\$0.00	Cristobal Nenita L
325 130 35 00	1.00	SFD	1.00	1.00	1.00	\$0.00	\$0.00	Patel Shimman A&Neesa B
325 130 36 00	1.00	SFD	1.00	1.00	1.00	\$0.00	\$0.00	Mantero Luis E M&Demarsano Martha M H
325 130 37 00	1.00	SFD	1.00	1.00	1.00	\$0.00	\$0.00	Mccree Family Trust 19-08-10
325 130 38 00	1.00	SFD	1.00	1.00	1.00	\$0.00	\$0.00	Mullaguru Naidu S&Lakshmi
325 130 39 00	1.00	SFD	1.00	1.00	1.00	\$0.00	\$0.00	Cao Xia
325 130 40 00	1.00	SFD	1.00	1.00	1.00	\$0.00	\$0.00	Fermanian Timothy&Katie
325 130 41 00	1.00	SFD	1.00	1.00	1.00	\$0.00	\$0.00	Tran Man Chi
325 130 42 00	1.00	SFD	1.00	1.00	1.00	\$0.00	\$0.00	Spilotro Michael&Jodi M
325 130 43 00	1.00	SFD	1.00	1.00	1.00	\$0.00	\$0.00	Woodell Melinda J
325 130 44 00	1.00	SFD	1.00	1.00	1.00	\$0.00	\$0.00	Tseng Jerry T&Tsai Rosie
325 130 45 00	1.00	SFD	1.00	1.00	1.00	\$0.00	\$0.00	Wei Henry Ming-Chung&Elizabeth K
325 130 46 00	1.00	SFD	1.00	1.00	1.00	\$0.00	\$0.00	Chao Ron&Zhou Lijia
325 130 47 00	1.00	SFD	1.00	1.00	1.00	\$0.00	\$0.00	Morris Stacy L
325 130 48 00	1.00	SFD	1.00	1.00	1.00	\$0.00	\$0.00	Pasumarthi Kesava&Surekha
325 130 49 00	1.00	SFD	1.00	1.00	1.00	\$0.00	\$0.00	Barrie Elizabeth A
325 130 50 00	1.00	SFD	1.00	1.00	1.00	\$0.00	\$0.00	Kunz Ronald J&Nancy G
325 130 51 00	1.00	SFD	1.00	1.00	1.00	\$0.00	\$0.00	Valdez Ulysses L&Fideliza N
325 130 52 00	1.00	SFD	1.00	1.00	1.00	\$0.00	\$0.00	Noble Richard T Jr&Barbara A
325 130 53 00	1.00	SFD	1.00	1.00	1.00	\$0.00	\$0.00	Austin Kimberly A (Dp)
325 130 54 00	1.00	SFD	1.00	1.00	1.00	\$0.00	\$0.00	Pinto Sergio&Lodhi Saima
325 130 55 00	1.00	SFD	1.00	1.00	1.00	\$0.00	\$0.00	Ballesteros Douglas A&Ashley M
325 130 56 00	1.00	SFD	1.00	1.00	1.00	\$0.00	\$0.00	Phan Dave V&Ann L
325 130 57 00	1.00	SFD	1.00	1.00	1.00	\$0.00	\$0.00	Khan Safi U&Nadya
325 130 58 00	1.00	SFD	1.00	1.00	1.00	\$0.00	\$0.00	Ganev Family Trust 04-10-09
325 130 59 00	1.00	SFD	1.00	1.00	1.00	\$0.00	\$0.00	Wyld Jeremy A&Melara Claudia L
325 130 60 00	1.00	SFD	1.00	1.00	1.00	\$0.00	\$0.00	Onyegbule Herbert&Patience 2007 Trust 05-15-08
325 130 61 00	1.00	SFD	1.00	1.00	1.00	\$0.00	\$0.00	Pipponniemi Ismo A&Nousiainen Iris L
325 130 62 00	0.74	OSP	0.00	0.00	0.00	\$0.00	\$0.00	Stonebridge Estates Master Assn
325 130 63 00	0.01	OSP	0.00	0.00	0.00	\$0.00	\$0.00	Stonebridge Estates Master Assn
325 130 64 00	0.01	OSP	0.00	0.00	0.00	\$0.00	\$0.00	Stonebridge Estates Master Assn
325 130 65 00	6.54	OSP	0.00	0.00	0.00	\$0.00	\$0.00	Stonebridge Estates Master Assn
325 130 66 00	0.01	OSP	0.00	0.00	0.00	\$0.00	\$0.00	Stonebridge Estates Master Assn
325 130 67 00	0.01	OSP	0.00	0.00	0.00	\$0.00	\$0.00	Stonebridge Estate Master Assn
325 130 68 00	0.01	OSP	0.00	0.00	0.00	\$0.00	\$0.00	Stonebridge Estates Master Association
325 130 69 00	0.01	OSP	0.00	0.00	0.00	\$0.00	\$0.00	Stonebridge Estates Master Assn
325 130 70 00	0.01	OSP	0.00	0.00	0.00	\$0.00	\$0.00	Stonebridge Estates Master Assn

EXHIBIT C - Assessment Roll (Fiscal Year 2013)
Rancho Encantada/Stonebridge Estates Maintenance Assessment District

Parcel Number	Acres/ Units ⁽¹⁾	Land Use ⁽²⁾	Assessment Factors		Total EBU's	Unit Cost (\$/EBU)	FY 2013 ⁽⁴⁾ Assessment	Owner Name
			Land Use ⁽²⁾	Benefit ⁽³⁾				
325 130 71 00	0.01	OSP	0.00	0.00	0.00	\$0.00	\$0.00	Stonebridge Estates Master Assn
325 130 72 00	0.01	OSP	0.00	0.00	0.00	\$0.00	\$0.00	Stonebridge Estates Master Assn
325 131 01 00	1.00	SFD	1.00	1.00	1.00	\$0.00	\$0.00	Standard Pacific Corp
325 131 02 00	1.00	SFD	1.00	1.00	1.00	\$0.00	\$0.00	Standard Pacific Corp
325 131 03 00	1.00	SFD	1.00	1.00	1.00	\$0.00	\$0.00	Standard Pacific Corp
325 131 04 00	1.00	SFD	1.00	1.00	1.00	\$0.00	\$0.00	Standard Pacific Corp
325 131 05 00	1.00	SFD	1.00	1.00	1.00	\$0.00	\$0.00	Standard Pacific Corp
325 131 06 00	1.00	SFD	1.00	1.00	1.00	\$0.00	\$0.00	Standard Pacific Corp
325 131 07 00	1.00	SFD	1.00	1.00	1.00	\$0.00	\$0.00	Standard Pacific Corp
325 131 08 00	1.00	SFD	1.00	1.00	1.00	\$0.00	\$0.00	Standard Pacific Corp
325 131 16 00	1.00	SFD	1.00	1.00	1.00	\$0.00	\$0.00	Standard Pacific Corp
325 131 17 00	1.00	SFD	1.00	1.00	1.00	\$0.00	\$0.00	Standard Pacific Corp
325 131 18 00	1.00	SFD	1.00	1.00	1.00	\$0.00	\$0.00	Standard Pacific Corp
325 131 19 00	1.00	SFD	1.00	1.00	1.00	\$0.00	\$0.00	Standard Pacific Corp
325 131 20 00	1.00	SFD	1.00	1.00	1.00	\$0.00	\$0.00	Standard Pacific Corp
325 131 21 00	1.00	SFD	1.00	1.00	1.00	\$0.00	\$0.00	Standard Pacific Corp
325 131 22 00	1.00	SFD	1.00	1.00	1.00	\$0.00	\$0.00	Standard Pacific Corp
325 131 23 00	1.00	SFD	1.00	1.00	1.00	\$0.00	\$0.00	Standard Pacific Corp
325 131 24 00	1.00	SFD	1.00	1.00	1.00	\$0.00	\$0.00	Standard Pacific Corp
325 131 25 00	1.00	SFD	1.00	1.00	1.00	\$0.00	\$0.00	Standard Pacific Corp
325 131 26 00	1.00	SFD	1.00	1.00	1.00	\$0.00	\$0.00	Standard Pacific Corp
325 131 27 00	1.00	SFD	1.00	1.00	1.00	\$0.00	\$0.00	Standard Pacific Corp
325 131 28 00	0.01	OSP	0.00	0.00	0.00	\$0.00	\$0.00	Standard Pacific Corp
325 131 29 00	0.01	OSP	0.00	0.00	0.00	\$0.00	\$0.00	Sycamore Estates L L C
325 131 30 00	0.01	OSP	0.00	0.00	0.00	\$0.00	\$0.00	Standard Pacific Corp
325 131 31 00	0.01	OSP	0.00	0.00	0.00	\$0.00	\$0.00	Standard Pacific Corp
325 131 33 00	0.01	OSP	0.00	0.00	0.00	\$0.00	\$0.00	Standard Pacific Corp
325 131 34 00	1.00	SFD	1.00	1.00	1.00	\$0.00	\$0.00	Standard Pacific Corp
325 131 35 00	1.00	SFD	1.00	1.00	1.00	\$0.00	\$0.00	Standard Pacific Corp
325 131 36 00	1.00	SFD	1.00	1.00	1.00	\$0.00	\$0.00	Standard Pacific Corp
325 131 37 00	1.00	SFD	1.00	1.00	1.00	\$0.00	\$0.00	Standard Pacific Corp
325 131 38 00	1.00	SFD	1.00	1.00	1.00	\$0.00	\$0.00	Standard Pacific Corp
325 131 39 00	1.00	SFD	1.00	1.00	1.00	\$0.00	\$0.00	Standard Pacific Corp
325 131 40 00	1.00	SFD	1.00	1.00	1.00	\$0.00	\$0.00	Standard Pacific Corp
325 131 41 00	7.61	OSP	0.00	0.00	0.00	\$0.00	\$0.00	Sycamore Estates L L C
325 140 01 00	1.00	SFD	1.00	1.00	1.00	\$0.00	\$0.00	Rahmani Babak&Elham
325 140 02 00	1.00	SFD	1.00	1.00	1.00	\$0.00	\$0.00	Szabo Christopher&Kaczanowski Tania
325 140 03 00	1.00	SFD	1.00	1.00	1.00	\$0.00	\$0.00	Datta Family Trust 08-02-00
325 140 04 00	1.00	SFD	1.00	1.00	1.00	\$0.00	\$0.00	Kappel David
325 140 05 00	1.00	SFD	1.00	1.00	1.00	\$0.00	\$0.00	Haggenmiller Todd&Karen
325 140 06 00	1.00	SFD	1.00	1.00	1.00	\$0.00	\$0.00	Schulte Family Trust 12-19-97
325 140 07 00	1.00	SFD	1.00	1.00	1.00	\$0.00	\$0.00	Silva Franklin K&Norma J
325 140 08 00	1.00	SFD	1.00	1.00	1.00	\$0.00	\$0.00	Geary Jon&Siu
325 140 09 00	1.00	SFD	1.00	1.00	1.00	\$0.00	\$0.00	Hawkey Charles&Susan J
325 140 10 00	1.00	SFD	1.00	1.00	1.00	\$0.00	\$0.00	Medeiros Chris R&Christina D Trust 03-09-89
325 140 11 00	1.00	SFD	1.00	1.00	1.00	\$0.00	\$0.00	Eric&Aimee Family 2010 Trust
325 140 12 00	1.00	SFD	1.00	1.00	1.00	\$0.00	\$0.00	Wojtysiak Martin J&Tina M
325 140 13 00	1.00	SFD	1.00	1.00	1.00	\$0.00	\$0.00	Elliott Alan T&Carolyn P
325 140 14 00	1.00	SFD	1.00	1.00	1.00	\$0.00	\$0.00	Cults Shano&Aimee
325 140 15 00	1.00	SFD	1.00	1.00	1.00	\$0.00	\$0.00	Yong Paul H&Carol S Family Trust 07-12-11
325 140 16 00	1.00	SFD	1.00	1.00	1.00	\$0.00	\$0.00	Nalbandian Paul&Valerie A
325 140 17 00	1.00	SFD	1.00	1.00	1.00	\$0.00	\$0.00	Stallings Eric A&Muriel

EXHIBIT C - Assessment Roll (Fiscal Year 2013)
Rancho Encantada/Stonebridge Estates Maintenance Assessment District

Parcel Number	Acres/ Units ⁽¹⁾	Land Use ⁽²⁾	Assessment Factors		Total EBU's	Unit Cost (\$/EBU)	FY 2013 ⁽⁴⁾ Assessment	Owner Name
			Land Use ⁽²⁾	Benefit ⁽³⁾				
325 140 18 00	1.00	SFD	1.00	1.00	1.00	\$0.00	\$0.00	Chavez Juan&Julie
325 140 19 00	1.00	SFD	1.00	1.00	1.00	\$0.00	\$0.00	Greenblatt Sam
325 140 20 00	1.00	SFD	1.00	1.00	1.00	\$0.00	\$0.00	Hymes Camille A&John L
325 140 21 00	1.00	SFD	1.00	1.00	1.00	\$0.00	\$0.00	Brackman David&Anna Family Trust 03-27-07
325 140 22 00	1.00	SFD	1.00	1.00	1.00	\$0.00	\$0.00	Bley Shannon
325 140 23 00	1.00	SFD	1.00	1.00	1.00	\$0.00	\$0.00	Loftus Kevin M&Tara L
325 140 24 00	1.00	SFD	1.00	1.00	1.00	\$0.00	\$0.00	Smedley Randolph M Jr&Todd Marque D
325 140 25 00	1.00	SFD	1.00	1.00	1.00	\$0.00	\$0.00	Kopenhaver John W&Celia V
325 140 26 00	1.00	SFD	1.00	1.00	1.00	\$0.00	\$0.00	Alonso Louis&Jennifer
325 140 27 00	1.00	SFD	1.00	1.00	1.00	\$0.00	\$0.00	Behan Dominic&Gaynor
325 140 28 00	1.00	SFD	1.00	1.00	1.00	\$0.00	\$0.00	Simmons Arlis J
325 140 29 00	1.00	SFD	1.00	1.00	1.00	\$0.00	\$0.00	Akbar Rahim&Arin
325 140 30 00	1.00	SFD	1.00	1.00	1.00	\$0.00	\$0.00	Winchenbach Brian R&Jessica A
325 140 31 00	1.00	SFD	1.00	1.00	1.00	\$0.00	\$0.00	Connor Kenneth F&Judith D
325 140 32 00	1.00	SFD	1.00	1.00	1.00	\$0.00	\$0.00	Scallon Hubert J&Teresa N
325 140 33 00	1.00	SFD	1.00	1.00	1.00	\$0.00	\$0.00	Subramani Dinesh&Shinde Gitanjali
325 140 34 00	1.00	SFD	1.00	1.00	1.00	\$0.00	\$0.00	Murray Jane A
325 140 35 00	1.00	SFD	1.00	1.00	1.00	\$0.00	\$0.00	Staples Michael J&Cynthia L
325 140 36 00	1.00	SFD	1.00	1.00	1.00	\$0.00	\$0.00	Fountain Trust 12-07-06
325 140 37 00	1.00	SFD	1.00	1.00	1.00	\$0.00	\$0.00	Lu Lin&Jin Kai
325 140 38 00	1.00	SFD	1.00	1.00	1.00	\$0.00	\$0.00	Moyer Trenton E&Casandra B
325 140 39 00	1.00	SFD	1.00	1.00	1.00	\$0.00	\$0.00	Kare Family Trust 12-19-08
325 140 40 00	1.00	SFD	1.00	1.00	1.00	\$0.00	\$0.00	Desilva Family 2005 Trust 07-27-05
325 140 41 00	1.00	SFD	1.00	1.00	1.00	\$0.00	\$0.00	Limcolioc Jerald&Luu Linda
325 140 42 00	1.00	SFD	1.00	1.00	1.00	\$0.00	\$0.00	Duke Eric V&Le Loan N
325 140 43 00	1.00	SFD	1.00	1.00	1.00	\$0.00	\$0.00	Patrico Joseph N&Lisa
325 140 44 00	1.00	SFD	1.00	1.00	1.00	\$0.00	\$0.00	Hernandez Nefi
325 140 45 00	1.00	SFD	1.00	1.00	1.00	\$0.00	\$0.00	Kwan Paul C&Melissa A
325 140 46 00	1.00	SFD	1.00	1.00	1.00	\$0.00	\$0.00	Price Jennifer W Trust 11-04-11
325 140 47 00	1.00	SFD	1.00	1.00	1.00	\$0.00	\$0.00	Kaypour Babak&Behnaz
325 140 48 00	1.00	SFD	1.00	1.00	1.00	\$0.00	\$0.00	Nockerts Michael R
325 140 49 00	2.05	OSP	0.00	0.00	0.00	\$0.00	\$0.00	Stonebridge Estates Master Assn
325 140 50 00	7.85	OSP	0.00	0.00	0.00	\$0.00	\$0.00	Stonebridge Estates Master Assn
325 140 51 00	0.01	OSP	0.00	0.00	0.00	\$0.00	\$0.00	Stonebridge Estates Master Association
325 140 52 00	0.01	OSP	0.00	0.00	0.00	\$0.00	\$0.00	Stonebridge Estates Master Assn
325 140 53 00	0.01	OSP	0.00	0.00	0.00	\$0.00	\$0.00	Stonebridge Estates Master Assn
325 140 54 00	0.01	OSP	0.00	0.00	0.00	\$0.00	\$0.00	Stonebridge Estates Master Assn
325 150 01 00	1.00	SFD	1.00	1.00	1.00	\$0.00	\$0.00	Toll Ca Xix L P
325 150 02 00	1.00	SFD	1.00	1.00	1.00	\$0.00	\$0.00	Toll Ca Xix L P
325 150 03 00	1.00	SFD	1.00	1.00	1.00	\$0.00	\$0.00	Toll Ca Xix L P
325 150 04 00	1.00	SFD	1.00	1.00	1.00	\$0.00	\$0.00	Toll Ca Xix L P
325 150 05 00	1.00	SFD	1.00	1.00	1.00	\$0.00	\$0.00	Toll Ca Xix L P
325 150 06 00	1.00	SFD	1.00	1.00	1.00	\$0.00	\$0.00	Toll Ca Xix L P
325 150 07 00	1.00	SFD	1.00	1.00	1.00	\$0.00	\$0.00	Toll Ca Xix L P
325 150 08 00	1.00	SFD	1.00	1.00	1.00	\$0.00	\$0.00	Toll Ca Xix L P
325 150 09 00	1.00	SFD	1.00	1.00	1.00	\$0.00	\$0.00	Toll Ca Xix L P
325 150 10 00	1.00	SFD	1.00	1.00	1.00	\$0.00	\$0.00	Toll Ca Xix L P
325 150 11 00	1.00	SFD	1.00	1.00	1.00	\$0.00	\$0.00	Toll Ca Xix L P
325 150 12 00	1.00	SFD	1.00	1.00	1.00	\$0.00	\$0.00	Toll Ca Xix L P
325 150 13 00	1.00	SFD	1.00	1.00	1.00	\$0.00	\$0.00	Toll Ca Xix L P
325 150 14 00	1.00	SFD	1.00	1.00	1.00	\$0.00	\$0.00	Toll Ca Xix L P
325 150 15 00	1.00	SFD	1.00	1.00	1.00	\$0.00	\$0.00	Toll Ca Xix L P

EXHIBIT C - Assessment Roll (Fiscal Year 2013)
Rancho Encantada/Stonebridge Estates Maintenance Assessment District

Parcel Number	Acres/ Units ⁽¹⁾	Land Use ⁽²⁾	Assessment Factors		Total EBU's	Unit Cost (\$/EBU)	FY 2013 ⁽⁴⁾ Assessment	Owner Name
			Land Use ⁽²⁾	Benefit ⁽³⁾				
325 150 16 00	1.00	SFD	1.00	1.00	1.00	\$0.00	\$0.00	Toll Ca Xix L P
325 150 17 00	1.00	SFD	1.00	1.00	1.00	\$0.00	\$0.00	Toll Ca Xix L P
325 150 18 00	1.00	SFD	1.00	1.00	1.00	\$0.00	\$0.00	Toll Ca Xix L P
325 150 19 00	1.00	SFD	1.00	1.00	1.00	\$0.00	\$0.00	Toll Ca Xix L P
325 150 20 00	1.00	SFD	1.00	1.00	1.00	\$0.00	\$0.00	Toll Ca Xix L P
325 150 21 00	1.00	SFD	1.00	1.00	1.00	\$0.00	\$0.00	Toll Ca Xix L P
325 150 22 00	1.00	SFD	1.00	1.00	1.00	\$0.00	\$0.00	Toll Ca Xix L P
325 150 23 00	1.00	SFD	1.00	1.00	1.00	\$0.00	\$0.00	Toll Ca Xix L P
325 150 24 00	1.00	SFD	1.00	1.00	1.00	\$0.00	\$0.00	Toll Ca Xix L P
325 150 25 00	1.00	SFD	1.00	1.00	1.00	\$0.00	\$0.00	Toll Ca Xix L P
325 150 26 00	1.00	SFD	1.00	1.00	1.00	\$0.00	\$0.00	Toll Ca Xix L P
325 150 27 00	1.00	SFD	1.00	1.00	1.00	\$0.00	\$0.00	Toll Ca Xix L P
325 150 28 00	1.00	SFD	1.00	1.00	1.00	\$0.00	\$0.00	Toll Ca Xix L P
325 150 29 00	1.00	SFD	1.00	1.00	1.00	\$0.00	\$0.00	Toll Ca Xix L P
325 150 30 00	1.00	SFD	1.00	1.00	1.00	\$0.00	\$0.00	Toll Ca Xix L P
325 150 31 00	1.00	SFD	1.00	1.00	1.00	\$0.00	\$0.00	Toll Ca Xix L P
325 150 32 00	1.00	SFD	1.00	1.00	1.00	\$0.00	\$0.00	Toll Ca Xix L P
325 150 33 00	1.00	SFD	1.00	1.00	1.00	\$0.00	\$0.00	Toll Ca Xix L P
325 150 34 00	1.00	SFD	1.00	1.00	1.00	\$0.00	\$0.00	Toll Ca Xix L P
325 150 35 00	1.00	SFD	1.00	1.00	1.00	\$0.00	\$0.00	Toll Ca Xix L P
325 150 36 00	1.00	SFD	1.00	1.00	1.00	\$0.00	\$0.00	Toll Ca Xix L P
325 150 37 00	1.00	SFD	1.00	1.00	1.00	\$0.00	\$0.00	Toll Ca Xix L P
325 150 38 00	1.00	SFD	1.00	1.00	1.00	\$0.00	\$0.00	Toll Ca Xix L P
325 150 39 00	1.00	SFD	1.00	1.00	1.00	\$0.00	\$0.00	Toll Ca Xix L P
325 150 40 00	1.00	SFD	1.00	1.00	1.00	\$0.00	\$0.00	Toll Ca Xix L P
325 150 41 00	1.00	SFD	1.00	1.00	1.00	\$0.00	\$0.00	Toll Ca Xix L P
325 150 42 00	1.00	SFD	1.00	1.00	1.00	\$0.00	\$0.00	Toll Ca Xix L P
325 150 43 00	1.00	SFD	1.00	1.00	1.00	\$0.00	\$0.00	Toll Ca Xix L P
325 150 44 00	1.00	SFD	1.00	1.00	1.00	\$0.00	\$0.00	Toll Ca Xix L P
325 150 45 00	1.00	SFD	1.00	1.00	1.00	\$0.00	\$0.00	Toll Ca Xix L P
325 150 46 00	1.00	SFD	1.00	1.00	1.00	\$0.00	\$0.00	Toll Ca Xix L P
325 150 47 00	1.00	SFD	1.00	1.00	1.00	\$0.00	\$0.00	Toll Ca Xix L P
325 150 48 00	1.00	SFD	1.00	1.00	1.00	\$0.00	\$0.00	Toll Ca Xix L P
325 150 49 00	1.00	SFD	1.00	1.00	1.00	\$0.00	\$0.00	Toll Ca Xix L P
325 150 50 00	1.00	SFD	1.00	1.00	1.00	\$0.00	\$0.00	Toll Ca Xix L P
325 150 51 00	1.00	SFD	1.00	1.00	1.00	\$0.00	\$0.00	Toll Ca Xix L P
325 150 52 00	1.00	SFD	1.00	1.00	1.00	\$0.00	\$0.00	Toll Ca Xix L P
325 150 53 00	1.00	SFD	1.00	1.00	1.00	\$0.00	\$0.00	Toll Ca Xix L P
325 150 54 00	1.00	SFD	1.00	1.00	1.00	\$0.00	\$0.00	Toll Ca Xix L P
325 150 55 00	1.00	SFD	1.00	1.00	1.00	\$0.00	\$0.00	Toll Ca Xix L P
325 150 56 00	1.00	SFD	1.00	1.00	1.00	\$0.00	\$0.00	Toll Ca Xix L P
325 150 57 00	1.00	SFD	1.00	1.00	1.00	\$0.00	\$0.00	Toll Ca Xix L P
325 150 58 00	1.00	SFD	1.00	1.00	1.00	\$0.00	\$0.00	Toll Ca Xix L P
325 150 59 00	1.00	SFD	1.00	1.00	1.00	\$0.00	\$0.00	Toll Ca Xix L P
325 150 60 00	1.00	SFD	1.00	1.00	1.00	\$0.00	\$0.00	Toll Ca Xix L P
325 150 61 00	1.00	SFD	1.00	1.00	1.00	\$0.00	\$0.00	Toll Ca Xix L P
325 150 62 00	1.00	SFD	1.00	1.00	1.00	\$0.00	\$0.00	Toll Ca Xix L P
325 150 63 00	1.00	SFD	1.00	1.00	1.00	\$0.00	\$0.00	Toll Ca Xix L P
325 150 64 00	1.00	SFD	1.00	1.00	1.00	\$0.00	\$0.00	Toll Ca Xix L P
325 150 65 00	1.00	SFD	1.00	1.00	1.00	\$0.00	\$0.00	Toll Ca Xix L P
325 150 66 00	1.00	SFD	1.00	1.00	1.00	\$0.00	\$0.00	Toll Ca Xix L P
325 150 67 00	1.00	SFD	1.00	1.00	1.00	\$0.00	\$0.00	Toll Ca Xix L P

EXHIBIT C - Assessment Roll (Fiscal Year 2013)
Rancho Encantada/Stonebridge Estates Maintenance Assessment District

Parcel Number	Acres/ Units ⁽¹⁾	Land Use ⁽²⁾	Assessment Factors		Total EBU's	Unit Cost (\$/EBU)	FY 2013 ⁽⁴⁾ Assessment	Owner Name
			Land Use ⁽²⁾	Benefit ⁽³⁾				
325 150 68 00	1.00	SFD	1.00	1.00	1.00	\$0.00	\$0.00	Toll Ca Xix L P
325 150 69 00	1.00	SFD	1.00	1.00	1.00	\$0.00	\$0.00	Toll Ca Xix L P
325 150 70 00	1.00	SFD	1.00	1.00	1.00	\$0.00	\$0.00	Toll Ca Xix L P
325 150 71 00	1.00	SFD	1.00	1.00	1.00	\$0.00	\$0.00	Toll Ca Xix L P
325 150 72 00	9.66	OSP	0.00	0.00	0.00	\$0.00	\$0.00	Sycamore Estates L L C
325 150 73 00	0.01	OSP	0.00	0.00	0.00	\$0.00	\$0.00	Toll Ca Xix L P
325 150 74 00	0.01	OSP	0.00	0.00	0.00	\$0.00	\$0.00	Toll Ca Xix L P
325 150 75 00	0.01	OSP	0.00	0.00	0.00	\$0.00	\$0.00	Toll Ca Xix L P
325 150 76 00	0.01	OSP	0.00	0.00	0.00	\$0.00	\$0.00	Toll Ca Xix L P
325 150 77 00	0.01	OSP	0.00	0.00	0.00	\$0.00	\$0.00	Toll Ca Xix L P
325 150 78 00	0.01	OSP	0.00	0.00	0.00	\$0.00	\$0.00	Toll Ca Xix L P
325 150 79 00	0.01	OSP	0.00	0.00	0.00	\$0.00	\$0.00	Toll Ca Xix L P
325 150 80 00	0.01	OSP	0.00	0.00	0.00	\$0.00	\$0.00	Toll Ca Xix L P
325 150 81 00	0.01	OSP	0.00	0.00	0.00	\$0.00	\$0.00	Toll Ca Xix L P
325 160 01 00	1.00	SFD	1.00	1.00	1.00	\$0.00	\$0.00	Cornerstone At Stonebridge Estates L P
325 160 02 00	1.00	SFD	1.00	1.00	1.00	\$0.00	\$0.00	Li Xueqi
325 160 03 00	1.00	SFD	1.00	1.00	1.00	\$0.00	\$0.00	Cornerstone At Stonebridge Ests L P
325 160 04 00	1.00	SFD	1.00	1.00	1.00	\$0.00	\$0.00	Cornerstone At Stonebridge Ests L P
325 160 05 00	1.00	SFD	1.00	1.00	1.00	\$0.00	\$0.00	Cornerstone At Stonebridge Ests L P
325 160 06 00	1.00	SFD	1.00	1.00	1.00	\$0.00	\$0.00	Julien Robert K&Darlene E
325 160 07 00	1.00	SFD	1.00	1.00	1.00	\$0.00	\$0.00	Thompson Eugene&Kellie Living Trust 12-21-06
325 160 08 00	1.00	SFD	1.00	1.00	1.00	\$0.00	\$0.00	Cornerstone At Stonebridge Ests L P
325 160 16 00	1.00	SFD	1.00	1.00	1.00	\$0.00	\$0.00	Rosenberger William S&Debby A
325 160 17 00	1.00	SFD	1.00	1.00	1.00	\$0.00	\$0.00	Jin Ning&Ding Lan
325 160 18 00	1.00	SFD	1.00	1.00	1.00	\$0.00	\$0.00	Foster Christine
325 160 19 00	1.00	SFD	1.00	1.00	1.00	\$0.00	\$0.00	Dewall Eric G&Kimberly N
325 160 20 00	1.00	SFD	1.00	1.00	1.00	\$0.00	\$0.00	Heald Peter&Mary
325 160 21 00	1.00	SFD	1.00	1.00	1.00	\$0.00	\$0.00	Gutman Ron&lanit
325 160 22 00	1.00	SFD	1.00	1.00	1.00	\$0.00	\$0.00	Kneeshaw Richard&Lenora Trust 06-06-02 Et Al
325 160 23 00	1.00	SFD	1.00	1.00	1.00	\$0.00	\$0.00	Wright Sheryl A
325 160 24 00	1.00	SFD	1.00	1.00	1.00	\$0.00	\$0.00	Pankotai Ferenc&Maureen
325 160 25 00	1.00	SFD	1.00	1.00	1.00	\$0.00	\$0.00	Pan Yunke&Liu Rong
325 160 26 00	1.00	SFD	1.00	1.00	1.00	\$0.00	\$0.00	Broyles Vincent L&Corinne
325 160 27 00	1.00	SFD	1.00	1.00	1.00	\$0.00	\$0.00	Cornerstone At Stonebridge Ests L P
325 160 28 00	1.00	SFD	1.00	1.00	1.00	\$0.00	\$0.00	Cornerstone At Stonebridge Ests L P
325 160 30 00	0.62	OSP	0.00	0.00	0.00	\$0.00	\$0.00	Stonebridge Estates Master Assn
325 160 31 00	7.06	OSP	0.00	0.00	0.00	\$0.00	\$0.00	Stonebridge Estates Master Assn
325 160 32 00	0.01	OSP	0.00	0.00	0.00	\$0.00	\$0.00	Stonebridge Estates Master Assn
325 160 33 00	0.01	OSP	0.00	0.00	0.00	\$0.00	\$0.00	Stonebridge Estates Master Assn
325 160 34 00	0.01	OSP	0.00	0.00	0.00	\$0.00	\$0.00	Stonebridge Estates Master Assn
325 160 35 00	1.00	SFD	1.00	1.00	1.00	\$0.00	\$0.00	Thompson John N&Nancy E
325 160 36 00	1.00	SFD	1.00	1.00	1.00	\$0.00	\$0.00	Trinh Hien&Tien Evelyne Hoang Yen Vu
325 160 37 00	1.00	SFD	1.00	1.00	1.00	\$0.00	\$0.00	Ross Matthew F&Tiew Wan Koon
325 160 38 00	1.00	SFD	1.00	1.00	1.00	\$0.00	\$0.00	Cornerstone At Stonebridge Ests L P
325 160 39 00	1.00	SFD	1.00	1.00	1.00	\$0.00	\$0.00	Lai Mega
325 160 46 00	1.00	SFD	1.00	1.00	1.00	\$0.00	\$0.00	Schupp William A&Zou Weidong
325 160 47 00	1.00	SFD	1.00	1.00	1.00	\$0.00	\$0.00	Mcnair John&Lewis Doris
325 160 48 00	7.98	OSP	0.00	0.00	0.00	\$0.00	\$0.00	Stonebridge Estates Master Assn
325 170 04 00	1.00	SFD	1.00	1.00	1.00	\$0.00	\$0.00	Toll Ca Xix L P
325 170 05 00	1.00	SFD	1.00	1.00	1.00	\$0.00	\$0.00	Toll Ca Xix L P
325 170 06 00	1.00	SFD	1.00	1.00	1.00	\$0.00	\$0.00	Toll Ca Xix L P
325 170 10 00	1.00	SFD	1.00	1.00	1.00	\$0.00	\$0.00	Toll Ca Xix L P

EXHIBIT C - Assessment Roll (Fiscal Year 2013)
Rancho Encantada/Stonebridge Estates Maintenance Assessment District

Parcel Number	Acres/ Units ⁽¹⁾	Land Use ⁽²⁾	Assessment Factors		Total EBUs	Unit Cost (\$/Ebu)	FY 2013 ⁽⁴⁾ Assessment	Owner Name
			Land Use ⁽²⁾	Benefit ⁽³⁾				
325 170 11 00	1.00	SFD	1.00	1.00	1.00	\$0.00	\$0.00	Toll Ca Xix L P
325 170 12 00	1.00	SFD	1.00	1.00	1.00	\$0.00	\$0.00	Toll Ca Xix L P
325 170 13 00	1.00	SFD	1.00	1.00	1.00	\$0.00	\$0.00	Toll Ca Xix L P
325 170 14 00	1.00	SFD	1.00	1.00	1.00	\$0.00	\$0.00	Toll Ca Xix L P
325 170 15 00	1.00	SFD	1.00	1.00	1.00	\$0.00	\$0.00	Toll Ca Xix L P
325 170 16 00	1.00	SFD	1.00	1.00	1.00	\$0.00	\$0.00	Toll Ca Xix L P
325 170 17 00	1.00	SFD	1.00	1.00	1.00	\$0.00	\$0.00	Toll Ca Xix L P
325 170 18 00	1.00	SFD	1.00	1.00	1.00	\$0.00	\$0.00	Toll Ca Xix L P
325 170 19 00	1.00	SFD	1.00	1.00	1.00	\$0.00	\$0.00	Toll Ca Xix L P
325 170 20 00	1.00	SFD	1.00	1.00	1.00	\$0.00	\$0.00	Toll Ca Xix L P
325 170 21 00	1.00	SFD	1.00	1.00	1.00	\$0.00	\$0.00	Toll Ca Xix L P
325 170 22 00	1.00	SFD	1.00	1.00	1.00	\$0.00	\$0.00	Toll Ca Xix L P
325 170 23 00	1.00	SFD	1.00	1.00	1.00	\$0.00	\$0.00	Toll Ca Xix L P
325 170 24 00	1.00	SFD	1.00	1.00	1.00	\$0.00	\$0.00	Toll Ca Xix L P
325 170 25 00	1.00	SFD	1.00	1.00	1.00	\$0.00	\$0.00	Toll Ca Xix L P
325 170 26 00	1.00	SFD	1.00	1.00	1.00	\$0.00	\$0.00	Toll Ca Xix L P
325 170 27 00	1.00	SFD	1.00	1.00	1.00	\$0.00	\$0.00	Toll Ca Xix L P
325 170 28 00	1.00	SFD	1.00	1.00	1.00	\$0.00	\$0.00	Toll Ca Xix L P
325 170 29 00	1.00	SFD	1.00	1.00	1.00	\$0.00	\$0.00	Toll Ca Xix L P
325 170 30 00	1.00	SFD	1.00	1.00	1.00	\$0.00	\$0.00	Toll Ca Xix L P
325 170 31 00	1.00	SFD	1.00	1.00	1.00	\$0.00	\$0.00	Toll Ca Xix L P
325 170 35 00	0.01	OSP	0.00	0.00	0.00	\$0.00	\$0.00	Toll Ca Xix L P
325 170 36 00	1.00	SFD	1.00	1.00	1.00	\$0.00	\$0.00	Toll Ca Xix L P
325 170 37 00	1.00	SFD	1.00	1.00	1.00	\$0.00	\$0.00	Toll Ca Xix L P
325 170 38 00	1.00	SFD	1.00	1.00	1.00	\$0.00	\$0.00	Toll Ca Xix L P
325 170 39 00	1.00	SFD	1.00	1.00	1.00	\$0.00	\$0.00	Toll Ca Xix L P
325 170 40 00	1.00	SFD	1.00	1.00	1.00	\$0.00	\$0.00	Toll Ca Xix L P
325 170 41 00	1.00	SFD	1.00	1.00	1.00	\$0.00	\$0.00	Toll Ca Xix L P
325 170 42 00	1.00	SFD	1.00	1.00	1.00	\$0.00	\$0.00	Toll Ca Xix L P
325 170 43 00	1.00	SFD	1.00	1.00	1.00	\$0.00	\$0.00	Toll Ca Xix L P
325 170 44 00	21.55	OSP	0.00	0.00	0.00	\$0.00	\$0.00	Sycamore Estates L L C
TOTAL	-	-	-	-	917.93	-	\$0	

⁽¹⁾ Applicable units (acres or dwelling units) dependent upon Land Use Code.
⁽²⁾ Refer to Assessment Engineer's Report for descriptions of Land Use Code and Land Use Factor.
⁽³⁾ Refer to Assessment Engineer's Report for applicable Benefit Factor.
⁽⁴⁾ FY 2013 is the City's Fiscal Year 2013, which begins July 1, 2012 and ends June 30, 2013.