



TECHNICAL RIDER
UNDER THE BIG TOP

ARRIVAL / SET-UP

Show vehicles arrive between midnight and 6am.
If there is a variation we will advise you. Please be sure gates and grounds are open and ready for our arrival.
Set up time: 6:00 AM

DEPARTURE

Immediately following the last performance.
Show vehicles leave immediately when loaded.
Tear-Down is about 3 hours.

SHOW TIMES

See Ticket and Show Info sheet

ELECTRICAL

We carry our own portable generator system and electricians.
No electricity is required from you.

WATER

We require one faucet or hydrant located within 200 feet of our set-up area.

CONCESSIONS

We retain exclusive food, drink, souvenir, photo, parking, and ride rights and revenue.

CLEAN UP

We clean up the entire set-up and parking area.
We arrange for a dumpster for manure and trash removal and for a mechanical sweeper if lot is asphalt.
We professionally seal any holes made in asphalt.

SECURITY

We provide all necessary security for performance, backstage and patron parking areas. (If applicable)

TOUR MANAGEMENT

Show manager arrives 6:00 AM on show day and is available at the lot throughout the run.

INSURANCE

We provide a one million dollar insurance certificate naming the venue additionally insured.

CIRCO ATAYDE

LOCATION: Lower Inspiration Parking Lot

TARGET POPULATION: Children, teens and adults in the general Market

ESTIMATED ATTENDANCE: 20,000 for the event

AMPLIFIED MUSIC: Circus has music in tent only.

NO ALCOHOL ON PREMISES

HOST ORGANIZATION: Circo Atayde

CIRCUS WILL BE PRICE AT \$ 15.00, 25.00 AND 35.00 WITH CHILDREN AT HALF PRICE AND DISCOUNTS BEING OFFERED

PERFORMANCES SCHEDULED: 24

TENT WILL BE STAKED AND TIED DOWN FOR SECURITY. THERE ARE 4 CENTER POLES. STAKES AND QUARTER POLES DOT THE PERIMETER.

CIRCUS IS RESPONSIBLE FOR ASPHALT DAMAGE.

ALL PERMITS WILL BE APPLIED FOR IN ADEQUATE FASHION WITH THE CITY.

PARKING WILL BE COORDINATED WITH THE PARK AUTHORITY.

TENTS AND TRAILERS WILL UTILIZE 250 SPACES

REFERENCES FOLLOW

CIRCO ATAYDE

Tuesday, December 7, 2010 from 7:00 pm to 9:00 pm

Wednesday, December 8, 2010 from 4:00 pm to 9:00 pm

Thursday, December 9, 2010 from 4:00 pm to 9:00 pm

- Friday, December 10, 2010 from 4:00 pm to 9:00 pm

Saturday, December 11, 2010 from 1:00 pm to 9:00 pm

Sunday, December 12, 2010 from 1:00 pm to 9:00 pm

Monday, December 13, 2010 from 4:00 pm to 9:00 pm

Tuesday, December 14- Saturday, December 18 the same hours

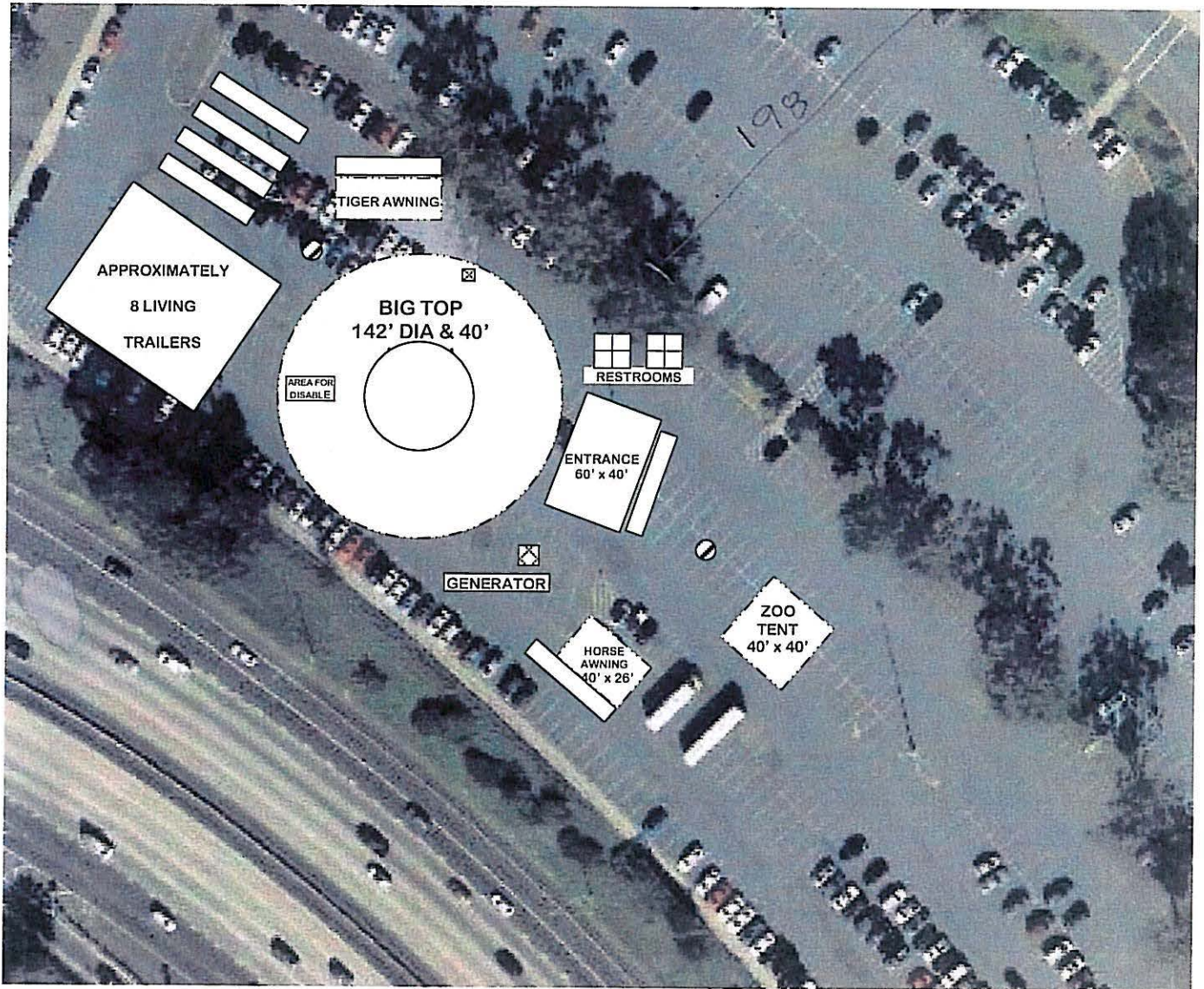
Set up - Monday, December 6

Breakdown - Sunday, December 19, to be completed by 11:00 pm

Dumpster arrangements will be made

Show carries own toilet trailer

BALBOA PARK CIRCUS SITE LAYOUT



-----	FENCING
⊠	POWER BOX
⊙	LIGHT TOWER
-----	TENT / AWNING
⊘	FIRE LANE