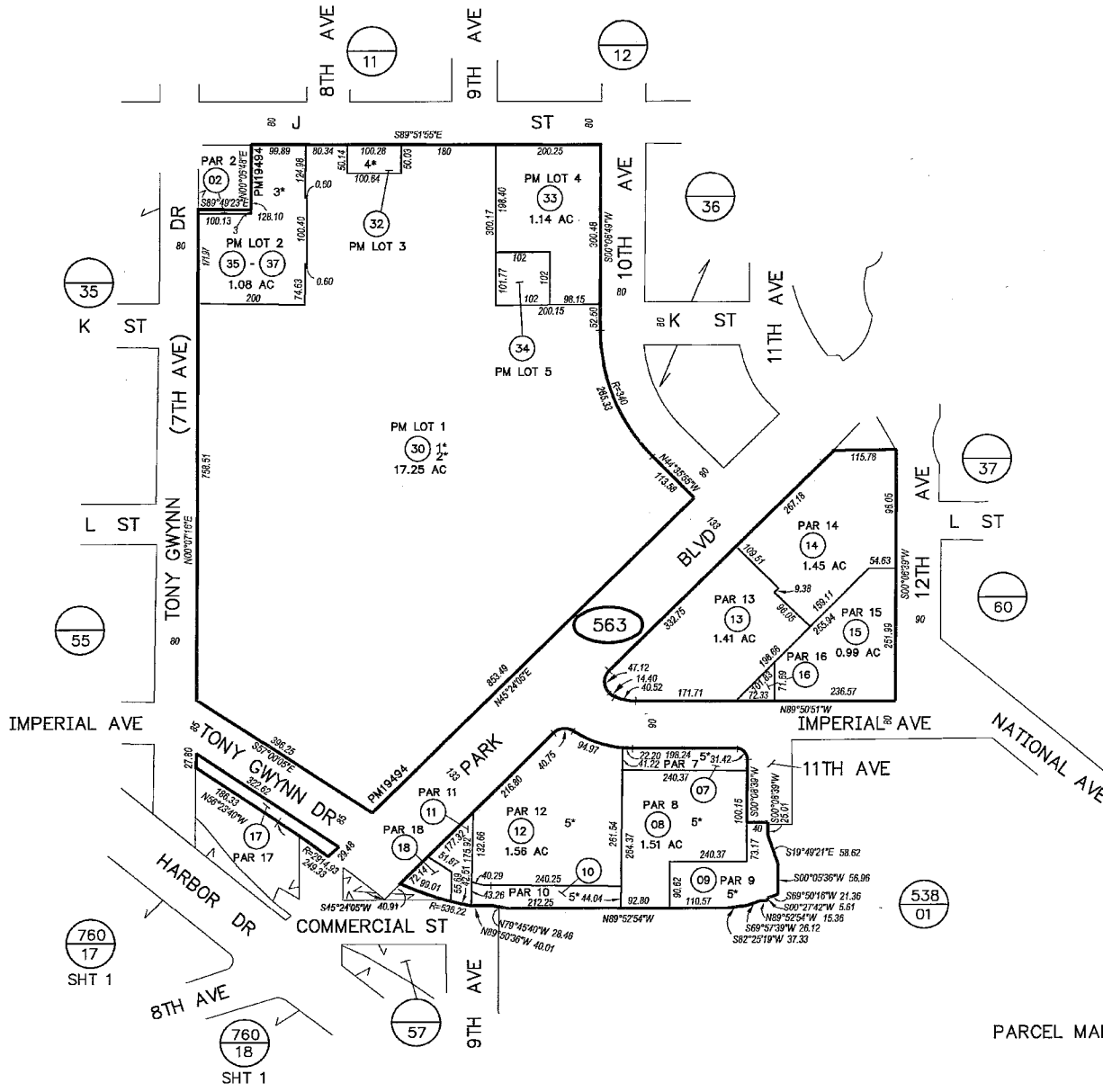


THIS MAP WAS PREPARED FOR ASSESSMENT PURPOSES ONLY. NO LIABILITY IS ASSUMED FOR THE ACCURACY OF THE DATA SHOWN. ASSESSOR'S PARCELS MAY NOT COMPLY WITH LOCAL SUBDIVISION OR BUILDING ORDINANCES.



SAN DIEGO COUNTY ASSESSOR'S MAP
 535-56
 SHT 1 OF 3
 1" = 200'

07/27/2009 ED

Drawn: 1/8/2002 By: JS From: 535-561, 562

CHANGES				
BLK	PRIOR APN	NEW APN	YR	QUIT NO.
563	VAR	1-19	02	1065
	-361-18849	20-22	02	10055
	03&19	23	02	2157
	01	24-28	03	1036
	24-28	29	03	1597
	06	-362-17	05	1231
	05&20-22	30	05	1227
	04, 23, 29&30	30-34	05	1288
	31	35-37 & CONDO	08	613
	32	CONDO	10	511

- 1* 760-214-75
- 2* 760-214-75-01
- 3* CONDO THE LEGEND DOC2006-0331566 DOC2007-0575990 (SEE SHT 2)
- 4* CONDO SCHIEFER & SONS DOC2008-0147208 (SEE SHT 3)
- 5* CTRL #9733 TFM PTS 145036

PARCEL MAP -- 18855