



THE CITY OF SAN DIEGO
General Plan
Land Use and Community
Planning Element

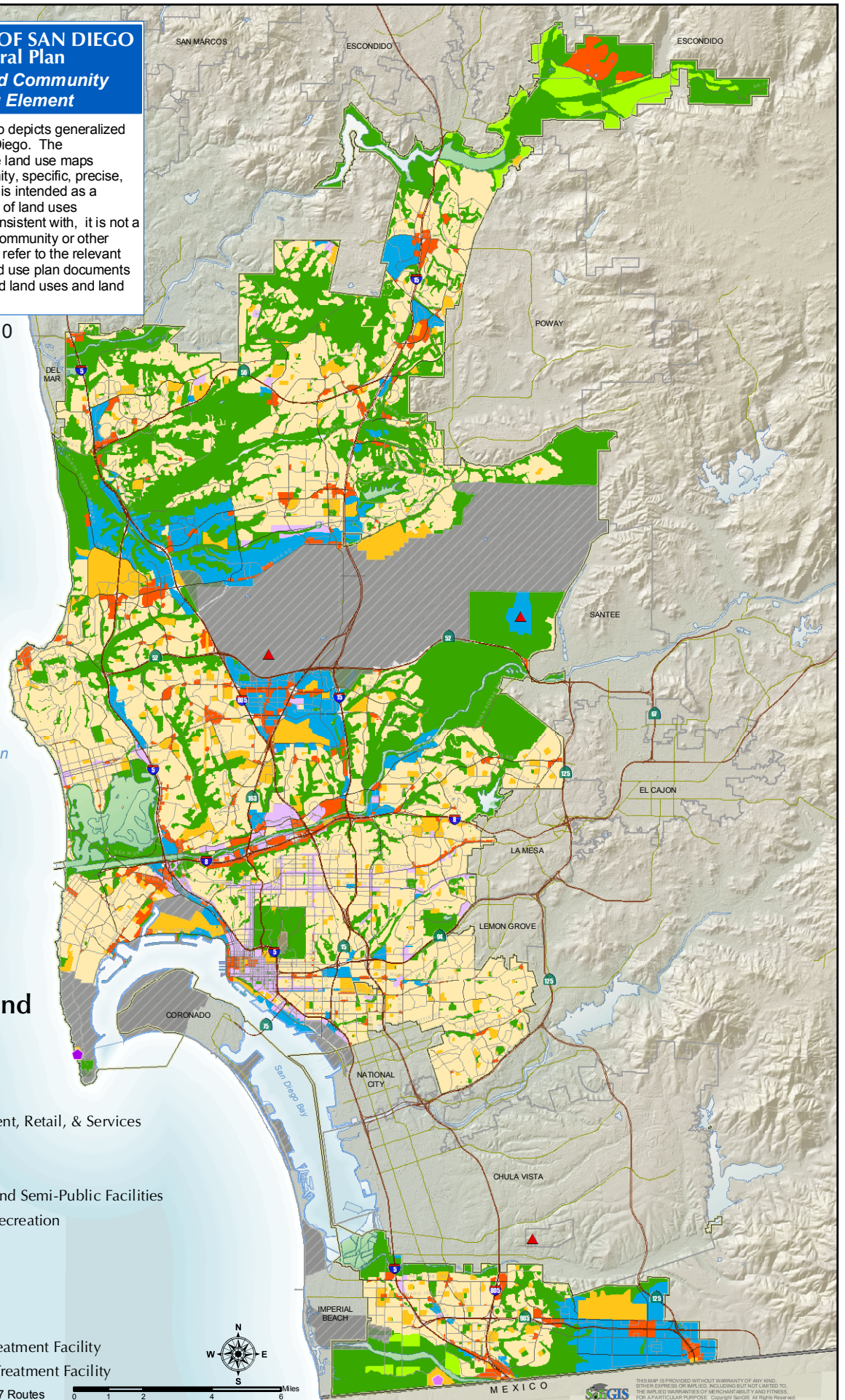
The General Plan Land Use Map depicts generalized land use within the City of San Diego. The information is a composite of the land use maps adopted for each of the community, specific, precise, subarea and park plan areas. It is intended as a representation of the distribution of land uses throughout the city; although consistent with, it is not a replacement or substitution for community or other adopted land use plans. Please refer to the relevant community or other adopted land use plan documents for more detail regarding planned land uses and land use planning proposals.

Revised March 15, 2010

Figure LU-2
General Plan Land
Use and Street
System

- Residential
- Commercial Employment, Retail, & Services
- Multiple Use
- Industrial Employment
- Institutional & Public and Semi-Public Facilities
- Park, Open Space, & Recreation
- Agriculture
- Other Features**
- Military Use
- Active Landfill
- Existing Wastewater Treatment Facility
- Proposed Wastewater Treatment Facility

Source: SANDAG 2007 RTP; MTS 2007 Routes



0 1 2 4 6 Miles

THIS MAP IS PROVIDED WITHOUT WARRANTY OF ANY KIND, EITHER EXPRESS OR IMPLIED, INCLUDING BUT NOT LIMITED TO, THE IMPLIED WARRANTIES OF MERCHANTABILITY AND FITNESS FOR A PARTICULAR PURPOSE. Copyright 2010. All Rights Reserved.