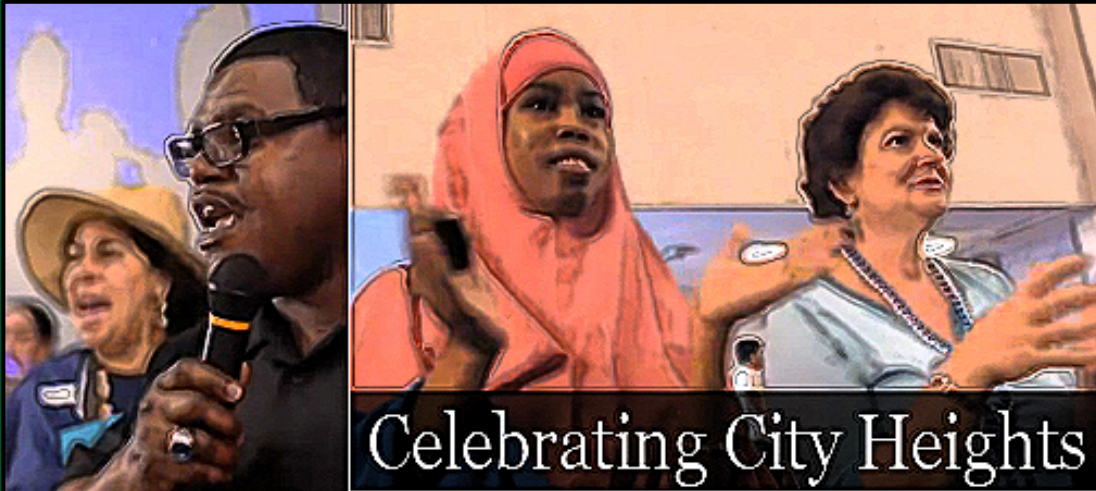


# CITY HEIGHTS URBAN GREENING

January 6, 2014



Celebrating City Heights



# Grant Objectives

## Strategic Growth Council



# PROJECT ELEMENTS

**1. Urban Forestry**

**3. Pedestrian &  
Bike Connectivity**

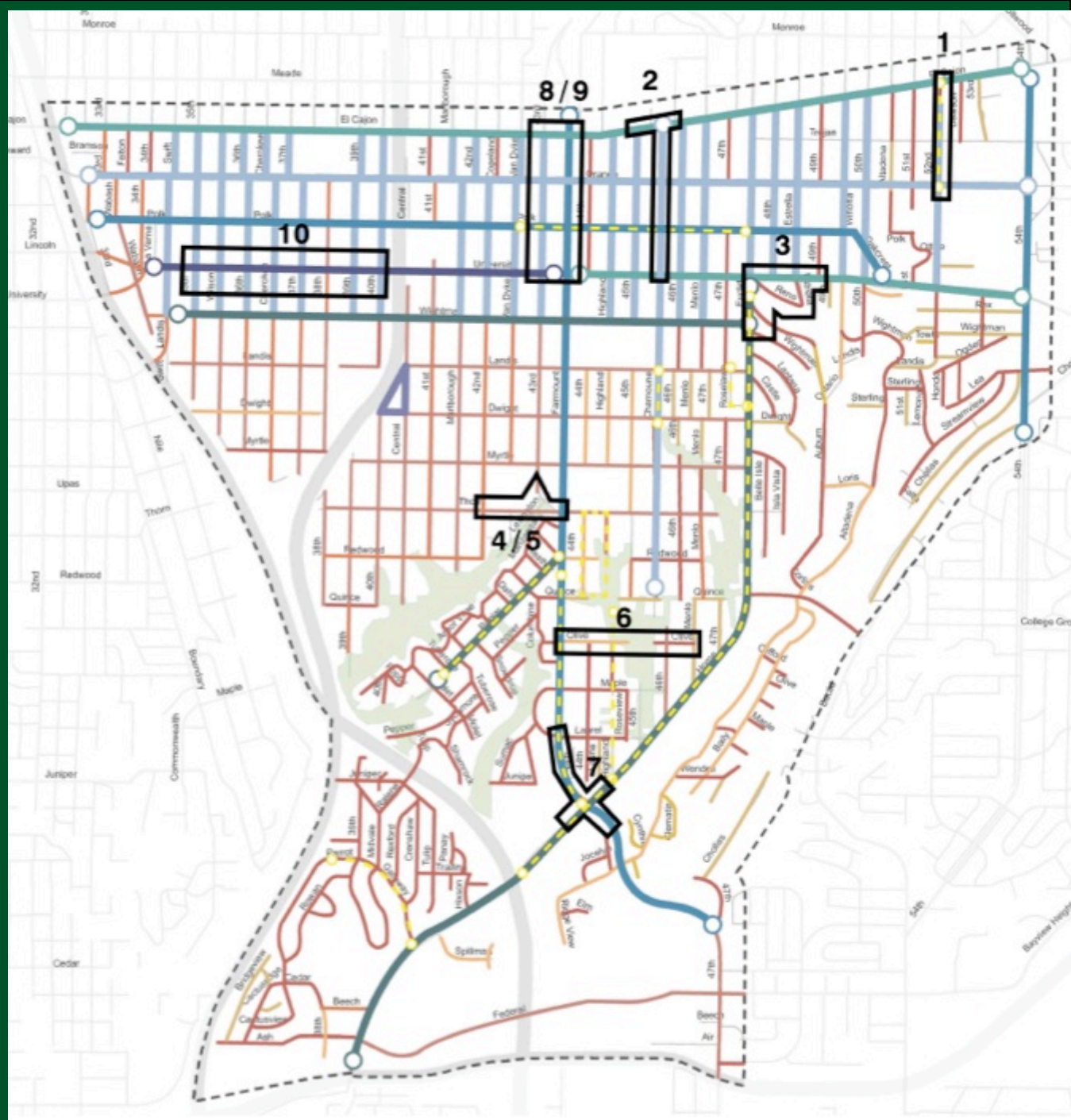
**CHUG**

**2. Urban Storm  
Water  
Management**

**4. Open Space /  
Parks  
Connectivity**

# Pilot Projects

1. 52<sup>nd</sup> ST
2. Chamoune Ave & Hoover High Access
3. Euclid & University Ave
4. Creating a public space at 43<sup>rd</sup> & Thorne
5. 43<sup>rd</sup> to Thorne connecting to Fairmount
6. Olive between Fairmount and Menlo
7. Fairmount between Laurel and Home
8. 43<sup>rd</sup> as a one way street
9. Fairmount as a one way street
10. University Ave (Mercado District)



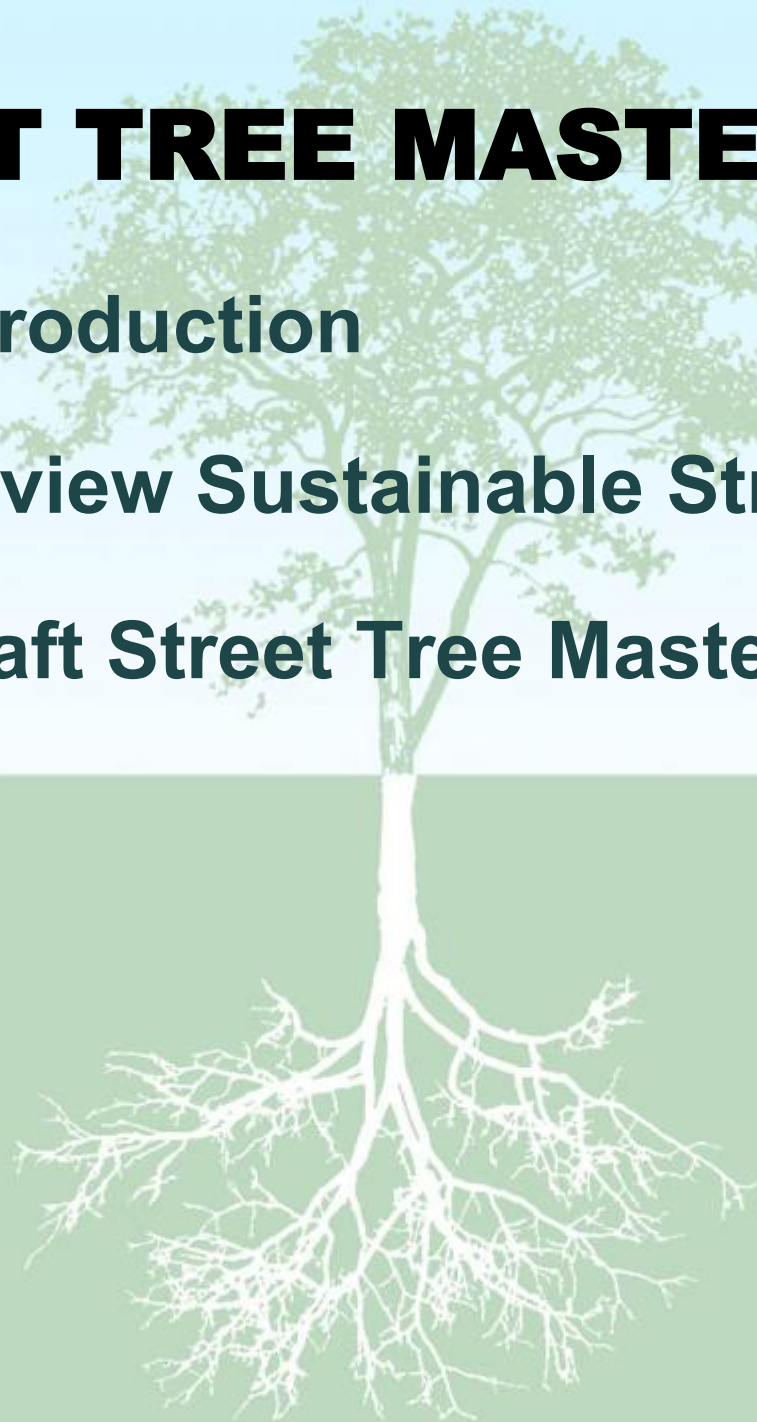
# Pilot Projects

4. Creating a public space at 43<sup>rd</sup> & Thorne
  5. 43<sup>rd</sup> to Thorne connecting to Fairmount
- A Class I bike lane
  - Public space that connects to the Ocean Discover Institute
  - Full intersection at 43<sup>rd</sup>/Throne & Fairmount Intersection

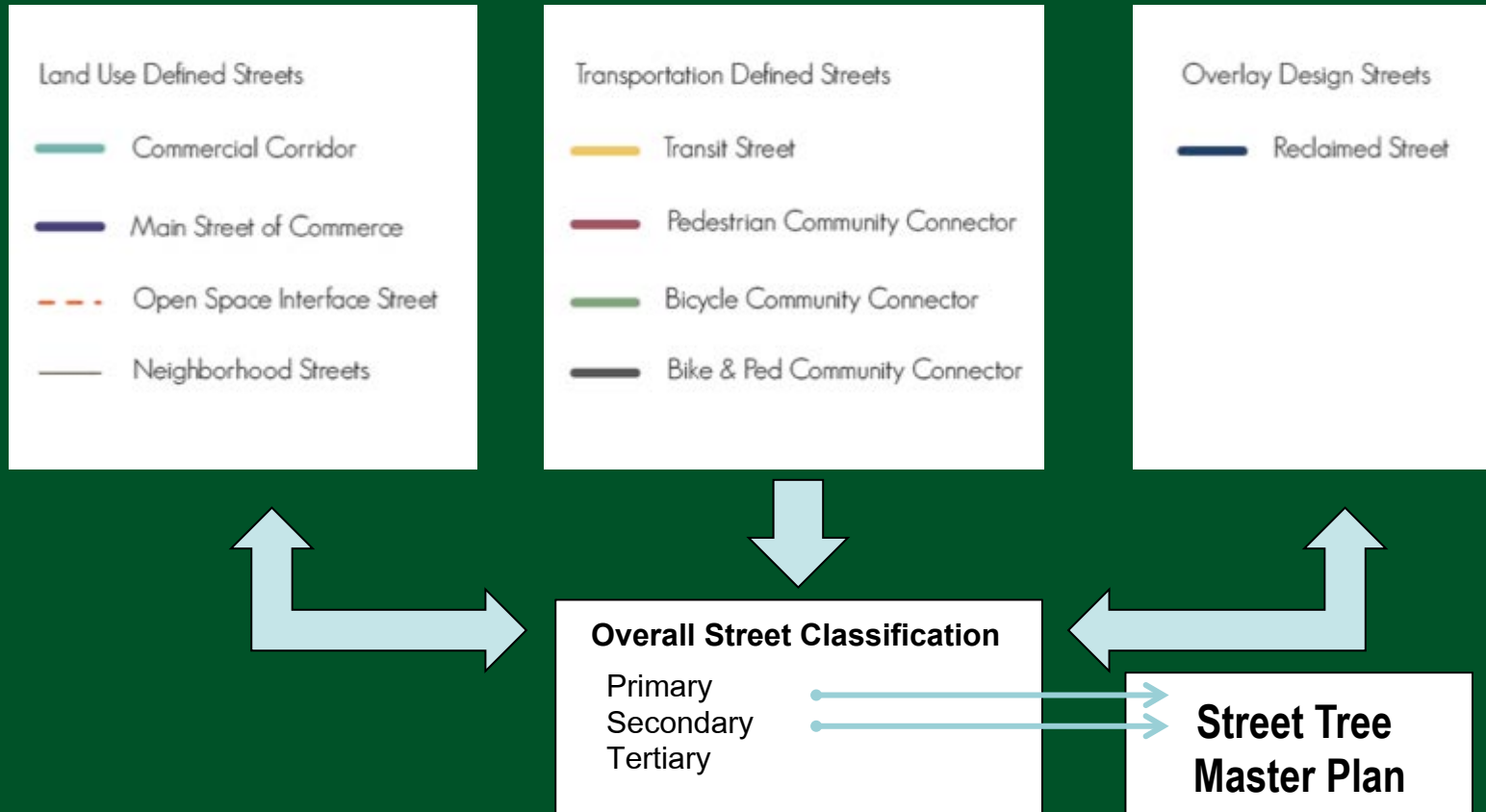


# **STREET TREE MASTER PLAN**

- **Introduction**
- **Review Sustainable Streets**
- **Draft Street Tree Master Plan**

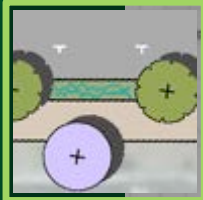
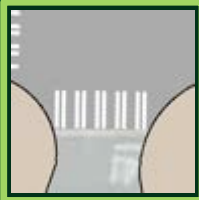
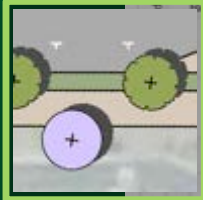
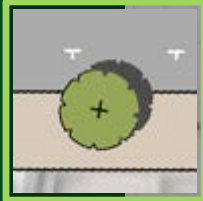


## METHODS TO DEFINE STREETS



# Sustainable Streets

## Potential Treatments

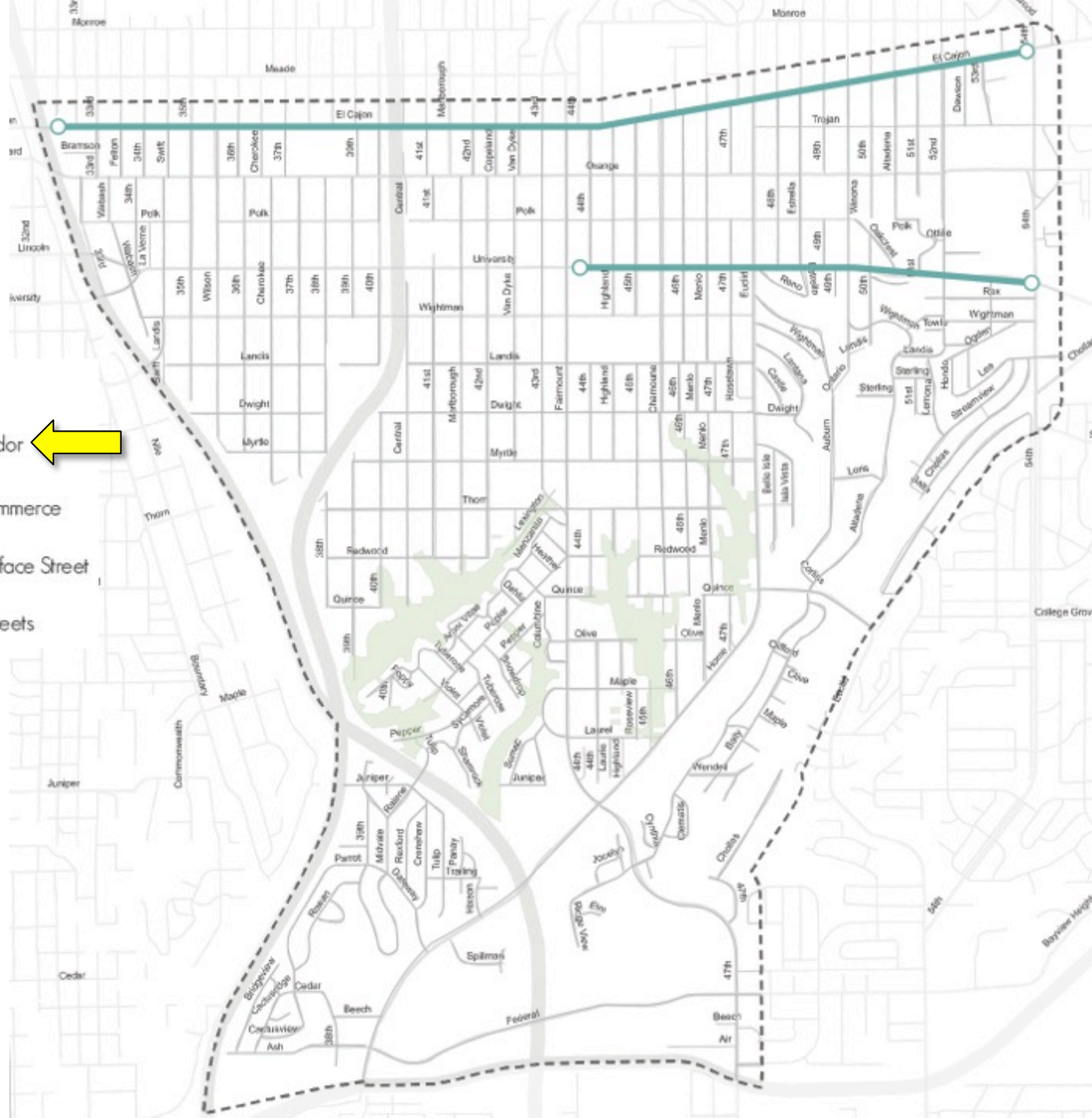




# Commercial Corridor

Land Use Defined Streets

-  Commercial Corridor 
-  Main Street of Commerce
-  Open Space Interface Street
-  Neighborhood Streets



# Main Street of Commerce

## Land Use Defined Streets

-  Commercial Corridor
-  Main Street of Commerce 
-  Open Space Interface Street
-  Neighborhood Streets



# Open Space Street

## Land Use Defined Streets

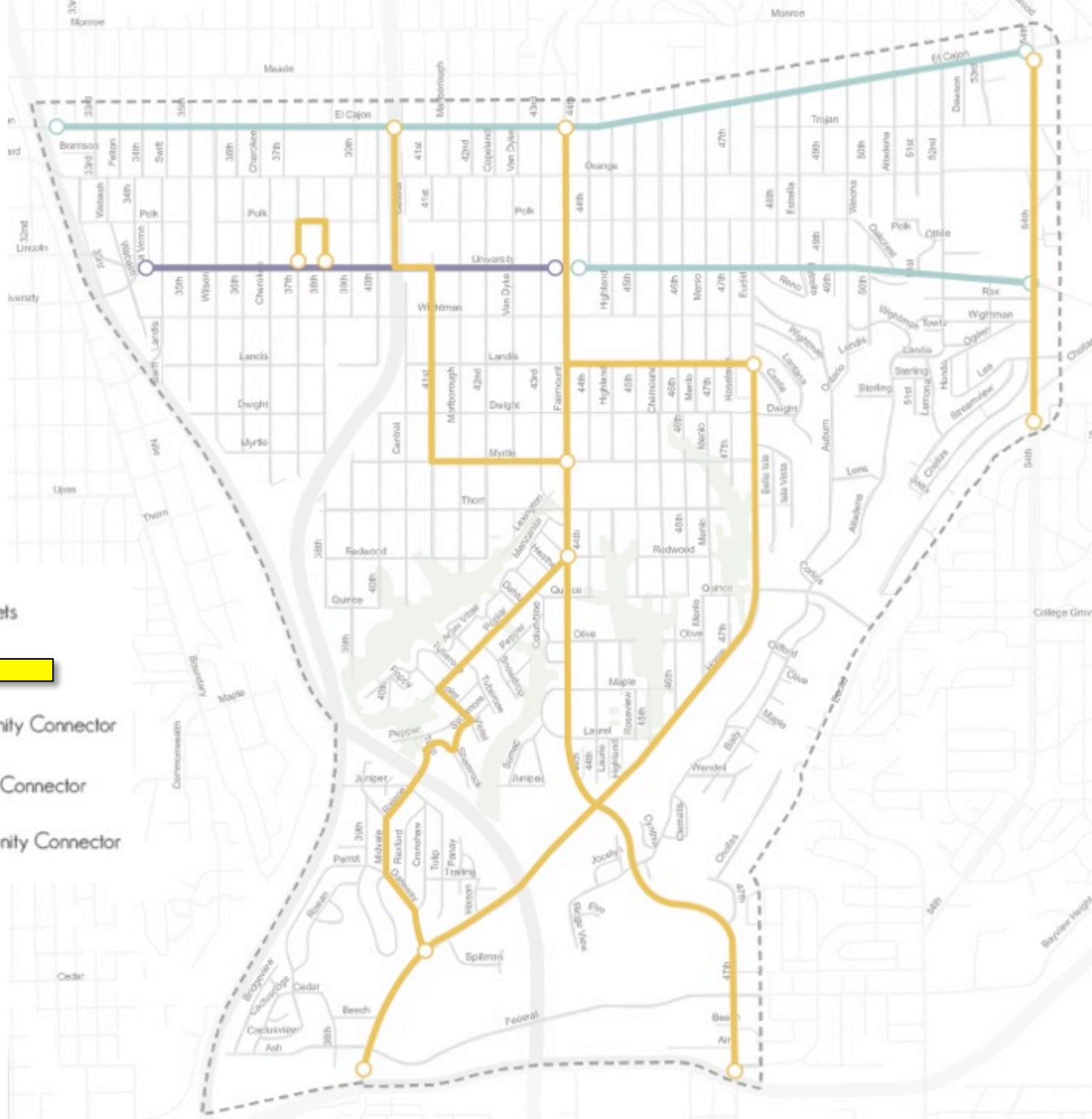
-  Commercial Corridor
-  Main Street of Commerce
-  Open Space Interface Street
-  Neighborhood Streets



# Transit Street

## Transportation Defined Streets

-  Transit Street
-  Pedestrian Community Connector
-  Bicycle Community Connector
-  Bike & Ped Community Connector



# Pedestrian Connector

## Transportation Defined Streets

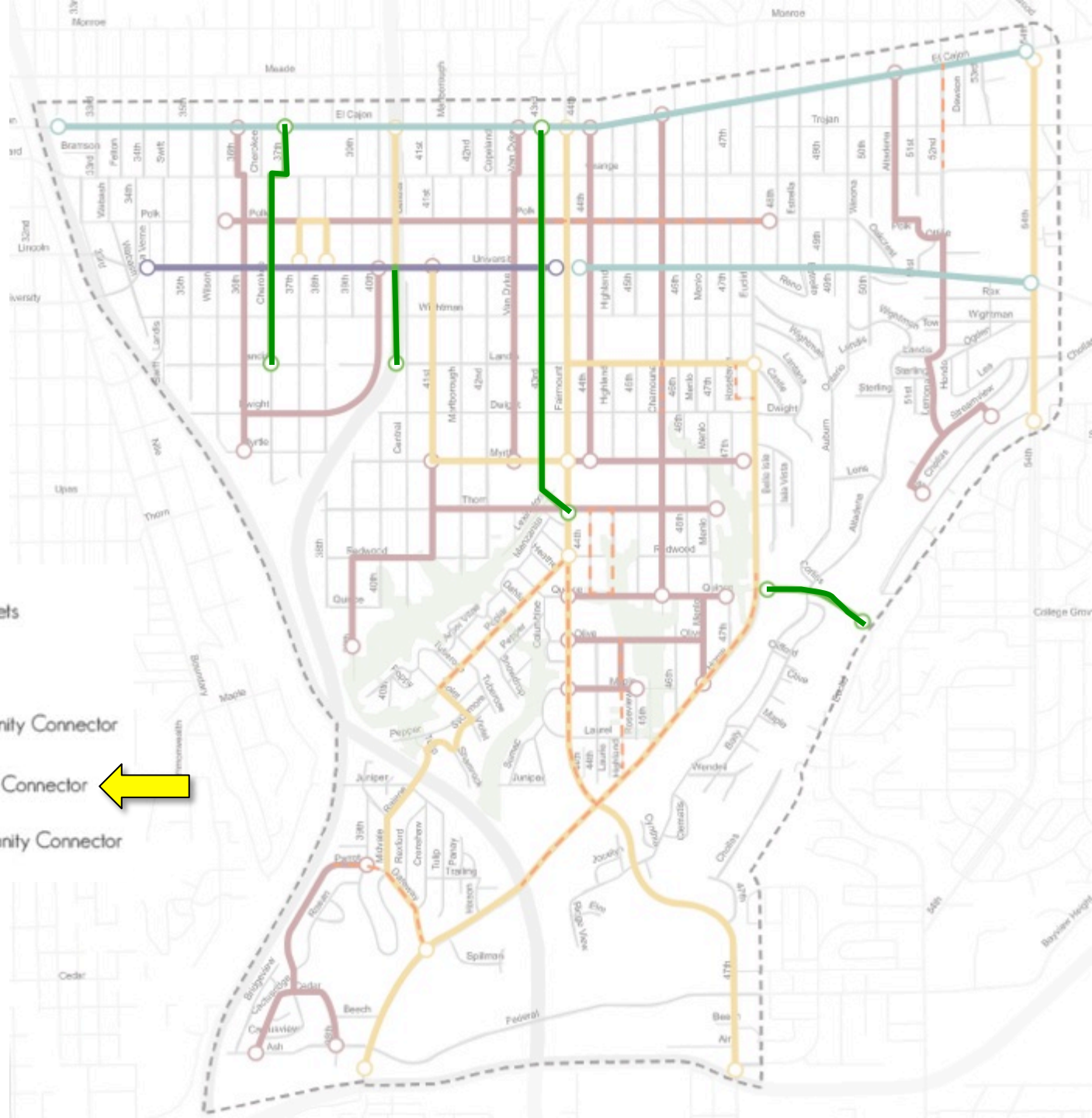
-  Transit Street
-  Pedestrian Community Connector 
-  Bicycle Community Connector
-  Bike & Ped Community Connector



# Bicycle Connector

## Transportation Defined Streets

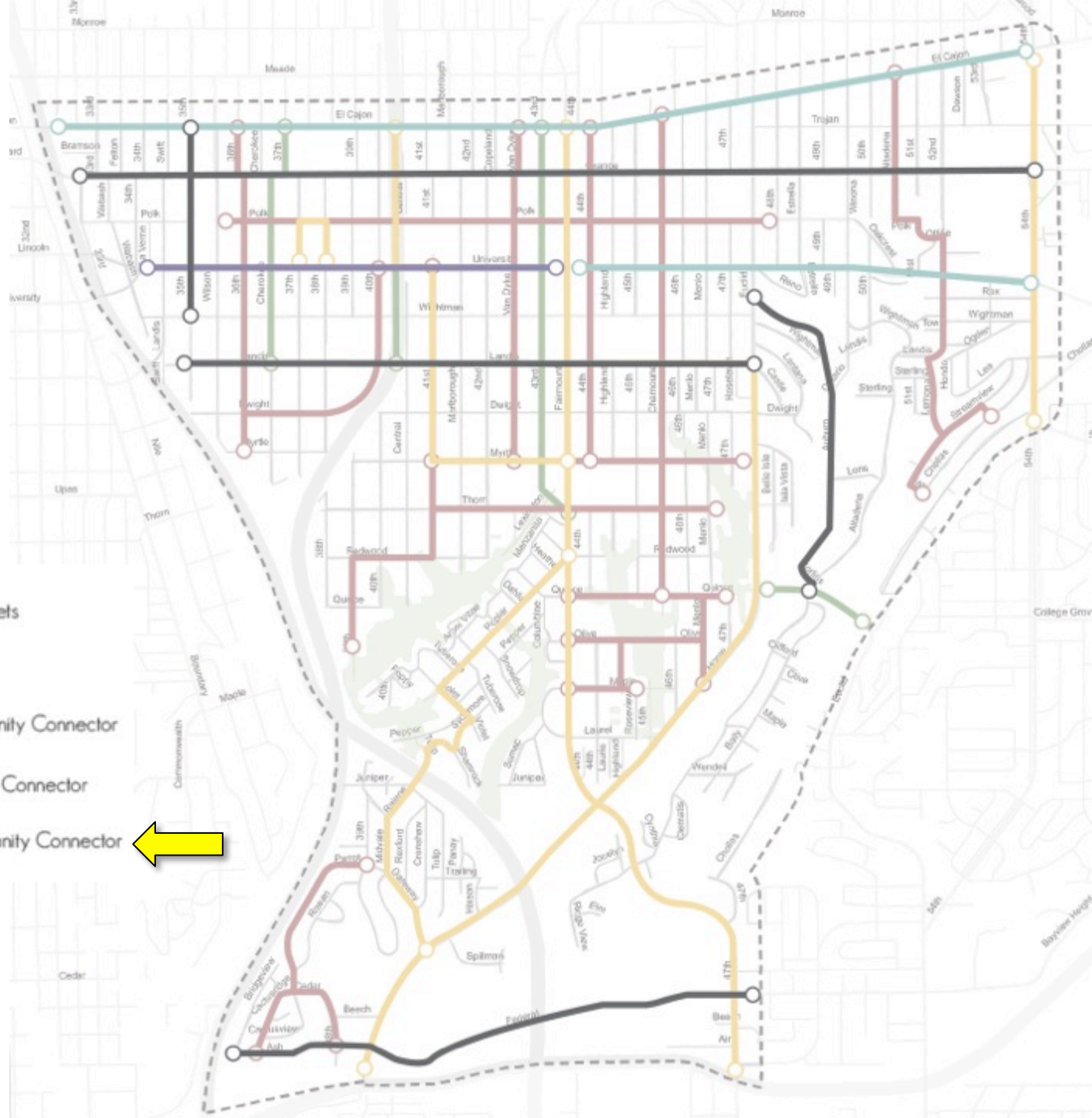
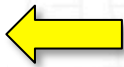
- Transit Street
- Pedestrian Community Connector
- Bicycle Community Connector
- Bike & Ped Community Connector



# Bike & Ped Connector

## Transportation Defined Streets

- Transit Street
- Pedestrian Community Connector
- Bicycle Community Connector
- Bike & Ped Community Connector



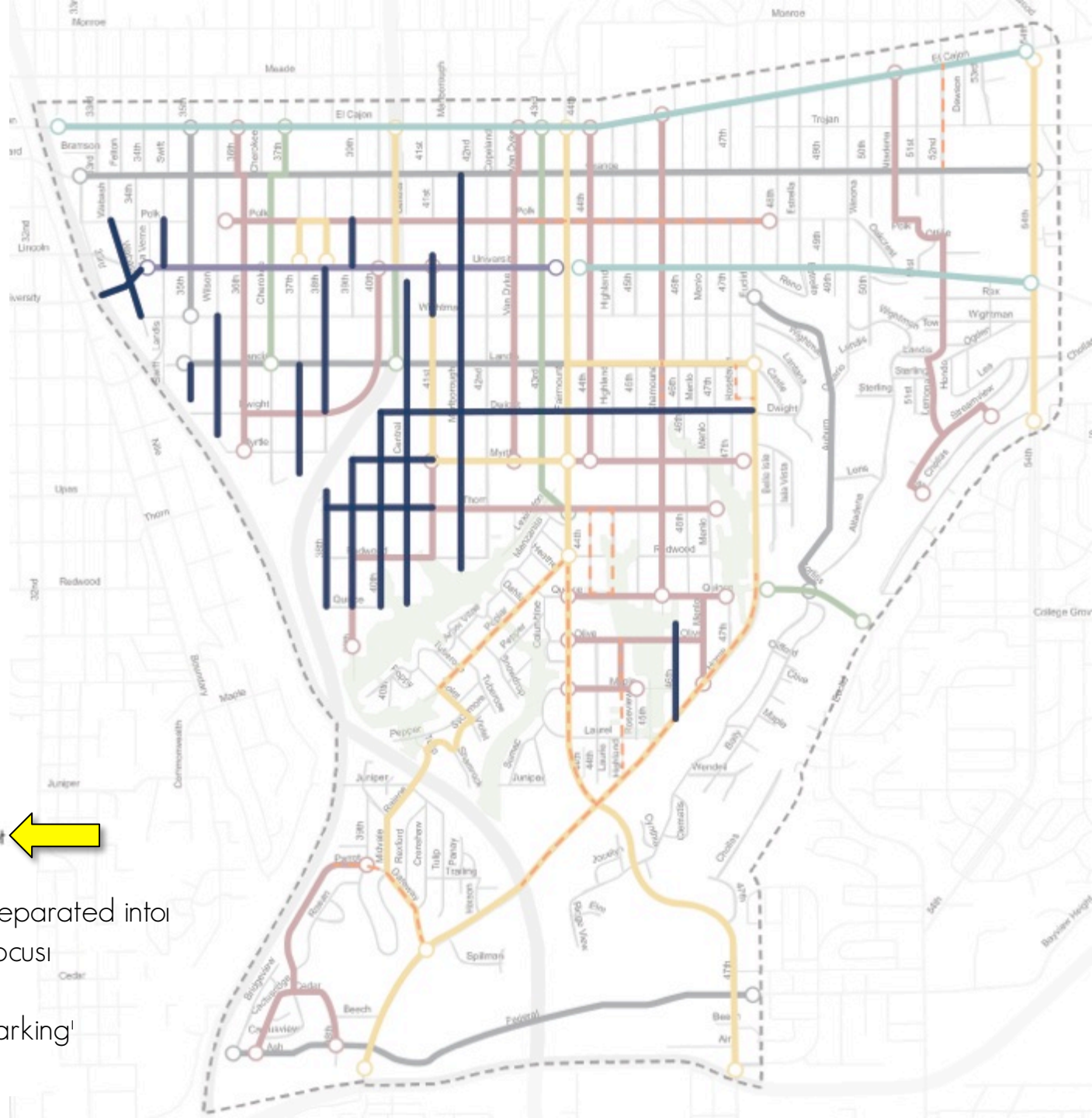
# Reclaimed Street

Overlay Design Streets



Streets can be separated into

- Pedestrian focus
- Bike focus
- Enhanced parking!



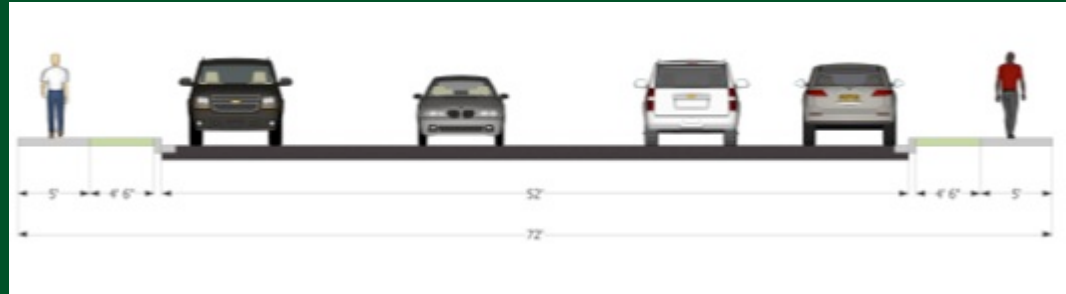
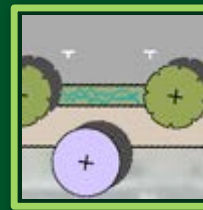


# Reclaimed Street

72' ROW

- **Pedestrian Focus**

- Lane diet to enhance planting zone & pedestrian zone
- Pop outs to allow for stormwater capture
- Trees & pop outs reduce traffic speed & define parking areas
- Added trees and planting give environmental benefits

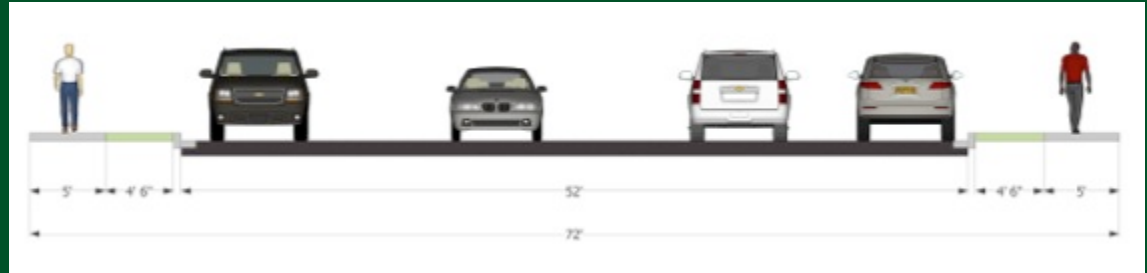
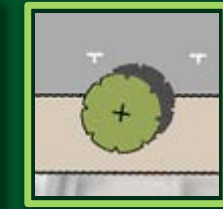
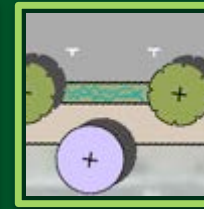


# Reclaimed Street

72' ROW

- **Bike Focus**

- Lane diet to add bicycle lane
- Enhanced Pedestrian & Planting Zones
- Pop outs to allow for stormwater capture
- Trees & pop outs reduce traffic speed & define parking areas
- Added trees and planting give environmental benefits



# Reclaimed Street

72' ROW

- **Enhanced Parking**

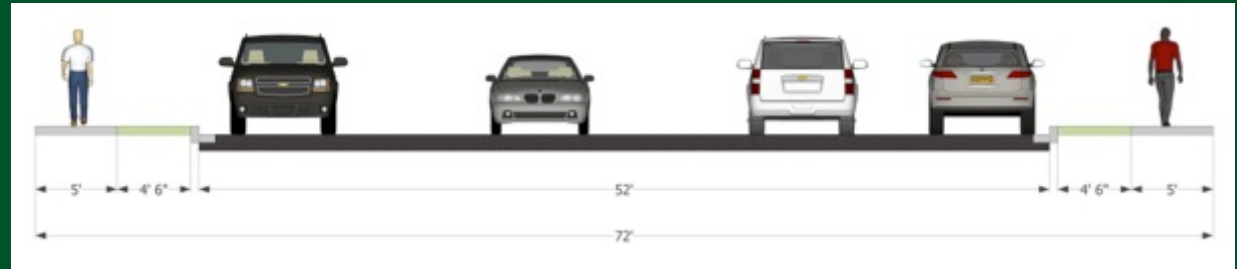
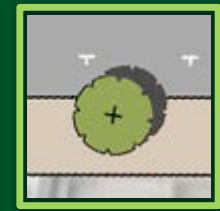
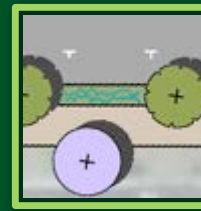
- Adds angled parking in existing curb to curb

- Enhanced Planting Zone

- Pop outs to allow for stormwater capture

- Trees & pop outs reduce traffic speed & define parking areas

- Added trees and planting give environmental benefits



# Street Tree Master Plan

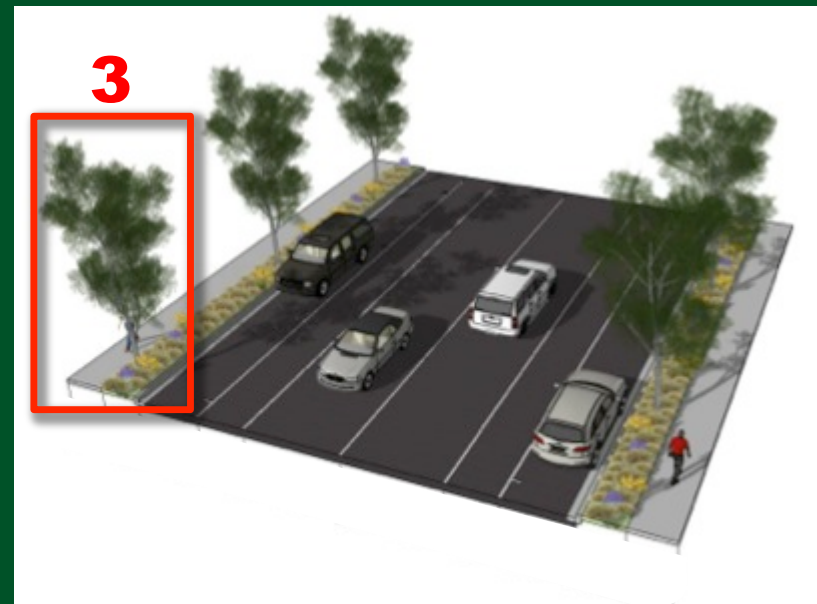
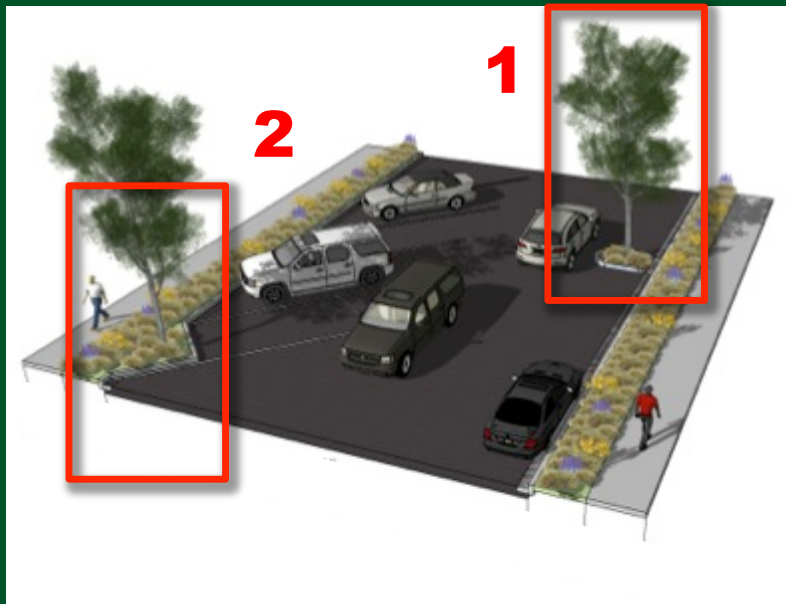
## Criteria for Street Tree Master Plan

- Trees are from the CSD approved Street Tree Selection Guide
- Tree species must be consistent with the approved Master Street Tree Plans of the Community or Landscape Standards of the Land Development Code

# Street Tree Master Plan

Ways trees can be used in the street environment:

1. Tree Pop out
2. Parkway Extension
3. In a Parkway (existing or widened)
4. In a Median (not shown)

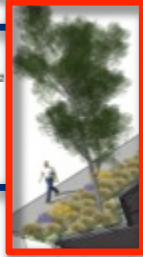


What determines what species should be used?

- Is there a dominant species?
- What is parkway or median width?
- What tree species fit well within that width?

# ROW Map

- 32' ROW
- 40' ROW
- 48' ROW
- 56' ROW
- 64' ROW
- 72' ROW
- 83' ROW
- 100' ROW
- 120' ROW



**SPECIAL  
CONDITION  
(Tree Grates,  
Medians,  
Expanded  
Parkways)**



# Small and Upright Trees

## SMALL AND UPRIGHT TREES:

Botanical Name	Common Name	Form	Height	Spread	Type	Drought	Native
Acacia pendula***	Weeping Acacia	SC	20	20	E		
Acacia subporosa	River Wattle	SC	25	25	E		
Acacia stenophylla**	Shoestring Acacia	SC	30	20	E		
Acer palmatum+	Japanese Maple	SC	20	20	D		
Albizia julibrissin	Silk Tree ←	SC	30+	-25	D/F	Yes	
Arbutus unedo++	Strawberry Tree	SC	30	20	E/F		
Archontophoenix cunninghamiana	King Palm ←	U	40+	-20	P	Yes	
Bauhinia blakeana*	Hong Kong Orchid ←	SC	20+	-20	D/F		
Callistemon citrinus~#	Lemon Bottle Brush ←	SC	-25	20+	E/F	Yes	
Callistemon salignus	White Bottlebrush	SC	25	25	E/F		
Cercis canadensis***	Eastern Redbud ←	SC	25	25	E/F		
Cercis mexicana***	Mexican Redbud ←	SC	25	25	D/F		
Cercis occidentalis***	Western Redbud ←	SC	25	25	D/F	Yes	Yes
Cercocarpus betuloides	Mountain Ironwood	SC	20	-20	E/F	Yes	Yes
Chiionanthus retusus	Chinese Fringe Tree ←	SC	-20	-20	D/F		
Heteromeles arbutifolia***	Toyon	SC	25	25	E	Yes	Yes
Hymenosporum flavum***	Sweetshade ←	SC	35	20	E/F		
Lagerstroemia indica*	Crape Myrtle ←	SC	-20	-20	D/F	Yes	
Lyonathamnus floribundus***	Catalina Ironwood ←	SC	50	35	E/F	Yes	Yes
Photinia fraserii***	Fraser Photinia	SC	20	20	E/F		
Raphiolepis	'Majestic Beauty'	SC	-20	-20	E/F	Yes	
Syagrus romanzoffianum++	Queen Palm ←	U	40+	-20	P	Yes	

← Preferred Species, CSD Approved, and present in City Heights

← Preferred Species, CSD Approved, and NOT present in City Heights

← NOT Preferred Species, CSD Approved, and present in City Heights

# Small and Upright Trees

Small Upright Trees are recommended for:

- Parkway with max. 3 ft. in width available
- Includes a minimum of 3' x 6' cutout
- Employ permeable walking surfaces when possible.
- Root barriers are essential



Albizia julibrissin (Silk Tree)



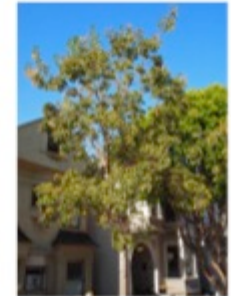
Archontophoenix cunninghamiana (King Palm)



Lyonothamnus floribundus (Catalina Ironwood)



Chionanthus retusus (Chinese Fringe Tree)



Hymenosporum flavum (Sweetshade)



Lagerstroemia indica (Crape Myrtle)



Bauhinia blakeana (Hong Kong Orchid)



Cercis occidentalis (Western Redbud)





# Medium Trees

Botanical Name	Common Name	Form	Height	Spread	Type	Drought	Native
Acacia baileyana	Bailey Acacia	SC	30+	-20	E	Yes	
Agonis flexuosa*	Peppermint	LC	-30	-20	E	Yes	
Arbutus 'Marina'***	Marina Madrone		35	30	E/F		
Bauhinia purpurea*	Purple Orchid tree	SC	-30	-20	D/F	Yes	
Bauhinia v. candida*	White Orchid tree	SC	-30	-20	E/F	Yes	
Brachychiton acerifolius	Flame tree	U	40+	-25	D/F	Yes	
Brahea armata***	Mexican Blue Palm	U	35		P		
Brahea edulis***	Guadalupe Palm	U	35		P	Yes	
Brahea brandegii***	Hesper Palm	U	+65		P		
Butia capitata***	Pindo Palm	U	25		P		
Calodendrum capense~	Cape Chestnut		30+	40+	D/F	Yes	
Callistemon viminalis~#	Bottle Brush		30+	-20	E/F	Yes	
Cassia leptophylla*	Gold Medallion tree		-30	-25	D/F		
Chilopsis linearis	Desert Willow	LC	30+	-40	D/F	Yes	Yes
Chionanthus virginicus	White Fringe Tree		30+	-25	D/F		
Chitalpa tashkentensis	Chitalpa	SC	30	30	D	Yes	
Dypsis decaryi	Triangle Palm	U	-40		P		
Eriobotrya deflexa*	Bronze Loquat		-20	-20	E		
Eucalyptus erythrocorys	Red Cap Gum	SC	-25	-25	E	Yes	
Eucalyptus gunnii	Cider Gum	LC	-60	40	E/F	Yes	
Eucalyptus torquata*	Coral Gum	SC	-20	-20	E		
Fraxinus oxycarpa	Raywood Ash	SC	30+	-25	D	Yes	
Geijera parvifolia*	Australian Willow		35+	-40	E/F	Yes	
Ginkgo biloba	Maidenhair Tree	U	40+	-40	D		
Jacaranda mimosifolia	Jacaranda	LC	40+	-40	D/F		
Lophostemon confertus	Brisbane Box		-60	-40	E	Yes	
Magnolia grandiflora	St. Marys* Magnolia		25+	-20	E/F		
Melaleuca linarifolia~	Flaxleaf Paperbark		-40	-40	E/F	Yes	
Melaleuca quinquenervia~	Cajeput Tree	LC	-40	-40	E/F	Yes	
Metrosideros excelsus*~	New Zealand Chris.		-20	-20	E/F	Yes	
Pistacia chinensis	Chinese Pistache		40+	40+	D	Yes	
Pittosporum undulatum	Victorian Box	SC	-25	-25	E/F	Yes	
Podocarpus macrophyllus	Yew Pine	U	30+	-20	E		
Pittosporum phillyraeoides	Willow Pittosporum	U	-25	15	E	Yes	
Pittosporum tenuifolium***	Tarata Pittosporum	SC	35	25	E/F		
Pyrus calleryana*	Bradford Pear		-30	-20	D/F		
Pyrus kawakamii	Evergreen Pear	SC	-30	-25	E/F		
Quercus ilex	Holly Oak	LC	-50	-50	E	Yes	
Quercus suber	Cork Oak	LC	-40	-40	E	Yes	
Rhus lancea	African Sumac	SC	-30	-25	E	Yes	
Sapium sebiferum	Chinese Tallow Tree	SC	30+	-25	D		
Stenocarpus sinuatus*	Firewheel Tree		30+	15	E/F		
Tristania laurina#	Elegant Brisbane	SC	25	25	E/F		
Tabebuia ipi*	Pink Trumpet	SC	30+	-25	D/F	Yes	
Washingtonia robusta~	Mexican Fan Palm	U	40+	20	P	Yes	

Added tree:  
 Ulmus parvifolia  
 (Chinese Elm)

← Preferred Species, CSD Approved, & Present in City Heights

← Preferred Species, CSD Approved, & NOT present in City Heights

# Medium Trees

## Medium Trees are recommended for:

- 4 ft. - 7 ft. parkways using a 5 ft. by 5 ft. cut-out
- Permeable pavers are recommended
- Root barriers are needed for all trees in this category

# Medium Trees



*Cassia leptophylla* (Gold Medallion)



*Cupaniopsis anacardioides* (Tuckeroo)



*Lophostemon confertus* (Brisbane Box)



*Magnolia grandiflora* (St. Mary's Magnolia)



*Geijera parvifolia* (Australian Willow)



*Jacaranda mimosifolia* (Jacaranda)



*Melaleuca linarifolia* (Flaxleaf Paperbark)



*Pistacia chinensis* (Chinese Pistache)



*Calodendrum capense* (Cape Chestnut)



*Chionanthus virginicus* (White Fringe Tree)



*Chitalpa tashkentensis* (Chitalpa)



*Eriobotrya deflexa* (Bronze Loquat)



# Medium Trees



*Metrosideros excelsus* (New Zealand Chris.)



*Podocarpus macrophyllus* (Yew Pine)



*Stenocarpus sinuatus* (Firewheel Tree)



*Pyrus calleryana* (Bradford Pear)



*Quercus ilex* (Holly Oak)



*Ulmus parvifolia* (Chinese Elm)



*Arbutus marina* (Marina Madrone)



# Large Trees

Botanical Name	Common Name	Form	Height	Spread	Type	Drought	Native
Afrocarpus gracilior~	African Fern Pine		40+	-40	E		
Arbutus menziesii	Madrona		40+	40+	E	Yes	Yes
Calocedrus decurrens	Incense Cedar		40+	-40	E	Yes	Yes
Cedrus deodara	Deodar Cedar		40+	40+	E	Yes	
Cupressus forbesi***	Tecate Cypress	LC	25+	25	E		
Eucalyptus polyanthemos	Silver Dollar Gum		40+	-40	E	Yes	
Eucalyptus leucoxyton	White Ironbark	LC	60+	40	E	Yes	
Koelreuteria bipinnata	Chinese Lantern		-40	-40	D/F		
Koelreuteria paniculata	Golden Rain		-40	-40	D/F	Yes	
Magnolia grandiflora	Southern Magnolia		-40	-40	E/F		
Olea europaea~	Olive "fruitless"		-40	-25	E	Yes	
Platanus acerifolia "Bloodgood"	London Plane		40+	40+	D		
Pinus canariensis	Canary Island Pine		40+	-25	E	Yes	
Pinus pinea~	Italian Stone Pine	LC	40+	40+	E	Yes	
Pinus muricata***	Bishop Pine	LC	50	40	E		Yes
Plantanus racemosa***	California Sycamore		60+	40+	D		Yes
Spathodea campanulata	African Tulip	LC	40+	30	D/F		
Tipuana tipu	Tipu Tree		40+	40+	D/F		

# Large Trees

Large Trees are recommended for:

- 7.0 foot to 10 foot wide parkways that will provide for a minimum of 40 square foot of uncovered space
- The uncovered space allows for root aeration, and water penetration



## Criteria for Street Tree Master Plan

- Palm or shade? LDC says palm trees may only be used if identified in the community plan. Canopy trees are preferred; however if space is limited or special circumstances exist, palm trees are better than no tree.
- Primary Streets
  - Large Canopies to provide shade to the pedestrian environment and match the scale of the street
- Secondary Streets
  - Canopies are encouraged but trees can be used to create a distinct character along the corridor





# Primary Street

## El Cajon Boulevard – Commercial Corridor

- Dominant Species:

- ✓ Jacaranda – good for medians



# Primary Street

## El Cajon Boulevard

- Dominant Species:

✓ Jacaranda

✓ African Fern Pine



# Primary Street

## El Cajon Boulevard

- Dominant Species:

- ✓ Jacaranda
- ✓ African Fern Pine
- ✓ Queen Palm



# Primary Street

## El Cajon Boulevard

- Dominant Species:

- ✓ Jacaranda
- ✓ African Fern Pine
- ✓ Queen Palm

- ✗ Eucalyptus – can be replaced by Brisbane Box



# Primary Street

## El Cajon Boulevard

- Recommended Tree Palette
  - Primary –Tree: Queen Palm
  - Secondary –Tree: Brisbane Box
  - Median: Jacaranda –



# Primary Street

## University Ave

- Dominant Species:



Jacaranda



# Primary Street

## University Ave – Main Street of Commerce

- Dominant Species:

- ✓ Jacaranda
- ✓ African Fern Pine



# Primary Street

## University Ave

- Dominant Species:

- ✓ Jacaranda
- ✓ African Fern Pine
- ✓ Queen Palm





# Primary Street

## University Ave

- Dominant Species:

- ✓ Jacaranda
- ✓ African Fern Pine
- ✓ Queen Palm
- ✓ Brisbane Box



# Primary Street

## University Ave

- Recommended Tree Palette
  - Primary –Tree: Brisbane Box
  - Secondary –Tree: Chinese Flame



# Primary Street

Landis Ave – Transit Street

- Dominant Species:

✓ African Fern Pine



# Primary Street

Landis Ave – Transit Street

- Dominant Species:

- ✓ African Fern Pine
- ✓ Queen Palm



# Primary Street

## Landis Ave – Transit Street

- Dominant Species:

- ✓ African Fern Pine
- ✓ Queen Palm
- ? Chinese Elm
- ~~Black Acacia~~
- ~~Carrot Wood~~



# Primary Street

## Landis Ave

- Recommended Tree Palette
  - Primary –Tree: Chinese Elm
  - Secondary –Tree: African Fern Pine



# Primary Street

## Myrtle Ave – Transit Street

- Dominant Species:

- ? Ash
- ~~X~~ Sweet Gum
- ~~X~~ Brazilian Pepper
- ~~X~~ Oleander
- ~~X~~ Carrot Wood



# Primary Street

## Myrtle Ave

- Recommended Tree Palette
  - Primary Tree: Crape Myrtle
  - Secondary Tree: Raywood Ash





# Primary Street

## Central Ave – Transit Street

- Dominant Species:

✓ Mexican Fan Palm



# Primary Street

## Central Ave – Transit Street

- Dominant Species:

- ✓ Mexican Fan Palm
- ✓ Queen Palm



# Primary Street

## Central Ave

- Recommended Tree Palette
  - Primary Tree: Existing Palms
  - Secondary Tree: Australian Willow



# Primary Street

## 41<sup>st</sup> Street – Transit Street

- Dominant Species:

✓ Jacaranda



# Primary Street

## 41<sup>st</sup> Street – Transit Street

- Dominant Species:

✓ Jacaranda

✓ Gold Medallion



# Primary Street

## 41<sup>st</sup> Street – Transit Street

- Dominant Species:

- ✓ Jacaranda
- ✓ Gold Medallion
- ✓ Queen Palm



# Primary Street

## 41<sup>st</sup> Street – Transit Street

- Dominant Species:

- ✓ Jacaranda
- ✓ Gold Medallion
- ✓ Queen Palm
- ~~✗~~ Black Acacia
- ~~✗~~ Purple Leaf Plum
- ~~✗~~ Brazillion Pepper



# Primary Street

## 41<sup>st</sup> Street

- Recommended Tree Palette
  - Primary Tree: Gold Medallion
  - Secondary Tree: Jacaranda





# Primary Street

## Fairmount Ave – Transit Street

- Dominant Species:



Jacaranda



# Primary Street

## Fairmount Ave – Transit Street

- Dominant Species:

- ✓ Jacaranda
- ✓ African Fern Pine



# Primary Street

## Fairmount Ave – Transit

- Dominant Species:

- ✓ Jacaranda
- ✓ African Fern Pine
- ✓ Queen Palm



# Primary Street

## Fairmount Ave – Transit Street

- Dominant Species:

- ✓ Jacaranda
- ✓ African Fern Pine
- ✓ Queen Palm
- ~~✗~~ Carrot Wood
- ~~✗~~ Chinese Elm



# Primary Street

## Fairmount Ave

- Recommended Tree Palette
  - Primary Tree: London Plane
  - Secondary Tree: St. Mary's Magnolia



# Primary Street

## Euclid Ave– Transit Street

- Dominant Species:



Jacaranda



# Primary Street

## Euclid Ave– Transit Street

- Dominant Species:



Jacaranda



Brisbane Box



# Primary Street

## Euclid Ave– Transit Street

- Dominant Species:

- ✓ Jacaranda
- ✓ Brisbane Box
- ✓ Queen Palm





# Primary Street

## Euclid Ave– Transit Street

- Dominant Species:

- ✓ Jacaranda
- ✓ Brisbane Box
- ✓ Queen Palm
- ~~×~~ Carrot Wood
- ~~×~~ Eucalyptus



# Primary Street

## Euclid Ave

- Recommended Tree Palette
  - Primary Tree: California Sycamore
  - Secondary Tree: Coast Live Oak



# Primary Street

## 54<sup>th</sup> Street – Transit Street

- Dominant Species:

✓ Flaxleaf Paperbark



# Primary Street

## 54<sup>th</sup> Street – Transit Street

- Dominant Species:

- ✓ Flaxleaf Paperbark

- ✓ Cajeput Tree



# Primary Street

## 54<sup>th</sup> Street – Transit Street

- Dominant Species:

✓ Flaxleaf Paperbark

✓ Cajeput Tree

~~✗~~ Carob

~~✗~~ Eucalyptus



# Primary Street

## 54<sup>th</sup> Street

- Recommended Tree Palette
  - Primary Tree: Tipu
  - Secondary Tree: Chinese Flame



# Primary Street

## Poplar Street – Transit Street

- Dominant Species:

✓ Queen Palm



# Primary Street

## Poplar Street – Transit Street

- Dominant Species:



Queen Palm



Deodar Cedar





# Primary Street

## Poplar Street – Transit Street

- Dominant Species:

- ✓ Queen Palm
- ✓ Deodar Cedar
- ✓ Incense Cedar



# Primary Street

## Poplar Street

- Dominant Species:

- ✓ Queen Palm
- ✓ Deodar Cedar
- ✓ Incense Cedar
- ~~×~~ Sweet Gum
- ~~×~~ Italian Cypress
- ~~×~~ Cedar
- ~~×~~ Ficus
- ~~×~~ Brazilian Pepper Tree
- ~~×~~ Poplar



# Primary Street

## Poplar Street

- Recommended Tree Palette
  - Primary Tree: Holly Oak
  - Secondary Tree: Strawberry Tree



# Discussion

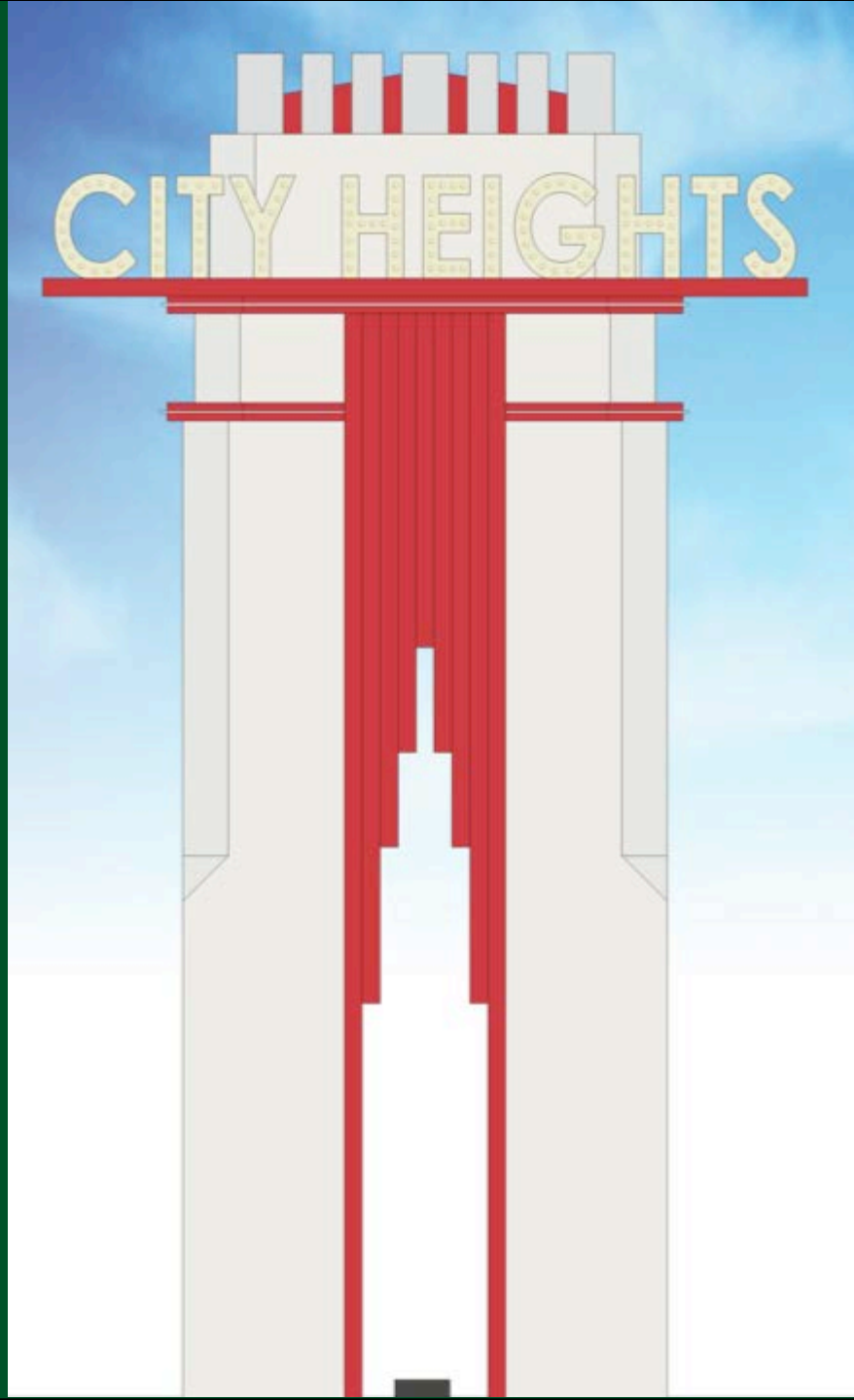
**Are there any specific streets you'd like to talk about?**

**Are there any concerns about species?**

# **CITY HEIGHTS URBAN GREENING NEXT STEPS**

- **Draft Street Tree Master Plan**
- **Workshop 3: Draft Review & Comment**
- **Draft Plan**
- **Comment & Review Period**
- **Final Plan**

# Pilot Projects



9'-0"

# CITY HEIGHTS

25'-0"



FRONT/BACK VIEW

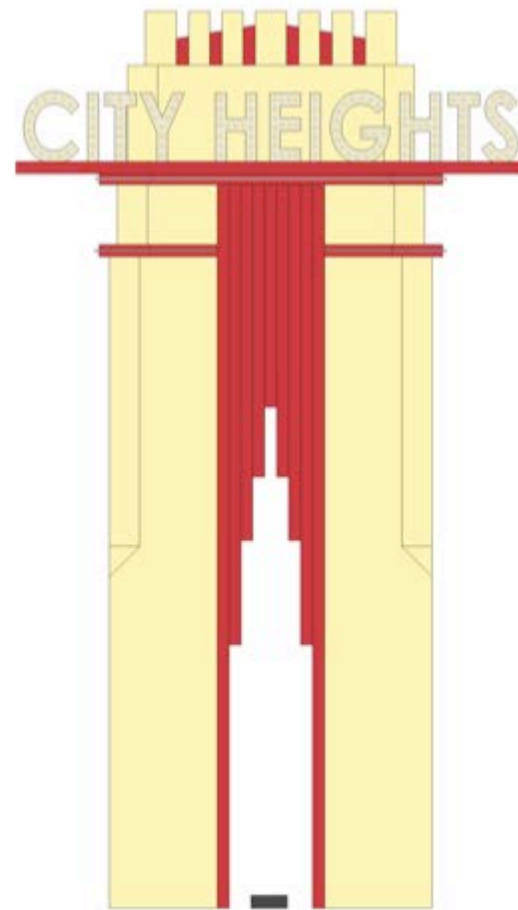
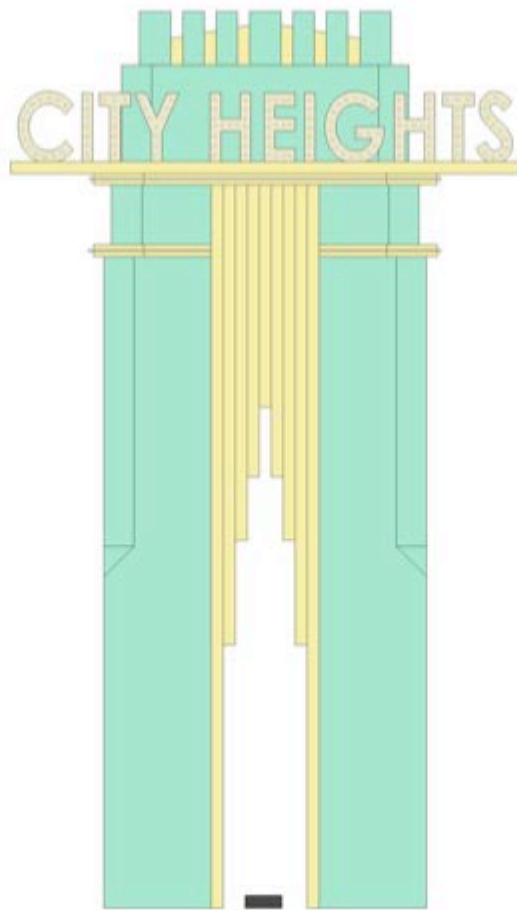
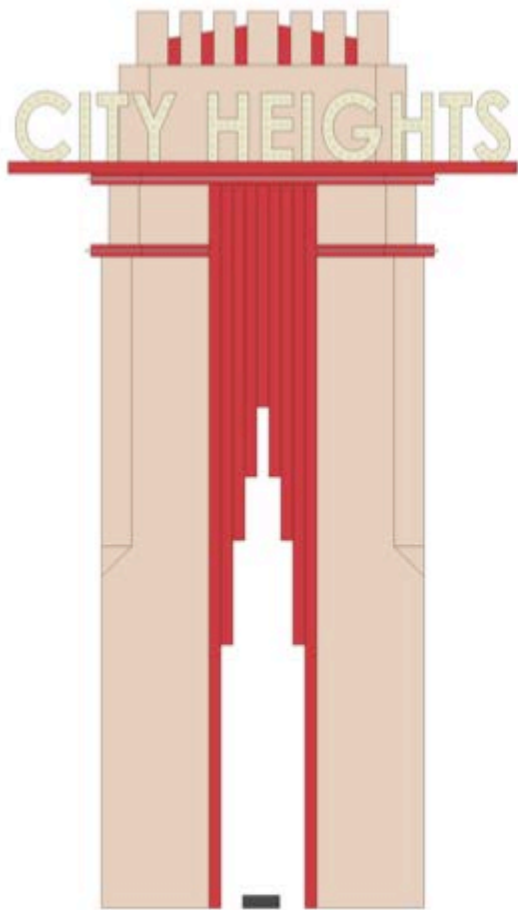
SCALE: 3/8" = 1'-0"



SIDE VIEW

SCALE: 3/8" = 1'-0"

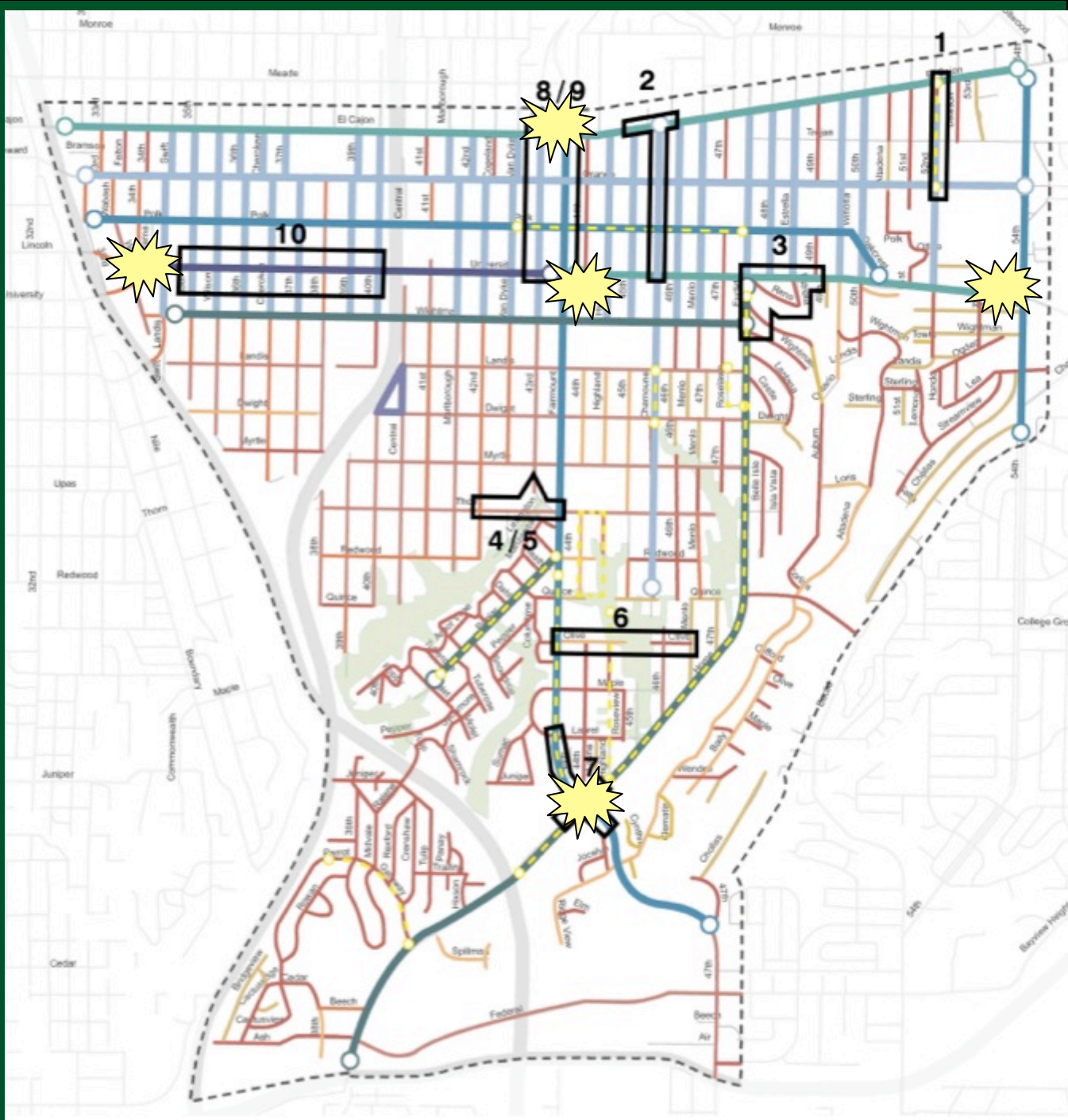
# Pilot Projects



COLOR OPTIONS



# Pilot Projects



# University & Wabash



# University & 54th



# Fairmount & Home



# Fairmount & El Cajon Blvd

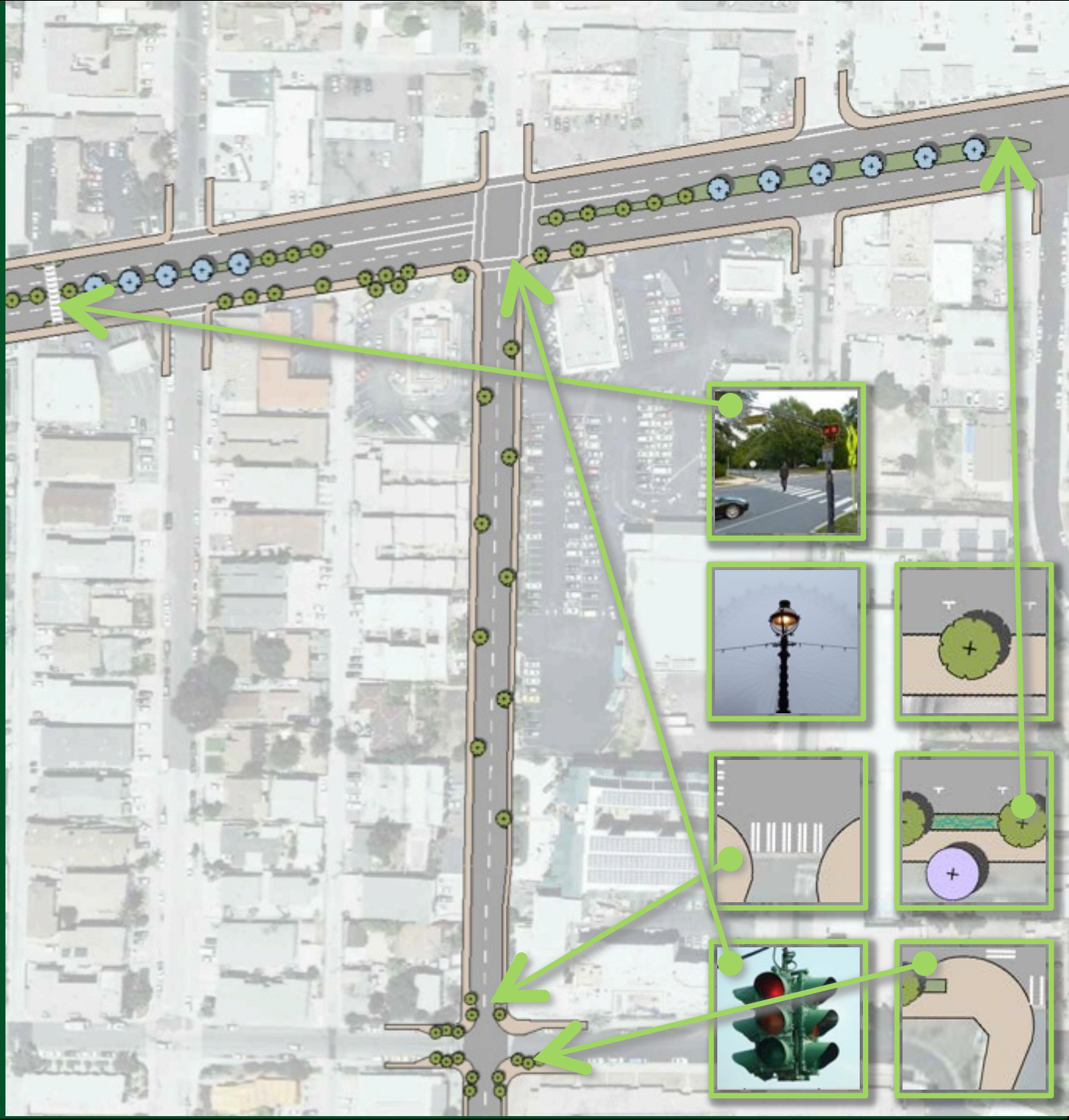


# Near University & Fairmount



# Pilot Projects

1. 52<sup>nd</sup> ST
  - Added planted median
  - Planting pop outs to narrow roadway
  - Bulb outs at intersection to narrow crossing distance

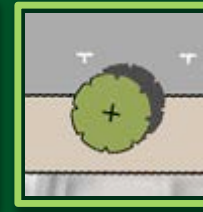
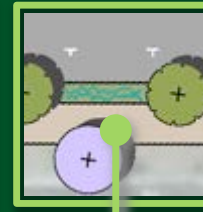
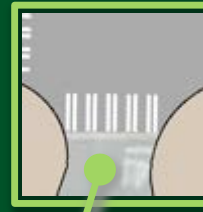


# Pilot Projects

2. Chamoune Ave & El Cajon Blvd

- Bulb outs at Chamoune & El Cajon Blvd

- Full Signal & Bulb outs at 45th St

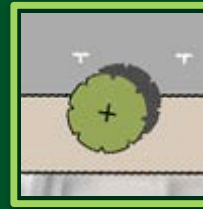
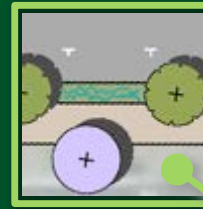
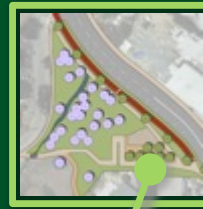




# Pilot Projects

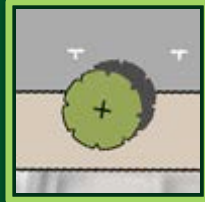
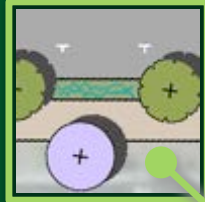
6. Olive between Fairmount and Menlo

- Connect Olive thru the canyon
- Allow access along Menlo



# Pilot Projects

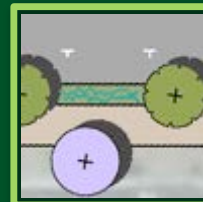
- 7. Fairmount between Laurel and Home
- Lane diet to accommodate a planted median
- Public space on east side of Fairmount
- Entry Opportunity



# Pilot Projects

8. 43<sup>rd</sup> as a one way street
9. Fairmount as a one way street

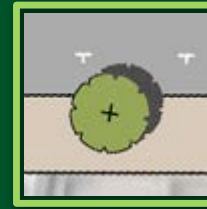
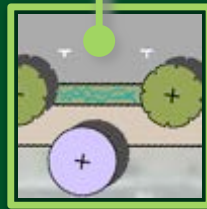
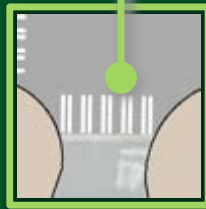
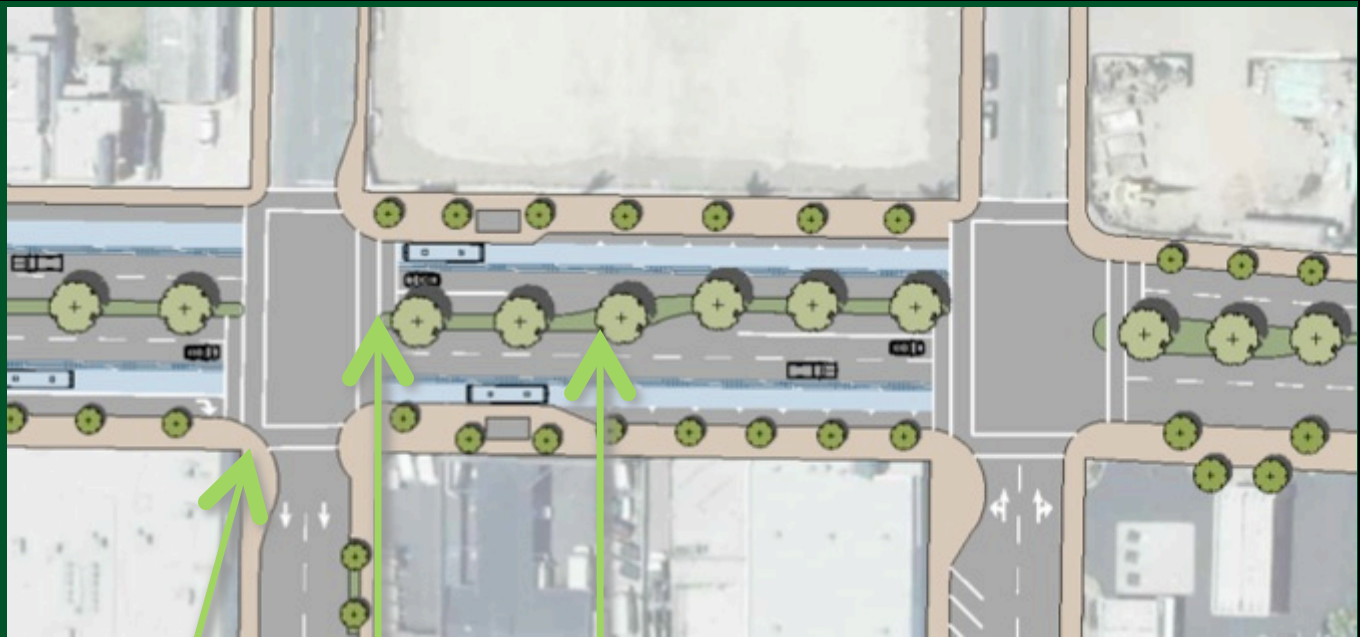
- One way in each direction
- Two lanes of travel
- On-street parking
- Class II on Fairmount
- Class III on 43<sup>rd</sup>



# Pilot Projects

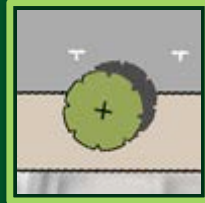
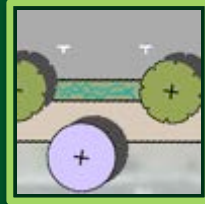
8/9

- BRT on El Cajon Blvd



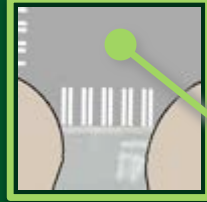
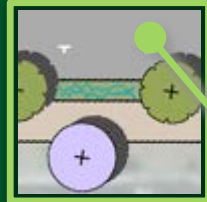
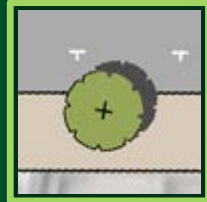
# Pilot Projects

8. 43<sup>rd</sup> as a one way street
9. Fairmount as a one way street



# Pilot Projects

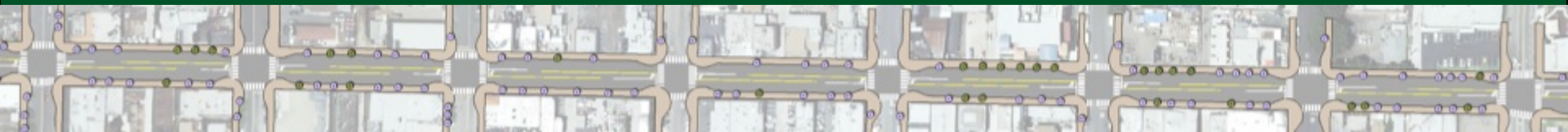
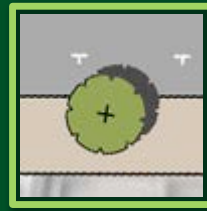
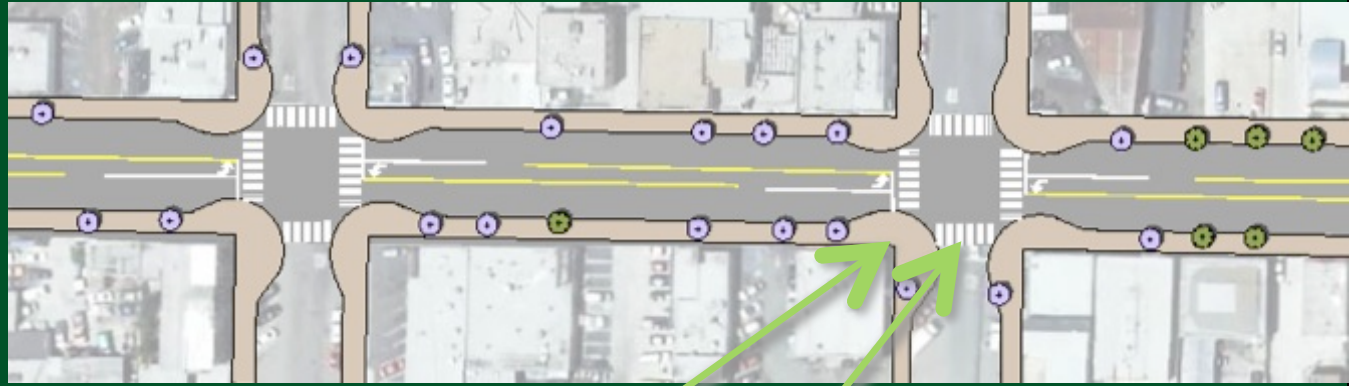
8/9



# Pilot Projects

## 10. University Ave (Mercado District)

- Lane diet to accommodate a planted median
- Public space on east side of Fairmount
- Entry Opportunity



# Secondary Street

## Cherokee Ave – Bike Connector

- Dominant Species:



Queen Palm



Mexican Fan Palm



Oleander





# Secondary Street

## 43<sup>rd</sup> Street – Bike Connector

- Dominant Species:

- ✓ Queen Palm
- ~~✗~~ Mexican Fan Palm
- ~~✗~~ Date Palm
- ~~✗~~ Carrot Wood



# Secondary Street

## Euclid Ave (between Home/Chollas) – Bike Connector

- Dominant Species: None

