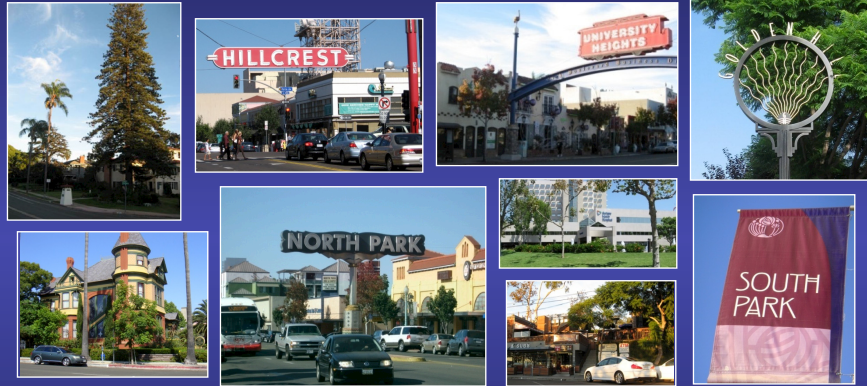


## Uptown-North Park-Greater Golden Hill Community Plan Updates



Workshop & Cluster Update Meeting  
Hall of Champions, Balboa Park  
March 20, 2010



City Planning & Community Investment Department

## Introduction City Staff

### City Planning & Community Investment

Bill Anderson, Director, CPCI

Mary Wright, Deputy Director – Planning Division

Bernard Turgeon, Project Manager

Marlon Pangilinan, Project Manager

Bennur Koksuz, Deputy Director – Urban Form Division

Cathy Winterrowd, Principal Planner – Historical & Natural Resources

Jennifer Hirsch, Senior Planner

Todd Schmit, Park Designer

# Introduction

## Project Consultants

### Public Outreach and Facilitation

Catherine Smith, Collaborative Services, Inc.  
Destree Lazo Bascos, Collaborative Services, Inc.  
Kristina Meek, Collaborative Services, Inc.

### Urban Design

Mike Singleton, KTU+A	Diego Velasco, M.W. Steele Group
Robert Efirid, KTU+A	Stephen Hammond, WRT
Mark Steele, M.W. Steele Group	Matthew Priest, WRT

### Transportation

Dave Sorenson, Kimley-Horn & Associates

### Historic Survey

Christy McAvoy, Historic Resources Group

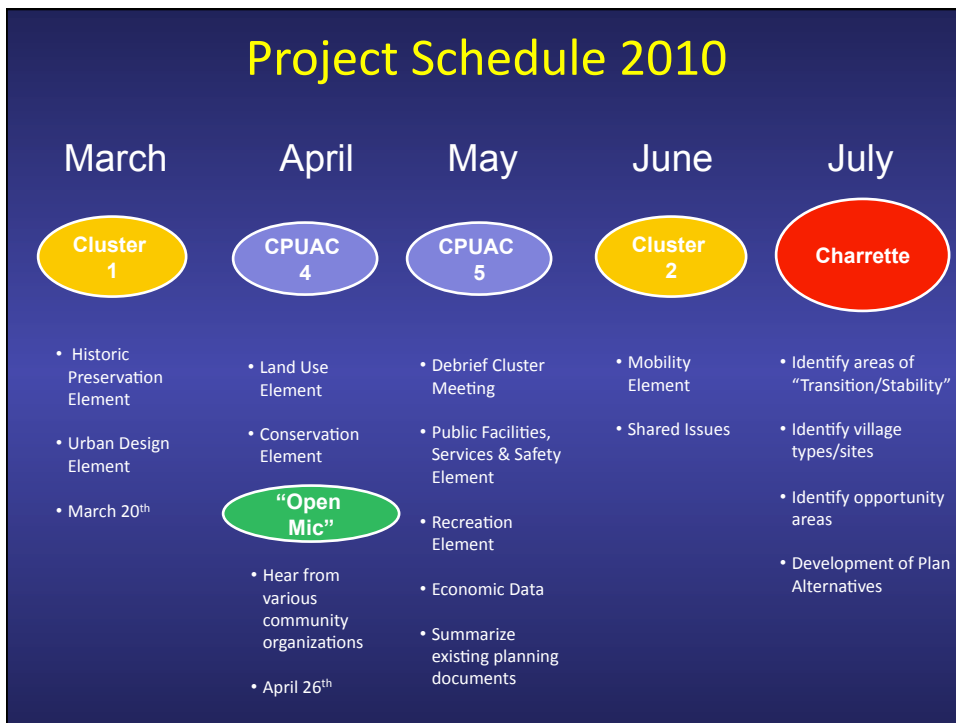
## Agenda

- |   |       |
|---|-------|
| A. Introduction & Project Update                          | 9:00  |
| B. Existing Community Structure & Urban Form              | 9:05  |
| • Land Form & Open Space, Mobility & Built Form           |       |
| 1. Golden Hill ( <i>Diego Velasco, MW Steele Group</i> )  |       |
| 2. North Park ( <i>Mike Singleton, KTU+A</i> )            |       |
| 3. Uptown ( <i>Steve Hammond, WRT</i> )                   |       |
| Community questions & comments                            |       |
| C. Historic Resources                                     | 10:00 |
| 1. Overview of historic resource surveys                  |       |
| 2. Scope of current surveys                               |       |
| 3. Historic Context Statement – themes and property types |       |
| Community question & comments                             |       |
| BREAK ( <i>15 minutes</i> )                               | 10:45 |

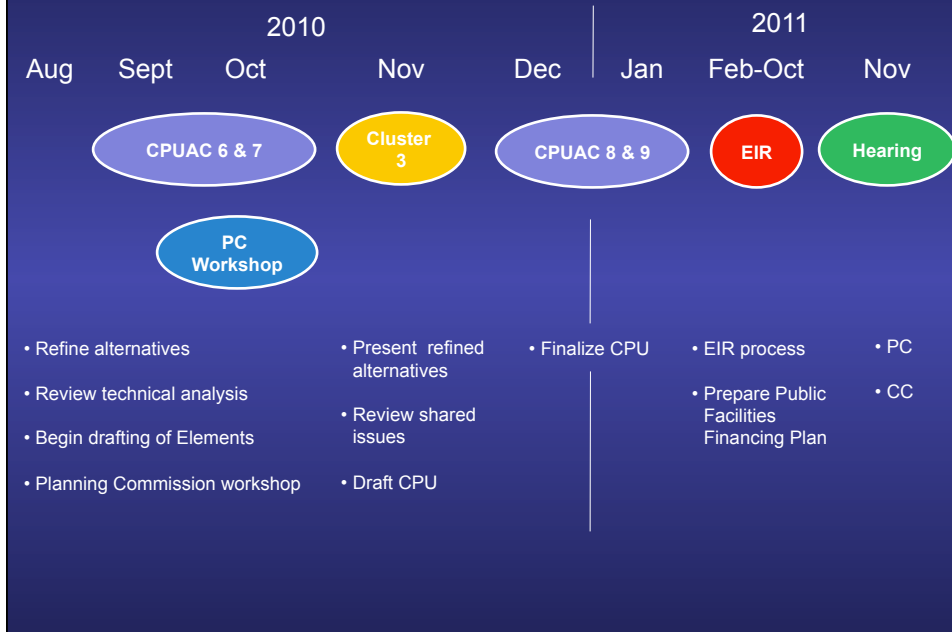
## Agenda (Continued)

A. Best Practices – Urban Design Toolkit	11:00
<ol style="list-style-type: none"> <li>1. Open space and canyons</li> <li>2. Public spaces and recreation</li> <li>3. Complete streets</li> <li>4. Parking</li> <li>5. Major corridor design</li> <li>6. Contextual design</li> </ol>	
Community questions & comment	
B. Introduce Community Workshop Exercise (5 minutes)	12:25
BREAK ( <i>Pick up lunch – 15 minutes</i> )	12:30
A. Workshop Exercise with Break-out Groups	12:45
<ol style="list-style-type: none"> <li>1. Community-based discussion groups</li> <li>2. Group report-back</li> </ol>	
B. Next Steps (5 minutes)	1:55
Conclusion	2:00

## Project Schedule 2010



## Project Schedule (continued)



## General Plan Guiding Principles

1. An **open space network** formed by parks, canyons, river valleys, habitats, beaches, and oceans;
2. **Diverse residential communities** formed by the open space network;
3. Compact and **walkable mixed-use villages** of different scales within communities;
4. Employment centers for a **strong economy**;
5. An integrated regional **transportation network** of transit, roadways, and freeways that efficiently link communities and villages to each other and to employment centers;
6. High quality, affordable, and well-maintained **public facilities** to serve the City's population, workers, and visitors;
7. **Historic districts and sites** that respect our heritage;
8. **Balanced communities** that offer opportunities for all San Diegans and share citywide responsibilities;
9. A clean and **sustainable environment**; and
10. A **high aesthetic standard**.

