
APPENDICES

Appendix A – Ancillary Documents

Appendix B – Bikeway Facilities Classifications

Appendix D – Traffic Calming Devices

APPENDIX A – ANCILLARY DOCUMENTS

Adams Avenue Master Plan - Master Plan for Commercial Revitalization of Adams Avenue, Barret Consulting/Marum Associates, 1992.

Adams Avenue Parking Study, Adams Avenue Business Association, August 1985.

Affordable Housing: Creating More Livable Communities, Report on Conference Proceedings, San Diego Housing Commission and Others, March 1, 1991.

An Economic Development Strategy for the City Heights Commercial Area, Michael Jenkins, MPA, JD, March 1986.

(Draft) Chollas Canyon Improvement Project Master Plan Summary, PELA Landscape Architects, February 1994.

Chollas Creek Engineering Report, Barry Consulting Group, October 15, 1993.

City Heights Redevelopment Plan, Redevelopment Agency of the City of San Diego, April 28, 1992.

Creating Affordable Housing for San Diegans, The San Diego Housing Trust Fund Task Force, September 1989.

Crime Prevention Through Environmental Design.

The Design Study for the Commercial Revitalization of El Cajon Boulevard, Land Studio, no date.

Design Manual for the Normal Heights Demonstration Area and the City Heights Demonstration Area, HCH Associates/Gary Coad, April 1984.

Economic Analysis of the Mid-City Community, Goodkin/Criterion, October 1983.

Historical Greater Mid-City San Diego Preservation Strategy, Milford Wayne Donaldson, FAIA, Inc., January 8, 1997

Master Plan Report for the University Avenue Improvement Project, Estrada Land Planning, September 1993.

Mid-City Business Survey, Williams-Kuelbelbeck & Associates, Inc. June 14, 1983.

Mid-City & North Park Revitalization Plan, Gary Rose Weber for the City of San Diego Planning Department, November 1988.

Mid-City Redevelopment Feasibility Study, Economic Research Associates, April 1988.

Mountain View District: A Re-Building Plan for Normal Heights, Community Design Assistance Team, July 30, 1985.

Oak Park/Webster Commercial Area Revitalization Study, Volumes 1, 2 & 3, Quinney & Associates/Estrada Land Planning, March 1988.

Parking Analysis for the Mid-City Revitalization Study, Land Studio/Stephen George and Associates, April 1987.

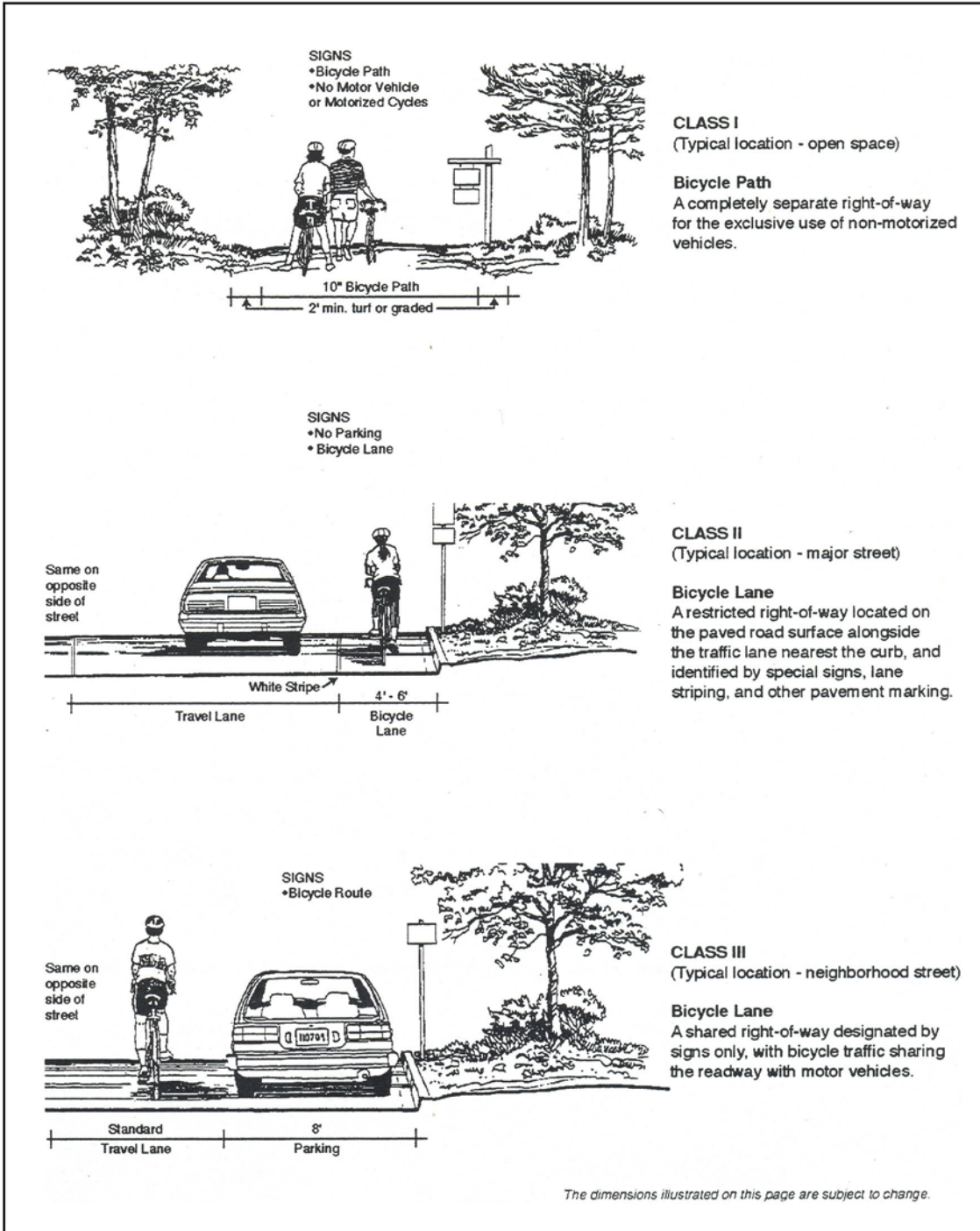
Problem Properties – A Profile of Residential Deterioration in the City Heights Community, JoEllen Anderson for San Diego Neighborhood Housing Services, Inc. March 1988.

Physical Rehabilitation Guidelines, Gary Rose Weber for the City of San Diego Planning Department, 1989.

Report on the Village Charette: Azalea and Hollywood Park Neighborhoods, Mrs. Myrtle Akili, REDD Coordinating and Consulting, January 1997.

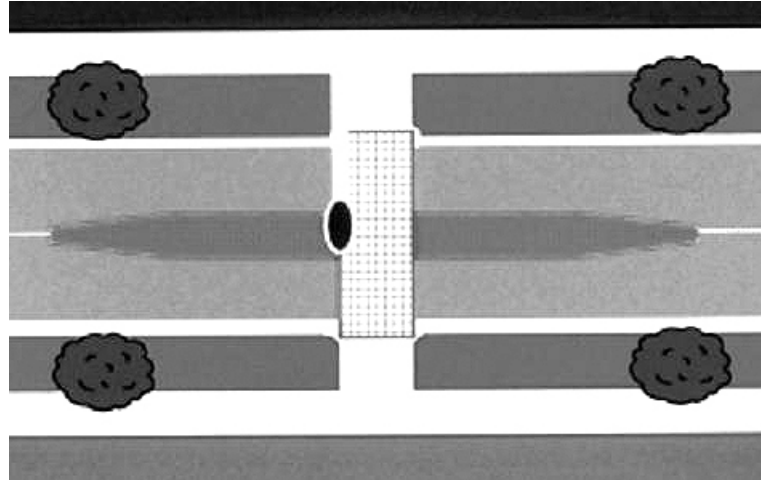
Zoning & Land Use in One of San Diego's Older Urban Areas, JoEllen Anderson for San Diego Neighborhood Housing Services and the City Heights Community Development Corporation, July 1988.

APPENDIX B – BIKEWAY FACILITIES CLASSIFICATIONS



APPENDIX D – TRAFFIC CALMING DEVICES

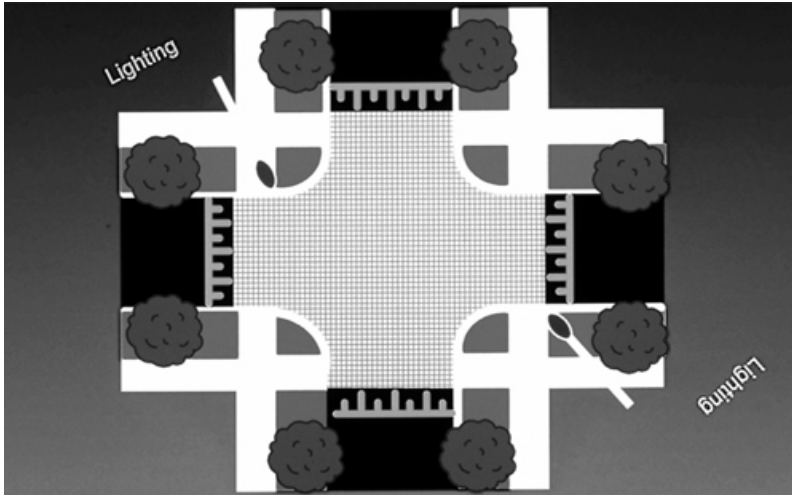
By Michael Wallwork, P.E., and Dan Burden



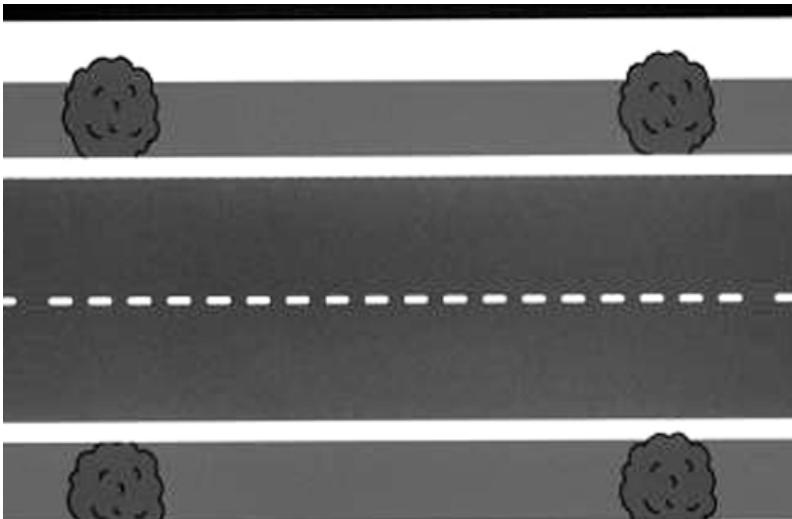
TRAFFIC CALMING DEVICES

Often, neighborhood traffic control problems are solved by relatively low-cost devices. A range of devices is available. Their benefits and effectiveness depend on their frequency of application, where they are used and the problem they are intended to reduce. Often a single device is not adequate to solve a problem and a series of devices are usually necessary.

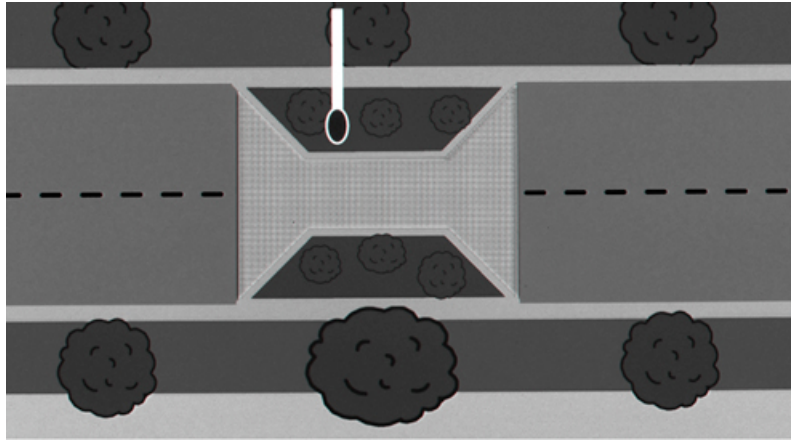
INTERSECTION HUMP



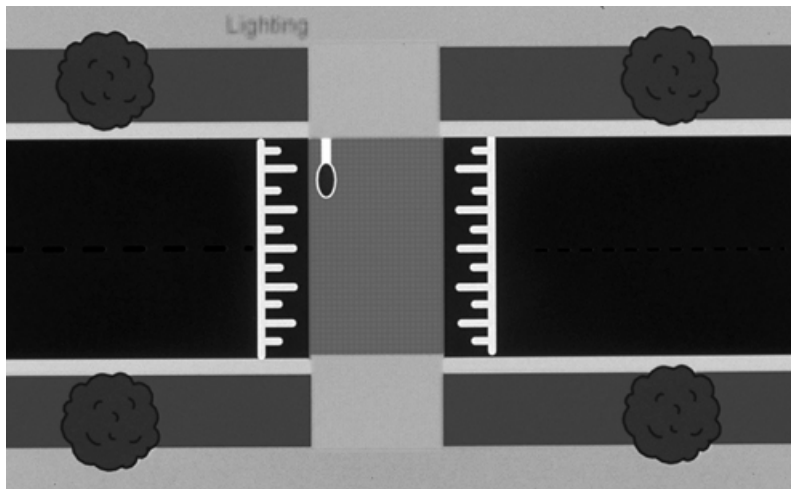
LANDSCAPED ROADWAY



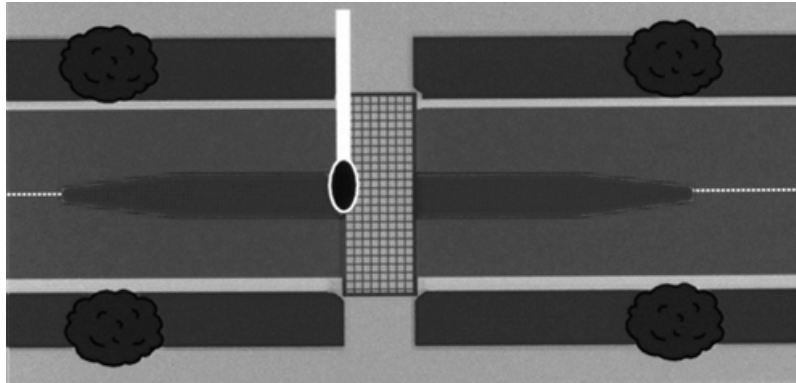
ONE-WAY SPEED HUMP, SLOW POINT



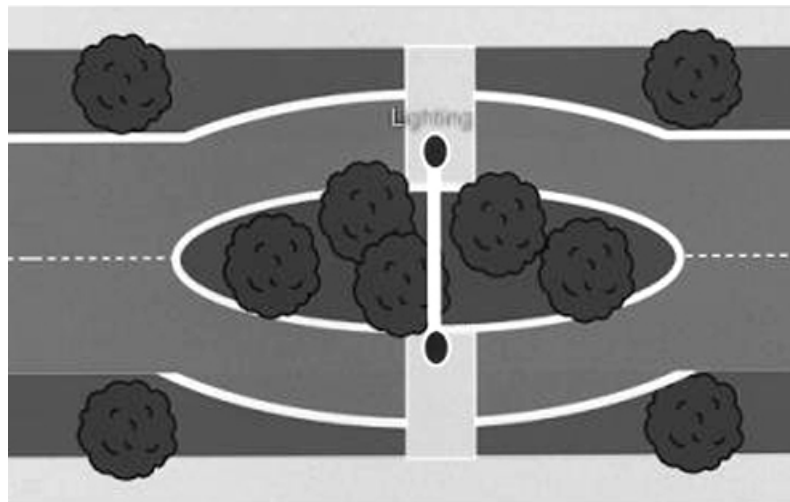
SPEED TABLE



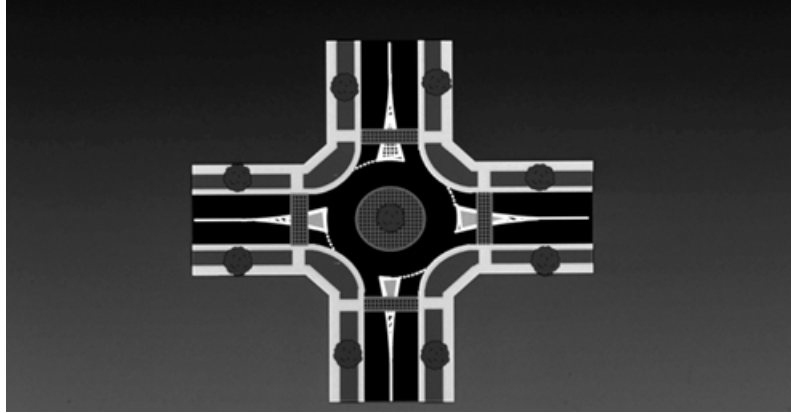
PEDESTRIAN SPEED TABLE AND MEDIAN REFUGE



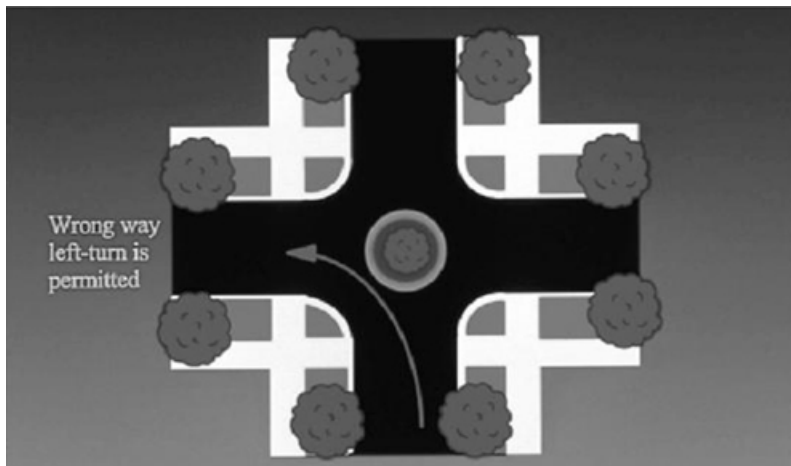
SHORT MEDIAN



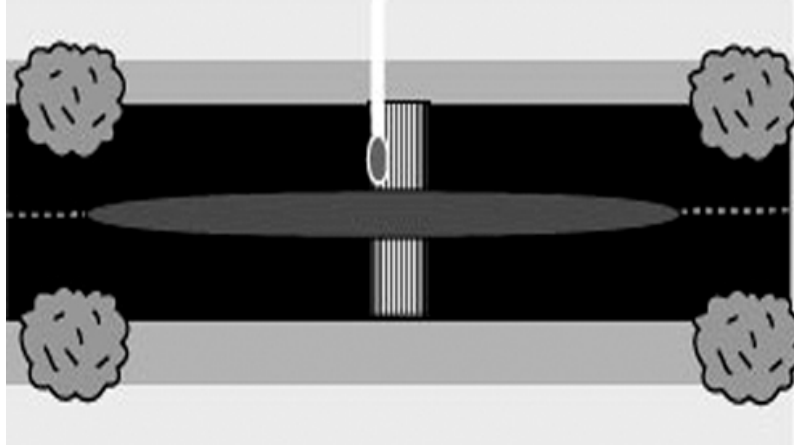
ROUNDAABOUT



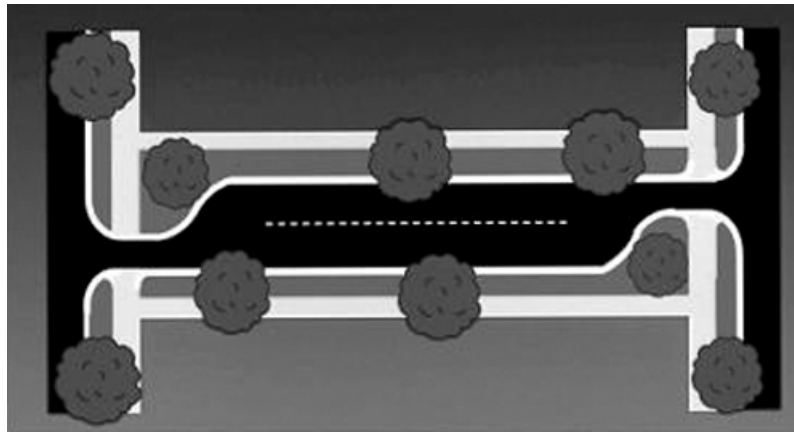
MINI-TRAFFIC CIRCLE



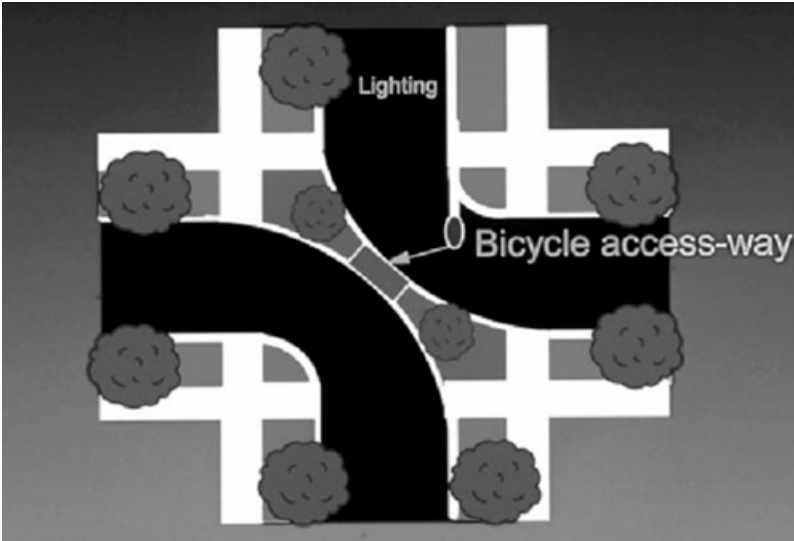
SLOW POINT WITH SPEED HUMP



MODIFIED STREET DESIGN



DIAGONAL DIVERTER



STAR DIVERTER

