

San Ysidro Land Port of Entry  
Border Liaison Mechanism  
October 7, 2008



## *San Ysidro POE: Existing Facility*





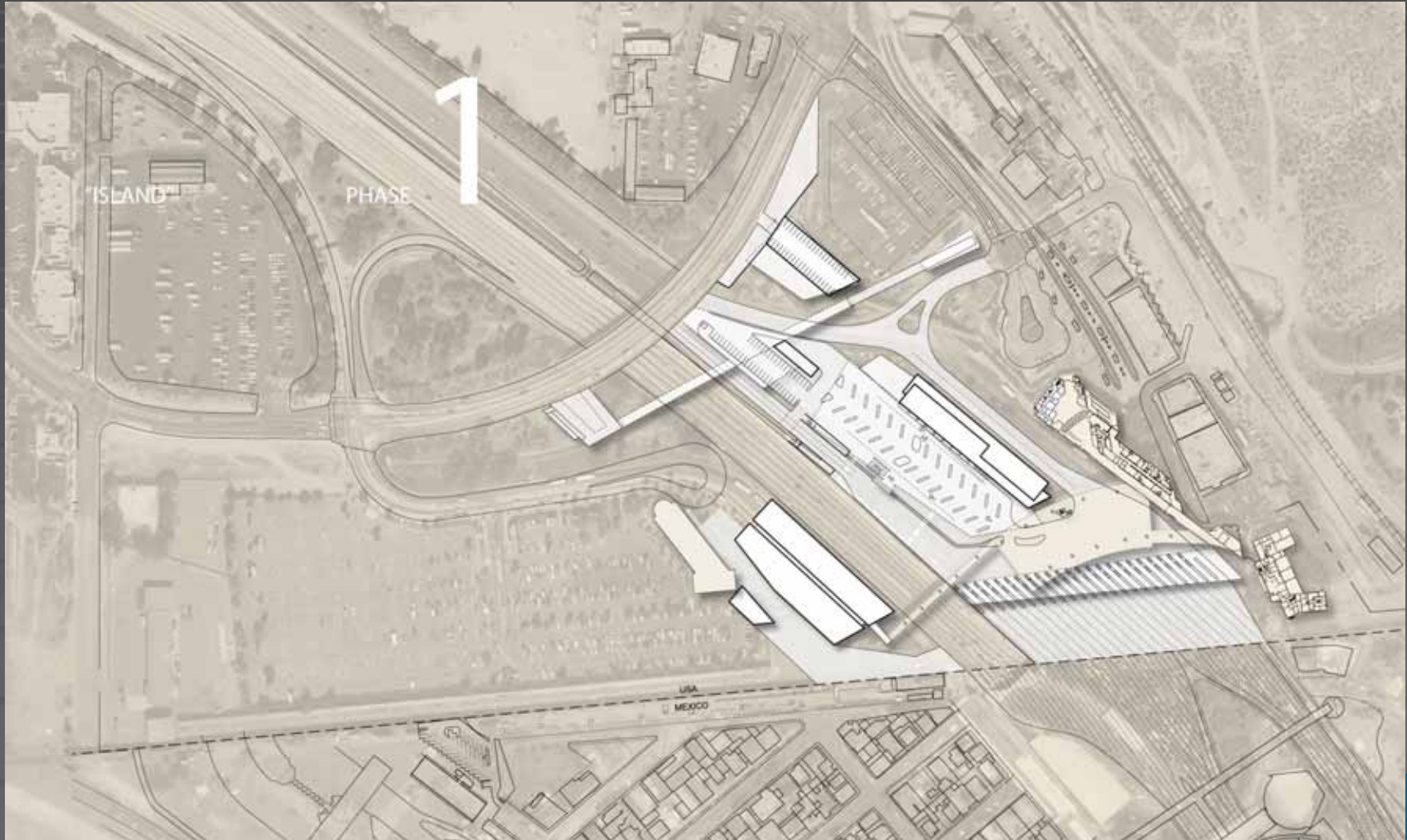


## *Implementation: Three Project Phases*

### Phasing Plan

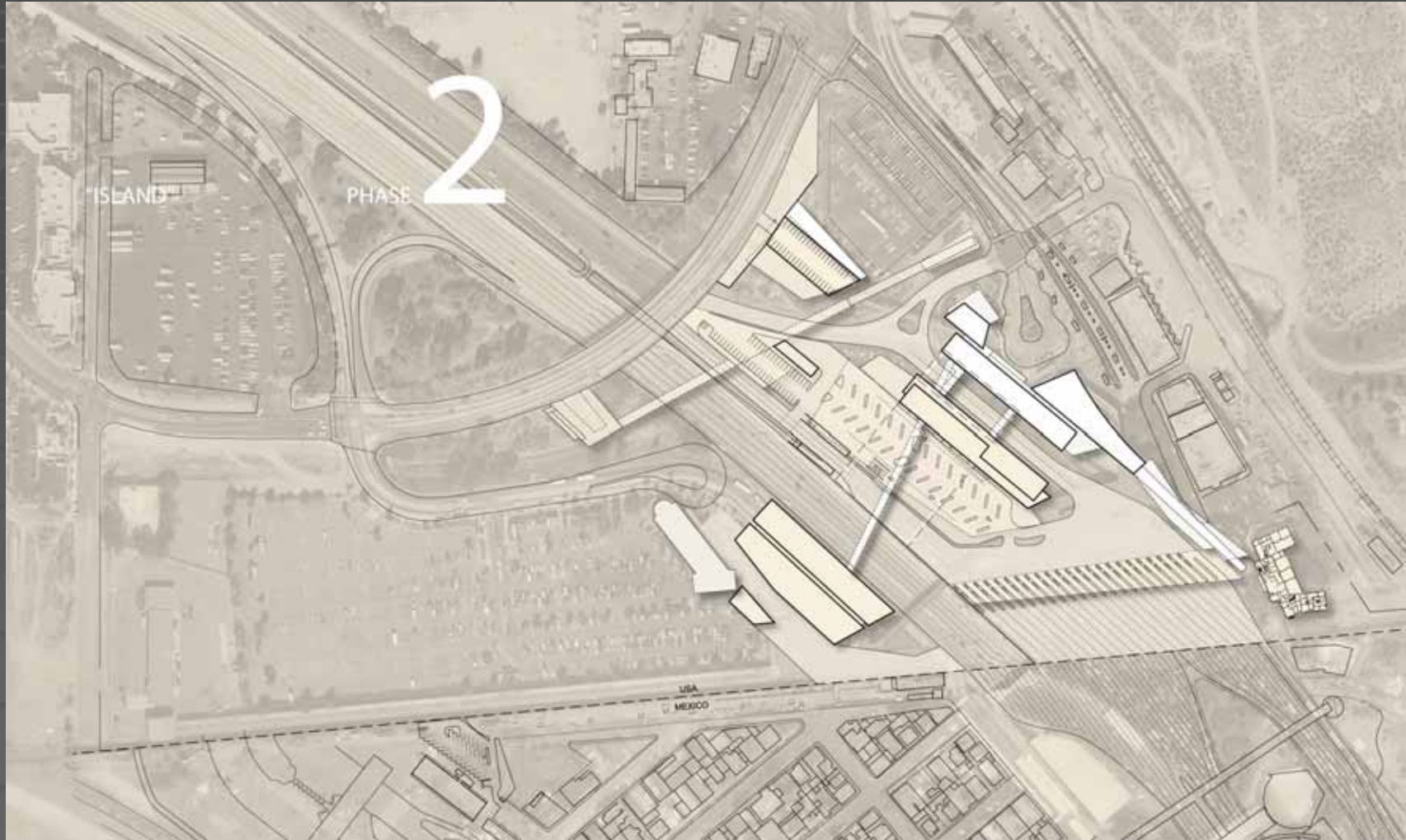
- Each “Implementation Phase” must be independent and fully functional:
  - Phase 1: Northbound Capacity – Increase throughput and reduce wait times
  - Phase 2: Northbound Buildings – Improve CBP facilities
  - Phase 3: Southbound Facility – Connect southbound roadway to Mexico’s El Chaparral facility
- Separate funding to be requested for each proposed project phase

# *Island Scheme – Phase 1*

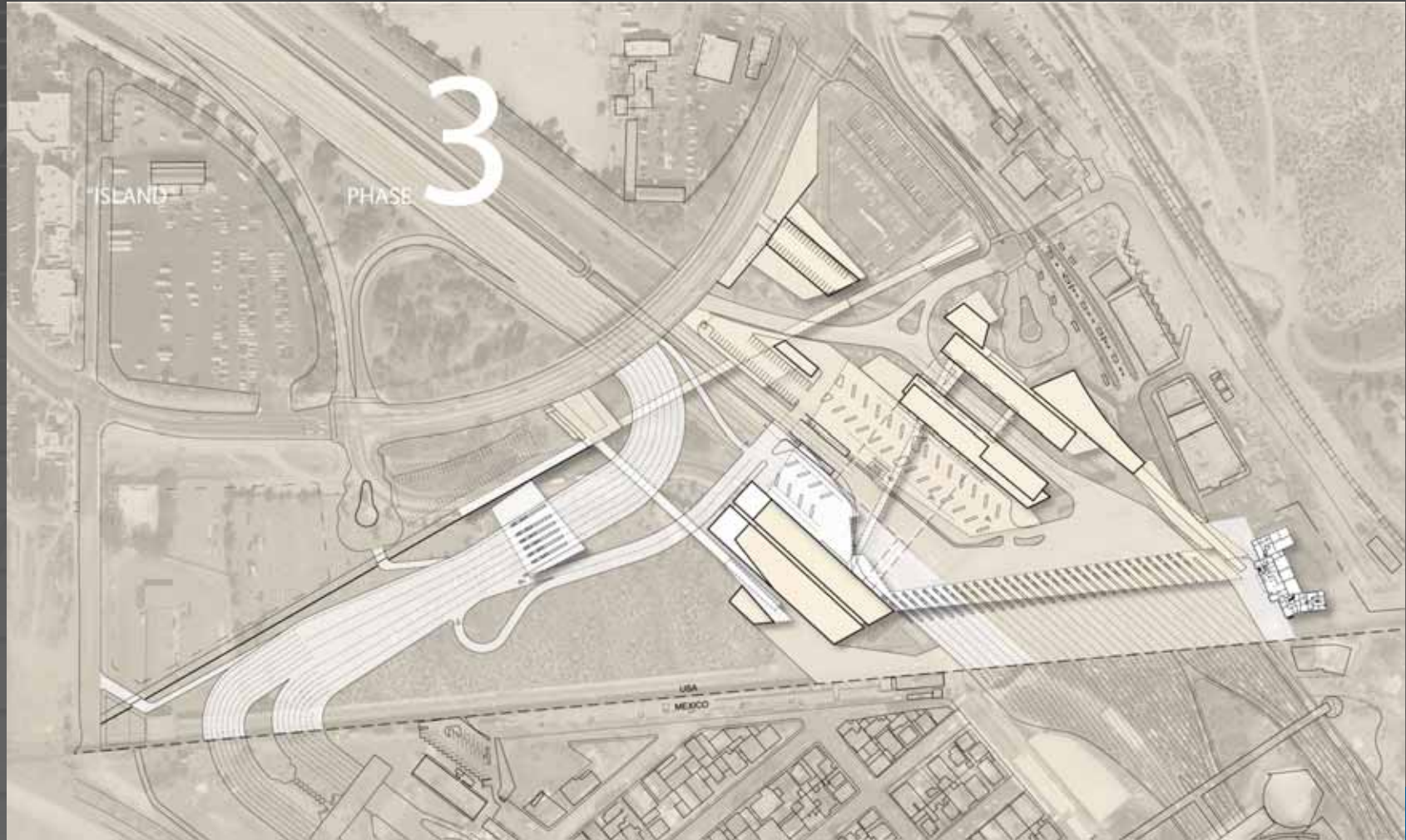




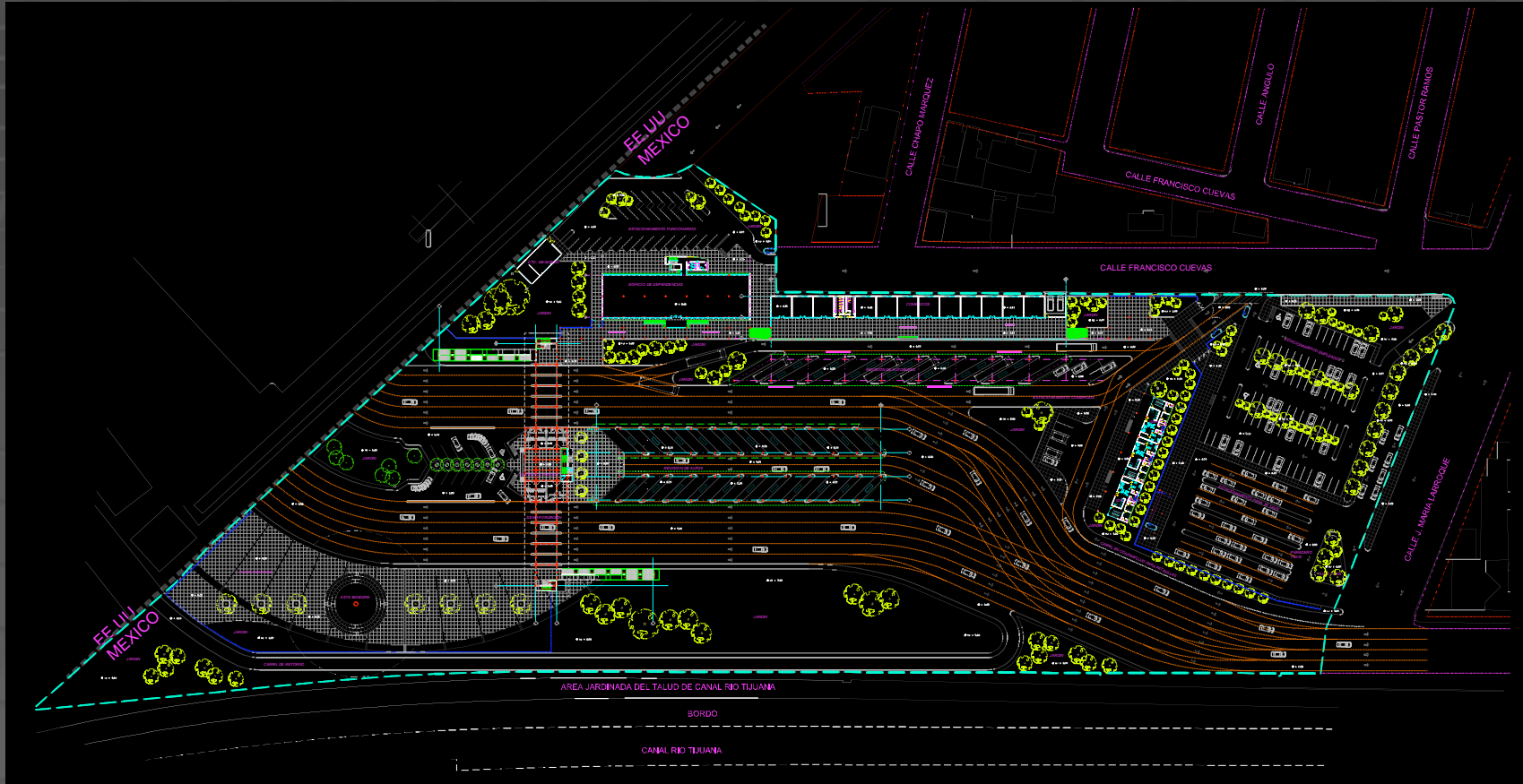
## *Island Scheme – Phase 2*



# *Island Scheme – Phase 3*



# El Chaparral Coordination







## *Traffic Study Update*

Draft Study for Review

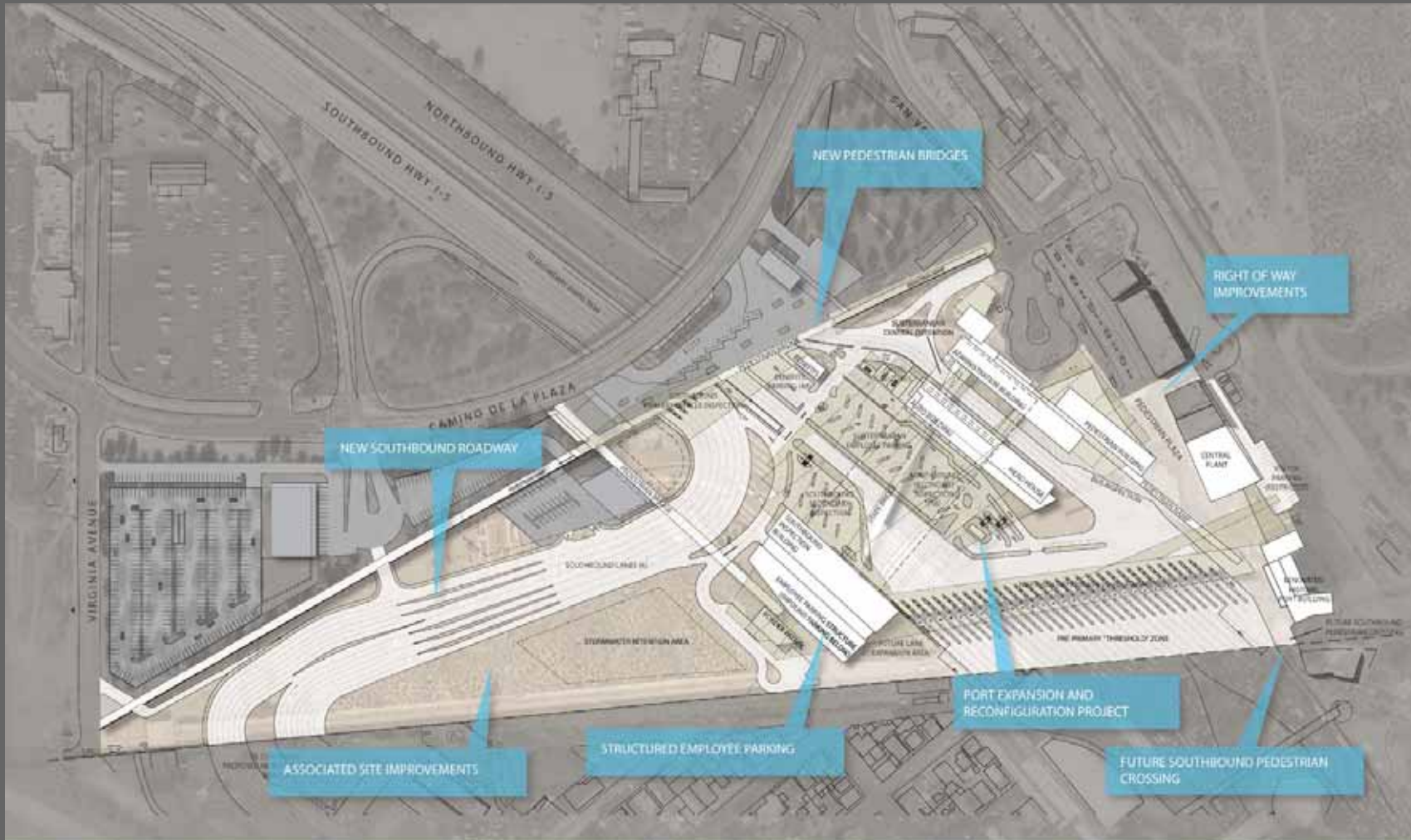
November 2008

Final Study

February 2009 (E)

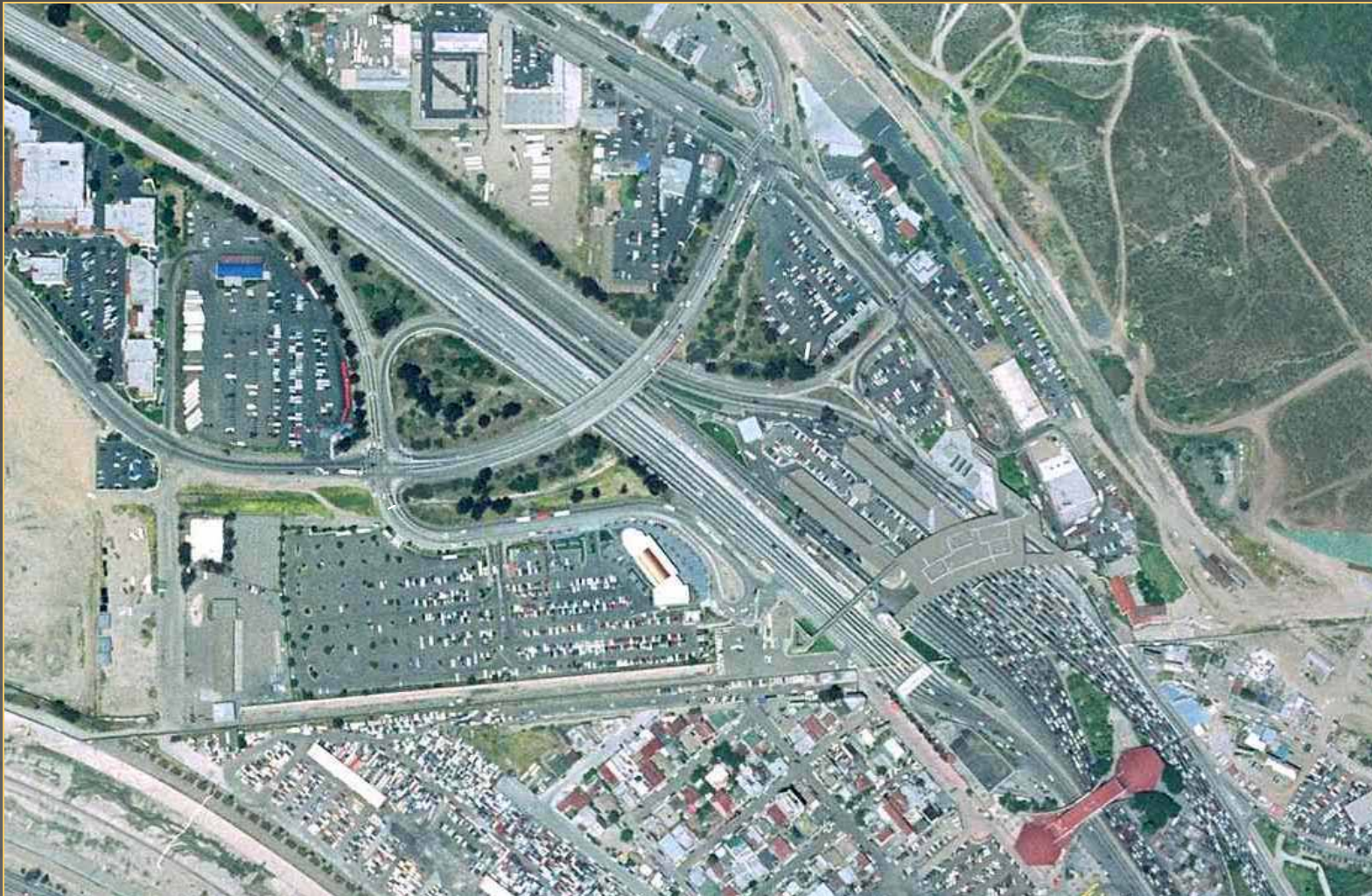
Recommendations







# *San Ysidro POE: Site Acquisition*





# *San Ysidro LPOE: Site Acquisition*



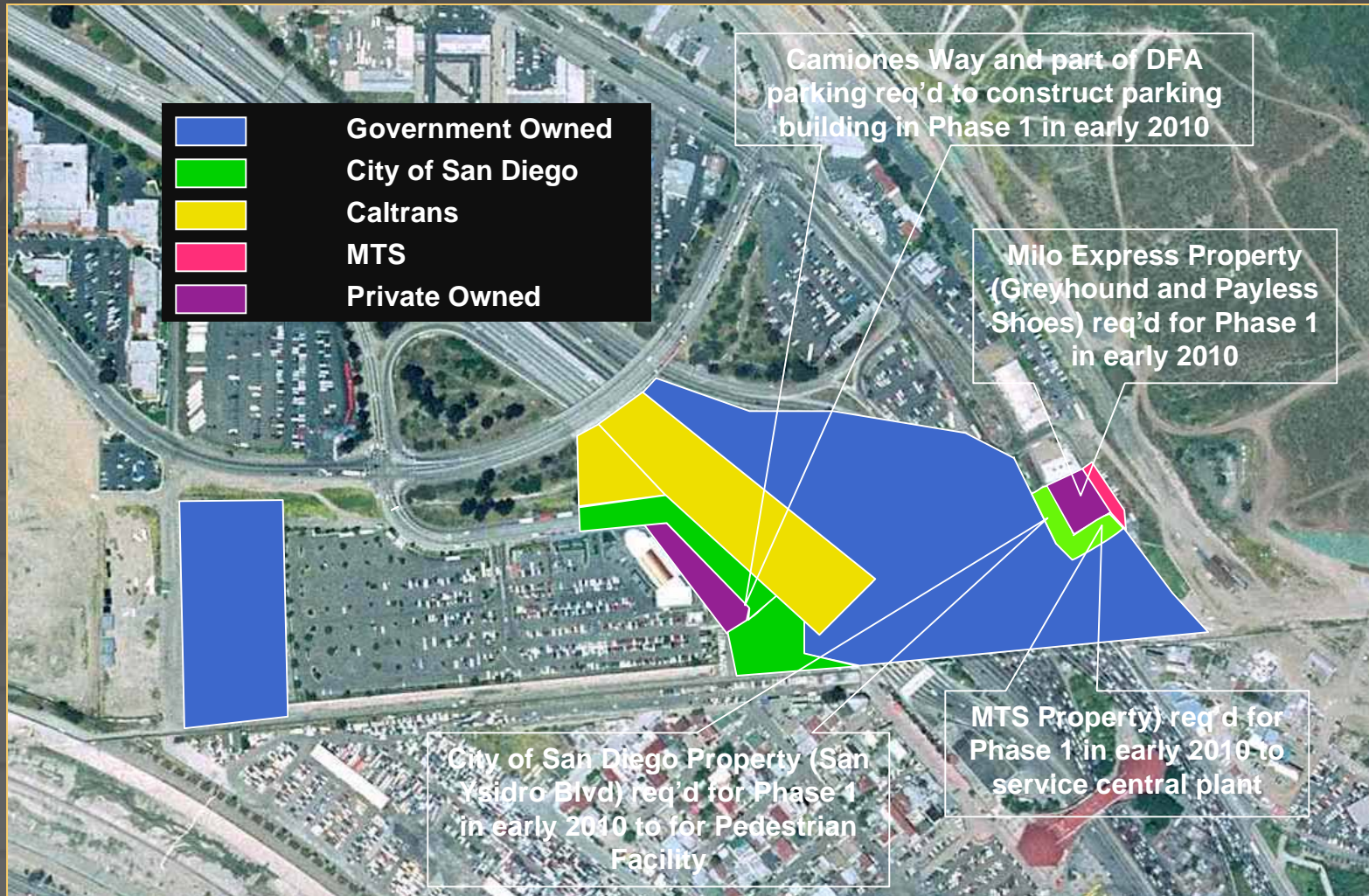


# *San Ysidro LPOE: Site Acquisition*



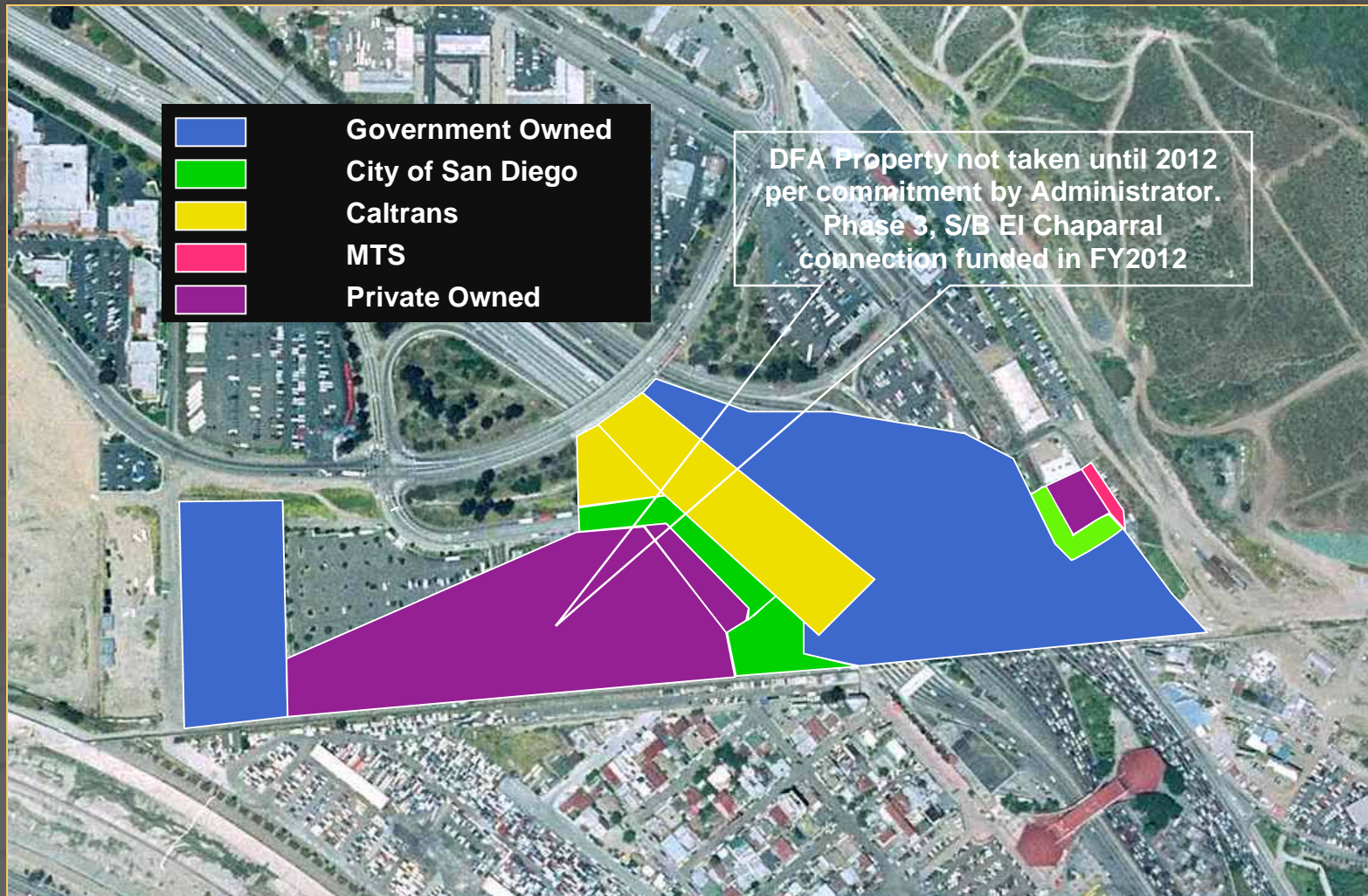


# San Ysidro LPOE: Site Acquisition



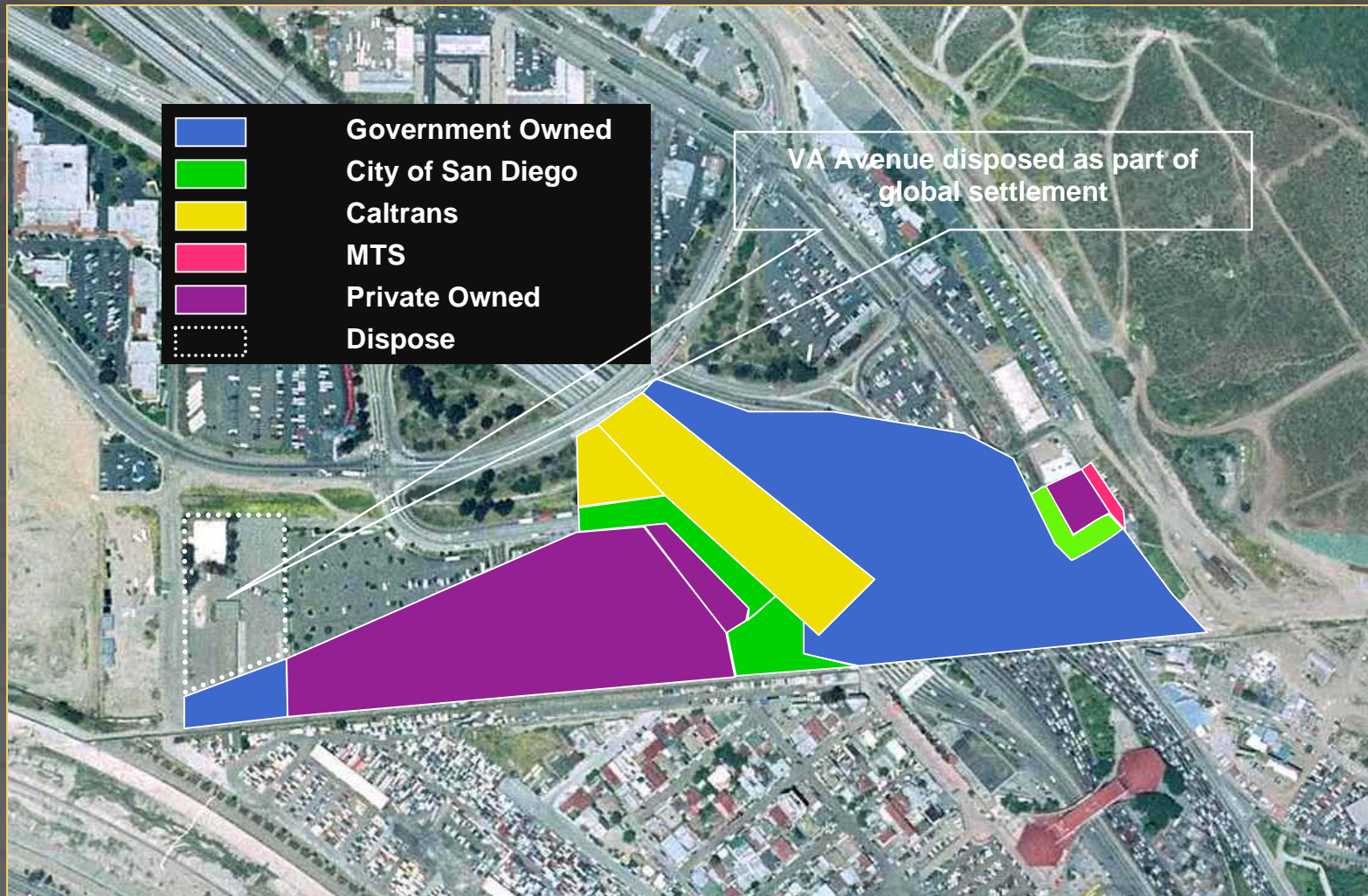


# *San Ysidro LPOE: Site Acquisition*





# *San Ysidro LPOE: Site Acquisition*



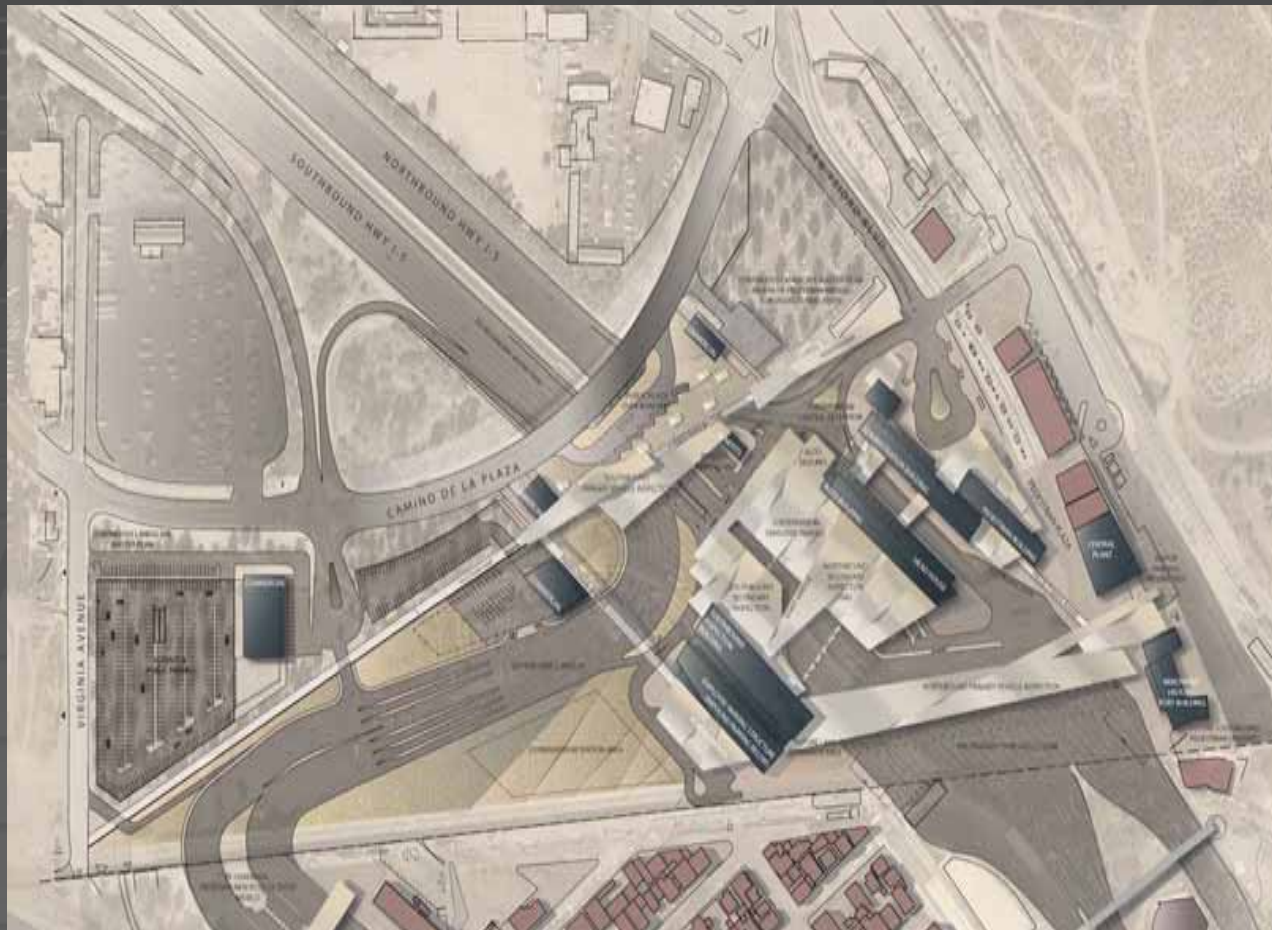


# *San Ysidro POE: Site Acquisition*



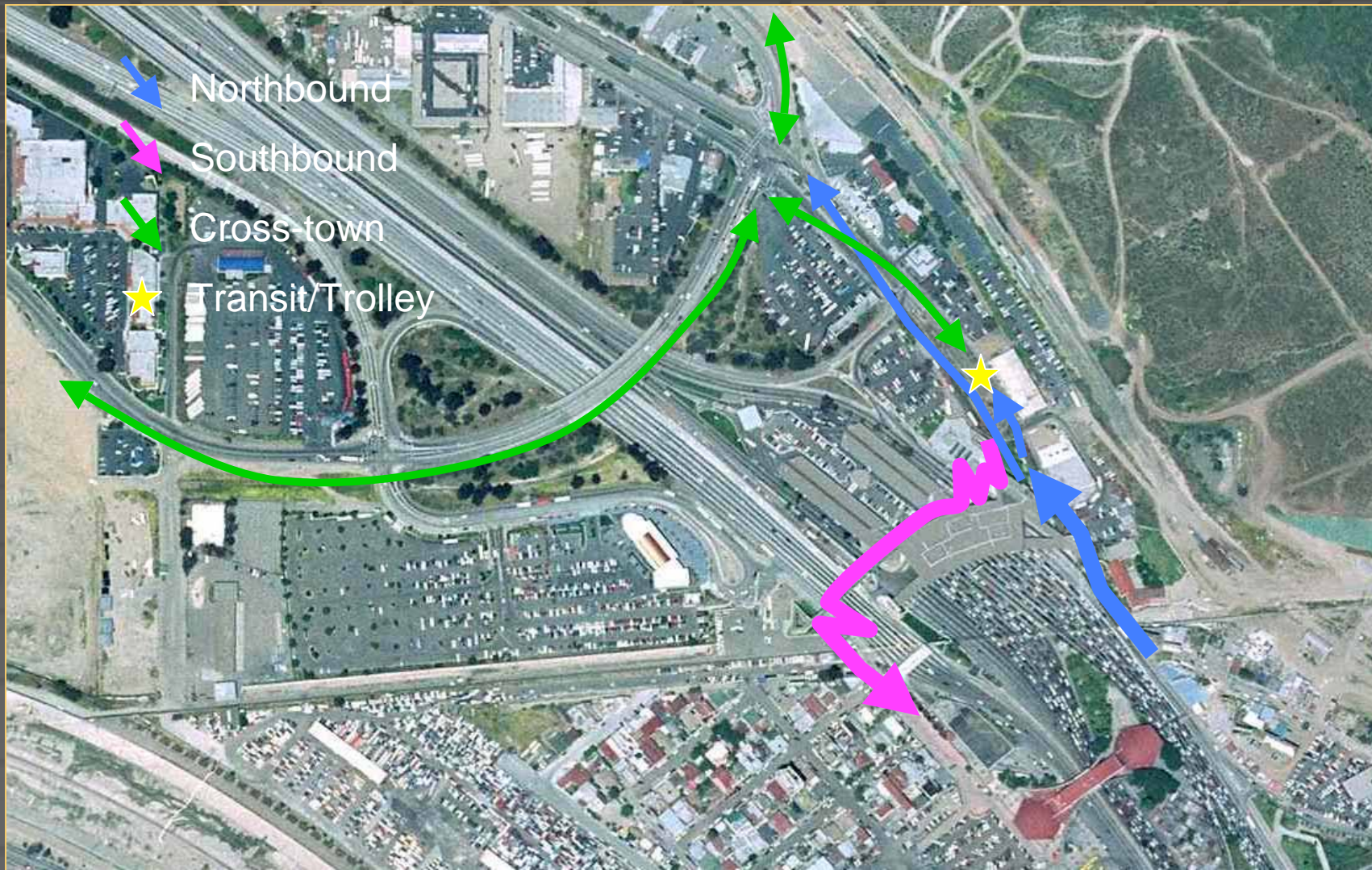


# *San Ysidro POE: Site Acquisition*



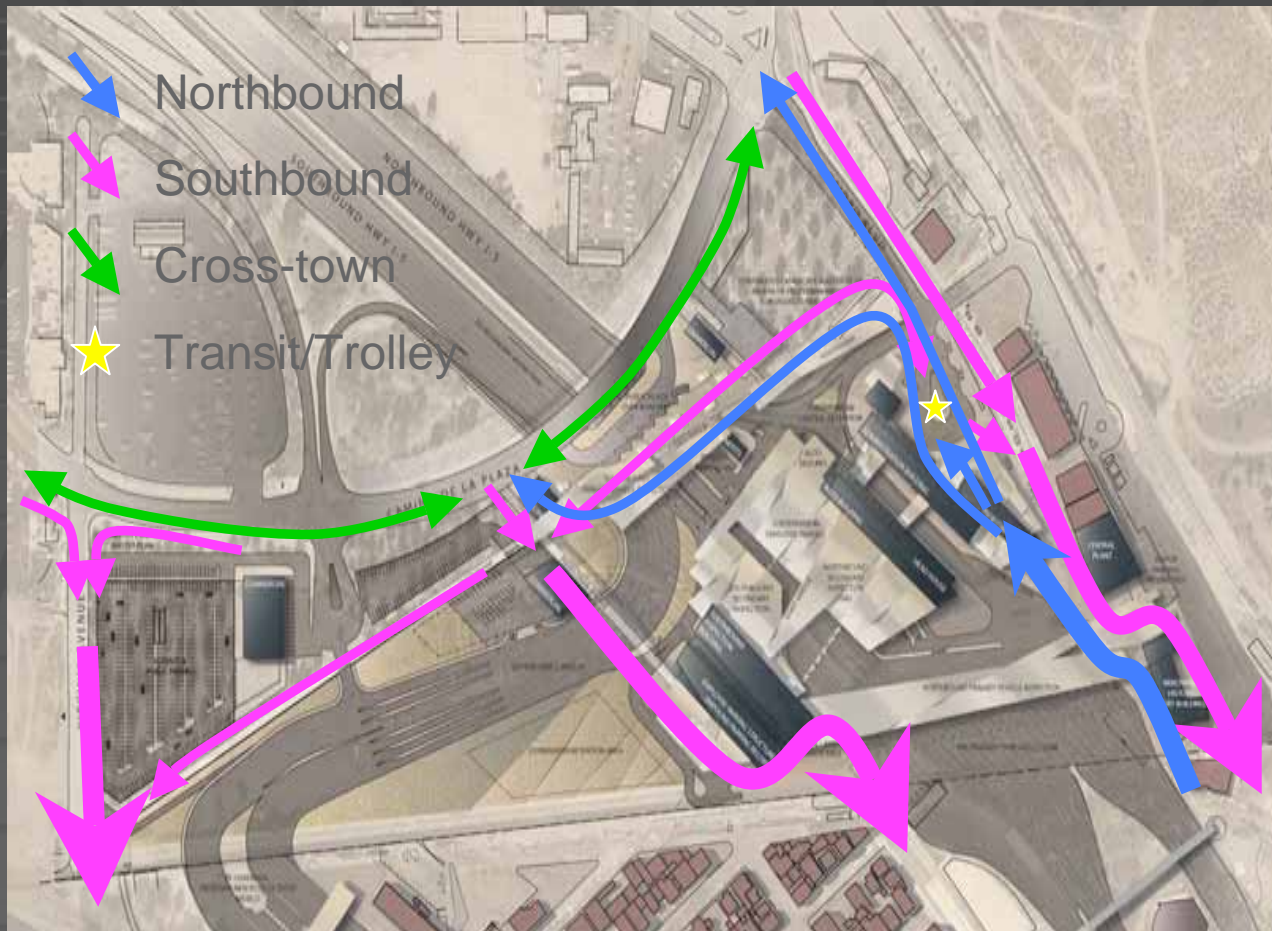


# *San Ysidro POE: Pedestrian Access Existing*





# *San Ysidro POE: Pedestrian Access Proposed*



# *Current Design*

## ❖ Due Diligence and Design

## ❖ Current Activities

- Virginia Avenue Demolition and Parking
- SDSC Stacked Booths and Feeder Lanes

## ❖ Funding

- \$199M received; \$59M needed for FY2009
- Submissions for 2011 and 2012

## ❖ Environmental

## ❖ Site Acquisition

## ❖ Stakeholder Outreach



# *Requests*

## ❖ CAD format drawings

- El Chaparral
- S/B Pedestrian Crossings
  - East Port
  - Virginia Avenue

## ❖ Future Technical Meeting to Coordinate Crossings

