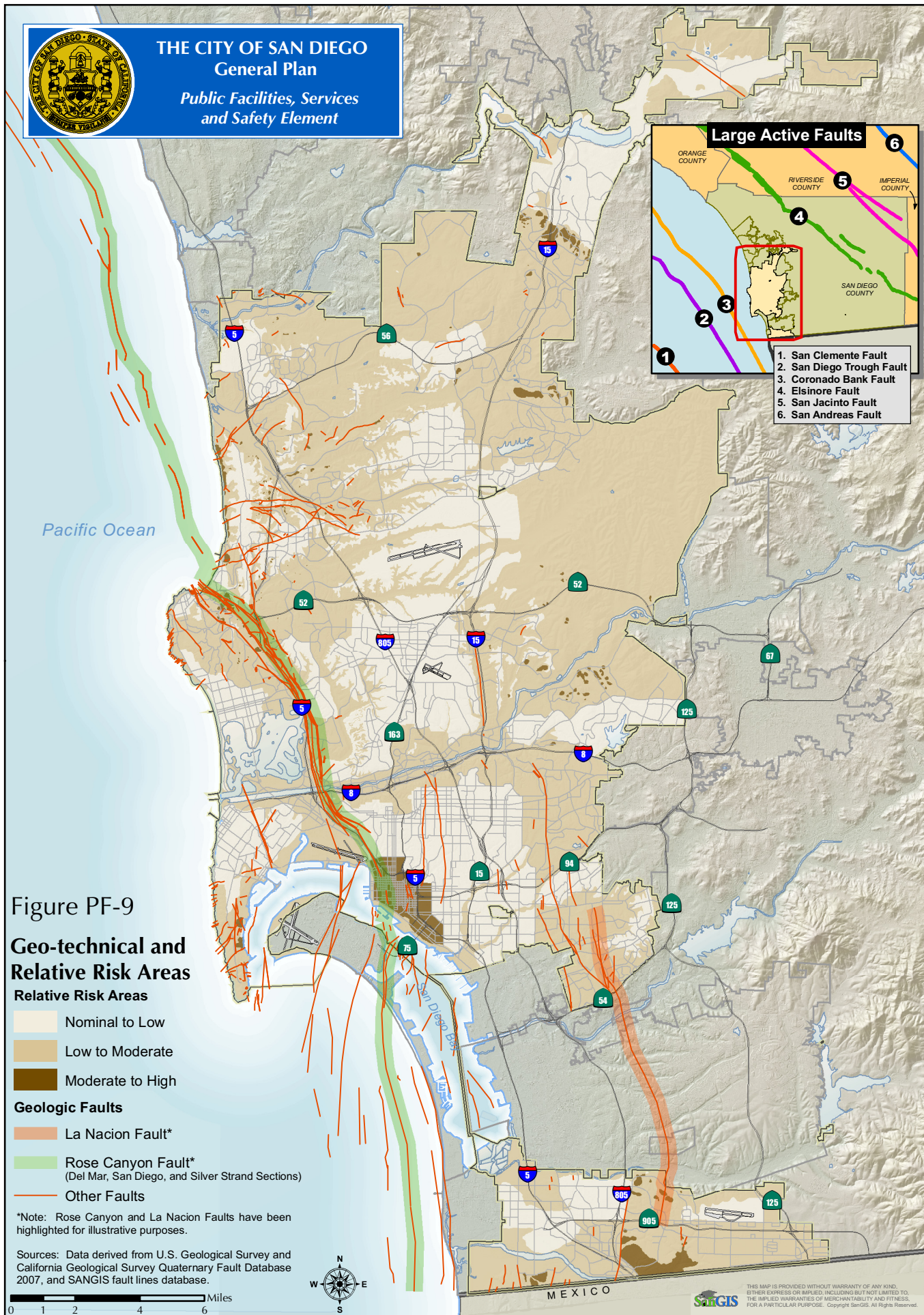




**THE CITY OF SAN DIEGO**  
**General Plan**  
*Public Facilities, Services  
 and Safety Element*



**Large Active Faults**

1. San Clemente Fault
2. San Diego Trough Fault
3. Coronado Bank Fault
4. Elsinore Fault
5. San Jacinto Fault
6. San Andreas Fault

**Figure PF-9**  
**Geo-technical and  
 Relative Risk Areas**

**Relative Risk Areas**

- Nominal to Low
- Low to Moderate
- Moderate to High

**Geologic Faults**

- La Nacion Fault\*
- Rose Canyon Fault\*  
 (Del Mar, San Diego, and Silver Strand Sections)
- Other Faults

\*Note: Rose Canyon and La Nacion Faults have been highlighted for illustrative purposes.

Sources: Data derived from U.S. Geological Survey and California Geological Survey Quaternary Fault Database 2007, and SANGIS fault lines database.

