



THE CITY OF SAN DIEGO General Plan

Program Environmental Impact Report

VALLEY
CENTER-
PAUMA
UNIFIED

ESCONDIDO UNION
HIGH SCHOOL DISTRICT

ESCONDIDO UNION ELEM

SAN PASQUAL UNION ELEM

SAN DIEGUITO UNION
HIGH SCHOOL DISTRICT

SOLANA
BEACH ELEM

POWAY UNIFIED

DEL MAR
UNION ELEM

Pacific Ocean

University of California
San Diego

Miramar
College

Alliant
International
University

SAN DIEGO UNIFIED

SANTEE ELEM

GROSSMONT UNION
HIGH SCHOOL DISTRICT

Figure 2.2-6
School Districts
with Schools

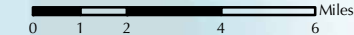
- Elementary
- K-12
- Junior/Middle/High
- Universities & Colleges

High School Districts

- Escondido Union School District
- Grossmont Union High School District
- San Dieguito Union High School District
- Sweetwater Union High School District

Unified School Districts

- Poway Unified
- San Diego Unified
- Valley Center-Pauma Unified



MEXICO



THIS MAP IS PROVIDED WITHOUT WARRANTY OF ANY KIND, EITHER EXPRESS OR IMPLIED, INCLUDING BUT NOT LIMITED TO, THE IMPLIED WARRANTIES OF MERCHANTABILITY AND FITNESS, FOR A PARTICULAR PURPOSE. Copyright SARGIS. All Rights Reserved.

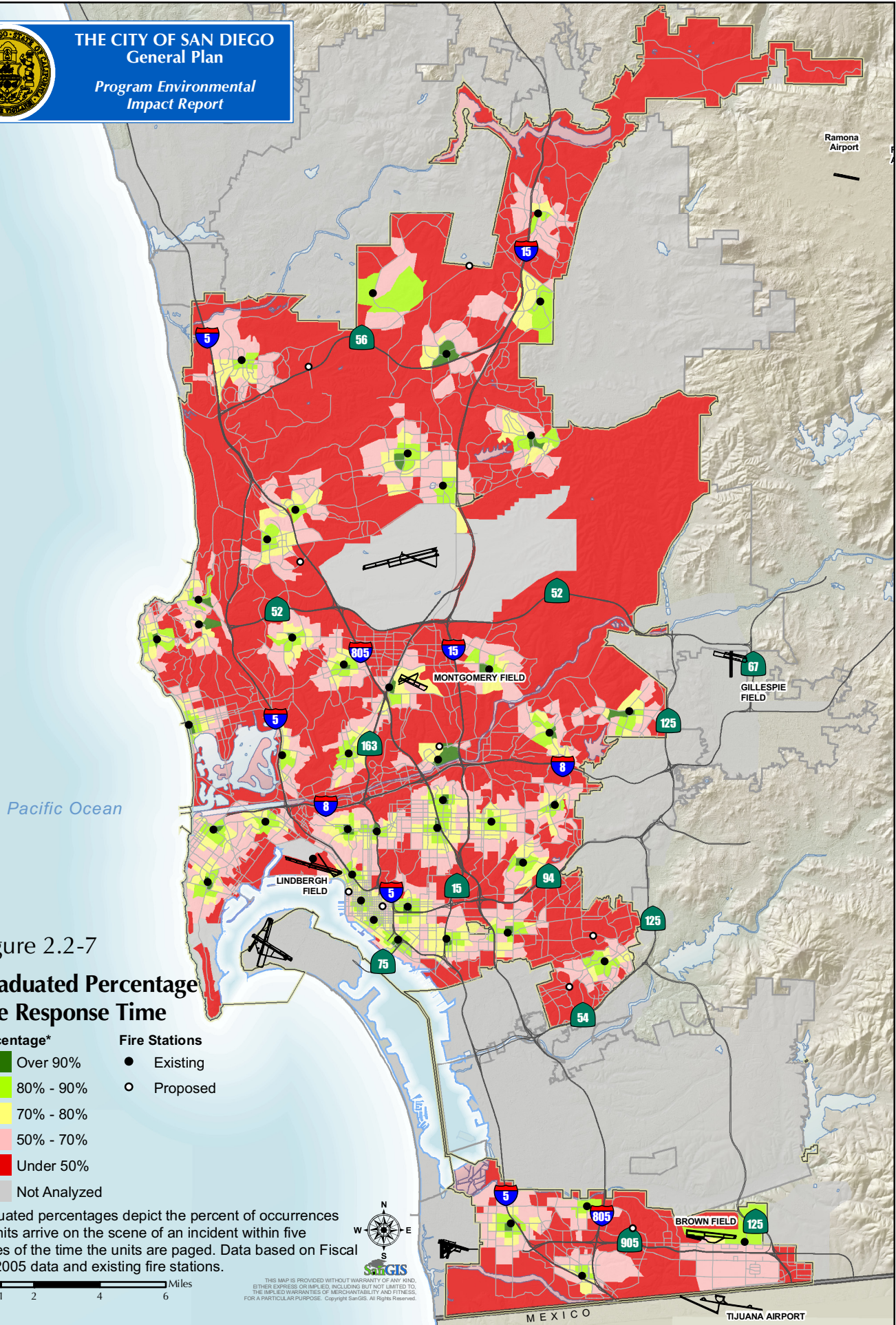


Figure 2.2-7

Graduated Percentage Fire Response Time

Percentage*		Fire Stations	
	Over 90%	●	Existing
	80% - 90%	○	Proposed
	70% - 80%		
	50% - 70%		
	Under 50%		
	Not Analyzed		

*Graduated percentages depict the percent of occurrences that units arrive on the scene of an incident within five minutes of the time the units are paged. Data based on Fiscal Year 2005 data and existing fire stations.

0 1 2 4 6 Miles

THIS MAP IS PROVIDED WITHOUT WARRANTY OF ANY KIND, EITHER EXPRESS OR IMPLIED, INCLUDING BUT NOT LIMITED TO, THE IMPLIED WARRANTIES OF MERCHANTABILITY AND FITNESS, FOR A PARTICULAR PURPOSE. Copyright SanGIS. All Rights Reserved.



THE CITY OF SAN DIEGO
General Plan

Program Environmental
Impact Report

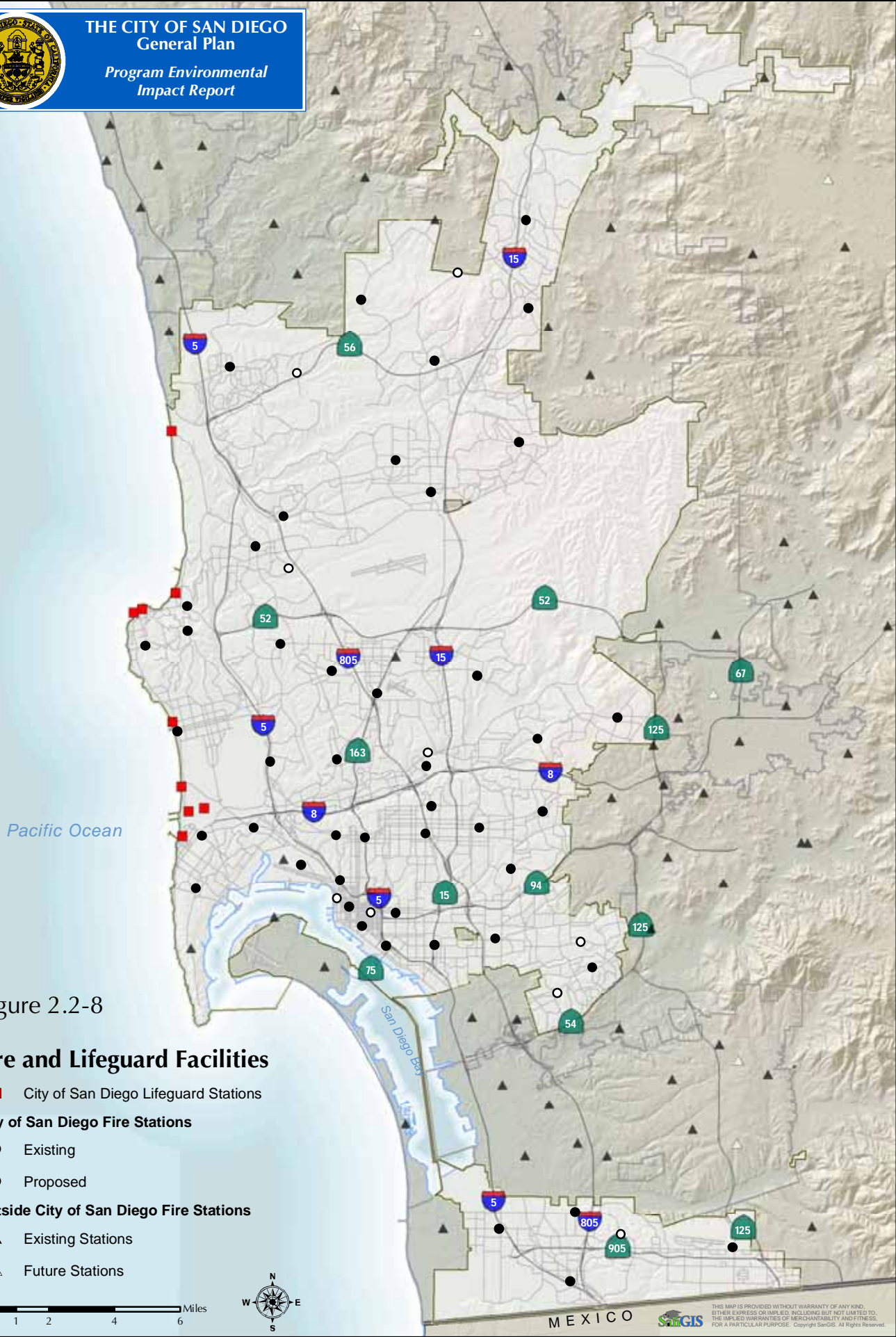
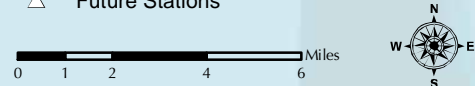


Figure 2.2-8

Fire and Lifeguard Facilities

- City of San Diego Lifeguard Stations
- City of San Diego Fire Stations**
 - Existing
 - Proposed
- Outside City of San Diego Fire Stations**
 - ▲ Existing Stations
 - △ Future Stations



MEXICO

THIS MAP IS PROVIDED WITHOUT WARRANTY OF ANY KIND, OTHER EXPRESS OR IMPLIED, INCLUDING BUT NOT LIMITED TO, THE IMPLIED WARRANTIES OF MERCHANTABILITY AND FITNESS, FOR A PARTICULAR PURPOSE. Copyright SARGIS. All Rights Reserved.

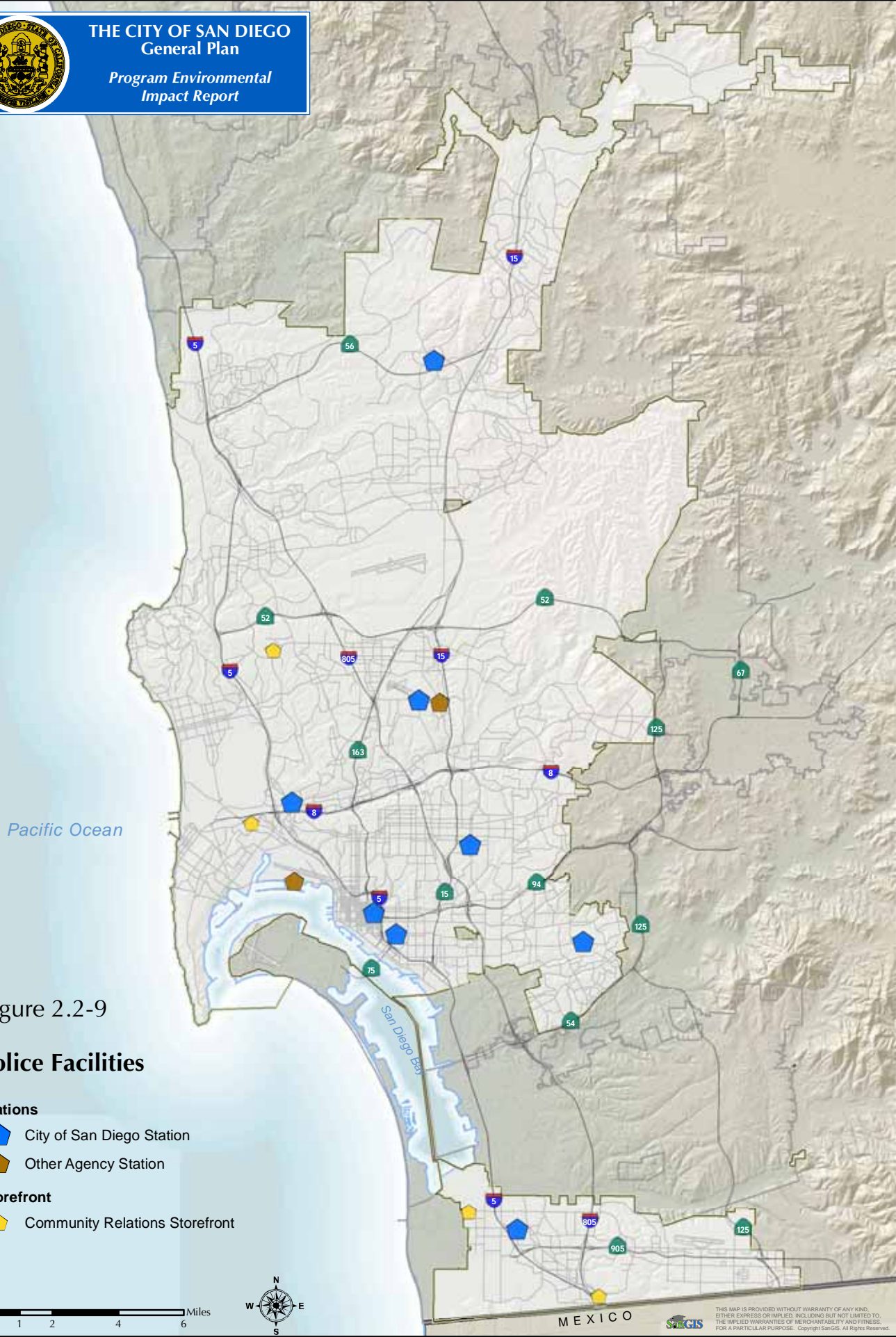





Figure 2.2-9

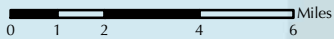
Police Facilities

Stations

-  City of San Diego Station
-  Other Agency Station

Storefront

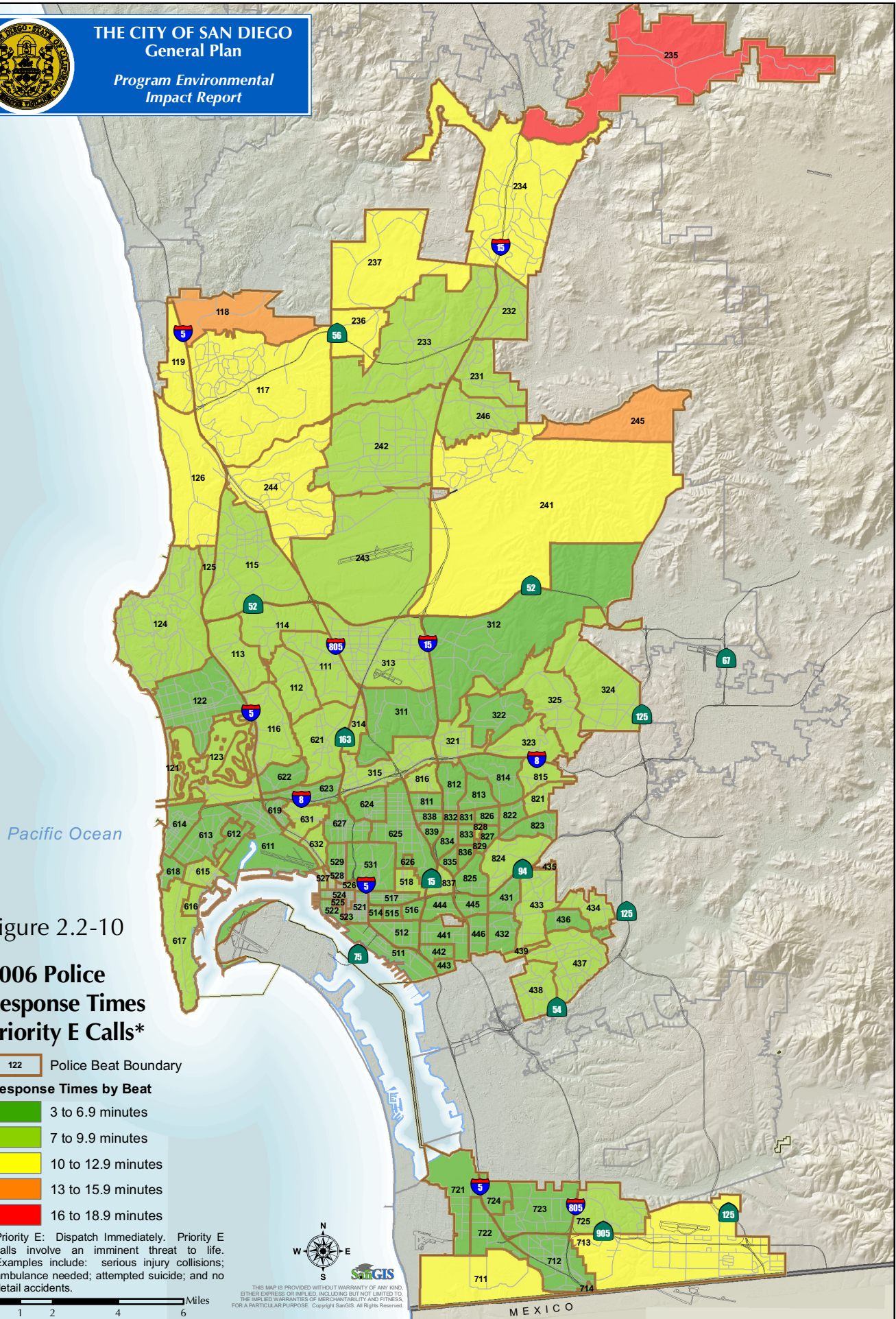
-  Community Relations Storefront



MEXICO



THIS MAP IS PROVIDED WITHOUT WARRANTY OF ANY KIND, EITHER EXPRESS OR IMPLIED, INCLUDING BUT NOT LIMITED TO, THE IMPLIED WARRANTIES OF MERCHANTABILITY AND FITNESS FOR A PARTICULAR PURPOSE. Copyright SanGIS. All Rights Reserved.



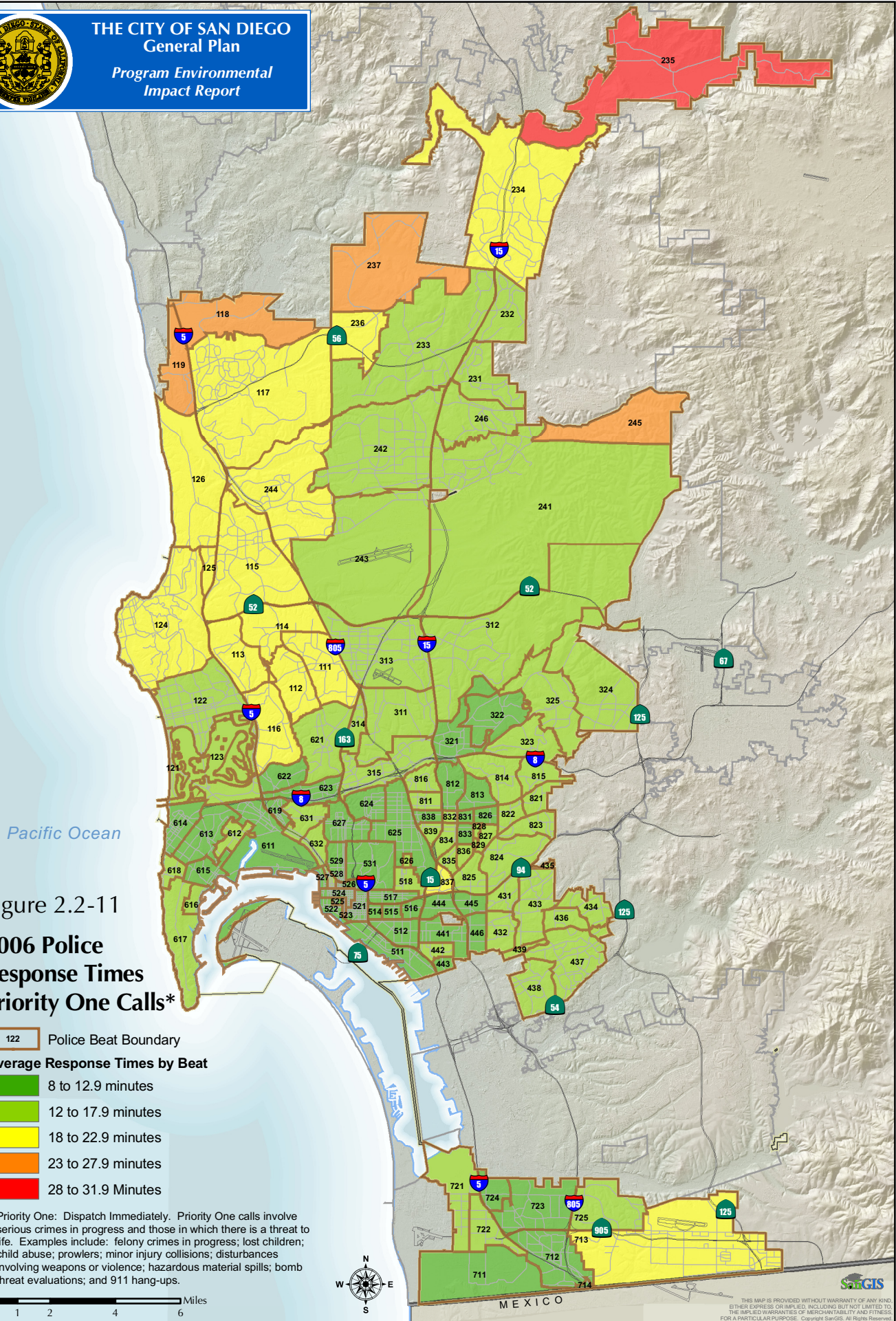


Figure 2.2-11

**2006 Police
Response Times
Priority One Calls***

- 122 Police Beat Boundary
- Average Response Times by Beat**
- 8 to 12.9 minutes
- 12 to 17.9 minutes
- 18 to 22.9 minutes
- 23 to 27.9 minutes
- 28 to 31.9 Minutes

Priority One: Dispatch Immediately. Priority One calls involve serious crimes in progress and those in which there is a threat to life. Examples include: felony crimes in progress; lost children; child abuse; prowlers; minor injury collisions; disturbances involving weapons or violence; hazardous material spills; bomb threat evaluations; and 911 hang-ups.



0 1 2 4 6 Miles

THIS MAP IS PROVIDED WITHOUT WARRANTY OF ANY KIND, EITHER EXPRESS OR IMPLIED, INCLUDING BUT NOT LIMITED TO, THE IMPLIED WARRANTIES OF MERCHANTABILITY AND FITNESS FOR A PARTICULAR PURPOSE. Copyright SanGIS. All Rights Reserved.