

Historical Resources Board

July 31, 2014



1420 GRANADA AVENUE

ITEM 5



ITEM 5

1420 GRANADA AVENUE



ITEM 5

1420 GRANADA AVENUE



2013



2014



ITEM 5

1420 GRANADA STREET

STAFF RECOMMENDATION:

Do not designate the property located at 1420 Granada Avenue under any adopted HRB Criteria.



GEORGE HESTON HOUSE
1911 28TH STREET

ITEM 6



GEORGE HESTON HOUSE

1911 28TH STREET

ITEM 6



GEORGE HESTON HOUSE

1911 28TH STREET

ITEM 6

STAFF RECOMMENDATION:

Designate the George Heston House located at 1911 28th Street as a historical resource with a period of significance of 1925 under HRB Criterion C. The designation excludes the detached former garage that was converted to a guest house.



**EDWARD AND EMMA BARRETT/
CHARLES TIFAL HOUSE
4156 MIDDLESEX DRIVE**

ITEM 7



**EDWARD AND EMMA BARRETT/
CHARLES TIFAL HOUSE
4156 MIDDLESEX DRIVE**

ITEM 7



**EDWARD AND EMMA BARRETT/
CHARLES TIFAL HOUSE
4156 MIDDLESEX DRIVE**

ITEM 7



**EDWARD AND EMMA BARRETT/
CHARLES TIFAL HOUSE
4156 MIDDLESEX DRIVE**

ITEM 7



EDWARD AND EMMA BARRETT/ CHARLES TIFAL HOUSE

4156 MIDDLESEX DRIVE

ITEM 7

STAFF RECOMMENDATION:

Designate the Edward and Emma Barrett/Charles Tifal House located at 4156 Middlesex Drive as a historical resource with a period of significance of 1930 under HRB Criteria C and D.

Interior elements included in the designation are the exposed beam ceilings of the living room and front bedroom.

The designation excludes the rear patio enclosure addition and the heavily modified detached two-car garage.



GRAY GABLES INN
3530 PROMONTORY STREET

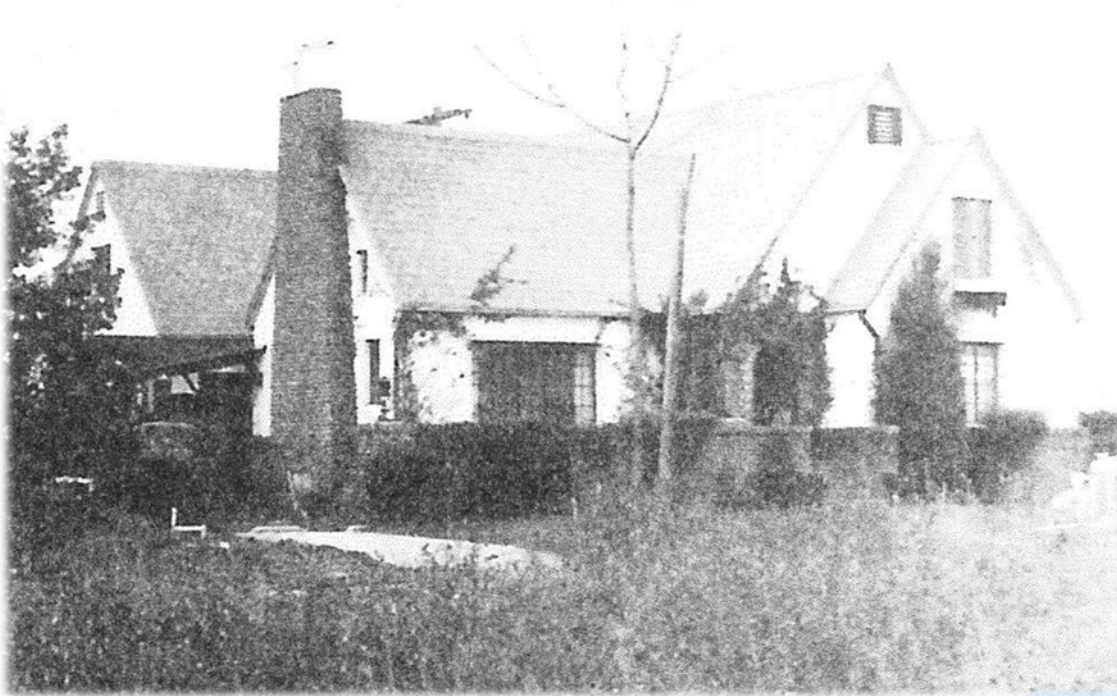
ITEM 8



GRAY GABLES INN

3530 PROMONTORY STREET

ITEM 8



Circa 1937



2014



GRAY GABLES INN

3530 PROMONTORY STREET

ITEM 8



GRAY GABLES INN

3530 PROMONTORY STREET

ITEM 8



GRAY GABLES INN

3530 PROMONTORY STREET

ITEM 8

STAFF RECOMMENDATION:

Designate the Gray Gables Inn located at 3530 Promontory Street as a historical resource with a period of significance of 1929-1935 under HRB Criteria A and C. Interior elements included in the designation are the living room fireplace with arched niche and Batchelder or Batchelder style ceramic tile hearth; and the interior wood and brick detailing associated with the restaurant or tea room addition.



JOSEPHINE SEAMAN RENTAL COTTAGE

1327 COAST WALK

ITEM 9



JOSEPHINE SEAMAN RENTAL COTTAGE

1327 COAST WALK

ITEM 9



JOSEPHINE SEAMAN RENTAL COTTAGE

1327 COAST WALK

ITEM 9

STAFF RECOMMENDATION:

Designate the Josephine Seaman Rental Cottage located at 1327 Coast Walk as a historical resource with a period of significance of c.1921 under HRB Criteria A and C.



**C. WESLEY AND LUCIE HALL
HOUSE
4175 ARDEN WAY**

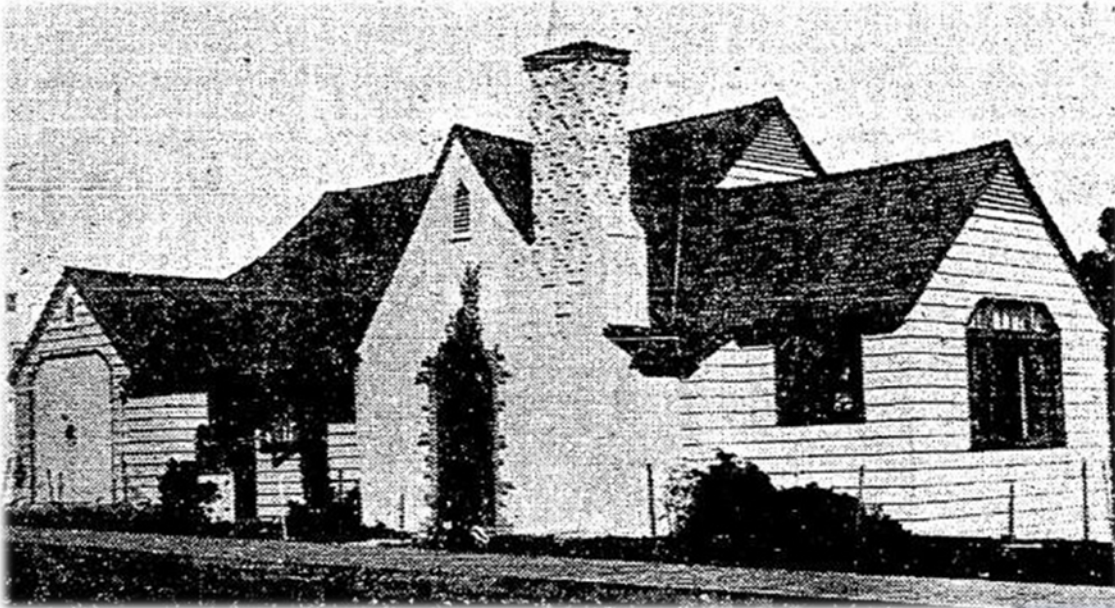
ITEM 10



C. WESLEY AND LUCIE HALL HOUSE

4175 ARDEN WAY

ITEM 10



1926



2014



**C. WESLEY AND LUCIE HALL
HOUSE
4175 ARDEN WAY**

ITEM 10



C. WESLEY AND LUCIE HALL HOUSE

4175 ARDEN WAY

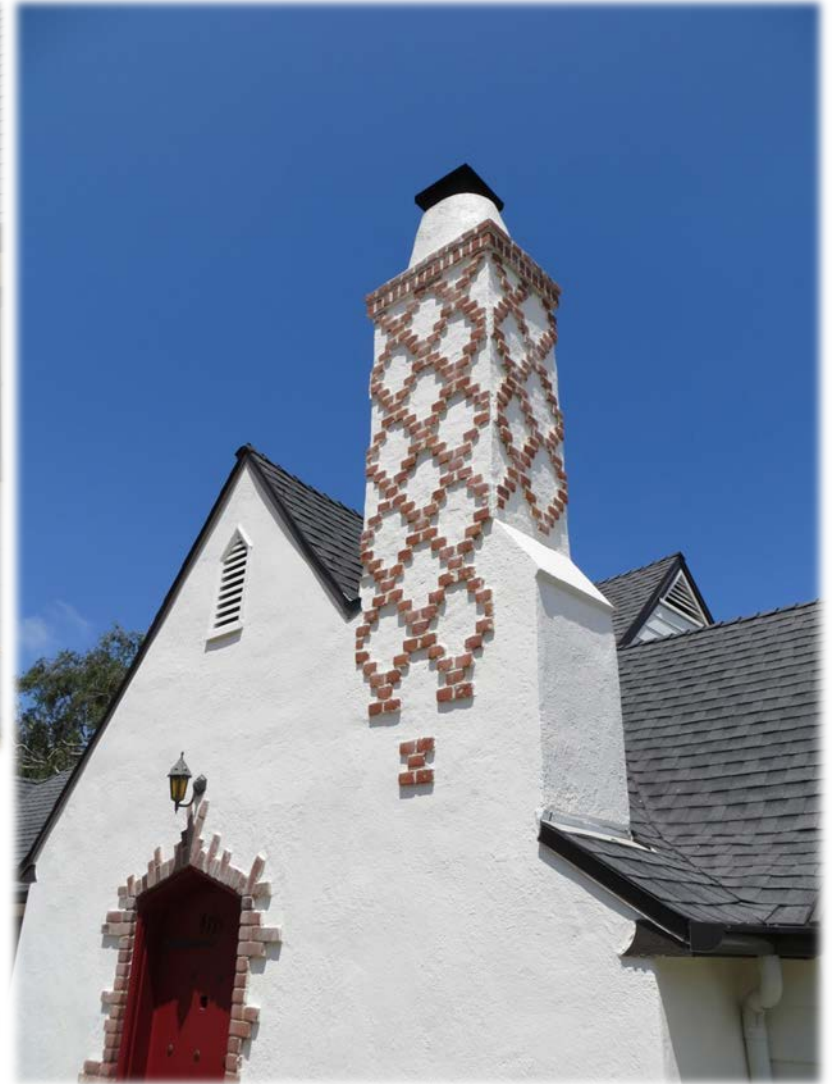
ITEM 10



C. WESLEY AND LUCIE HALL HOUSE

4175 ARDEN WAY

ITEM 10



C. WESLEY AND LUCIE HALL HOUSE

4175 ARDEN WAY

ITEM 10

STAFF RECOMMENDATION:

Designate the C. Wesley and Lucie Hall House located at 4175 Arden Way as a historical resource with a period of significance of 1924 under HRB Criterion C.

The designation excludes the addition with the balcony at the southeastern corner of the house.



Historical Resources Board

July 31, 2014

