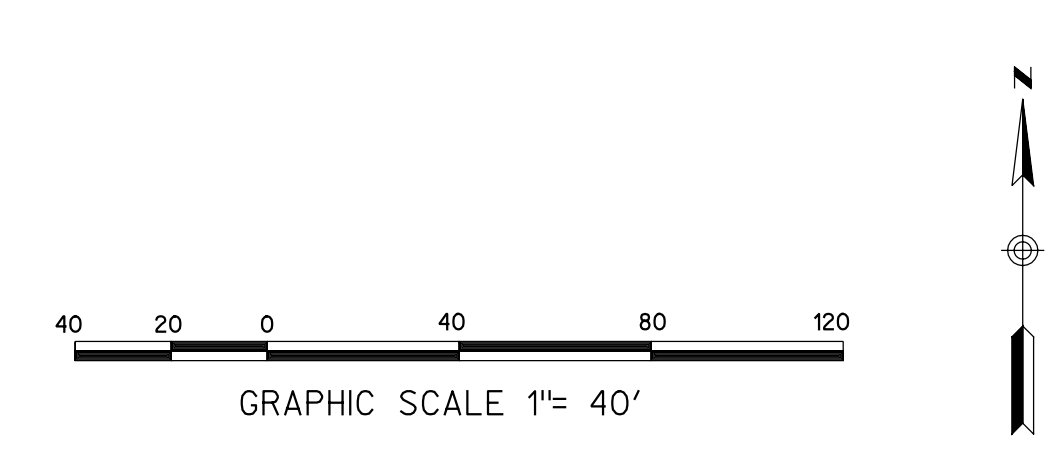
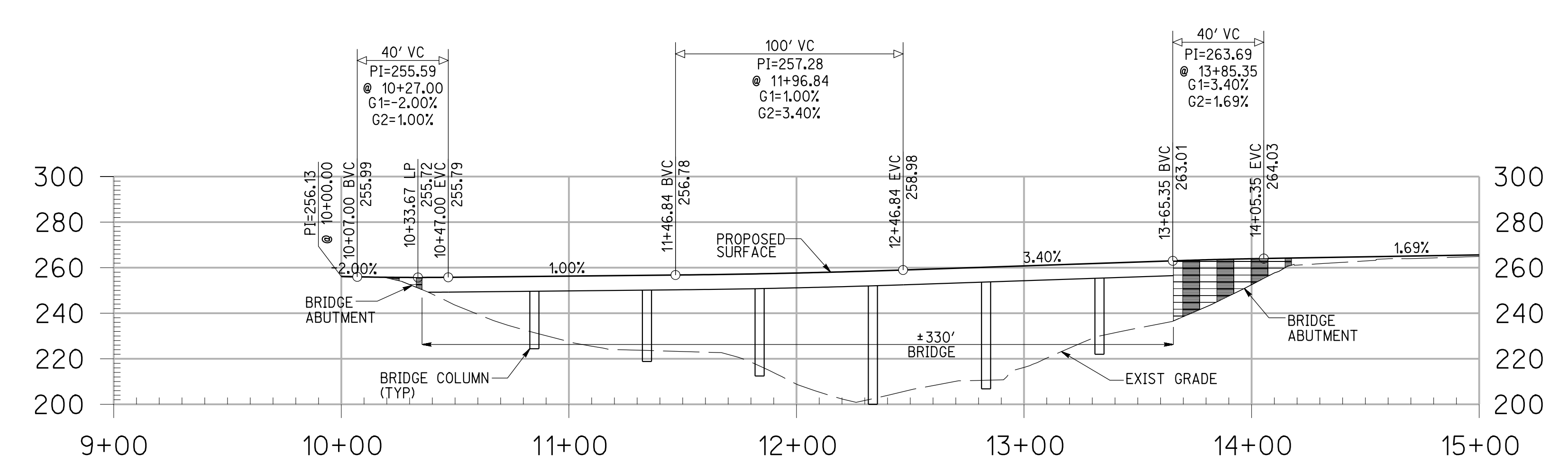
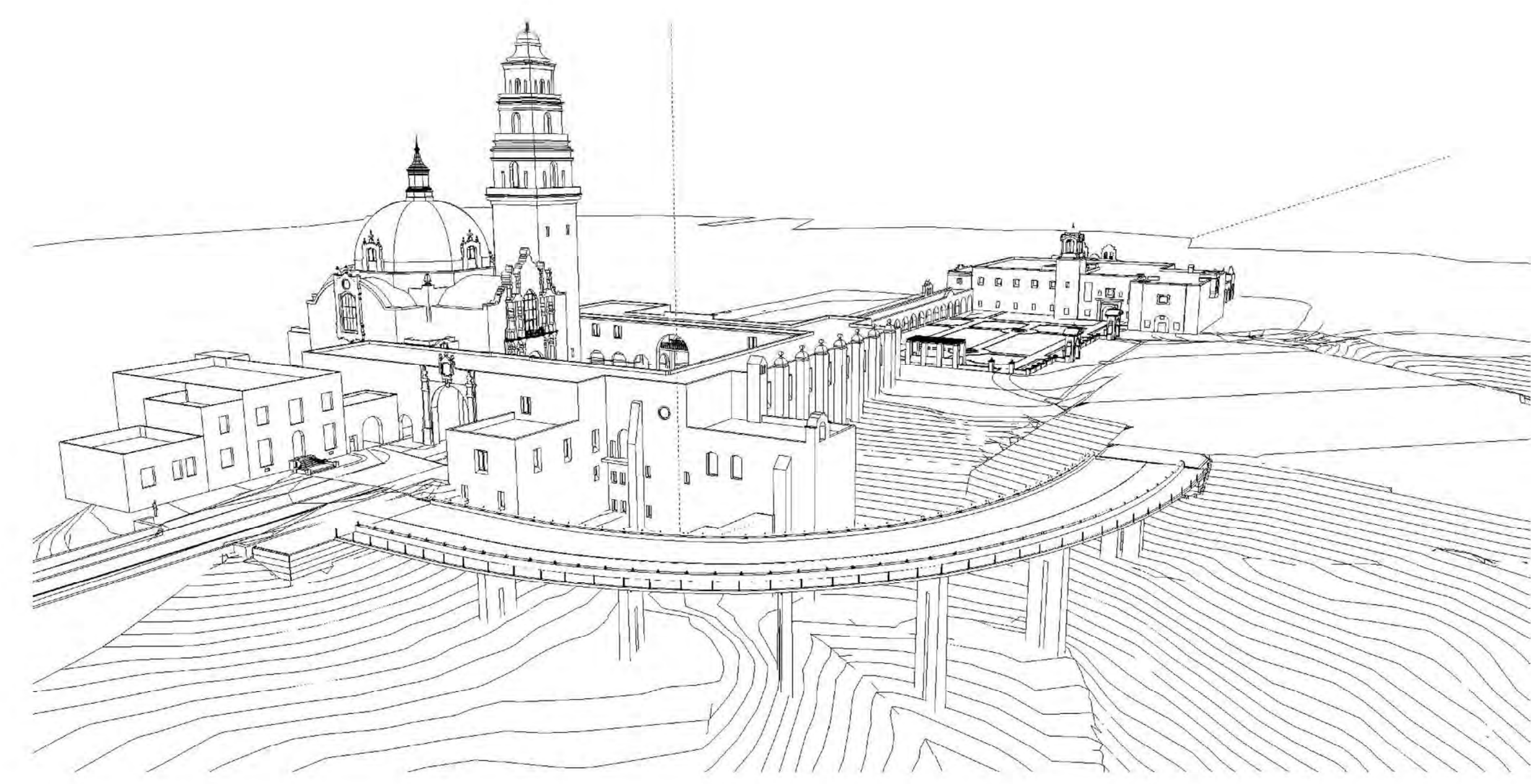
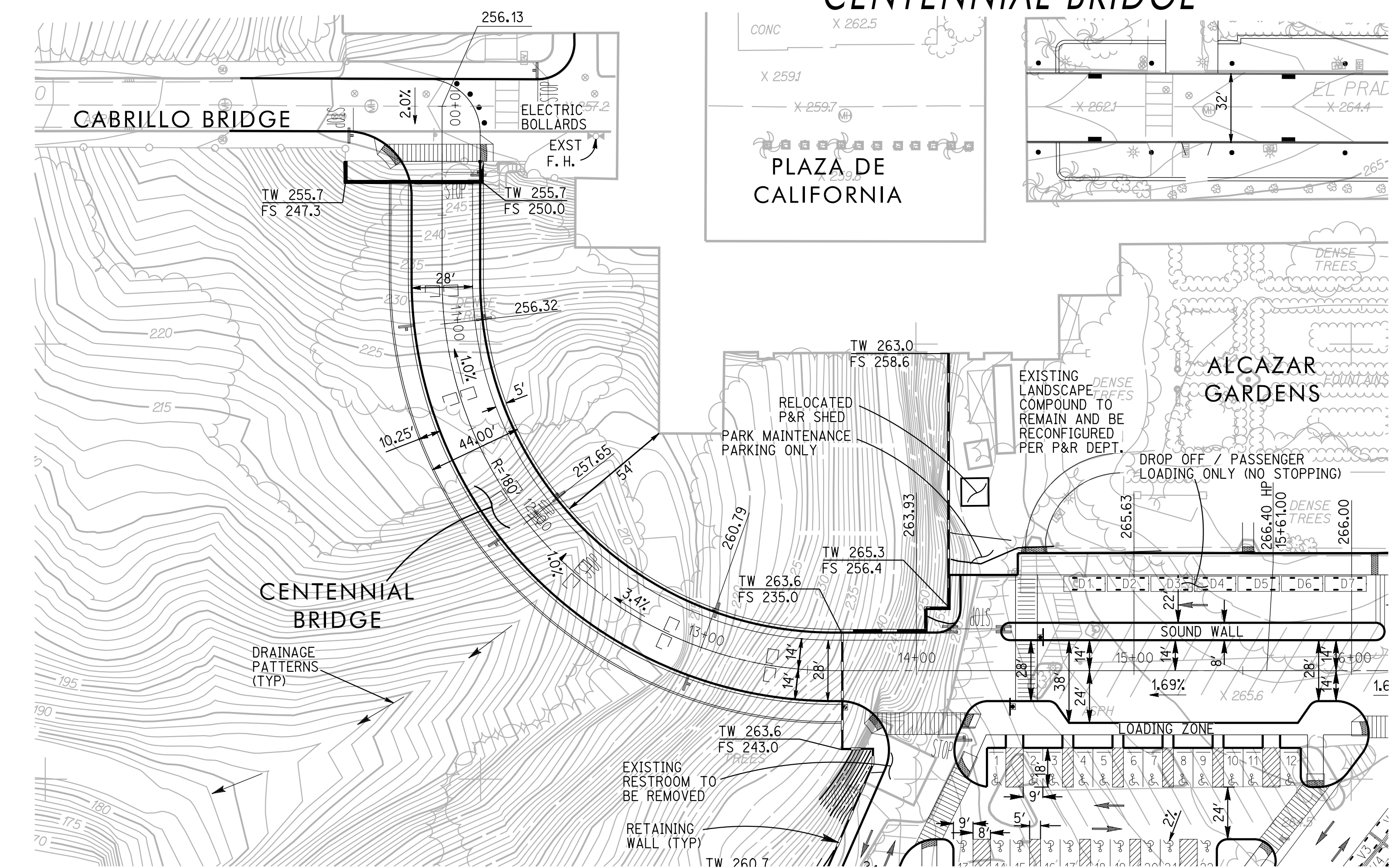
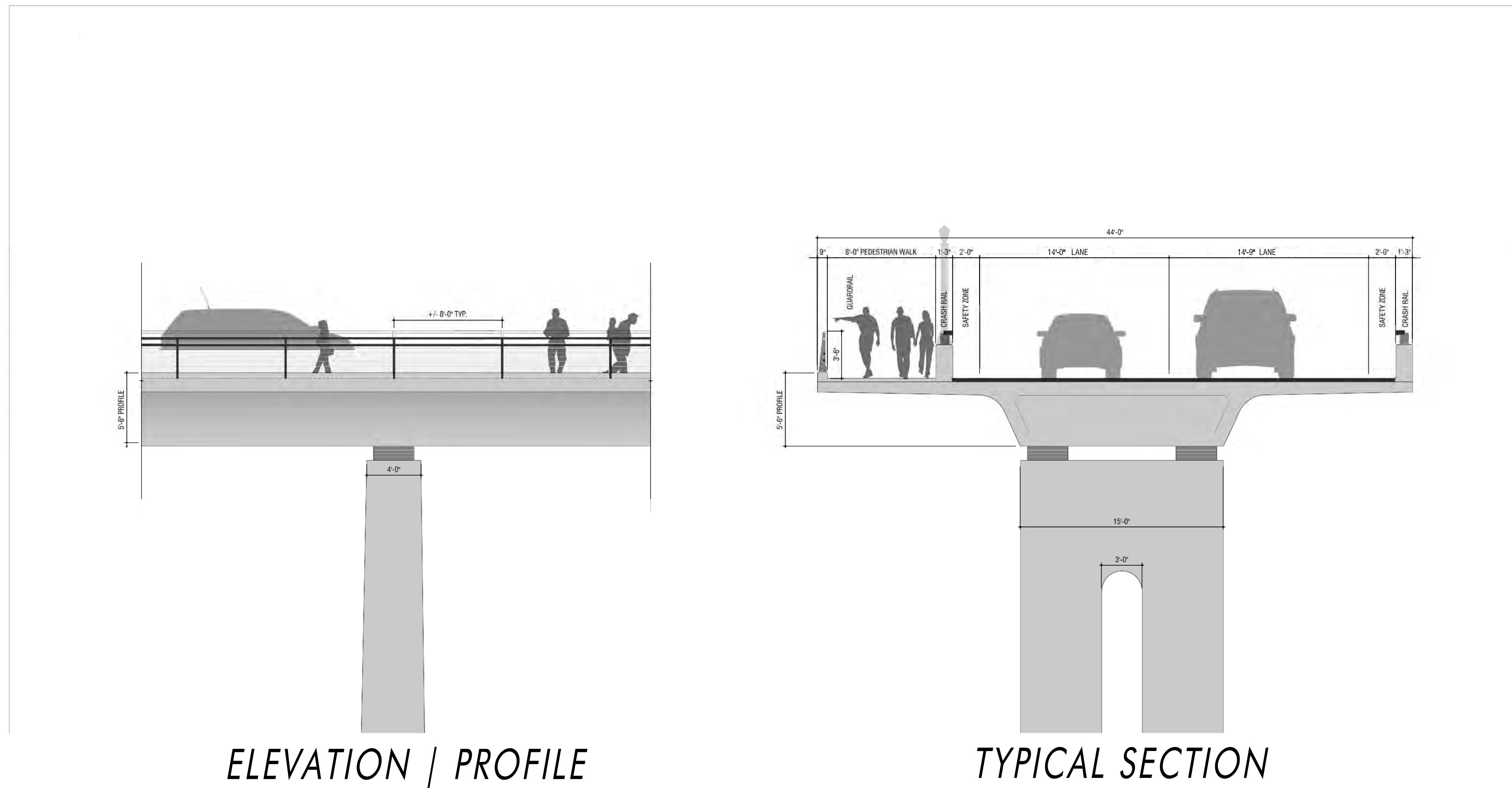


BALBOA PARK PLAZA DE PANAMA CIRCULATION AND PARKING STRUCTURE PROJECT CENTENNIAL BRIDGE

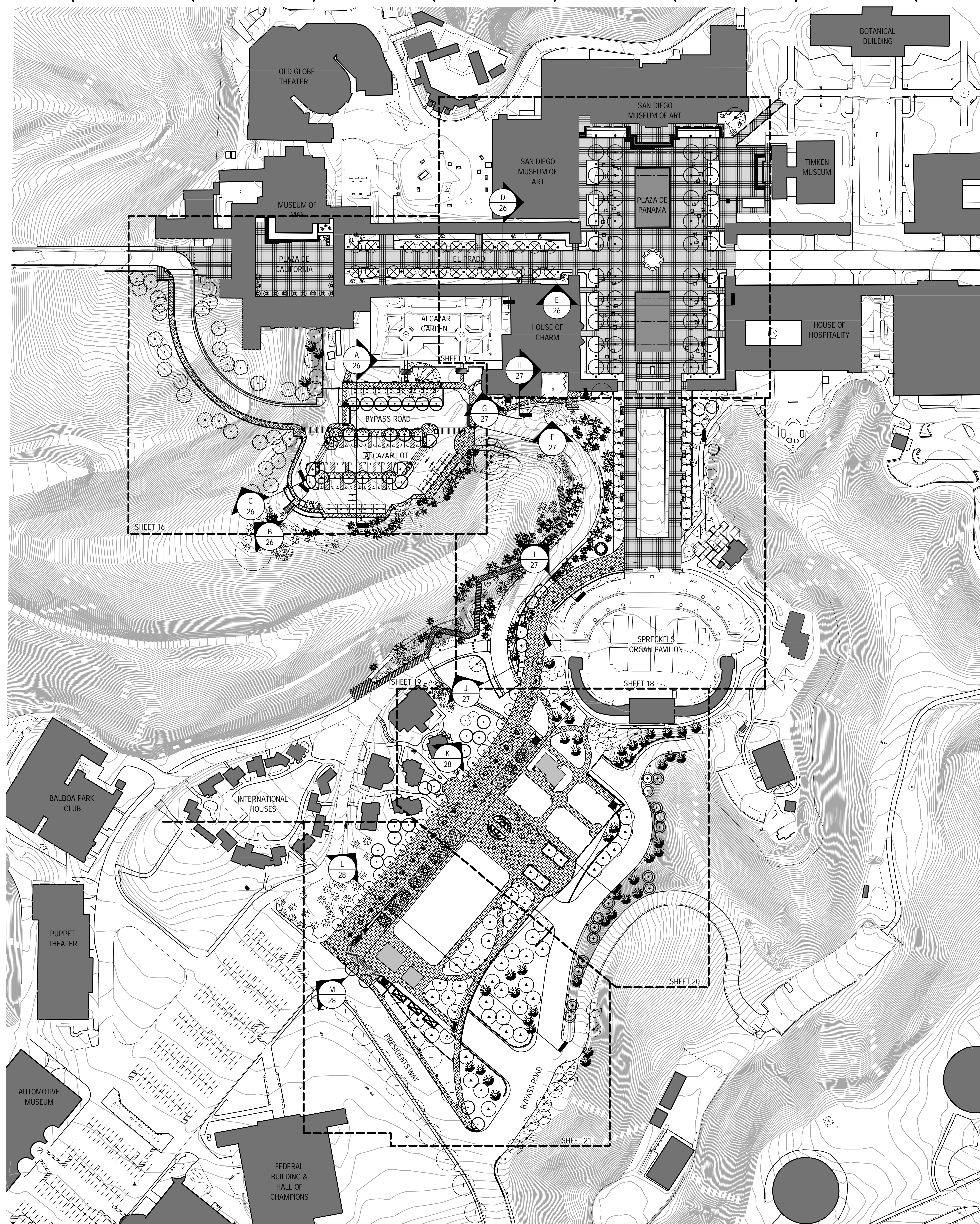


Prepared By: Rick Engineering Company	Revision 14: _____
Name: 5620 Friars Road	Revision 13: _____
Address: San Diego, California 92110	Revision 12: _____
Phone #: (619) 291-0707	Revision 11: _____
Project Address: PLAZA DE PANAMA BALBOA PARK, SAN DIEGO	Revision 10: _____
Project Name: BALBOA PARK PLAZA DE PANAMA CIRCULATION AND PARKING STRUCTURE PROJECT	Revision 9: _____
Sheet Title: CENTENNIAL BRIDGE PLAN, PROFILE & PERSPECTIVE VIEWS	Revision 8: _____
	Revision 7: _____
	Revision 6: 4/4/12
	Revision 5: 3/7/12
	Revision 4: 11/22/11
	Revision 3: 10/14/11
	Revision 2: 5/3/11
	Original Date: 3/15/11
	Sheet 5 of 43
	DEP # 233958

BALBOA PARK PLAZA

Plaza de Panama Circulation and Parking Structure Project

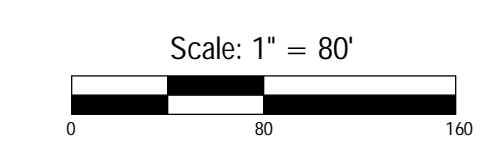
Overall Site Plan



GENERAL IRRIGATION NOTES:

1. ALL REQUIRED IRRIGATION SYSTEMS SHALL BE AUTOMATIC, ELECTRICALLY CONTROLLED AND DESIGNED TO PROVIDE WATER TO ALL REQUIRED PLANTINGS TO MAINTAIN THEM IN A HEALTHY, DISEASE-RESISTANT CONDITION.
2. IRRIGATION SYSTEMS SHALL MEET THE FOLLOWING DESIGN REQUIREMENTS:
 - A. INCLUDE AND INSTALL A CITY-APPROVED ELECTRONICALLY CONTROLLED AUTOMATIC RAIN SHUT-OFF DEVICE.
 - B. INCLUDE AND INSTALL LOW PRECIPITATION RATE SPRINKLER NOZZLES. HEADS SHALL BE PLACED TO MINIMIZE OVER SPRAY AND TO REDUCE RUN-OFF OF WATER FROM OVER-WATERING.
 - C. INCLUDE AND INSTALL AN AUTOMATIC ELECTRIC CONTROLLER THAT SHALL BE SEASONALLY ADJUSTED TO OPERATE THE IRRIGATION SYSTEM WITH THE LEAST PRACTICAL AMOUNT OF WATER APPLIED.
3. ALL LANDSCAPE AND IRRIGATION SHALL CONFORM TO THE STANDARDS OF THE LAND DEVELOPMENT CODE LANDSCAPE REGULATIONS AND THE CITY OF SAN DIEGO LAND DEVELOPMENT MANUAL LANDSCAPE STANDARDS AND ALL OTHER LANDSCAPE RELATED CITY AND REGIONAL STANDARDS.
4. REQUIRED PER CITY, ROOT BARRIERS: ROOT BARRIERS ARE REQUIRED FOR ALL STREET TREES WITHIN 6' OF ANY HARDSCAPE, CURBS, OR WALLS. THEY SHALL BE 24" DEEP, 0.8" THICK, AND BE PLACED FLUSH WITH THE TOP OF ANY ADJACENT HARDSCAPE OR CURB AND BE CENTERED 6' ON EITHER SIDE OF THE TREE.
5. AN AUTOMATED, WATER-EFFICIENT IRRIGATION SYSTEM SHALL BE PROVIDED TO ESTABLISH AND MAINTAIN LANDSCAPING. MINIMUM TREE/IMPROVEMENT SEPARATION DISTANCE: TRAFFIC SIGNAL/STOP SIGN - 20 FT, SEWER LINES - 10 FT, UNDERGROUND UTILITY LINES - 5 FT, ABOVE GROUND UTILITY STRUCTURES - 10 FT, DRIVEWAYS - 10 FT, INTERSECTIONS - 25 FT.
6. IRRIGATION FOR TURF AREAS SHALL ACHIEVE A DISTRIBUTION UNIFORMITY OF 70%. THE IRRIGATION SYSTEM SHALL BE AUDITED BY AN INDEPENDENT CERTIFIED LANDSCAPE IRRIGATION AUDITOR, CERTIFIED BY THE IRRIGATION ASSOCIATION. DEFICIENCIES SHALL BE CORRECTED PRIOR TO THE START OF THE PLANT ESTABLISHMENT PERIOD.

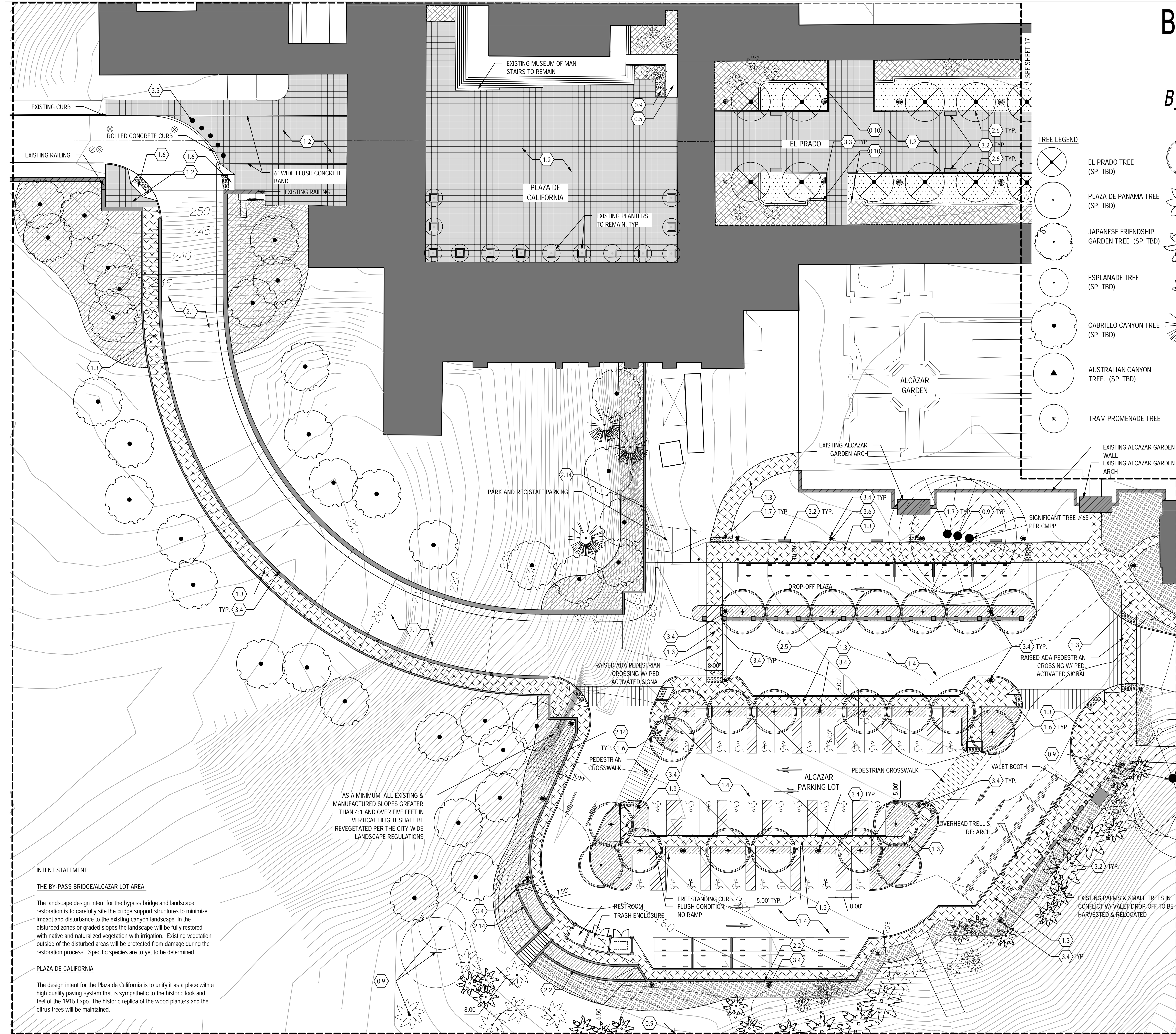
Prepared By:	Civitas, Inc.	Revision 14:	_____
Name:	1200 Bannock St	Revision 13:	_____
Address:	Denver, CO 80204	Revision 12:	_____
Phone #:	(303) 571-0053	Revision 11:	_____
Project Address:	_____	Revision 10:	_____
	_____	Revision 9:	_____
	_____	Revision 8:	_____
	_____	Revision 7:	_____
	_____	Revision 6:	4/6/12
	_____	Revision 5:	3/7/12
Project Name:	BALBOA PARK PLAZA	Revision 4:	1/12/11
	Plaza de Panama Circulation	Revision 3:	10/14/11
	and Parking Structure Project	Revision 2:	5/03/11
Sheet Title:	Overall Site Plan	Revision 1:	_____
	_____	Original Date:	3/11/11
	_____	Sheet	14 of 43
	_____	DEP #	233958



BALBOA PARK PLAZA

Plaza de Panama Circulation and Parking Structure Project

Bypass Bridge, Alcazar Lot & West Prado



KEYNOTES

Symbol	Description
0.0	EXISTING CONDITIONS
0.1	EXISTING UTILITY
0.2	EXISTING MANHOLE
0.3	EXISTING UTILITY POLE
0.4	EXISTING LIGHT POLE
0.5	EXISTING CONCRETE PAVING
0.6	EXISTING ASPHALT PAVING
0.7	EXISTING LAWN
0.8	EXISTING SHRUB(S)
0.9	EXISTING TREE(S)
0.10	EXISTING CONCRETE MOW BAND
1.0	PAVING
1.1	CENTENNIAL ROAD
1.2	HISTORIC CORE PAVING
1.3	PEDESTRIAN PAVING (COMPLIMENTARY TO THE HISTORIC CORE PAVING MATERIAL)
1.4	ASPHALT
1.5	STABILIZED DECOMPOSED GRANITE PAVING
1.6	ACCESSIBLE RAMP
1.7	TRUNCATED DOMES
2.0	STRUCTURES
2.1	VEHICULAR BYPASS BRIDGE
2.2	MORTAR SET STACKED STONE RETAINING WALL
2.3	PALM CANYON BOARDWALK EXTENSION
2.4	HOUSE OF CHARM PEDESTRIAN BRIDGE/WALKWAY
2.5	ALCAZAR PARKING LOT WALL/COLUMNS
2.6	4" CONC. CURB
2.7	TREE GRATE/OPENING
2.8	OPEN AIR PAVILIONS
2.9	PROGRAMMED PAVILIONS
2.10	TREE OPENINGS IN GARAGE STRUCTURE
2.11	STAIR/ELEVATOR CORE
2.12	STAIRWELL
2.13	TERRACED STAIRS
2.14	LIGHT SAND FINISH CONCRETE RETAINING WALL
2.15	PROMENADE/TRAMWAY SEAT WALL
2.16	ART MUSEUM PLAZA STAIRS
2.17	REFLECTING POOLS
2.18	CONCRETE MOW BAND
3.0	SITE FURNISHINGS & SIGNAGE
3.1	MOVABLE TABLES AND CHAIRS
3.2	PARK BENCH
3.3	HISTORIC LIGHT FIXTURE REPRODUCTION W/ CONCRETE COLLAR
3.4	CMPP APPROVED LIGHT FIXTURE W/ CONCRETE COLLAR
3.5	ELECTRIC BOLLARD
3.6	REMOVABLE BOLLARD
3.7	HISTORIC LANDSCAPE GUARDRAIL
3.8	ROOFTOP PARK GUARDRAIL
3.9	PLAZA HANDRAIL
3.10	TABLES & CHAIRS (FIXED)

TREE LEGEND

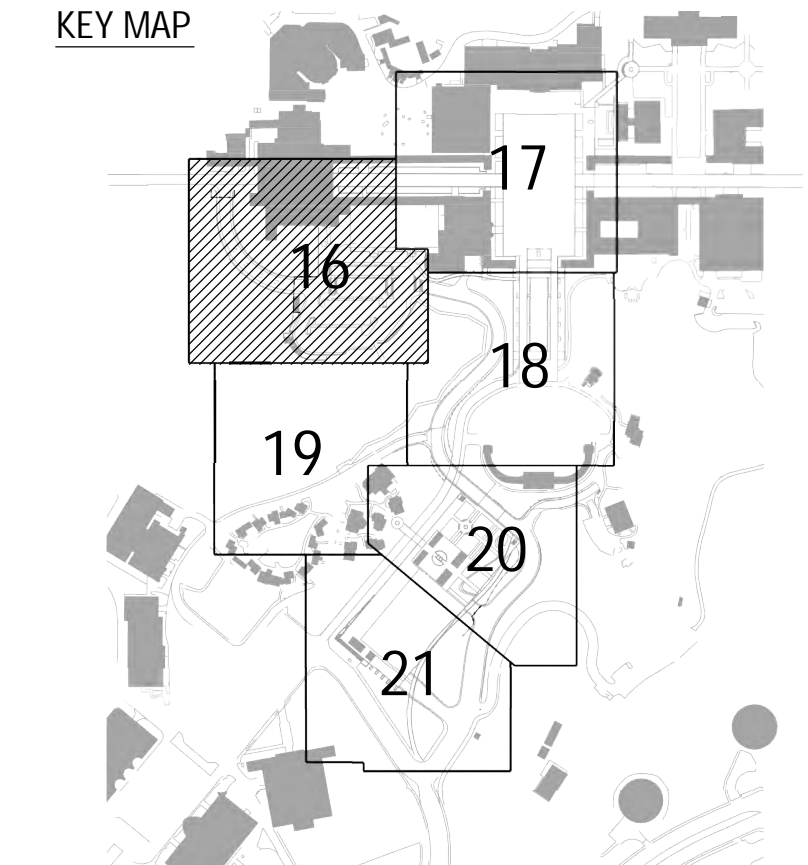
Symbol	Tree Name
+	EL PRADO TREE (SP. TBD)
Star	PLAZA DE PANAMA TREE (SP. TBD)
Circle with dot	JAPANESE FRIENDSHIP GARDEN TREE (SP. TBD)
Circle with cross	ESPLANADE TREE (SP. TBD)
Circle with star	CABRILLO CANYON TREE (SP. TBD)
Circle with triangle	AUSTRALIAN CANYON TREE (SP. TBD)
x	TRAM PROMENADE TREE

PLANTING LEGEND

Symbol	Description
Circle with cross	AUSTRALIAN CANYON LANDSCAPE
Circle with dot	PALM CANYON UNDERSTORY RESTORATION
Circle with star	HISTORIC CORE FOUNDATION PLANTING
Circle with cross	CABRILLO CANYON LANDSCAPE
Circle with star	JAPANESE FRIENDSHIP GARDEN LANDSCAPE
Circle with cross	EXISTING SHRUBS, SUPPLEMENT AS NEEDED
Circle with dot	SOD
Circle with cross	WATER QUALITY ORNAMENTAL TREATMENT
Circle with star	CALIFORNIA GARDENS
Circle with cross	SHRUB PLANTING
Circle with dot	ANNUALS
Circle with cross	VINES

MATERIAL LEGEND

Symbol	Description
Circle with cross	PLAZA PAVING - HISTORIC CORE



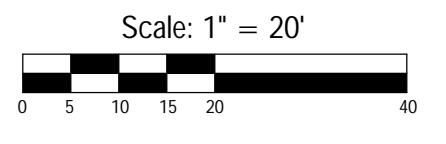
INTENT STATEMENT:
THE BY-PASS BRIDGE/ALCAZAR LOT AREA
 The landscape design intent for the bypass bridge and landscape restoration is to carefully site the bridge support structures to minimize impact and disturbance to the existing canyon landscape. In the disturbed zones or graded slopes the landscape will be fully restored with native and naturalized vegetation with irrigation. Existing vegetation outside of the disturbed areas will be protected from damage during the restoration process. Specific species are to yet to be determined.

PLAZA DE CALIFORNIA
 The design intent for the Plaza de California is to unify it as a place with a high quality paving system that is sympathetic to the historic look and feel of the 1915 Expo. The historic replica of the wood planters and the citrus trees will be maintained.

AS A MINIMUM, ALL EXISTING & MANUFACTURED SLOPES GREATER THAN 4:1 AND OVER FIVE FEET IN VERTICAL HEIGHT SHALL BE REVEGETATED PER THE CITY-WIDE LANDSCAPE REGULATIONS

NOTE: ALL LANDSCAPE AREAS TO HAVE AN AUTOMATIC IRRIGATION SYSTEM

NOTE: ALL PARKING AREAS SHALL PROVIDE A MINIMUM OF 5% OF THE PARKING AREA AS LANDSCAPING. WITHIN THE PARKING AREA, ONE 24" BOX TREE SHALL BE PROVIDED WITHIN 30 FEET OF EACH PARKING SPACE. THE REQUIRED TREES SHALL BE LOCATED IN A MINIMUM OF 40 SQ. FT. OF LANDSCAPE AREA. PARKING AREAS ADJACENT TO PUBLIC RIGHTS-OF-WAY SHALL PROVIDE A 30 IN. HIGH SCREEN.



Prepared By: Civitas, Inc
Name: Civitas, Inc
Address: 1200 Bannock St, Denver, CO 80204
Phone #: (303) 571-0053

Project Address:

Project Name: BALBOA PARK PLAZA
 Plaza de Panama Circulation and Parking Structure Project

Sheet Title: Bypass Bridge, Alcazar Lot & West Prado

Revision 14: _____
Revision 13: _____
Revision 12: _____
Revision 11: _____
Revision 10: _____
Revision 9: _____
Revision 8: _____
Revision 7: _____
Revision 6: 4/11/12
Revision 5: 3/7/12
Revision 4: 1/12/11
Revision 3: 10/14/11
Revision 2: 10/14/11
Revision 1: 5/03/11

Original Date: 3/11/11

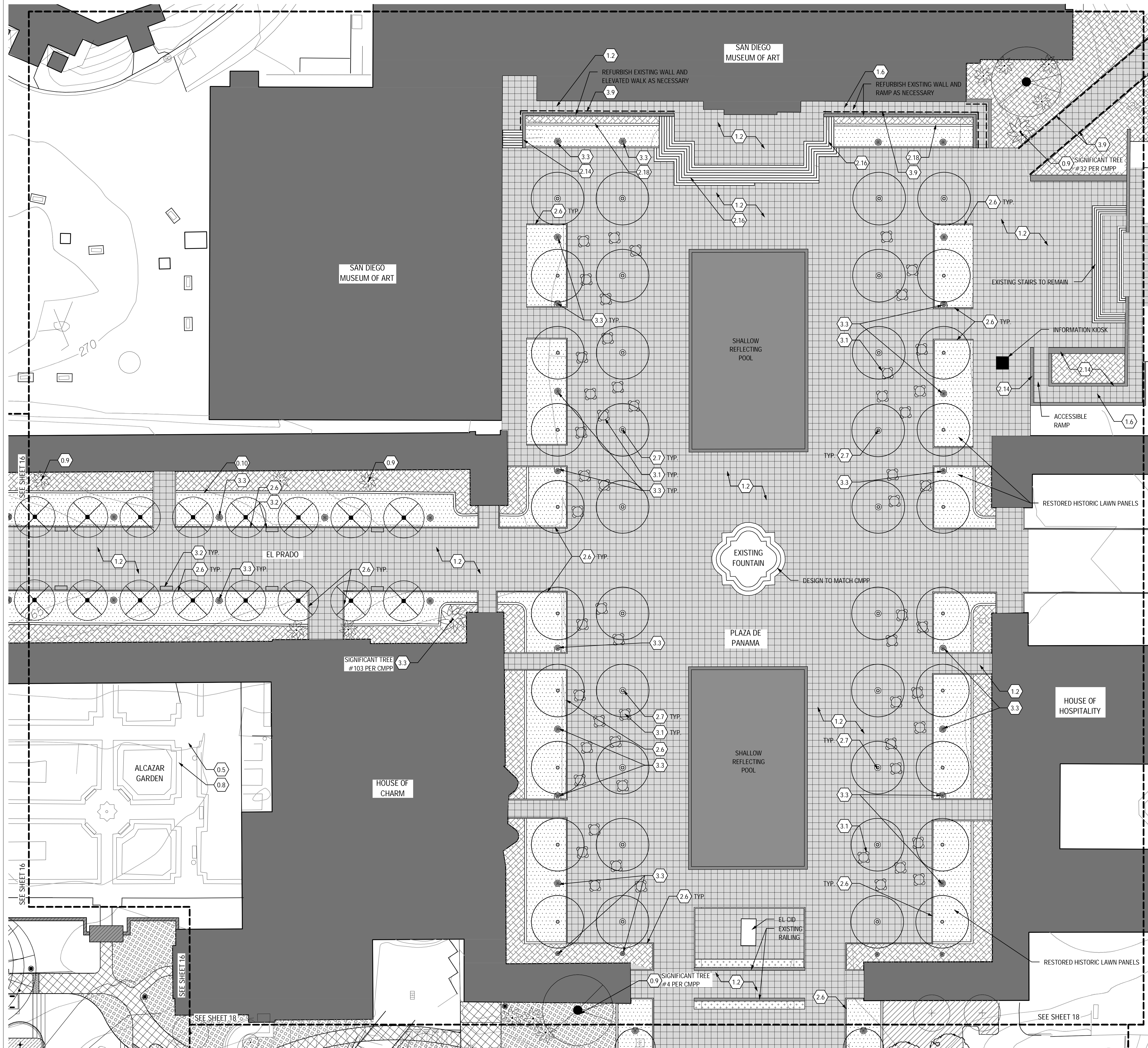
Sheet 16 of 43

DEP # 233958

BALBOA PARK PLAZA

Plaza de Panama Circulation and Parking Structure Project

Plaza de Panama



TREE LEGEND

- EL PRADO TREE (SP. TBD)
- PLAZA DE PANAMA TREE (SP. TBD)
- JAPANESE FRIENDSHIP GARDEN TREE (SP. TBD)
- ESPLANADE TREE (SP. TBD)
- CABRILLO CANYON TREE (SP. TBD)
- AUSTRALIAN CANYON TREE (SP. TBD)
- TRAM PROMENADE TREE
- SHADE CANOPY TREE
- PARKING GARAGE TREE
- PALM CANYON PALM TREE (SP. TBD)
- PALM TREE (SMALL) (SP. TBD)
- EVERGREEN TREE (SP. TBD)

PLANTING LEGEND

- AUSTRALIAN CANYON LANDSCAPE
- PALM CANYON UNDERSTORY RESTORATION
- HISTORIC CORE FOUNDATION PLANTING
- CABRILLO CANYON LANDSCAPE
- JAPANESE FRIENDSHIP GARDEN LANDSCAPE
- EXISTING SHRUBS, SUPPLEMENT AS NEEDED
- SOD
- WATER QUALITY ORNAMENTAL TREATMENT
- CALIFORNIA GARDENS
- SHRUB PLANTING
- ANNUALS
- VINES

INTENT STATEMENT:

EL PRADO
The landscape design intent for the Prado is to restore it to a pedestrian oriented and formal circulation spine. The original roadway width will be restored and reinforced with a formal organization of ornamental trees and historic pedestrian lights. The foundation plantings will be thinned to include low ornamental plantings and bougainvillea espalier.

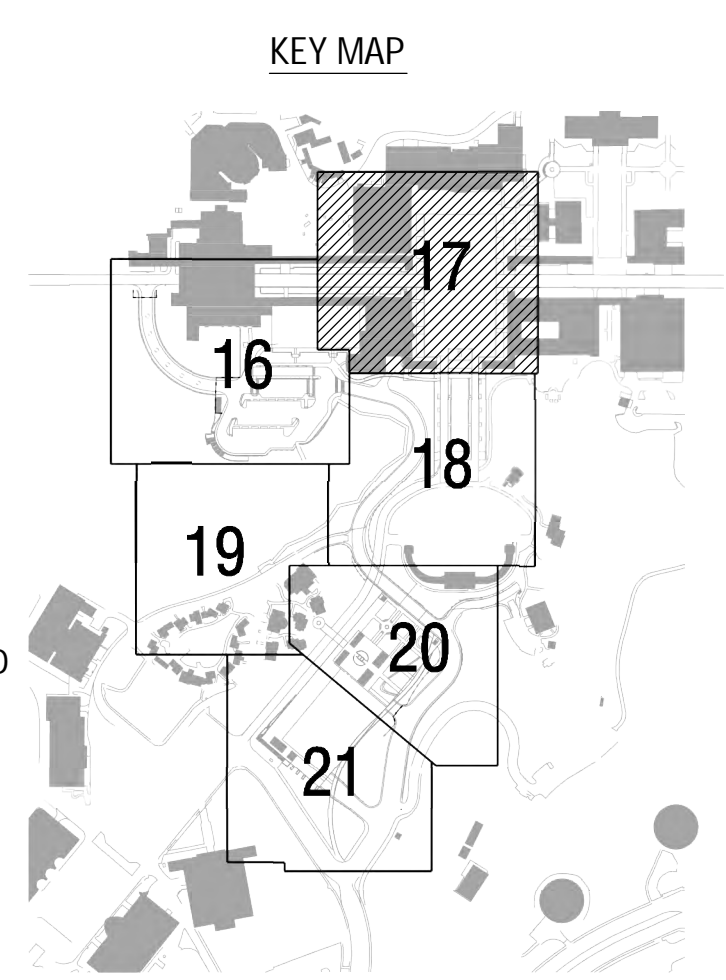
PLAZA DE PANAMA
The design intent for the Plaza de Panama to restore the fundamental character and function of the 1915 Expo while creating the conditions and materialization that will support the modern day needs and functionality. High quality paving, new shade trees and perhaps water features and sculpture will serve to animate the space and restore it the grand and central public gathering space it was intended to be.

KEYNOTES

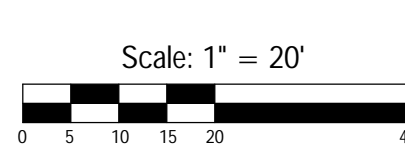
- 0.0 EXISTING CONDITIONS
- 0.1 EXISTING UTILITY
- 0.2 EXISTING MANHOLE
- 0.3 EXISTING UTILITY POLE
- 0.4 EXISTING LIGHT POLE
- 0.5 EXISTING CONCRETE PAVING
- 0.6 EXISTING ASPHALT PAVING
- 0.7 EXISTING LAWN
- 0.8 EXISTING SHRUB(S)
- 0.9 EXISTING TREE(S)
- 0.10 EXISTING CONCRETE MOW BAND
- 1.0 PAVING
- 1.1 CENTENNIAL ROAD
- 1.2 HISTORIC CORE PAVING
- 1.3 PEDESTRIAN PAVING (COMPLIMENTARY TO THE HISTORIC CORE PAVING MATERIAL)
- 1.4 ASPHALT
- 1.5 STABILIZED DECOMPOSED GRANITE PAVING
- 1.6 ACCESSIBLE RAMP
- 1.7 TRUNCATED DOMES
- 2.0 STRUCTURES
- 2.1 VEHICULAR BYPASS BRIDGE
- 2.2 MORTAR SET STACKED STONE RETAINING WALL
- 2.3 PALM CANYON BOARDWALK EXTENSION
- 2.4 HOUSE OF CHARM PEDESTRIAN BRIDGE/WALKWAY
- 2.5 ALCAZAR PARKING LOT WALL/COLUMNS
- 2.6 4\"/>

MATERIAL LEGEND

- PLAZA PAVING - HISTORIC CORE
- PEDESTRIAN PAVING - NON-HISTORIC CORE
- STABILIZED DECOMPOSED GRANITE PAVING



NOTE: ALL LANDSCAPE AREAS TO HAVE AN AUTOMATIC IRRIGATION SYSTEM

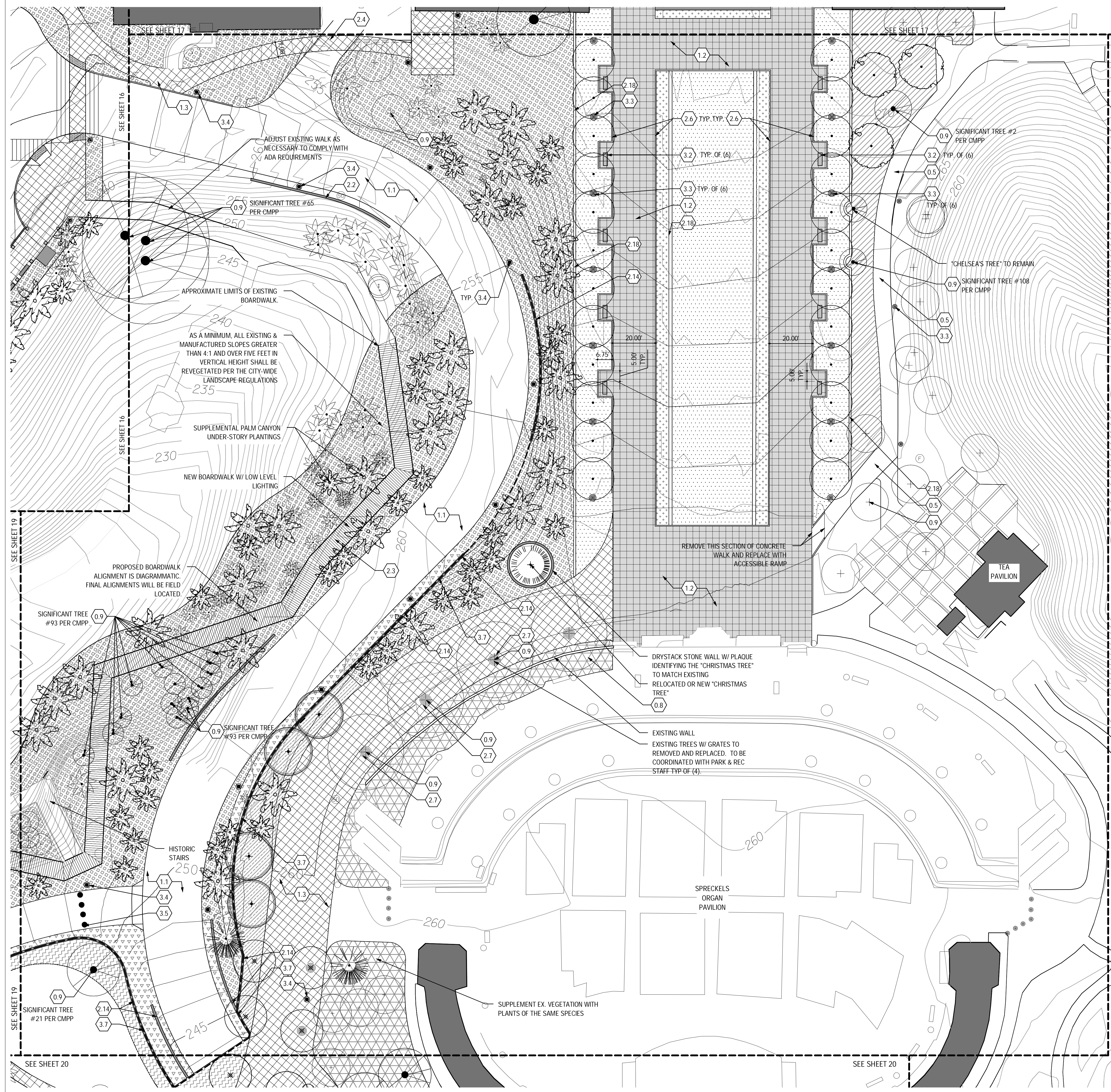


Prepared By:	Civitas, Inc	Revision 14:	
Name:		Revision 13:	
Address:	1200 Bannock St	Revision 12:	3/7/12
	Denver, CO 80204	Revision 11:	
Phone #:	(303) 571-0053	Revision 10:	
Project Address:		Revision 9:	
		Revision 8:	
		Revision 7:	
		Revision 6:	4/4/12
		Revision 5:	3/7/12
Project Name:	BALBOA PARK PLAZA	Revision 4:	11/22/11
	Plaza de Panama Circulation	Revision 3:	10/14/11
	and Parking Structure Project	Revision 2:	10/14/11
Sheet Title:	Plaza de Panama	Revision 1:	5/03/11
		Original Date:	3/11/11
		Sheet	17 of 43
		DEP #	233958

BALBOA PARK PLAZA

Plaza de Panama Circulation and Parking Structure Project

Esplanade/Organ Pavilion



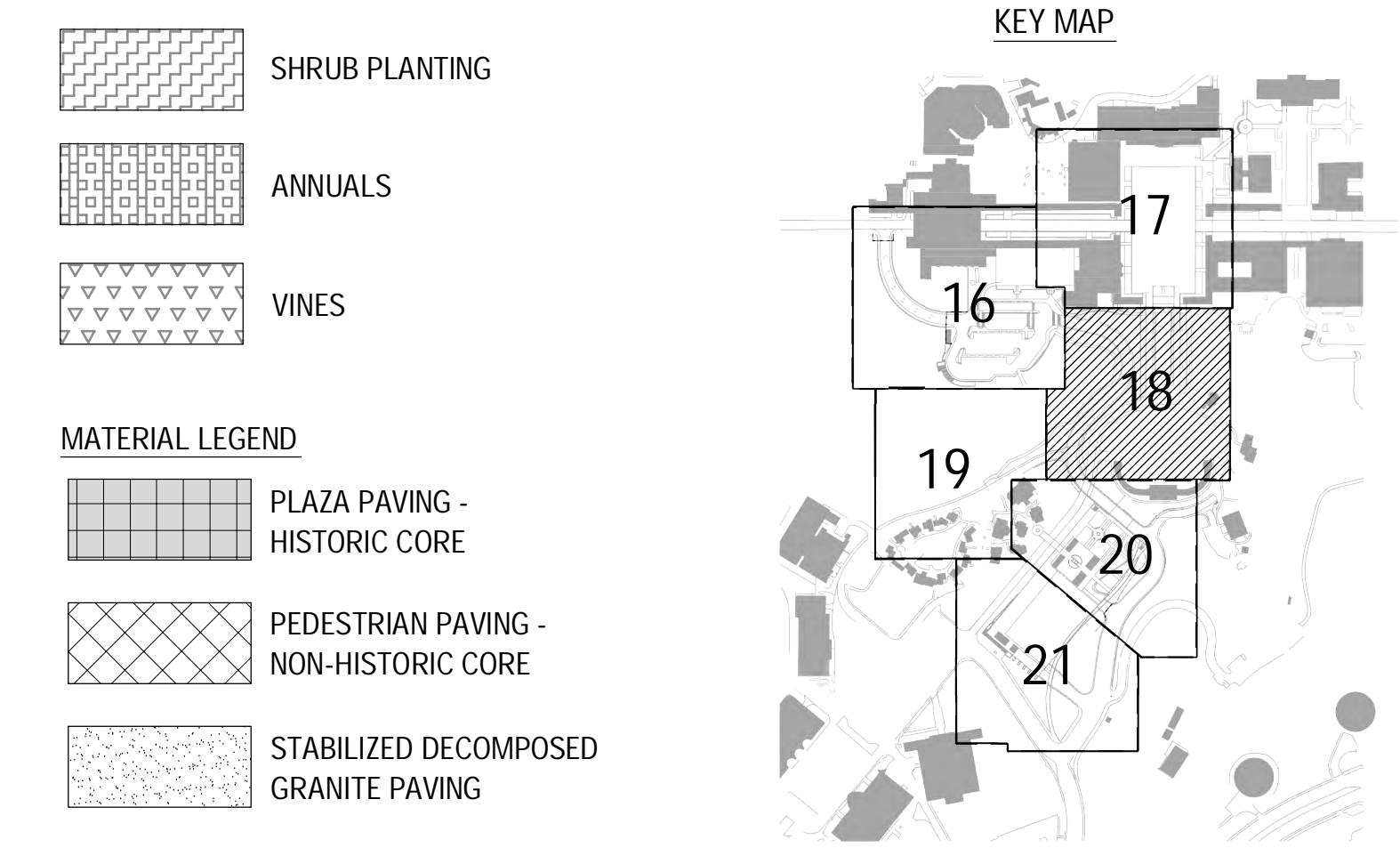
- TREE LEGEND**
- EL PRADO TREE (SP. TBD)
 - PLAZA DE PANAMA TREE (SP. TBD)
 - JAPANESE FRIENDSHIP GARDEN TREE (SP. TBD)
 - ESPLANADE TREE (SP. TBD)
 - CABRILLO CANYON TREE (SP. TBD)
 - AUSTRALIAN CANYON TREE (SP. TBD)
 - TRAM PROMENADE TREE
 - SHADE CANOPY TREE
 - PARKING GARAGE TREE
 - PALM CANYON PALM TREE (SP. TBD)
 - PALM TREE (SMALL) (SP. TBD)
 - EVERGREEN TREE (SP. TBD)

- PLANTING LEGEND**
- AUSTRALIAN CANYON LANDSCAPE
 - PALM CANYON UNDERSTORY RESTORATION
 - HISTORIC CORE FOUNDATION PLANTING
 - CABRILLO CANYON LANDSCAPE
 - JAPANESE FRIENDSHIP GARDEN LANDSCAPE
 - EXISTING SHRUBS, SUPPLEMENT AS NEEDED
 - SOD
 - WATER QUALITY ORNAMENTAL TREATMENT
 - CALIFORNIA GARDENS

INTENT STATEMENT:

The Esplanade
The design intent for the Esplanade is to restore the grand formal and axial character that unifies the Plaza de Panama with the Organ Pavilion. The Esplanade will feature a widening of the central median, special pedestrian paving and a formal organization of ornamental trees, benches and historic pedestrian lights. The East and west edges of the Esplanade will be defined by low freestanding walls that complement the historic character of the buildings. The grade condition between the walls will give the Esplanade a sloping plane with level edges, while outside of the Esplanade walls the grades will return to a sloped canyon condition.

- KEYNOTES**
- | | |
|------|--|
| 0.0 | EXISTING CONDITIONS |
| 0.1 | EXISTING UTILITY |
| 0.2 | EXISTING MANHOLE |
| 0.3 | EXISTING UTILITY POLE |
| 0.4 | EXISTING LIGHT POLE |
| 0.5 | EXISTING CONCRETE PAVING |
| 0.6 | EXISTING ASPHALT PAVING |
| 0.7 | EXISTING LAWN |
| 0.8 | EXISTING SHRUB(S) |
| 0.9 | EXISTING TREE(S) |
| 0.10 | EXISTING CONCRETE MOW BAND |
| 1.0 | PAVING |
| 1.1 | CENTENNIAL ROAD |
| 1.2 | HISTORIC CORE PAVING |
| 1.3 | PEDESTRIAN PAVING (COMPLIMENTARY TO THE HISTORIC CORE PAVING MATERIAL) |
| 1.4 | ASPHALT |
| 1.5 | STABILIZED DECOMPOSED GRANITE PAVING |
| 1.6 | ACCESSIBLE RAMP |
| 1.7 | TRUNCATED DOMES |
| 2.0 | STRUCTURES |
| 2.1 | VEHICULAR BYPASS BRIDGE |
| 2.2 | MORTAR SET STACKED STONE RETAINING WALL |
| 2.3 | PALM CANYON BOARDWALK EXTENSION |
| 2.4 | HOUSE OF CHARM PEDESTRIAN BRIDGE/WALKWAY |
| 2.5 | ALCAZAR PARKING LOT WALL/COLUMNS |
| 2.6 | 4" CONC. CURB |
| 2.7 | TREE GRATE/OPENING |
| 2.8 | OPEN AIR PAVILIONS |
| 2.9 | PROGRAMMED PAVILIONS |
| 2.10 | TREE OPENINGS IN GARAGE STRUCTURE |
| 2.11 | STAIR/ELEVATOR CORE |
| 2.12 | STAIRWELL |
| 2.13 | TERRACED STAIRS |
| 2.14 | LIGHT SAND FINISH CONCRETE RETAINING WALL |
| 2.15 | PROMENADE/TRAMWAY SEAT WALL |
| 2.16 | ART MUSEUM PLAZA STAIRS |
| 2.17 | REFLECTING POOLS |
| 2.18 | CONCRETE MOW BAND |
| 3.0 | SITE FURNISHINGS & SIGNAGE |
| 3.1 | MOVABLE TABLES AND CHAIRS |
| 3.2 | PARK BENCH |
| 3.3 | HISTORIC LIGHT FIXTURE REPRODUCTION W/ CONCRETE COLLAR |
| 3.4 | CMPP APPROVED LIGHT FIXTURE W/ CONCRETE COLLAR |
| 3.5 | ELECTRIC BOLLARD |
| 3.6 | REMOVABLE BOLLARD |
| 3.7 | HISTORIC LANDSCAPE GUARDRAIL |
| 3.8 | ROOFTOP PARK GUARDRAIL |
| 3.9 | PLAZA HANDRAIL |
| 3.10 | TABLES & CHAIRS (FIXED) |



Prepared By: Civitas, Inc
Name: Civitas, Inc
Address: 1200 Bannock Street, Denver, CO 80204
Phone #: (303) 571-0053

Project Address:

Project Name: BALBOA PARK PLAZA
 Plaza de Panama Circulation and Parking Structure Project

Sheet Title: Esplanade/Organ Pavilion

Scale: 1" = 20'

Revision Log:

Revision 14:	
Revision 13:	
Revision 12:	
Revision 11:	
Revision 10:	
Revision 9:	
Revision 8:	
Revision 7:	
Revision 6:	4/11/12
Revision 5:	3/7/12
Revision 4:	1/12/11
Revision 3:	10/14/11
Revision 2:	10/14/11
Revision 1:	5/03/11

Original Date: 3/11/11

Sheet: 18 of 43

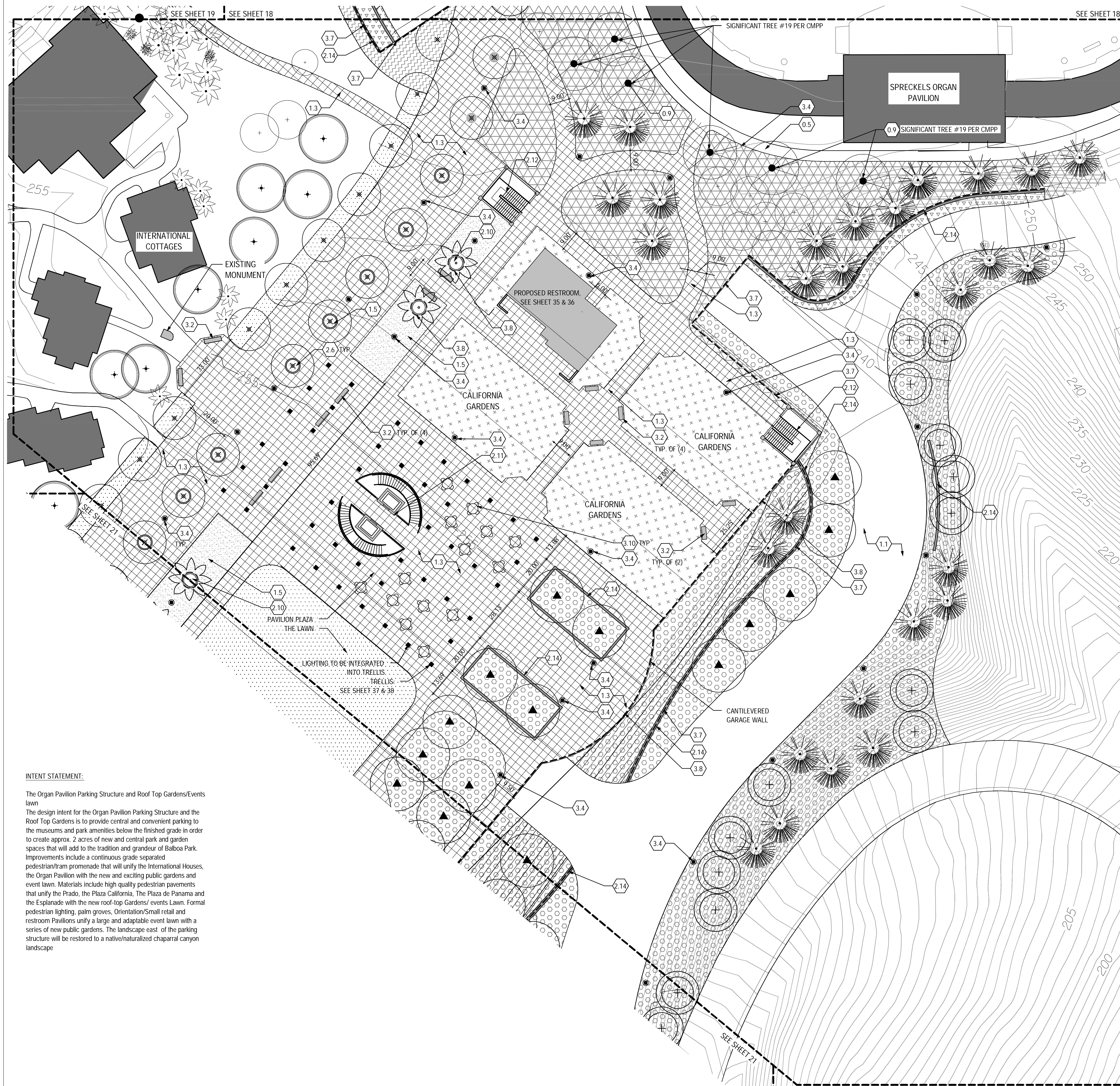
DEP #: 233958

NOTE: ALL LANDSCAPE AREAS TO HAVE AN AUTOMATIC IRRIGATION SYSTEM

BALBOA PARK PLAZA

Plaza de Panama Circulation and Parking Structure Project

Northern Portion Rooftop Park



TREE LEGEND

- EL PRADO TREE (SP. TBD)
- PLAZA DE PANAMA TREE (SP. TBD)
- JAPANESE FRIENDSHIP GARDEN TREE (SP. TBD)
- ESPLANADE TREE (SP. TBD)
- CABRILLO CANYON TREE (SP. TBD)
- AUSTRALIAN CANYON TREE (SP. TBD)
- TRAM PROMENADE TREE
- SHADE CANOPY TREE
- PARKING GARAGE TREE
- PALM CANYON PALM TREE (SP. TBD)
- PALM TREE (SMALL) (SP. TBD)
- EVERGREEN TREE (SP. TBD)

PLANTING LEGEND

- AUSTRALIAN CANYON LANDSCAPE
- PALM CANYON UNDERSTORY RESTORATION
- HISTORIC CORE FOUNDATION PLANTING
- CABRILLO CANYON LANDSCAPE
- JAPANESE FRIENDSHIP GARDEN LANDSCAPE
- EXISTING SHRUBS SUPPLEMENT AS NEEDED
- SOD
- WATER QUALITY ORNAMENTAL TREATMENT
- CALIFORNIA GARDENS

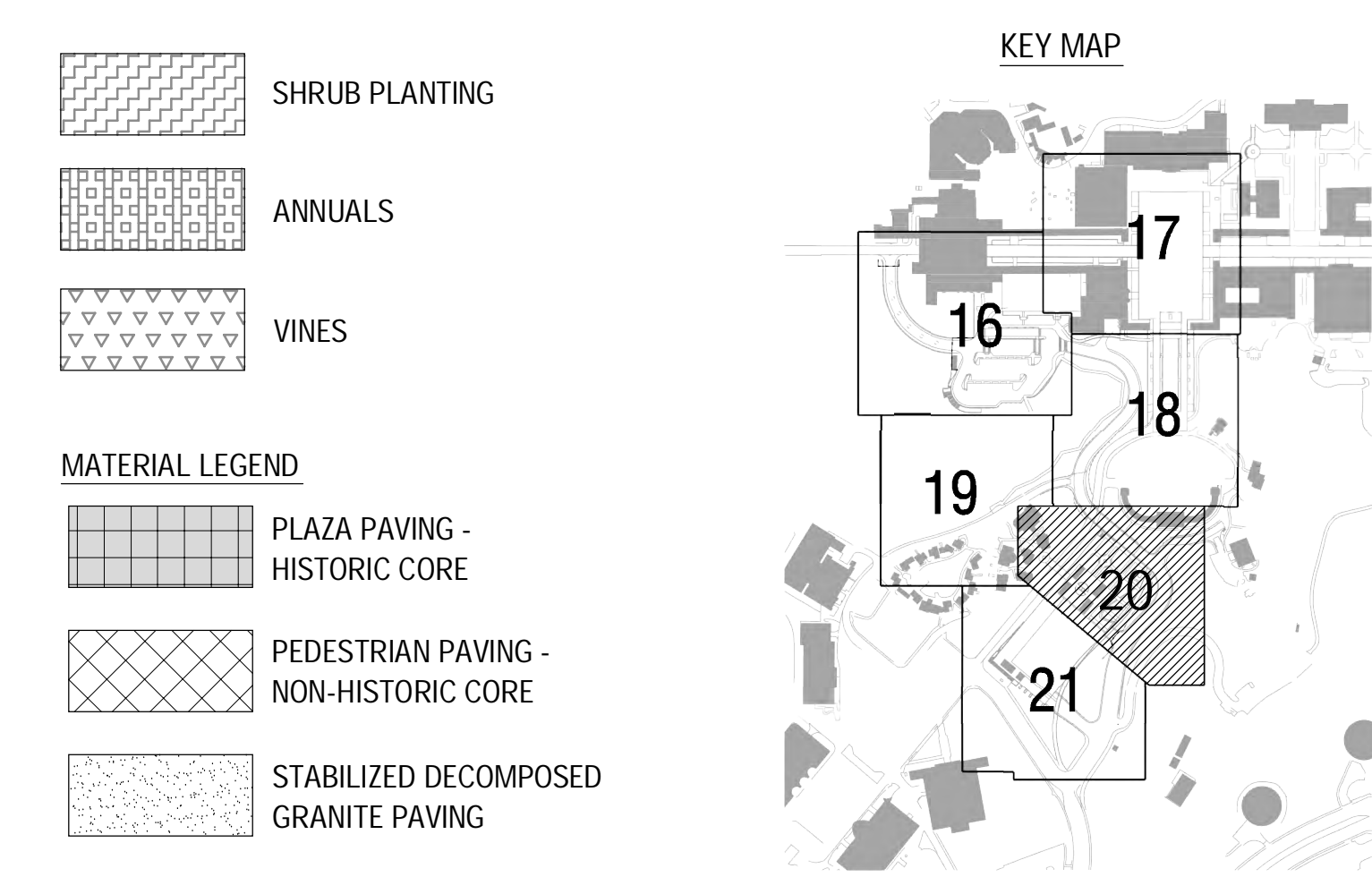
KEYNOTES

- 0.0** EXISTING CONDITIONS
 - 0.1 EXISTING UTILITY
 - 0.2 EXISTING MANHOLE
 - 0.3 EXISTING UTILITY POLE
 - 0.4 EXISTING LIGHT POLE
 - 0.5 EXISTING CONCRETE PAVING
 - 0.6 EXISTING ASPHALT PAVING
 - 0.7 EXISTING LAWN
 - 0.8 EXISTING SHRUB(S)
 - 0.9 EXISTING TREE(S)
 - 0.10 EXISTING CONCRETE MOW BAND
- 1.0** PAVING
 - 1.1 CENTENNIAL ROAD
 - 1.2 HISTORIC CORE PAVING
 - 1.3 PEDESTRIAN PAVING (COMPLIMENTARY TO THE HISTORIC CORE PAVING MATERIAL)
 - 1.4 ASPHALT
 - 1.5 STABILIZED DECOMPOSED GRANITE PAVING
 - 1.6 ACCESSIBLE RAMP
 - 1.7 TRUNCATED DOMES
- 2.0** STRUCTURES
 - 2.1 VEHICULAR BYPASS BRIDGE
 - 2.2 MORTAR SET STACKED STONE RETAINING WALL
 - 2.3 PALM CANYON BOARDWALK EXTENSION
 - 2.4 HOUSE OF CHARM PEDESTRIAN BRIDGE/WALKWAY
 - 2.5 ALCAZAR PARKING LOT WALL/COLUMNS
 - 2.6 4" CONC. CURB
 - 2.7 TREE GRATE/OPENING
 - 2.8 OPEN AIR PAVILIONS
 - 2.9 PROGRAMMED PAVILIONS
 - 2.10 TREE OPENINGS IN GARAGE STRUCTURE
 - 2.11 STAIR/ELEVATOR CORE
 - 2.12 STAIRWELL
 - 2.13 TERRACED STAIRS
 - 2.14 LIGHT SAND FINISH CONCRETE RETAINING WALL
 - 2.15 PROMENADE/TRAMWAY SEAT WALL
 - 2.16 ART MUSEUM PLAZA STAIRS
 - 2.17 REFLECTING POOLS
 - 2.18 CONCRETE MOW BAND
- 3.0** SITE FURNISHINGS & SIGNAGE
 - 3.1 MOVABLE TABLES AND CHAIRS
 - 3.2 PARK BENCH
 - 3.3 HISTORIC LIGHT FIXTURE REPRODUCTION W/ CONCRETE COLLAR
 - 3.4 CMPP APPROVED LIGHT FIXTURE W/ CONCRETE COLLAR
 - 3.5 ELECTRIC BOLLARD
 - 3.6 REMOVABLE BOLLARD
 - 3.7 HISTORIC LANDSCAPE GUARDRAIL
 - 3.8 ROOFTOP PARK GUARDRAIL
 - 3.9 PLAZA HANDRAIL
 - 3.10 TABLES & CHAIRS (FIXED)

INTENT STATEMENT:

The Organ Pavilion Parking Structure and Roof Top Gardens/Events lawn
 The design intent for the Organ Pavilion Parking Structure and the Roof Top Gardens is to provide central and convenient parking to the museums and park amenities below the finished grade in order to create approx. 2 acres of new and central park and garden spaces that will add to the tradition and grandeur of Balboa Park. Improvements include a continuous grade separated pedestrian/tram promenade that will unify the International Houses, the Organ Pavilion with the new and exciting public gardens and event lawn. Materials include high quality pedestrian pavements that unify the Prado, the Plaza California, The Plaza de Panama and the Esplanade with the new roof-top Gardens' events Lawn. Formal pedestrian lighting, palm groves, Orientation/Small retail and restroom Pavilions unify a large and adaptable event lawn with a series of new public gardens. The landscape east of the parking structure will be restored to a native/naturalized chaparral canyon landscape

NOTE: ALL LANDSCAPE AREAS TO HAVE AN AUTOMATIC IRRIGATION SYSTEM



BALBOA PARK PLAZA

Plaza de Panama Circulation and Parking Structure Project

Southern Portion Rooftop Park



TREE LEGEND

- EL PRADO TREE (SP. TBD)
- PLAZA DE PANAMA TREE (SP. TBD)
- JAPANESE FRIENDSHIP GARDEN TREE (SP. TBD)
- ESPLANADE TREE (SP. TBD)
- CABRILLO CANYON TREE (SP. TBD)
- AUSTRALIAN CANYON TREE. (SP. TBD)
- TRAM PROMENADE TREE
- SHADE CANOPY TREE
- PARKING GARAGE TREE
- PALM CANYON PALM TREE. (SP. TBD)
- PALM TREE (SMALL). (SP. TBD)
- EVERGREEN TREE (SP. TBD)

PLANTING LEGEND

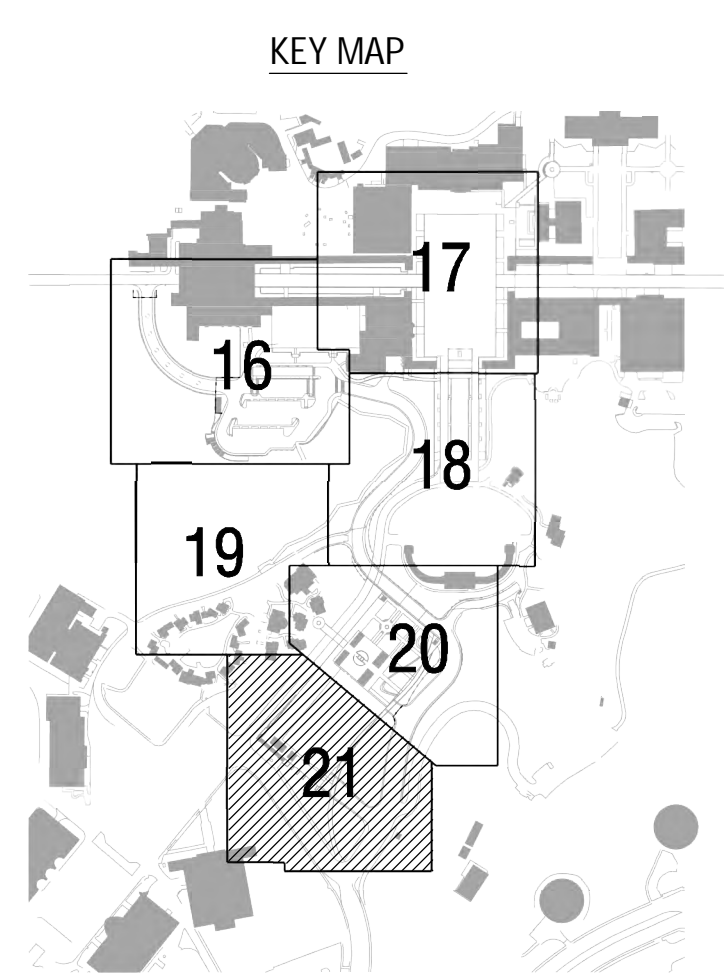
- AUSTRALIAN CANYON LANDSCAPE
- PALM CANYON UNDERSTORY RESTORATION
- HISTORIC CORE FOUNDATION PLANTING
- CABRILLO CANYON LANDSCAPE
- JAPANESE FRIENDSHIP GARDEN LANDSCAPE
- EXISTING SHRUBS, SUPPLEMENT AS NEEDED
- SOD
- WATER QUALITY ORNAMENTAL TREATMENT
- CALIFORNIA GARDENS

KEYNOTES

- 0.0 EXISTING CONDITIONS
 - 0.1 EXISTING UTILITY
 - 0.2 EXISTING MANHOLE
 - 0.3 EXISTING UTILITY POLE
 - 0.4 EXISTING LIGHT POLE
 - 0.5 EXISTING CONCRETE PAVING
 - 0.6 EXISTING ASPHALT PAVING
 - 0.7 EXISTING LAWN
 - 0.8 EXISTING SHRUB(S)
 - 0.9 EXISTING TREE(S)
 - 0.10 EXISTING CONCRETE MOW BAND
- 1.0 PAVING
 - 1.1 CENTENNIAL ROAD
 - 1.2 HISTORIC CORE PAVING
 - 1.3 PEDESTRIAN PAVING (COMPLIMENTARY TO THE HISTORIC CORE PAVING MATERIAL)
 - 1.4 ASPHALT
 - 1.5 STABILIZED DECOMPOSED GRANITE PAVING
 - 1.6 ACCESSIBLE RAMP
 - 1.7 TRUNCATED DOMES
- 2.0 STRUCTURES
 - 2.1 VEHICULAR BYPASS BRIDGE
 - 2.2 MORTAR SET STACKED STONE RETAINING WALL
 - 2.3 PALM CANYON BOARDWALK EXTENSION
 - 2.4 HOUSE OF CHARM PEDESTRIAN BRIDGE/WALKWAY
 - 2.5 ALCAZAR PARKING LOT WALL/COLUMNS
 - 2.6 4" CONC. CURB
 - 2.7 TREE GRATE/OPENING
 - 2.8 OPEN AIR PAVILIONS
 - 2.9 PROGRAMMED PAVILIONS
 - 2.10 TREE OPENINGS IN GARAGE STRUCTURE
 - 2.11 STAIR/ELEVATOR CORE
 - 2.12 STAIRWELL
 - 2.13 TERRACED STAIRS
 - 2.14 LIGHT SAND FINISH CONCRETE RETAINING WALL
 - 2.15 PROMENADE/TRAMWAY SEAT WALL
 - 2.16 ART MUSEUM PLAZA STAIRS
 - 2.17 REFLECTING POOLS
 - 2.18 CONCRETE MOW BAND
- 3.0 SITE FURNISHINGS & SIGNAGE
 - 3.1 MOVABLE TABLES AND CHAIRS
 - 3.2 PARK BENCH
 - 3.3 HISTORIC LIGHT FIXTURE REPRODUCTION W/ CONCRETE COLLAR
 - 3.4 CMPP APPROVED LIGHT FIXTURE W/ CONCRETE COLLAR
 - 3.5 ELECTRIC BOLLARD
 - 3.6 REMOVABLE BOLLARD
 - 3.7 HISTORIC LANDSCAPE GUARDRAIL
 - 3.8 ROOFTOP PARK GUARDRAIL
 - 3.9 PLAZA HANDRAIL
 - 3.10 TABLES & CHAIRS (FIXED)

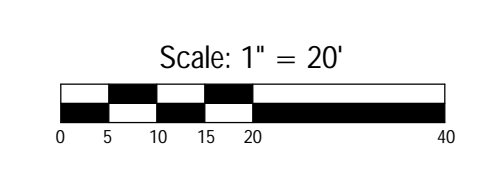
DTL/SHT.#

- SHRUB PLANTING
 - ANNUALS
 - VINES
- #### MATERIAL LEGEND
- PLAZA PAVING - HISTORIC CORE
 - PEDESTRIAN PAVING - NON-HISTORIC CORE
 - STABILIZED DECOMPOSED GRANITE PAVING



CIVITAS
 1200 Bannock Street
 Denver, Colorado 80204
 Tel. 303.571.0053
 Fax. 303.525.0438

NOTE: ALL LANDSCAPE AREAS TO HAVE AN AUTOMATIC IRRIGATION SYSTEM

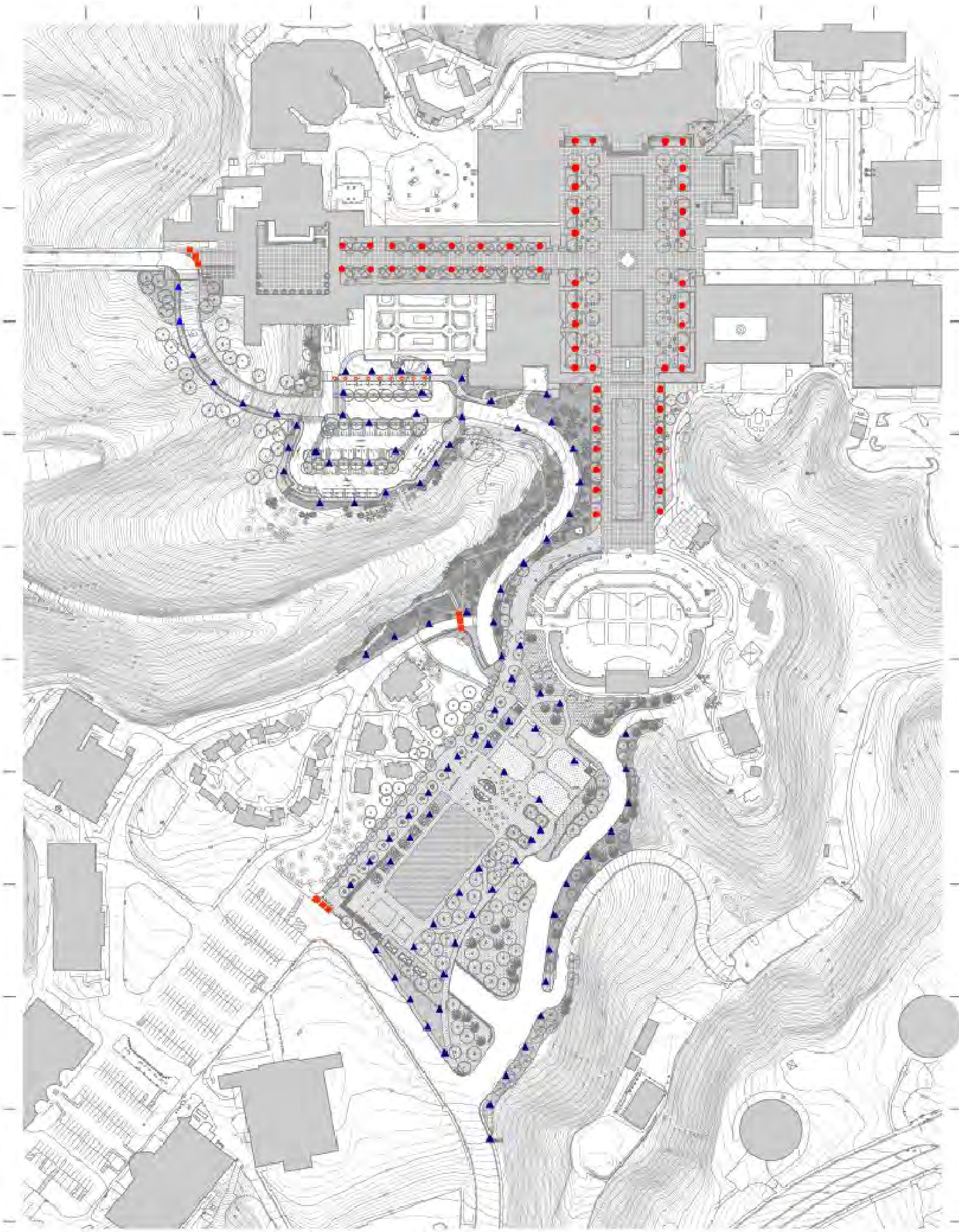


Prepared By:	Civitas, Inc	Revision 14:	
Name:		Revision 13:	
Address:	1200 Bannock St Denver, CO 80204	Revision 12:	
Phone #:	(303) 571-0053	Revision 11:	
Project Address:		Revision 10:	
		Revision 9:	
		Revision 8:	
		Revision 7:	
		Revision 6:	4/6/12
		Revision 5:	3/7/12
		Revision 4:	1/12/11
		Revision 3:	10/14/11
		Revision 2:	5/03/11
		Revision 1:	
Project Name:	BALBOA PARK PLAZA Plaza de Panama Circulation and Parking Structure Project	Original Date:	3/11/11
Sheet Title:	<i>Southern Portion Rooftop Park</i>	Sheet	21 of 43
DEP #	233958		

BALBOA PARK PLAZA

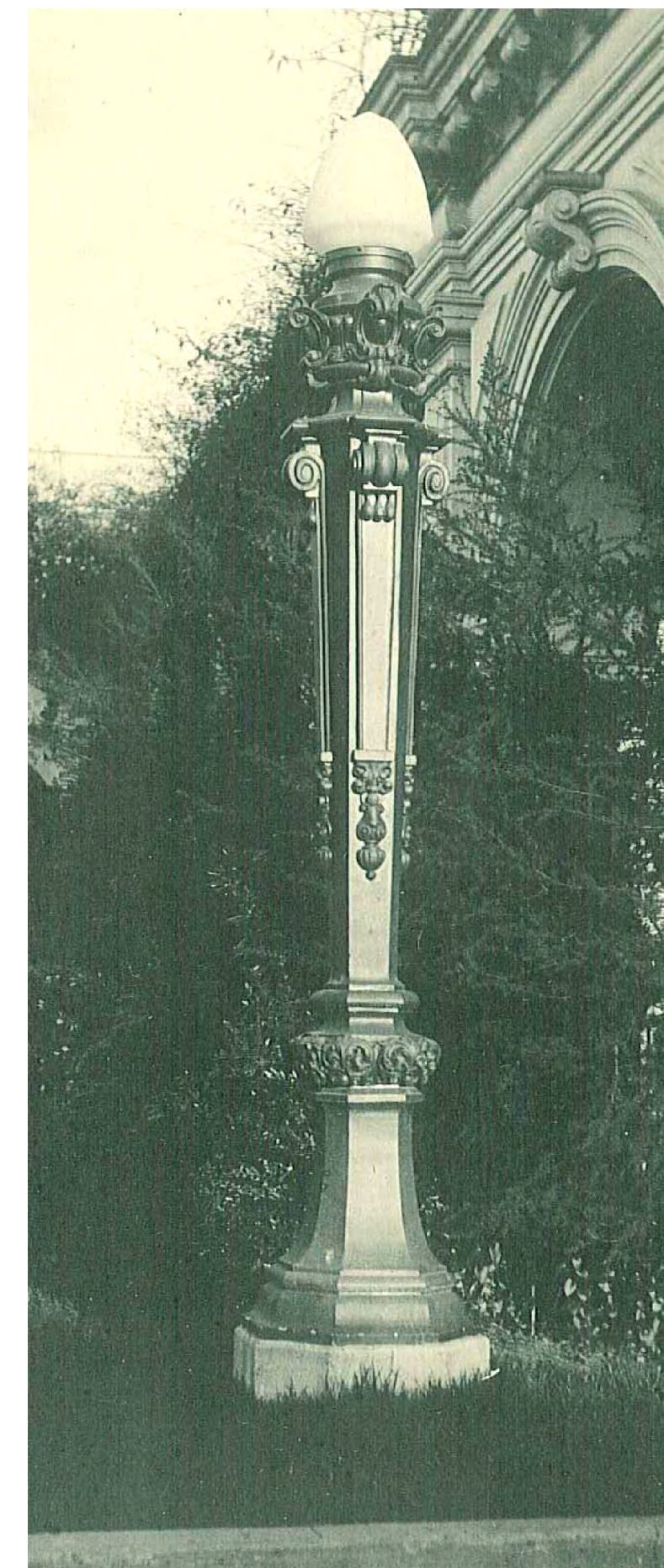
Plaza de Panama Circulation and Parking Structure Project

Lighting and bollards

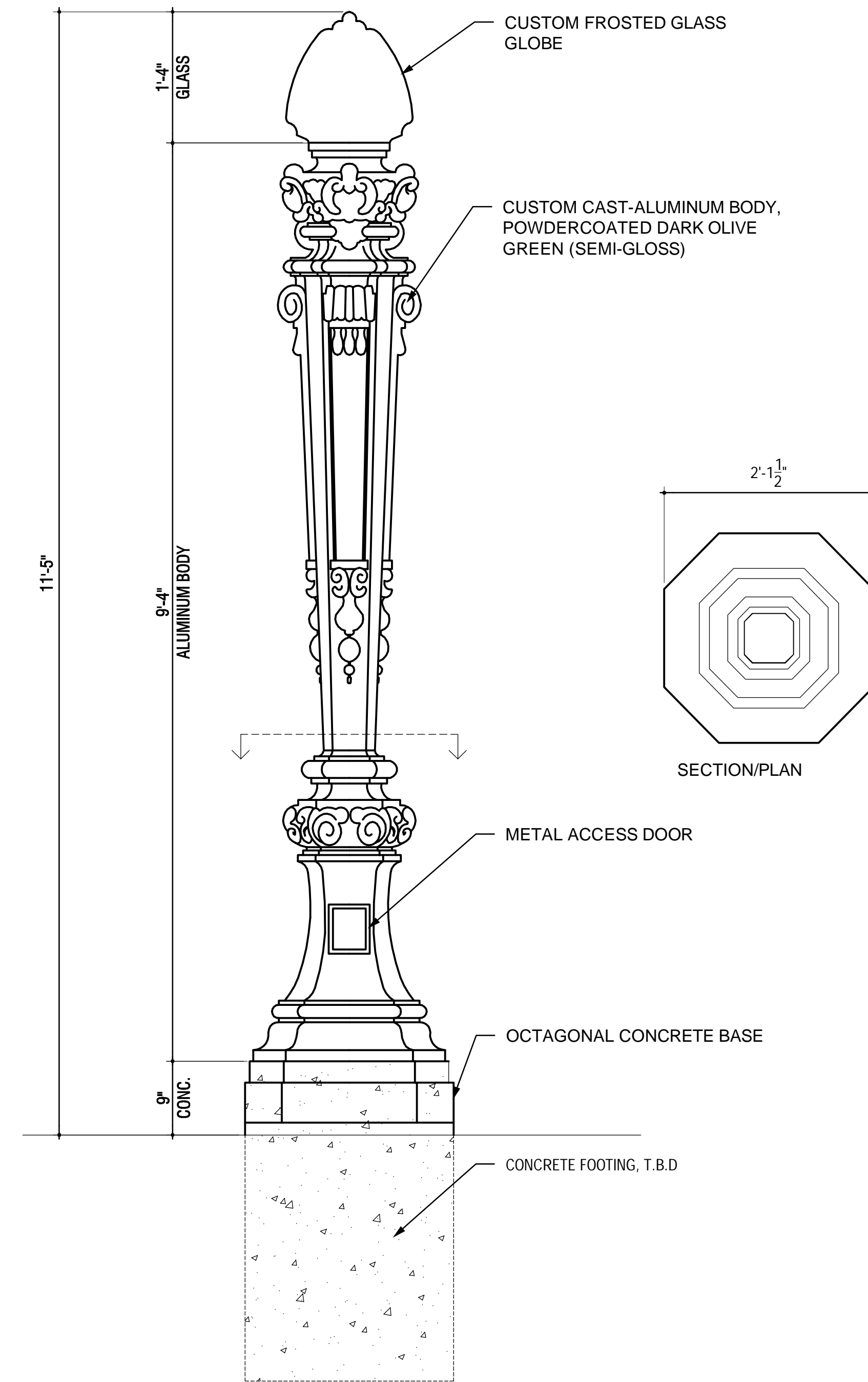


LIGHTING AND BOLLARDS

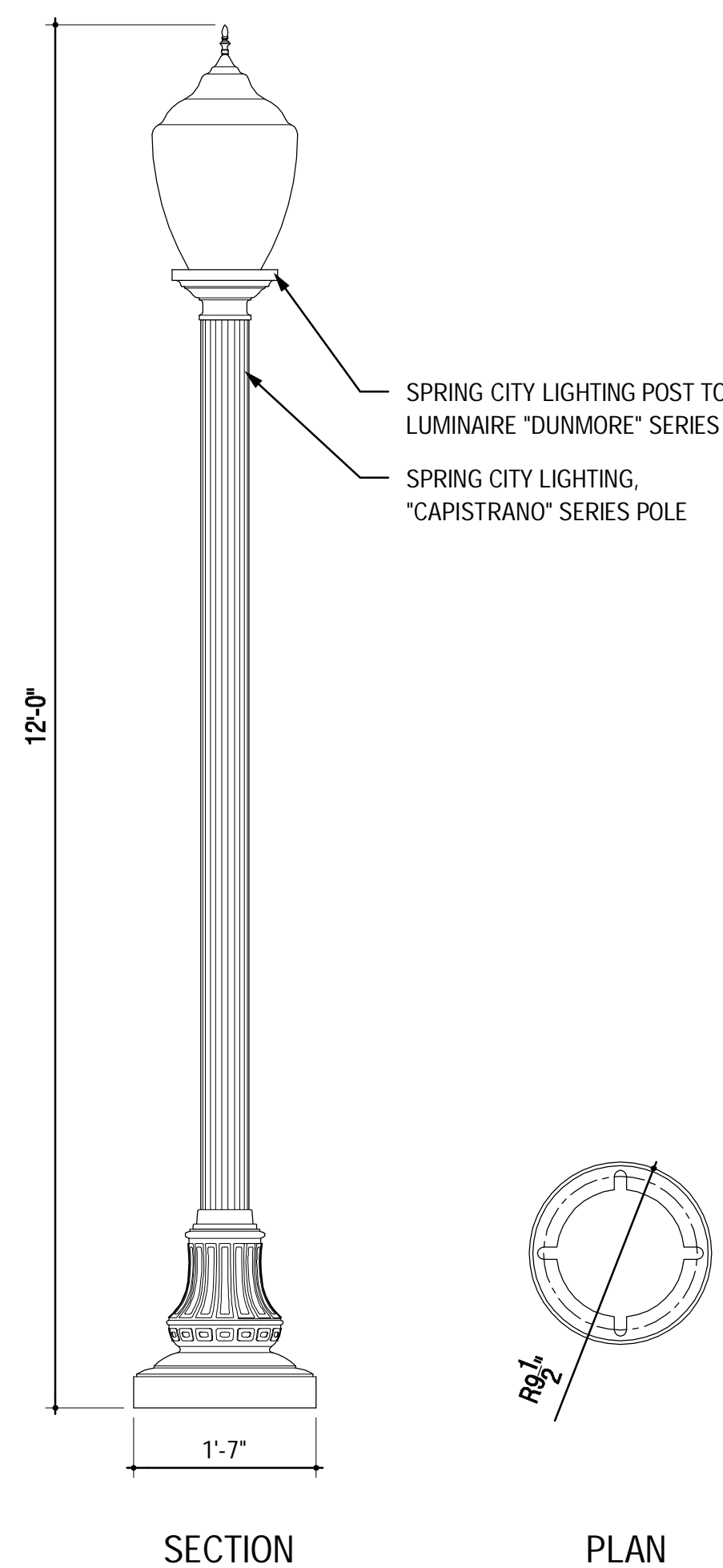
- HISTORIC REPRODUCTION FIXTURES
- ▲ CMPM APPROVED PEDESTRIAN FIXTURES
- ELECTRIC BOLLARDS
- MOVABLE BOLLARDS



1915 REPRODUCTION LIGHT



1915 REPRODUCTION LIGHT DETAIL
SCALE: 1" = 1'-0"

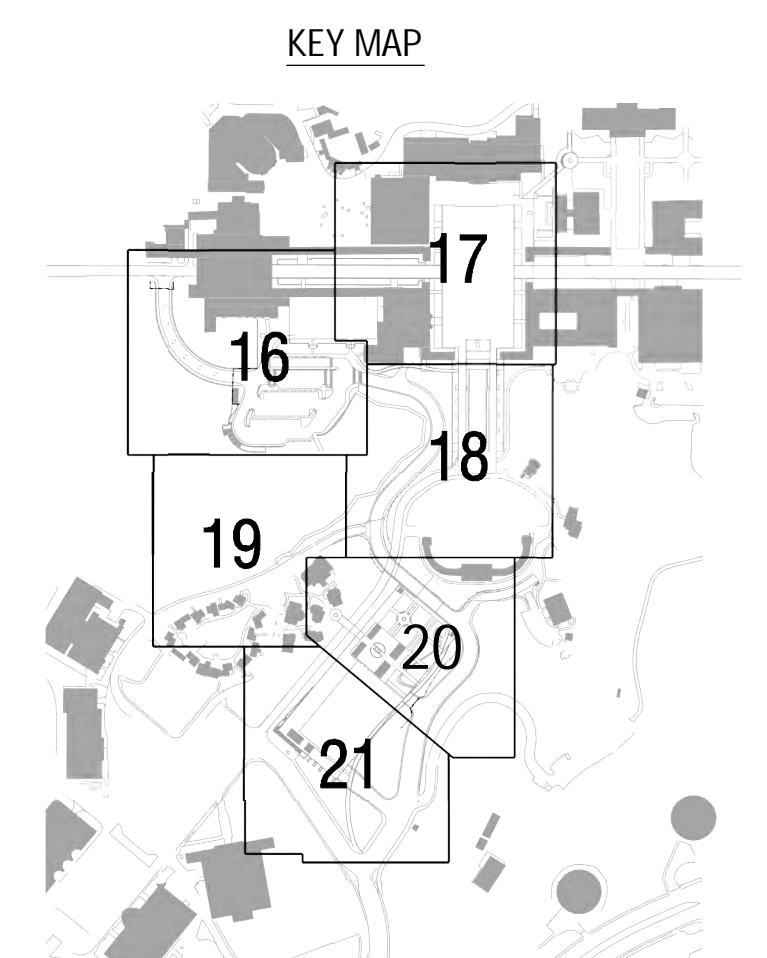


CENTRAL MESA PRECISE PLAN APPROVED FIXTURE
SCALE: 3/4" = 1'-0"



PROPOSED ELECTRIC BOLLARD DESIGN
* REMOVABLE BOLLARD TO BE SIMILAR IN STYLE WITH A 4-6" DIAMETER

KEYNOTES	DTL./SHT.#
0.0 EXISTING CONDITIONS	
0.1 EXISTING UTILITY	
0.2 EXISTING MANHOLE	
0.3 EXISTING UTILITY POLE	
0.4 EXISTING LIGHT POLE	
0.5 EXISTING CONCRETE PAVING	
0.6 EXISTING ASPHALT PAVING	
0.7 EXISTING LAWN	
0.8 EXISTING SHRUB(S)	
0.9 EXISTING TREE(S)	
0.10 EXISTING CONCRETE MOW BAND	
1.0 PAVING	
1.1 CENTENNIAL ROAD	
1.2 HISTORIC CORE PAVING	
1.3 PEDESTRIAN PAVING (COMPLIMENTARY TO THE HISTORIC CORE PAVING MATERIAL)	
1.4 ASPHALT	
1.5 STABILIZED DECOMPOSED GRANITE PAVING	
1.6 ACCESSIBLE RAMP	
1.7 TRUNCATED DOMES	
2.0 STRUCTURES	
2.1 VEHICULAR BYPASS BRIDGE	
2.2 MORTAR SET STACKED STONE RETAINING WALL	
2.3 PALM CANYON BOARDWALK EXTENSION	
2.4 HOUSE OF CHARM PEDESTRIAN BRIDGE/WALKWAY	
2.5 ALCAZAR PARKING LOT WALL/COLUMNS	
2.6 4" CONC. CURB	
2.7 TREE GRATE/OPENING	
2.8 OPEN AIR PAVILIONS	
2.9 PROGRAMMED PAVILIONS	
2.10 TREE OPENINGS IN GARAGE STRUCTURE	
2.11 STAIR/ELEVATOR CORE	
2.12 STAIRWELL	
2.13 TERRACED STAIRS	
2.14 LIGHT SAND FINISH CONCRETE RETAINING WALL	
2.15 PROMENADE/TRAMWAY SEAT WALL	
2.16 ART MUSEUM PLAZA STAIRS	
2.17 REFLECTING POOLS	
2.18 CONCRETE MOW BAND	
3.0 SITE FURNISHINGS & SIGNAGE	
3.1 MOVABLE TABLES AND CHAIRS	
3.2 PARK BENCH	
3.3 HISTORIC LIGHT FIXTURE REPRODUCTION W/ CONCRETE COLLAR	
3.4 CMPM APPROVED LIGHT FIXTURE W/ CONCRETE COLLAR	
3.5 ELECTRIC BOLLARD	
3.6 REMOVABLE BOLLARD	
3.7 HISTORIC LANDSCAPE GUARDRAIL	
3.8 ROOFTOP PARK GUARDRAIL	
3.9 PLAZA HANDRAIL	
3.10 TABLES & CHAIRS (FIXED)	



Prepared By: Civitas, Inc	Revision 14: _____
Name: _____	Revision 13: _____
Address: 1200 Bannock St Denver, CO 80204	Revision 12: _____
Phone #: (303) 571-0053	Revision 11: _____
Project Address: _____	Revision 10: _____
_____	Revision 9: _____
_____	Revision 8: _____
_____	Revision 7: _____
_____	Revision 6: _____
_____	Revision 5: _____
_____	Revision 4: _____
_____	Revision 3: _____
_____	Revision 2: _____
_____	Revision 1: _____
Project Name: BALBOA PARK PLAZA Plaza de Panama Circulation and Parking Structure Project	Original Date: 3/11/11
Sheet Title: Lighting and bollards	Sheet 23 of 43
DEP # 233958	

